

PCC SIDEWALK/TRAIL
 STPN-092-2(048)--2J-15

CASS COUNTY

LETTING DATE
 Dec 19, 2023



MILEAGE SUMMARY			105-1
			09-27-94
Div.		Lin. Ft.	Miles
1	Sta. 451+75.26 to Sta. 466+72.25	1,496.99	0.284
	Station Equation 466+72.25 R1 (BK)= 1987+80.52 R2 (AH)		
	Sta. 1987+80.52 to Sta. 2002+43.54	1,463.02	0.277
	Station Equation Sta. 2002+43.54 R2 (BK)= Sta. 0+00.00 R3 (AH)		
	Sta. 0+00.00 to Sta. 9+55.75	955.75	0.181
Total Length of Project		3,915.76	0.742

PLANS OF PROPOSED IMPROVEMENT ON THE
PRIMARY ROAD SYSTEM
CASS COUNTY
PCC SIDEWALK/TRAIL
 In Griswold (ADA - District 4)

SCALES: As Noted

Refer to the Proposal Form for list of applicable specifications.

Value Engineering Saves. Refer to Article 1105.14 of the Specifications.

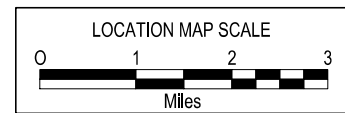
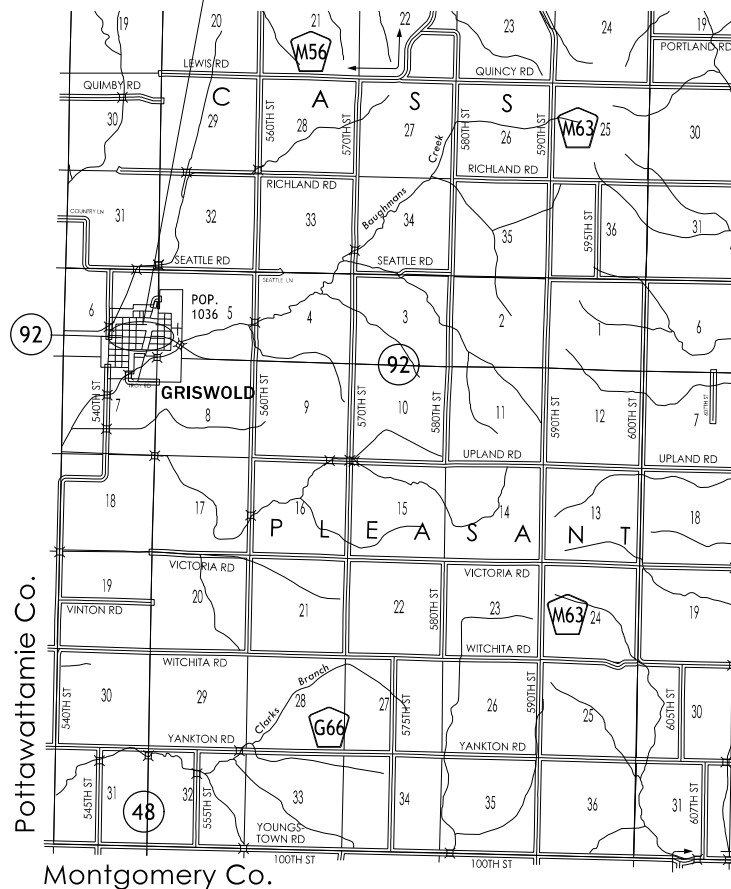


For Project Location Map
 Refer to Sheet No. A.2

PROJECT LOCATION
 (Refer to Sheet A.2 for detail)



T-74N



DESIGN DATA URBAN	
2024 AADT	1860 V.P.D.
2044 AADT	1100 V.P.D.
2024 DHV	110 V.P.H.
TRUCKS	9.6 %
Total Design ESALs	--

INDEX OF SEALS		
SHEET NO.	NAME	TYPE
A.1	Brian T. Higginbotham	Primary Signature Block

PRELIMINARY PLANS

Subject to change by final design.

D5 PLAN - Date: 12/19/2022

REVISIONS

TOTAL
54

PROJECT IDENTIFICATION NUMBER	22-15-048-010
PROJECT NUMBER	STPN-092-2(048)--2J-15
R.O.W. PROJECT NUMBER	STPN-092-2(049)--2J-15

INDEX OF SHEETS	
No.	DESCRIPTION
A Sheets	Title Sheets
A.1	Title Sheet
A.2	Location Map Sheet
B Sheets	Typical Cross Sections and Details
B.1 - 6	Typical Cross Sections and Details
C Sheets	Quantities and General Information
C.1	Project Description
D Sheets	Mainline Plan and Profile Sheets
* D.1	Plan & Profile Legend & Symbol Information Sheet
* D.2 - 8	IA 92
G Sheets	Survey Sheets
G.1	Reference Ties and Bench Marks
G.2	Horizontal Control Tab. & Super for all Alignments
H Sheets	Right-of-Way Sheets
H.1 - 7	IA 92
J Sheets	Traffic Control and Staging Sheets
J.1	Traffic Control Plan and Staging Notes
R Sheets	Erosion Control Sheets
* RR.1	Erosion Control Legend and Symbol Information Sheet
* RR.2 - 8	Drainage Basin and Erosion Control Device Maps
S Sheets	Sidewalk Sheets
* S.1	Sidewalk Legend & Symbol Information Sheet
* S.2 - 16	Sidewalk Plan Sheets
U Sheets	500 Series, Mod.Stds. and Detail Sheets
* U.1 - 3	500 Series, Modified Standards and Detail Sheets
	* Color Plan Sheets

92

BEGIN PROJECT
BEGIN CONSTRUCTION
STA. 451+75.26 R1

STATION EQ
466+72.25 R1 (BK) =
1987+80.52 R2 (AH)

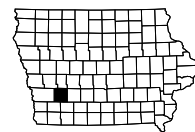
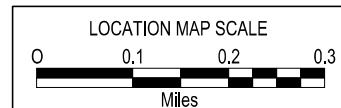
END PROJECT
END CONSTRUCTION
STA. 9+55.75 R3

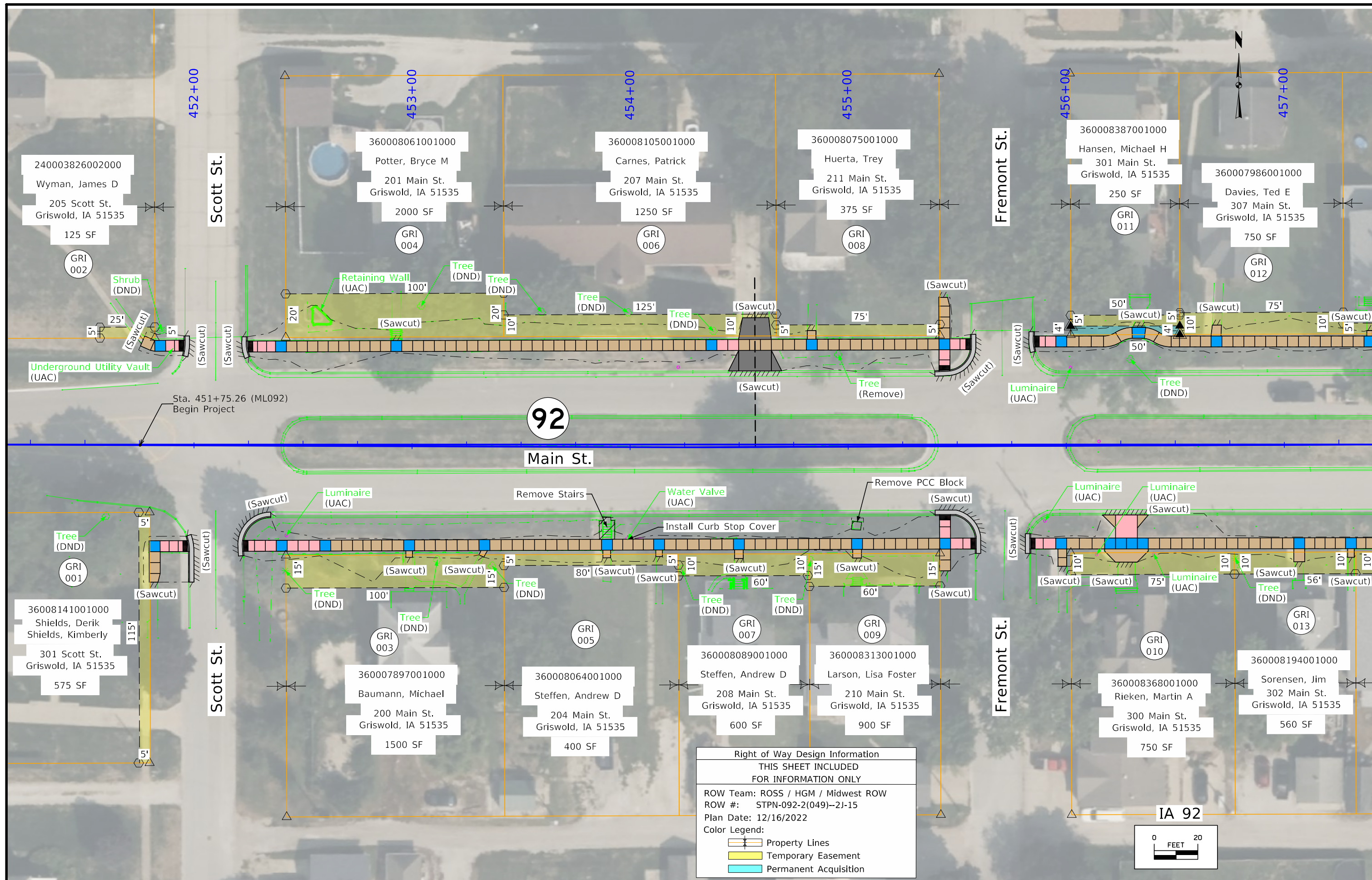
STATION EQ
2002+43.54 R2 (BK) =
0+00.00 R3 (AH)

T-74N

R-37W

48



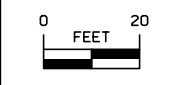


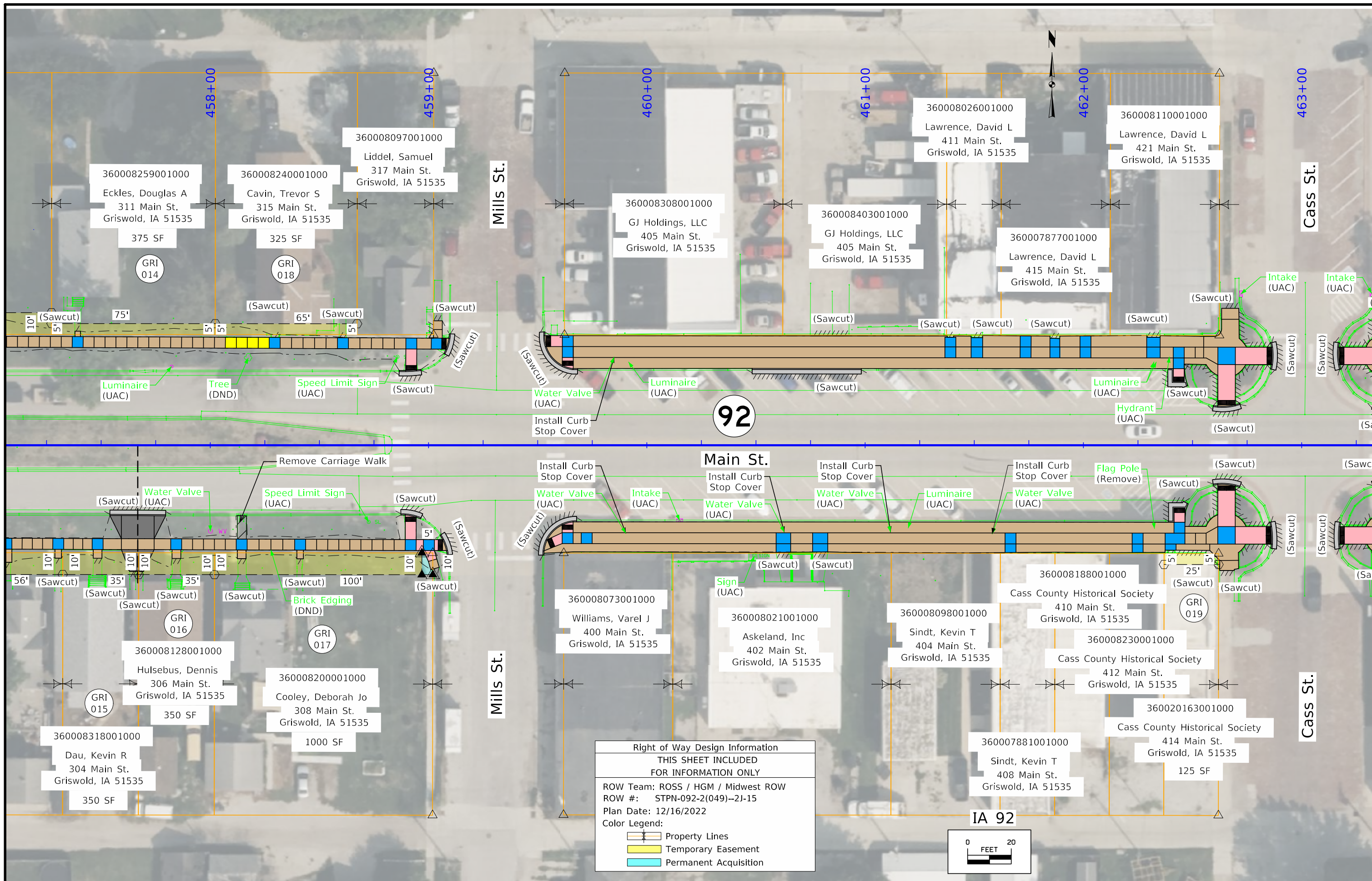
Sta. 451+75.26 (ML092)
Begin Project

92

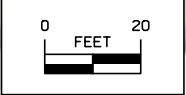
Main St.

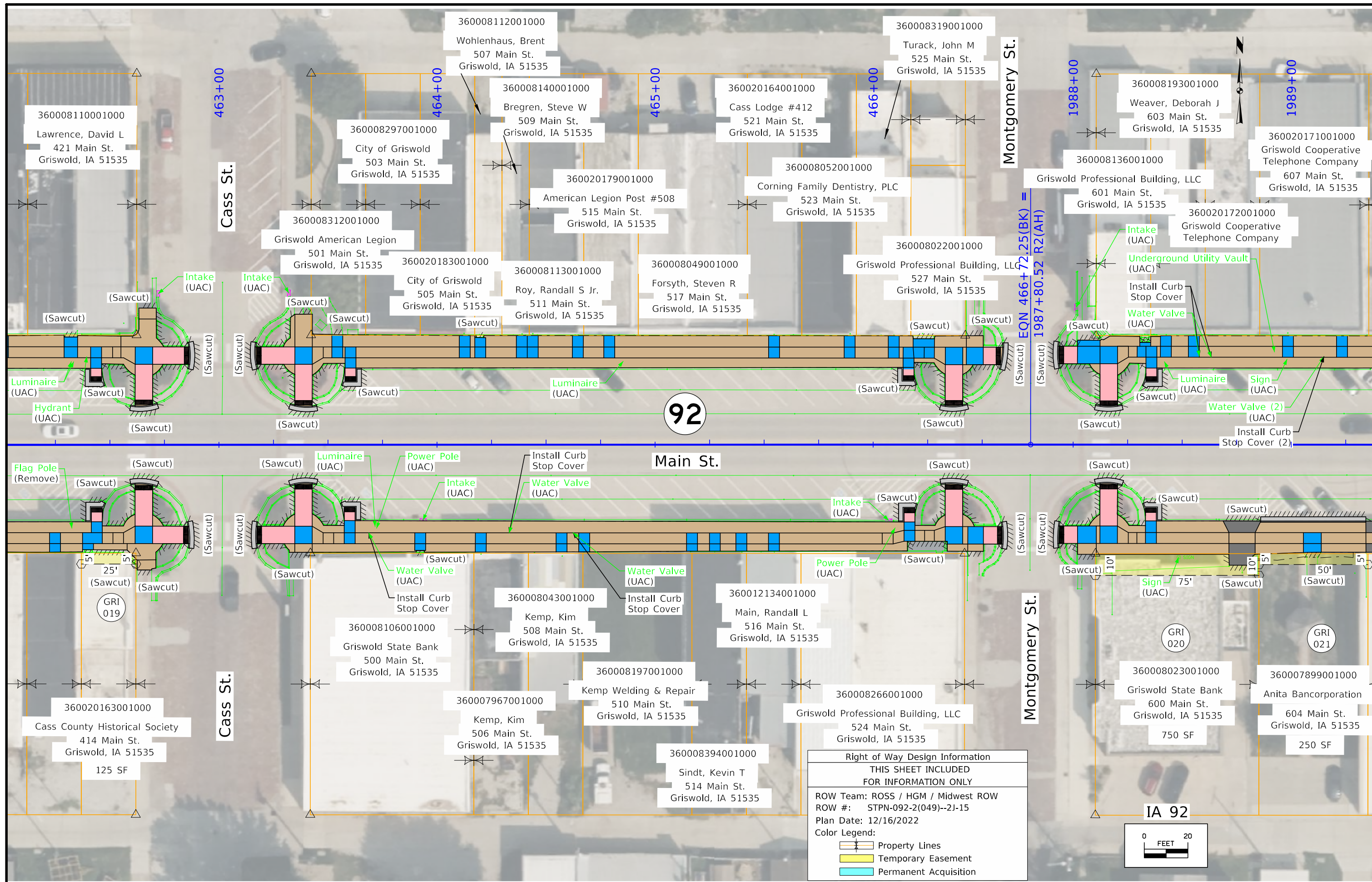
Right of Way Design Information
THIS SHEET INCLUDED
FOR INFORMATION ONLY
ROW Team: ROSS / HGM / Midwest ROW
ROW #: STPN-092-2(049)--2J-15
Plan Date: 12/16/2022
Color Legend:
 - Property Lines
 - Temporary Easement
 - Permanent Acquisition



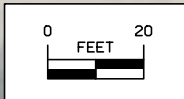


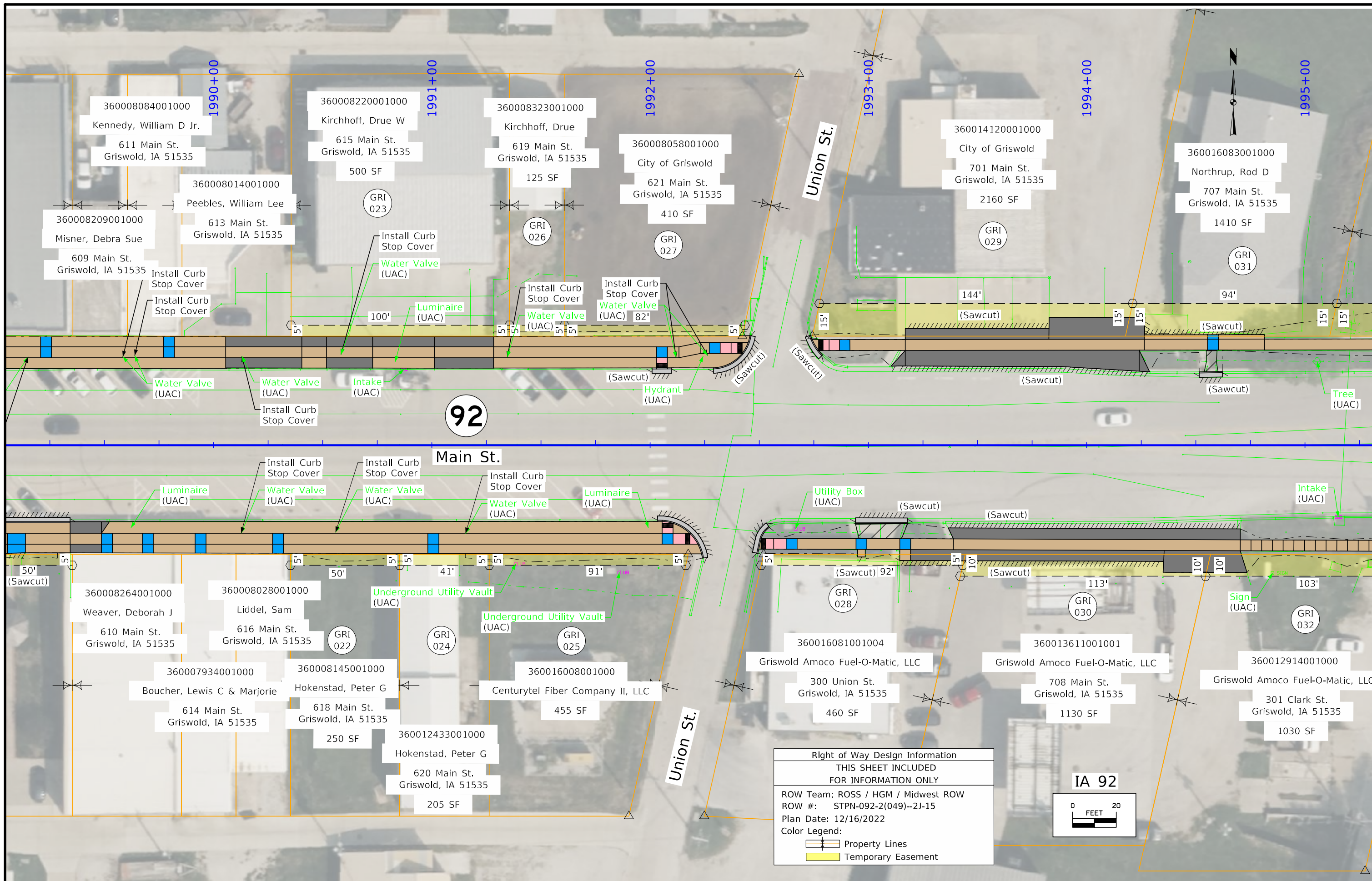
Right of Way Design Information
 THIS SHEET INCLUDED
 FOR INFORMATION ONLY
 ROW Team: ROSS / HGM / Midwest ROW
 ROW #: STPN-092-2(049)--2J-15
 Plan Date: 12/16/2022
 Color Legend:
 [Property Lines] Property Lines
 [Temporary Easement] Temporary Easement
 [Permanent Acquisition] Permanent Acquisition

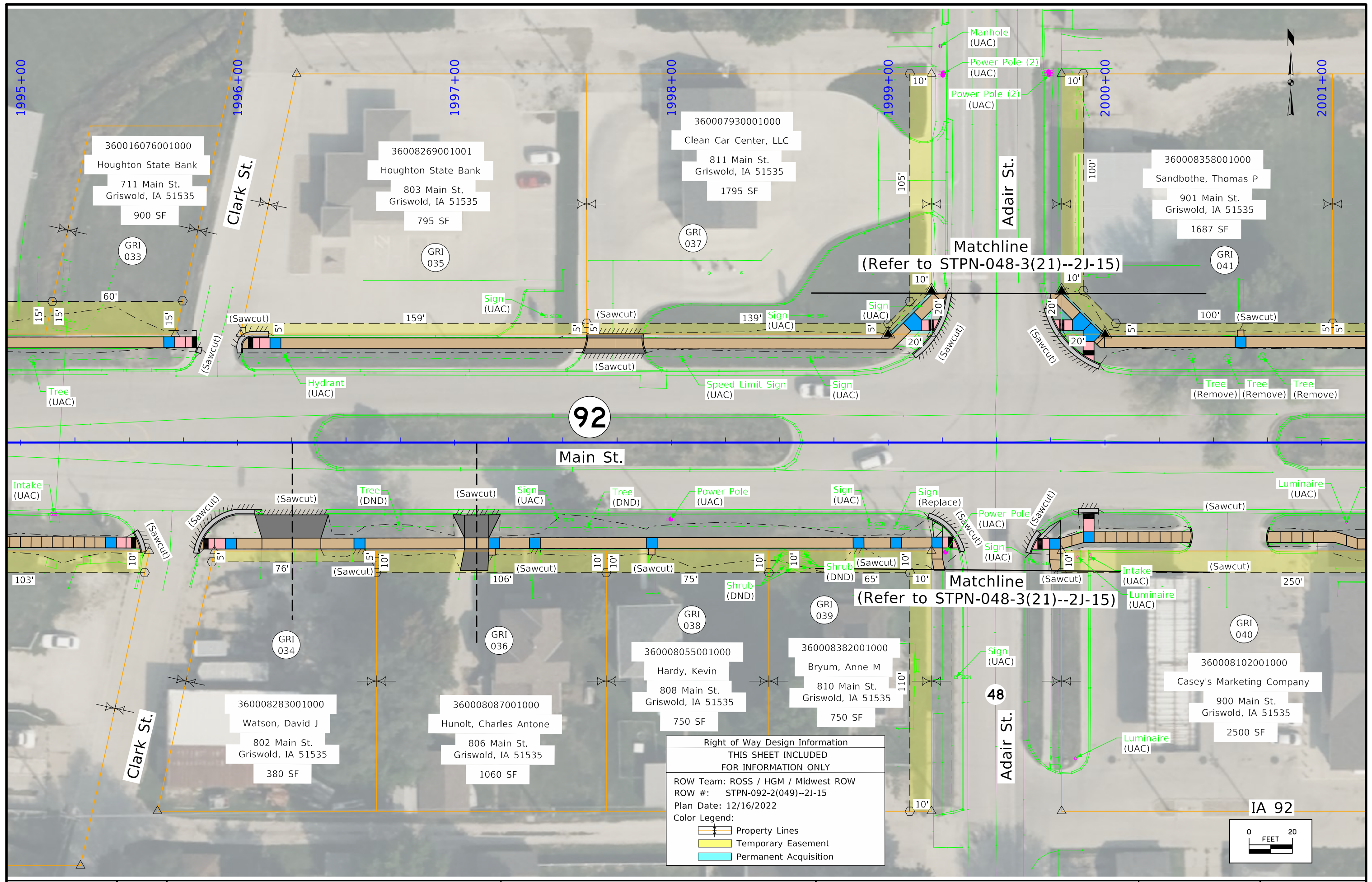




Right of Way Design Information	
THIS SHEET INCLUDED FOR INFORMATION ONLY	
ROW Team: ROSS / HGM / Midwest ROW	
ROW #: STPN-092-2(049)--2J-15	
Plan Date: 12/16/2022	
Color Legend:	
	Property Lines
	Temporary Easement
	Permanent Acquisition



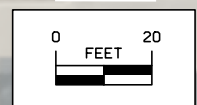


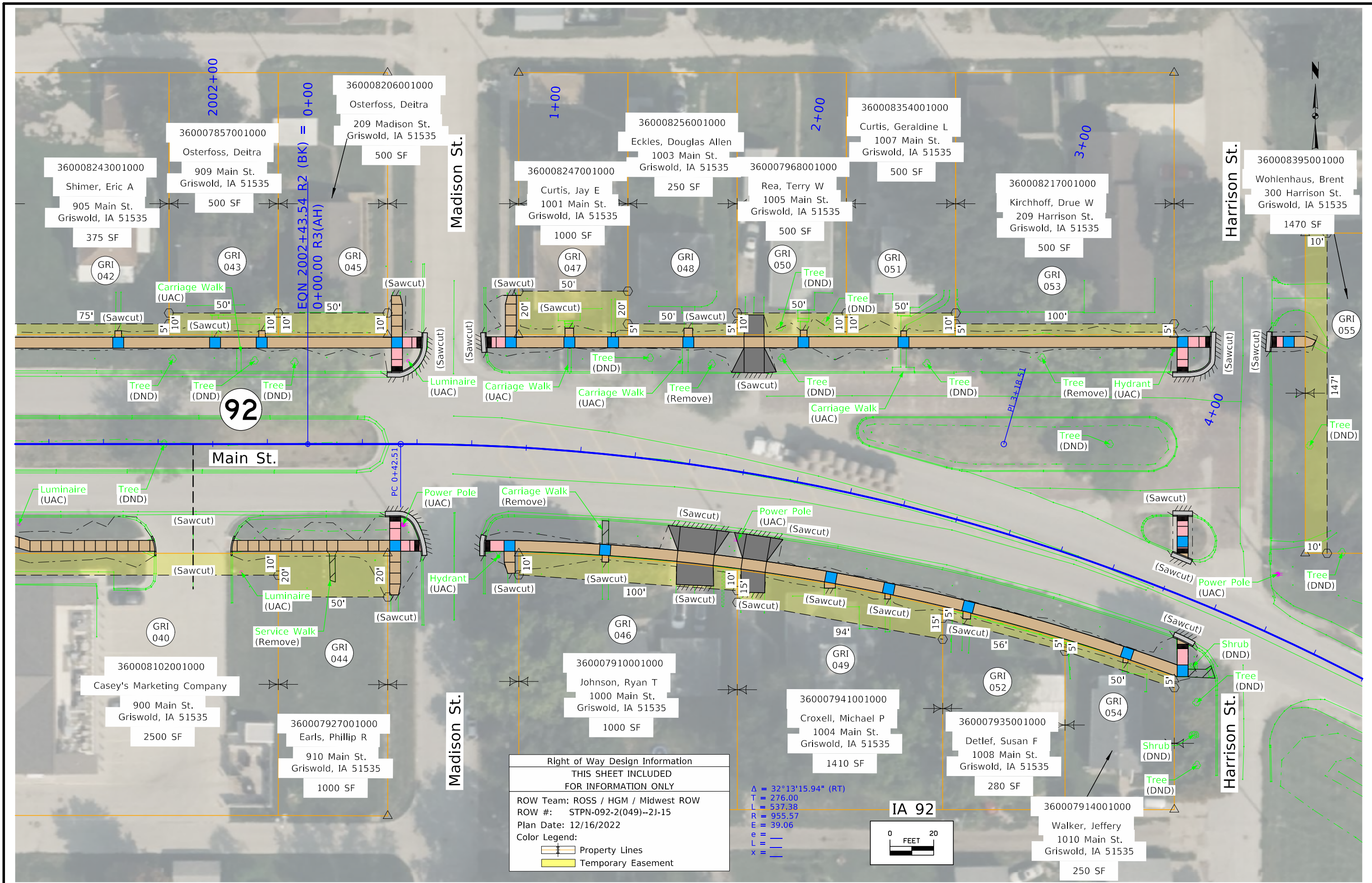


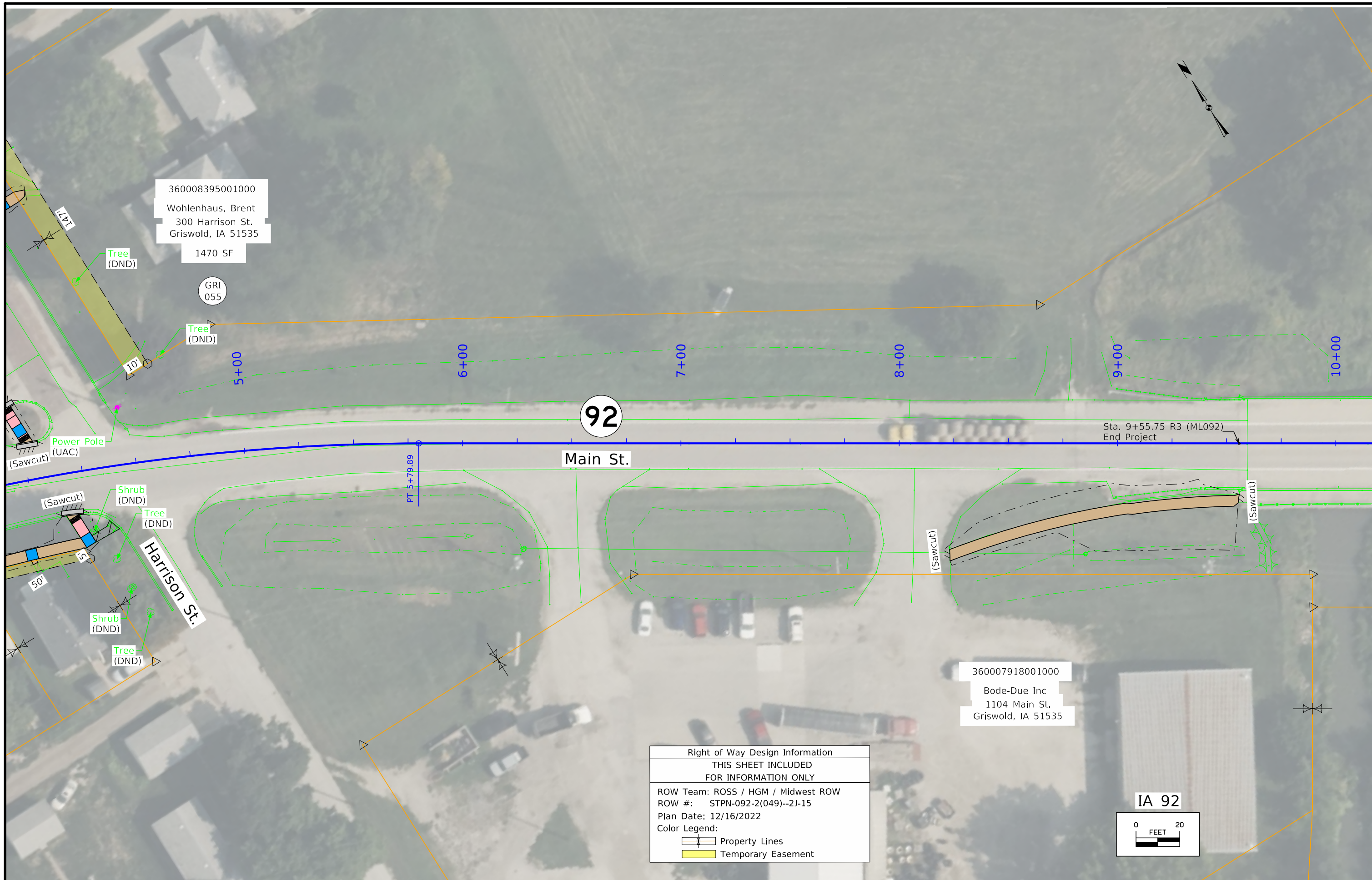
Right of Way Design Information
 THIS SHEET INCLUDED
 FOR INFORMATION ONLY

ROW Team: ROSS / HGM / Midwest ROW
 ROW #: STPN-092-2(049)--2J-15
 Plan Date: 12/16/2022
 Color Legend:

- Property Lines
- Temporary Easement
- Permanent Acquisition







360008395001000
 Wohlenhaus, Brent
 300 Harrison St.
 Griswold, IA 51535

1470 SF

GRI
 055

Tree
 (DND)

5+00

6+00

7+00

8+00

9+00

10+00

92

Main St.

Sta. 9+55.75 R3 (ML092)
 End Project

Harrison St.

360007918001000
 Bode-Due Inc
 1104 Main St.
 Griswold, IA 51535

Right of Way Design Information	
THIS SHEET INCLUDED FOR INFORMATION ONLY	
ROW Team:	ROSS / HGM / Midwest ROW
ROW #:	STPN-092-2(049)--2J-15
Plan Date:	12/16/2022
Color Legend:	
	Property Lines
	Temporary Easement

