

# Muscatine Municipal Airport

The logo for Iowa DOT, featuring the word "IOWA" in blue with a yellow sun icon over the "O", followed by a vertical line and the word "DOT" in blue. The logo is enclosed in a green circular frame.

IOWA | DOT

---

## Pavement Management Report

### PREPARED BY

Applied Pavement Technology, Inc.  
115 West Main Street, Suite 400  
Urbana, Illinois 61801  
(217) 398-3977  
[www.appliedpavement.com](http://www.appliedpavement.com)

**JULY 2024**



The preparation of this document was financed in part through an Airport Improvement Program grant from the Federal Aviation Administration (Project Number 3-19-0000-031-2023) as provided under Section 505 of the Airport and Airway Improvement Act of 1982, as amended. The contents do not necessarily reflect the DOT's official views or the policy of the FAA. Acceptance of this report by the FAA does not in any way constitute a commitment on the part of the United States to participate in any development depicted therein nor does it indicate the proposed development is environmentally acceptable in accordance with appropriate public laws.

# MUSCATINE MUNICIPAL AIRPORT PAVEMENT MANAGEMENT REPORT



## Prepared For:

Iowa Department of Transportation  
Modal Transportation Bureau – Aviation  
800 Lincoln Way  
Ames, Iowa 50010  
515-239-1691  
<https://iowadot.gov/aviation/>



## Prepared By:

Applied Pavement Technology, Inc.  
115 West Main Street, Suite 400  
Urbana, Illinois 61801  
217-398-3977  
<https://www.appliedpavement.com>



## In Association With:

Robinson Engineering Company  
Consulting Engineers  
819 Second Street NE  
Independence, Iowa 50644  
319-334-7211

## TABLE OF CONTENTS

INTRODUCTION.....	1
PAVEMENT INVENTORY.....	3
PAVEMENT EVALUATION.....	6
Pavement Evaluation Procedure.....	6
Pavement Evaluation Results.....	8
Inspection Comments.....	13
Runways.....	13
Taxiway.....	13
Apron.....	13
T-Hangar.....	14
PAVEMENT MAINTENANCE AND REHABILITATION PROGRAM.....	15
Analysis Parameters.....	15
Critical PCIs.....	15
Localized Preventive Maintenance Policies and Unit Costs.....	15
Major Rehabilitation Unit Costs.....	15
Budget and Inflation Rate.....	15
Analysis Approach.....	15
Analysis Results.....	16
General Maintenance Recommendations.....	17
FAA Requirements (Public Law 103-305).....	17
FAA Advisory Circular 150/5830-7B, Appendix A. Pavement Management Program (PMP).....	18
SUMMARY.....	25

## LIST OF FIGURES

Figure 1. Pavement condition versus cost of repair.....	1
Figure 2. Pavement area by branch use at Muscatine Municipal Airport.....	4
Figure 3. Muscatine Municipal Airport network definition map.....	5
Figure 4. Visual representation of PCI scale on typical pavement surfaces.....	6
Figure 5. PCI versus repair type.....	7
Figure 6. Pavement area by PCI range at Muscatine Municipal Airport.....	8
Figure 7. Area-weighted PCI by branch use at Muscatine Municipal Airport.....	9
Figure 8. Muscatine Municipal Airport PCI map.....	10

## LIST OF TABLES

Table 1. 2023 pavement evaluation results.....	11
Table 2. 5-year M&R program under an unlimited funding analysis scenario.....	16
Table 3. Pavement inspection report.....	20



---

## APPENDIXES

Appendix A. Cause of Distress Tables .....	A-1
Appendix B. Inspection Photographs .....	B-1
Appendix C. Inspection Report .....	C-1
Appendix D. Work History Report .....	D-1
Appendix E. Localized Preventive Maintenance Policies and Unit Cost Tables.....	E-1
Appendix F. Year 2024 Localized Preventive Maintenance Details .....	F-1

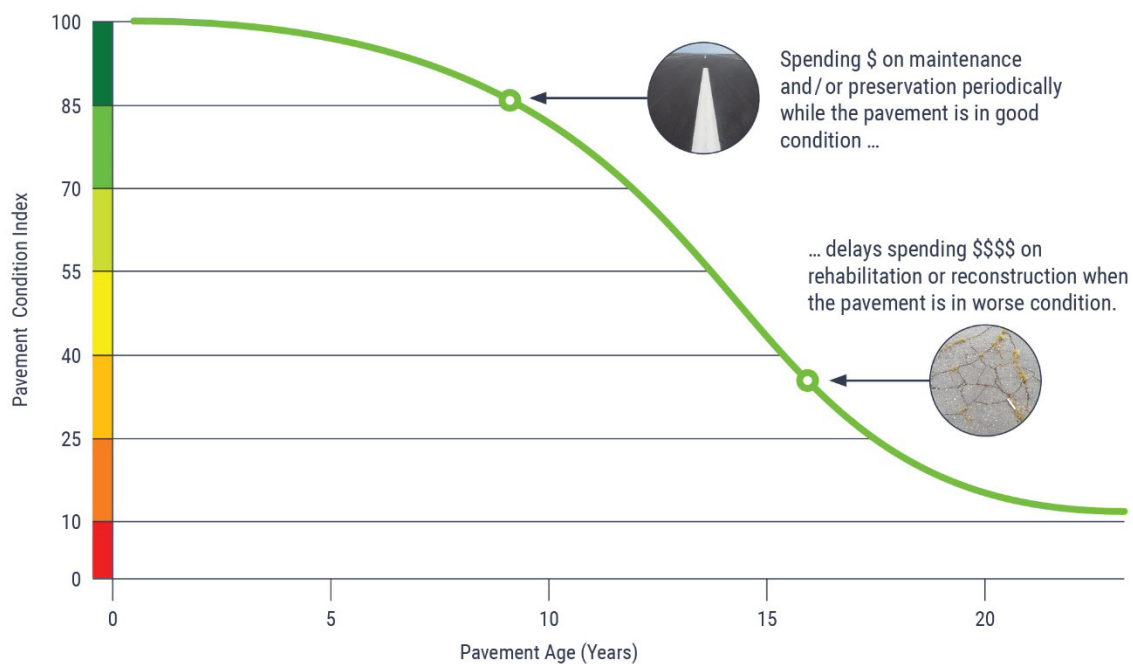
## INTRODUCTION

Applied Pavement Technology, Inc. (APTech), with assistance from Robinson Engineering Company Consulting Engineers (Robinson), updated the Airport Pavement Management System (APMS) for the Iowa Department of Transportation, Modal Transportation Bureau – Aviation (Iowa DOT). The APMS provides a means to monitor the condition of the pavements within the State of Iowa and to proactively plan for their preservation.

As part of this project, pavement conditions at Muscatine Municipal Airport were visually assessed in November 2023 using the Pavement Condition Index (PCI) procedure. During a PCI inspection, the types, severities, and amounts of distress present on the pavement surface are quantified. This information is then used to develop a composite index that represents the overall condition of the pavement in numerical terms, ranging from 0 (failed) to 100 (excellent). The PCI provides an overall measure of condition and an indication of the level of work that will be required to maintain or repair a pavement. The distress information also provides insight into what is causing the pavement to deteriorate, which is the first step in selecting the appropriate repair action to correct the problem.

Programmed into an APMS, PCI information is used to determine when preventive maintenance actions (such as crack or joint sealing) are advisable and to identify the most cost-effective time to perform major rehabilitation (such as an overlay or whitetopping). Delaying maintenance and rehabilitation (M&R) until a pavement structure has seriously degraded can cost many times more than if M&R was applied earlier in a pavement's life cycle, as shown in Figure 1. From a safety perspective, pavement distresses, such as cracks and loose debris, may pose risks in terms of the potential for aircraft tire damage and the ability of a pilot to safely control aircraft.

Figure 1. Pavement condition versus cost of repair.



The pavement evaluation results for Muscatine Municipal Airport are presented within this report and can be used by Muscatine Municipal Airport, the Iowa DOT, and the Federal Aviation Administration (FAA) to identify, prioritize, and schedule pavement M&R actions at the airport. In addition to this report, the web-based interactive pavement data visualization tool IDEA, containing the information collected during this project, was updated and may be accessed from the [Iowa DOT's website](#) or directly ([Iowa APMS IDEA](#)).

## PAVEMENT INVENTORY

The project began with a review of the existing inventory information pertaining to the pavements at Muscatine Municipal Airport. The date of original construction, along with the date of any subsequent rehabilitation; the location of completed work; and the type of work undertaken were gathered. The information was used to update the pavement management database and associated maps, as necessary, to account for pavement-related work that had been undertaken since the last time the airport was evaluated in 2020.

The pavement network at Muscatine Municipal Airport was then divided into branches, sections, and sample units. A branch is a single entity that serves a distinct function. For example, a runway is considered a branch because it serves a single function (allowing aircraft to take off and land). Taxiways, aprons, and T-hangars are also separate branches.

Each branch was further divided into sections. Traditionally, sections are defined as parts of the branch that share common attributes, such as cross-section, date of last construction, traffic level, and performance. Using this approach, if a runway was built in 1968 and then extended in 1984, it would contain two separate sections.

To estimate the overall condition of a pavement section, each section was subdivided into sample units. Portions of these sample units were evaluated during the pavement inspection, and the collected information was extrapolated to predict the overall section condition and quantities of distress.

Approximately 1,616,200 square feet of pavement were evaluated at Muscatine Municipal Airport, as illustrated in Figure 2. This figure also shows the area-weighted age in years of the pavements at the time of the inspection. Figure 3 provides a map that details how the pavement network was divided into management units and identifies the sample units that were evaluated during the pavement inspection at Muscatine Municipal Airport.

Figure 2. Pavement area by branch use at Muscatine Municipal Airport.

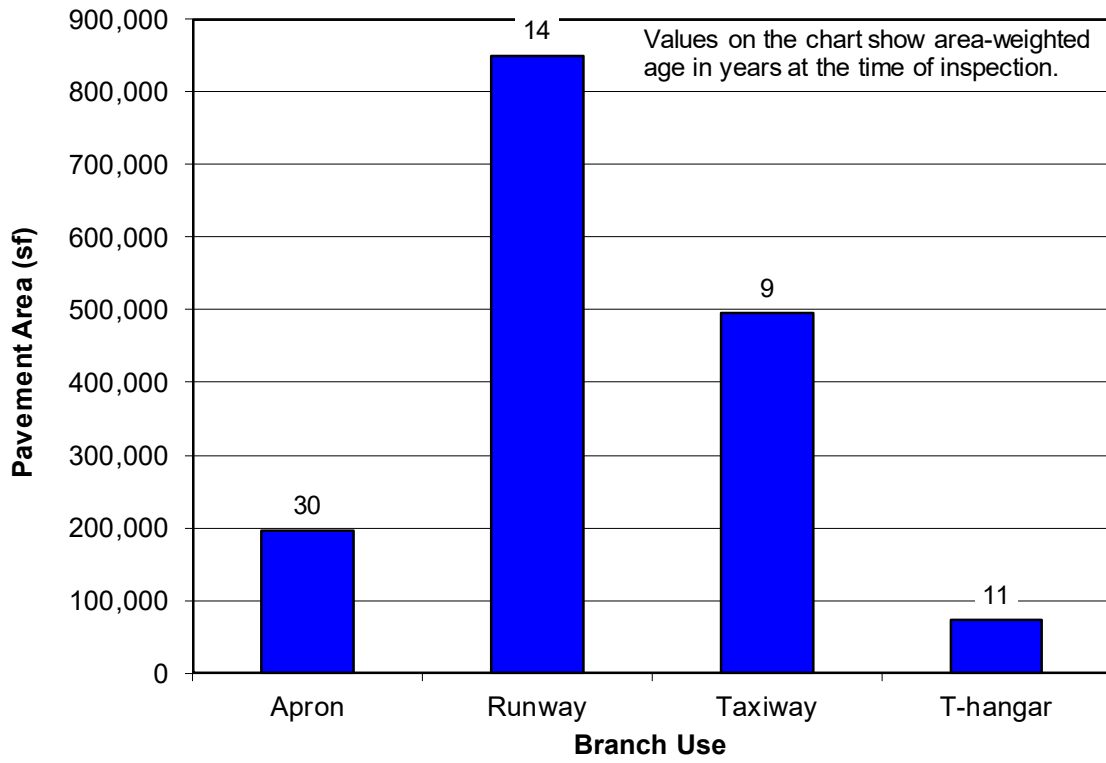
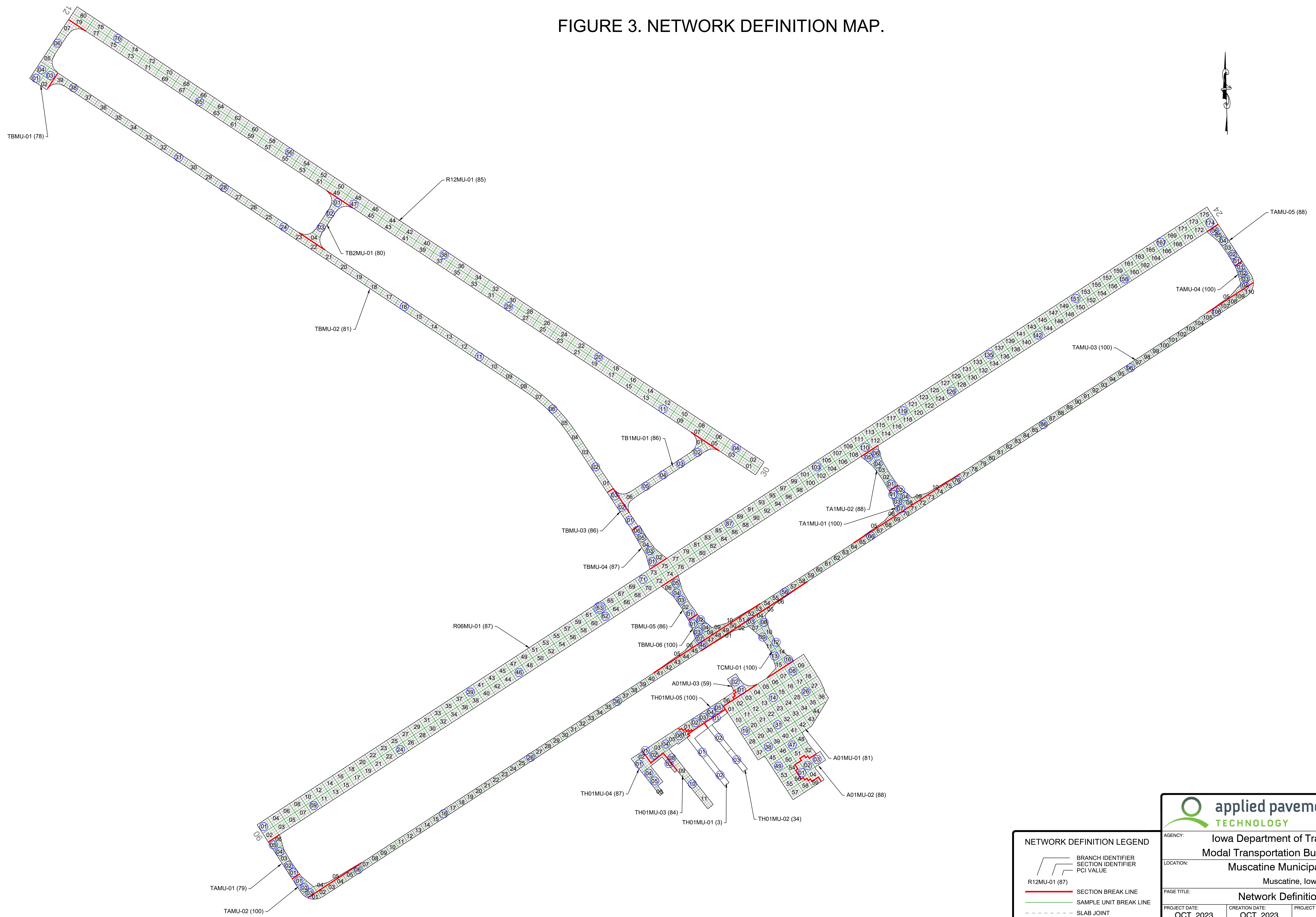




FIGURE 3. NETWORK DEFINITION MAP.



**NETWORK DEFINITION LEGEND**

	BRANCH IDENTIFIER
	SECTION IDENTIFIER
	PCI VALUE
	SECTION BREAK LINE
	SAMPLE UNIT BREAK LINE
	SLAB JOINT
	SAMPLE UNIT NUMBER
	SAMPLE UNIT INSPECTED
	ADDITIONAL SAMPLE UNIT

**applied pavement TECHNOLOGY**  
 115 W. Main Street, Suite 400  
 Urbana, IL 61801  
 Tel: (217) 398-3977  
 Fax: (217) 398-4027

AGENCY: Iowa Department of Transportation  
 Modal Transportation Bureau - Aviation

LOCATION: Muscatine Municipal Airport  
 Muscatine, Iowa

PAGE TITLE: Network Definition Map

PROJECT DATE: OCT. 2023	CREATION DATE: OCT. 2023	PROJECT MANAGER: LJR	JOB NUMBER: 2021-125-AM02
DRAWING SCALE: 1"=200'	LAST MODIFIED DATE: FEB. 2024	REVISED BY: DMS	DRAWN BY: TMM
FILENAME: Muscatine.dwg	LAYOUT NAME/NUMBER: NET. DEF.	PAGE NUMBER: 5	



## PAVEMENT EVALUATION

### Pavement Evaluation Procedure

APTech visually inspected the pavements at Muscatine Municipal Airport using the PCI procedure described in:

- FAA Advisory Circular 150/5380-6C, [Guidelines and Procedures for Maintenance of Airport Pavements](#).
- FAA Advisory Circular 150/5380-7B, [Airport Pavement Management Program \(PMP\)](#).
- ASTM D5340-20, *Standard Test Method for Airport Pavement Condition Index Surveys*.

During the PCI inspection, a cursory inspection of the entirety of a pavement section was performed. Sample units identified for more detailed inspection were verified, and adjustments to the selected sample units for inspection were made as needed to ensure an accurate assessment of the pavement's condition. Data pertaining to the types, severities, and quantities of observed pavement distresses were then collected within each sample unit. These data were then used to calculate the composite PCI of each pavement section. The PCI provides a numerical indication of overall pavement condition, as illustrated in Figure 4. The PCI ranges from a value of 0, which represents a pavement in a failed condition, to a value of 100, which represents a pavement in excellent condition with no visible signs of deterioration. It is important to note that factors other than overall PCI need to be considered when identifying the appropriate type of repair, including types of distress present and rate of deterioration. Also, since the PCI does not assess the structural integrity or capacity of the pavement structure, further testing may be needed to validate and refine the treatment strategy.

Figure 4. Visual representation of PCI scale on typical pavement surfaces.



Note: Photographs shown are not specific to Muscatine Municipal Airport.

Generally, pavements with relatively high PCIs that are not exhibiting significant load-related distress will benefit from preventive maintenance actions, such as crack sealing or joint resealing. As the PCI drops, the pavements may require major rehabilitation, such as an overlay or whitetopping. In some situations where the PCI has dropped low enough, reconstruction may be the only viable alternative due to the substantial damage to the pavement structure. Figure 5 illustrates how the appropriate repair type varies with the PCI of a pavement section and provides the corresponding colors used for the maps and charts in this report for each range of PCIs.

Figure 5. PCI versus repair type.

PCI Range	Repair
86-100	Preventive Maintenance
71-85	
56-70	Major Rehabilitation
41-55	
26-40	Reconstruction
11-25	
0-10	

The types of distress identified during the PCI inspection provide insight into the cause of pavement deterioration, which is useful when selecting M&R strategies. Understanding the cause of distress helps in selecting a rehabilitation alternative that corrects the cause and thus eliminates or delays its recurrence. PCI distress types are characterized as:

- Load-related—These distress types are defined as being caused by aircraft or vehicular traffic and may indicate a structural deficiency. Examples of load-related distress include alligator cracking on asphalt-surfaced pavements and corner breaks on portland cement concrete (PCC) pavements.
- Climate/durability-related—These distress types often signify the presence of aged or environmentally susceptible (or both) material and include durability-related issues. Examples of climate/durability-related distress include weathering on asphalt-surfaced pavements, which is climate-related, and durability cracking on PCC pavements, which is durability-related.
- Other—Distress types that fall into this category cannot be attributed solely to load or climate/durability. Examples of this type of distress include depressions on asphalt-surfaced pavements and shrinkage cracking on PCC pavements.

Appendix A identifies the distress types considered during a PCI inspection and describes the likely cause of each distress type. It should be noted that a PCI is based on visual signs of pavement deterioration and does not provide a measure of structural capacity.

### Pavement Evaluation Results

The pavements at Muscatine Municipal Airport were inspected in November 2023. The 2023 area-weighted condition of Muscatine Municipal Airport is 86, with conditions ranging from 3 to 100 (on a scale of 0 [failed] to 100 [excellent]). During the previous pavement inspection in 2020, the area-weighted PCI of the airport was 83.

Figure 6 summarizes the overall condition of the pavements at Muscatine Municipal Airport, and Figure 7 presents area-weighted condition (average PCI adjusted to account for the relative size of the pavement sections) by branch use. Figure 8 is a map that displays the condition of the evaluated pavements. Table 1 summarizes the results of the pavement evaluation. Appendix B presents photographs taken during the PCI inspection, and Appendix C contains detailed information on the distress types observed during the visual survey. Appendix D includes detailed work history information that was collected during the record review process.

Figure 6. Pavement area by PCI range at Muscatine Municipal Airport.

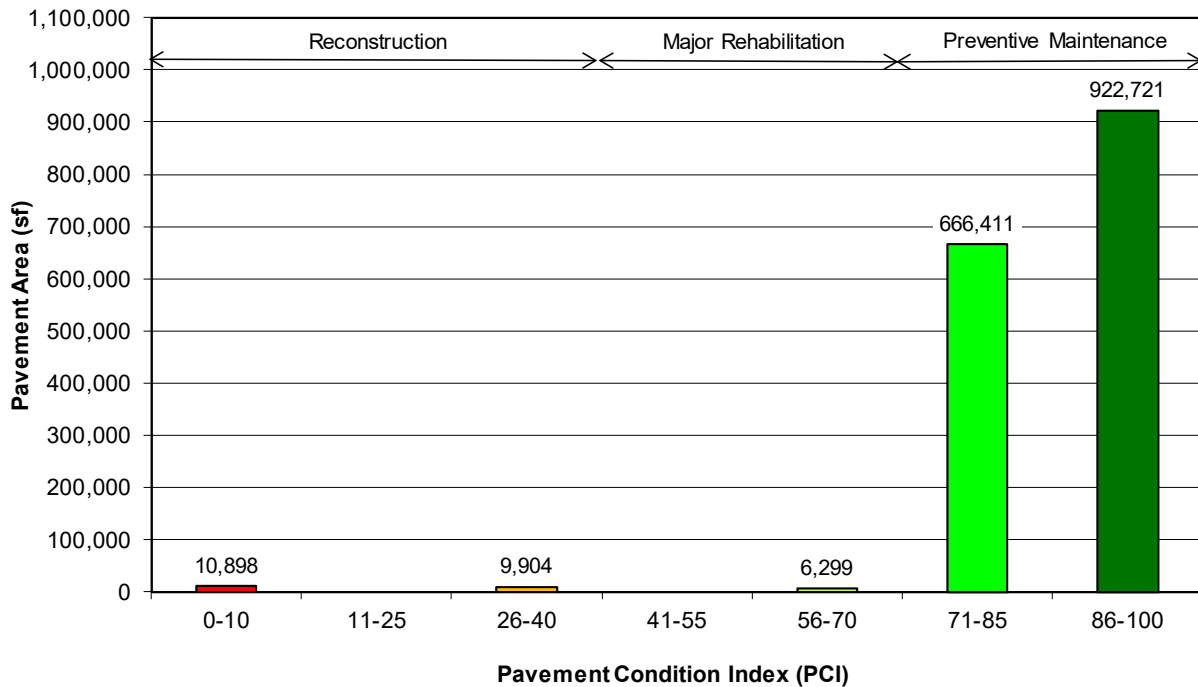


Figure 7. Area-weighted PCI by branch use at Muscatine Municipal Airport.  
(Values on chart are area-weighted)

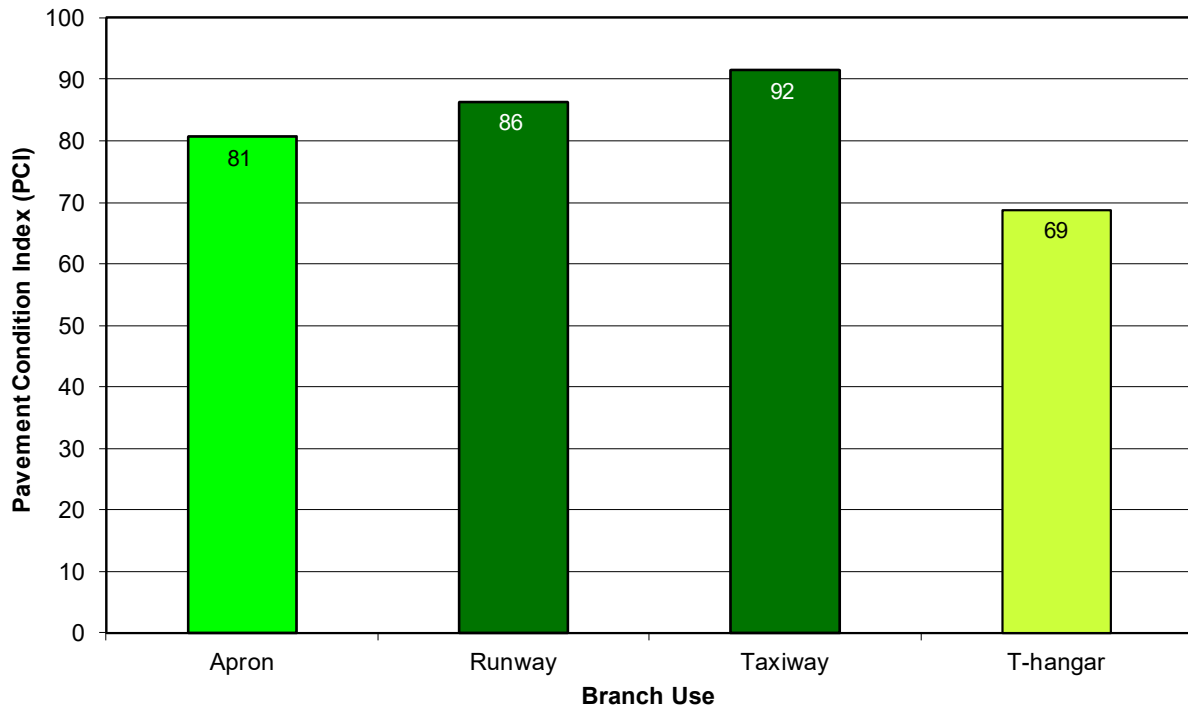
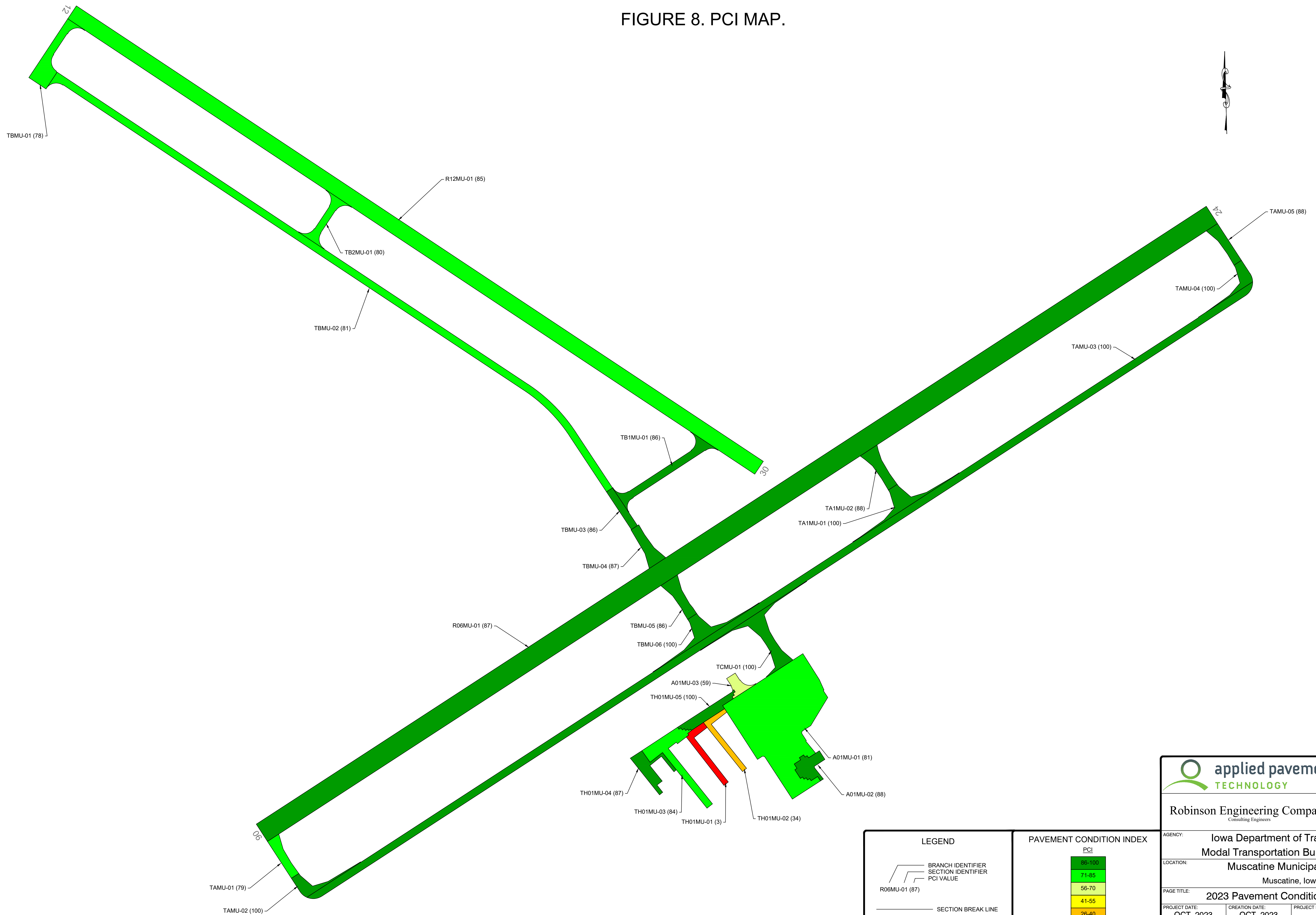




FIGURE 8. PCI MAP.



LEGEND	
	BRANCH IDENTIFIER SECTION IDENTIFIER PCI VALUE
	SECTION BREAK LINE

PAVEMENT CONDITION INDEX	
PCI	
	86-100
	71-85
	56-70
	41-55
	26-40
	11-25
	0-10

		115 W. Main Street, Suite 400 Urbana, IL 61801 Tel: (217) 998-3977 Fax: (217) 998-4027	
Robinson Engineering Company Consulting Engineers		819 Second Street NE Independence, Iowa 50644 319-334-7211	
AGENCY: Iowa Department of Transportation Modal Transportation Bureau - Aviation			
LOCATION: Muscatine Municipal Airport Muscatine, Iowa			
PAGE TITLE: 2023 Pavement Condition Index Map			
PROJECT DATE: OCT. 2023	CREATION DATE: OCT. 2023	PROJECT MANAGER: LJR	JOB NUMBER: 2021-125-AM02
DRAWING SCALE: 1"=200'	LAST MODIFIED DATE: MAR. 2024	REVISED BY: DMS	DRAWN BY: BEH
FILENAME: Muscatine.dwg		LAYOUT NAME/NUMBER: PCI	PAGE NUMBER: 10

Table 1. 2023 pavement evaluation results.

Branch	Section	Surface Type	Section Area (sf)	LCD	2023 PCI	% Distress Due to Load	% Distress Due to Climate/Durability	% Distress Due to Other	Type of Distress
A01MU	01	PCC	177,979	9/2/1991	81	19	49	32	ASR, Joint Spalling, Joint Seal Damage, LTD Cracking, Popouts, Scaling, Shrinkage Cracking, Small Patch
A01MU	02	PCC	12,444	4/1/2016	88	0	100	0	Joint Seal Damage
A01MU	03	PCC	6,299	7/1/1991	59	19	19	62	ASR, Faulting, Joint Spalling, Joint Seal Damage, LTD Cracking, Small Patch
R06MU	01	PCC	549,989	6/2/2015	87	0	78	22	Corner Spalling, Faulting, Joint Spalling, Joint Seal Damage, Large Patch
R12MU	01	PCC	300,000	10/30/1999	85	0	68	32	Corner Spalling, Faulting, Joint Spalling, Joint Seal Damage, Small Patch
TA1MU	01	PCC	13,758	7/3/2021	100	0	0	0	No Distress
TA1MU	02	PCC	12,153	6/2/2015	88	0	97	3	Joint Spalling, Joint Seal Damage
TAMU	01	PCC	9,803	6/2/2015	79	0	58	42	Faulting, Joint Spalling, Joint Seal Damage, Scaling
TAMU	02	PCC	8,903	7/3/2021	100	0	0	0	No Distress
TAMU	03	PCC	191,022	7/3/2021	100	0	0	0	No Distress
TAMU	04	PCC	8,168	7/3/2021	100	0	0	0	No Distress
TAMU	05	PCC	9,798	6/2/2015	88	0	100	0	Joint Seal Damage
TB1MU	01	PCC	21,343	10/30/1999	86	0	82	18	Corner Spalling, Faulting, Joint Spalling, Joint Seal Damage, Large Patch
TB2MU	01	PCC	12,059	7/2/2007	80	28	57	15	Corner Break, Corner Spalling, Faulting, Joint Spalling, Joint Seal Damage, LTD Cracking, Scaling, Small Patch
TBMU	01	PCC	20,781	6/1/2000	78	0	50	50	ASR, Faulting, Joint Seal Damage, Small Patch
TBMU	02	PCC	119,611	7/2/2007	81	52	45	3	Joint Spalling, Joint Seal Damage, LTD Cracking
TBMU	03	PCC	7,683	10/30/1999	86	0	87	13	Faulting, Joint Seal Damage
TBMU	04	PCC	11,638	6/2/2015	87	0	91	9	Faulting, Joint Seal Damage

Table 1. 2023 pavement evaluation results (continued).

Branch	Section	Surface Type	Section Area (sf)	LCD	2023 PCI	% Distress Due to Load	% Distress Due to Climate/Durability	% Distress Due to Other	Type of Distress
TBMU	05	PCC	12,046	6/2/2015	86	0	80	20	Faulting, Joint Seal Damage
TBMU	06	PCC	14,056	7/3/2021	100	0	0	0	No Distress
TCMU	01	PCC	23,112	7/3/2021	100	0	0	100	Joint Spalling
TH01MU	01	AC	10,898	1/1/1991	3	45	55	0	Alligator Cracking, Block Cracking, Raveling, Rutting
TH01MU	02	AAC	9,904	1/1/2000	34	51	49	0	Alligator Cracking, L&T Cracking, Rutting, Weathering
TH01MU	03	PCC	26,178	6/3/2017	84	31	62	7	Joint Spalling, Joint Seal Damage, LTD Cracking
TH01MU	04	PCC	13,604	6/3/2019	87	9	51	40	Corner Spalling, Faulting, Joint Spalling, Joint Seal Damage, LTD Cracking, Shrinkage Cracking
TH01MU	05	PCC	13,004	7/3/2022	100	0	0	0	No Distress

## Table Notes:

1. See Figure 3 for the location of the branch and section.
2. Surface Type: AC = asphalt cement concrete; AAC = asphalt overlay on AC; PCC = portland cement concrete; APC = asphalt overlay on PCC.
3. LCD = last construction date.
4. Distress due to load includes distress types that are attributed to a structural deficiency in the pavement, such as alligator cracking or rutting on asphalt-surfaced pavements or shattered slabs on PCC pavements.
5. Distress due to climate or durability includes distress types that are attributed to either the aging of the pavement and the effects of the environment (such as weathering, raveling, or block cracking on asphalt-surfaced pavements) or to a materials-related problem (such as durability cracking or alkali-silica reaction [ASR] on PCC pavements). If materials-related distresses were recorded during the inspection, further laboratory testing is required to definitively determine the type present.
6. Distress due to other refers to distress types that are not attributed to one factor but rather may be caused by a combination of factors.
7. Distress types are defined by ASTM D5340-20. L&T Cracking = Longitudinal and Transverse Cracking; LTD Cracking = Longitudinal, Transverse, and Diagonal Cracking; ASR = Alkali-Silica Reaction.

## Inspection Comments

Muscatine Municipal Airport was inspected on November 8, 2023. There were twenty-six pavement sections defined during the inspection. Suspected alkali-silica reaction (ASR) was recorded at this airport in accordance with ASTM D5340. It should be noted that laboratory testing in the form of petrographic analysis is the only definitive way to validate the presence of ASR; however, the formation of a precipitate is evidence of a reaction consistent with this type of materials-related distress.

### *Runways*

Runway 06/24 was defined by one section. Low-severity faulting and joint spalling, medium-severity corner spalling, and high-severity joint seal damage were recorded in Section 01. An atypical area of low-severity large patching was observed and recorded as an additional sample unit in accordance with ASTM D5340.

Runway 12/30 contained one section. Areas of low-severity faulting and joint spalling, low- and medium-severity small patching, medium-severity corner spalling, and high-severity joint seal damage were identified in Section 01 during the inspection.

### *Taxiway*

Taxiway A consisted of five sections. Low-severity faulting, low- and medium-severity joint spalling, medium-severity scaling, and all severities of joint seal damage were recorded in Section 01. Sections 02, 03, and 04 were in excellent condition with no distress observed at the time of the inspection. High-severity joint seal damage was identified throughout Section 05.

Taxiway A1 was defined by two sections. Section 01 was in excellent condition with no distress noted at the time of the inspection. Section 02 was recorded with low-severity joint spalling and high-severity joint seal damage.

Taxiway B contained six sections. Section 01 had areas of low-severity ASR, faulting, and small patching and medium- and high-severity joint seal damage. Areas of low- and medium-severity longitudinal, transverse, and diagonal (LTD) cracking; medium-severity joint spalling; and high-severity joint seal damage were recorded in Section 02. Sections 03, 04, and 05 were in similar condition with low-severity faulting and high-severity joint seal damage observed in all three sections. Section 06 was in excellent condition with no distress recorded during the inspection.

Taxiway B1 was defined by one section. High-severity joint seal damage was identified throughout Section 01, along with areas of low-severity corner spalling, faulting, joint spalling, and large patching.

Taxiway B2 contained one section. Low-severity faulting, scaling, and small patching; medium-severity corner break, corner spalling, joint spalling, and LTD cracking; and medium- and high-severity joint seal damage were observed in Section 01.

Taxiway C was defined by one section. Section 01 was in excellent condition with only an isolated amount of low-severity joint spalling noted.

### *Apron*

Apron 01 consisted of three sections. Section 01 contained areas of low-severity ASR, scaling, and small patching; low- and medium-severity joint spalling; medium-severity LTD cracking; high-severity joint seal damage; popouts; and shrinkage cracking. High-severity joint seal damage was identified throughout Section 02. Areas of low-severity faulting, low- and medium-

severity ASR and small patching, medium-severity joint spalling and LTD cracking, and high-severity joint seal damage were recorded in Section 03.

### *T-Hangar*

The T-hangar area was defined by five sections. Section 01 was in poor condition with areas of low-severity rutting, medium-severity alligator cracking and block cracking, and high-severity raveling. Section 02 was also in poor condition. Areas of low-severity rutting, low- and medium-severity longitudinal and transverse (L&T) cracking, and medium-severity alligator cracking and weathering were recorded in the section. The low-severity L&T cracking was unsealed while the medium-severity L&T cracking was due to unsealed crack widths that exceeded 1/4 inch. Section 03 contained areas of medium-severity LTD cracking and joint spalling and high-severity joint seal damage. Low-severity corner spalling, faulting, and LTD cracking; low- and medium-severity joint spalling; medium-severity joint seal damage; and shrinkage cracking were identified in Section 04. Section 05 was in excellent condition with no distress recorded at the time of the inspection.



## PAVEMENT MAINTENANCE AND REHABILITATION PROGRAM

Using the information collected during the pavement inspection, the PAVER pavement management software was used to develop a 5-year M&R program for Muscatine Municipal Airport. In addition, a 1-year plan for localized preventive maintenance (such as crack sealing and patching) was prepared.

### Analysis Parameters

#### *Critical PCIs*

PAVER uses critical PCIs to determine whether localized preventive maintenance or major rehabilitation is the appropriate repair action. Above the critical PCI, localized preventive maintenance activities are recommended. Below the critical PCI, major rehabilitation actions, such as an overlay or reconstruction, are recommended. The Iowa DOT set the critical PCIs at 65 for runways, 60 for taxiways, and 55 for aprons and T-hangars.

#### *Localized Preventive Maintenance Policies and Unit Costs*

Localized preventive maintenance policies were developed for asphalt-surfaced and PCC pavements. These policies, shown in Appendix E, identify the localized preventive maintenance actions that the Iowa DOT considered appropriate to correct the different distress types and severities. The Iowa DOT provided unit costs for each of the localized preventive maintenance actions included in these policies, and these costs are detailed in Appendix E. Please note that this information is of a general nature for the entire State. The localized preventive maintenance policies and unit costs may require adjustment to reflect specific conditions at Muscatine Municipal Airport.

#### *Major Rehabilitation Unit Costs*

PAVER estimates the cost of major rehabilitation based on the predicted PCI of the pavement section. The Iowa DOT provided the costs for major rehabilitation, and they are presented in Appendix E. If major rehabilitation is recommended in the 5-year program, further engineering investigation will be needed to identify the most appropriate rehabilitation action and to estimate the cost of such work more accurately.

#### *Budget and Inflation Rate*

An unlimited budget with a start date of July 1, 2024, and an inflation rate of 2.0 percent was used during the analysis.

### Analysis Approach

The 5-year M&R program was prepared with the goal of maintaining the pavements above established critical PCIs. During this analysis, major rehabilitation was recommended for pavements in the year they dropped below their critical PCI. For the first year (2024) of the analysis only, a localized preventive maintenance plan was developed for those pavement sections that were above their critical PCI. If major rehabilitation was triggered for a section in 2025 or 2026, then localized preventive maintenance was not recommended for 2024. While localized preventive maintenance should be an annual undertaking at Muscatine Municipal Airport, it is not possible to accurately predict the propagation of cracking and other distress types. Therefore, the airport should budget for maintenance every year and can use the 2024 localized preventive maintenance plan as a baseline for that work. As the pavements age, it can be assumed that the amount of localized preventive maintenance required will increase.

### Analysis Results

A summary of the M&R program for Muscatine Municipal Airport is presented in Table 2. Detailed information on the recommended localized preventive maintenance plan for 2024 is provided in Appendix F.

Table 2. 5-year M&R program under an unlimited funding analysis scenario.

Year	Branch	Section	Surface Type	Type of Repair	Estimated Cost
2024	A01MU	01	PCC	Preventive Maintenance	\$92,145
2024	A01MU	02	PCC	Preventive Maintenance	\$5,787
2024	A01MU	03	PCC	Preventive Maintenance	\$11,818
2024	R06MU	01	PCC	Preventive Maintenance	\$265,759
2024	R12MU	01	PCC	Preventive Maintenance	\$141,938
2024	TA1MU	02	PCC	Preventive Maintenance	\$7,371
2024	TAMU	01	PCC	Preventive Maintenance	\$6,713
2024	TAMU	05	PCC	Preventive Maintenance	\$5,785
2024	TB1MU	01	PCC	Preventive Maintenance	\$10,544
2024	TB2MU	01	PCC	Preventive Maintenance	\$6,324
2024	TBMU	01	PCC	Preventive Maintenance	\$8,719
2024	TBMU	02	PCC	Preventive Maintenance	\$55,513
2024	TBMU	03	PCC	Preventive Maintenance	\$3,309
2024	TBMU	04	PCC	Preventive Maintenance	\$6,869
2024	TBMU	05	PCC	Preventive Maintenance	\$7,305
2024	TH01MU	01	AC	Major Rehabilitation	\$120,280
2024	TH01MU	02	AAC	Major Rehabilitation	\$109,309
2024	TH01MU	03	PCC	Preventive Maintenance	\$14,234
2024	TH01MU	04	PCC	Preventive Maintenance	\$7,706

**Total Estimated Cost: \$887,000**

Table Notes:

1. See Figure 3 for the location of the branch and section.
2. Surface Type: AC = asphalt cement concrete; AAC = asphalt overlay on AC; PCC = portland cement concrete; APC = asphalt overlay on PCC.
3. Type of Repair: Major Rehabilitation such as pavement reconstruction or an overlay; Localized Preventive Maintenance such as crack sealing or patching.
4. The estimated costs provided are of a general nature for the entire state and may require adjustment to reflect specific conditions at Muscatine Municipal Airport.

The recommendations made in this report are based on a broad network-level analysis and meant to provide Muscatine Municipal Airport with an indication of the type of pavement-related work required during the next 5 years. Further engineering investigation may be necessary to identify which repair action is most appropriate. In addition, the cost estimates provided are based on overall unit costs for the entire state, and Muscatine Municipal Airport should adjust the plan to reflect local costs.

Because an unlimited budget was used in the analysis, it is possible that the pavement repair program may need to be adjusted to consider economic or operational constraints. The

identification of a project need does not necessarily mean that State or Federal funding will be available in the year it is indicated. It is important to remember that regardless of the recommendations presented within this report, Muscatine Municipal Airport is responsible for repairing pavements where existing conditions pose a hazard to safe operations.

### **General Maintenance Recommendations**

In addition to the specific maintenance actions presented in Appendix F, it is recommended that the following strategies be considered for prolonging pavement life:

1. Regularly inspect all safety areas of the airport and document all inspection activity. A sample form that can be used to perform these inspections is provided in Table 3 of this report.
2. Provide a method of tracking all maintenance activities that occur because of these inspections. This documentation needs to be reported to the FAA and the Iowa DOT. This information is used to update the APMS records and is required to remain in compliance with Public Law 103-305 (see the next section of this report for further information on this law).
3. Conduct an aggressive campaign against weed growth through timely herbicide applications and mowing programs of the safety areas. Vegetation growth in pavement cracks is destructive and significantly increases the rate of pavement deterioration.
4. Implement a periodic crack and joint sealing program. Keeping water and debris out of the pavement system by sealing cracks and joints is a proven and cost-effective method of extending the life of the pavement system.
5. Ensure all edges of pavement maintain the required 1.5-inch lip. This enables the water to drain away from the pavement system.
6. Closely monitor the movement of heavy equipment (particularly farming, construction, mowing, and fueling equipment) to make sure it is only operating on pavements that are designed to accommodate heavy loads. Failure to restrict heavy equipment to appropriate areas may result in the premature failure of airport pavements.

### **FAA Requirements (Public Law 103-305)**

Because Muscatine Municipal Airport is in the National Plan of Integrated Airport Systems (NPIAS), the airport sponsor is required to keep the airport in a viable operating condition. This includes maintaining airport pavements in accordance with Public Law 103-305. Public Law 103-305 states that after January 1, 1995, NPIAS airport sponsors must provide assurances or certifications that an airport has implemented an effective airport pavement maintenance management system (PMMS) before the airport will be considered for Federal funding of pavement replacement or reconstruction projects. To be in full compliance with the Federal law, the PMMS must include the following components at minimum: pavement inventory, pavement inspections, record keeping, information retrieval, and program funding.

This report serves as a complete pavement inventory and detailed inspection. To remain in compliance with the law, Muscatine Municipal Airport will also need to undertake monthly drive-by inspections of pavement conditions and track pavement-related maintenance activities.

FAA Advisory Circular 150/5380-7B provides detailed guidance pertaining to the requirements for an acceptable pavement management program (PMP). Appendix A of the FAA Advisory Circular 150/5380-7B outlines what needs to be included in a PMP to remain in compliance with this law and Grant Assurance #11. The following is a copy of this appendix, along with

instructions for supplementing this report so that all requirements are met. Note that the italicized text is a direct quotation from the FAA Advisory Circular.

*FAA Advisory Circular 150/5830-7B, Appendix A. Pavement Management Program (PMP)*

**A-1.0.** *An effective PMP specifies the procedures to follow to assure that proper preventative and remedial pavement maintenance is performed. The program should identify funding or anticipated funding and other resources available to provide remedial and preventive maintenance activities. An airport sponsor may use any format deemed appropriate, but the program needs to, as a minimum, include the following:*

**A-1.1. Pavement Inventory.** *The following must be depicted:*

- a. *Identification of all runways, taxiways, and aprons with pavement broken down into sections each having similar properties.*

The network definition map provided in Figure 3 of this report shows the location of all runways, taxiways, aprons, and T-hangars at Muscatine Municipal Airport. If any new pavements are constructed or any pavement areas are permanently closed, this map must be updated. Project plans should be submitted to the Iowa DOT after project completion.

- b. *Dimensions of pavement sections.*

The dimensions of all runways, taxiways, aprons, and T-hangars are stored in the PAVER database. Appendix C provides information on length, width, and area. In addition, the network definition map provided in Figure 3 is drawn to scale. Any changes to pavement dimensions must be recorded.

- c. *Type of pavement surface.*

The type of pavement for each section at Muscatine Municipal Airport is listed in Table 1 of this report and is also stored in the PAVER database. Any changes to the pavement type (through an overlay or reconstruction) must be recorded.

- d. *Year of construction and/or most recent major rehabilitation.*

Dates for pavement construction, rehabilitation, or reconstruction must be recorded. The current pavement history for Muscatine Municipal Airport is provided in Appendix D of this report.

- e. *Whether AIP [Airport Improvement Program] or PFC [Passenger Facility Charge] funds were used to construct, reconstruct, or repair the pavement.*

Funding sources for all pavement projects should be recorded.

**A-1.2. PMP Pavement Inspection Schedule.** *Airports must perform a detailed inspection of airfield pavements at least once a year for the PMP. If a pavement condition index (PCI) survey is performed, as set forth in ASTM D5340, "Standard Test Method for Airport Pavement Condition Index Surveys," the frequency of the detailed inspection by PCI surveys may be extended to three years. Less comprehensive routine daily, weekly, and monthly maintenance inspections required for operations should be addressed.*

This report consists of a detailed inspection that will extend the inspection period to 3 years. It is the airport sponsor's responsibility to perform monthly drive-by inspections. A sample pavement inspection report form is provided in Table 3 of this report.

**A-1.3. Record Keeping.** *The airport must record and keep on file complete information about all detailed inspections and maintenance performed until the pavement system is replaced. The types of distress, their locations, and remedial action, scheduled or performed, must be documented. The minimum information recorded includes:*

- a. *Inspection date*
- b. *Location*
- c. *Distress types*
- d. *Maintenance scheduled or performed*

Items A through C are satisfied by this inspection report. Item D is the responsibility of the airport, as is record keeping of the monthly drive-by inspections.

**A-1.4. Information Retrieval.** *An airport sponsor may use any form of record keeping it deems appropriate so long as the information and records from the pavement survey can generate required reports, as necessary.*

Keep this report, monthly drive-by inspection reports, construction updates, and all records of maintenance activities in a readily accessible location so that they can be easily retrieved as requested by the FAA.



Table 3. Pavement inspection report.

Inspected By: \_\_\_\_\_

Date Inspected: \_\_\_\_\_

Branch	Section	Distress Description/Dimensions/Severity/ Recommended Action	Description of Repair	Date Performed	Cost	Funding Source
A01MU	01					
A01MU	02					
A01MU	03					
R06MU	01					
R12MU	01					
TA1MU	01					

Table 3. Pavement inspection report (continued).

Inspected By: \_\_\_\_\_

Date Inspected: \_\_\_\_\_

Branch	Section	Distress Description/Dimensions/Severity/ Recommended Action	Description of Repair	Date Performed	Cost	Funding Source
TA1MU	02					
TAMU	01					
TAMU	02					
TAMU	03					
TAMU	04					
TAMU	05					

Table 3. Pavement inspection report (continued).

Inspected By: \_\_\_\_\_

Date Inspected: \_\_\_\_\_

Branch	Section	Distress Description/Dimensions/Severity/ Recommended Action	Description of Repair	Date Performed	Cost	Funding Source
TB1MU	01					
TB2MU	01					
TBMU	01					
TBMU	02					
TBMU	03					
TBMU	04					

Table 3. Pavement inspection report (continued).

Inspected By: \_\_\_\_\_

Date Inspected: \_\_\_\_\_

Branch	Section	Distress Description/Dimensions/Severity/ Recommended Action	Description of Repair	Date Performed	Cost	Funding Source
TBMU	05					
TBMU	06					
TCMU	01					
TH01MU	01					
TH01MU	02					
TH01MU	03					

Table 3. Pavement inspection report (continued).

Inspected By: \_\_\_\_\_

Date Inspected: \_\_\_\_\_

Branch	Section	Distress Description/Dimensions/Severity/ Recommended Action	Description of Repair	Date Performed	Cost	Funding Source
TH01MU	04					
TH01MU	05					

Table Note: See Figure 3 for the location of the branch and section.

---

## **SUMMARY**

This report documents the results of the pavement evaluation conducted at Muscatine Municipal Airport. A visual inspection of the pavements in 2023 found that the overall condition of the pavement network is a PCI of 86. A 5-year pavement repair program, shown in Table 2, was generated for Muscatine Municipal Airport, which revealed that approximately \$887,000 needs to be expended on M&R. Muscatine Municipal Airport should utilize these study results to assist in planning for future maintenance needs as part of the airport CIP planning process.

## **APPENDIX A**

### **CAUSE OF DISTRESS TABLES**

Table A-1. Cause of pavement distress, asphalt-surfaced pavements.

<b>Distress Type</b>	<b>Probable Cause of Distress</b>
Alligator Cracking	Fatigue failure of the asphalt surface under repeated traffic loading.
Bleeding	Excessive amounts of asphalt cement or tars in the mix or low air void content, or both.
Block Cracking	Shrinkage of the asphalt and daily temperature cycling; it is not load associated.
Corrugation	Traffic action combined with an unstable pavement layer.
Depression	Settlement of the foundation soil or can be "built up" during construction.
Jet-Blast Erosion	Bituminous binder has been burned or carbonized.
Joint Reflection Cracking	Movement of the concrete slab beneath the asphalt surface due to thermal and moisture changes.
L&T Cracking	Cracks may be caused by (1) a poorly constructed paving lane joint, (2) shrinkage of the asphalt surface due to low temperatures or hardening of the asphalt, or (3) reflective cracking caused by cracks in an underlying PCC slab.
Oil Spillage	Deterioration or softening of the pavement surface caused by the spilling of oil, fuel, or other solvents.
Patching	N/A
Polished Aggregate	Repeated traffic applications.
Raveling	Asphalt binder may have hardened significantly, causing coarse aggregate pieces to dislodge.
Rutting	Usually caused by consolidation or lateral movement of the materials due to traffic loads.
Shoving	Where PCC pavements adjoin flexible pavements, PCC "growth" may shove the asphalt pavement.
Slippage Cracking	Low strength surface mix or poor bond between the surface and the next layer of the pavement structure.
Swelling	Usually caused by frost action or by swelling soil.
Weathering	Asphalt binder and/or fine aggregate may wear away as the pavement ages and hardens.



Table A-2. Cause of pavement distress, PCC pavements.

<b>Distress Type</b>	<b>Probable Cause of Distress</b>
ASR	Chemical reaction of alkalis in the portland cement with certain reactive silica minerals. ASR may be accelerated by the use of chemical pavement deicers.
Blowup	Incompressible materials in the joints.
Corner Break	Load repetition combined with loss of support and curling stresses.
Durability Cracking	Concrete's inability to withstand environmental factors such as freeze-thaw cycles.
Faulting	Upheaval or consolidation.
Joint Seal Damage	Stripping of joint sealant, extrusion of joint sealant, weed growth, hardening of the filler (oxidation), loss of bond to the slab edges, or absence of sealant in the joint.
LTD Cracking	Combination of load repetition, curling stresses, and shrinkage stresses.
Patching (Small and Large)	N/A
Popouts	Freeze-thaw action in combination with expansive aggregates.
Pumping	Poor drainage, poor joint sealant.
Scaling	Over finishing of concrete, deicing salts, improper construction, freeze-thaw cycles, and poor aggregate.
Shattered Slab	Load repetition.
Shrinkage Cracking	Setting and curing of the concrete.
Spalling (Joint and Corner)	Excessive stresses at the joint caused by infiltration of incompressible materials or traffic loads; weak concrete at the joint combined with traffic loads.

## **APPENDIX B**

# **INSPECTION PHOTOGRAPHS**

A01MU-01. Overview.



A01MU-01. ASR (Sample Unit No. 47).





A01MU-02. Overview.



A01MU-02. Joint Seal Damage (Sample Unit No. 02).





A01MU-03. Overview.



A01MU-03. ASR (Sample Unit No. 02).





R06MU-01. Overview.



R06MU-01. Joint Seal Damage (Sample Unit No. 142).





R06MU-01. Large Patching (Additional Sample Unit No. 063).



R12MU-01. Overview.





R12MU-01. Corner Spalling (Sample Unit No. 29).



TA1MU-01. Overview.





TA1MU-02. Overview.



TA1MU-02. Joint Spalling (Sample Unit No. 04).



TAMU-01. Overview.



TAMU-01. Joint Seal Damage (Sample Unit No. 04).





TAMU-02. Overview.



TAMU-03. Overview.



TAMU-04. Overview (1).



TAMU-04. Overview (2).





TAMU-05. Overview.



TAMU-05. Joint Seal Damage (Sample Unit No. 04).





TB1MU-01. Overview.



TB1MU-01. Large Patching (Sample Unit No. 04).





TB2MU-01. Overview.



TB2MU-01. Corner Break (Sample Unit No. 02).





TBMU-01. Overview.



TBMU-01. ASR (Sample Unit No. 01).





TBMU-02. Overview.



TBMU-02. LTD Cracking (Sample Unit No. 31).





TBMU-03. Overview.



TBMU-03. Joint Seal Damage (Sample Unit No. 03).





TBMU-04. Overview.



TBMU-04. Faulting (Sample Unit No. 06).



TBMU-05. Overview.



TBMU-06. Overview.





TCMU-01. Overview.



TCMU-01. Joint Spalling (Sample Unit No. 04).





TH01MU-01. Overview.



TH01MU-01. Alligator Cracking (Sample Unit No. 01).





TH01MU-02. Overview.



TH01MU-02. Alligator Cracking (Sample Unit No. 02).





TH01MU-03. Overview.



TH01MU-03. Joint Seal Damage (Sample Unit No. 08).



TH01MU-03. LTD Cracking (Sample Unit No. 10).



TH01MU-04. Overview.





TH01MU-04. LTD Cracking (Sample Unit No. 04).



TH01MU-05. Overview.



**APPENDIX C**

**INSPECTION REPORT**

# RE-INSPECTION REPORT MUSCATINE MUNICIPAL AIRPORT

Pavement Database: IA 2023

Generate Date: 4/16/2024

Network ID: MUT

Page 1

## Branch - Section ID: A01MU - 001

Branch Name: APRON 01

Use: APRON

LCD: 9/2/1991

PCI Family: IowaPCCAP\_SE\_CommEnhanced

Surface Type: PCC

Rank: P

Section Area (sf): 177,979.30

Length (ft): 326.50

Width (ft): 519.00

From: SW END OF T02MU-01

To: SOUTH END OF A01MU-01

Slabs: 1,167

Section Comments:

Slab Length (ft): 12.50

Slab Width (ft): 12.20

Joint Length (ft): 27,938.77

Last Insp Date: 11/8/2023

Inspection Comments:

PCI: 81

Total Samples: 59

Surveyed: 8

### Sample Number: 08

Sample Type: R

Sample Comments:

Sample PCI: 84

Sample Area (Slabs): 20.00

65 JT SEAL DMG	H	20.00 Slabs
66 SMALL PATCH	L	1.00 Slabs
73 SHRINKAGE CR	N	1.00 Slabs
74 JOINT SPALL	L	1.00 Slabs

### Sample Number: 14

Sample Type: R

Sample Comments:

Sample PCI: 87

Sample Area (Slabs): 20.00

65 JT SEAL DMG	H	20.00 Slabs
66 SMALL PATCH	L	1.00 Slabs

### Sample Number: 19

Sample Type: R

Sample Comments:

Sample PCI: 84

Sample Area (Slabs): 20.00

65 JT SEAL DMG	H	20.00 Slabs
66 SMALL PATCH	L	1.00 Slabs
70 SCALING	L	1.00 Slabs
73 SHRINKAGE CR	N	2.00 Slabs

### Sample Number: 26

Sample Type: R

Sample Comments:

Sample PCI: 63

Sample Area (Slabs): 20.00

63 LINEAR CR	M	3.00 Slabs
65 JT SEAL DMG	H	20.00 Slabs
68 POPOUTS	N	1.00 Slabs
74 JOINT SPALL	M	1.00 Slabs



# RE-INSPECTION REPORT MUSCATINE MUNICIPAL AIRPORT

Pavement Database: IA 2023

Generate Date: 4/16/2024

Network ID: MUT

Page 2

## Sample Number: 31

Sample Type: R

Sample Comments:

Sample PCI: 85

Sample Area (Slabs): 20.00

65 JT SEAL DMG

H

20.00 Slabs

73 SHRINKAGE CR

N

3.00 Slabs

## Sample Number: 38

Sample Type: R

Sample Comments:

Sample PCI: 84

Sample Area (Slabs): 20.00

65 JT SEAL DMG

H

20.00 Slabs

68 POPOUTS

N

1.00 Slabs

## Sample Number: 47

Sample Type: R

Sample Comments:

Sample PCI: 83

Sample Area (Slabs): 20.00

65 JT SEAL DMG

H

20.00 Slabs

76 ASR

L

1.00 Slabs

## Sample Number: 49

Sample Type: R

Sample Comments:

Sample PCI: 78

Sample Area (Slabs): 20.00

65 JT SEAL DMG

H

20.00 Slabs

68 POPOUTS

N

5.00 Slabs

73 SHRINKAGE CR

N

1.00 Slabs

# RE-INSPECTION REPORT MUSCATINE MUNICIPAL AIRPORT

Pavement Database: IA 2023

Generate Date: 4/16/2024

Network ID: MUT

Page 3

## Branch - Section ID: A01MU - 002

Branch Name: APRON 01

Use: APRON

LCD: 4/1/2016

PCI Family: IowaPCCAP\_SE\_CommEnhanced

Surface Type: PCC

Rank: P

Section Area (sf): 12,444.41

Length (ft): 150.00

Width (ft): 125.00

From: SEE MAP

To: SEE MAP

Slabs: 80

Section Comments:

Slab Length (ft): 12.50

Slab Width (ft): 12.50

Joint Length (ft): 1,808.59

Last Insp Date: 11/8/2023

Inspection Comments:

PCI: 88

Total Samples: 4

Surveyed: 3

### Sample Number: 01

Sample Type: R

Sample Comments:

Sample PCI: 88

Sample Area (Slabs): 19.00

65 JT SEAL DMG

H

19.00 Slabs

### Sample Number: 02

Sample Type: R

Sample Comments:

Sample PCI: 88

Sample Area (Slabs): 22.00

65 JT SEAL DMG

H

22.00 Slabs

### Sample Number: 03

Sample Type: R

Sample Comments:

Sample PCI: 88

Sample Area (Slabs): 20.00

65 JT SEAL DMG

H

20.00 Slabs

# RE-INSPECTION REPORT MUSCATINE MUNICIPAL AIRPORT

Pavement Database: IA 2023

Generate Date: 4/16/2024

Network ID: MUT

Page 4

## Branch - Section ID: A01MU - 003

Branch Name: APRON 01

Use: APRON

LCD: 7/1/1991

PCI Family: IowaPCCAP\_SE\_CommEnhanced

Surface Type: PCC

Rank: P

Section Area (sf): 6,299.00

Length (ft): 100.00

Width (ft): 50.00

From: SEE MAP

To: SEE MAP

Slabs: 55

Section Comments:

Slab Length (ft): 10.50

Slab Width (ft): 11.00

Joint Length (ft): 983.57

Last Insp Date: 11/8/2023

Inspection Comments:

PCI: 59

Total Samples: 2

Surveyed: 2

### Sample Number: 01

Sample Type: R

Sample Comments:

Sample PCI: 62

Sample Area (Slabs): 26.00

63 LINEAR CR	M	2.00 Slabs
65 JT SEAL DMG	H	26.00 Slabs
66 SMALL PATCH	L	2.00 Slabs
66 SMALL PATCH	M	2.00 Slabs
71 FAULTING	L	2.00 Slabs
74 JOINT SPALL	M	1.00 Slabs
76 ASR	L	1.00 Slabs

### Sample Number: 02

Sample Type: R

Sample Comments:

Sample PCI: 56

Sample Area (Slabs): 29.00

63 LINEAR CR	M	1.00 Slabs
65 JT SEAL DMG	H	29.00 Slabs
76 ASR	L	9.00 Slabs
76 ASR	M	4.00 Slabs

# RE-INSPECTION REPORT MUSCATINE MUNICIPAL AIRPORT

Pavement Database: IA 2023

Generate Date: 4/16/2024

Network ID: MUT

Page 5

## Branch - Section ID: R06MU - 001

Branch Name: RUNWAY 06/24

Use: RUNWAY

LCD: 6/2/2015

PCI Family: IowaPCCRW\_SE\_Enhanced

Surface Type: PCC

Rank: P

Section Area (sf): 549,988.84

Length (ft): 5,500.00

Width (ft): 100.00

From: RUNWAY 06 END

To: RUNWAY 24 END

Slabs: 3,520

Section Comments:

Slab Length (ft): 12.50

Slab Width (ft): 12.50

Joint Length (ft): 82,398.33

Last Insp Date: 11/8/2023

Inspection Comments:

PCI: 87

Total Samples: 175

Surveyed: 19

### Sample Number: 001

Sample Type: R

Sample Comments:

Sample PCI: 88

Sample Area (Slabs): 20.00

65 JT SEAL DMG

H

20.00 Slabs

### Sample Number: 009

Sample Type: R

Sample Comments:

Sample PCI: 88

Sample Area (Slabs): 20.00

65 JT SEAL DMG

H

20.00 Slabs

### Sample Number: 024

Sample Type: R

Sample Comments:

Sample PCI: 88

Sample Area (Slabs): 20.00

65 JT SEAL DMG

H

20.00 Slabs

### Sample Number: 039

Sample Type: R

Sample Comments:

Sample PCI: 88

Sample Area (Slabs): 20.00

65 JT SEAL DMG

H

20.00 Slabs

### Sample Number: 046

Sample Type: R

Sample Comments:

Sample PCI: 81

Sample Area (Slabs): 20.00

65 JT SEAL DMG

H

20.00 Slabs

71 FAULTING

L

3.00 Slabs

### Sample Number: 062

Sample Type: R

Sample Comments:

Sample PCI: 88

Sample Area (Slabs): 20.00

65 JT SEAL DMG

H

20.00 Slabs



# RE-INSPECTION REPORT MUSCATINE MUNICIPAL AIRPORT

Pavement Database: IA 2023

Generate Date: 4/16/2024

Network ID: MUT

Page 6

## Sample Number: 063

Sample Type: A

Sample Comments:

Sample PCI: 85

Sample Area (Slabs): 20.00

65 JT SEAL DMG

H

20.00 Slabs

67 LARGE PATCH

L

1.00 Slabs

## Sample Number: 071

Sample Type: R

Sample Comments:

Sample PCI: 88

Sample Area (Slabs): 20.00

65 JT SEAL DMG

H

20.00 Slabs

## Sample Number: 087

Sample Type: R

Sample Comments:

Sample PCI: 88

Sample Area (Slabs): 20.00

65 JT SEAL DMG

H

20.00 Slabs

## Sample Number: 103

Sample Type: R

Sample Comments:

Sample PCI: 83

Sample Area (Slabs): 20.00

65 JT SEAL DMG

H

20.00 Slabs

71 FAULTING

L

2.00 Slabs

## Sample Number: 110

Sample Type: R

Sample Comments:

Sample PCI: 88

Sample Area (Slabs): 20.00

65 JT SEAL DMG

H

20.00 Slabs

## Sample Number: 119

Sample Type: R

Sample Comments:

Sample PCI: 88

Sample Area (Slabs): 20.00

65 JT SEAL DMG

H

20.00 Slabs

## Sample Number: 126

Sample Type: R

Sample Comments:

Sample PCI: 88

Sample Area (Slabs): 20.00

65 JT SEAL DMG

H

20.00 Slabs

## Sample Number: 135

Sample Type: R

Sample Comments:

Sample PCI: 88

Sample Area (Slabs): 20.00

65 JT SEAL DMG

H

20.00 Slabs

## Sample Number: 142

Sample Type: R

Sample Comments:

Sample PCI: 88

Sample Area (Slabs): 20.00

65 JT SEAL DMG

H

20.00 Slabs

# RE-INSPECTION REPORT MUSCATINE MUNICIPAL AIRPORT

Pavement Database: IA 2023

Generate Date: 4/16/2024

Network ID: MUT

Page 7

---

## Sample Number: 151

Sample Type: R  
Sample PCI: 88  
Sample Area (Slabs): 20.00

Sample Comments:

65 JT SEAL DMG H 20.00 Slabs

---

## Sample Number: 158

Sample Type: R  
Sample PCI: 88  
Sample Area (Slabs): 20.00

Sample Comments:

65 JT SEAL DMG H 20.00 Slabs

---

## Sample Number: 167

Sample Type: R  
Sample PCI: 88  
Sample Area (Slabs): 20.00

Sample Comments:

65 JT SEAL DMG H 20.00 Slabs

---

## Sample Number: 174

Sample Type: R  
Sample PCI: 78  
Sample Area (Slabs): 20.00

Sample Comments:

65 JT SEAL DMG H 20.00 Slabs  
74 JOINT SPALL L 3.00 Slabs  
75 CORNER SPALL M 2.00 Slabs

# RE-INSPECTION REPORT MUSCATINE MUNICIPAL AIRPORT

Pavement Database: IA 2023

Generate Date: 4/16/2024

Network ID: MUT

Page 8

## Branch - Section ID: R12MU - 001

Branch Name: RUNWAY 12/30

Use: RUNWAY

LCD: 10/30/1999

PCI Family: IowaPCCRW\_SE\_Enhanced

Surface Type: PCC

Rank: S

Section Area (sf): 300,000.01

Length (ft): 4,000.00

Width (ft): 75.00

From: RUNWAY 12 END

To: RUNWAY 30 END

Slabs: 1,920

Section Comments:

Slab Length (ft): 12.50

Slab Width (ft): 12.50

Joint Length (ft): 43,925.00

Last Insp Date: 11/8/2023

Inspection Comments:

PCI: 85

Total Samples: 80

Surveyed: 9

### Sample Number: 04

Sample Type: R

Sample Comments:

Sample PCI: 88

Sample Area (Slabs): 24.00

65 JT SEAL DMG

H

24.00 Slabs

### Sample Number: 11

Sample Type: R

Sample Comments:

Sample PCI: 88

Sample Area (Slabs): 24.00

65 JT SEAL DMG

H

24.00 Slabs

### Sample Number: 20

Sample Type: R

Sample Comments:

Sample PCI: 84

Sample Area (Slabs): 24.00

65 JT SEAL DMG

H

24.00 Slabs

71 FAULTING

L

1.00 Slabs

### Sample Number: 29

Sample Type: R

Sample Comments:

Sample PCI: 85

Sample Area (Slabs): 24.00

65 JT SEAL DMG

H

24.00 Slabs

75 CORNER SPALL

M

1.00 Slabs

### Sample Number: 38

Sample Type: R

Sample Comments:

Sample PCI: 78

Sample Area (Slabs): 24.00

65 JT SEAL DMG

H

24.00 Slabs

66 SMALL PATCH

L

1.00 Slabs

66 SMALL PATCH

M

1.00 Slabs

71 FAULTING

L

2.00 Slabs

74 JOINT SPALL

L

1.00 Slabs

# RE-INSPECTION REPORT MUSCATINE MUNICIPAL AIRPORT

Pavement Database: IA 2023

Generate Date: 4/16/2024

Network ID: MUT

Page 9

## Sample Number: 47

Sample Type: R

Sample Comments:

Sample PCI: 84

Sample Area (Slabs): 24.00

65 JT SEAL DMG

H

24.00 Slabs

71 FAULTING

L

1.00 Slabs

## Sample Number: 56

Sample Type: R

Sample Comments:

Sample PCI: 80

Sample Area (Slabs): 24.00

65 JT SEAL DMG

H

24.00 Slabs

71 FAULTING

L

4.00 Slabs

## Sample Number: 65

Sample Type: R

Sample Comments:

Sample PCI: 88

Sample Area (Slabs): 24.00

65 JT SEAL DMG

H

24.00 Slabs

## Sample Number: 76

Sample Type: R

Sample Comments:

Sample PCI: 88

Sample Area (Slabs): 24.00

65 JT SEAL DMG

H

24.00 Slabs



# RE-INSPECTION REPORT MUSCATINE MUNICIPAL AIRPORT

Pavement Database: IA 2023

Generate Date: 4/16/2024

Network ID: MUT

Page 10

## Branch - Section ID: TA1MU - 001

Branch Name: TAXIWAY A1

Use: TAXIWAY

LCD: 7/3/2021

PCI Family: IowaPCCTW\_SE\_Enhanced

Surface Type: PCC

Rank: P

Section Area (sf): 13,758.00

Length (ft): 119.00

Width (ft): 80.00

From: TAXIWAY 06

To: SEE MAP

Slabs: 157

Section Comments: avg

Slab Length (ft): 10.00

Slab Width (ft): 8.75

Joint Length (ft): 2,660.55

Last Insp Date: 11/8/2023

Inspection Comments:

PCI: 100

Total Samples: 10

Surveyed: 5

### Sample Number: 01

Sample Type: R

Sample Comments:

Sample PCI: 100

Sample Area (Slabs): 19.00

NO DISTRESS

### Sample Number: 02

Sample Type: R

Sample Comments:

Sample PCI: 100

Sample Area (Slabs): 20.00

NO DISTRESS

### Sample Number: 03

Sample Type: R

Sample Comments:

Sample PCI: 100

Sample Area (Slabs): 21.00

NO DISTRESS

### Sample Number: 04

Sample Type: R

Sample Comments:

Sample PCI: 100

Sample Area (Slabs): 23.00

NO DISTRESS

### Sample Number: 07

Sample Type: R

Sample Comments:

Sample PCI: 100

Sample Area (Slabs): 20.00

NO DISTRESS

# RE-INSPECTION REPORT MUSCATINE MUNICIPAL AIRPORT

Pavement Database: IA 2023

Generate Date: 4/16/2024

Network ID: MUT

Page 11

## Branch - Section ID: TA1MU - 002

Branch Name: TAXIWAY A1

Use: TAXIWAY

LCD: 6/2/2015

PCI Family: IowaPCCTW\_SE\_Enhanced

Surface Type: PCC

Rank: P

Section Area (sf): 12,153.00

Length (ft): 210.00

Width (ft): 50.00

From: RUNWAY 06/24

To: SEE MAP

Slabs: 139

Section Comments:

Slab Length (ft): 10.00

Slab Width (ft): 8.75

Joint Length (ft): 2,303.28

Last Insp Date: 11/8/2023

Inspection Comments:

PCI: 88

Total Samples: 6

Surveyed: 4

### Sample Number: 01

Sample Type: R

Sample Comments:

Sample PCI: 88

Sample Area (Slabs): 24.00

65 JT SEAL DMG

H

24.00 Slabs

### Sample Number: 04

Sample Type: R

Sample Comments:

Sample PCI: 86

Sample Area (Slabs): 18.00

65 JT SEAL DMG

H

18.00 Slabs

74 JOINT SPALL

L

1.00 Slabs

### Sample Number: 05

Sample Type: R

Sample Comments:

Sample PCI: 88

Sample Area (Slabs): 27.00

65 JT SEAL DMG

H

27.00 Slabs

### Sample Number: 06

Sample Type: R

Sample Comments:

Sample PCI: 88

Sample Area (Slabs): 27.00

65 JT SEAL DMG

H

27.00 Slabs

# RE-INSPECTION REPORT MUSCATINE MUNICIPAL AIRPORT

Pavement Database: IA 2023

Generate Date: 4/16/2024

Network ID: MUT

Page 12

## Branch - Section ID: TAMU - 001

Branch Name: TAXIWAY A

Use: TAXIWAY

LCD: 6/2/2015

PCI Family: IowaPCCTW\_SE\_Enhanced

Surface Type: PCC

Rank: P

Section Area (sf): 9,803.00

Length (ft): 210.00

Width (ft): 43.00

From: RUNWAY 06/24

To: SEE MAP

Slabs: 112

Section Comments:

Slab Length (ft): 10.00

Slab Width (ft): 8.75

Joint Length (ft): 1,825.99

Last Insp Date: 11/8/2023

Inspection Comments:

PCI: 79

Total Samples: 6

Surveyed: 4

### Sample Number: 01

Sample Type: R

Sample Comments:

Sample PCI: 79

Sample Area (Slabs): 20.00

65 JT SEAL DMG	H	20.00 Slabs
71 FAULTING	L	3.00 Slabs
74 JOINT SPALL	L	1.00 Slabs

### Sample Number: 02

Sample Type: R

Sample Comments:

Sample PCI: 79

Sample Area (Slabs): 20.00

65 JT SEAL DMG	H	20.00 Slabs
71 FAULTING	L	3.00 Slabs
74 JOINT SPALL	L	1.00 Slabs

### Sample Number: 04

Sample Type: R

Sample Comments:

Sample PCI: 73

Sample Area (Slabs): 21.00

65 JT SEAL DMG	L	21.00 Slabs
70 SCALING	M	1.00 Slabs
71 FAULTING	L	5.00 Slabs
74 JOINT SPALL	M	1.00 Slabs

### Sample Number: 05

Sample Type: R

Sample Comments:

Sample PCI: 88

Sample Area (Slabs): 15.00

65 JT SEAL DMG	M	15.00 Slabs
71 FAULTING	L	1.00 Slabs

# RE-INSPECTION REPORT MUSCATINE MUNICIPAL AIRPORT

Pavement Database: IA 2023

Generate Date: 4/16/2024

Network ID: MUT

Page 13

## Branch - Section ID: TAMU - 002

Branch Name: TAXIWAY A

Use: TAXIWAY

LCD: 7/3/2021

PCI Family: IowaPCCTW\_SE\_Enhanced

Surface Type: PCC

Rank: P

Section Area (sf): 8,903.00

Length (ft): 120.00

Width (ft): 60.00

From: TAXIWAY 03

To: SEE MAP

Slabs: 102

Section Comments: avg slab sizes

Slab Length (ft): 10.00

Slab Width (ft): 8.75

Joint Length (ft): 1,685.21

Last Insp Date: 11/8/2023

Inspection Comments:

PCI: 100

Total Samples: 5

Surveyed: 3

### Sample Number: 01

Sample Type: R

Sample Comments:

Sample PCI: 100

Sample Area (Slabs): 26.00

NO DISTRESS

### Sample Number: 02

Sample Type: R

Sample Comments:

Sample PCI: 100

Sample Area (Slabs): 25.00

NO DISTRESS

### Sample Number: 03

Sample Type: R

Sample Comments:

Sample PCI: 100

Sample Area (Slabs): 20.00

NO DISTRESS



# RE-INSPECTION REPORT MUSCATINE MUNICIPAL AIRPORT

Pavement Database: IA 2023

Generate Date: 4/16/2024

Network ID: MUT

Page 14

## Branch - Section ID: TAMU - 003

Branch Name: TAXIWAY A

Use: TAXIWAY

LCD: 7/3/2021

PCI Family: IowaPCCTW\_SE\_Enhanced

Surface Type: PCC

Rank: P

Section Area (sf): 191,022.00

Length (ft): 5,458.00

Width (ft): 35.00

From: SEE MAP

To: SEE MAP

Slabs: 2,183

Section Comments:

Slab Length (ft): 10.00

Slab Width (ft): 8.75

Joint Length (ft): 35,440.52

Last Insp Date: 11/8/2023

Inspection Comments:

PCI: 100

Total Samples: 111

Surveyed: 11

### Sample Number: 06

Sample Type: R

Sample Comments:

Sample PCI: 100

Sample Area (Slabs): 20.00

NO DISTRESS

### Sample Number: 106

Sample Type: R

Sample Comments:

Sample PCI: 100

Sample Area (Slabs): 20.00

NO DISTRESS

### Sample Number: 16

Sample Type: R

Sample Comments:

Sample PCI: 100

Sample Area (Slabs): 20.00

NO DISTRESS

### Sample Number: 26

Sample Type: R

Sample Comments:

Sample PCI: 100

Sample Area (Slabs): 20.00

NO DISTRESS

### Sample Number: 36

Sample Type: R

Sample Comments:

Sample PCI: 100

Sample Area (Slabs): 20.00

NO DISTRESS

### Sample Number: 46

Sample Type: R

Sample Comments:

Sample PCI: 100

Sample Area (Slabs): 20.00

NO DISTRESS

# RE-INSPECTION REPORT MUSCATINE MUNICIPAL AIRPORT

Pavement Database: IA 2023

Generate Date: 4/16/2024

Network ID: MUT

Page 15

---

**Sample Number: 56**

Sample Type: R  
Sample PCI: 100  
Sample Area (Slabs): 20.00  
NO DISTRESS

Sample Comments:

---

**Sample Number: 66**

Sample Type: R  
Sample PCI: 100  
Sample Area (Slabs): 20.00  
NO DISTRESS

Sample Comments:

---

**Sample Number: 76**

Sample Type: R  
Sample PCI: 100  
Sample Area (Slabs): 20.00  
NO DISTRESS

Sample Comments:

---

**Sample Number: 86**

Sample Type: R  
Sample PCI: 100  
Sample Area (Slabs): 20.00  
NO DISTRESS

Sample Comments:

---

**Sample Number: 96**

Sample Type: R  
Sample PCI: 100  
Sample Area (Slabs): 20.00  
NO DISTRESS

Sample Comments:

# RE-INSPECTION REPORT MUSCATINE MUNICIPAL AIRPORT

Pavement Database: IA 2023

Generate Date: 4/16/2024

Network ID: MUT

Page 16

## Branch - Section ID: TAMU - 004

Branch Name: TAXIWAY A

Use: TAXIWAY

LCD: 7/3/2021

PCI Family: IowaPCCTW\_SE\_Enhanced

Surface Type: PCC

Rank: P

Section Area (sf): 8,168.00

Length (ft): 117.00

Width (ft): 37.50

From: TAXIWAY 06

To: SEE MAP

Slabs: 93

Section Comments:

Slab Length (ft): 10.00

Slab Width (ft): 8.75

Joint Length (ft): 1,462.66

Last Insp Date: 11/8/2023

Inspection Comments:

PCI: 100

Total Samples: 5

Surveyed: 4

### Sample Number: 01

Sample Type: R

Sample Comments:

Sample PCI: 100

Sample Area (Slabs): 21.00

NO DISTRESS

### Sample Number: 02

Sample Type: R

Sample Comments:

Sample PCI: 100

Sample Area (Slabs): 20.00

NO DISTRESS

### Sample Number: 03

Sample Type: R

Sample Comments:

Sample PCI: 100

Sample Area (Slabs): 24.00

NO DISTRESS

### Sample Number: 04

Sample Type: R

Sample Comments:

Sample PCI: 100

Sample Area (Slabs): 23.00

NO DISTRESS

# RE-INSPECTION REPORT MUSCATINE MUNICIPAL AIRPORT

Pavement Database: IA 2023

Generate Date: 4/16/2024

Network ID: MUT

Page 17

## Branch - Section ID: TAMU - 005

Branch Name: TAXIWAY A

Use: TAXIWAY

LCD: 6/2/2015

PCI Family: IowaPCCTW\_SE\_Enhanced

Surface Type: PCC

Rank: P

Section Area (sf): 9,798.00

Length (ft): 210.00

Width (ft): 40.00

From: RUNWAY 24 END

To: SEE MAP

Slabs: 112

Section Comments:

Slab Length (ft): 10.00

Slab Width (ft): 8.75

Joint Length (ft): 1,807.96

Last Insp Date: 11/8/2023

Inspection Comments:

PCI: 88

Total Samples: 6

Surveyed: 4

### Sample Number: 01

Sample Type: R

Sample Comments:

Sample PCI: 88

Sample Area (Slabs): 15.00

65 JT SEAL DMG

H

15.00 Slabs

### Sample Number: 02

Sample Type: R

Sample Comments:

Sample PCI: 88

Sample Area (Slabs): 20.00

65 JT SEAL DMG

H

20.00 Slabs

### Sample Number: 04

Sample Type: R

Sample Comments:

Sample PCI: 88

Sample Area (Slabs): 20.00

65 JT SEAL DMG

H

20.00 Slabs

### Sample Number: 06

Sample Type: R

Sample Comments:

Sample PCI: 88

Sample Area (Slabs): 21.00

65 JT SEAL DMG

H

21.00 Slabs



# RE-INSPECTION REPORT MUSCATINE MUNICIPAL AIRPORT

Pavement Database: IA 2023

Generate Date: 4/16/2024

Network ID: MUT

Page 18

## Branch - Section ID: TB1MU - 001

Branch Name: TAXIWAY B1

Use: TAXIWAY

LCD: 10/30/1999

PCI Family: IowaPCCTW\_SE\_Enhanced

Surface Type: PCC

Rank: P

Section Area (sf): 21,343.00

Length (ft): 510.00

Width (ft): 37.50

From: SEE MAP

To: SEE MAP

Slabs: 137

Section Comments:

Slab Length (ft): 12.50

Slab Width (ft): 12.50

Joint Length (ft): 2,803.88

Last Insp Date: 11/8/2023

Inspection Comments:

PCI: 86

Total Samples: 6

Surveyed: 4

### Sample Number: 02

Sample Type: R

Sample Comments:

Sample PCI: 83

Sample Area (Slabs): 24.00

65 JT SEAL DMG

H

24.00 Slabs

71 FAULTING

L

1.00 Slabs

74 JOINT SPALL

L

1.00 Slabs

### Sample Number: 03

Sample Type: R

Sample Comments:

Sample PCI: 88

Sample Area (Slabs): 24.00

65 JT SEAL DMG

H

24.00 Slabs

### Sample Number: 04

Sample Type: R

Sample Comments:

Sample PCI: 85

Sample Area (Slabs): 24.00

65 JT SEAL DMG

H

24.00 Slabs

67 LARGE PATCH

L

1.00 Slabs

### Sample Number: 05

Sample Type: R

Sample Comments:

Sample PCI: 86

Sample Area (Slabs): 24.00

65 JT SEAL DMG

H

24.00 Slabs

75 CORNER SPALL

L

1.00 Slabs

# RE-INSPECTION REPORT MUSCATINE MUNICIPAL AIRPORT

Pavement Database: IA 2023

Generate Date: 4/16/2024

Network ID: MUT

Page 19

## Branch - Section ID: TB2MU - 001

Branch Name: TAXIWAY B2

Use: TAXIWAY

LCD: 7/2/2007

PCI Family: IowaPCCTW\_SE\_Enhanced

Surface Type: PCC

Rank: P

Section Area (sf): 12,059.00

Length (ft): 250.00

Width (ft): 35.00

From: TAXIWAY 08

To: RUNWAY 12/30

Slabs: 83

Section Comments:

Slab Length (ft): 12.50

Slab Width (ft): 11.67

Joint Length (ft): 1,605.27

Last Insp Date: 11/8/2023

Inspection Comments:

PCI: 80

Total Samples: 4

Surveyed: 3

### Sample Number: 01

Sample Type: R

Sample Comments:

Sample PCI: 82

Sample Area (Slabs): 21.00

63 LINEAR CR	M	1.00 Slabs
65 JT SEAL DMG	H	21.00 Slabs

### Sample Number: 02

Sample Type: R

Sample Comments:

Sample PCI: 72

Sample Area (Slabs): 25.00

62 CORNER BREAK	M	1.00 Slabs
63 LINEAR CR	M	1.00 Slabs
65 JT SEAL DMG	H	25.00 Slabs
70 SCALING	L	2.00 Slabs
71 FAULTING	L	1.00 Slabs

### Sample Number: 03

Sample Type: R

Sample Comments:

Sample PCI: 86

Sample Area (Slabs): 25.00

65 JT SEAL DMG	M	25.00 Slabs
66 SMALL PATCH	L	1.00 Slabs
74 JOINT SPALL	M	1.00 Slabs
75 CORNER SPALL	M	1.00 Slabs

# RE-INSPECTION REPORT MUSCATINE MUNICIPAL AIRPORT

Pavement Database: IA 2023

Generate Date: 4/16/2024

Network ID: MUT

Page 20

## Branch - Section ID: TBMU - 001

Branch Name: TAXIWAY B

Use: TAXIWAY

LCD: 6/1/2000

PCI Family: IowaPCCTW\_SE\_Enhanced

Surface Type: PCC

Rank: P

Section Area (sf): 20,781.00

Length (ft): 450.00

Width (ft): 37.50

From: RUNWAY 12 END

To: SEE MAP

Slabs: 133

Section Comments:

Slab Length (ft): 12.50

Slab Width (ft): 12.50

Joint Length (ft): 2,724.62

Last Insp Date: 11/8/2023

Inspection Comments:

PCI: 78

Total Samples: 7

Surveyed: 4

### Sample Number: 01

Sample Type: R

Sample Comments:

Sample PCI: 78

Sample Area (Slabs): 16.00

65 JT SEAL DMG	M	16.00 Slabs
71 FAULTING	L	2.00 Slabs
76 ASR	L	3.00 Slabs

### Sample Number: 03

Sample Type: R

Sample Comments:

Sample PCI: 83

Sample Area (Slabs): 16.00

65 JT SEAL DMG	H	16.00 Slabs
71 FAULTING	L	1.00 Slabs

### Sample Number: 04

Sample Type: R

Sample Comments:

Sample PCI: 69

Sample Area (Slabs): 16.00

65 JT SEAL DMG	H	16.00 Slabs
66 SMALL PATCH	L	1.00 Slabs
71 FAULTING	L	4.00 Slabs
76 ASR	L	3.00 Slabs

### Sample Number: 06

Sample Type: R

Sample Comments:

Sample PCI: 81

Sample Area (Slabs): 24.00

65 JT SEAL DMG	H	24.00 Slabs
76 ASR	L	5.00 Slabs

# RE-INSPECTION REPORT MUSCATINE MUNICIPAL AIRPORT

Pavement Database: IA 2023

Generate Date: 4/16/2024

Network ID: MUT

Page 21

## Branch - Section ID: TBMU - 002

Branch Name: TAXIWAY B

Use: TAXIWAY

LCD: 7/2/2007

PCI Family: IowaPCCTW\_SE\_Enhanced

Surface Type: PCC

Rank: P

Section Area (sf): 119,611.00

Length (ft): 3,389.00

Width (ft): 35.00

From: T07MU-01

To: T08MU-01

Slabs: 820

Section Comments:

Slab Length (ft): 12.50

Slab Width (ft): 11.67

Joint Length (ft): 16,365.57

Last Insp Date: 11/8/2023

Inspection Comments:

PCI: 81

Total Samples: 39

Surveyed: 8

### Sample Number: 02

Sample Type: R

Sample Comments:

Sample PCI: 88

Sample Area (Slabs): 21.00

65 JT SEAL DMG

H

21.00 Slabs

### Sample Number: 06

Sample Type: R

Sample Comments:

Sample PCI: 88

Sample Area (Slabs): 21.00

65 JT SEAL DMG

H

21.00 Slabs

### Sample Number: 11

Sample Type: R

Sample Comments:

Sample PCI: 88

Sample Area (Slabs): 21.00

65 JT SEAL DMG

H

21.00 Slabs

### Sample Number: 16

Sample Type: R

Sample Comments:

Sample PCI: 88

Sample Area (Slabs): 21.00

65 JT SEAL DMG

H

21.00 Slabs

### Sample Number: 24

Sample Type: R

Sample Comments:

Sample PCI: 88

Sample Area (Slabs): 21.00

65 JT SEAL DMG

H

21.00 Slabs

### Sample Number: 28

Sample Type: R

Sample Comments:

Sample PCI: 56

Sample Area (Slabs): 21.00

63 LINEAR CR

L

2.00 Slabs

63 LINEAR CR

M

6.00 Slabs

65 JT SEAL DMG

H

21.00 Slabs



# RE-INSPECTION REPORT MUSCATINE MUNICIPAL AIRPORT

Pavement Database: IA 2023

Generate Date: 4/16/2024

Network ID: MUT

Page 22

---

## Sample Number: 31

Sample Type: R

Sample Comments:

Sample PCI: 67

Sample Area (Slabs): 21.00

63 LINEAR CR

M

4.00 Slabs

65 JT SEAL DMG

H

21.00 Slabs

---

## Sample Number: 38

Sample Type: R

Sample Comments:

Sample PCI: 84

Sample Area (Slabs): 21.00

65 JT SEAL DMG

H

21.00 Slabs

74 JOINT SPALL

M

1.00 Slabs

# RE-INSPECTION REPORT MUSCATINE MUNICIPAL AIRPORT

Pavement Database: IA 2023

Generate Date: 4/16/2024

Network ID: MUT

Page 23

## Branch - Section ID: TBMU - 003

Branch Name: TAXIWAY B

Use: TAXIWAY

LCD: 10/30/1999

PCI Family: IowaPCCTW\_SE\_Enhanced

Surface Type: PCC

Rank: P

Section Area (sf): 7,683.00

Length (ft): 220.00

Width (ft): 35.00

From: SEE MAP

To: SEE MAP

Slabs: 54

Section Comments:

Slab Length (ft): 11.40

Slab Width (ft): 12.50

Joint Length (ft): 1,034.15

Last Insp Date: 11/8/2023

Inspection Comments:

PCI: 86

Total Samples: 3

Surveyed: 3

### Sample Number: 01

Sample Type: R

Sample Comments:

Sample PCI: 84

Sample Area (Slabs): 21.00

65 JT SEAL DMG

H

21.00 Slabs

71 FAULTING

L

1.00 Slabs

### Sample Number: 02

Sample Type: R

Sample Comments:

Sample PCI: 88

Sample Area (Slabs): 18.00

65 JT SEAL DMG

H

18.00 Slabs

### Sample Number: 03

Sample Type: R

Sample Comments:

Sample PCI: 88

Sample Area (Slabs): 15.00

65 JT SEAL DMG

H

15.00 Slabs

# RE-INSPECTION REPORT MUSCATINE MUNICIPAL AIRPORT

Pavement Database: IA 2023

Generate Date: 4/16/2024

Network ID: MUT

Page 24

## Branch - Section ID: TBMU - 004

Branch Name: TAXIWAY B

Use: TAXIWAY

LCD: 6/2/2015

PCI Family: IowaPCCTW\_SE\_Enhanced

Surface Type: PCC

Rank: P

Section Area (sf): 11,638.00

Length (ft): 206.00

Width (ft): 40.00

From: SEE MAP

To: SEE MAP

Slabs: 133

Section Comments:

Slab Length (ft): 10.00

Slab Width (ft): 8.75

Joint Length (ft): 2,146.41

Last Insp Date: 11/8/2023

Inspection Comments:

PCI: 87

Total Samples: 6

Surveyed: 4

### Sample Number: 01

Sample Type: R

Sample Comments:

Sample PCI: 88

Sample Area (Slabs): 27.00

65 JT SEAL DMG

H

27.00 Slabs

### Sample Number: 03

Sample Type: R

Sample Comments:

Sample PCI: 88

Sample Area (Slabs): 18.00

65 JT SEAL DMG

H

18.00 Slabs

### Sample Number: 05

Sample Type: R

Sample Comments:

Sample PCI: 88

Sample Area (Slabs): 24.00

65 JT SEAL DMG

H

24.00 Slabs

### Sample Number: 06

Sample Type: R

Sample Comments:

Sample PCI: 83

Sample Area (Slabs): 18.00

65 JT SEAL DMG

H

18.00 Slabs

71 FAULTING

L

1.00 Slabs

# RE-INSPECTION REPORT MUSCATINE MUNICIPAL AIRPORT

Pavement Database: IA 2023

Generate Date: 4/16/2024

Network ID: MUT

Page 25

## Branch - Section ID: TBMU - 005

Branch Name: TAXIWAY B

Use: TAXIWAY

LCD: 6/2/2015

PCI Family: IowaPCCTW\_SE\_Enhanced

Surface Type: PCC

Rank: P

Section Area (sf): 12,045.78

Length (ft): 210.00

Width (ft): 50.00

From: RUNWAY 06/24

To: SEE MAP

Slabs: 138

Section Comments:

Slab Length (ft): 10.00

Slab Width (ft): 8.75

Joint Length (ft): 2,282.96

Last Insp Date: 11/8/2023

Inspection Comments:

PCI: 86

Total Samples: 6

Surveyed: 4

### Sample Number: 01

Sample Type: R

Sample Comments:

Sample PCI: 88

Sample Area (Slabs): 24.00

65 JT SEAL DMG

H

24.00 Slabs

### Sample Number: 03

Sample Type: R

Sample Comments:

Sample PCI: 88

Sample Area (Slabs): 24.00

65 JT SEAL DMG

H

24.00 Slabs

### Sample Number: 04

Sample Type: R

Sample Comments:

Sample PCI: 83

Sample Area (Slabs): 26.00

65 JT SEAL DMG

H

26.00 Slabs

71 FAULTING

L

2.00 Slabs

### Sample Number: 05

Sample Type: R

Sample Comments:

Sample PCI: 84

Sample Area (Slabs): 23.00

65 JT SEAL DMG

H

23.00 Slabs

71 FAULTING

L

1.00 Slabs



# RE-INSPECTION REPORT MUSCATINE MUNICIPAL AIRPORT

Pavement Database: IA 2023

Generate Date: 4/16/2024

Network ID: MUT

Page 26

## Branch - Section ID: TBMU - 006

Branch Name: TAXIWAY B

Use: TAXIWAY

LCD: 7/3/2021

PCI Family: IowaPCCTW\_SE\_Enhanced

Surface Type: PCC

Rank: P

Section Area (sf): 14,056.00

Length (ft): 158.00

Width (ft): 85.00

From: SEE MAP

To: SEE MAP

Slabs: 161

Section Comments:

Slab Length (ft): 10.00

Slab Width (ft): 8.75

Joint Length (ft): 2,757.67

Last Insp Date: 11/8/2023

Inspection Comments:

PCI: 100

Total Samples: 10

Surveyed: 5

### Sample Number: 01

Sample Type: R

Sample Comments:

Sample PCI: 100

Sample Area (Slabs): 20.00

NO DISTRESS

### Sample Number: 02

Sample Type: R

Sample Comments:

Sample PCI: 100

Sample Area (Slabs): 21.00

NO DISTRESS

### Sample Number: 03

Sample Type: R

Sample Comments:

Sample PCI: 100

Sample Area (Slabs): 18.00

NO DISTRESS

### Sample Number: 04

Sample Type: R

Sample Comments:

Sample PCI: 100

Sample Area (Slabs): 21.00

NO DISTRESS

### Sample Number: 07

Sample Type: R

Sample Comments:

Sample PCI: 100

Sample Area (Slabs): 18.00

NO DISTRESS

# RE-INSPECTION REPORT MUSCATINE MUNICIPAL AIRPORT

Pavement Database: IA 2023

Generate Date: 4/16/2024

Network ID: MUT

Page 27

## Branch - Section ID: TCMU - 001

Branch Name: TAXIWAY C

Use: TAXIWAY

LCD: 7/3/2021

PCI Family: IowaPCCTW\_SE\_Enhanced

Surface Type: PCC

Rank: P

Section Area (sf): 23,112.00

Length (ft): 282.00

Width (ft): 50.00

From: SEE MAP

To: SEE MAP

Slabs: 264

Section Comments:

Slab Length (ft): 10.00

Slab Width (ft): 8.75

Joint Length (ft): 4,408.37

Last Insp Date: 11/8/2023

Inspection Comments:

PCI: 100

Total Samples: 16

Surveyed: 7

### Sample Number: 03

Sample Type: R

Sample Comments:

Sample PCI: 100

Sample Area (Slabs): 15.00

NO DISTRESS

### Sample Number: 04

Sample Type: R

Sample Comments:

Sample PCI: 98

Sample Area (Slabs): 18.00

74 JOINT SPALL

L

1.00 Slabs

### Sample Number: 05

Sample Type: R

Sample Comments:

Sample PCI: 100

Sample Area (Slabs): 23.00

NO DISTRESS

### Sample Number: 09

Sample Type: R

Sample Comments:

Sample PCI: 100

Sample Area (Slabs): 21.00

NO DISTRESS

### Sample Number: 12

Sample Type: R

Sample Comments:

Sample PCI: 100

Sample Area (Slabs): 18.00

NO DISTRESS

### Sample Number: 13

Sample Type: R

Sample Comments:

Sample PCI: 100

Sample Area (Slabs): 21.00

NO DISTRESS

# RE-INSPECTION REPORT MUSCATINE MUNICIPAL AIRPORT

Pavement Database: IA 2023

Generate Date: 4/16/2024

Network ID: MUT

Page 28

---

## Sample Number: 16

Sample Type: R

Sample Comments:

Sample PCI: 100

Sample Area (Slabs): 20.00

NO DISTRESS

# RE-INSPECTION REPORT MUSCATINE MUNICIPAL AIRPORT

Pavement Database: IA 2023

Generate Date: 4/16/2024

Network ID: MUT

Page 29

## Branch - Section ID: TH01MU - 001

Branch Name: T-HANGAR 01

Use: T-HANGAR

LCD: 1/1/1991

PCI Family: IowaAsphaltTH\_Southern

Surface Type: AC

Rank: P

Section Area (sf): 10,898.00

Length (ft): 380.00

Width (ft): 25.00

From: SEE MAP

To: SEE MAP

Slabs:

Section Comments:

Slab Length (ft):

Slab Width (ft):

Joint Length (ft):

Last Insp Date: 11/8/2023

Inspection Comments:

PCI: 3

Total Samples: 2

Surveyed: 2

### Sample Number: 01

Sample Type: R

Sample Comments:

Sample PCI: 2

Sample Area (SF): 6,254.00

41 ALLIGATOR CR	M	2,502.00 SF
43 BLOCK CR	M	3,752.00 SF
52 RAVELING	H	6,254.00 SF
53 RUTTING	L	200.00 SF

### Sample Number: 02

Sample Type: R

Sample Comments:

Sample PCI: 4

Sample Area (SF): 4,644.00

41 ALLIGATOR CR	M	1,393.00 SF
43 BLOCK CR	M	3,251.00 SF
52 RAVELING	H	4,644.00 SF
53 RUTTING	L	200.00 SF

# RE-INSPECTION REPORT MUSCATINE MUNICIPAL AIRPORT

Pavement Database: IA 2023

Generate Date: 4/16/2024

Network ID: MUT

Page 30

## Branch - Section ID: TH01MU - 002

Branch Name: T-HANGAR 01

Use: T-HANGAR

LCD: 1/1/2000

PCI Family: IowaAsphaltTH\_Southern

Surface Type: AAC

Rank: P

Section Area (sf): 9,904.00

Length (ft): 395.00

Width (ft): 25.00

From: SEE MAP

To: SEE MAP

Slabs:

Section Comments:

Slab Length (ft):

Slab Width (ft):

Joint Length (ft):

Last Insp Date: 11/8/2023

Inspection Comments:

PCI: 34

Total Samples: 3

Surveyed: 3

### Sample Number: 01

Sample Type: R

Sample Comments:

Sample PCI: 53

Sample Area (SF): 3,029.00

41 ALLIGATOR CR	M	28.00 SF	
48 L & T CR	L	85.00 Ft	LU
48 L & T CR	M	120.00 Ft	W
57 WEATHERING	M	3,029.00 SF	

### Sample Number: 02

Sample Type: R

Sample Comments:

Sample PCI: 23

Sample Area (SF): 3,750.00

41 ALLIGATOR CR	M	400.00 SF	
48 L & T CR	L	150.00 Ft	LU
48 L & T CR	M	315.00 Ft	W
53 RUTTING	L	20.00 SF	
57 WEATHERING	M	3,750.00 SF	

### Sample Number: 03

Sample Type: R

Sample Comments:

Sample PCI: 29

Sample Area (SF): 3,125.00

41 ALLIGATOR CR	M	350.00 SF	
48 L & T CR	L	85.00 Ft	LU
48 L & T CR	M	250.00 Ft	W
57 WEATHERING	M	3,125.00 SF	



# RE-INSPECTION REPORT MUSCATINE MUNICIPAL AIRPORT

Pavement Database: IA 2023

Generate Date: 4/16/2024

Network ID: MUT

Page 31

## Branch - Section ID: TH01MU - 003

Branch Name: T-HANGAR 01

Use: T-HANGAR

LCD: 6/3/2017

PCI Family: IowaPCCTH\_SE

Surface Type: PCC

Rank: P

Section Area (sf): 26,178.00

Length (ft): 670.00

Width (ft): 35.00

From: TH01MU-01

To: SEE MAP

Slabs: 227

Section Comments:

Slab Length (ft): 10.50

Slab Width (ft): 11.00

Joint Length (ft): 4,085.95

Last Insp Date: 11/8/2023

Inspection Comments:

PCI: 84

Total Samples: 11

Surveyed: 6

### Sample Number: 01

Sample Type: R

Sample Comments:

Sample PCI: 81

Sample Area (Slabs): 12.00

65 JT SEAL DMG

H

12.00 Slabs

74 JOINT SPALL

M

2.00 Slabs

### Sample Number: 02

Sample Type: R

Sample Comments:

Sample PCI: 88

Sample Area (Slabs): 18.00

65 JT SEAL DMG

H

18.00 Slabs

### Sample Number: 04

Sample Type: R

Sample Comments:

Sample PCI: 88

Sample Area (Slabs): 24.00

65 JT SEAL DMG

H

24.00 Slabs

### Sample Number: 06

Sample Type: R

Sample Comments:

Sample PCI: 88

Sample Area (Slabs): 25.00

65 JT SEAL DMG

H

25.00 Slabs

### Sample Number: 08

Sample Type: R

Sample Comments:

Sample PCI: 88

Sample Area (Slabs): 21.00

65 JT SEAL DMG

H

21.00 Slabs

### Sample Number: 10

Sample Type: R

Sample Comments:

Sample PCI: 71

Sample Area (Slabs): 21.00

63 LINEAR CR

M

3.00 Slabs

65 JT SEAL DMG

H

21.00 Slabs

# RE-INSPECTION REPORT MUSCATINE MUNICIPAL AIRPORT

Pavement Database: IA 2023

Generate Date: 4/16/2024

Network ID: MUT

Page 32

## Branch - Section ID: TH01MU - 004

Branch Name: T-HANGAR 01

Use: T-HANGAR

LCD: 6/3/2019  
 Surface Type: PCC  
 Rank: P  
 Section Area (sf): 13,604.00  
 Length (ft): 242.00  
 Width (ft): 55.00  
 From: TH01MU-03  
 To: SEE MAP

PCI Family: IowaPCCTH\_SE

Slabs: 124  
 Slab Length (ft): 11.00  
 Slab Width (ft): 10.00  
 Joint Length (ft): 2,293.57

Section Comments:

Last Insp Date: 11/8/2023  
 PCI: 87  
 Total Samples: 6  
 Surveyed: 4

Inspection Comments:

### Sample Number: 01

Sample Type: R  
 Sample PCI: 93  
 Sample Area (Slabs): 21.00

Sample Comments:

65 JT SEAL DMG	M	21.00 Slabs
----------------	---	-------------

### Sample Number: 03

Sample Type: R  
 Sample PCI: 86  
 Sample Area (Slabs): 26.00

Sample Comments:

65 JT SEAL DMG	M	26.00 Slabs
71 FAULTING	L	1.00 Slabs
73 SHRINKAGE CR	N	1.00 Slabs
74 JOINT SPALL	L	1.00 Slabs
75 CORNER SPALL	L	1.00 Slabs

### Sample Number: 04

Sample Type: R  
 Sample PCI: 84  
 Sample Area (Slabs): 20.00

Sample Comments:

63 LINEAR CR	L	1.00 Slabs
65 JT SEAL DMG	M	20.00 Slabs
74 JOINT SPALL	M	1.00 Slabs

### Sample Number: 05

Sample Type: R  
 Sample PCI: 87  
 Sample Area (Slabs): 20.00

Sample Comments:

65 JT SEAL DMG	M	20.00 Slabs
71 FAULTING	L	2.00 Slabs

# RE-INSPECTION REPORT MUSCATINE MUNICIPAL AIRPORT

Pavement Database: IA 2023

Generate Date: 4/16/2024

Network ID: MUT

Page 33

## Branch - Section ID: TH01MU - 005

Branch Name: T-HANGAR 01

Use: T-HANGAR

LCD: 7/3/2022

PCI Family: IowaPCCTH\_SE

Surface Type: PCC

Rank: P

Section Area (sf): 13,004.00

Length (ft): 280.00

Width (ft): 50.00

From: SEE MAP

To: SEE MAP

Slabs: 93

Section Comments: Slab Size Varies

Slab Length (ft): 11.90

Slab Width (ft): 11.70

Joint Length (ft): 1,897.70

Last Insp Date: 11/8/2023

Inspection Comments:

PCI: 100

Total Samples: 6

Surveyed: 4

### Sample Number: 02

Sample Type: R

Sample Comments:

Sample PCI: 100

Sample Area (Slabs): 20.00

NO DISTRESS

### Sample Number: 03

Sample Type: R

Sample Comments:

Sample PCI: 100

Sample Area (Slabs): 20.00

NO DISTRESS

### Sample Number: 04

Sample Type: R

Sample Comments:

Sample PCI: 100

Sample Area (Slabs): 20.00

NO DISTRESS

### Sample Number: 05

Sample Type: R

Sample Comments:

Sample PCI: 100

Sample Area (Slabs): 20.00

NO DISTRESS

## **APPENDIX D**

# **WORK HISTORY REPORT**

# WORK HISTORY

Pavement Database: IA 2023

Generate Date: 4/30/2024

Network ID: MUT

Page 1

## Network: MUSCATINE MUNICIPAL AIRPORT

### Branch - Section ID:           A01MU - 001

LCD: 9/2/1991  
Use: APRON  
Rank: P  
Surface: PCC

Length (ft):           326.50  
Width (ft):           519.00  
True Area (sf):       177,979.30

Work Date	Work Code	Work Description	Cost	Thickness (in)	Major MR	Comments
06-01-2012	PA-PP	Patching - PCC Partial Depth	\$0.00	0.00	False	-
06-01-2012	JS-LC	Joint Seal (Localized)	\$0.00	0.00	False	-
06-01-2012	PA-PF	Patching - PCC Full Depth	\$0.00	0.00	False	-
06-01-2008	JS-LC	Joint Seal (Localized)	\$0.00	0.00	False	-
09-02-1991	NC-PC	New Construction - PCC	\$0.00	7.00	True	7" P-501 PCC
09-01-1991	BA-AG	Base Course - Aggregate	\$0.00	6.00	False	6" P-209/P219 CRUSHED AGGREGATE BASE
06-01-1945	NC-AC	New Construction - AC	\$0.00	0.00	True	-

### Branch - Section ID:           A01MU - 002

LCD: 4/1/2016  
Use: APRON  
Rank: P  
Surface: PCC

Length (ft):           150.00  
Width (ft):           125.00  
True Area (sf):       12,444.41

Work Date	Work Code	Work Description	Cost	Thickness (in)	Major MR	Comments
04-01-2016	CR-PC	Complete Reconstruction - PCC	\$0.00	0.00	True	Estimated Date
09-02-1991	NC-PC	New Construction - PCC	\$0.00	7.00	True	7" P-501 PCC
09-01-1991	BA-AG	Base Course - Aggregate	\$0.00	6.00	False	6" P-209/P219 CRUSHED AGGREGATE BASE
06-01-1945	NC-AC	New Construction - AC	\$0.00	0.00	True	-

### Branch - Section ID:           A01MU - 003

LCD: 7/1/1991  
Use: APRON  
Rank: P  
Surface: PCC

Length (ft):           100.00  
Width (ft):           50.00  
True Area (sf):       6,299.00

Work Date	Work Code	Work Description	Cost	Thickness (in)	Major MR	Comments
06-01-2012	PA-PF	Patching - PCC Full Depth	\$0.00	0.00	False	-
06-01-2012	CS-PC	Crack Sealing - PCC	\$0.00	0.00	False	-
06-01-2012	PA-PP	Patching - PCC Partial Depth	\$0.00	0.00	False	-
06-01-2012	JS-LC	Joint Seal (Localized)	\$0.00	0.00	False	-
06-01-2008	JS-LC	Joint Seal (Localized)	\$0.00	0.00	False	-
07-01-1991	NC-PC	New Construction - PCC	\$0.00	7.00	True	7" P-501 PCC
07-01-1991	BA-AG	Base Course - Aggregate	\$0.00	6.00	False	6" P-209 CRUSHED AGGREGATE BASE



# WORK HISTORY

Pavement Database: IA 2023

Generate Date: 4/30/2024

Network ID: MUT

Page 2

## Branch - Section ID: R06MU - 001

LCD: 6/2/2015  
 Use: RUNWAY  
 Rank: P  
 Surface: PCC

Length (ft): 5,500.00  
 Width (ft): 100.00  
 True Area (sf): 549,988.84

Work Date	Work Code	Work Description	Cost	Thickness (in)	Major MR	Comments
06-02-2015	CR-PC	Complete Reconstruction - PCC	\$0.00	8.00	True	8" P501 PCC SURFACE
06-01-2015	BA-AG	Base Course - Aggregate	\$0.00	6.00	False	6" P209/P219 CRUSHED AGGREGATE BASE
06-01-2012	PA-PP	Patching - PCC Partial Depth	\$0.00	0.00	False	-
06-01-2012	CS-PC	Crack Sealing - PCC	\$0.00	0.00	False	-
06-01-2012	JS-LC	Joint Seal (Localized)	\$0.00	0.00	False	-
09-01-1991	NC-PC	New Construction - PCC	\$0.00	0.00	True	-

## Branch - Section ID: R12MU - 001

LCD: 10/30/1999  
 Use: RUNWAY  
 Rank: S  
 Surface: PCC

Length (ft): 4,000.00  
 Width (ft): 75.00  
 True Area (sf): 300,000.01

Work Date	Work Code	Work Description	Cost	Thickness (in)	Major MR	Comments
06-01-2012	PA-PP	Patching - PCC Partial Depth	\$0.00	0.00	False	-
06-01-2012	JS-LC	Joint Seal (Localized)	\$0.00	0.00	False	-
06-01-2008	JS-LC	Joint Seal (Localized)	\$0.00	0.00	False	-
10-30-1999	NC-PC	New Construction - PCC	\$0.00	6.00	True	6" P-501 PCC SURFACE
10-29-1999	BA-AG	Base Course - Aggregate	\$0.00	6.00	False	6" P209 CRUSHED AGGREGATE BASE

## Branch - Section ID: TA1MU - 001

LCD: 7/3/2021  
 Use: TAXIWAY  
 Rank: P  
 Surface: PCC

Length (ft): 119.00  
 Width (ft): 80.00  
 True Area (sf): 13,758.00

Work Date	Work Code	Work Description	Cost	Thickness (in)	Major MR	Comments
07-03-2021	CR-PC	Complete Reconstruction - PCC	\$0.00	6.00	True	6" P-501 PCC CONCRETE PAVEMENT
07-02-2021	BA-AG	Base Course - Aggregate	\$0.00	6.00	False	6" P-209/P-219 CRUSHED AGGREGATE BASE COURSE W/ SEPERATION GEOTEXTILE
07-01-2021	SG-CO	Subgrade - Compacted	\$0.00	12.00	False	12" P-152 SUBGRADE PREPARATION
06-01-2012	JS-LC	Joint Seal (Localized)	\$0.00	0.00	False	-
06-01-2012	PA-PP	Patching - PCC Partial Depth	\$0.00	0.00	False	-
06-01-2008	JS-LC	Joint Seal (Localized)	\$0.00	0.00	False	-
07-01-1991	NC-PC	New Construction - PCC	\$0.00	7.00	True	7" P-501
07-01-1991	BA-AG	Base Course - Aggregate	\$0.00	6.00	False	6" P-209

# WORK HISTORY

Pavement Database: IA 2023

Generate Date: 4/30/2024

Network ID: MUT

Page 3

## Branch - Section ID: TA1MU - 002

LCD: 6/2/2015  
 Use: TAXIWAY  
 Rank: P  
 Surface: PCC

Length (ft): 210.00  
 Width (ft): 50.00  
 True Area (sf): 12,153.00

Work Date	Work Code	Work Description	Cost	Thickness (in)	Major MR	Comments
06-02-2015	CR-PC	Complete Reconstruction - PCC	\$0.00	8.00	True	PCC Pavement
06-01-2015	BA-AG	Base Course - Aggregate	\$0.00	6.00	False	Rock Base
06-01-2012	PA-PP	Patching - PCC Partial Depth	\$0.00	0.00	False	-
06-01-2012	JS-LC	Joint Seal (Localized)	\$0.00	0.00	False	-
06-01-2008	JS-LC	Joint Seal (Localized)	\$0.00	0.00	False	-
07-01-1991	BA-AG	Base Course - Aggregate	\$0.00	6.00	False	6" P-209
07-01-1991	NC-PC	New Construction - PCC	\$0.00	7.00	True	7" P-501

## Branch - Section ID: TAMU - 001

LCD: 6/2/2015  
 Use: TAXIWAY  
 Rank: P  
 Surface: PCC

Length (ft): 210.00  
 Width (ft): 43.00  
 True Area (sf): 9,803.00

Work Date	Work Code	Work Description	Cost	Thickness (in)	Major MR	Comments
06-02-2015	CR-PC	Complete Reconstruction - PCC	\$0.00	8.00	True	PCC Pavement
06-01-2015	BA-AG	Base Course - Aggregate	\$0.00	6.00	False	Rock Base
06-01-2012	PA-PP	Patching - PCC Partial Depth	\$0.00	0.00	False	-
06-01-2012	JS-LC	Joint Seal (Localized)	\$0.00	0.00	False	-
06-01-2008	JS-LC	Joint Seal (Localized)	\$0.00	0.00	False	-
09-01-1991	BA-AG	Base Course - Aggregate	\$0.00	6.00	False	6" P-209
09-01-1991	NC-PC	New Construction - PCC	\$0.00	7.00	True	7" P-501

## Branch - Section ID: TAMU - 002

LCD: 7/3/2021  
 Use: TAXIWAY  
 Rank: P  
 Surface: PCC

Length (ft): 120.00  
 Width (ft): 60.00  
 True Area (sf): 8,903.00

Work Date	Work Code	Work Description	Cost	Thickness (in)	Major MR	Comments
07-03-2021	CR-PC	Complete Reconstruction - PCC	\$0.00	6.00	True	6" P-501 PCC CONCRETE PAVEMENT
07-02-2021	BA-AG	Base Course - Aggregate	\$0.00	6.00	False	6" P-209/P-219 CRUSHED AGGREGATE BASE COURSE W/ SEPERATION GEOTEXTILE
07-01-2021	SG-CO	Subgrade - Compacted	\$0.00	12.00	False	12" P-152 SUBGRADE PREPARATION
06-01-2012	JS-LC	Joint Seal (Localized)	\$0.00	0.00	False	-
06-01-2012	PA-PP	Patching - PCC Partial Depth	\$0.00	0.00	False	-
06-01-2008	JS-LC	Joint Seal (Localized)	\$0.00	0.00	False	-
09-01-1991	BA-AG	Base Course - Aggregate	\$0.00	6.00	False	6" P-209
09-01-1991	NC-PC	New Construction - PCC	\$0.00	7.00	True	7" P-501

# WORK HISTORY

Pavement Database: IA 2023

Generate Date: 4/30/2024

Network ID: MUT

Page 4

## Branch - Section ID: TAMU - 003

LCD: 7/3/2021  
 Use: TAXIWAY  
 Rank: P  
 Surface: PCC

Length (ft): 5,458.00  
 Width (ft): 35.00  
 True Area (sf): 191,022.00

Work Date	Work Code	Work Description	Cost	Thickness (in)	Major MR	Comments
07-03-2021	CR-PC	Complete Reconstruction - PCC	\$0.00	6.00	True	6" P-501 PCC CONCRETE PAVEMENT
07-02-2021	BA-AG	Base Course - Aggregate	\$0.00	6.00	False	6" P-209/P-219 CRUSHED AGGREGATE BASE COURSE W/ SEPERATION GEOTEXTILE
07-01-2021	SG-CO	Subgrade - Compacted	\$0.00	12.00	False	12" P-152 SUBGRADE PREPARATION
06-01-2012	JS-LC	Joint Seal (Localized)	\$0.00	0.00	False	-
06-01-2012	PA-PP	Patching - PCC Partial Depth	\$0.00	0.00	False	-
06-01-2012	CS-PC	Crack Sealing - PCC	\$0.00	0.00	False	-
07-01-1991	BA-AG	Base Course - Aggregate	\$0.00	6.00	False	6" P-209
07-01-1991	NC-PC	New Construction - PCC	\$0.00	7.00	True	7" P-501

## Branch - Section ID: TAMU - 004

LCD: 7/3/2021  
 Use: TAXIWAY  
 Rank: P  
 Surface: PCC

Length (ft): 117.00  
 Width (ft): 37.50  
 True Area (sf): 8,168.00

Work Date	Work Code	Work Description	Cost	Thickness (in)	Major MR	Comments
07-03-2021	CR-PC	Complete Reconstruction - PCC	\$0.00	6.00	True	6" P-501 PCC CONCRETE PAVEMENT
07-02-2021	BA-AG	Base Course - Aggregate	\$0.00	6.00	False	6" P-209/P-219 CRUSHED AGGREGATE BASE COURSE W/ SEPERATION GEOTEXTILE
07-01-2021	SG-CO	Subgrade - Compacted	\$0.00	12.00	False	12" P-152 SUBGRADE PREPARATION
06-01-2012	CS-PC	Crack Sealing - PCC	\$0.00	0.00	False	-
06-01-2012	PA-PP	Patching - PCC Partial Depth	\$0.00	0.00	False	-
06-01-2012	JS-LC	Joint Seal (Localized)	\$0.00	0.00	False	-
07-01-1991	BA-AG	Base Course - Aggregate	\$0.00	6.00	False	6" P-209
07-01-1991	NC-PC	New Construction - PCC	\$0.00	7.00	True	7" P-501

## Branch - Section ID: TAMU - 005

LCD: 6/2/2015  
 Use: TAXIWAY  
 Rank: P  
 Surface: PCC

Length (ft): 210.00  
 Width (ft): 40.00  
 True Area (sf): 9,798.00

Work Date	Work Code	Work Description	Cost	Thickness (in)	Major MR	Comments
06-02-2015	CR-PC	Complete Reconstruction - PCC	\$0.00	8.00	True	PCC Pavement
06-01-2015	BA-AG	Base Course - Aggregate	\$0.00	6.00	False	Rock Base
06-01-2012	JS-LC	Joint Seal (Localized)	\$0.00	0.00	False	-
06-01-2012	PA-PP	Patching - PCC Partial Depth	\$0.00	0.00	False	-
06-01-2012	CS-PC	Crack Sealing - PCC	\$0.00	0.00	False	-
07-01-1991	BA-AG	Base Course - Aggregate	\$0.00	6.00	False	6" P-209
07-01-1991	NC-PC	New Construction - PCC	\$0.00	7.00	True	7" P-501

# WORK HISTORY

Pavement Database: IA 2023

Generate Date: 4/30/2024

Network ID: MUT

Page 5

## Branch - Section ID: TB1MU - 001

LCD: 10/30/1999  
 Use: TAXIWAY  
 Rank: P  
 Surface: PCC

Length (ft): 510.00  
 Width (ft): 37.50  
 True Area (sf): 21,343.00

Work Date	Work Code	Work Description	Cost	Thickness (in)	Major MR	Comments
06-01-2016	SL-PC	Slab Replacement - PCC	\$0.00	0.00	False	EST DATE
06-01-2012	JS-LC	Joint Seal (Localized)	\$0.00	0.00	False	-
06-01-2008	JS-LC	Joint Seal (Localized)	\$0.00	0.00	False	-
10-30-1999	NC-IN	New Construction - Initial	\$0.00	0.00	True	-

## Branch - Section ID: TB2MU - 001

LCD: 7/2/2007  
 Use: TAXIWAY  
 Rank: P  
 Surface: PCC

Length (ft): 250.00  
 Width (ft): 35.00  
 True Area (sf): 12,059.00

Work Date	Work Code	Work Description	Cost	Thickness (in)	Major MR	Comments
06-01-2012	JS-LC	Joint Seal (Localized)	\$0.00	0.00	False	-
06-01-2012	PA-PP	Patching - PCC Partial Depth	\$0.00	0.00	False	-
06-01-2012	CS-PC	Crack Sealing - PCC	\$0.00	0.00	False	-
07-02-2007	NC-IN	New Construction - Initial	\$0.00	6.00	True	6" PCC
07-01-2007	BA-AG	Base Course - Aggregate	\$0.00	6.00	False	6" ROCK

## Branch - Section ID: TBMU - 001

LCD: 6/1/2000  
 Use: TAXIWAY  
 Rank: P  
 Surface: PCC

Length (ft): 450.00  
 Width (ft): 37.50  
 True Area (sf): 20,781.00

Work Date	Work Code	Work Description	Cost	Thickness (in)	Major MR	Comments
06-01-2012	PA-PP	Patching - PCC Partial Depth	\$0.00	0.00	False	-
06-01-2012	JS-LC	Joint Seal (Localized)	\$0.00	0.00	False	-
06-01-2000	NC-IN	New Construction - Initial	\$0.00	6.00	True	PCC

## Branch - Section ID: TBMU - 002

LCD: 7/2/2007  
 Use: TAXIWAY  
 Rank: P  
 Surface: PCC

Length (ft): 3,389.00  
 Width (ft): 35.00  
 True Area (sf): 119,611.00

Work Date	Work Code	Work Description	Cost	Thickness (in)	Major MR	Comments
06-01-2012	PA-PP	Patching - PCC Partial Depth	\$0.00	0.00	False	-
06-01-2012	JS-LC	Joint Seal (Localized)	\$0.00	0.00	False	-
06-01-2012	CS-PC	Crack Sealing - PCC	\$0.00	0.00	False	-
07-02-2007	NC-IN	New Construction - Initial	\$0.00	6.00	True	6" PCC
07-01-2007	BA-AG	Base Course - Aggregate	\$0.00	6.00	False	6" ROCK

# WORK HISTORY

Pavement Database: IA 2023

Generate Date: 4/30/2024

Network ID: MUT

Page 6

## Branch - Section ID: TBMU - 003

LCD: 10/30/1999  
 Use: TAXIWAY  
 Rank: P  
 Surface: PCC

Length (ft): 220.00  
 Width (ft): 35.00  
 True Area (sf): 7,683.00

Work Date	Work Code	Work Description	Cost	Thickness (in)	Major MR	Comments
06-01-2012	JS-LC	Joint Seal (Localized)	\$0.00	0.00	False	-
06-01-2008	JS-LC	Joint Seal (Localized)	\$0.00	0.00	False	-
10-30-1999	NC-IN	New Construction - Initial	\$0.00	0.00	True	-

## Branch - Section ID: TBMU - 004

LCD: 6/2/2015  
 Use: TAXIWAY  
 Rank: P  
 Surface: PCC

Length (ft): 206.00  
 Width (ft): 40.00  
 True Area (sf): 11,638.00

Work Date	Work Code	Work Description	Cost	Thickness (in)	Major MR	Comments
06-02-2015	CR-PC	Complete Reconstruction - PCC	\$0.00	6.00	True	6" P501 PCC SURFACE
06-01-2015	BA-AG	Base Course - Aggregate	\$0.00	6.00	False	6" P209/P219 CRUSHED AGGREGATE BASE
06-01-2012	JS-LC	Joint Seal (Localized)	\$0.00	0.00	False	-
06-01-2008	JS-LC	Joint Seal (Localized)	\$0.00	0.00	False	-
10-30-1999	NC-IN	New Construction - Initial	\$0.00	0.00	True	-

## Branch - Section ID: TBMU - 005

LCD: 6/2/2015  
 Use: TAXIWAY  
 Rank: P  
 Surface: PCC

Length (ft): 210.00  
 Width (ft): 50.00  
 True Area (sf): 12,045.78

Work Date	Work Code	Work Description	Cost	Thickness (in)	Major MR	Comments
06-02-2015	CR-PC	Complete Reconstruction - PCC	\$0.00	8.00	True	PCC Pavement
06-01-2015	BA-AG	Base Course - Aggregate	\$0.00	6.00	False	Rock Base
06-01-2012	PA-PP	Patching - PCC Partial Depth	\$0.00	0.00	False	-
06-01-2012	CS-PC	Crack Sealing - PCC	\$0.00	0.00	False	-
06-01-2012	PA-PF	Patching - PCC Full Depth	\$0.00	0.00	False	-
06-01-2012	JS-LC	Joint Seal (Localized)	\$0.00	0.00	False	-
06-01-2008	JS-LC	Joint Seal (Localized)	\$0.00	0.00	False	-
07-01-1991	BA-AG	Base Course - Aggregate	\$0.00	6.00	False	6" P-209
07-01-1991	NC-PC	New Construction - PCC	\$0.00	7.00	True	7" P-501



# WORK HISTORY

Pavement Database: IA 2023

Generate Date: 4/30/2024

Network ID: MUT

Page 7

## Branch - Section ID: TBMU - 006

LCD: 7/3/2021  
 Use: TAXIWAY  
 Rank: P  
 Surface: PCC

Length (ft): 158.00  
 Width (ft): 85.00  
 True Area (sf): 14,056.00

Work Date	Work Code	Work Description	Cost	Thickness (in)	Major MR	Comments
07-03-2021	CR-PC	Complete Reconstruction - PCC	\$0.00	6.00	True	6" P-501 PCC CONCRETE PAVEMENT
07-02-2021	BA-AG	Base Course - Aggregate	\$0.00	6.00	False	6" P-209/P-219 CRUSHED AGGREGATE BASE COURSE W/ SEPERATION GEOTEXTILE
07-01-2021	SG-CO	Subgrade - Compacted	\$0.00	12.00	False	12" P-152 SUBGRADE PREPARATION
06-01-2012	CS-PC	Crack Sealing - PCC	\$0.00	0.00	False	-
06-01-2012	PA-PF	Patching - PCC Full Depth	\$0.00	0.00	False	-
06-01-2012	PA-PP	Patching - PCC Partial Depth	\$0.00	0.00	False	-
06-01-2012	JS-LC	Joint Seal (Localized)	\$0.00	0.00	False	-
06-01-2008	JS-LC	Joint Seal (Localized)	\$0.00	0.00	False	-
07-01-1991	BA-AG	Base Course - Aggregate	\$0.00	6.00	False	6" P-209 CRUSHED AGGREGATE BASE
07-01-1991	NC-PC	New Construction - PCC	\$0.00	7.00	True	7" P-501 PCC

## Branch - Section ID: TCMU - 001

LCD: 7/3/2021  
 Use: TAXIWAY  
 Rank: P  
 Surface: PCC

Length (ft): 282.00  
 Width (ft): 50.00  
 True Area (sf): 23,112.00

Work Date	Work Code	Work Description	Cost	Thickness (in)	Major MR	Comments
07-03-2021	NC-PC	New Construction - PCC	\$0.00	6.00	True	6" P-501 PCC CONCRETE PAVEMENT
07-02-2021	BA-AG	Base Course - Aggregate	\$0.00	6.00	False	6" P-209/P-219 CRUSHED AGGREGATE BASE COURSE W/ SEPERATION GEOTEXTILE
07-01-2021	SG-CO	Subgrade - Compacted	\$0.00	12.00	False	12" P-152 SUBGRADE PREPARATION

## Branch - Section ID: TH01MU - 001

LCD: 1/1/1991  
 Use: T-HANGAR  
 Rank: P  
 Surface: AC

Length (ft): 380.00  
 Width (ft): 25.00  
 True Area (sf): 10,898.00

Work Date	Work Code	Work Description	Cost	Thickness (in)	Major MR	Comments
01-01-1991	NC-AC	New Construction - AC	\$0.00	0.00	True	EST; CONSTRUCTED PRIOR TO 1994 PER GOOGLE EARTH

## Branch - Section ID: TH01MU - 002

LCD: 1/1/2000  
 Use: T-HANGAR  
 Rank: P  
 Surface: AAC

Length (ft): 395.00  
 Width (ft): 25.00  
 True Area (sf): 9,904.00

Work Date	Work Code	Work Description	Cost	Thickness (in)	Major MR	Comments
01-01-2000	OL-AS	Overlay - AC Structural	\$0.00	0.00	True	EST USING GOOGLE EARTH
06-01-1991	NC-AC	New Construction - AC	\$0.00	0.00	True	UNKNOWN, CONSTRUCTED PRIOR TO 1994

# WORK HISTORY

Pavement Database: IA 2023

Generate Date: 4/30/2024

Network ID: MUT

Page 8

## Branch - Section ID: TH01MU - 003

LCD: 6/3/2017  
 Use: T-HANGAR  
 Rank: P  
 Surface: PCC

Length (ft): 670.00  
 Width (ft): 35.00  
 True Area (sf): 26,178.00

Work Date	Work Code	Work Description	Cost	Thickness (in)	Major MR	Comments
06-03-2017	NC-PC	New Construction - PCC	\$0.00	6.00	True	6" PCC
06-02-2017	SB-AG	Subbase - Aggregate	\$0.00	6.00	False	6" Granular Subbase
06-01-2017	SG-CO	Subgrade - Compacted	\$0.00	12.00	False	12" Prepared Subgrade

## Branch - Section ID: TH01MU - 004

LCD: 6/3/2019  
 Use: T-HANGAR  
 Rank: P  
 Surface: PCC

Length (ft): 242.00  
 Width (ft): 55.00  
 True Area (sf): 13,604.00

Work Date	Work Code	Work Description	Cost	Thickness (in)	Major MR	Comments
06-03-2019	NC-PC	New Construction - PCC	\$0.00	6.00	True	6" PCC
06-02-2019	SB-AG	Subbase - Aggregate	\$0.00	6.00	False	6" Modified Granular Subbase
06-01-2019	SG-CO	Subgrade - Compacted	\$0.00	12.00	False	12" Compacted Subgrade

## Branch - Section ID: TH01MU - 005

LCD: 7/3/2022  
 Use: T-HANGAR  
 Rank: P  
 Surface: PCC

Length (ft): 280.00  
 Width (ft): 50.00  
 True Area (sf): 13,004.00

Work Date	Work Code	Work Description	Cost	Thickness (in)	Major MR	Comments
07-03-2022	NC-PC	New Construction - PCC	\$0.00	6.00	True	6" PCC
07-02-2022	SB-AG	Subbase - Aggregate	\$0.00	0.00	False	6" MODIFIED SUBBASE W/ ENGINEERING FABRIC
07-01-2022	SG-CO	Subgrade - Compacted	\$0.00	12.00	False	12" SUBGRADE PREPARATION

## **APPENDIX E**

### **LOCALIZED PREVENTIVE MAINTENANCE POLICIES AND UNIT COST TABLES**

Table E-1. Localized preventive maintenance policy, asphalt-surfaced pavements.

<b>Distress Type</b>	<b>Severity Level</b>	<b>Maintenance Action</b>
Alligator Cracking	Low	Monitor
Alligator Cracking	Medium	Asphalt Patch
Alligator Cracking	High	Asphalt Patch
Bleeding	N/A	Monitor
Block Cracking	Low	Monitor
Block Cracking	Medium	Crack Seal—Asphalt
Block Cracking	High	Crack Seal—Asphalt
Corrugation	Low	Monitor
Corrugation	Medium	Asphalt Patch
Corrugation	High	Asphalt Patch
Depression	Low	Monitor
Depression	Medium	Monitor
Depression	High	Asphalt Patch
Jet-Blast Erosion	N/A	Asphalt Patch
Joint Reflection Cracking	Low	Monitor
Joint Reflection Cracking	Medium	Crack Seal—Asphalt
Joint Reflection Cracking	High	Crack Seal—Asphalt
L&T Cracking	Low	Monitor
L&T Cracking	Medium	Crack Seal—Asphalt
L&T Cracking	High	Crack Seal—Asphalt
Oil Spillage	N/A	Asphalt Patch
Patching	Low	Monitor
Patching	Medium	Asphalt Patch
Patching	High	Asphalt Patch
Polished Aggregate	N/A	Monitor
Raveling	Low	Monitor
Raveling	Medium	Asphalt Patch
Raveling	High	Asphalt Patch
Rutting	Low	Monitor
Rutting	Medium	Monitor
Rutting	High	Asphalt Patch
Shoving	Low	Monitor
Shoving	Medium	Asphalt Patch
Shoving	High	Asphalt Patch
Slippage Cracking	N/A	Asphalt Patch
Swelling	Low	Monitor
Swelling	Medium	Monitor
Swelling	High	Asphalt Patch
Weathering	Low	Monitor
Weathering	Medium	Monitor
Weathering	High	Asphalt Patch

Table E-2. Localized preventive maintenance policy, PCC pavements.

<b>Distress Type</b>	<b>Severity Level</b>	<b>Maintenance Action</b>
ASR	Low	Monitor
ASR	Medium	Slab Replacement
ASR	High	Slab Replacement
Blowup	Low	Slab Replacement
Blowup	Medium	Slab Replacement
Blowup	High	Slab Replacement
Corner Break	Low	Crack Seal—PCC
Corner Break	Medium	Full Depth PCC Patch
Corner Break	High	Full Depth PCC Patch
Durability Cracking	Low	Monitor
Durability Cracking	Medium	Full Depth Patch
Durability Cracking	High	Slab Replacement
Faulting	Low	Monitor
Faulting	Medium	Grinding
Faulting	High	Slab Replacement
Joint Seal Damage	Low	Monitor
Joint Seal Damage	Medium	Joint Seal
Joint Seal Damage	High	Joint Seal
LTD Cracking	Low	Monitor
LTD Cracking	Medium	Crack Seal—PCC
LTD Cracking	High	Slab Replacement
Patching (Small and Large)	Low	Monitor
Patching (Small and Large)	Medium	Full Depth PCC Patch
Patching (Small and Large)	High	Full Depth PCC Patch
Popouts	N/A	Monitor
Pumping	N/A	Monitor
Scaling	Low	Monitor
Scaling	Medium	Partial Depth PCC Patch
Scaling	High	Slab Replacement
Shattered Slab	Low	Crack Seal—PCC
Shattered Slab	Medium	Slab Replacement
Shattered Slab	High	Slab Replacement
Shrinkage Cracking	N/A	Monitor
Spalling (Joint and Corner)	Low	Monitor
Spalling (Joint and Corner)	Medium	Partial Depth PCC Patch
Spalling (Joint and Corner)	High	Partial Depth PCC Patch



Table E-3. 2024 unit costs for localized preventive maintenance actions.

Maintenance Action	Unit Cost
Asphalt Patch—Asphalt-Surfaced Pavement	\$15.54/sf
Crack Sealing—Asphalt-Surfaced Pavement	\$2.66/lf
Partial Depth PCC Patch—PCC Pavement	\$39.82/sf
Full Depth PCC Patch—PCC Pavement	\$17.78/sf
Crack Sealing—PCC Pavement	\$3.20/lf
Joint Sealing—PCC Pavement	\$3.20/lf
Grinding—PCC Pavement	\$0.38/sf
Slab Replacement—PCC Pavement	\$17.78/sf

Table Note: The unit cost estimates are based on broad statewide numbers and should be adjusted to reflect local costs.

Table E-4. 2024 unit costs (per square foot) based on pavement type and PCI ranges.

Pavement Type	PCI Range 0–40	PCI Range 40–50	PCI Range 50–60	PCI Range 60–70	PCI Range 70–80	PCI Range 80–90	PCI Range 90–100
AC	\$11.04	\$5.22	\$5.22	\$5.22	\$0.00	\$0.00	\$0.00
PCC	\$18.44	\$8.72	\$8.72	\$8.72	\$0.00	\$0.00	\$0.00

Table Note: The unit cost estimates are based on broad statewide numbers and should be adjusted to reflect local costs.

## **APPENDIX F**

### **YEAR 2024 LOCALIZED PREVENTIVE MAINTENANCE DETAILS**

Table F-1. Year 2024 localized preventive maintenance details.

Branch	Section	Distress Type	Severity	Distress Quantity	Distress Unit	Maintenance Action	Unit Cost	2024 Estimated Cost
A01MU	01	Joint Seal Damage	High	1,167	Slabs	Joint Seal (Localized)	\$3.20	\$89,404
A01MU	01	Joint Spalling	Medium	7	Slabs	Patching - PCC Partial Depth	\$39.82	\$1,876
A01MU	01	LTD Cracking	Medium	22	Slabs	Crack Sealing - PCC	\$3.20	\$865
A01MU	02	Joint Seal Damage	High	80	Slabs	Joint Seal (Localized)	\$3.20	\$5,787
A01MU	03	LTD Cracking	Medium	3	Slabs	Crack Sealing - PCC	\$3.20	\$103
A01MU	03	Joint Seal Damage	High	55	Slabs	Joint Seal (Localized)	\$3.20	\$3,147
A01MU	03	Joint Spalling	Medium	1	Slabs	Patching - PCC Partial Depth	\$39.82	\$257
A01MU	03	Small Patch	Medium	2	Slabs	Patching - PCC Full Depth	\$17.78	\$96
A01MU	03	ASR	Medium	4	Slabs	Slab Replacement - PCC	\$17.78	\$8,214
R06MU	01	Joint Seal Damage	High	3,520	Slabs	Joint Seal (Localized)	\$3.20	\$263,675
R06MU	01	Corner Spalling	Medium	19	Slabs	Patching - PCC Partial Depth	\$39.82	\$2,084
R12MU	01	Corner Spalling	Medium	9	Slabs	Patching - PCC Partial Depth	\$39.82	\$952
R12MU	01	Joint Seal Damage	High	1,920	Slabs	Joint Seal (Localized)	\$3.20	\$140,560
R12MU	01	Small Patch	Medium	9	Slabs	Patching - PCC Full Depth	\$17.78	\$425
TA1MU	02	Joint Seal Damage	High	139	Slabs	Joint Seal (Localized)	\$3.20	\$7,371
TAMU	01	Joint Spalling	Medium	1	Slabs	Patching - PCC Partial Depth	\$39.82	\$379
TAMU	01	Scaling	Medium	1	Slabs	Patching - PCC Partial Depth	\$39.82	\$2,106
TAMU	01	Joint Seal Damage	Medium	22	Slabs	Joint Seal (Localized)	\$3.20	\$1,153
TAMU	01	Joint Seal Damage	High	59	Slabs	Joint Seal (Localized)	\$3.20	\$3,075
TAMU	05	Joint Seal Damage	High	112	Slabs	Joint Seal (Localized)	\$3.20	\$5,785
TB1MU	01	Joint Seal Damage	High	161	Slabs	Joint Seal (Localized)	\$3.20	\$10,544
TB2MU	01	Corner Spalling	Medium	1	Slabs	Patching - PCC Partial Depth	\$39.82	\$125

Table F-1. Year 2024 localized preventive maintenance details (continued).

Branch	Section	Distress Type	Severity	Distress Quantity	Distress Unit	Maintenance Action	Unit Cost	2024 Estimated Cost
TB2MU	01	LTD Cracking	Medium	2	Slabs	Crack Sealing - PCC	\$3.20	\$90
TB2MU	01	Corner Break	Medium	1	Slabs	Patching - PCC Full Depth	\$17.78	\$671
TB2MU	01	Joint Seal Damage	Medium	29	Slabs	Joint Seal (Localized)	\$3.20	\$1,809
TB2MU	01	Joint Seal Damage	High	54	Slabs	Joint Seal (Localized)	\$3.20	\$3,328
TB2MU	01	Joint Spalling	Medium	1	Slabs	Patching - PCC Partial Depth	\$39.82	\$301
TBMU	01	Joint Seal Damage	High	103	Slabs	Joint Seal (Localized)	\$3.20	\$6,781
TBMU	01	Joint Seal Damage	Medium	30	Slabs	Joint Seal (Localized)	\$3.20	\$1,938
TBMU	02	Joint Spalling	Medium	5	Slabs	Patching - PCC Partial Depth	\$39.82	\$1,255
TBMU	02	LTD Cracking	Medium	49	Slabs	Crack Sealing - PCC	\$3.20	\$1,888
TBMU	02	Joint Seal Damage	High	820	Slabs	Joint Seal (Localized)	\$3.20	\$52,370
TBMU	03	Joint Seal Damage	High	54	Slabs	Joint Seal (Localized)	\$3.20	\$3,309
TBMU	04	Joint Seal Damage	High	133	Slabs	Joint Seal (Localized)	\$3.20	\$6,869
TBMU	05	Joint Seal Damage	High	138	Slabs	Joint Seal (Localized)	\$3.20	\$7,305
TH01MU	03	LTD Cracking	Medium	6	Slabs	Crack Sealing - PCC	\$3.20	\$194
TH01MU	03	Joint Seal Damage	High	227	Slabs	Joint Seal (Localized)	\$3.20	\$13,075
TH01MU	03	Joint Spalling	Medium	4	Slabs	Patching - PCC Partial Depth	\$39.82	\$965
TH01MU	04	Joint Spalling	Medium	1	Slabs	Patching - PCC Partial Depth	\$39.82	\$367
TH01MU	04	Joint Seal Damage	Medium	124	Slabs	Joint Seal (Localized)	\$3.20	\$7,339

## Table Notes:

1. See Figure 3 for the location of the branch and section.
2. Distress types are defined by ASTM D5340-20. L&T Cracking = Longitudinal and Transverse Cracking; LTD Cracking = Longitudinal, Transverse, and Diagonal Cracking; ASR = Alkali-Silica Reaction.
3. The costs provided are of a general nature for the entire state and may require adjustment to reflect specific conditions at Muscatine Municipal Airport.



**PREPARED FOR**

Iowa Department of Transportation  
Modal Transportation Bureau – Aviation  
800 Lincoln Way  
Ames, Iowa 50010  
515-239-1691  
<https://iowadot.gov/aviation>

**JULY 2024**