

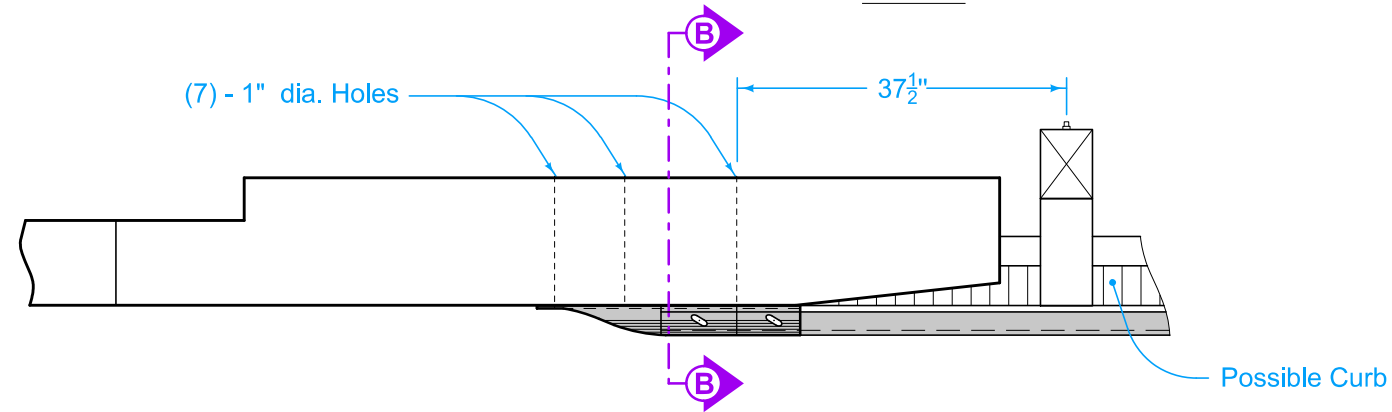
- ① See BA-201.
- ② BTS post # 14 BA-201. BTS post #5 BA-221.
- ③ Lap the Terminal Connector on the outside of the nested thrie beam rails for attachments on the trailing end of a bridge.

Possible Contract Item:
Steel Beam Guardrail End Anchor, Bolted

Materials included in the Contract Item:
Thrie-Beam Terminal Connector
Approved $\frac{7}{8}$ " x sufficient length Hex Bolts
Approved $\frac{7}{8}$ " Hex Nuts
Approved $\frac{15}{16}$ " Washers

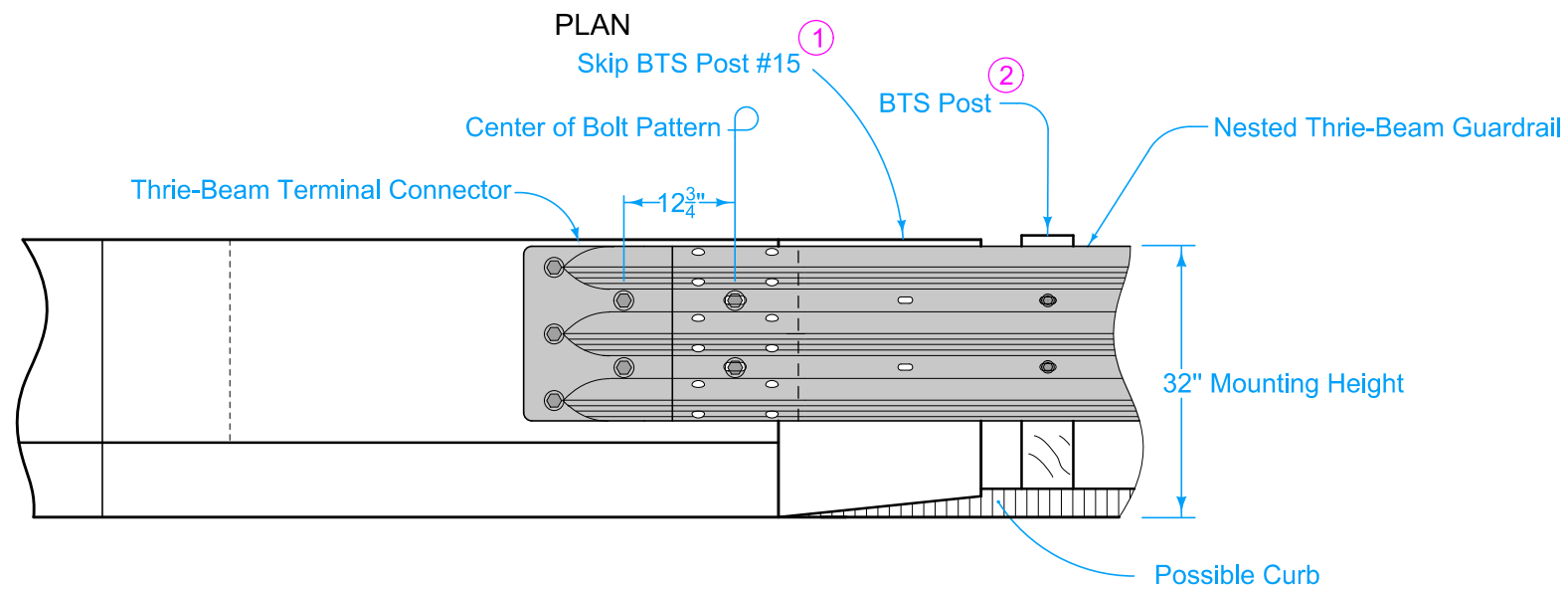
<p>STANDARD ROAD PLAN</p>	REVISION	
	6	4-15-25
BA-202		
SHEET 1 of 4		
REVISIONS: Added 32" mounting height to Type 'D'.		
<p>APPROVED BY DESIGN METHODS ENGINEER</p>		
<p>STEEL BEAM GUARDRAIL BOLTED END ANCHOR</p>		

TYPE B

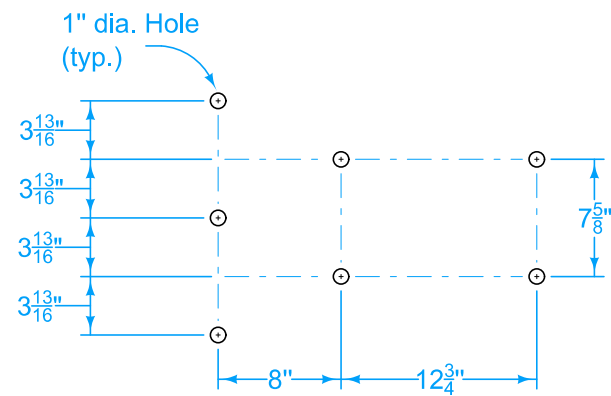


- ① See BA-201.
- ② BTS post # 14 BA-201. BTS post #5 BA-221.

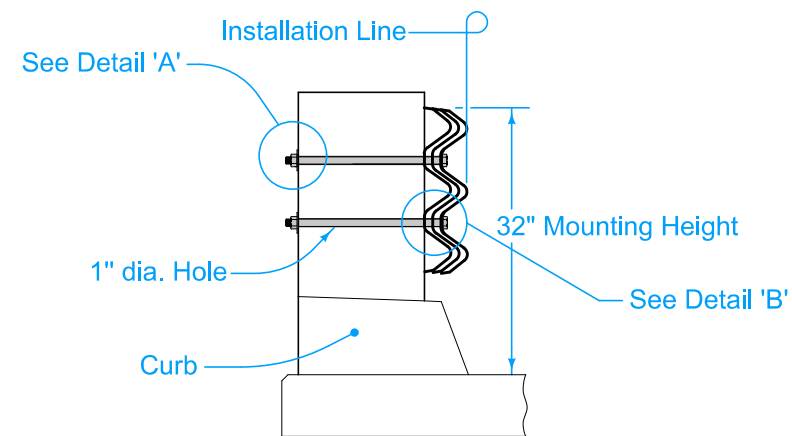
PLAN



ELEVATION



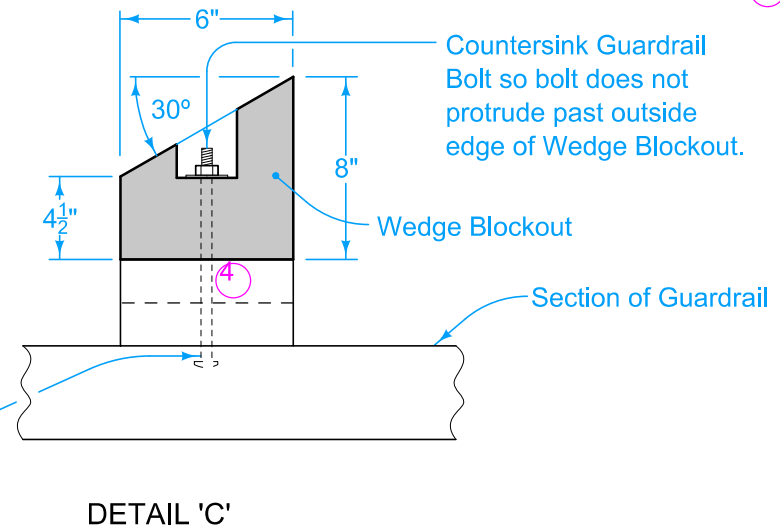
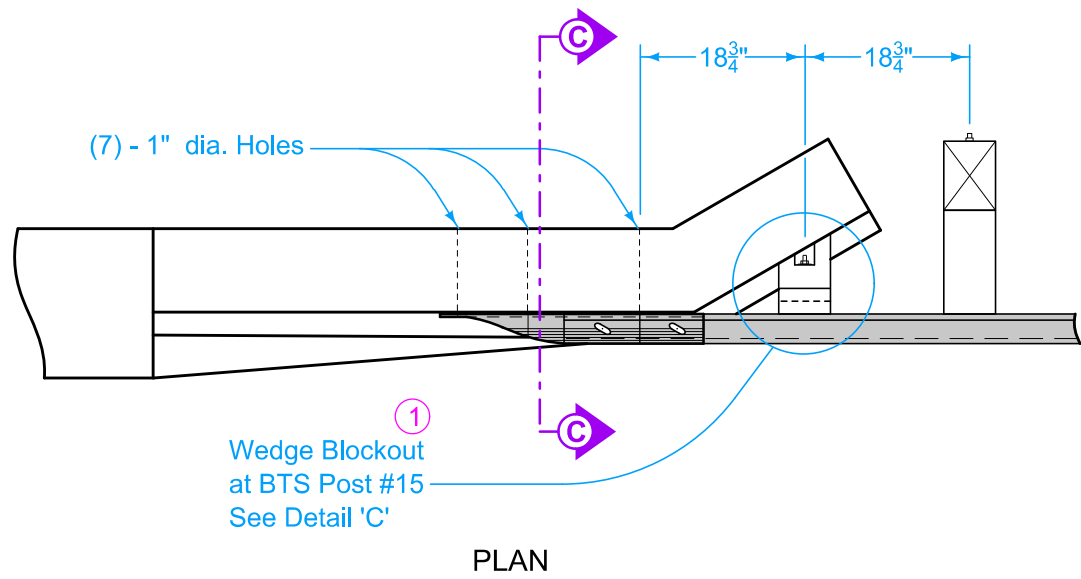
7 - BOLT PATTERN
Thrie - Beam Terminal Connector



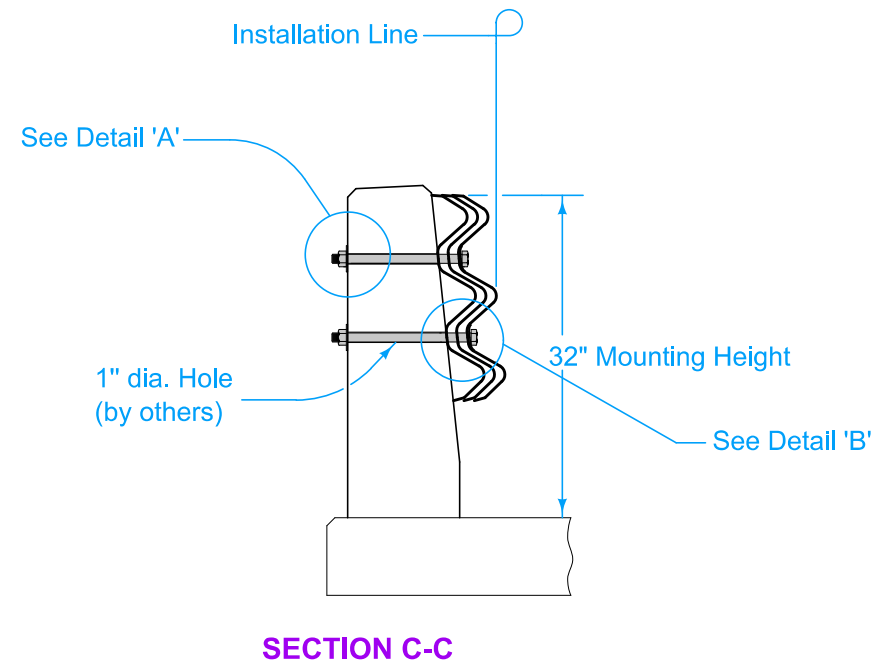
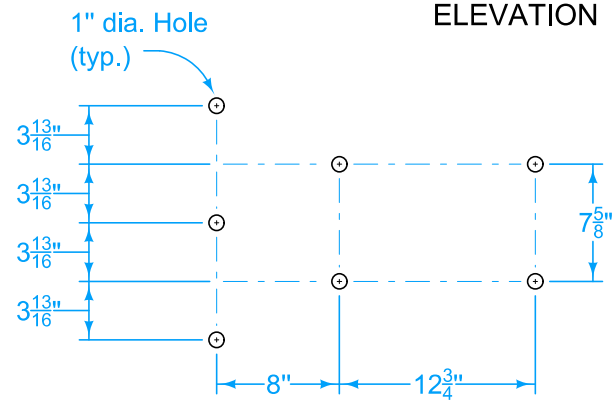
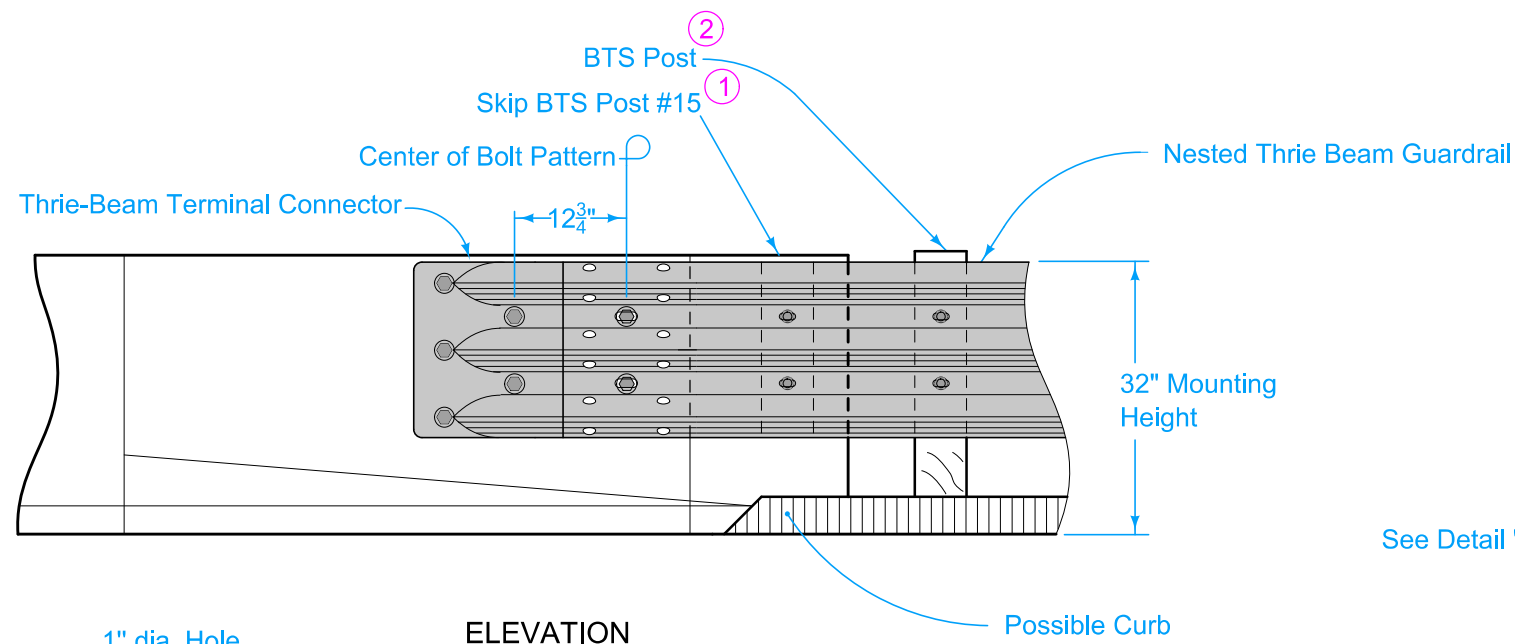
SECTION B-B

	REVISION	
	6	4-15-25
STANDARD ROAD PLAN		BA-202
REVISIONS: Added 32" mounting height to Type 'D'.		SHEET 2 of 4
 APPROVED BY DESIGN METHODS ENGINEER		
STEEL BEAM GUARDRAIL BOLTED END ANCHOR		

TYPE C



(2) Approximately 6" long Guardrail Bolts

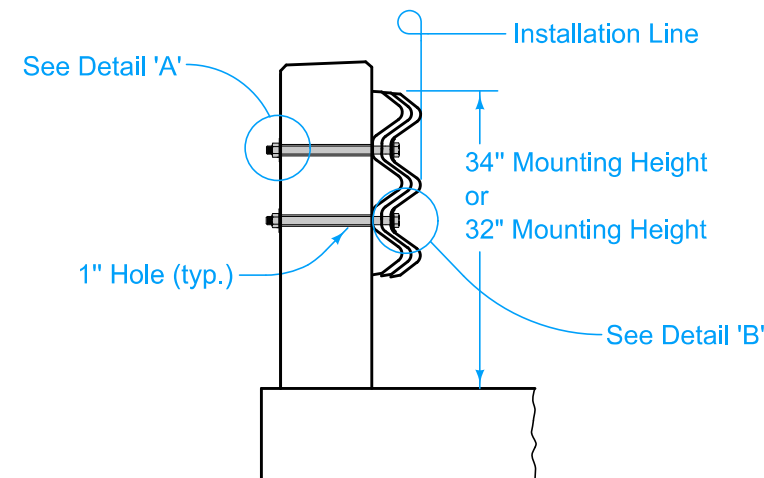
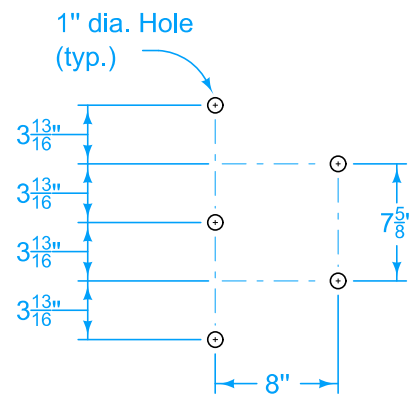
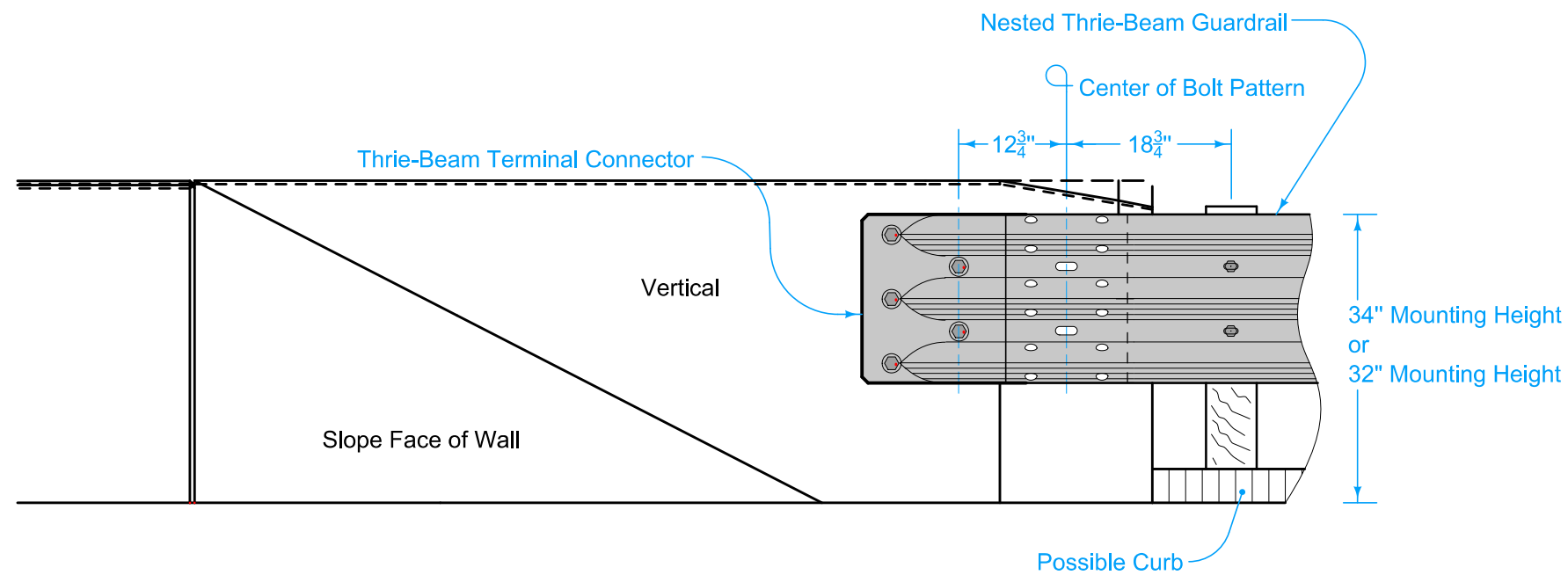
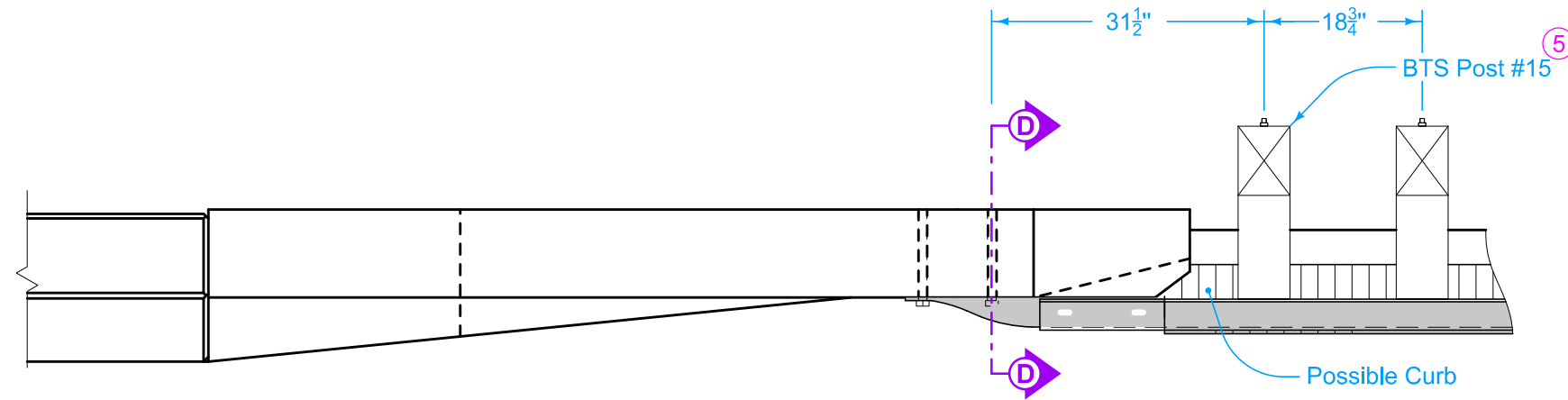


- 1 See BA-201.
- 2 BTS post # 14 BA-201. BTS post #5 BA-221.
- 4 Use treated spacer boards (1 in. x 6 in. or 2 in. x 6 in.) to produce a tight fit between the wedge blockout and endpost. A nominal 1 inch gap is acceptable. Spacer boards are incidental to bolted end anchor.

 IOWA DOT STANDARD ROAD PLAN	REVISION	
	6	4-15-25
BA-202 SHEET 3 of 4		
REVISIONS: Added 32" mounting height to Type 'D'.		
 APPROVED BY DESIGN METHODS ENGINEER		
STEEL BEAM GUARDRAIL BOLTED END ANCHOR		

TYPE D

⑤ See BA-209 for 34" mounting height. See BA-201 for 32" mounting height.



	REVISION	
	6	4-15-25
STANDARD ROAD PLAN		BA-202
REVISIONS: Added 32" mounting height to Type 'D'.		SHEET 4 of 4
APPROVED BY DESIGN METHODS ENGINEER		

**STEEL BEAM GUARDRAIL
BOLTED END ANCHOR**