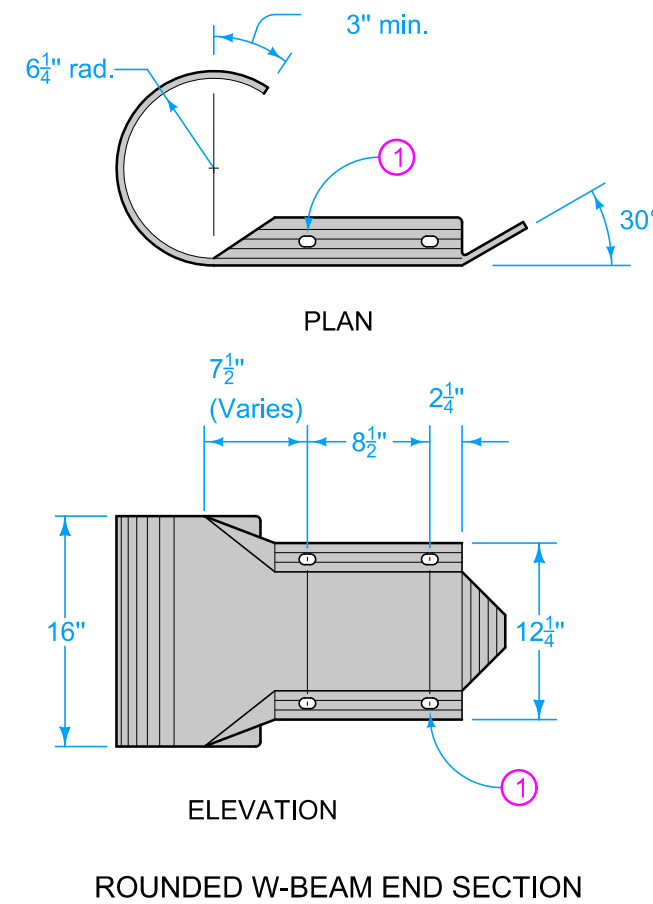
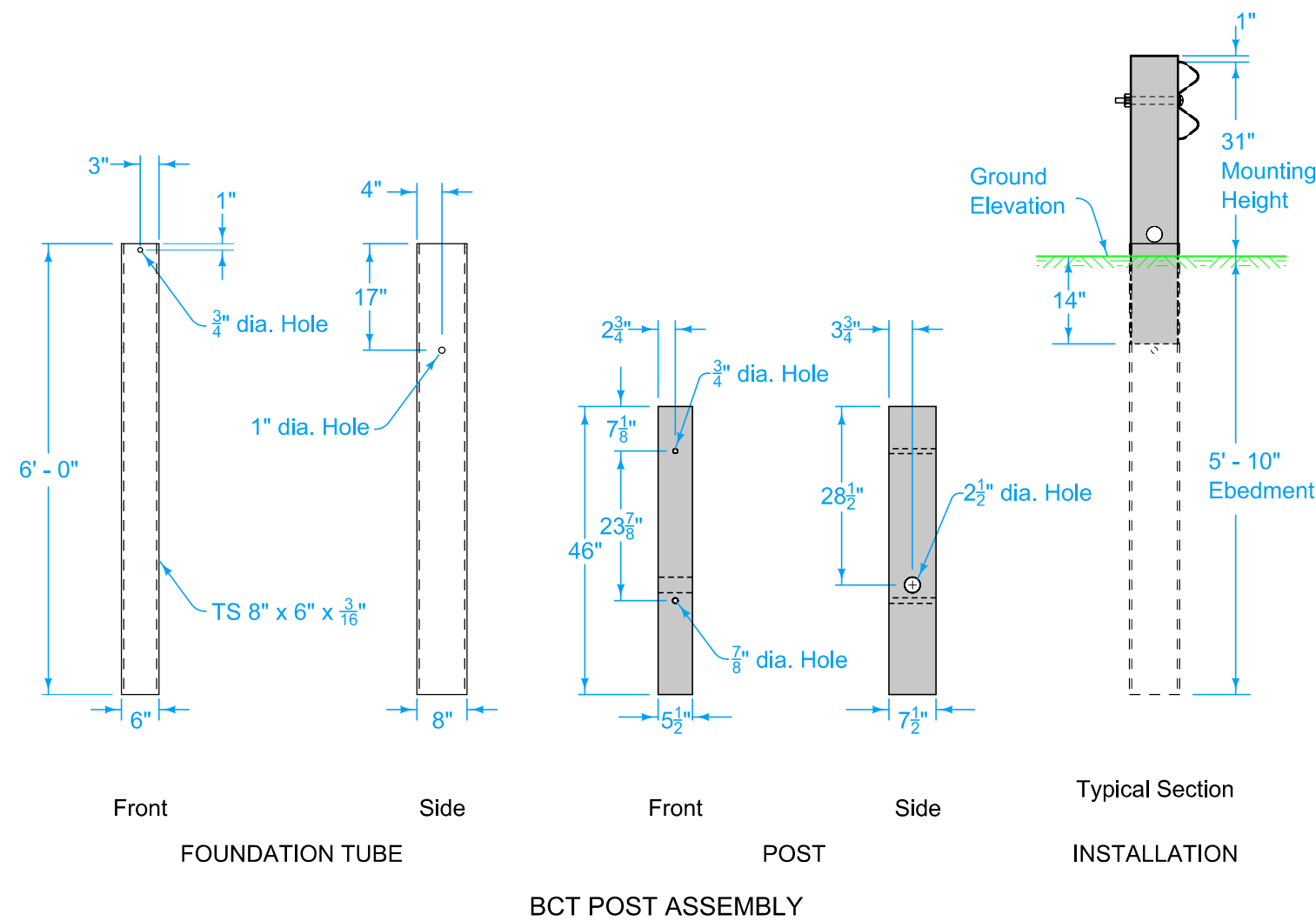
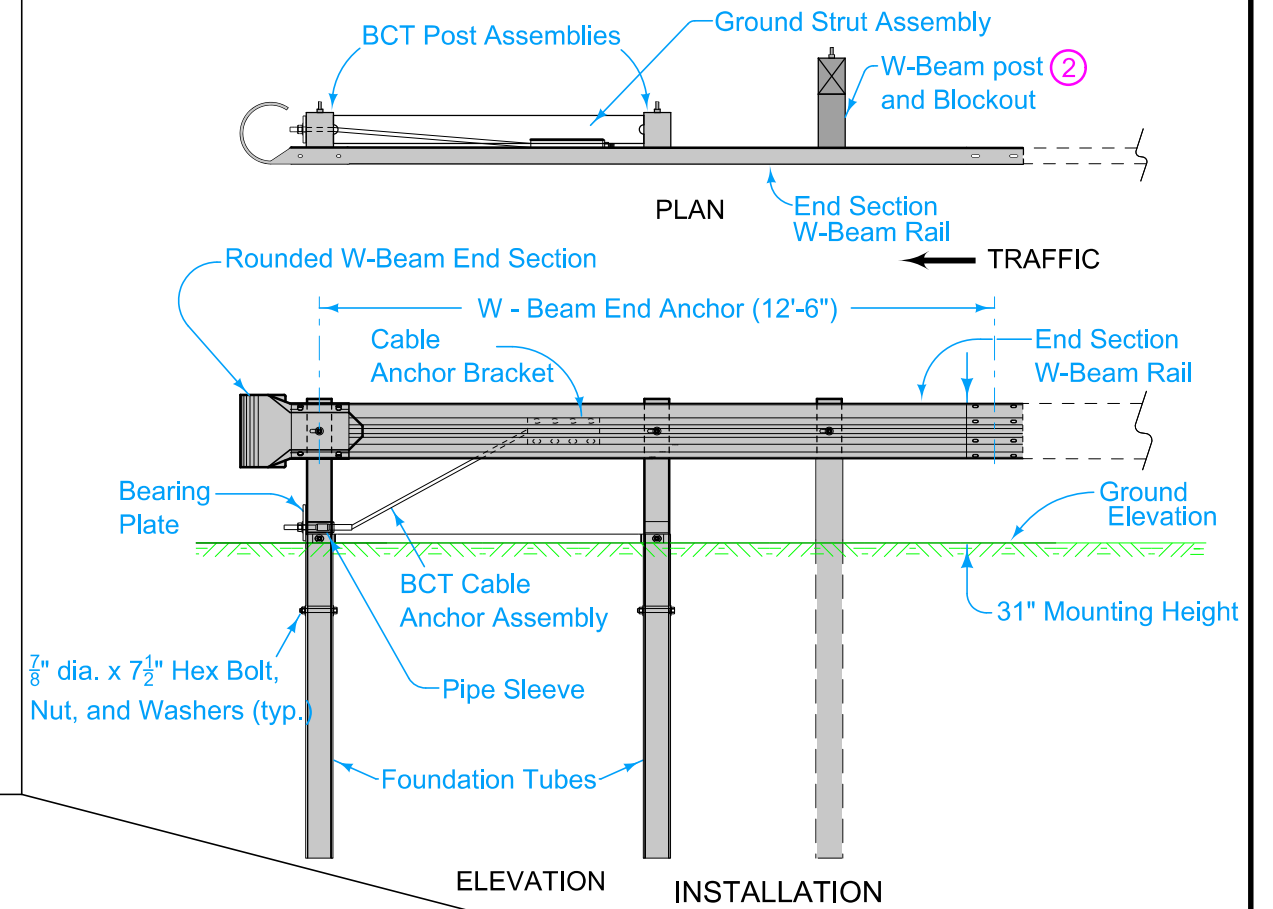
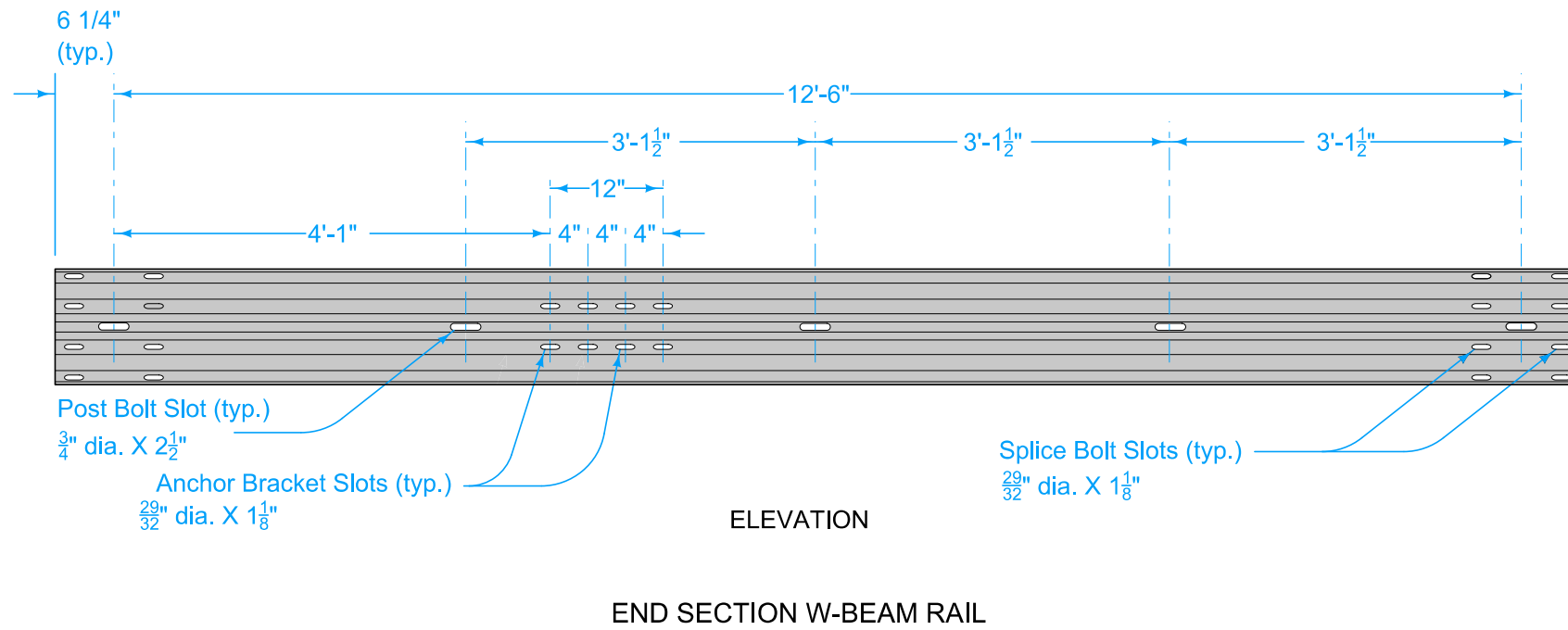


# DESIGNER INFORMATION



- ① 29/32" x 1 1/8" slots (29/32" x 3" slots acceptable).
- ② Refer to BA-200.

Possible Contract Item:  
Steel Beam Guardrail End Anchor, W-Beam

- Materials included in the Contract Item:
- (1) 12'-6" End Section W-Beam Rail
  - (2) Foundation Tube Assemblies
  - (2) BCT Wood Posts
  - (1) Rounded W-Beam End Section
  - (1) Cable Anchor Bracket
  - (1) BCT Cable Anchor Assembly
  - (1) Ground Strut Assembly
  - (1) Pipe Sleeve
  - (1) Bearing Plate
  - (1) W-Beam Post (wood or steel - match remainder of installation)
  - (1) W-Beam Blockout
- Approved bolts, nuts, and washers

 <b>STANDARD ROAD PLAN</b>	REVISION	
	2	10-15-19
<b>BA-203</b>		
SHEET 1 of 1		
REVISIONS: New logo.		
 <small>APPROVED BY DESIGN METHODS ENGINEER</small>		

## STEEL BEAM GUARDRAIL W-BEAM END ANCHOR