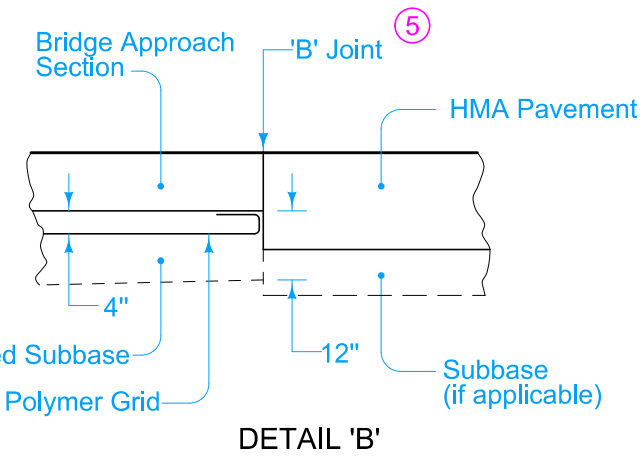
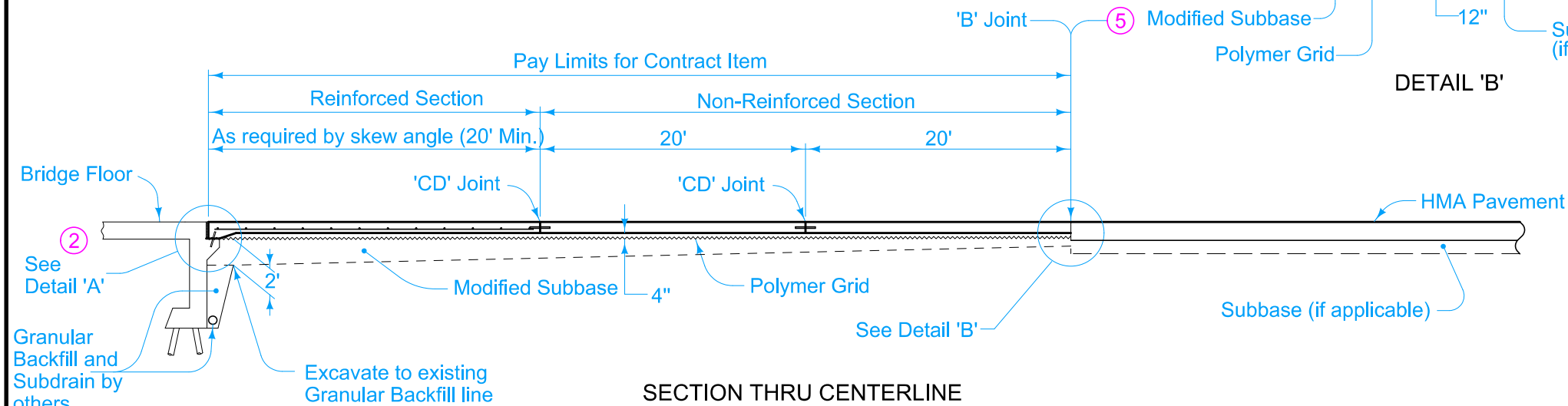


PLAN VIEW



DETAIL 'B'



SECTION THRU CENTERLINE

For joint details, see PV-101.

- ① Build curb to end of Reinforced Bridge Approach Section. See Curb Location Details (Section B-B on BR-101).
- ② See BR-101.
- ③ Longitudinal Joints (PV-101):
Single Pour - Saw cut joint per Detail B.
Two Pours - Use 'KS-1' joint.
- ④ Excavation limits of Modified Subbase 2 feet outside of pavement edge, see BR-101.
- ⑤ The Contractor may need to saw cut the HMA pavement full depth to accommodate the 'B' joint.
- ⑥ Place 'RD' joint where PCC shoulder. Place 'B' joint otherwise.

Possible Contract Item:
 Bridge Approach, Two Lane
 Longitudinal Grooving in Concrete, Bridge Deck
 Longitudinal Grooving in Concrete, Pavement

Possible Tabulation:
 112-6

 STANDARD ROAD PLAN	REVISION	
	1	10-15-24
BR-105		
SHEET 1 of 1		
REVISIONS: Added Longitudinal Grooving in Concrete to possible contract item.		
 APPROVED BY DESIGN METHODS ENGINEER		
BRIDGE APPROACH SECTION (TWO-LANE, HMA PAVEMENT)		