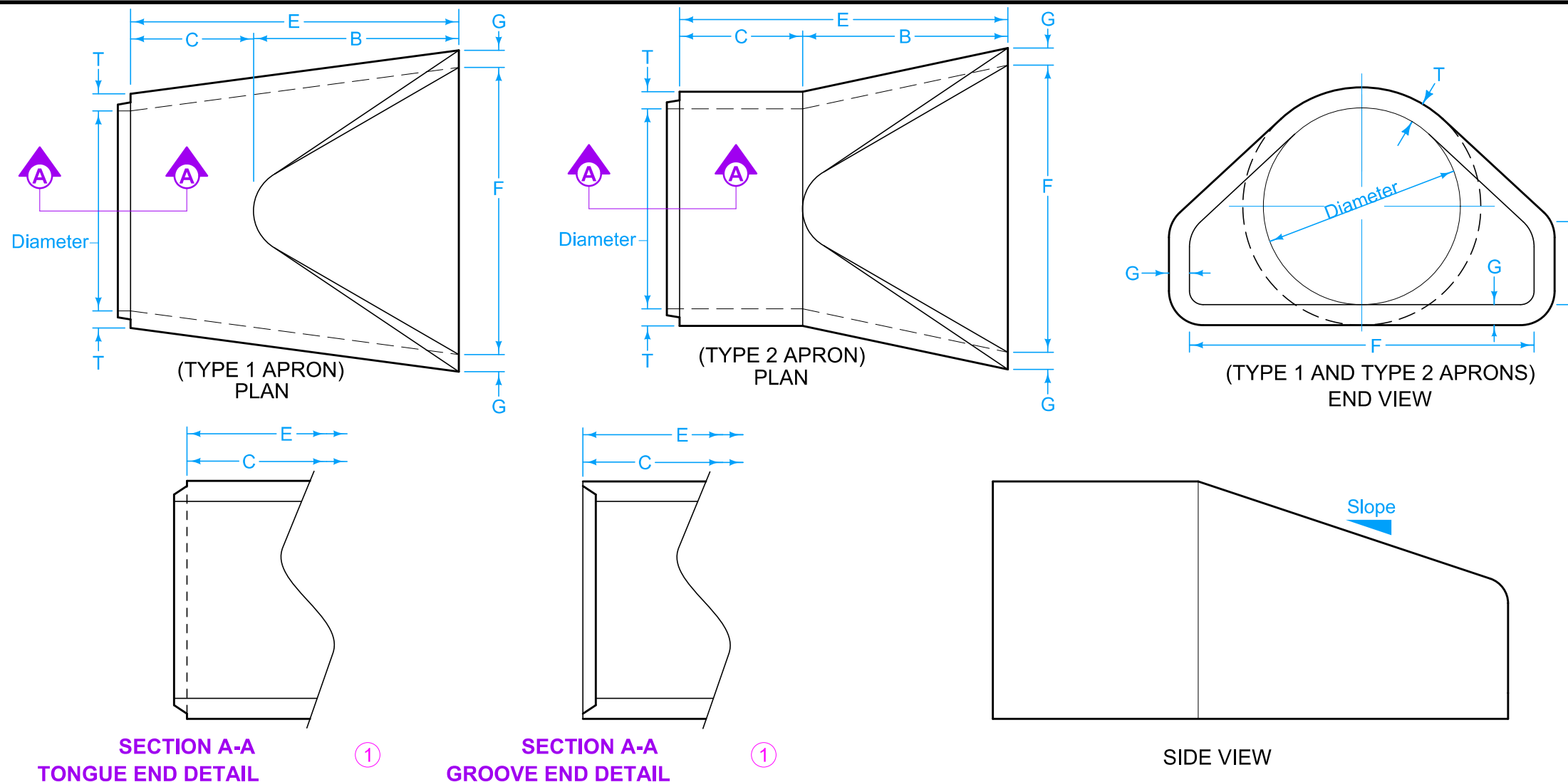


DESIGNER INFORMATION



Dimension 'E' shown is the minimum and is considered the design length. Adjust for any difference between the actual length of concrete apron installed and the length indicated hereon within the length of concrete culvert pipe furnished.

Install connected pipe joints as shown on DR-121.

When specified in the contract documents, install pipe apron guards as shown on DR-213. Pipe apron guards are incidental to "Concrete Aprons".

Slight variations in both shape and dimensions from those shown may be accepted if approved by the engineer.

① Tongue end used on inlet end section. Groove end used on outlet end section.

TYPE 1 APRONS								
DIAM.	SLOPE	A	B	MINIMUM		F	G	T
				C	E			
12"	2.4:1	4"	2'-0"	4'- ⁷ / ₈ "	6'- ⁷ / ₈ "	2'-0"	2"	2"
15"	2.4:1	6"	2'-3"	3'-10"	6'-1"	2'-6"	2 ¹ / ₄ "	2 ¹ / ₄ "
18"	2.3:1	9"	2'-3"	3'-10"	6'-1"	3'-0" *	2 ¹ / ₂ "	2 ¹ / ₂ "
21"	2.4:1	9"	3'-0"	3'-1 ¹ / ₂ "	6'-1 ¹ / ₂ "	3'-5"	3"	3"
24"	2.5:1	9 ¹ / ₂ "	3'-7 ¹ / ₂ "	2'-6"	6'-1 ¹ / ₂ "	4'-0"	3"	3"
27"	2.5:1	10 ¹ / ₂ "	4'-1"	2'-0"	6'-1 ¹ / ₂ "	4'-4"	3 ¹ / ₂ "	3 ¹ / ₂ "
30"	2.5:1	12"	4'-6"	1'-7 ³ / ₄ "	6'-1 ³ / ₄ "	5'-0"	3 ¹ / ₂ "	3 ¹ / ₂ "
36"	2.5:1	15"	5'-3"	2'-9"	8'-0"	6'-0"	4"	4"
42"	2.5:1	21"	5'-3"	2'-9"	8'-0"	6'-6"	4 ¹ / ₂ "	4 ¹ / ₂ "
48"	2.5:1	24"	6'-0"	2'-0"	8'-0"	7'-0"	5"	5"
54"	1.8:1	27"	5'-0"	3'-0"	8'-0"	7'-6"	5 ¹ / ₂ "	5 ¹ / ₂ "
60"	1.6:1	29 ¹ / ₂ "	5'-0"	3'-0"	8'-0"	8'-0"	5 ¹ / ₂ "	6"
66"	1.7:1	30"	6'-0"	2'-3"	8'-3"	8'-0"	5 ¹ / ₂ "	6"
72"	1.6:1	30"	6'-6"	1'-9"	8'-3"	9'-0"	6"	7"
78"	1.8:1	36"	7'-6"	1'-9"	9'-3"	9'-6"	6 ¹ / ₂ "	7 ¹ / ₂ "
84"	1.3:1	29 ¹ / ₂ "	6'-9"	2'-6 ¹ / ₂ "	9'-3 ¹ / ₂ "	10'-0"	6 ¹ / ₂ "	8"

TYPE 2 APRONS								
DIAM.	SLOPE	A	B	MINIMUM		F	G	T
				C	E			
12"	2.4:1	4"	2'-0"	4'- ⁷ / ₈ "	6'- ⁷ / ₈ "	2'-0"	2"	2"
15"	2.4:1	6"	2'-3"	3'-10"	6'-1"	2'-6"	2 ¹ / ₄ "	2 ¹ / ₄ "
18"	2.3:1	9"	2'-3"	3'-10"	6'-1"	3'-0" *	2 ¹ / ₂ "	2 ¹ / ₂ "
21"	2.4:1	9"	3'-0"	3'-1 ¹ / ₂ "	6'-1 ¹ / ₂ "	3'-5"	3"	3"
24"	2.5:1	9 ¹ / ₂ "	3'-7 ¹ / ₂ "	2'-6"	6'-1 ¹ / ₂ "	4'-0"	3"	3"
27"	2.5:1	10 ¹ / ₂ "	4'-1"	2'-0"	6'-1 ¹ / ₂ "	4'-4"	3 ¹ / ₂ "	3 ¹ / ₂ "
30"	2.5:1	12"	4'-6"	1'-7 ³ / ₄ "	6'-1 ³ / ₄ "	5'-0"	3 ¹ / ₂ "	3 ¹ / ₂ "
36"	2.5:1	15"	5'-3"	2'-9"	8'-0"	6'-0"	4"	4"
42"	2.5:1	21"	5'-3"	2'-9"	8'-0"	6'-6"	4 ¹ / ₂ "	4 ¹ / ₂ "
48"	2.5:1	24"	6'-0"	2'-0"	8'-0"	7'-0"	5"	5"
54"	1.9:1	24 ¹ / ₂ "	5'-5"	2'-7"	8'-0"	7'-6"	5 ¹ / ₂ "	5 ¹ / ₂ "
60"	1.4:1	24 ¹ / ₂ "	5'-0"	3'-0"	8'-0"	8'-0"	5 ¹ / ₂ "	6"
66"	1.7:1	30"	6'-0"	2'-3"	8'-3"	8'-0"	5 ¹ / ₂ "	6"
72"	1.4:1	24"	6'-6"	1'-9"	8'-3"	9'-0"	6"	7"
78"	1.8:1	36"	7'-6"	1'-9"	9'-3"	9'-6"	6 ¹ / ₂ "	7 ¹ / ₂ "
84"	1.5:1	23 ¹ / ₂ "	7'-6 ¹ / ₂ "	1'-9"	9'-3 ¹ / ₂ "	10'-0"	6 ¹ / ₂ "	8"

Contract Item:
Apron, Concrete

Tabulations:
104-3
104-5C

	REVISION	
	3	10-17-23
STANDARD ROAD PLAN		DR-201
SHEET 1 of 1		
REVISIONS: Added note about shape and dimensions.		
APPROVED BY DESIGN METHODS ENGINEER		
CONCRETE APRONS		