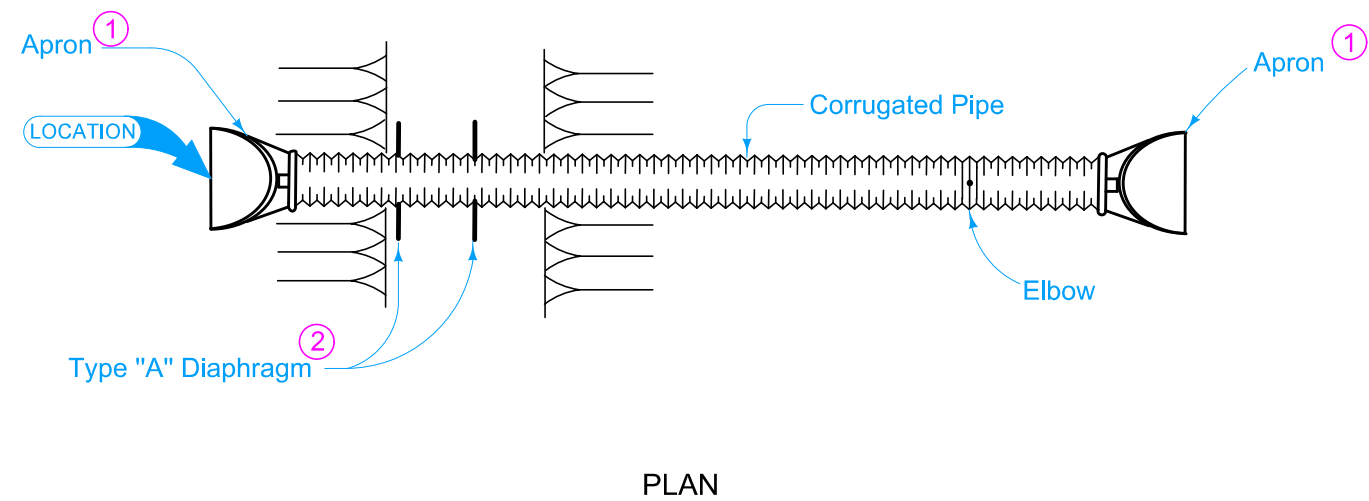
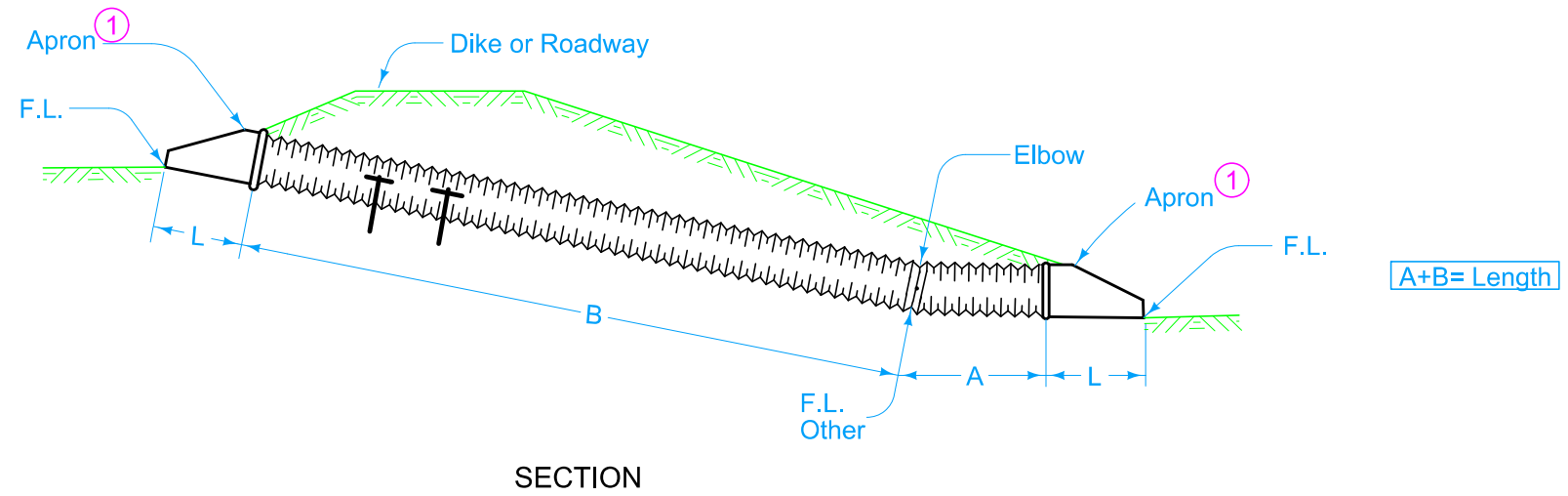


Standard type joint couplings are required. See Materials I.M. 441.

- ① Refer to the following:  
DR-203 for the circular metal.  
DR-204 for arch metal.
- ② See DR-501. If more than one diaphragm is specified, install 15 feet apart or as specified.



Possible Tabulation:  
104-3

	REVISION	
	1	04-18-17
<b>STANDARD ROAD PLAN</b>		<b>DR-631</b>
		SHEET 1 of 1
REVISIONS: Modified note 1 to include references to additional apron types.		
APPROVED BY DESIGN METHODS ENGINEER		
<b>CORRUGATED PIPE CULVERT LETDOWN STRUCTURE WITH SINGLE ELBOW</b>		