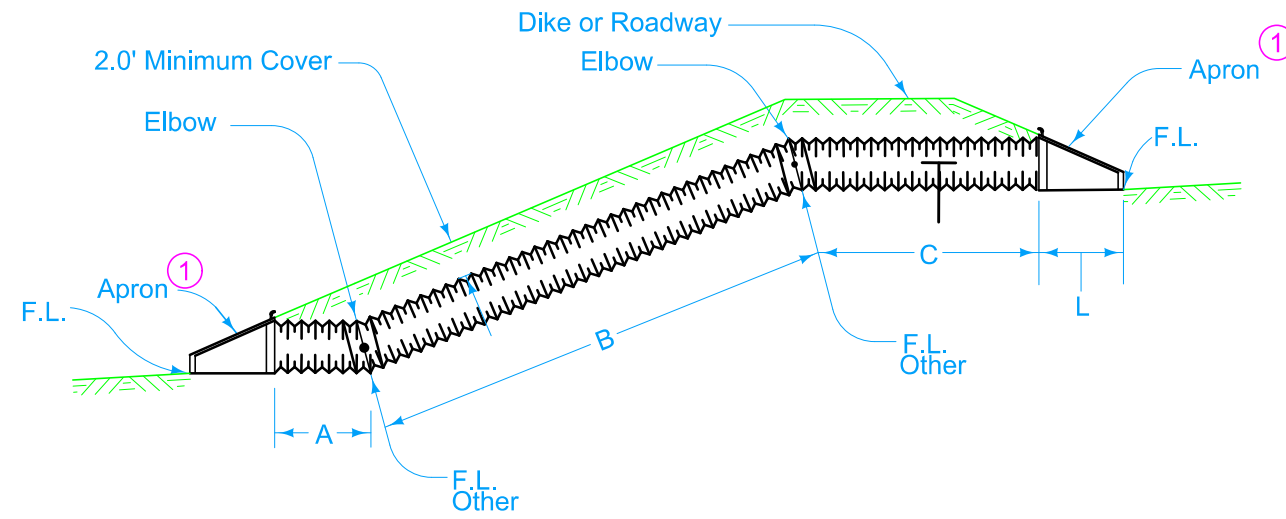


Standard type joint couplings are required. See Materials I.M. 441.

Connection to outlet, if required, is incidental and will not be paid for separately.

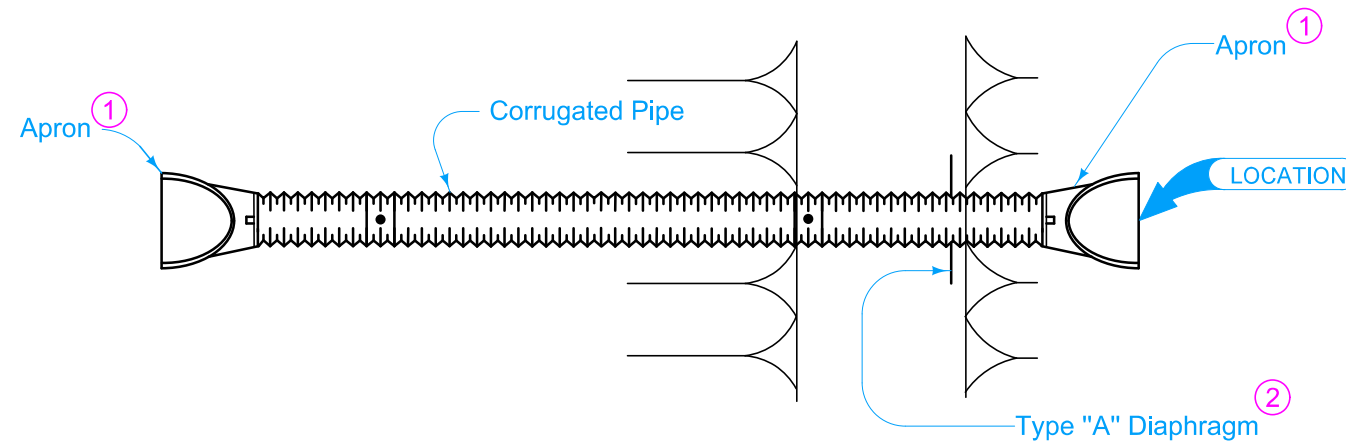
① Refer to the following:
DR-203 for the circular metal.
DR-204 for arch metal.

② See DR-501. If more than one diaphragm is specified, install 15 feet apart or as specified.



A+B+C = Pipe Length

SECTION



PLAN

Possible Tabulations:
104-3

	REVISION	
	1	04-18-17
	DR-632 SHEET 1 of 1	

REVISIONS: Modified note 1 to include references to additional apron types.

Shawn Miller
APPROVED BY DESIGN METHODS ENGINEER

**CORRUGATED PIPE CULVERT
LETDOWN STRUCTURE
WITH DOUBLE ELBOW**