

\bar{E} is \bar{C} of roadway, dike, survey, or other as detailed on the plans.

Connection to outlet, if required, is incidental and will not be paid for separately

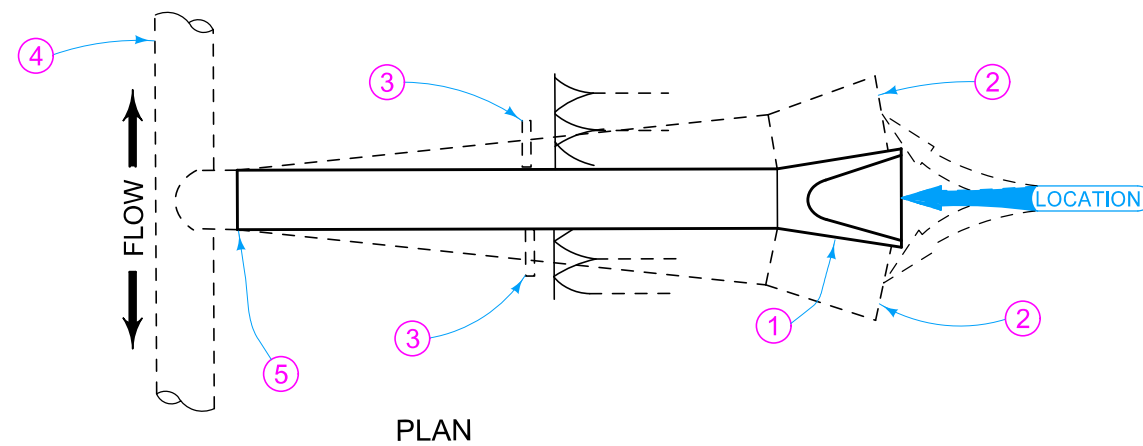
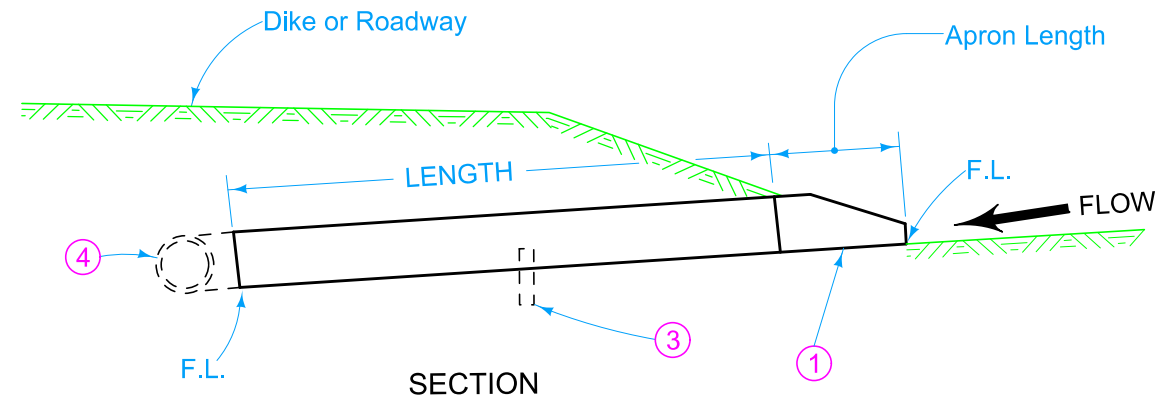
- ① Refer to the following:
 DR-201 for circular concrete.
 DR-202 for low clearance concrete.
 DR-203 for circular metal.
 DR-204 for arch metal (metal pipe only).
 DR-205 for circular concrete with end wall.
 DR-206 for low clearance concrete with end wall.

- ② Possible alignment if Type "D" Section or angle Tee is used.

- ③ Type "A" Diaphragm when specified, see DR-501.

- ④ Outlet structure.

- ⑤ Type "D" Section or angle Tee when specified.



Possible Tabulation:
104-3

 STANDARD ROAD PLAN	REVISION	
	1	04-18-17
DR-642		SHEET 1 of 1

REVISIONS: Modified note 1 to include references to additional apron types.

Shawn Miller
APPROVED BY DESIGN METHODS ENGINEER

APRON PIPE TEE INLET