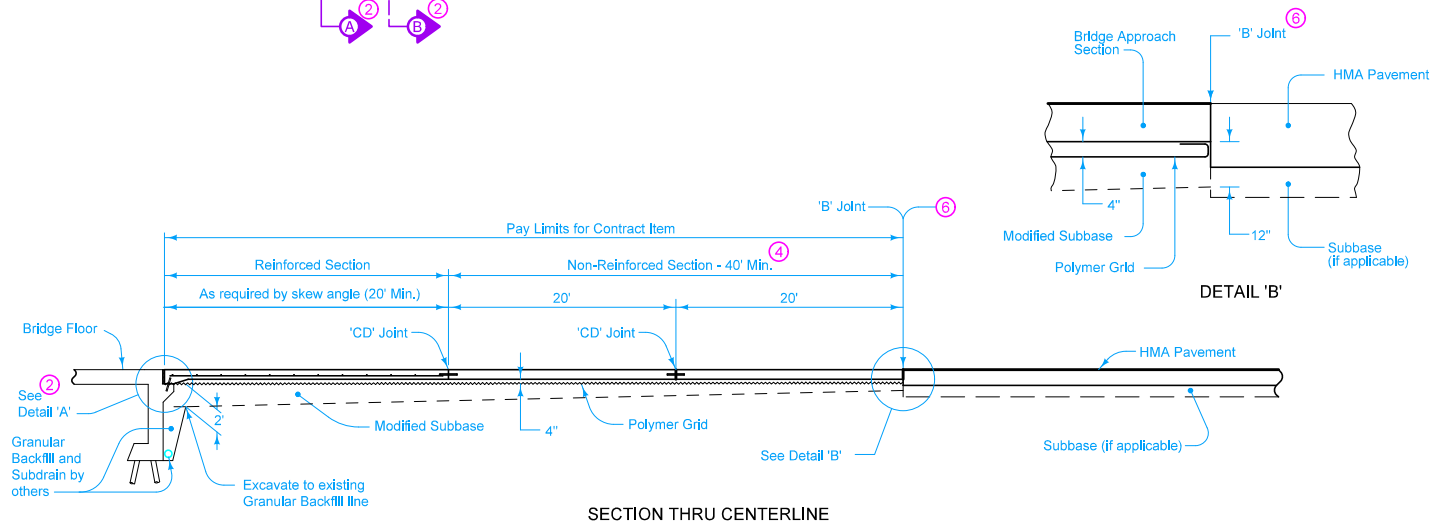
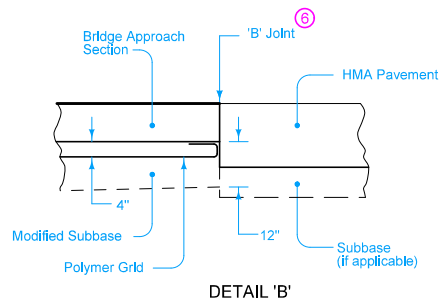


PLAN VIEW



SECTION THRU CENTERLINE



DETAIL 'B'

For joint details, see PV-101.

- ① Build curb to end of Reinforced Bridge Approach Section. See Curb Location Details (Section B-B on BR-101).
- ② See BR-101.
- ③ Longitudinal Joint (PV-101):
Single Pour - Saw cut joint per Detail B.
Two Pours - Use 'KS-1' joint.
- ④ Minimum 2 panels, maximum 3 panels. 20 foot panel length. Use 'CD' joints.
- ⑤ Excavation limits of Modified Subbase 2 feet outside of pavement edge, see BR-101.
- ⑥ The Contractor may need to saw cut the HMA pavement full depth to accommodate the 'B' joints.
- ⑦ Place 'RD' joint where PCC shoulder. Place 'B' joint otherwise.

Possible Contract Item:
Bridge Approach, Two Lane

Possible Tabulation:
112-6

	REVISION
	New 04-21-15
STANDARD ROAD PLAN	BR-106
SHEET 1 of 1	
<small>REVISIONS: New. Replaces RK-19H.</small>	
<small>APPROVED BY DESIGN METHODS ENGINEER</small>	
BRIDGE APPROACH SECTION (TWO-LANE FOR BRIDGE RECONSTRUCTION, HMA PAVEMENT)	