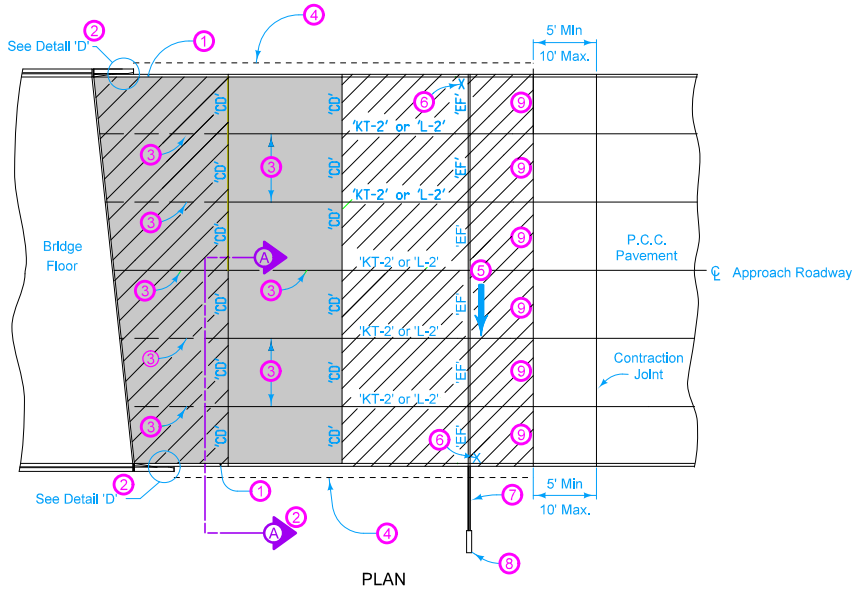
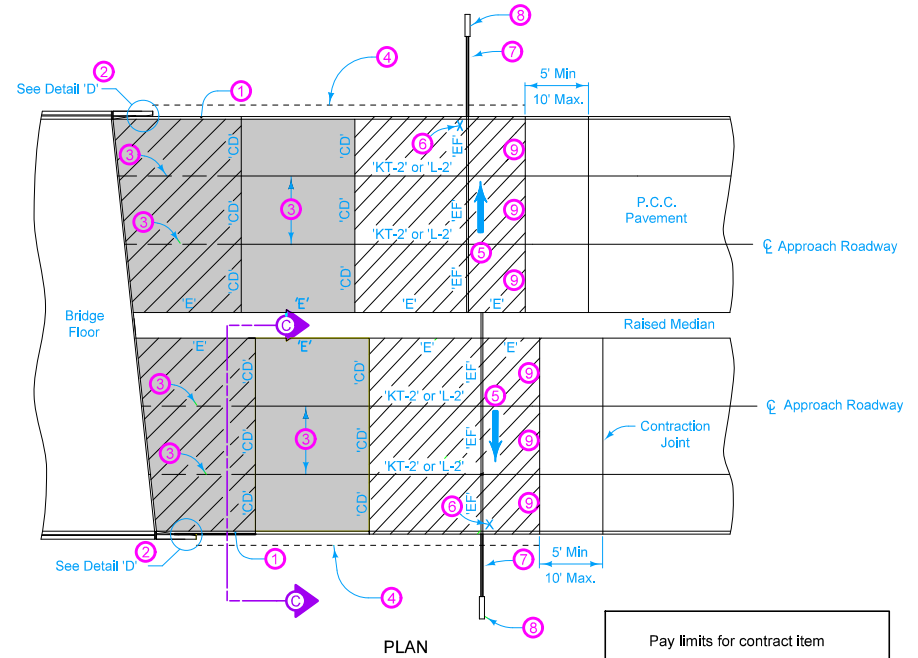


For joint details, see PV-101.



PLAN

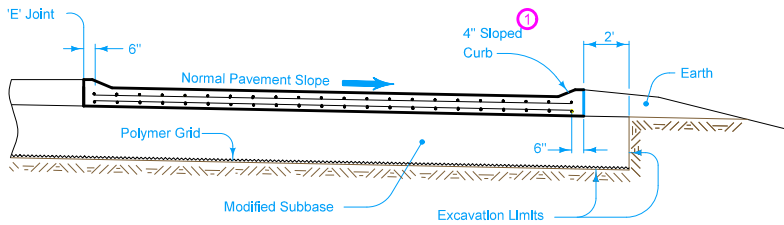


PLAN

Pay limits for contract item include the following areas:

	Double Reinforced Section
	Single Reinforced Section
	Non-Reinforced Section

- 1 Build 4 inch Sloped Curb, unless noted otherwise in the plans.
- 2 See BR-201, BR-202, BR-203, or BR-204.
- 3 Longitudinal Joint (PV-101):
Single Pour - Saw cut joint per Detail B.
Two Pours - Use 'KS-1' joint (Single Reinforced Section).
Use 'KS-2' joint (Double Reinforced Section).
- 4 Polymer Grid and excavation limits of Modified Subbase 2 feet outside of pavement edge. See BR-201, BR-202, BR-203, or BR-204.
- 5 Slope subdrain to drain.
- 6 Place an "X" in the plastic concrete near the 'EF' joint at the outside edge of pavement.
- 7 4 inch perforated subdrain (polyethylene, corrugated tubing).
- 8 See DR-303 or DR-306 for outlet details
- 9 'DW' or 'RT' joint.



SECTION C-C

	REVISION
	1 10-17-17
STANDARD ROAD PLAN	BR-231
REVISIONS: Changed DR-304 to DR-306.	SHEET 1 of 1
 APPROVED BY DESIGN METHODS ENGINEER	
BRIDGE APPROACH (MULTI-LANE, CURBED ROADWAY)	