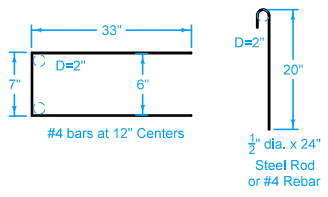
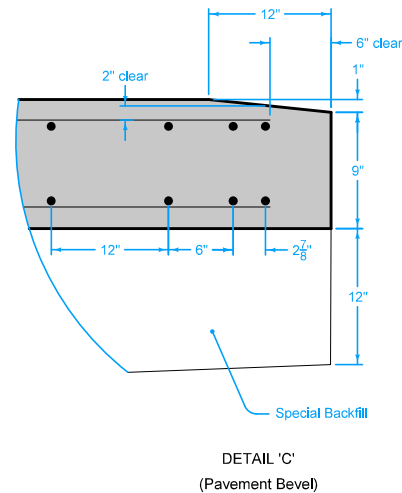
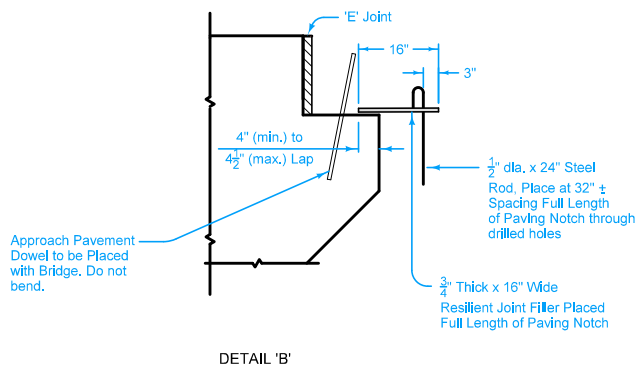
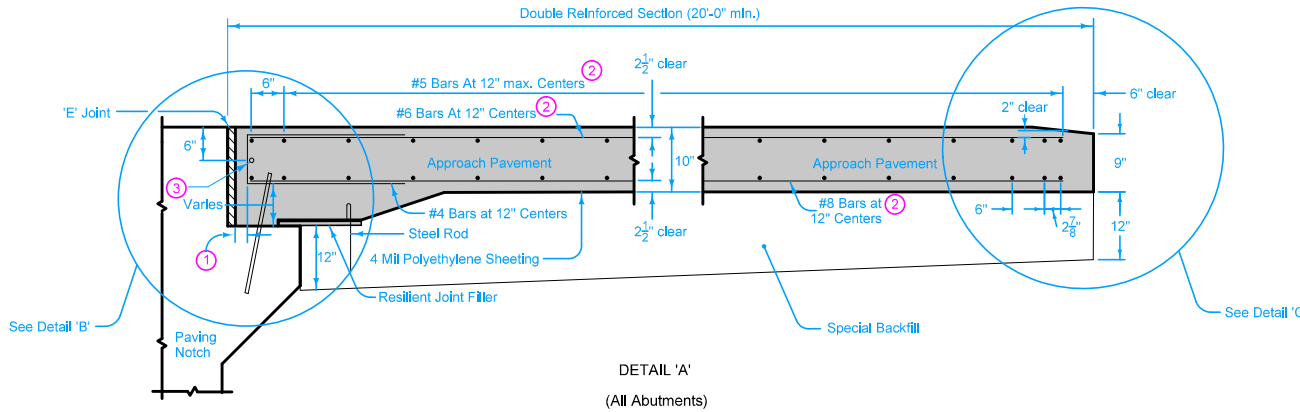


For joint details, refer to [PV-101](#).

For curb details, see Detail 'F'.


All transverse bars are #5.

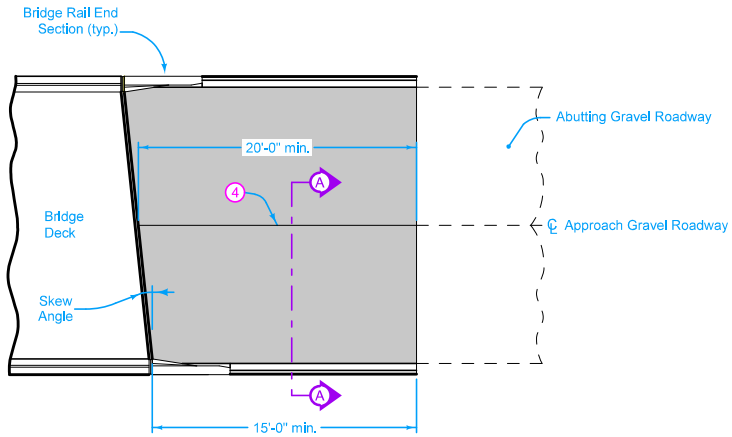
- ① 2" min. to 2 1/2" max. clear to bent bar.
- ② Minimum lap length: #5 Bars - 38"
#6 Bars - 45"
#8 Bars - 59"
- ③ If bridge is skewed, place additional #5 bar parallel to skewed face.



Possible Contract Item:
Bridge Approach, BR-241

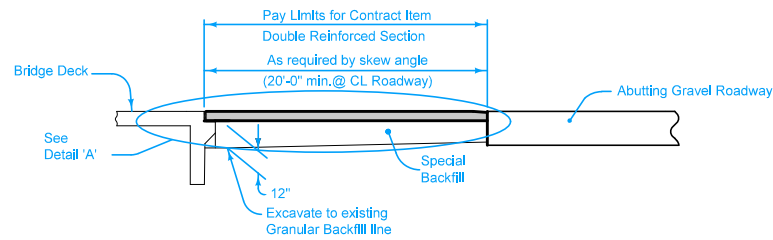
Possible Tabulation:
112-6

IOWA DOT	REVISION	
	New	04-18-17
STANDARD ROAD PLAN		BR-241
REVISIONS: New.		SHEET 1 of 3
 <small>APPROVED BY DESIGN METHODS ENGINEER</small>		
DOUBLE REINFORCED 10" APPROACH ON GRAVEL ROADS		

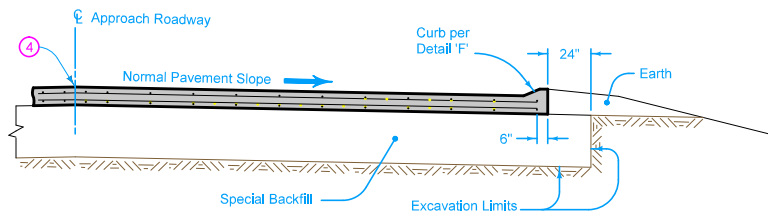


PLAN VIEW

④ Longitudinal Joint (PV-101):
 Single pour - Saw cut joint per Detail B.
 Two pours - Use 'KS-2' joint.

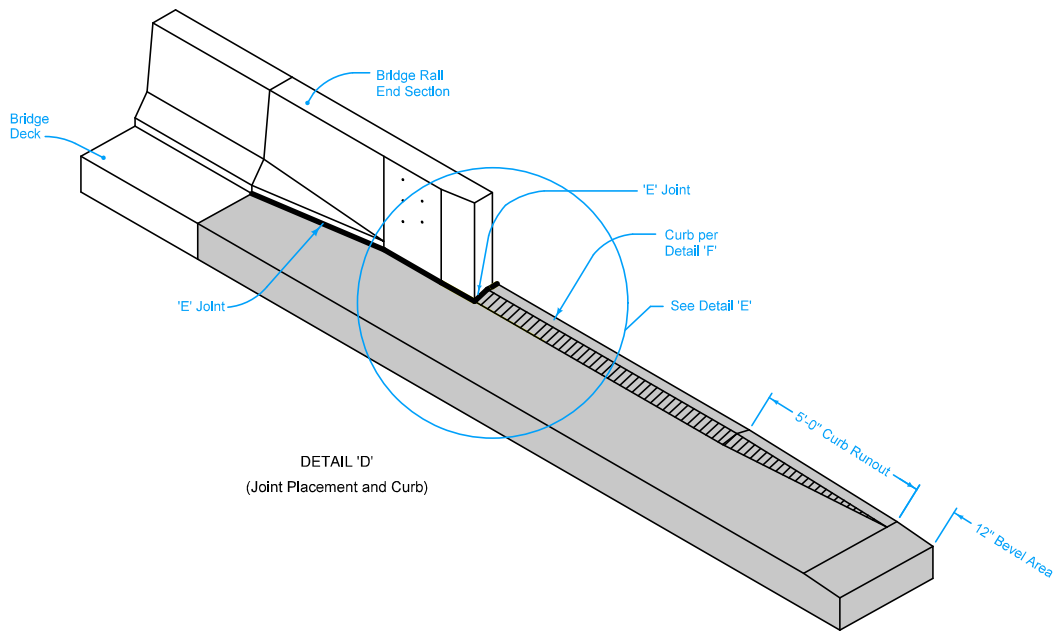


SECTION THRU CENTERLINE

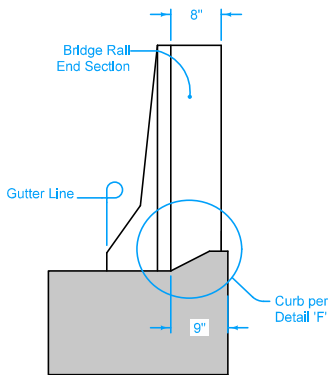


SECTION A-A

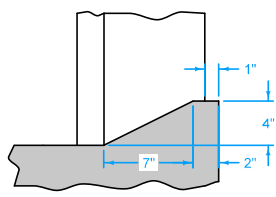
	REVISION
	New 04-18-17
STANDARD ROAD PLAN	BR-241
REVISIONS: New.	SHEET 2 of 3
 APPROVED BY DESIGN METHODS ENGINEER	
DOUBLE REINFORCED 10" APPROACH ON GRAVEL ROADS	



DETAIL 'D'
(Joint Placement and Curb)



DETAIL 'E'
(Back of Curb Placement)



DETAIL 'F'

	REVISION
	New 04-18-17
STANDARD ROAD PLAN	BR-241
REVISIONS: New.	SHEET 3 of 3
 APPROVED BY DESIGN METHODS ENGINEER	
DOUBLE REINFORCED 10" APPROACH ON GRAVEL ROADS	