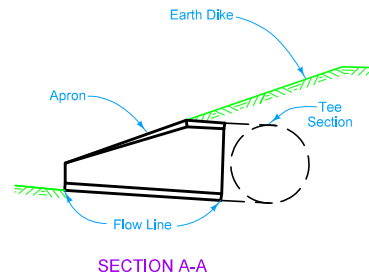
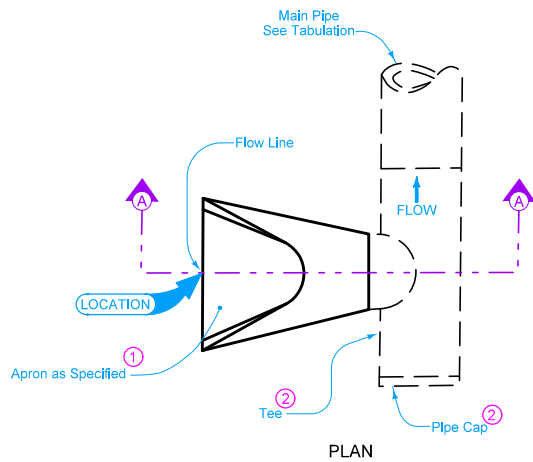



is of roadway, dike, survey, or other as detailed on the plans.

Use when specified. This type of inlet assembly may be substituted for the inlet apron shown on drawings of standard type drainage structures.

- ① Refer to the following:  
 DR-201 for circular concrete.  
 DR-202 for low clearance concrete.  
 DR-203 for circular metal.  
 DR-205 for circular concrete with end wall.  
 DR-206 for low clearance concrete with end wall.
- ② See DR-142.



Possible Tabulation:  
104-3

<b>IOWA DOT</b>	REVISION	
	1	04-18-17
<b>STANDARD ROAD PLAN</b>		<b>DR-612</b>
		SHEET 1 of 1
<small>REVISIONS: Modified note 1 to include references to additional apron types.</small>		
 <small>APPROVED BY DESIGN METHODS ENGINEER</small>		
<b>APRON TEE INLET</b>		