

The work of providing suitable earth surface for placement of slope protection is incidental to preparation of seedbed.

Ensure that ground surfaces adjacent to any channels are shaped to facilitate natural drainage into the protected area.

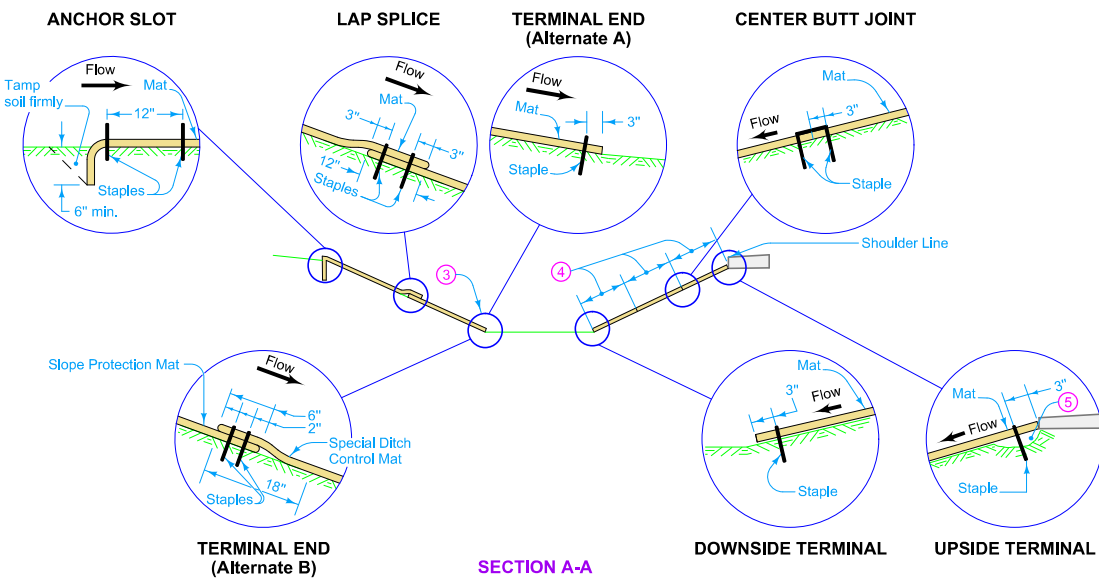
Excelsior mat for backslope protection is installed with strips placed approximately perpendicular to roadway. Locations for slope protection are shown on detail plans.

Excelsior mat for foreslope protection is installed with strips placed approximately parallel to roadway. The location, width, and number of strips are specified on project plans.

- ① Space top row of staples at 18 inch centers, bottom row at 36 inch centers, and all others at 24 inch centers. Approximately 30 staples required per square (100 sq. ft) of wood excelsior mat.
- ② Where erosive gullies have developed in backslope, fill with soil and compact prior to placement of mat.
- ③ Where excelsior mat is to be placed as Special Ditch Control, install slope protection to facilitate placement of the ditch control as indicated (Alternate B). Where there is no Special Ditch Control, install slope protection as shown (Alternate A).
- ④ 4 feet unless specified otherwise for foreslope protection.
- ⑤ If erosive fill has developed adjacent to shoulder material, fill with suitable soil and compact prior to placement of mat.

Possible Contract Item:
Slope Protection, Wood Excelsior Mat

Possible Tabulation:
100-22



 STANDARD ROAD PLAN	REVISION
	1 04-21-15
	EC-103
SHEET 1 of 1	
<small>REVISIONS: Removed language from general notes already in the Specifications. Modified drawings. Added Possible Contract Item and Possible Tabulation.</small>	
<i>Brian Smith</i> <small>APPROVED BY DESIGN METHODS ENGINEER</small>	
WOOD EXCELSIOR MAT FOR SLOPE PROTECTION	