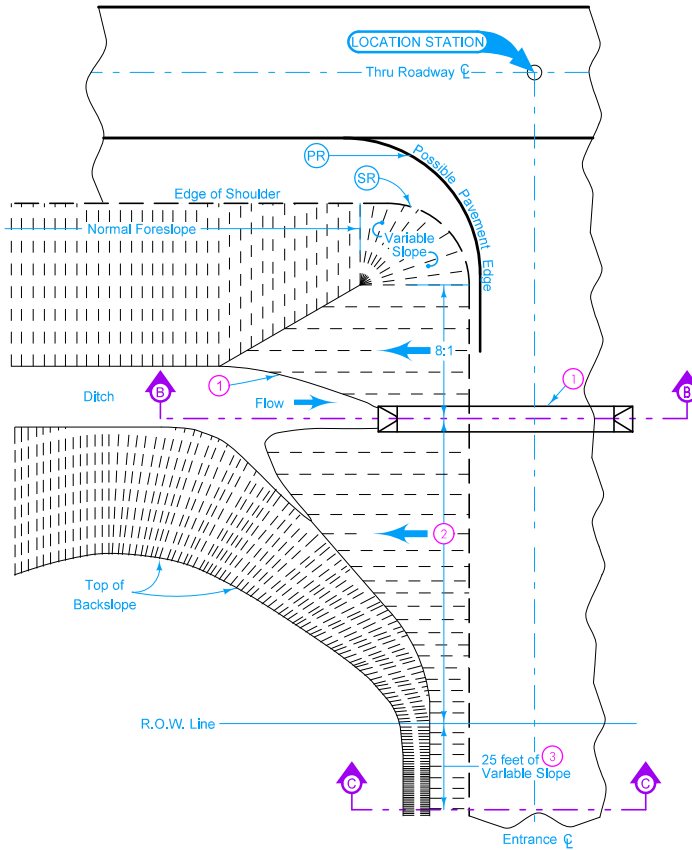
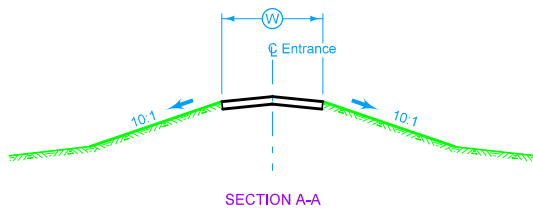


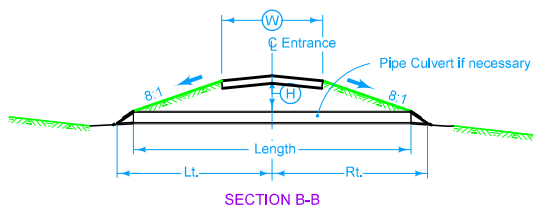
**TYPE B OR C ENTRANCE WITHOUT PIPE**



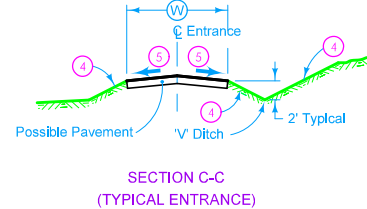
**TYPE B OR C ENTRANCE WITH PIPE**



**SECTION A-A**



**SECTION B-B**



**SECTION C-C (TYPICAL ENTRANCE)**

Smoothly shape and round surface and slopes of entrances where practical to provide minimal hazard to an out of control vehicle from through roadway.

Earthwork and material used for construction of entrances are included in estimate of quantities.

- 1 Locate entrance pipe culverts to coincide with the line of the toe of backslopes as shown. Some special shaping of ditch may be required to fit culvert. Refer to tabulation of entrance pipe culverts and cross sections for details of installation.
- 2 Smooth transition to 6:1 at ROW line. If foreslopes of existing entrance are 6:1 or flatter, transition to existing entrance foreslopes.
- 3 Smooth transition from 6:1 to existing foreslope if existing foreslope steeper than 6:1.
- 4 3:1 for new entrance. Existing slope for existing entrance.
- 5 3% for new entrance. Existing slope for existing entrance.

Possible Contract Items:  
Aprons, Unclassified Culvert, Unclassified Entrance Pipe  
Excavation, Class 10

Possible Tabulation:  
102-3

 <b>STANDARD ROAD PLAN</b>	REVISION
	1   10-20-15
	<b>EW-501</b>
SHEET 1 of 1	
REVISIONS: Replaced the DOT logo in the title block with the new version.	
 APPROVED BY DESIGN METHODS ENGINEER	
<b>RURAL ENTRANCE</b>	