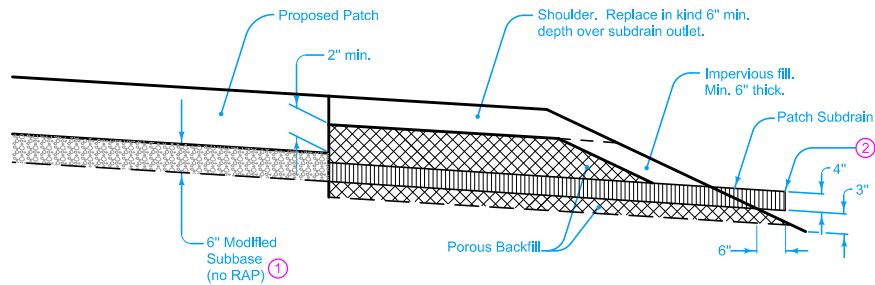


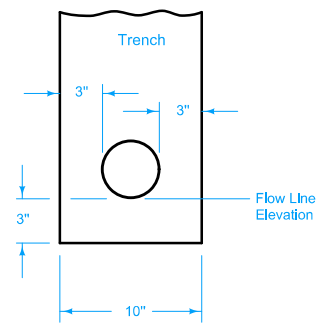
**MODIFIED SUBBASE AND SUBDRAIN**

IF LONGITUDINAL SUBDRAIN IS PRESENT OR IS TO BE PLACED



**MODIFIED SUBBASE AND SUBDRAIN**

WITHOUT LONGITUDINAL SUBDRAIN



**DRAIN PLACEMENT**

- ① 6 inches Modified Subbase (no RAP) if required by plan. When placed, extend Modified Subbase (no RAP) over longitudinal subdrain, if present.
- ② If longitudinal subdrain (shoulder) is not to be placed or if it is not present on side of roadway to be patched, then place Patch Subdrain at low end(s) of patch.

Possible Contract Items:  
Subbase (Patches)  
Patch Subdrain

Possible Tabulation:  
102-6C

<b>IOWA DOT</b>	REVISION	
	1	04-21-15
<b>STANDARD ROAD PLAN</b>		<b>PR-140</b>
		SHEET 1 of 1

REVISIONS: Removed references to rodent guards.

*Brian Smith*  
APPROVED BY DESIGN METHODS ENGINEER

**SUBBASE PATCHES**