

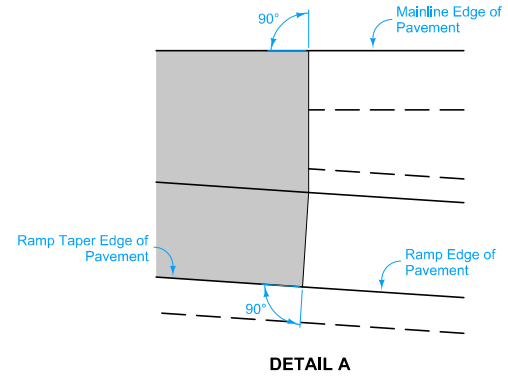
NOTE: The algebraic difference between profile grade for Ramp Base Line at (M) and relative profile grade of Mainline at (C) is 0.2%.

PROFILE

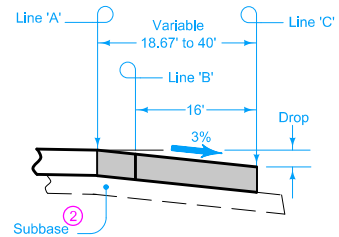
TABLE OF OFFSETS AND DROPS FOR 16' RAMP TAPER

DISTANCE FROM POINT (C) ALONG LINE 'A' (FL)		600	575	550	525	500	475	450	425	400	375	350	320	300	275	250	225	200	175	150	125	100	75	50	25	0		
From Line 'A' To Line 'B'	OFFSET (FL)												2.63	4.00	5.67	7.33	9.00	10.67	12.33	14.00	15.67	17.33	19.00	20.67	22.33	24.00		
	SLOPE (%)												← Constant 3.0% Slope →															
	DROP (FL)												0.08	0.12	0.17	0.22	0.27	0.32	0.37	0.42	0.47	0.52	0.57	0.62	0.67	0.72		
From Line 'B' To Line 'C'	OFFSET (FL)																											
	SLOPE (%)																											
	DROP (FL)																											
From Line 'A' To Line 'C'	OFFSET (FL)	0	1.67	3.33	5.00	6.67	8.33	10.00	11.67	13.33	15.00	16.67	0.48	0.48	0.48	0.48	0.48	0.48	0.48	0.48	0.48	0.48	0.48	0.48	0.48	0.48		
	SLOPE (%)		← Constant 3.0% Slope →																									
	DROP (FL)	0	0.05	0.10	0.15	0.20	0.25	0.30	0.35	0.40	0.45	0.50	0.56	0.60	0.65	0.70	0.75	0.80	0.85	0.90	0.95	1.00	1.05	1.10	1.15	1.20		

- Construct ramp exit pavement the same thickness as mainline pavement.
- Ramp exit pavement shown by shaded area is 1332 square yards.
- For joint details, see PV-101.
- For header construction details at the beginning of taper, see Typical 7101 or Typical 7102.
 - Construct subbase for ramp exit pavement the same thickness as mainline subbase.



DETAIL A



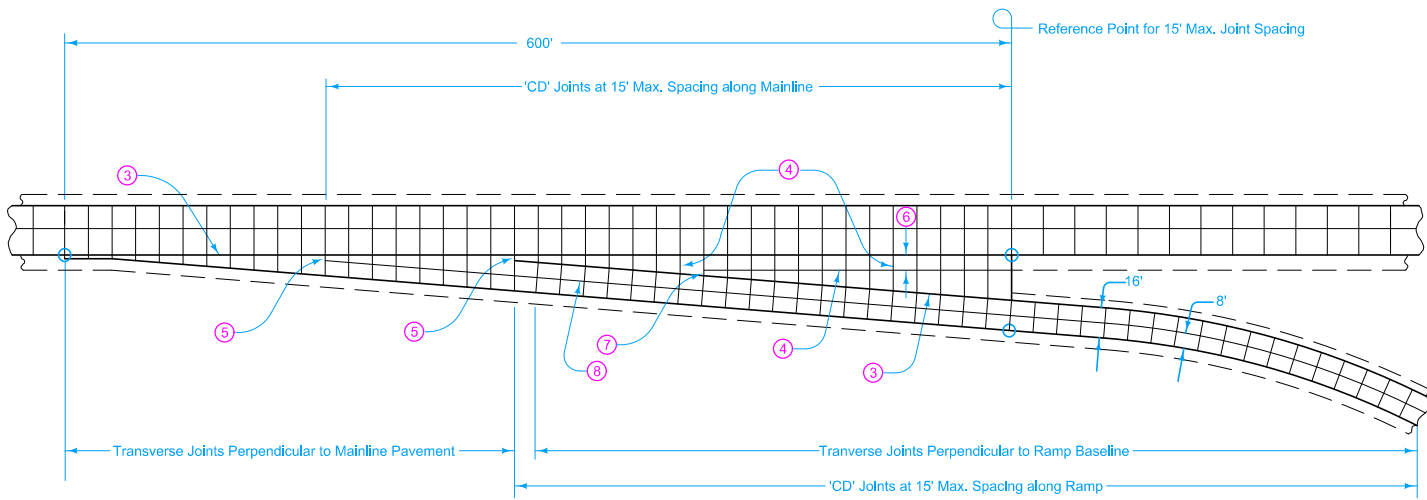
SECTION A-A

TABLE OF SHOULDER TRANSITION LENGTHS

W	Shoulder Width beyond Edge of Mainline Pavement		
	8'	10'	12'
12'	NA	60'	90'



NOTE: W_i is the width of the outside lane to the Edge of Pavement.

 STANDARD ROAD PLAN	REVISION 7 04-21-20
	PV-410
	SHEET 1 of 2
REVISIONS: Removed INTERIM from the standard.	
 <small>APPROVED BY DESIGN METHODS ENGINEER</small>	
DECELERATION TAPER FOR 16' RAMP	



- ③ 'BT-2' or 'KT-2' Joint.
- ④ 'C' Joint.
- ⑤ 'B' Joint, 2' minimum, 4' maximum.
- ⑥ 10' minimum or equal to mainline shoulder width.
- ⑦ 'B' or 'C' Joint, 2' minimum, 4' maximum.
- ⑧ 'L-2' Joint.

16' EXIT RAMP

 STANDARD ROAD PLAN	REVISION 7 04-21-20
	PV-410 SHEET 2 of 2
REVISIONS: Removed INTERIM from the standard.	
 APPROVED BY DESIGN METHODS ENGINEER	
DECELERATION TAPER FOR 16' RAMP	