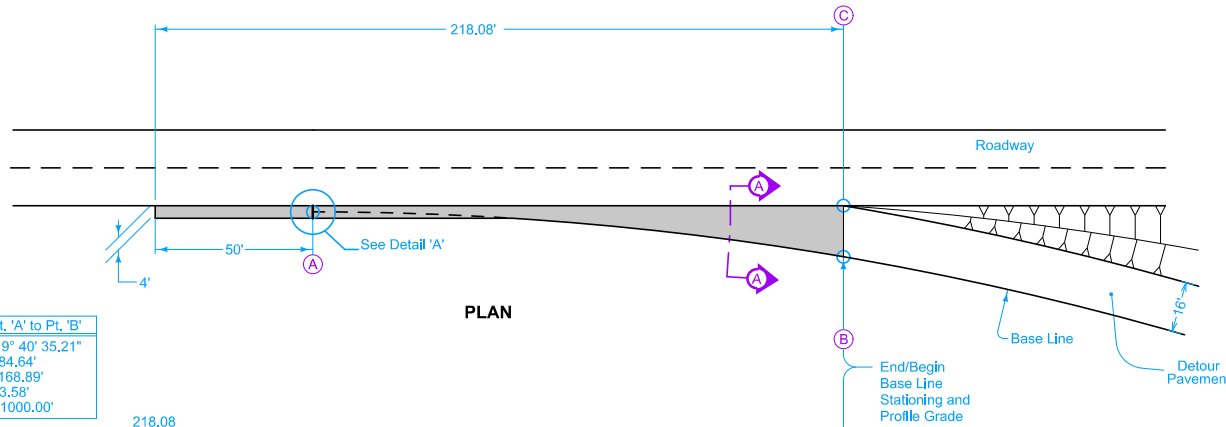


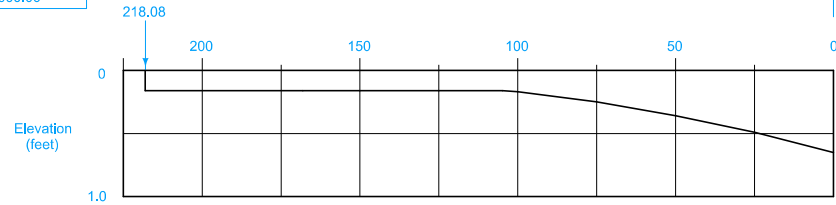
Construct detour connection pavement and subbase the same thickness as detour pavement and subbase.

Detour connection pavement shown by shaded area is 147.89 square yards.

For joint details, see PV-101



Pt. 'A' to Pt. 'B'	
$\Delta = 9^\circ 40' 35.21''$	
$T = 84.64'$	
$L = 168.89'$	
$E = 3.58'$	
$R = 1000.00'$	

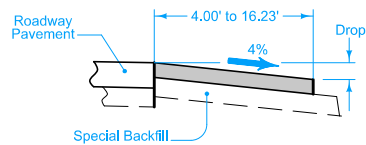


NOTE: The algebraic difference between profile grade for Ramp Base Line at (B) and relative profile grade of Mainline at (C) is 0.63%.

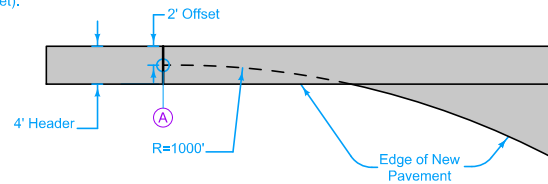
PROFILE

TABLE OF OFFSETS AND DROPS FOR DETOUR PAVEMENT											
DISTANCE (Ft.)	218.08	200	175	150	125	104.87	100	75	50	25	0
OFFSET (Ft.)	4.00	4.00	4.00	4.00	4.00	4.00	4.32	6.34	9.00	12.29	16.23
DROP (Ft.)	0.16	0.16	0.16	0.16	0.16	0.16	0.17	0.25	0.36	0.49	0.65

NOTE: The elevations are established by a constant 4% slope across the appropriate detour widths based on a radius of 1000'. Drop = (0.04) x (Offset).



SECTION A-A



DETAIL 'A'

Possible Contract Items:
Detour Pavement
Special Backfill

 STANDARD ROAD PLAN	REVISION		
	<table border="1" style="width: 100%; border-collapse: collapse;"> <tr> <td style="width: 50px; text-align: center;">1</td> <td style="width: 50px; text-align: center;">10-21-14</td> </tr> </table>	1	10-21-14
	1	10-21-14	
PV-418			
SHEET 1 of 1			
REVISIONS: Changed "ramp entrance" to "detour connection" and "mainline" to "detour". Removed circle notes. Added 50' header and Detail 'A'.			
 APPROVED BY DESIGN METHODS ENGINEER			
ONE-LANE DETOUR CONNECTION			