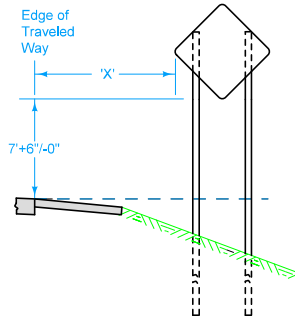
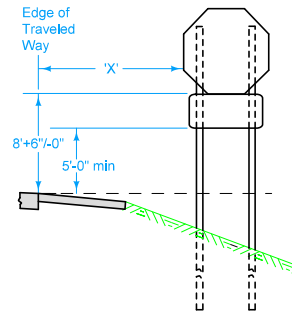


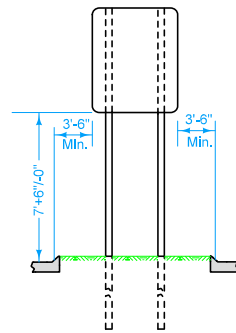
FRONT VIEW  
ROUTE DIRECTION MARKER



FRONT VIEW  
SIGN  
TYPE 1 INSTALLATION



FRONT VIEW  
SIGN WITH  
ADVISORY PLATE



FRONT VIEW  
SIGN LOCATION  
Type 3 Installation

Type 3 installation is intended to show the requirements for a Type 'A' sign when installed in an island or median (where traffic passes on both sides of the sign) as well as for locations where the Type 'A' sign is installed adjacent to a curbed roadway (sign may be located on either side of a roadway as specified in project plans).

Final sign location will be at the discretion of the Engineer.

Use the Type 1 installation in any case except where:  
(A) Specified otherwise in the plans.  
(B) Directed otherwise by the Engineer.  
(C) A Type 3 installation is required due to location in an island or gore area.

Possible Contract Items:

- Remove and Reinstall Sign as per plan
- Wood Posts for Type A or B signs, 4in x 6in
- Perforated Square Steel tube Post (Anchor Series)
- Type A Signs, Sheet Aluminum
- Install Type A Sign

Possible Tabulations:

- 190-51
- 190-61
- 190-62
- 190-66

|   |                           |              |
|---|---------------------------|--------------|
| <b>IOWA DOT</b>   | REVISION                  |              |
|   | 1                         | 04-19-16     |
|   | <b>STANDARD ROAD PLAN</b> |              |
| <b>SI-101</b>   |                           | SHEET 1 of 1 |
| REVISIONS: Changed Lane Edge Line to 'Edge of Traveled Way', Replaced 'Y' with numerical value including tolerance, Removed advisory sign from middle view. |                           |              |

*Brian Smith*  
APPROVED BY DESIGN METHODS ENGINEER

**LOCATIONS-  
TYPE 'A' SIGNS**