

See Sheets 2 and 4 for Details

See Sheets 3 and 4 for Details

### OVERVIEW OF CROSSOVER

Place Two-Way Traffic symbol and DO NOT PASS signs alternately on both sides of the roadway at a maximum of one-half mile intervals for both directions of travel. Always have signs in sight of motorists.



When the Average Daily Traffic (ADT) exceeds 20,000 vehicles per day or when a traffic queue extends beyond the advanced signing, place RIGHT/LEFT LANE CLOSED 4 MILES and RIGHT/LEFT LANE CLOSED 2 MILES signs (W20-5) on both sides of the roadway 4 miles and 2 miles in advance of the lane closure, respectively, as appropriate.

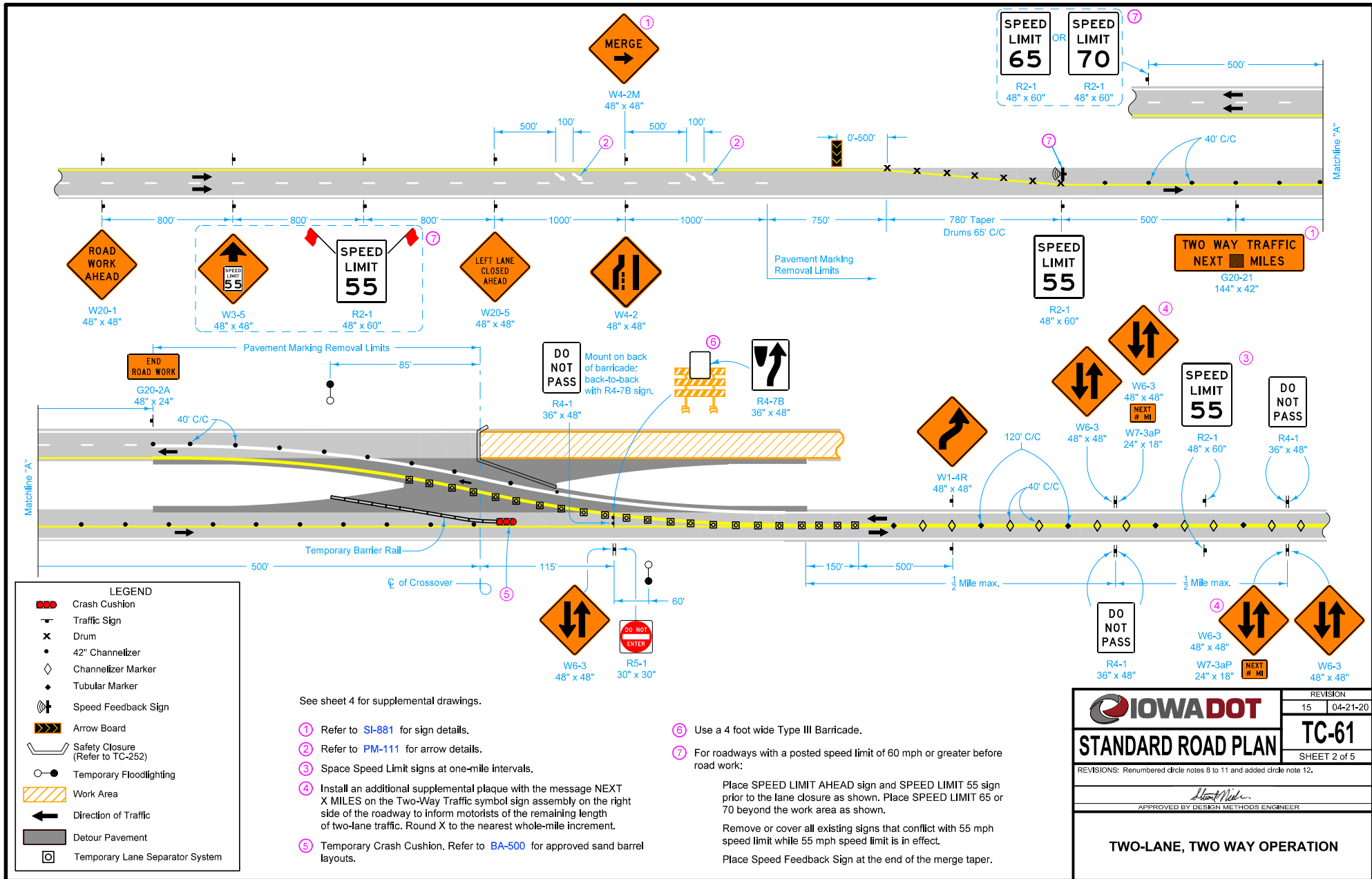
**Possible Contract Items:**

- |                             |                                 |
|-----------------------------|---------------------------------|
| Painted Symbols and Legends | Temporary Barrier Rail          |
| Pavement Marking Items      | Temporary Crash Cushions        |
| Pavement Marking Removed    | Temporary Floodlighting         |
| Safety Closures             | Temporary Lane Separator System |
|                             | Traffic Control                 |

**Possible Tabulations:**

108-13A, 108-22, 108-27, 108-29, 108-30, 108-33, 108-35

 <b>STANDARD ROAD PLAN</b>	REVISION 15   04-21-20
	TC-61 SHEET 1 of 5
REVISIONS: Renumbered circle notes 8 to 11 and added circle note 12.	
 <small>APPROVED BY DESIGN METHODS ENGINEER</small>	
TWO-LANE, TWO WAY OPERATION	



**LEGEND**

- Crash Cushion
- Traffic Sign
- Drum
- 42" Channelizer
- Channelizer Marker
- Tubular Marker
- Speed Feedback Sign
- Arrow Board
- Safety Closure (Refer to TC-252)
- Temporary Floodlighting
- Work Area
- Direction of Traffic
- Detour Pavement
- Temporary Lane Separator System

See sheet 4 for supplemental drawings.

- ① Refer to [SI-881](#) for sign details.
- ② Refer to [PM-111](#) for arrow details.
- ③ Space Speed Limit signs at one-mile intervals.
- ④ Install an additional supplemental plaque with the message NEXT X MILES on the Two-Way Traffic symbol sign assembly on the right side of the roadway to inform motorists of the remaining length of two-lane traffic. Round X to the nearest whole-mile increment.
- ⑤ Temporary Crash Cushion, Refer to [BA-500](#) for approved sand barrel layouts.

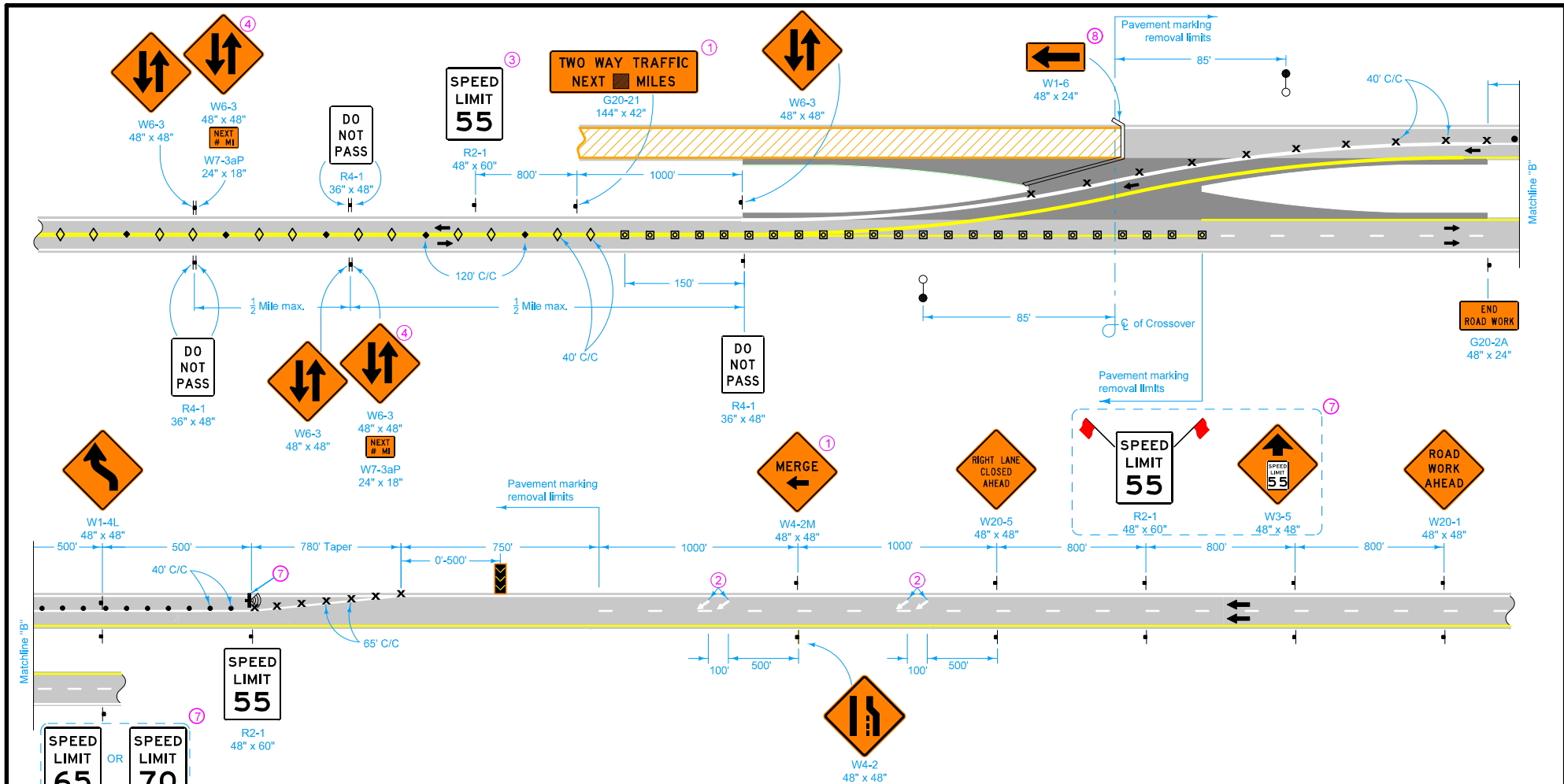
- ⑥ Use a 4 foot wide Type III Barricade.
- ⑦ For roadways with a posted speed limit of 60 mph or greater before road work:

Place SPEED LIMIT AHEAD sign and SPEED LIMIT 55 sign prior to the lane closure as shown. Place SPEED LIMIT 65 or 70 beyond the work area as shown.

Remove or cover all existing signs that conflict with 55 mph speed limit while 55 mph speed limit is in effect.

Place Speed Feedback Sign at the end of the merge taper.

	REVISION 15 04-21-20
	SHEET 2 of 5
STANDARD ROAD PLAN	TC-61
REVISIONS: Renumbered circle notes 8 to 11 and added circle note 12.	
 <small>APPROVED BY DESIGN METHODS ENGINEER</small>	
TWO-LANE, TWO WAY OPERATION	



Matchline "B"

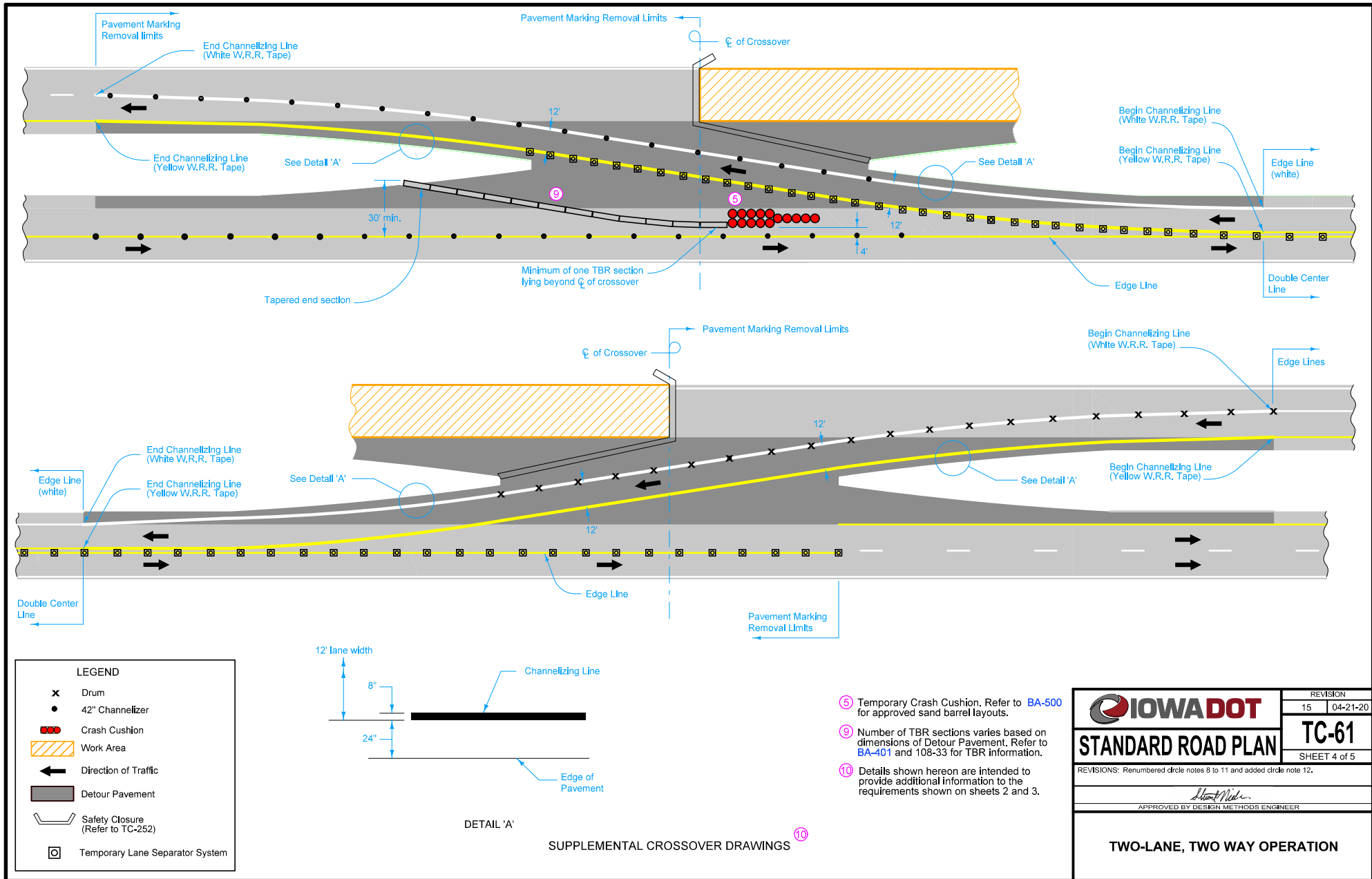
Matchline "B"

LEGEND	
	Traffic Sign
	Drum
	42" Channelizer
	Channelizer Marker
	Tubular Marker
	Temporary Lane Separator System
	Speed Feedback Sign
	Arrow Board
	Safety Closure (Refer to TC-252)
	Temporary Floodlighting
	Work Area
	Direction of Traffic
	Detour Pavement

See sheet 4 for supplemental drawings.

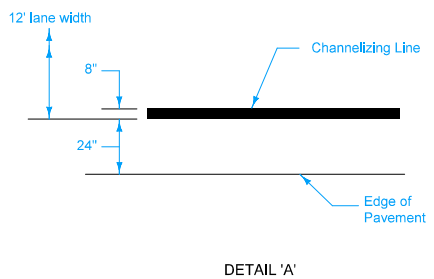
- ① Refer to **SI-881** for sign details.
- ② Refer to **PM-111** for arrow details.
- ③ Space Speed Limit signs at one-mile intervals.
- ④ Install an additional supplemental plaque with the message **NEXT X MILES** on the Two-Way Traffic symbol sign assembly on the right side of the roadway to inform motorists of the remaining length of two-lane traffic. Round X to the nearest whole-mile increment.
- ⑦ For roadways with a posted speed limit of 60 mph or greater before road work:
  - Place **SPEED LIMIT AHEAD** sign and **SPEED LIMIT 55** sign prior to the lane closure as shown. Place **SPEED LIMIT 65** or **70** beyond the work area as shown.
  - Remove or cover all existing signs that conflict with 55 mph speed limit while 55 mph speed limit is in effect.
  - Place Speed Feedback Sign at the end of the merge taper.
- ⑧ Add below R11-2 already included in Safety Closure.

 <b>STANDARD ROAD PLAN</b>	REVISION 15 04-21-20
	<b>TC-61</b>
	SHEET 3 of 5
REVISIONS: Renumbered circle notes 8 to 11 and added circle note 12.	
 APPROVED BY DESIGN METHODS ENGINEER	
<b>TWO-LANE, TWO WAY OPERATION</b>	



**LEGEND**

- ✕ Drum
- 42" Channelizer
- Crash Cushion
- ▨ Work Area
- ← Direction of Traffic
- ▬ Detour Pavement
- ⌒ Safety Closure (Refer to TC-252)
- ⊠ Temporary Lane Separator System

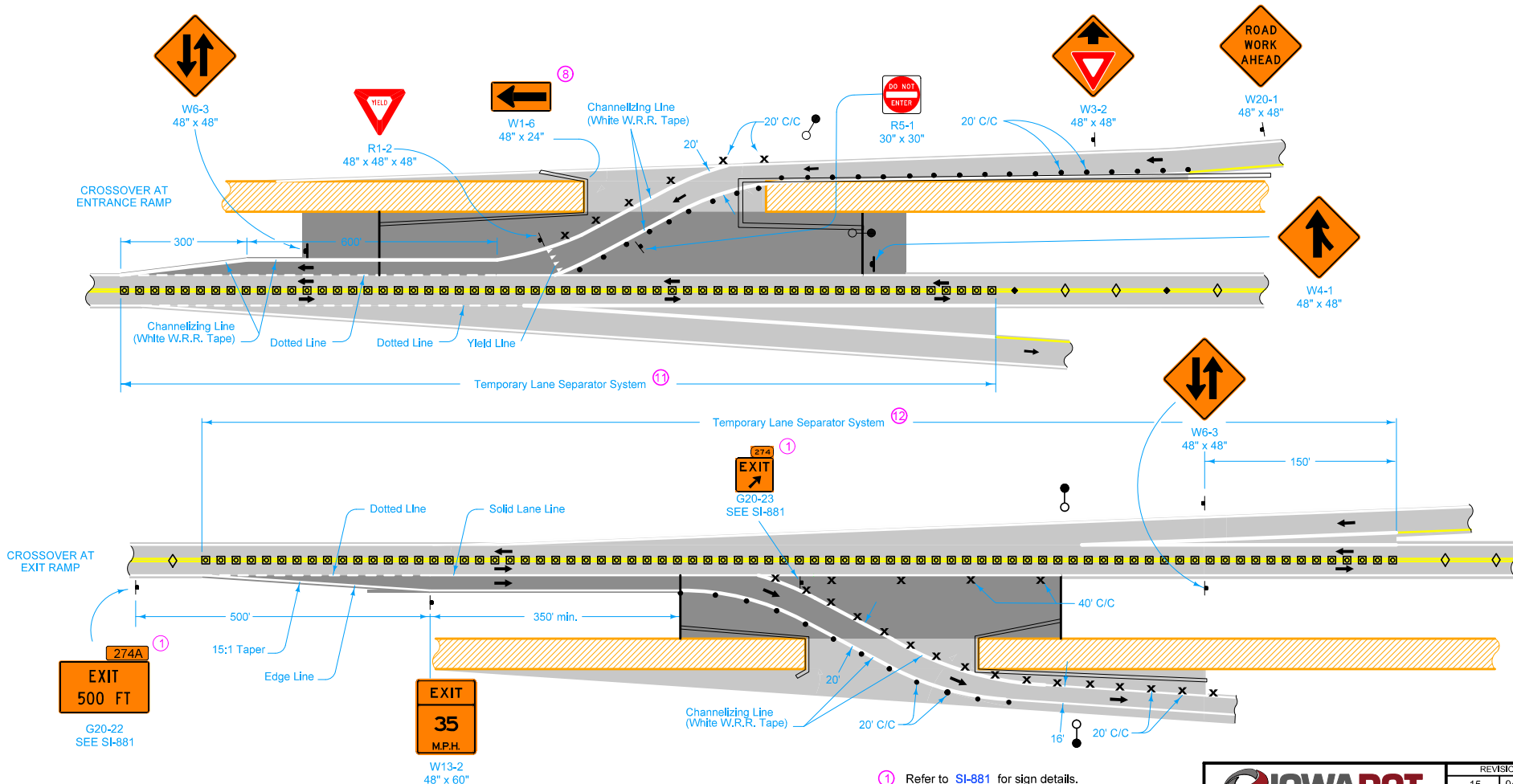


DETAIL 'A'  
SUPPLEMENTAL CROSSOVER DRAWINGS <sup>10</sup>

- ⑤ Temporary Crash Cushion. Refer to BA-500 for approved sand barrel layouts.
- ⑨ Number of TBR sections varies based on dimensions of Detour Pavement. Refer to BA-401 and 108-33 for TBR information.
- ⑩ Details shown hereon are intended to provide additional information to the requirements shown on sheets 2 and 3.

 <b>STANDARD ROAD PLAN</b>	REVISION 15 04-21-20
	<b>TC-61</b>
SHEET 4 of 5	
REVISIONS: Renumbered circle notes 8 to 11 and added circle note 12.	
 APPROVED BY DESIGN METHODS ENGINEER	
TWO-LANE, TWO WAY OPERATION	

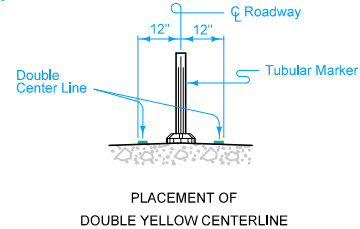
RAMP LOCATIONS



274A  
EXIT  
500 FT  
G20-22  
SEE SI-881

EXIT  
35  
M.P.H.  
W13-2  
48" x 60"

LEGEND	
↑	Traffic Sign
•	42" Channelizer
x	Drum
◇	Channelizer Marker
◆	Tubular Marker
○●	Temporary Floodlighting
⊠	Temporary Lane Separator System
▨	Work Area
■	Detour Pavement
←	Direction of Traffic
⌒	Safety Closure (Refer to TC-252)



- ① Refer to SI-881 for sign details.
- ⑧ Add below R11-2 already included in Safety Closure.
- ⑪ Place TLSS from start of ramp gore to end of temporary ramp crossover.
- ⑫ Place TLSS from start of full width decel lane to end of ramp gore.

<p><b>IOWA DOT</b></p> <p><b>STANDARD ROAD PLAN</b></p> <p>REVISIONS: Renumbered circle notes 8 to 11 and added circle note 12.</p> <p>APPROVED BY DESIGN METHODS ENGINEER</p> <p><i>Scott Miller</i></p> <p><b>TWO-LANE, TWO WAY OPERATION</b></p>	REVISION 15 04-21-20
	<b>TC-61</b> SHEET 5 of 5