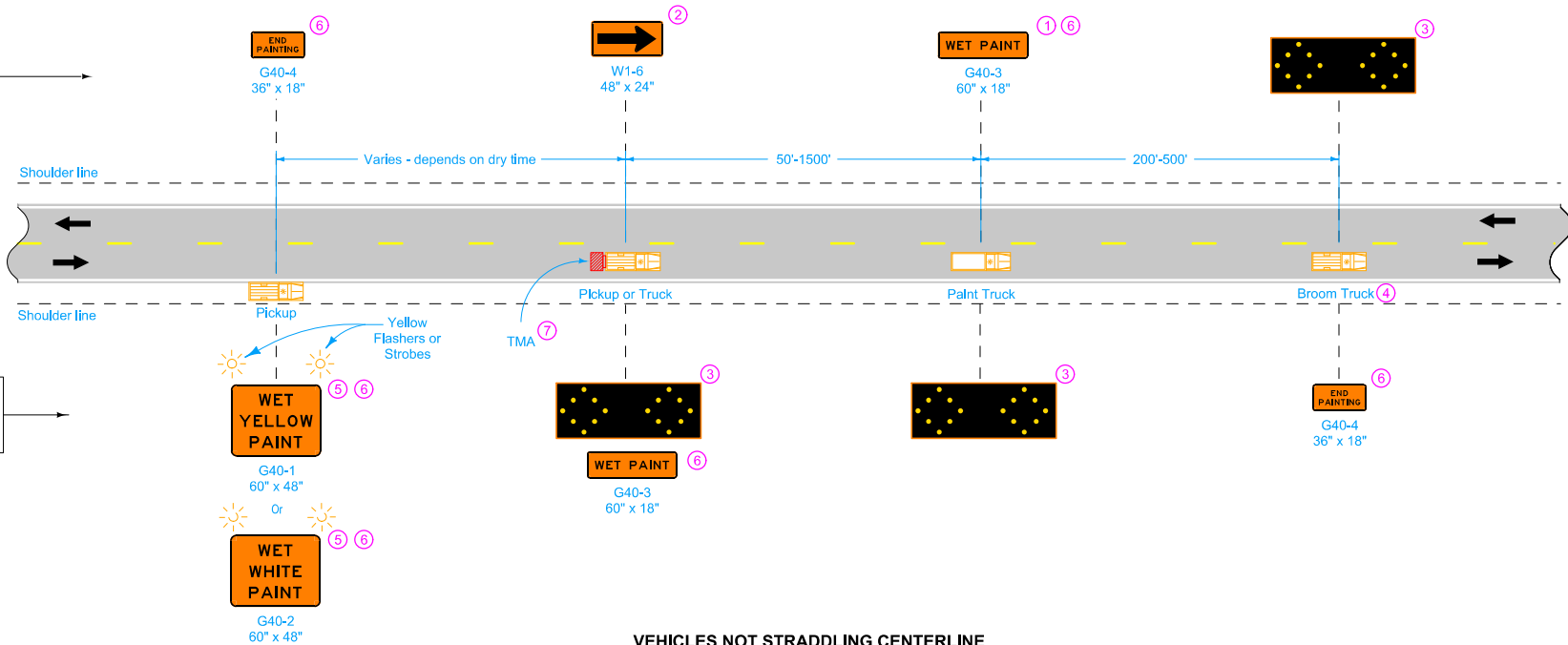


SIGNS FACING OPPOSING TRAFFIC

SIGNS FACING TRAFFIC APPROACHING FROM THE REAR



VEHICLES NOT STRADDLING CENTERLINE

This layout may be used when painting edgeline or centerline markings.

Equip all vehicles with an amber revolving light or amber strobe light.

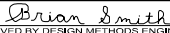
Possible Contract Item:
Traffic Control

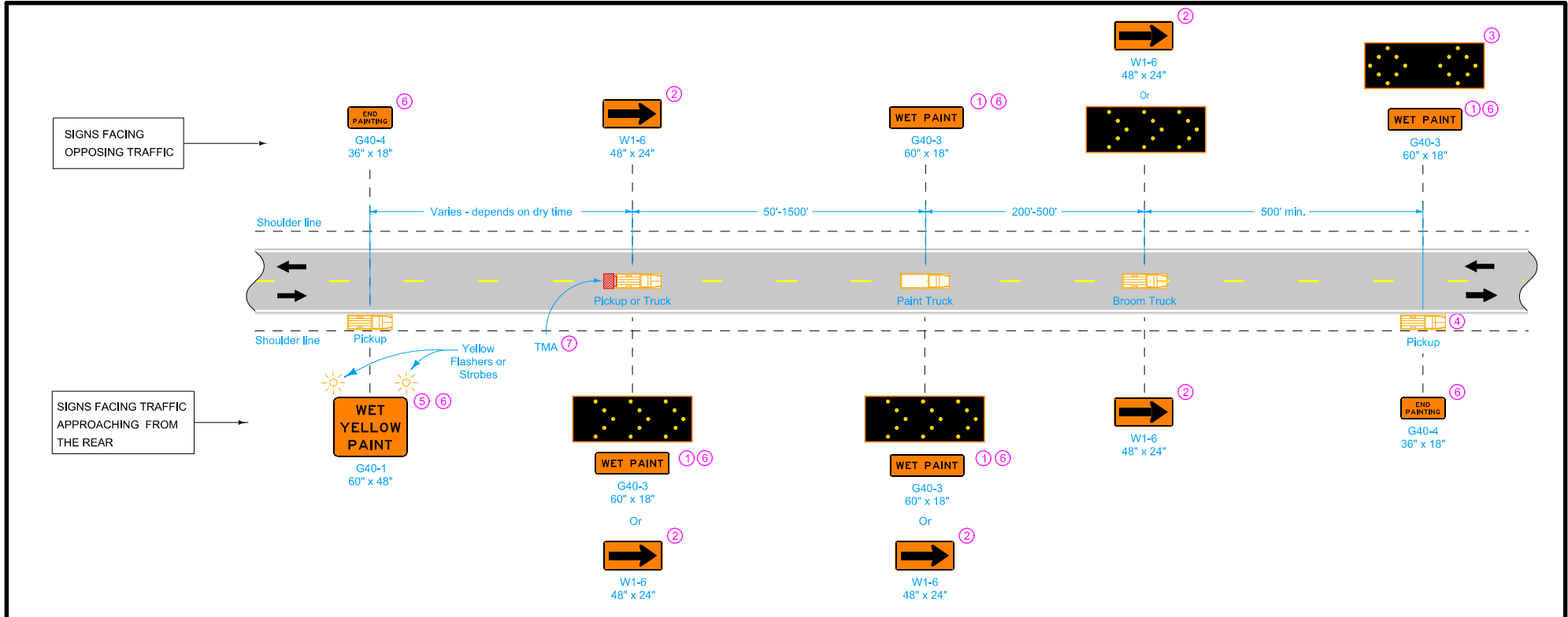
- ① Use this sign when painting centerline markings.
- ② Optional Fluorescent Yellow Green (FYG) sign background may be used.
- ③ This arrow board may be operated in a four-corner caution mode.
- ④ Move this vehicle to the shoulder to accommodate passing traffic.
- ⑤ A vehicle mounted Portable Dynamic Message Sign (PDMS) may be used in lieu of this sign.
- ⑥ Refer to SI-881 for sign details.
- ⑦ TMA required for speed limits of 55 mph or greater and ADT greater than 3,000.

LEGEND

← Direction of Traffic

▨ Truck-Mounted Attenuator (TMA)

IOWA DOT	REVISION	
	7	10-17-17
STANDARD ROAD PLAN		TC-233
REVISIONS: Added Circle Note 7.		SHEET 1 of 2
 <small>APPROVED BY DESIGN METHODS ENGINEER</small>		
PAVEMENT MARKING OPERATIONS		
TWO-LANE		



SIGNS FACING OPPOSING TRAFFIC

SIGNS FACING TRAFFIC APPROACHING FROM THE REAR

LEGEND

← Direction of Traffic

▨ Truck-Mounted Attenuator (TMA)

VEHICLES STRADDLING CENTERLINE

- ① Use this sign when painting centerline markings.
- ② Optional Fluorescent Yellow Green (FYG) sign background may be used.
- ③ This arrow board may be operated in a four-corner caution mode.
- ④ Move this vehicle to the shoulder to accommodate passing traffic.
- ⑤ A vehicle mounted Portable Dynamic Message Sign (PDMS) may be used in lieu of this sign.
- ⑥ Refer to SI-881 for sign details.
- ⑦ TMA required for speed limits of 55 mph or greater and ADT greater than 3,000.

	REVISION
	7 10-17-17
STANDARD ROAD PLAN	TC-233
	SHEET 2 of 2
<small>REVISIONS: Added Circle Note 7.</small>	
 <small>APPROVED BY DESIGN METHODS ENGINEER</small>	
PAVEMENT MARKING OPERATIONS TWO-LANE	