

| SPEED LIMIT (mph) | D | E | M | T |
|-------------------|-----|------|------|------|
| 45 - 50 | 45' | 300' | 630' | 100' |
| 55 - 60 | 55' | 400' | 770' | 100' |
| 65 - 70 | 65' | 500' | 910' | 100' |

| LEGEND | |
|--------|-------------------------|
| | Traffic Sign |
| | Drum |
| | 42" Channelizer |
| | Speed Feedback Sign |
| | Arrow Board |
| | Temporary Crash Cushion |
| | Work Area |
| | Direction of Traffic |

When the Average Daily Traffic (ADT) exceeds 20,000 vehicles per day or when a traffic queue extends beyond the advanced signed, place RIGHT LANE CLOSED 4 MILES and RIGHT LANE CLOSED 2 MILES signs (W20-5) on both sides of the roadway 4 miles and 2 miles in advance of the lane closure, respectively.

Place Concrete Barrier Markers at 10 ft C/C on bridge rail.

① For roadways with a posted speed limit of 60 mph or greater before road work:

Place SPEED LIMIT AHEAD sign and SPEED LIMIT 55 sign prior to the lane closure as shown. Place SPEED LIMIT 65 or 70 beyond the work area as shown.

For traffic control zones lasting more than 4 hours, place a Speed Feedback Sign at the end of the merge taper.

② Refer to SI-881 for sign details.

③ For lanes closed to traffic, place two drums every 1000 feet. For full depth excavations in a closed lane, place two drums in front of each location. Additional drums need not be placed for full depth excavations spaced closer than 150 feet.

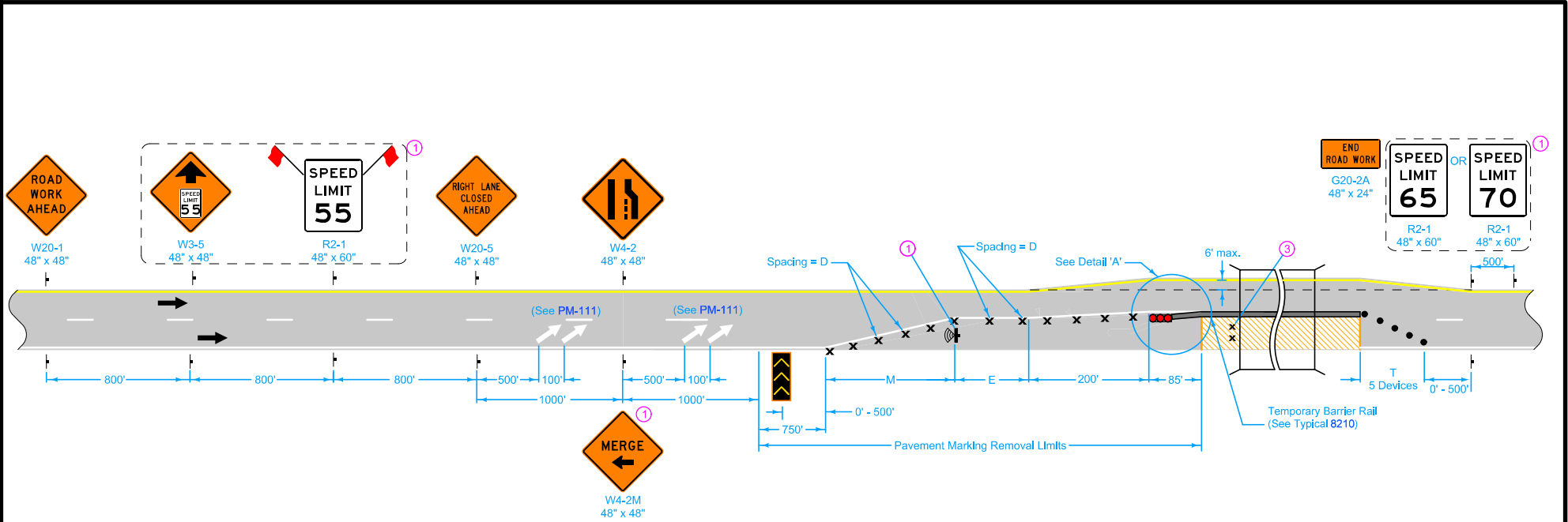
Possible Contract Items:

- Painted Symbols and Legends
- Pavement Marking Items
- Pavement Markings Removed
- Symbols and Legends Removed
- Temporary Barrier Rail
- Temporary Crash Cushions

Possible Tabulations:

- 108-22
- 108-29
- 108-30
- 108-33

| | |
|-------------------------------------|--------------|
| | REVISION |
| | 17 4-21-20 |
| STANDARD ROAD PLAN | TC-421 |
| REVISIONS: Modified circle note 1. | SHEET 1 of 2 |
| | |
| APPROVED BY DESIGN METHODS ENGINEER | |
| LANE CLOSURE WITH TBR | |



| LEGEND | |
|--------|-------------------------|
| ⊢ | Traffic Sign |
| × | Drum |
| • | 42" Channelizer |
| ⊢ | Speed Feedback Sign |
| ←←← | Arrow Board |
| ●●● | Temporary Crash Cushion |
| ▨ | Work Area |
| ← | Direction of Traffic |

- ① For roadways with a posted speed limit of 60 mph or greater before road work:
Place SPEED LIMIT AHEAD sign and SPEED LIMIT 55 sign prior to the lane closure as shown. Place SPEED LIMIT 65 or 70 beyond the work area as shown.

For traffic control zones lasting more than 4 hours, place a Speed Feedback Sign at the end of the merge taper.
- ② Refer to SI-881 for sign details.
- ③ For lanes closed to traffic, place two drums every 1000 feet. For full depth excavations in a closed lane, place two drums in front of each location. Additional drums need not be placed for full depth excavations spaced closer than 150 feet.

| | |
|--|--|
| STANDARD ROAD PLAN | <small>REVISION</small> 17 4-21-20 |
| | TC-421 <small>SHEET 2 of 2</small> |
| <small>REVISIONS: Modified circle note 1.</small> | |
| <small>APPROVED BY DESIGN METHODS ENGINEER</small> | |
| LANE CLOSURE WITH TBR | |