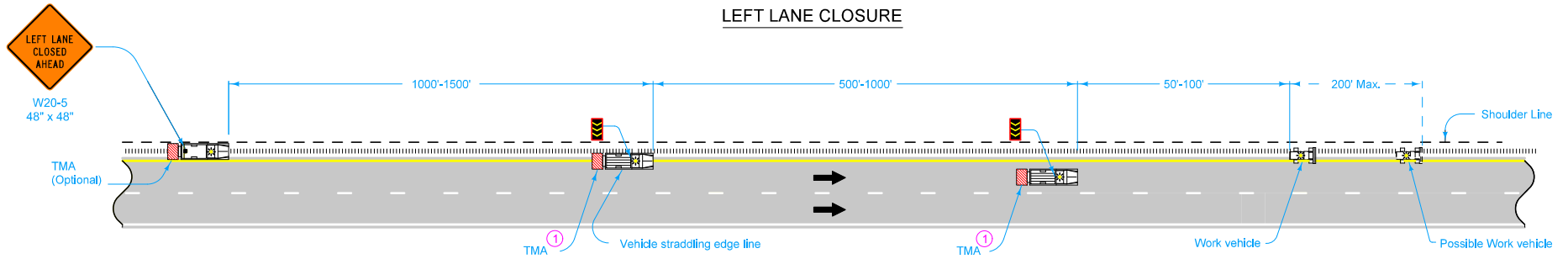
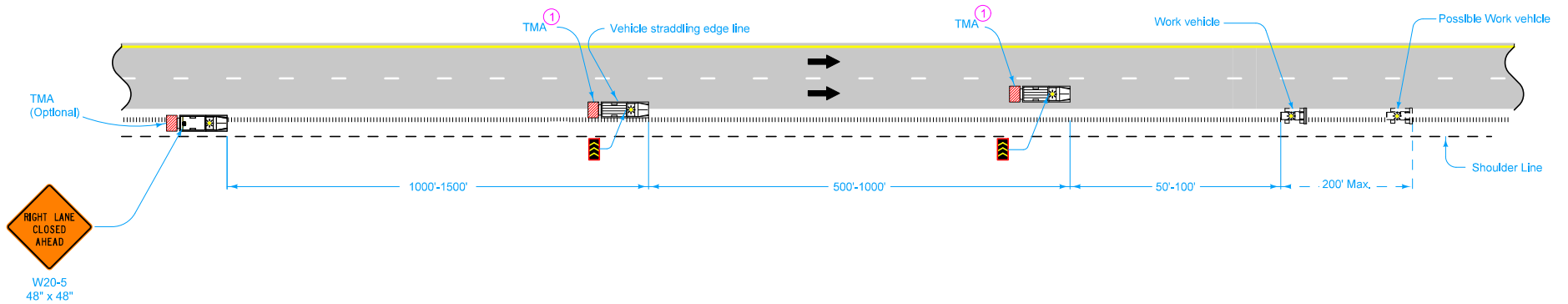


LEFT LANE CLOSURE



RIGHT LANE CLOSURE



LEGEND	
	Traffic Sign
	Arrow Board
	Truck Mounted Attenuator (TMA)
	Direction of Traffic

Equip all vehicles with an amber revolving light or amber strobe light.

When fog sealing the milled rumble strips, place a 48" X 48" FRESH OIL sign (W21-2) at the beginning of the work area. Place additional FRESH OIL signs after each intersection and periodically through the work area so that signs are no more than 2 miles apart.

Operators should adjust their spacing, as necessary, to keep adjacent vehicles within view.

① TMA required for speed limits of 55 mph or greater.

Possible Contract Item:
Traffic Control

	REVISION
	5 10-17-17
STANDARD ROAD PLAN	TC-432
	SHEET 1 of 1
<small>REVISIONS: Added Circle Note 1.</small>	
<small>APPROVED BY DESIGN METHODS ENGINEER</small>	
SHOULDER RUMBLE STRIP OPERATIONS	