

**OUTSIDE EDGELINE OR LANELINE - DIVIDED OR UNDIVIDED**

Equip all vehicles with an amber revolving light or amber strobe light.

Possible Contract Item:  
Traffic Control

- ① Optional Fluorescent Yellow Green (FYG) sign background may be used.
- ② This arrow board may be operated in a four-corner caution mode.
- ③ A vehicle mounted Portable Dynamic Message Sign (PDMS) may be used in lieu of this sign.
- ④ Refer to [SI-881](#) for sign details.
- ⑤ TMA required for speed limits of 55 mph or greater.

<b>IOWA DOT</b>	REVISION	
	7	10-17-17
<b>STANDARD ROAD PLAN</b>		<b>TC-433</b>
REVISIONS: Added Circle Note 5.		SHEET 1 of 3

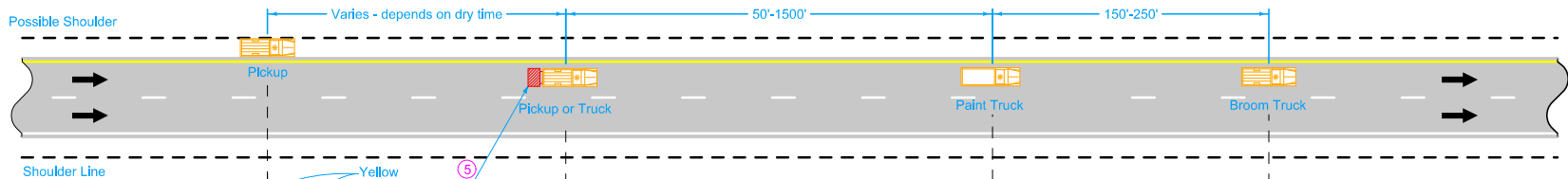
*Brian Smith*  
APPROVED BY DESIGN METHODS ENGINEER

**PAVEMENT MARKING OPERATIONS**

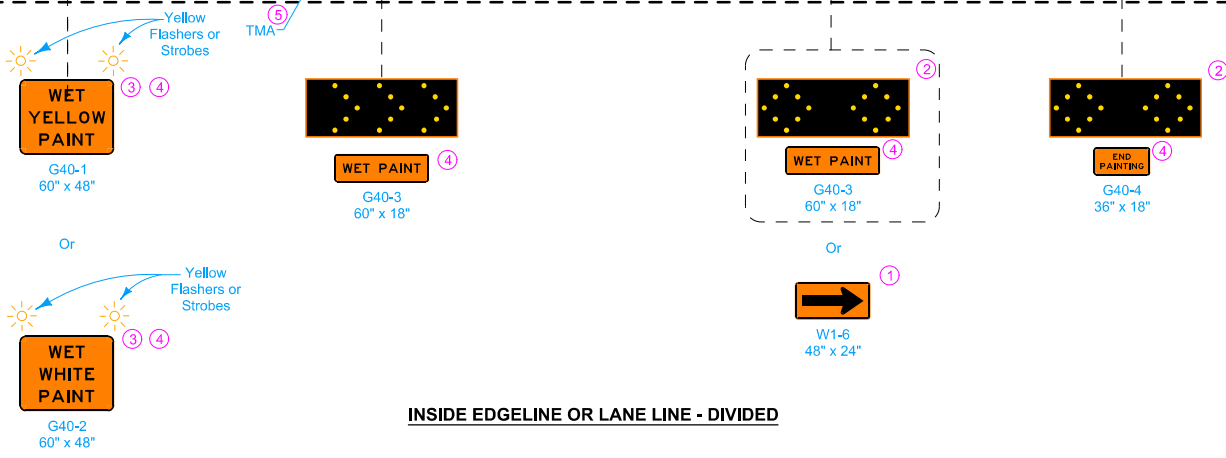
**LEGEND**

← Direction of Traffic

Truck-Mounted Attenuator (TMA)



SIGNS FACING TRAFFIC  
APPROACHING FROM  
THE REAR




**INSIDE EDGE LINE OR LANE LINE - DIVIDED**

**LEGEND**

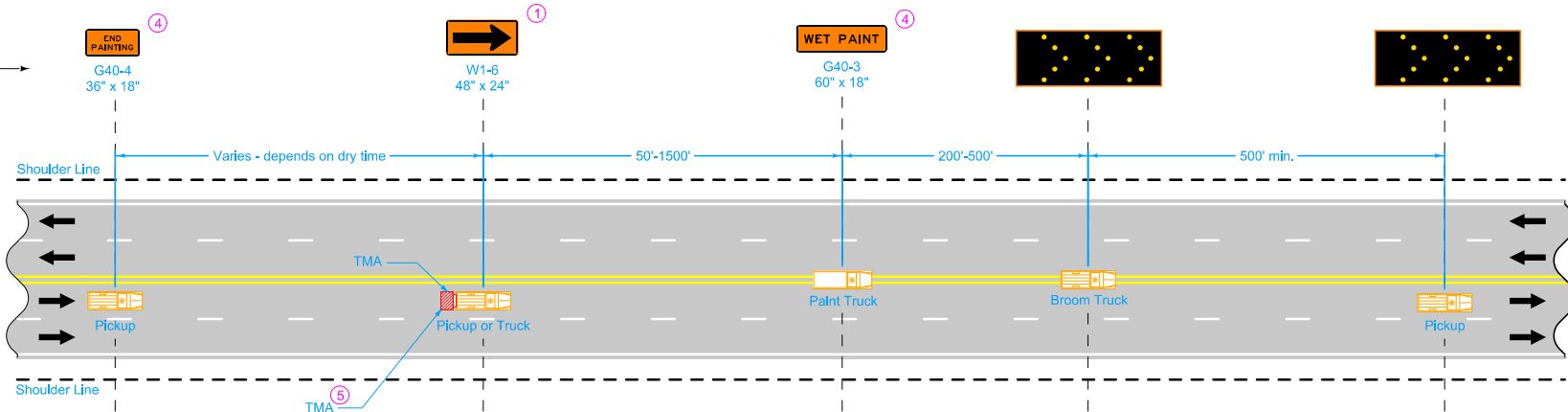
← Direction of Traffic

▨ Truck-Mounted Attenuator (TMA)

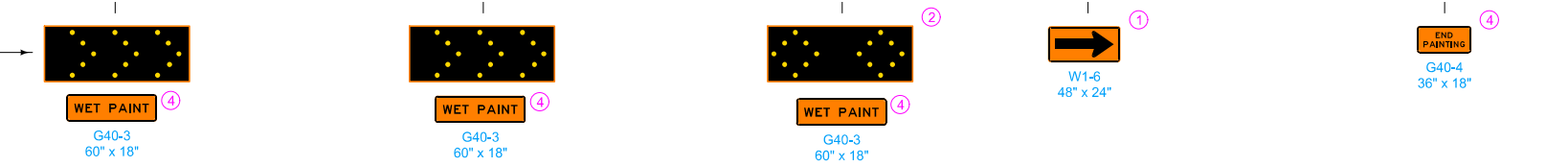
- ① Optional Fluorescent Yellow Green (FYG) sign background may be used.
- ② This arrow board may be operated in a four-corner caution mode.
- ③ A vehicle mounted Portable Dynamic Message Sign (PDMS) may be used in lieu of this sign.
- ④ Refer to [SI-881](#) for sign details.
- ⑤ TMA required for speed limits of 55 mph or greater.

<b>IOWA DOT</b>	REVISION	
	7	10-17-17
<b>STANDARD ROAD PLAN</b>		<b>TC-433</b>
REVISIONS: Added Circle Note 5.		SHEET 2 of 3
 APPROVED BY DESIGN METHODS ENGINEER		
<b>PAVEMENT MARKING OPERATIONS</b>		

SIGNS FACING  
OPPOSING TRAFFIC



SIGNS FACING TRAFFIC  
APPROACHING FROM  
THE REAR



**CENTERLINE - UNDIVIDED ONLY**

**LEGEND**

← Direction of Traffic

▨ Truck-Mounted Attenuator (TMA)

- ① Optional Fluorescent Yellow Green (FYG) sign background may be used.
- ② This arrow board may be operated in a four-corner caution mode.
- ④ Refer to [SI-881](#) for sign details.
- ⑤ TMA required for speed limits of 55 mph or greater.

	REVISION
	7 10-17-17
<b>STANDARD ROAD PLAN</b>	<b>TC-433</b>
	SHEET 3 of 3
<small>REVISIONS: Added Circle Note 5.</small>	
<small>APPROVED BY DESIGN METHODS ENGINEER</small>	
<b>PAVEMENT MARKING OPERATIONS</b>	