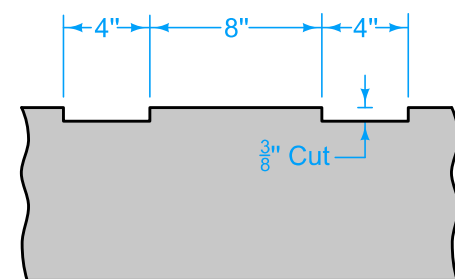
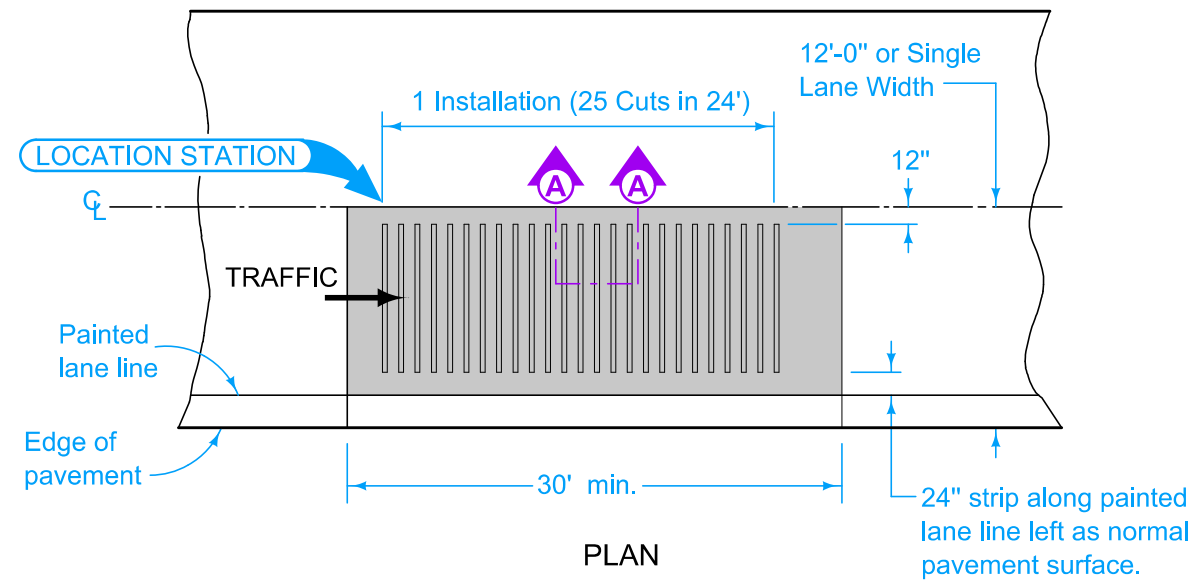
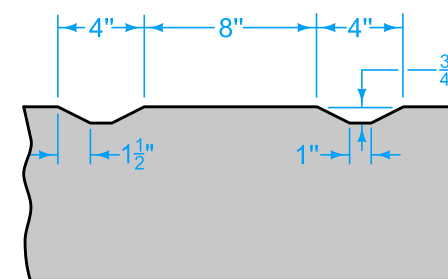


Construct rumble strip panel prior to opening to traffic.

Refer to the contract documents for pavement patching and jointing information.



**SECTION A-A**  
(RUMBLE STRIP CUT IN PAVEMENT)



**SECTION A-A**  
(RUMBLE STRIP PLACED IN PLASTIC P.C. CONCRETE)

Possible Contract Items:

- CD Joint Assembly
- CT Joint
- Patches, Full-Depth Finish, by Area
- Patches, Full-Depth Finish, by Count
- Rumble Strip Panel (In Full Depth Patch)
- Rumble Strip Panel (PCC Surface)
- Rumble Strip Panel (HMA Surface)

Possible Tabulations:

- 102-6C
- 112-7

	REVISION	
	3	04-21-20
<b>STANDARD ROAD PLAN</b>		<b>PV-10</b>
		SHEET 1 of 1
REVISIONS: Changed 18" strip of normal pavement surface to 24".		
APPROVED BY DESIGN METHODS ENGINEER		
<b>RUMBLE STRIP PANEL FOR INTERSECTION APPROACH</b>		