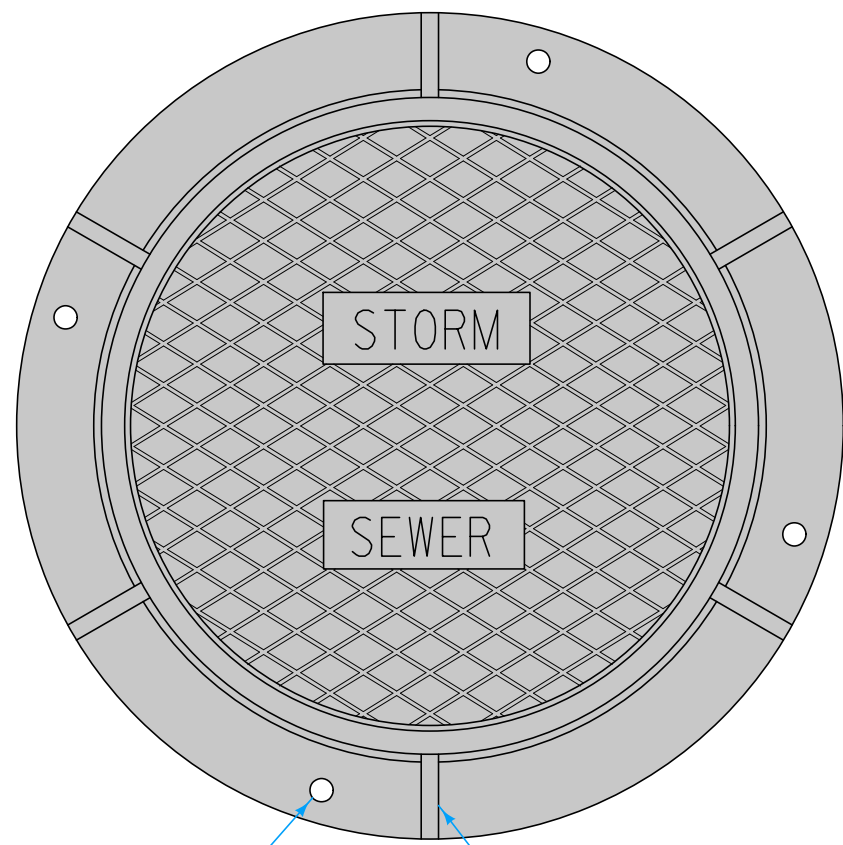
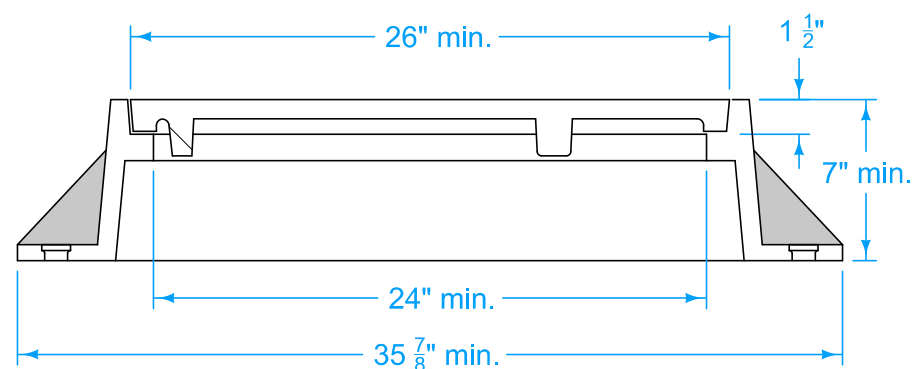


TYPE E
Two-piece fixed casting

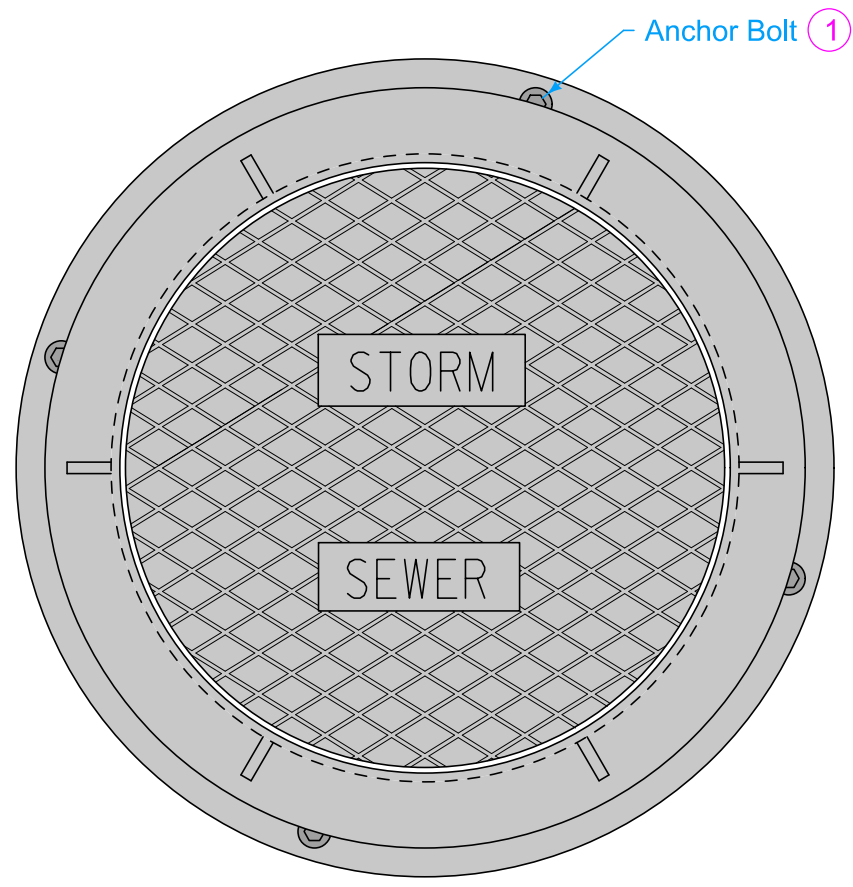


Anchor Bolt Hole 1
Flange (typ.)
PLAN

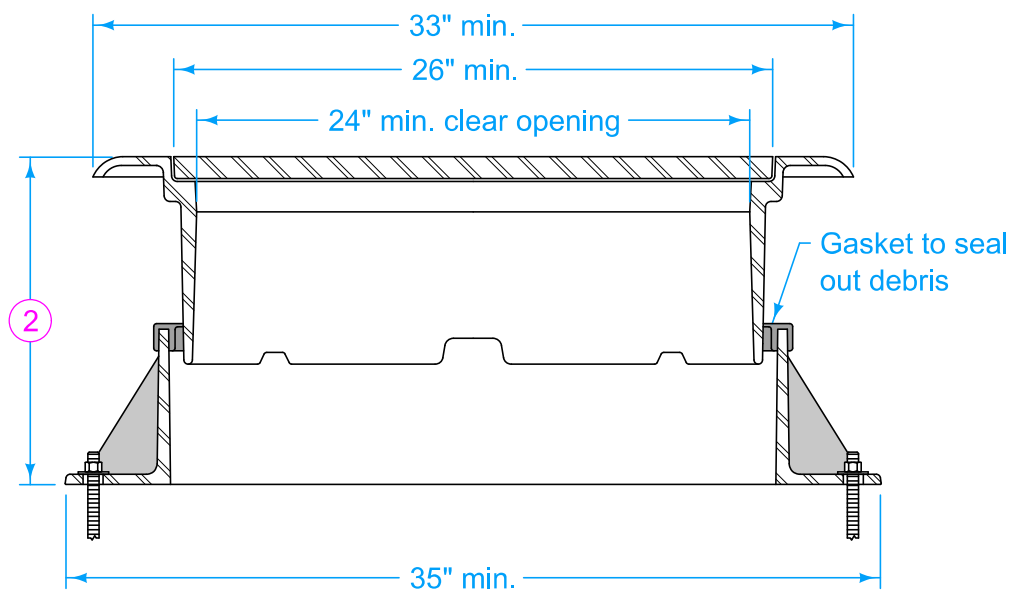


TYPICAL SECTION

TYPE F: HMA
Three-piece floating casting for use in HMA paving



PLAN



TYPICAL SECTION

Frame Notes:
Size, spacing, and number of lugs and flanges may vary.

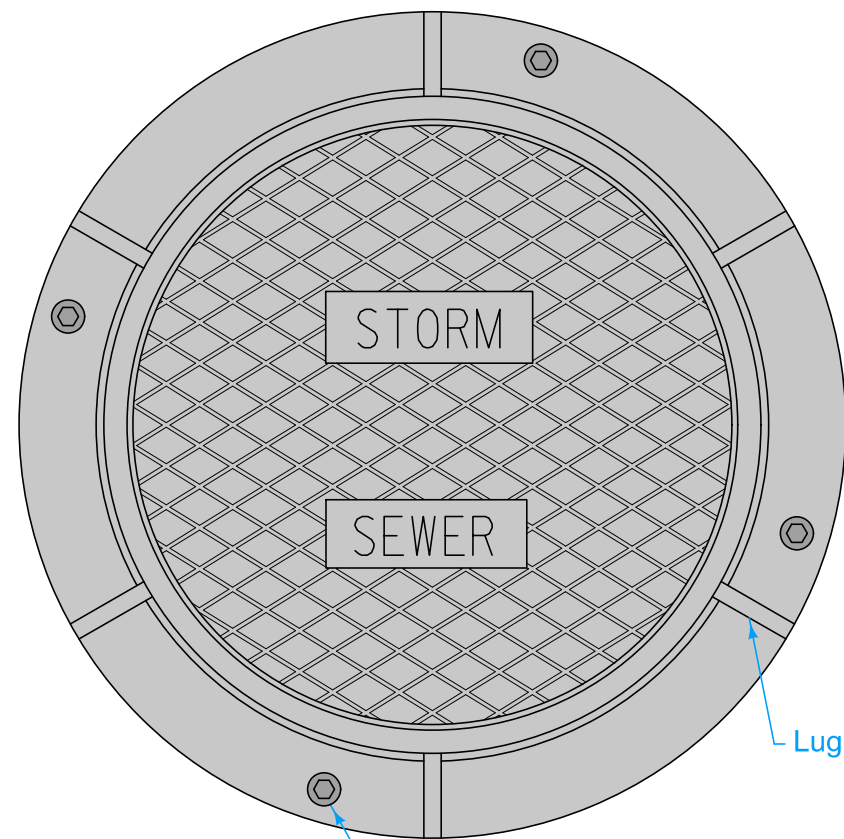
Cover Notes:
Roughness pattern and text style may vary.
Minimum one pickhole.

- 1 Anchor the lower frame of all three-piece castings to the manhole structure. When specified in the contract documents, anchor the frame of two-piece castings to the manhole structure. If casting frame does not include anchor holes or slots, drill four 7/8 inch diameter holes, equally spaced around the frame.
- 2 Casting height varies. Minimum adjustment range of 4 inches.

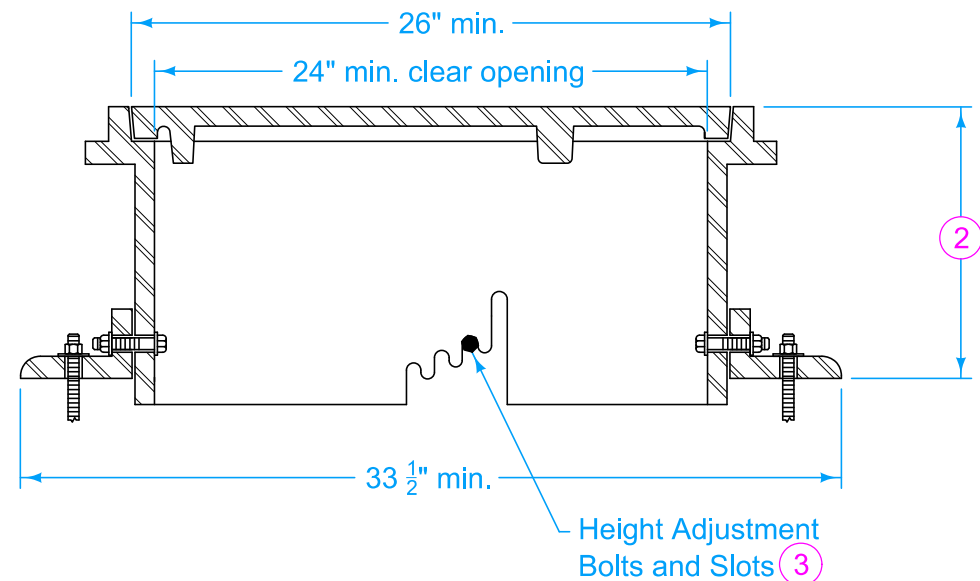
SUDAS	IOWA DOT	REVISION	
		4	04-21-20
FIGURE 6010.602	STANDARD ROAD PLAN	SW-602	
		SHEET 1 of 3	
REVISIONS: Add option for 3-piece HMA casting.			
 SUDAS DIRECTOR		 DESIGN METHODS ENGINEER	

**CASTINGS FOR
STORM SEWER MANHOLES**

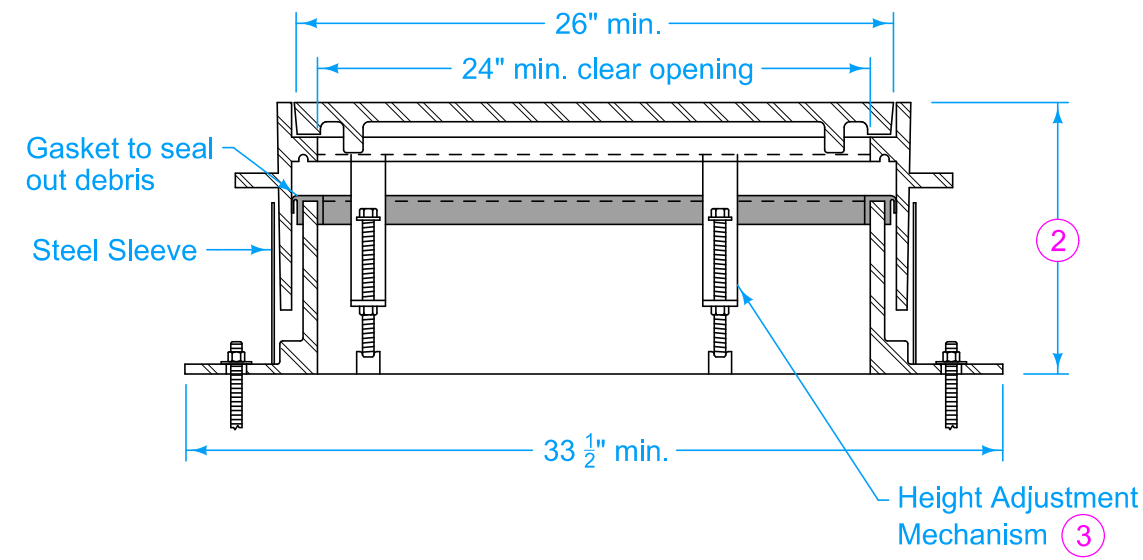
TYPE F: PCC
 Three-piece floating casting for use
 in PCC paving and PCC boxouts



PLAN



TYPICAL SECTION (4)



Frame Notes:
 Size, spacing, and number of lugs and flanges
 may vary.

Cover Notes:
 Roughness pattern and text style may vary.
 Minimum one pickhole.

- (1) Anchor the lower frame of all three-piece castings to the manhole structure. When specified in the contract documents, anchor the frame of two-piece castings to the manhole structure. If casting frame does not include anchor holes or slots, drill four 7/8 inch diameter holes, equally spaced around the frame.
- (2) Casting height varies. Minimum adjustment range of 4 inches.
- (3) Set casting at proper grade using the adjustment slots or adjustment mechanism. Remove bolts or mechanism upon completion of paving.
- (4) Height adjustment method may vary; two options are shown.

SUDAS	IOWA DOT	REVISION	
		4	04-21-20
FIGURE 6010.602	STANDARD ROAD PLAN	SW-602	
		SHEET 2 of 3	

REVISIONS: Add option for 3-piece HMA casting.

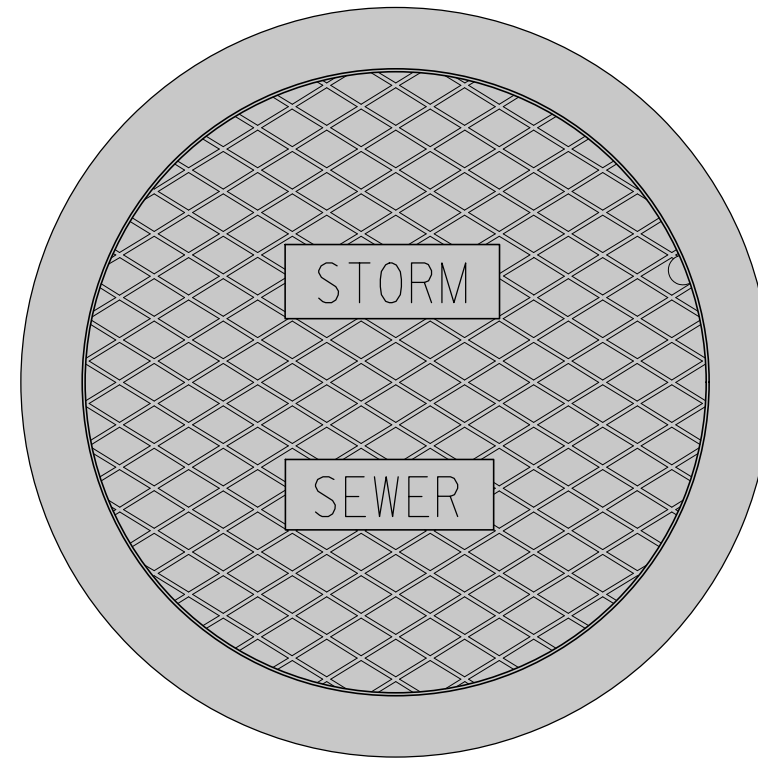
Paul D. Wrigand
 SUDAS DIRECTOR

Stuart Miller
 DESIGN METHODS ENGINEER

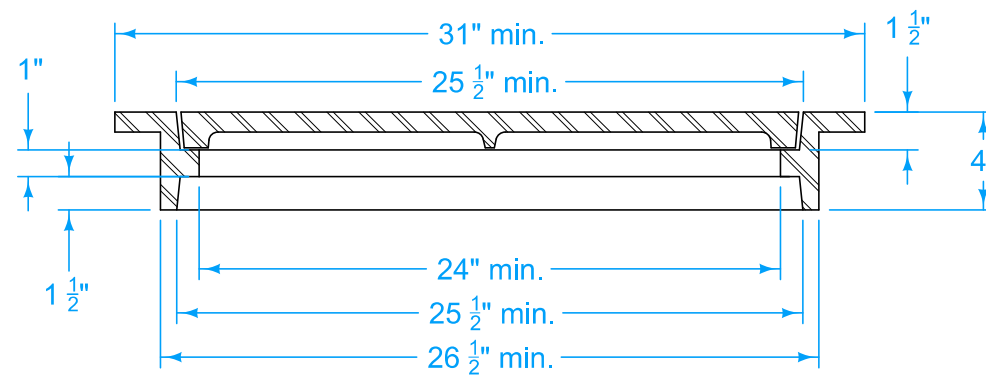
**CASTINGS FOR
 STORM SEWER MANHOLES**

TYPE G
Two piece fixed casting

Cover Notes:
Roughness pattern and text style may vary.
Minimum one pickhole.



PLAN



TYPICAL SECTION

FIGURE 6010.602
SHEET 3 OF 3

SUDAS	IOWA DOT	REVISION	
		4	04-21-20
FIGURE 6010.602	STANDARD ROAD PLAN	SW-602	
		SHEET 3 of 3	

REVISIONS: Add option for 3-piece HMA casting.

Paul D. Wrigand
SUDAS DIRECTOR
 Stuart Miller
DESIGN METHODS ENGINEER

**CASTINGS FOR
STORM SEWER MANHOLES**