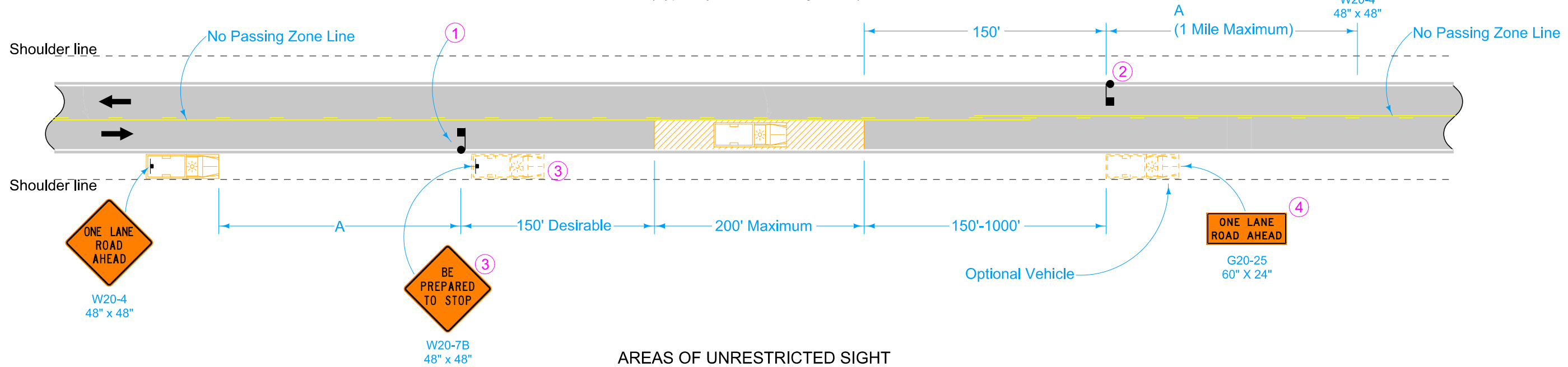
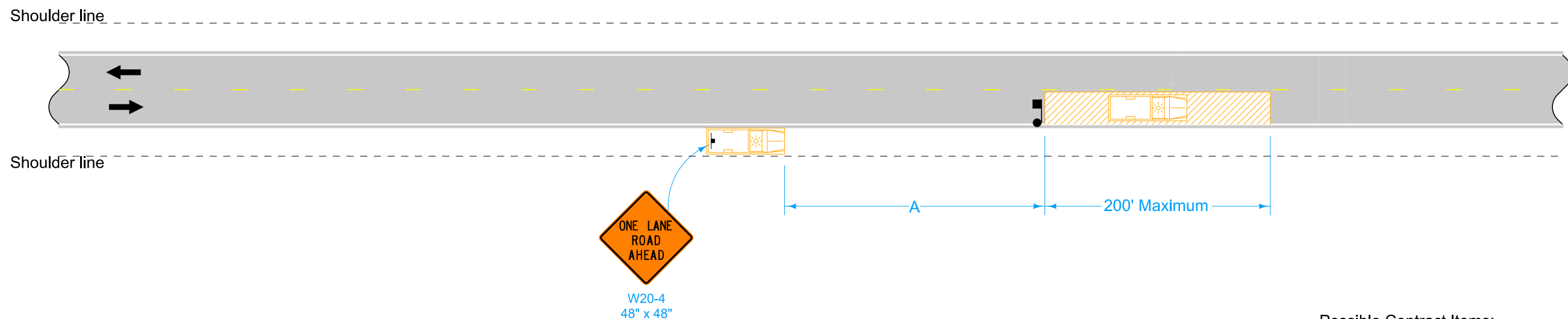


AREAS OF RESTRICTED SIGHT

(Typically a "No-Passing" Zone)



AREAS OF UNRESTRICTED SIGHT



This layout is intended for use with slow-moving operations or with operations involving stops not to exceed 15 minutes. For stops exceeding 15 minutes or in heavy traffic situations, use TC-213.

Equip all vehicles with an amber revolving light or an amber strobe light.

- ① When a stop is made in an area of restricted sight distance, use a flagger to hold traffic in the closed lane and allow traffic to pass when conditions are safe.
- ② When a stop is made or work proceeds in an area where sight distance is restricted from either direction and is anticipated to be more than 5 minutes, a second flagger and ONE LANE ROAD AHEAD sign is required.
- ③ This vehicle and sign may be used in lieu of a flagger for Falling Weight Deflectometer tests.
- ④ Refer to SI-881 for sign details.

Possible Contract Items:
 Flaggers
 Traffic Control

LEGEND

- ← Direction of Traffic
- 🚧 Flagger
- 🚦 Traffic Sign
- ▨ Work Area
- 🚚 Work Vehicle

SPEED LIMIT (mph)*	A min.
25 or less	200'
30-35	300'
40-45	500'
50 or greater	1000'

* Speed Limit refers to regulatory speed limit before road work.

	REVISION	
	4	4-18-23
TC-231		
SHEET 1 of 1		
REVISIONS: Added speed limit note. Formatted speed limit table.		
APPROVED BY DESIGN METHODS ENGINEER		
SLOW MOVING VEHICLE OPERATING IN THE TRAFFIC LANE		