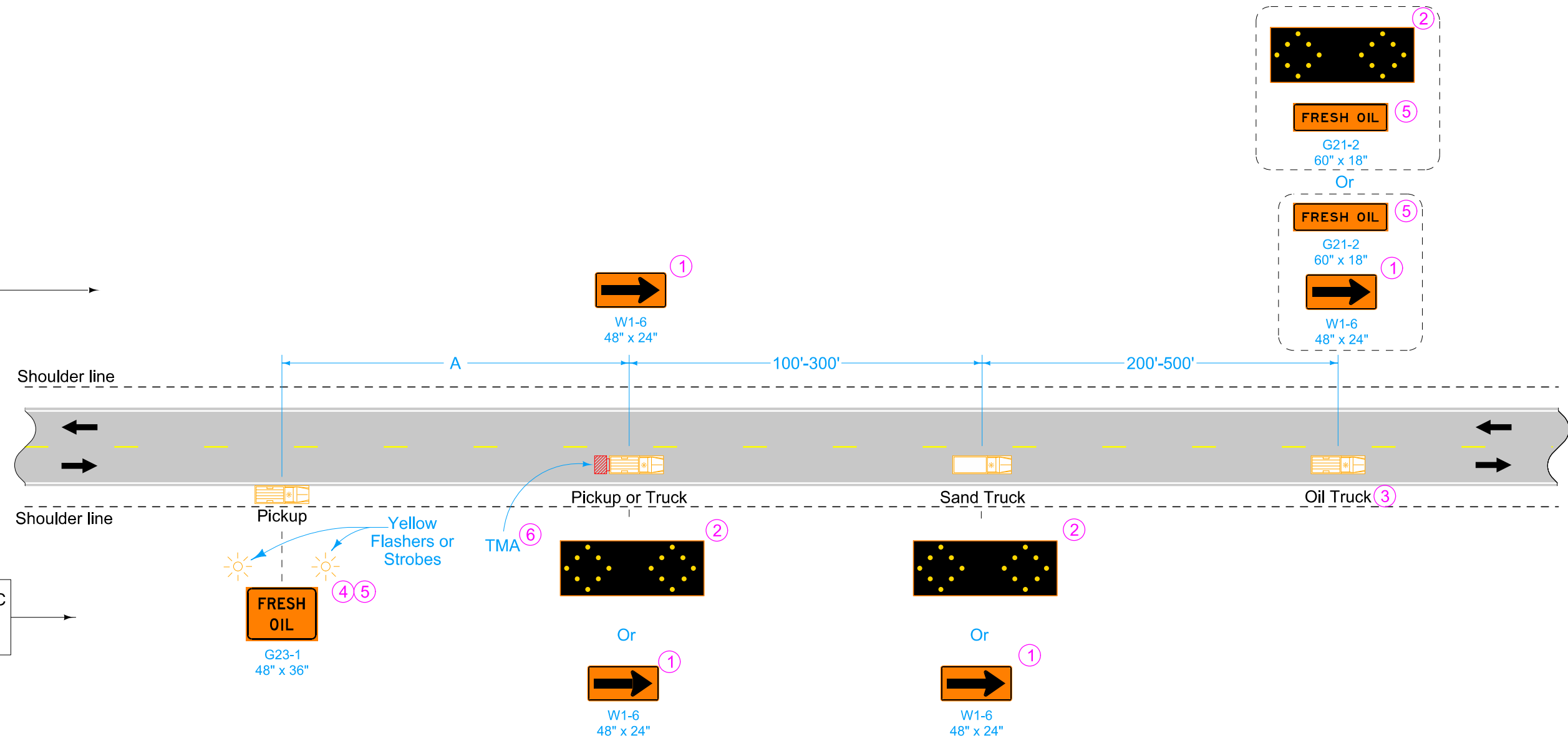


SIGNS FACING OPPOSING TRAFFIC



SIGNS FACING TRAFFIC APPROACHING FROM THE REAR

VEHICLES NOT STRADDLING CENTERLINE

- Equip all vehicles with an amber revolving light or amber strobe light.
- ① Optional Fluorescent Yellow Green (FYG) sign background may be used.
 - ② This arrow display may be operated in a four-corner caution mode.
 - ③ Move this vehicle to the shoulder to accommodate passing traffic.
 - ④ A vehicle mounted Portable Dynamic Message Sign (PDMS) may be used in lieu of this sign.
 - ⑤ Refer to SI-881 for sign details.
 - ⑥ TMA required for speed limits of 55 mph or greater and ADT greater than 3,000.

Possible Contract Item:
Traffic Control

LEGEND

← Direction of Traffic

▨ Truck-Mounted Attenuator (TMA)

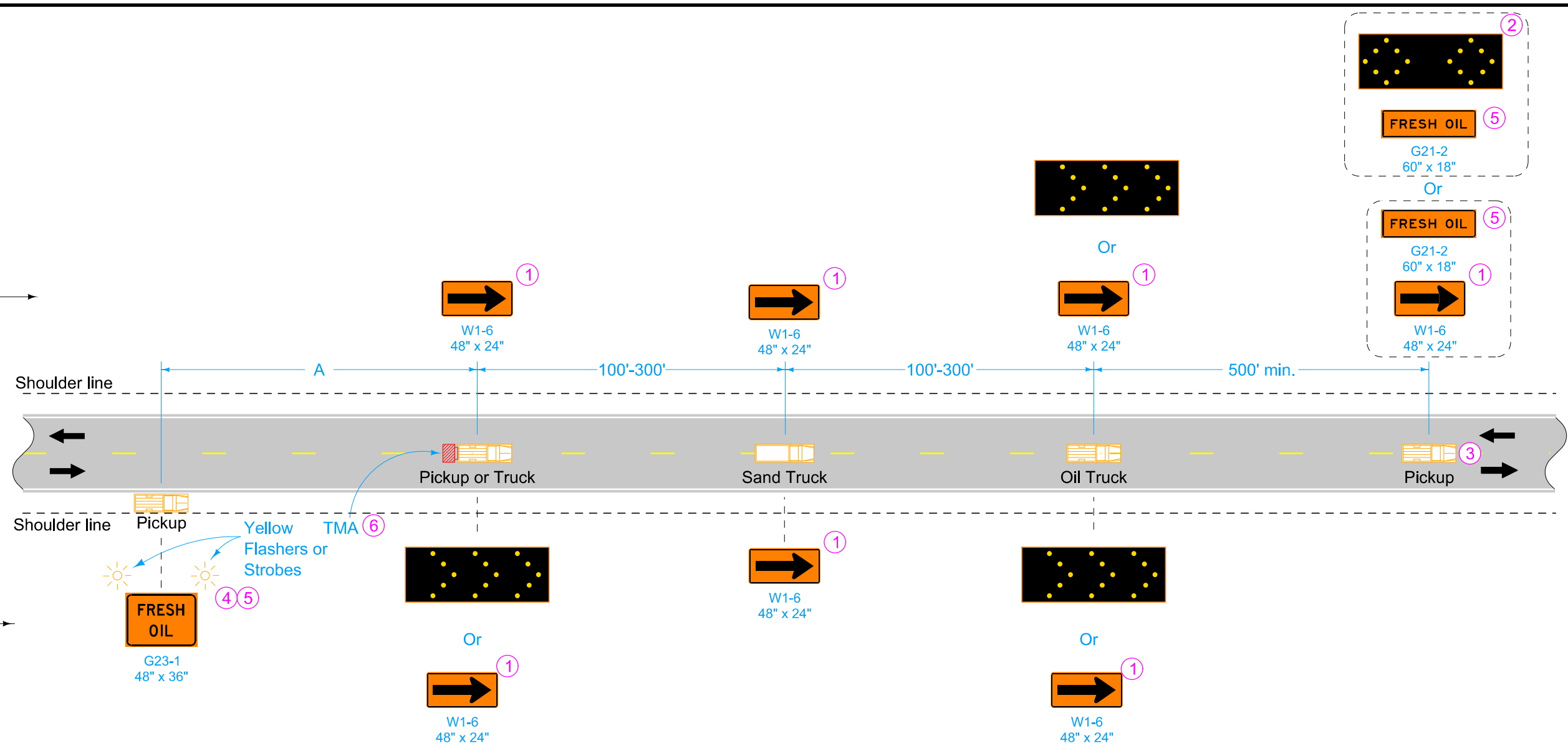
SPEED LIMIT (mph)*	A min.
25 or less	200'
30 - 35	300'
40 - 45	500'
50 or greater	1000'

* Speed Limit refers to regulatory speed limit before road work.

	REVISION	
	4	4-18-23
STANDARD ROAD PLAN		TC-234
REVISIONS: Added speed limit note.		SHEET 1 of 2
 APPROVED BY DESIGN METHODS ENGINEER		
STRIP SEALING OPERATIONS		

SIGNS FACING OPPOSING TRAFFIC

SIGNS FACING TRAFFIC APPROACHING FROM THE REAR



VEHICLES STRADDLING CENTERLINE

- ① Optional Fluorescent Yellow Green (FYG) sign background may be used.
- ② This arrow display may be operated in a four-corner caution mode.
- ③ Move this vehicle to the shoulder to accommodate passing traffic.
- ④ A vehicle mounted Portable Dynamic Message Sign (PDMS) may be used in lieu of this sign.
- ⑤ Refer to SI-881 for sign details.
- ⑥ TMA required for speed limits of 55 mph or greater and ADT greater than 3,000.

LEGEND

← Direction of Traffic

▨ Truck-Mounted Attenuator (TMA)

SPEED LIMIT (mph)*	A min.
25 or less	200'
30 - 35	300'
40 - 45	500'
50 or greater	1000'

* Speed Limit refers to regulatory speed limit before road work.

 STANDARD ROAD PLAN	REVISION	
	4	4-18-23
TC-234		SHEET 2 of 2
REVISIONS: Added speed limit note.		
 APPROVED BY DESIGN METHODS ENGINEER		
STRIP SEALING OPERATIONS		