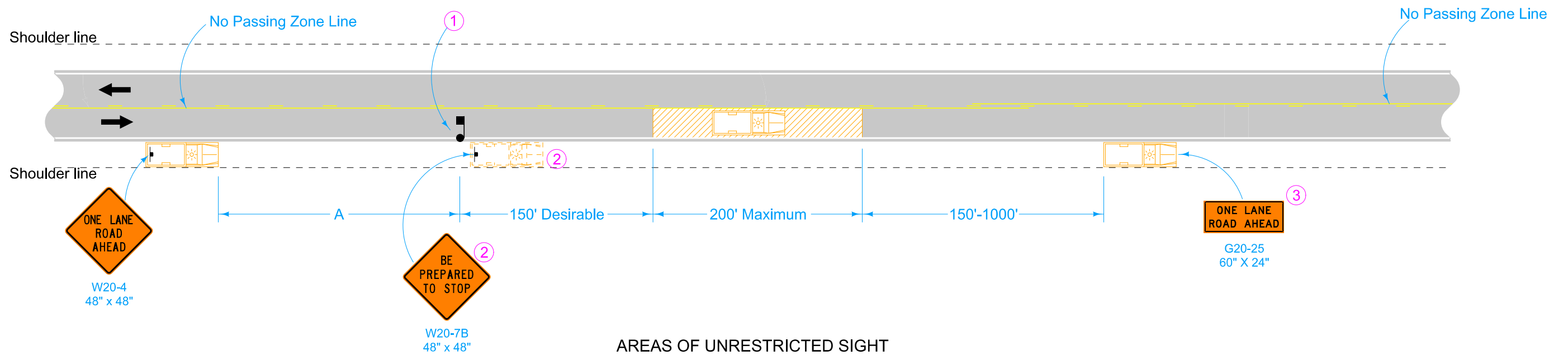
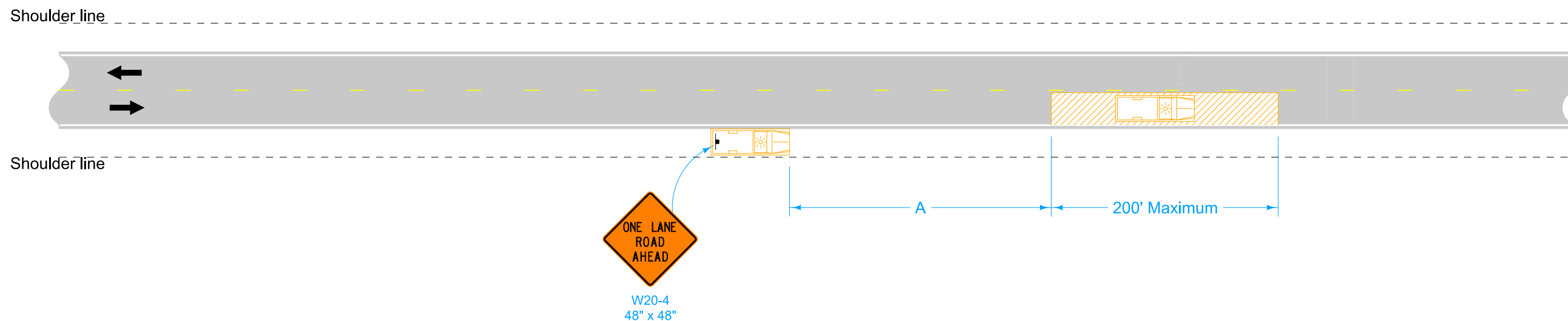


**AREAS OF RESTRICTED SIGHT**  
(Typically a "No-Passing" Zone)



**AREAS OF UNRESTRICTED SIGHT**



**LEGEND**

- Direction of Traffic
- Flagger
- Traffic Sign
- Work Area
- Work Vehicle

SPEED LIMIT (mph)*	A min.
25 or less	200'
30-35	300'
40-45	500'
50 or greater	1000'

\* Speed Limit refers to regulatory speed limit before road work.

For stops exceeding 15 minutes or in heavy traffic situations, use TC-213.

Equip all vehicles with an amber revolving light or an amber strobe light.

- ① When a stop is made in an area of restricted sight distance, use a flagger to hold traffic in the closed lane and allow to pass when conditions are safe.
- ② This vehicle and sign may be used in lieu of a flagger.
- ③ Refer to SI-881 for sign details.

	REVISION	
	2	4-18-23
<b>STANDARD ROAD PLAN</b>		<b>TC-235</b>
		SHEET 1 of 1
REVISIONS: Added speed limit note. Formatted speed limit table.		
APPROVED BY DESIGN METHODS ENGINEER		
<b>EDGE RUT REPAIR</b>		