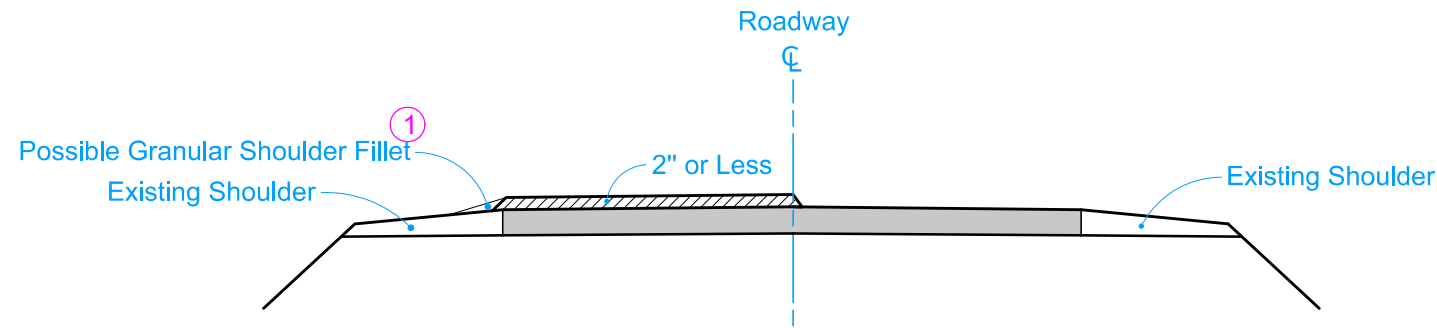
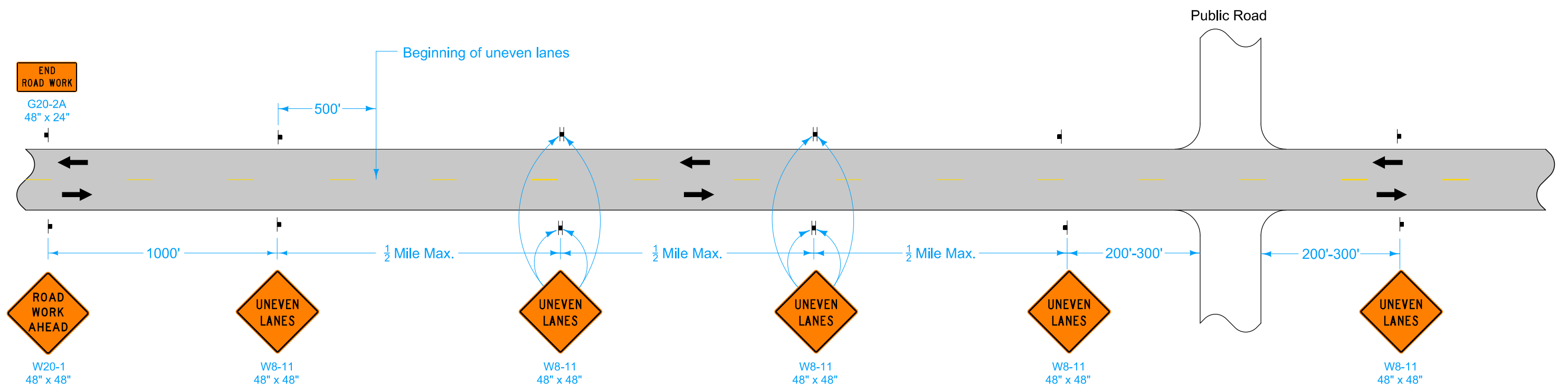
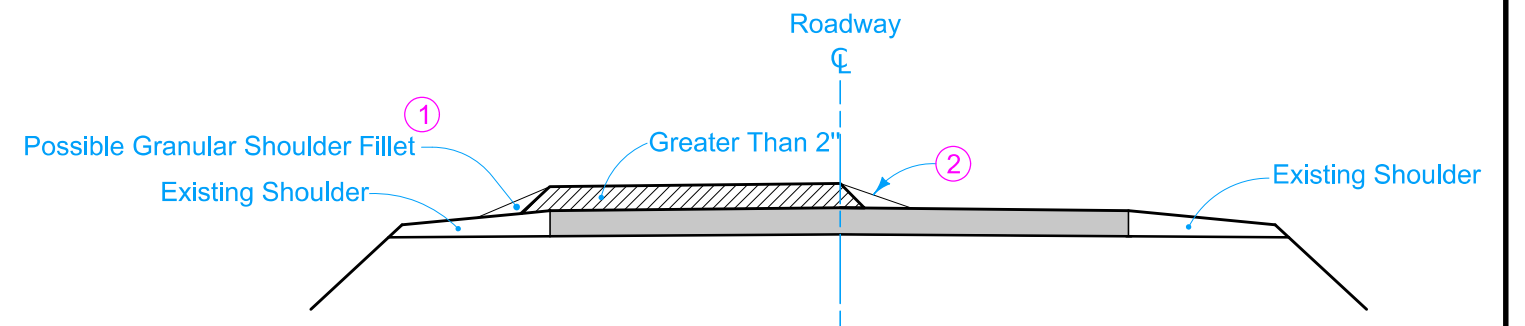


DESIGN LIFT THICKNESSES 2" OR LESS



DESIGN LIFT THICKNESSES GREATER THAN 2" (WITH CL FILLET)



LEGEND

← Direction of Traffic

⊢ Traffic Sign

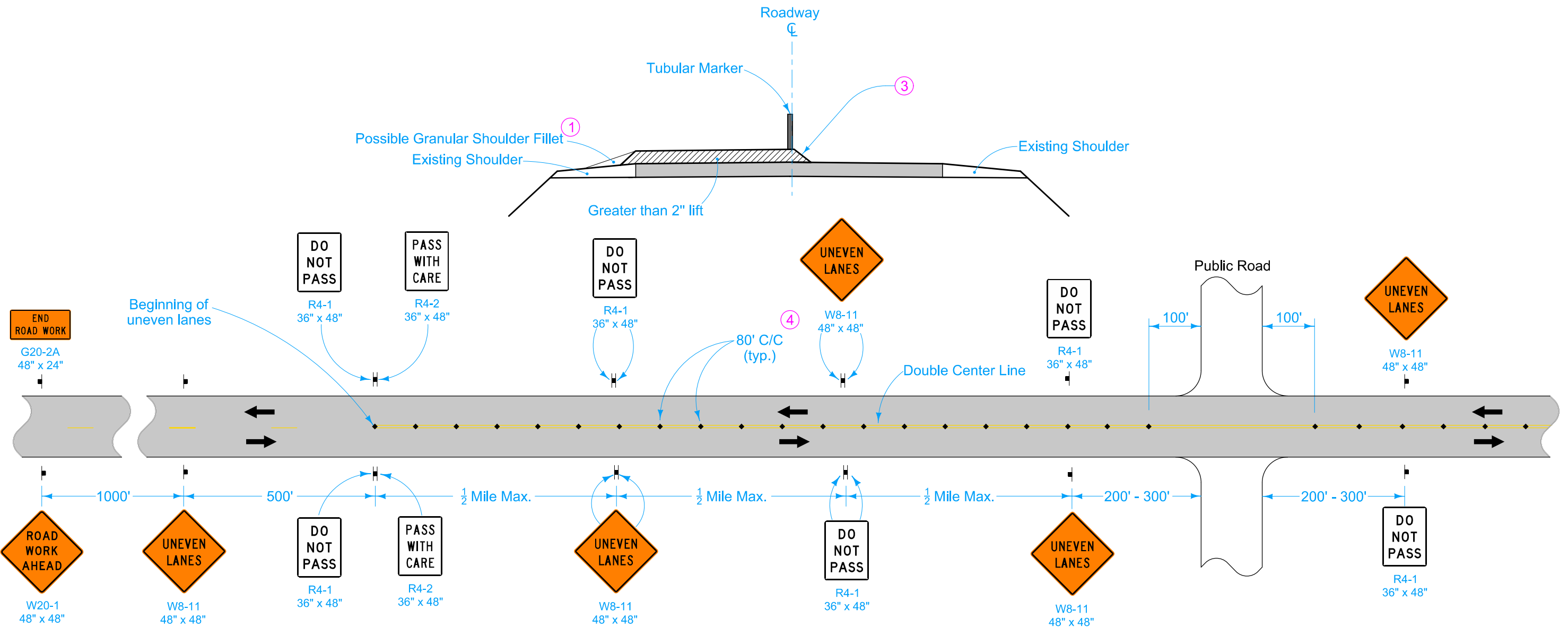
- ① Shoulder Fillet: Refer to Section 1107 of the Standard Specifications and Safety Edge specifications.
- ② Centerline fillet may be notched wedge, Safety Edge, or a temporary 3:1 HMA fillet.

Possible Contract Items:
Pavement Marking Items
Traffic Control

Possible Tabulation:
108-22

<p>STANDARD ROAD PLAN</p>	REVISION	
	4	10-15-19
<p>TC-282</p> <p>SHEET 1 of 3</p>		
<p>REVISIONS: New logo.</p>		
<p><i>Steve Miller</i></p> <p>APPROVED BY DESIGN METHODS ENGINEER</p>		
<p>UNEVEN LANES</p>		

DESIGN LIFT THICKNESSES GREATER THAN 2" (WITHOUT C FILLET)

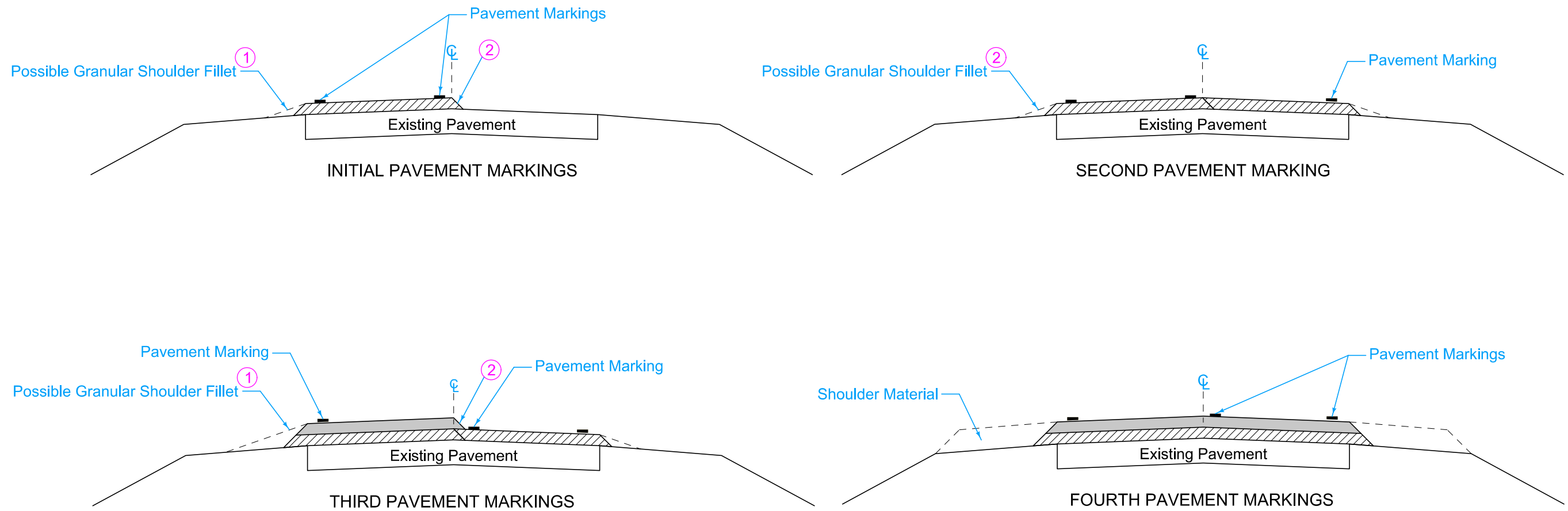


LEGEND	
←	Direction of Traffic
†	Traffic Sign
◆	Tubular Marker

"No-Passing" zones shall not exceed 2.5 miles for ADT less than 2500 vpd or 2.0 miles for ADT from 2500 to 5000 vpd.

- ① Shoulder Fillet: Refer to Section 1107 of the Standard Specifications and Safety Edge specifications.
- ③ Typical 1:1 taper.
- ④ Spacing = 40 feet where horizontal curve radius is less than 1000 feet.



	REVISION	
	4	10-15-19
STANDARD ROAD PLAN		
REVISIONS: New logo.		
 APPROVED BY DESIGN METHODS ENGINEER		
UNEVEN LANES		



PAVEMENT MARKING SEQUENCE

- ① Shoulder Fillet: Refer to Standard Specification 1107 and Safety Edge specifications.
- ② Centerline fillet may be notched wedge, Safety Edge, or a temporary 3:1 HMA fillet.

LEGEND	
	Surface Course
	Intermediate Course

 STANDARD ROAD PLAN	REVISION
	4 10-15-19
TC-282	
SHEET 3 of 3	
REVISIONS: New logo.	
 <small>APPROVED BY DESIGN METHODS ENGINEER</small>	
UNEVEN LANES	