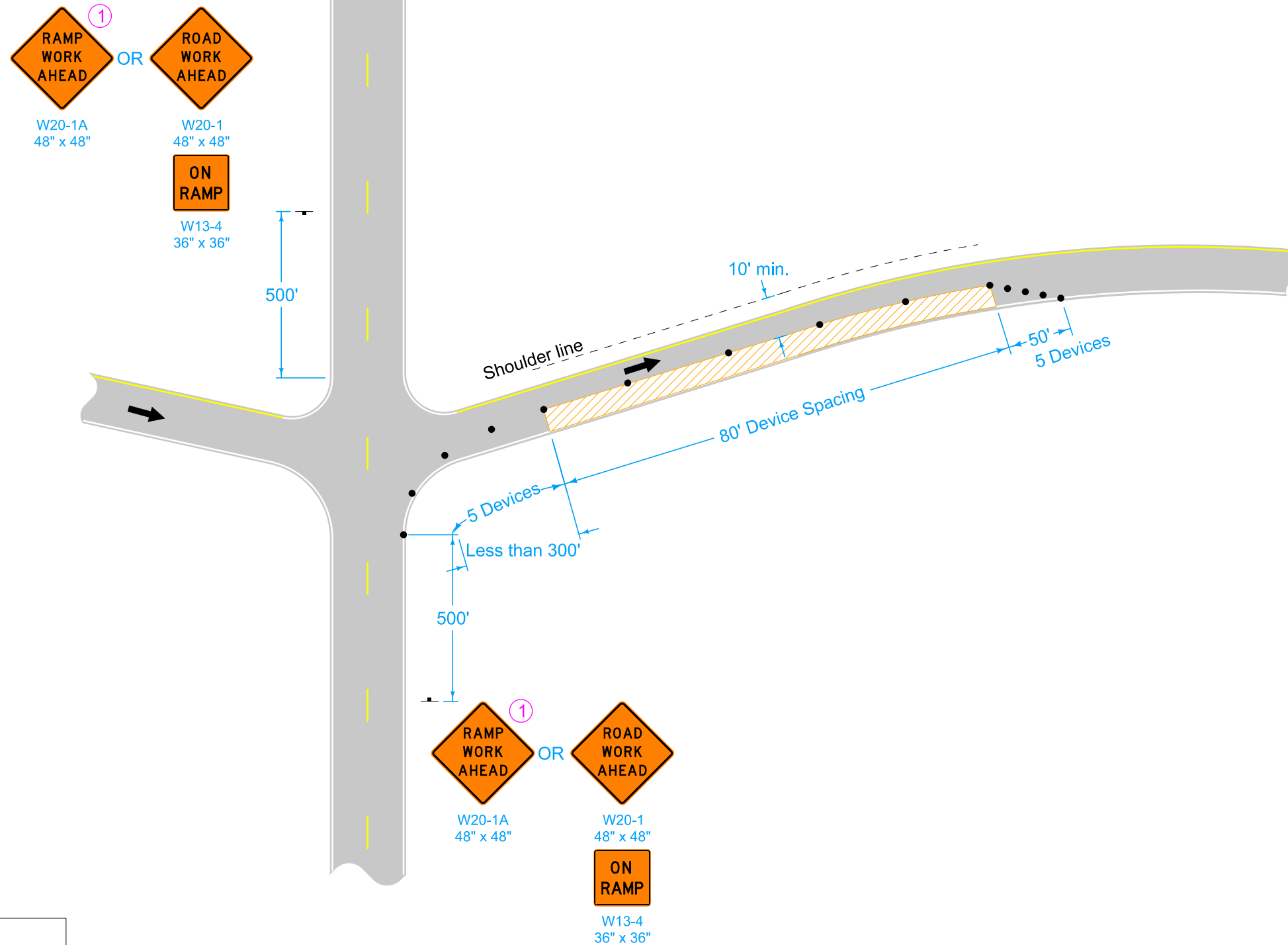


① Refer to SI-881 for sign details.

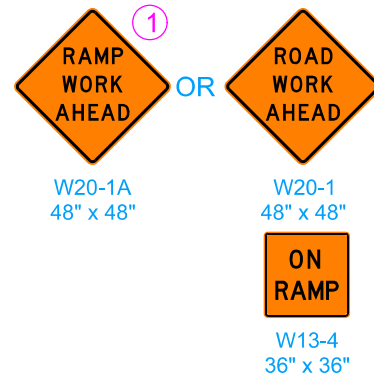
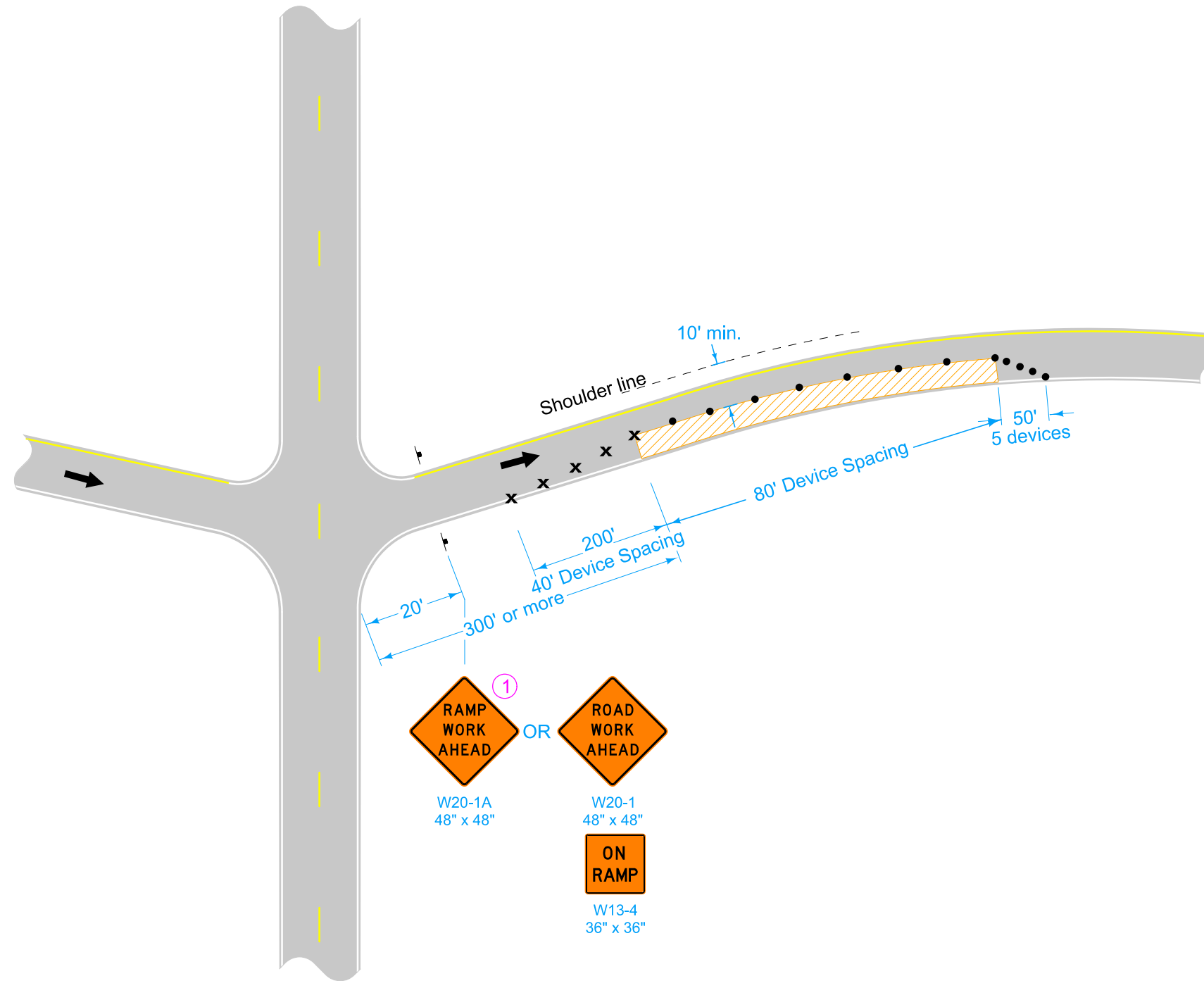


LEGEND	
	Traffic Sign
	42" Channelizer
	Direction of Traffic
	Work Area

Possible Contract Item:
Traffic Control

	REVISION	
	3	10-15-19
STANDARD ROAD PLAN		TC-416
REVISIONS: New logo.		SHEET 1 of 4
APPROVED BY DESIGN METHODS ENGINEER		
PARTIAL LANE CLOSURE ON RAMPS		

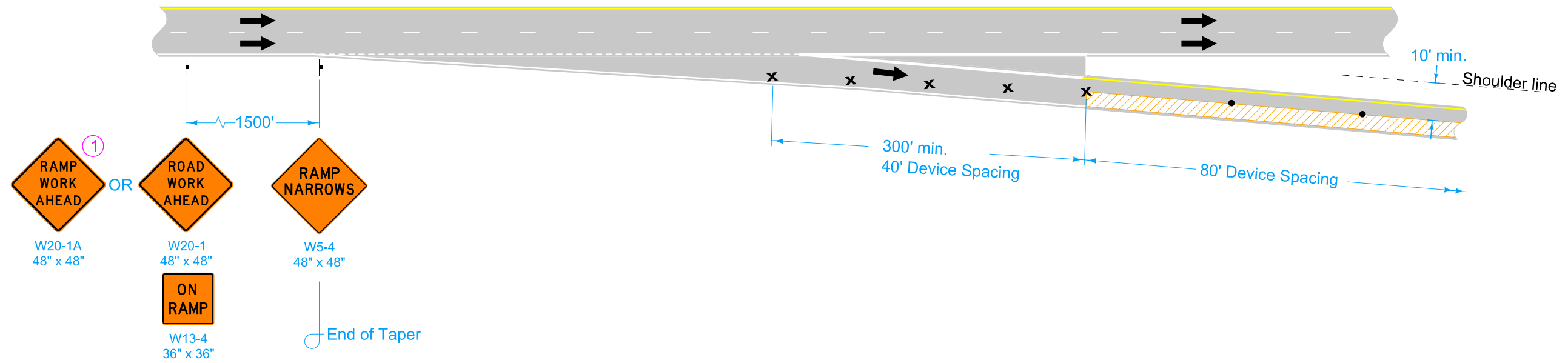
① Refer to SI-881 for sign details.



LEGEND	
x	Drum
†	Traffic Sign
•	42" Channelizer
←	Direction of Traffic
	Work Area

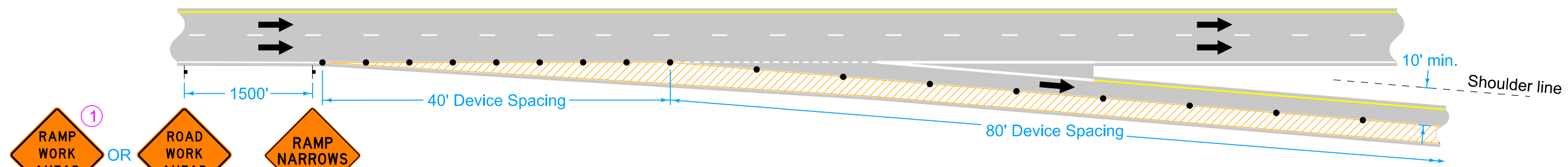
	REVISION	
	3	10-15-19
STANDARD ROAD PLAN		TC-416
REVISIONS: New logo.		SHEET 2 of 4
 APPROVED BY DESIGN METHODS ENGINEER		
PARTIAL LANE CLOSURE ON RAMPS		

① Refer to SI-881 for sign details.



LEGEND	
x	Drum
†	Traffic Sign
•	42" Channelizer
←	Direction of Traffic
▨	Work Area

	REVISION	
	3	10-15-19
STANDARD ROAD PLAN		TC-416
REVISIONS: New logo.		SHEET 3 of 4
 APPROVED BY DESIGN METHODS ENGINEER		
PARTIAL LANE CLOSURE ON RAMPS		



①
RAMP WORK AHEAD
 W20-1A
 48" x 48"

OR

ROAD WORK AHEAD
 W20-1
 48" x 48"

ON RAMP
 W13-4
 36" x 36"

RAMP NARROWS
 W5-4
 48" x 48"

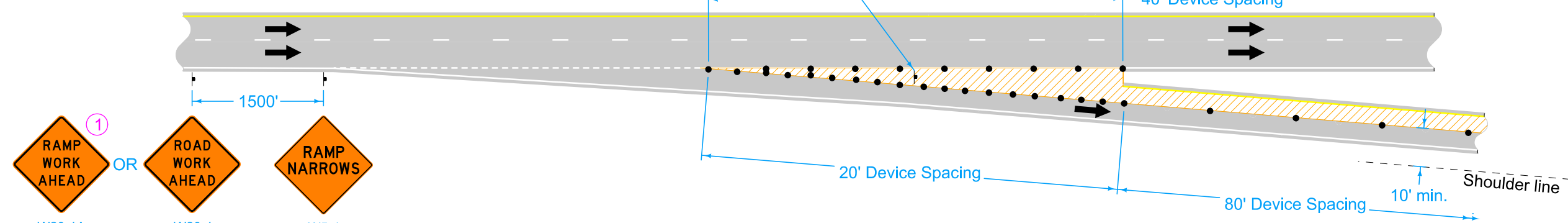
End of Taper

①
 000
 G20-23A
 12" x 36"

① ②
EXIT
 G20-23
 48" x 48"

① Refer to SI-881 for sign details.

② Temporary EXIT sign, mounted so that bottom of sign is a minimum of 3 feet above pavement surface. If in place for more than one day, mount an Exit Number Panel with the proper exit number above the temporary EXIT sign.



①
RAMP WORK AHEAD
 W20-1A
 48" x 48"

OR

ROAD WORK AHEAD
 W20-1
 48" x 48"

ON RAMP
 W13-4
 36" x 36"

RAMP NARROWS
 W5-4
 48" x 48"

End of Taper

LEGEND

- ⚡ Traffic Sign
- 42" Channelizer
- ← Direction of Traffic
- ▨ Work Area

	REVISION	
	3	10-15-19
STANDARD ROAD PLAN		TC-416
REVISIONS: New logo.		SHEET 4 of 4
 APPROVED BY DESIGN METHODS ENGINEER		
PARTIAL LANE CLOSURE ON RAMP		