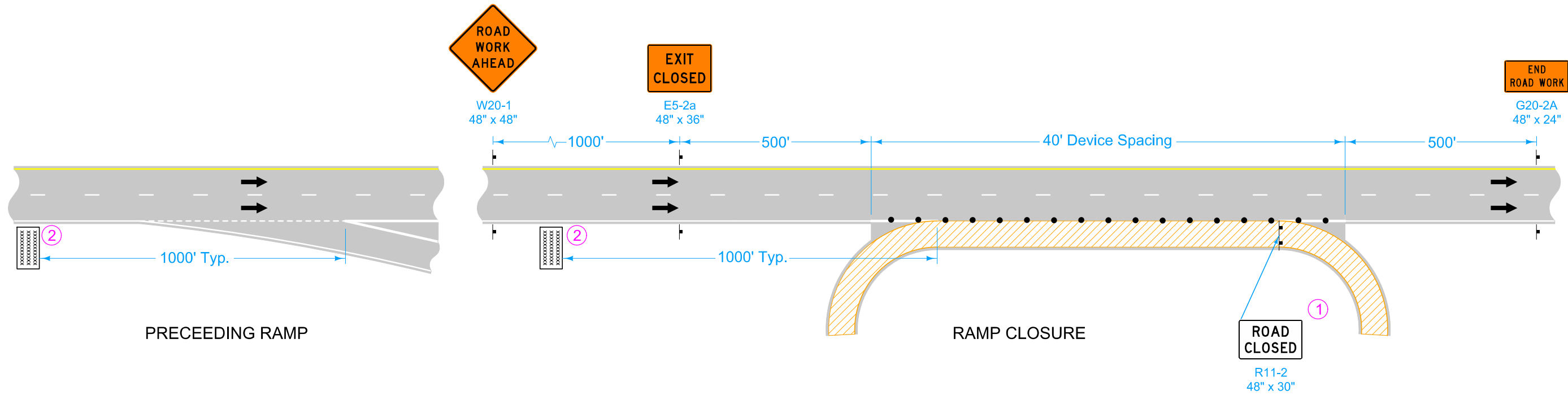


- ① A vehicle with an amber revolving light or amber strobe light may be substituted for the Type III barricade.
- ② Place Portable Dynamic Message Sign 3 calendar days prior to ramp closure. Leave in place until ramp is re-opened. The Engineer will determine the message to display.



Possible Contract Items:  
 Safety Closure  
 Traffic Control  
 Portable Dynamic Message Sign

Possible Tabulation:  
 108-13A

**LEGEND**

- Type III Barricade
- Traffic Sign
- 42" Channelizer
- Direction of Traffic
- Work Area
- Portable Dynamic Message Sign

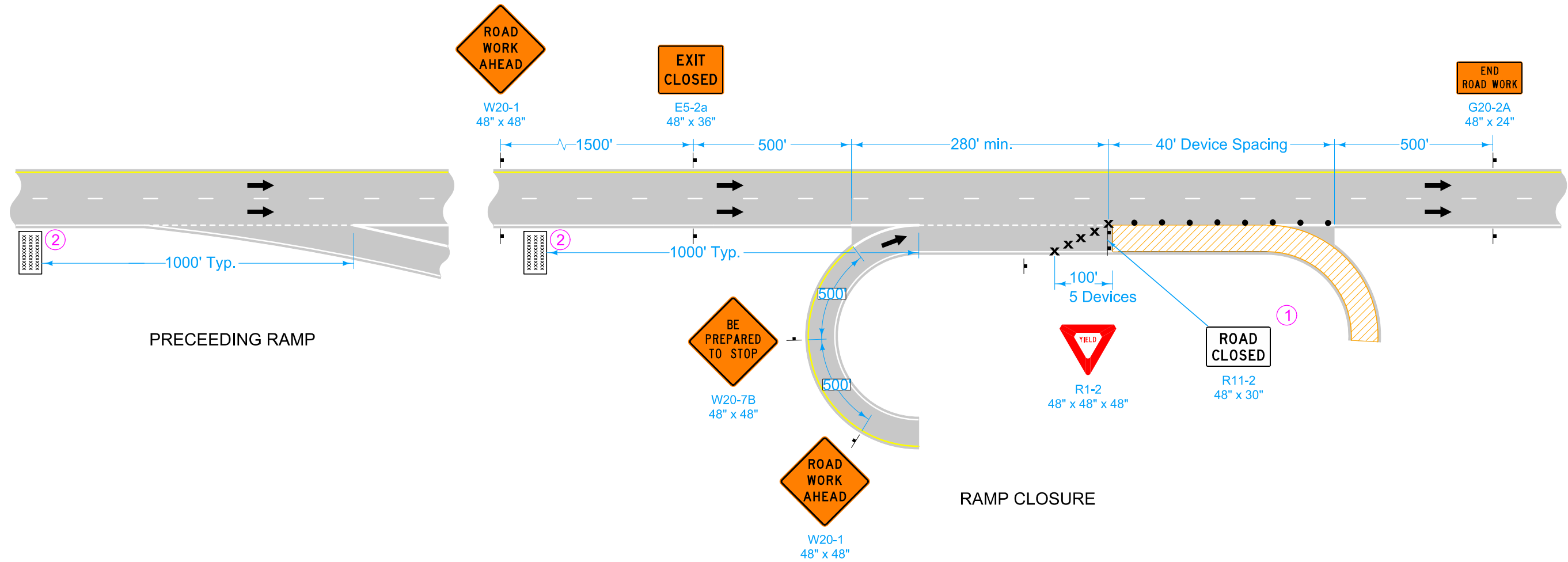
	REVISION	
	5	04-21-20
STANDARD ROAD PLAN		TC-417
		SHEET 1 of 3

REVISIONS: Added Portable Dynamic Message Signs and new note 2. Retitled standard.

*Shawn Miller*  
 APPROVED BY DESIGN METHODS ENGINEER

EXIT RAMP CLOSURE

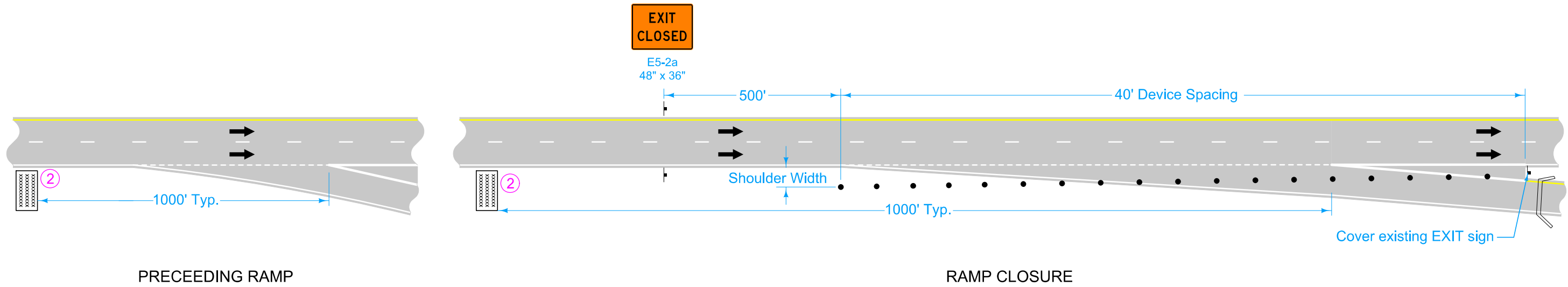
- ① A vehicle with an amber revolving light or amber strobe light may be substituted for the Type III barricade.
- ② Place Portable Dynamic Message Sign 3 calendar days prior to ramp closure. Leave in place until ramp is re-opened. The Engineer will determine the message to display.



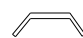



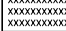
LEGEND	
	Type III Barricade
	Traffic Sign
	Drum
	42" Channelizer
	Direction of Traffic
	Work Area
	Portable Dynamic Message Sign



	REVISION
	5   04-21-20
<b>STANDARD ROAD PLAN</b>	
TC-417	
SHEET 2 of 3	
REVISIONS: Added Portable Dynamic Message Signs and new note 2. Refined standard.	
APPROVED BY DESIGN METHODS ENGINEER	
<b>EXIT RAMP CLOSURE</b>	

② Place Portable Dynamic Message Sign 3 calendar days prior to ramp closure. Leave in place until ramp is re-opened. The Engineer will determine the message to display.



LEGEND

-  Road Closure
-  Traffic Sign
-  42" Channelizer
-  Direction of Traffic
-  Portable Dynamic Message Sign

 <b>STANDARD ROAD PLAN</b>	REVISION	
	5	04-21-20
<b>TC-417</b>		
SHEET 3 of 3		
REVISIONS: Added Portable Dynamic Message Signs and new note 2. Retitled standard.		
 APPROVED BY DESIGN METHODS ENGINEER		
EXIT RAMP CLOSURE		