

DETAIL 'A'

Place Concrete Barrier Markers at 10 ft C/C on bridge rail.

LEGEND	
	Traffic Sign
	Drum
	42" Channelizer
	Speed Feedback Sign
	Arrow Board
	Temporary Crash Cushion
	Work Area
	Direction of Traffic

- ① For roadways with a posted speed limit of 60 mph or greater before road work:
Place SPEED LIMIT AHEAD sign and SPEED LIMIT 55 sign prior to the lane closure as shown.
Place SPEED LIMIT 65 or 70 beyond the work area as shown.

For traffic control zones lasting more than 4 hours, place a Speed Feedback Sign at the end of the merge taper.
- ② Refer to SI-881 for sign details.
- ③ For lanes closed to traffic, place two drums every 1000 feet. For full depth excavations in a closed lane, place two drums in front of each location. Additional drums need not be placed for full depth excavations spaced closer than 150 feet.

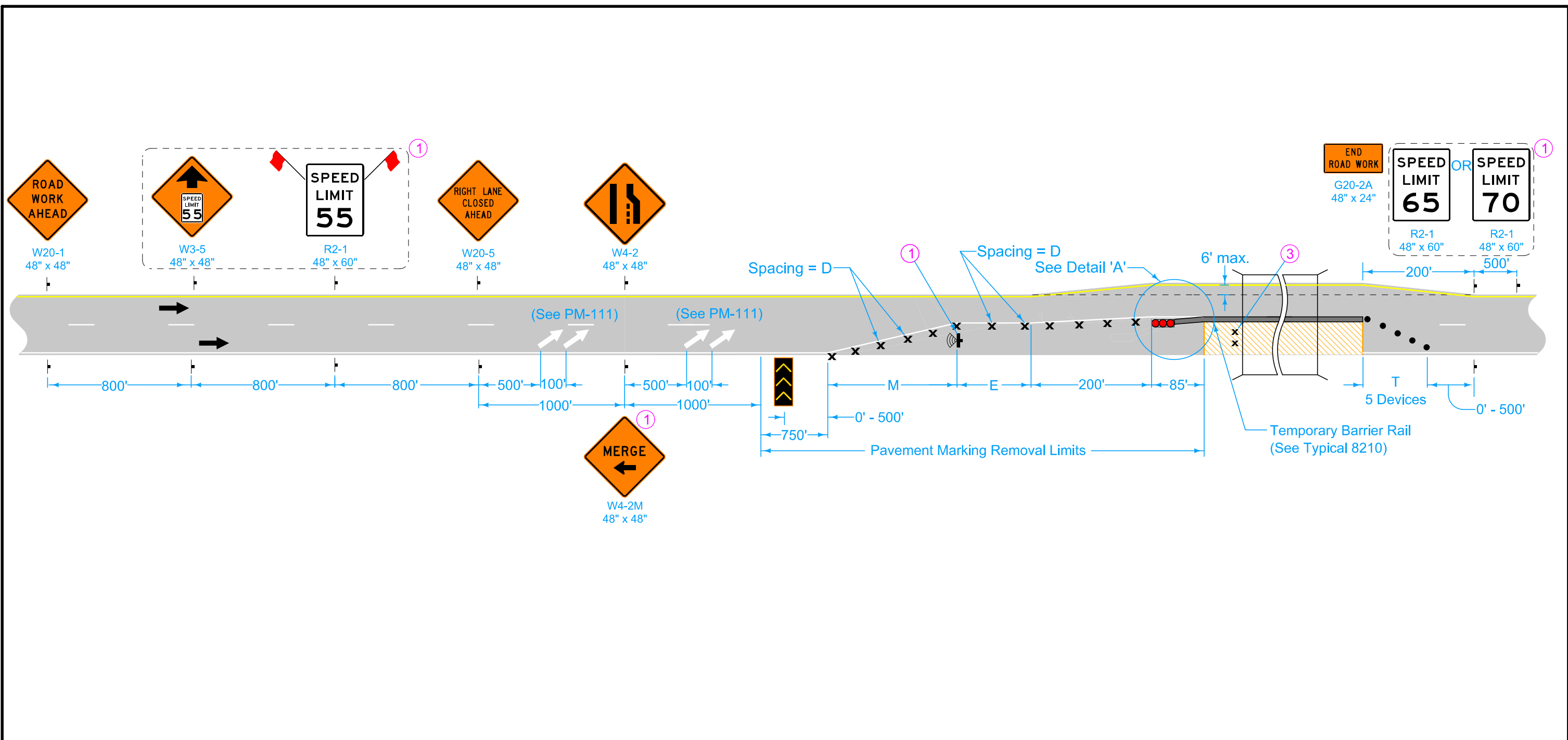
SPEED LIMIT (mph)*	D	E	M	T
45 - 50	45'	300'	630'	100'
55 - 60	55'	400'	770'	100'
65 - 70	65'	500'	910'	100'

* Speed Limit refers to regulatory speed limit before road work.

Possible Contract Items:
 Painted Symbols and Legends
 Pavement Marking Items
 Pavement Markings Removed
 Symbols and Legends Removed
 Temporary Barrier Rail
 Temporary Crash Cushions

Possible Tabulations:
 108-22
 108-29
 108-30
 108-33

 STANDARD ROAD PLAN	REVISION	
	21	4-15-25
	TC-421	
SHEET 1 of 2		
REVISIONS: Added 200' dimension to exit taper.		
 APPROVED BY DESIGN METHODS ENGINEER		
LANE CLOSURE WITH TBR		



LEGEND	
†	Traffic Sign
x	Drum
•	42" Channelizer
⦿	Speed Feedback Sign
◀◀◀	Arrow Board
●●●	Temporary Crash Cushion
▨	Work Area
←	Direction of Traffic

- ① For roadways with a posted speed limit of 60 mph or greater before road work:
Place SPEED LIMIT AHEAD sign and SPEED LIMIT 55 sign prior to the lane closure as shown. Place SPEED LIMIT 65 or 70 beyond the work area as shown.
For traffic control zones lasting more than 4 hours, place a Speed Feedback Sign at the end of the merge taper.
- ② Refer to SI-881 for sign details.
- ③ For lanes closed to traffic, place two drums every 1000 feet. For full depth excavations in a closed lane, place two drums in front of each location. Additional drums need not be placed for full depth excavations spaced closer than 150 feet.

	REVISION	
	21	4-15-25
STANDARD ROAD PLAN		TC-421
REVISIONS: Added 200' dimension to exit taper.		SHEET 2 of 2
 APPROVED BY DESIGN METHODS ENGINEER		
LANE CLOSURE WITH TBR		