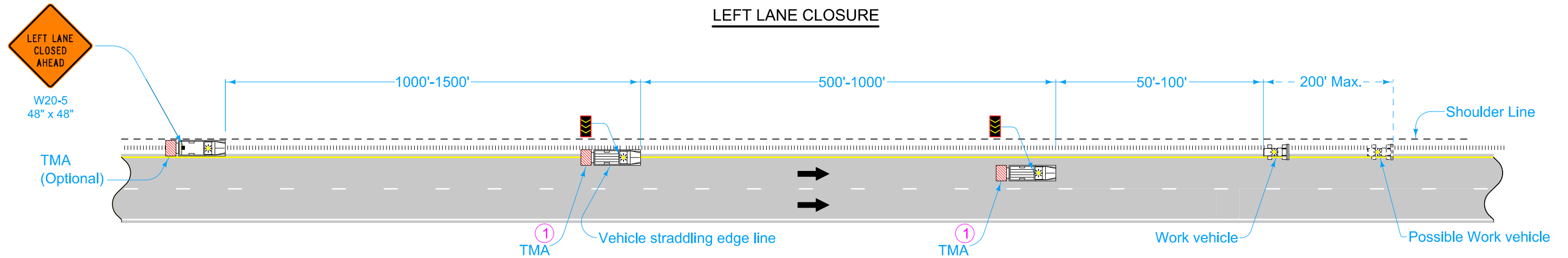
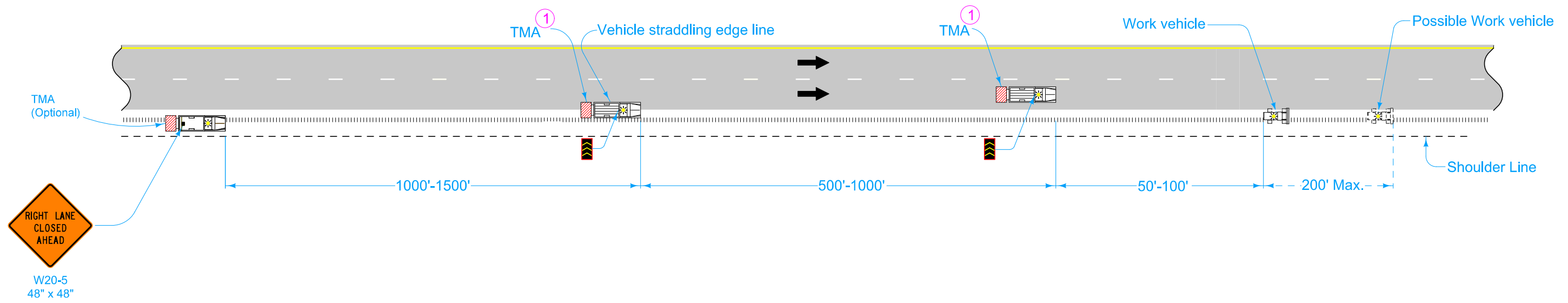


**LEFT LANE CLOSURE**



**RIGHT LANE CLOSURE**



Possible Contract Item:  
Traffic Control

Equip all vehicles with an amber revolving light or amber strobe light.

When fog sealing the milled rumble strips, place a 48" X 48" FRESH OIL sign (W21-2) at the beginning of the work area. Place additional FRESH OIL signs after each intersection and periodically through the work area so that signs are no more than 2 miles apart.

Operators should adjust their spacing, as necessary, to keep adjacent vehicles within view.

① TMA required for speed limits of 55 mph or greater.

LEGEND	
	Traffic Sign
	Arrow Board
	Truck Mounted Attenuator (TMA)
	Direction of Traffic

	REVISION
	5   10-17-17
<b>STANDARD ROAD PLAN</b>	
REVISIONS: Added Circle Note 1.	
APPROVED BY DESIGN METHODS ENGINEER	
<b>SHOULDER RUMBLE STRIP OPERATIONS</b>	