

CPN Data Instructions; Model, Data, and Attachment

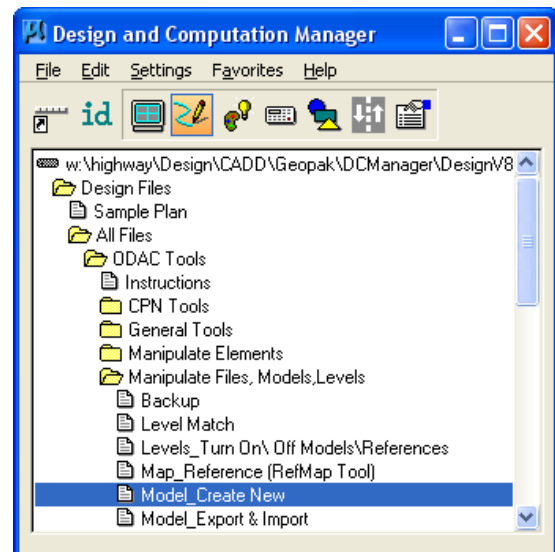
Design Manual
Chapter 21
Automation Tools
Instructions

Original Issue: 03-06-09
Revised: 04-30-09

The CPN Model

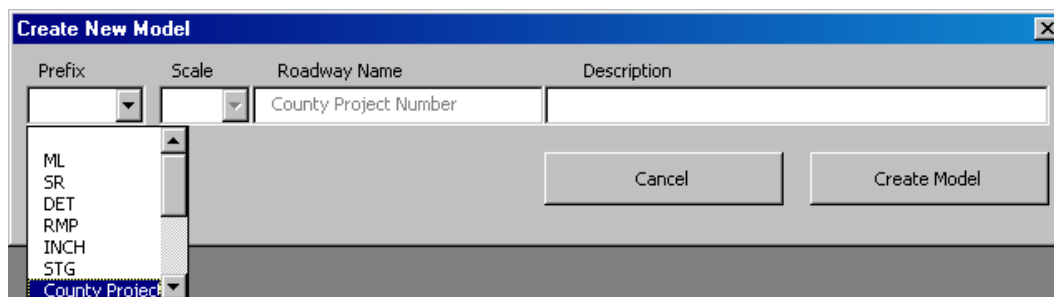
The **CPN** model, (**County & Project Number**), should be created in the Design file, (.dsn, .geo, .sol, etc), using the **Model_ Create New** tool, accessed from the Geopak: D&C Manager, as shown at the right.

(If the item is not found as shown, use the *D&C > Edit > Find* tool to locate it.)



NOTE: Do not use the MicroStation **Create New Model** command, as it will not provide the correct model name for the new CPN model, as used in the Office of Design.

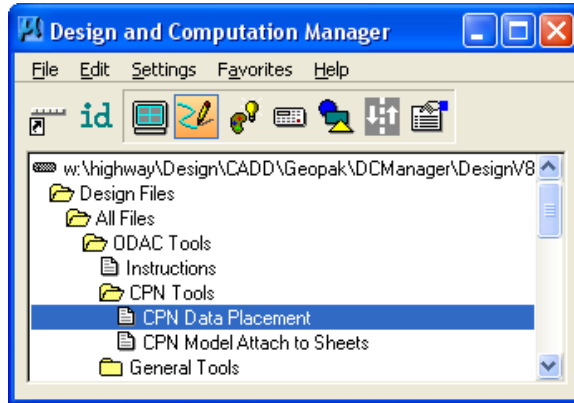
When the **County Project Number** option has been chosen from the **Prefix** drop down list, the dialog will change, as shown below.



Click the **Create Model** button and the new **CPN** model will be created. The **CPN** model will differ from other models, in that it is not referenced to the other models, and the other models are not referenced to it. For instructions on creating other types of models, see [21A-40](#).

CPN Data and Placement

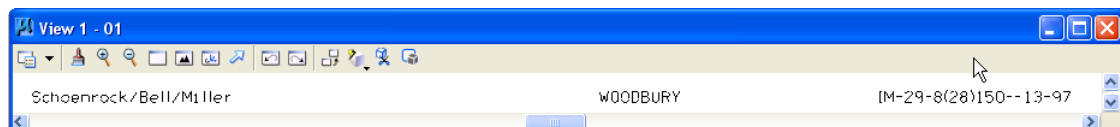
The **CPN data placement** command is accessed from the Geopak: D&C manager, as shown to the right.



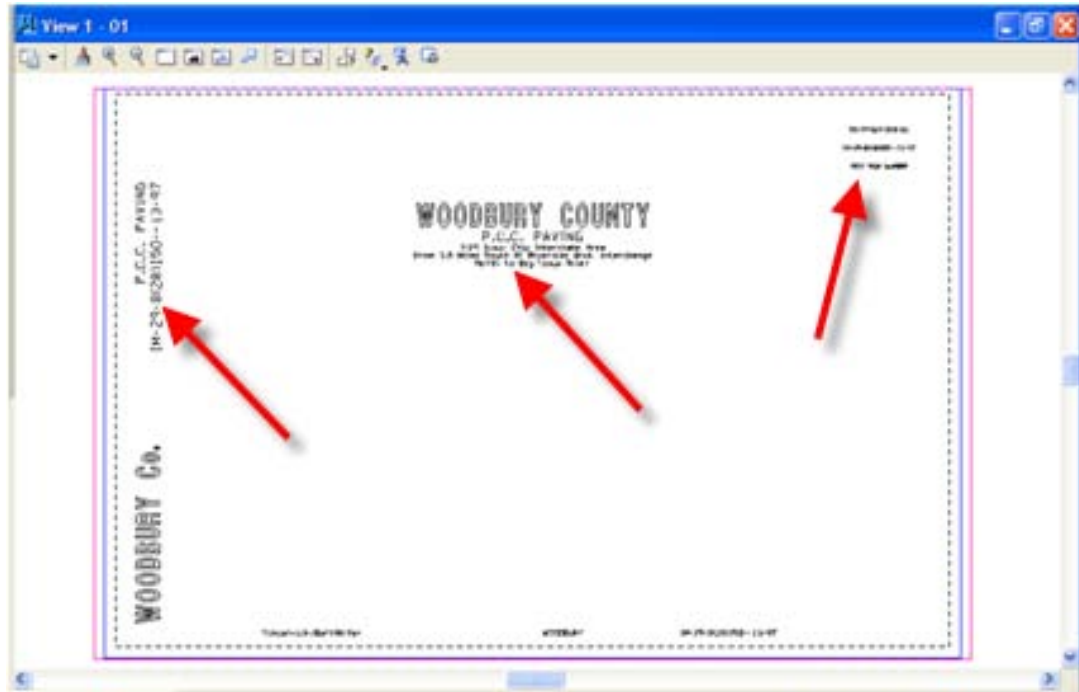
The **CPN Data Placement** command accesses the **CPN Data** dialog, shown below. The only MicroStation elements to be placed in the “CPN” model will be “**County Name, Project Numbers, PIN, Project Description, Work Type**”, etc., as shown in the completed dialog below.

By *clicking* the **OK** button in the dialog above, the information in the text fields will be placed in the “CPN” model, at the correct level, font, sizes and location. If the “CPN data” that is located in the “CPN” model must be changed, simply re-run this tool again. The existing “CPN data” in the model will be captured and displayed in the dialog for review and editing.

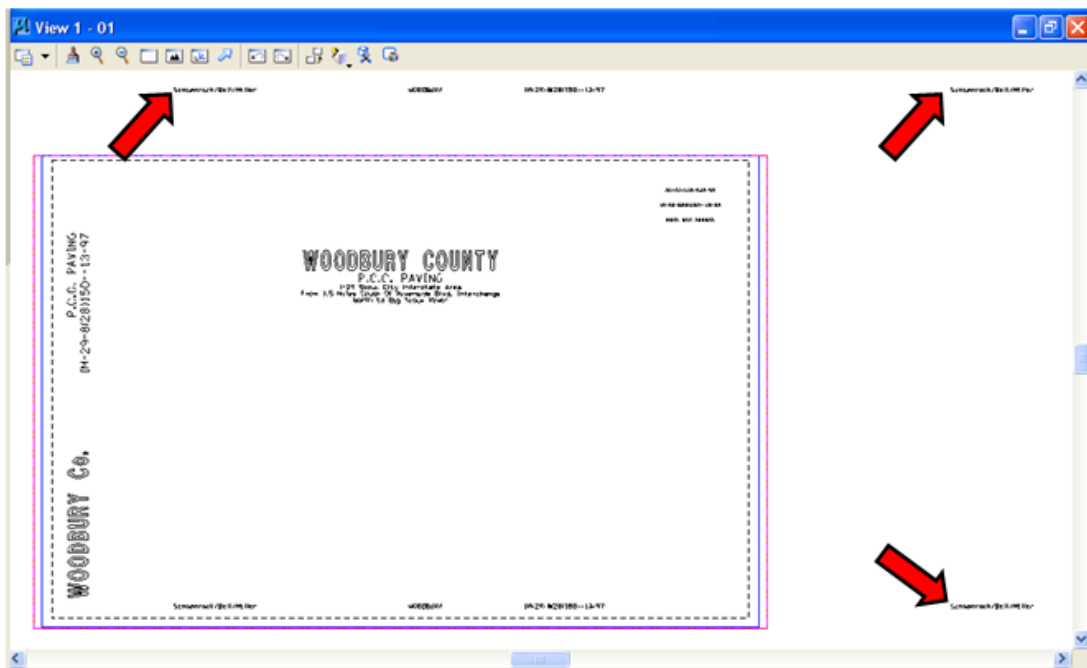
The **CPN** “County and Project Number” information and **Design Team** information, are placed at the bottom of each plan sheet, as shown below.



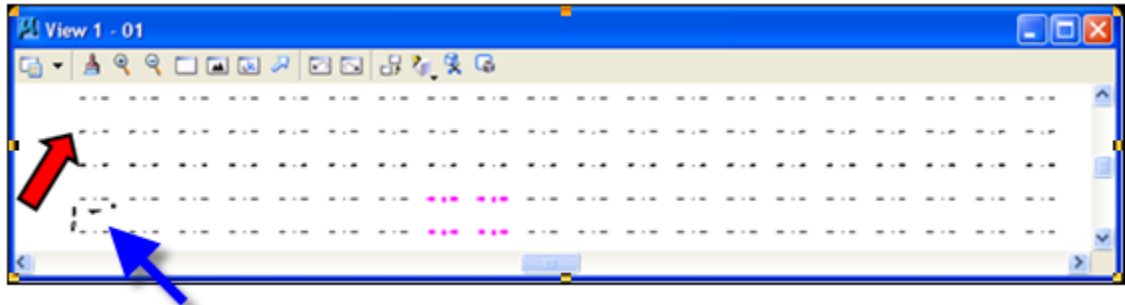
The **CPNdata** command also places additional information, such as **Work Type**, **Work Location**, and the **PIN** information at the correct locations for the Title Sheet, as shown below.



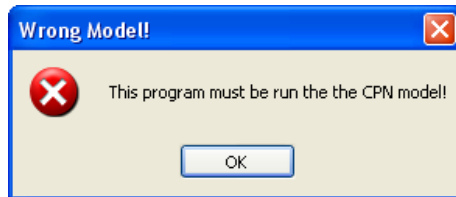
The new **CPNData** placement command places the **County** and **Project Number** and **Design Team** data 100 times, (in five rows of twenty sets), spaced correctly for a multiple sheet “Working” model. The 100-sheet **CPN data** placement is used in the working model of several file types, such as A, B, C, Cross-Sections, etc. The arrows below partially show how the “CPN data” is placed for more than one sheet.



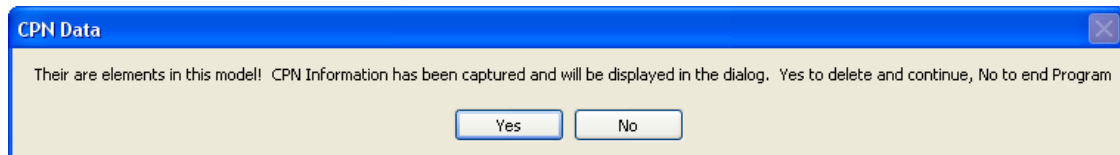
The text in the graphic below is too small to read, but it shows how the “CPN data” is placed 100 times, in five rows, for twenty sheets in each row (red arrow). The additional information at the lower left sheet location, (blue arrow), is the CPN data that is unique to the Title Sheet alone.



The **CPNdata** placement command will only function when accessed from a “CPN model” that has been named “**County Project Number**”. If the command is accessed from a model with any other name, the following error message will display.



If “CPN data” already exists in the model, the dialog below will display, providing the options to continue or stop.



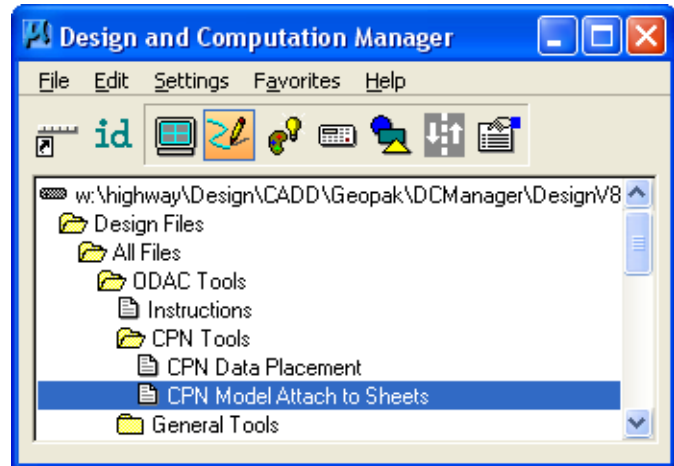
Select “**Yes**” to continue. The existing “CPN data” information will be “captured” and displayed in the **CPN Data** dialog, as shown at the right, and the existing CPN text elements will be deleted from the file.

Complete or edit the information, as necessary, and *click* the **OK** button. The “CPN” model will then be populated with the new information, for 100 sheets.

CPN Data	
County :	BOONE
PIN :	04-08-030-010
Project Number :	BRF-030-4(69)--38-08
Work Type :	BRIDGE REPLACEMENT - PPCB
Project Location	
Line 1 :	U.S. 30 over Bever Creek
Line 2 :	0.8 mi. E. of the Greene Co. line.
Line 3 :	
Design Team :	Schoenrock Walker
Right of Way Numbers	
ROW Number 1	NH5N-030-4(70)--2R-08
ROW Number 2	
ROW Number 3	
<input type="button" value="Cancel"/> <input type="button" value="OK"/>	

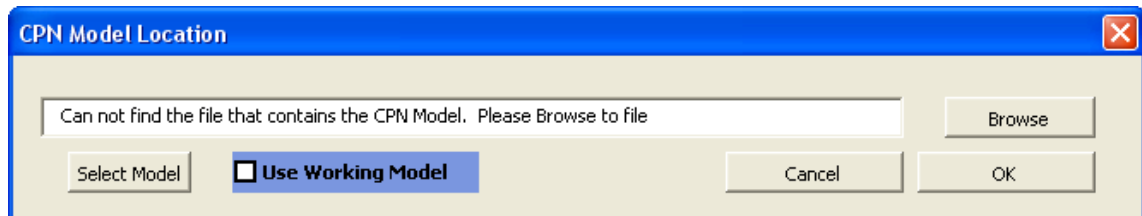
CPN Model, Attach to Sheets

The **CPN Model Attach to Sheets** command is accessed from the **Geopak**: D&C manager, as shown at the right.



This command will attach the **CPN** (**C**ounty **P**roject **N**umber) model information to all specified models in a sheet file.

The **CPN Model Attach to Sheets** command will search the standard directory location for the ".dsn" file containing the **County Project Number** (CPN) model. If the model is not found, the **CPN Model Location** dialog will display, as shown below with the "**Can not find the file ...**" message. *Click* the **Browse** button and select the file containing the "CPN" model.

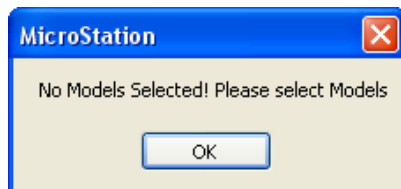


If the "CPN data" is to be attached to multiple sheets in the "Working" model, check the **Use Working Model** check-box ()

If the "CPN data" is to be attached to several individual sheet models, each containing a single sheet, *click* the **Select Model** button, which will produce the **Select Model** dialog, shown two dialogs below.

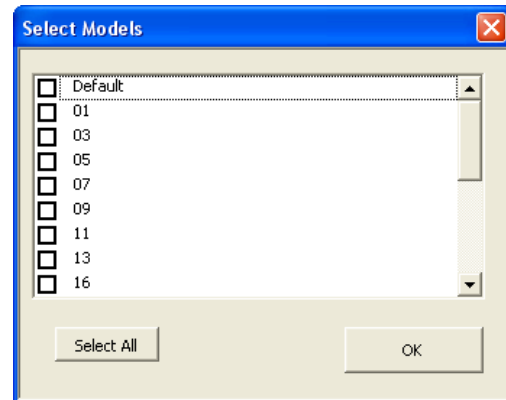
The following dialog will display if:

1. The check-box is checked, () and there is no "Working" model, or
2. The **OK** button is *clicked* before any models have been selected.

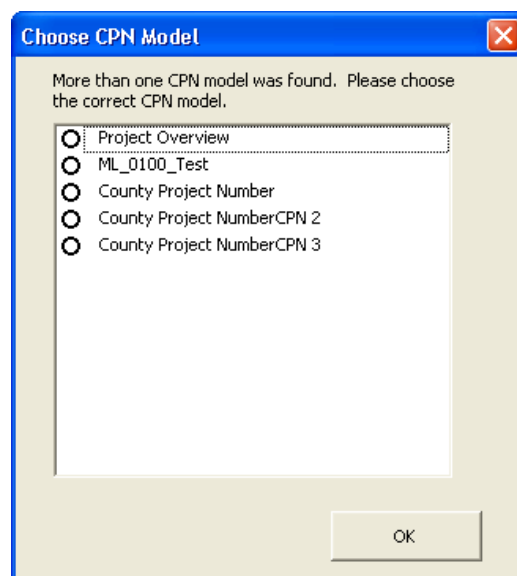


Click the **OK** button (above) or the **Select Model** button, (on the previous dialog), and the **Select Models** dialog will display, shown below.

Select the desired models to receive the **CPN** attachment and then *click* **OK**. *Clicking* the **OK** button will begin the process of attaching the **CPN** reference attachment to the selected models.



If more than one **CPN** model is found within the selected design file, the **Choose CPN Model** dialog will be displayed, as shown below.



Select the correct **CPN** model and click the **OK** button. This will cause the “CPN Attachment” program to attach the chosen **CPN** model to all of the selected models, at the appropriate scale, location, and rotation on the sheet borders.

NOTE: Attaching the “CPN” information to several “sheet” models is presently a relatively slow process; therefore do not select unused models, which would cause the program to perform unnecessary tasks.

The **Please Wait** dialog will display while the program is running and will disappear when done.

