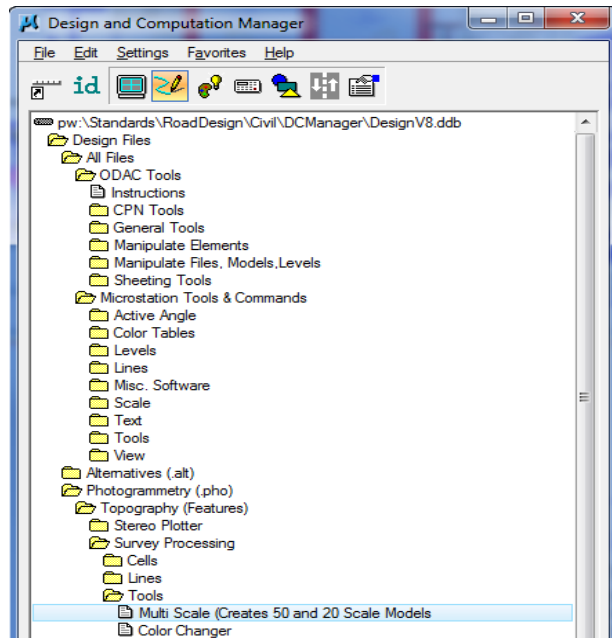


Multi Scale Creator

Design Manual
Chapter 21
Automation Tools

Originally Issued: 09-20-10
 Revised: 10-13-14

This tool can be accessed from the Geopak: D&C Manager, as shown at the right. If the item is not found as shown, use the *D&C > Edit > Find* tool to locate it.

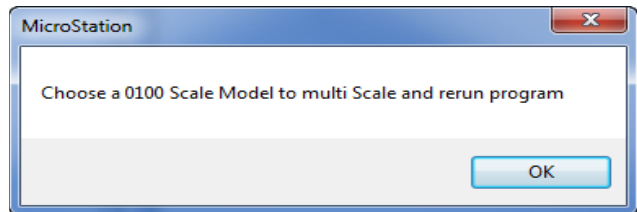


This program was developed for use on the original photogrammetry file 100 scale survey model. It will create two scaled copies of the model: one at 50 scale and one at 20 scale. The program makes a copy of all elements and then scales the elements that are scalable, such as text, cells, and custom line styles (including fence lines, utility lines, etc.). Text and cells are scaled about their origins. The program assigns names to the newly copied models by starting with a copy of the 100 scale model name and replacing the "0100" with "0050" and "0020" for the 50 scale and 20 scale models, respectively.

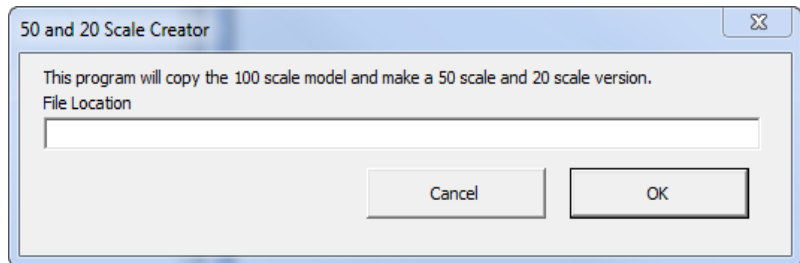


If 50 and/or 20 scale models already exist, this program will delete the existing model(s) and create new models based on the current 100 scale model.

Even though the intended purpose of this program is to create multiple scale models within a "Photo" survey file, it will perform the same function for any model that has "0100" at the correct location in the model name. If the proper naming convention is not found when the program is started, the following dialog to the right will appear.



When the program is started, a dialog, similar to the one shown to the right will display. The message field will display the current file name and location, and the current Source Model name.



The **Cancel** button will end the program. The **OK** button starts the program. When the process is complete, the program will return to the original 100 scale model.

Chronology of Changes to Design Manual Section:

021A-151 Multi Scale Creator

- | | |
|------------|---|
| 10/13/2014 | Revised
Revised images to reflect ProjectWise migration. |
| 9/20/2010 | NEW
This document is an updated Instruction file that is being added to the Design Manual. It is a tool used by Preliminary Survey and Photogrametry |