



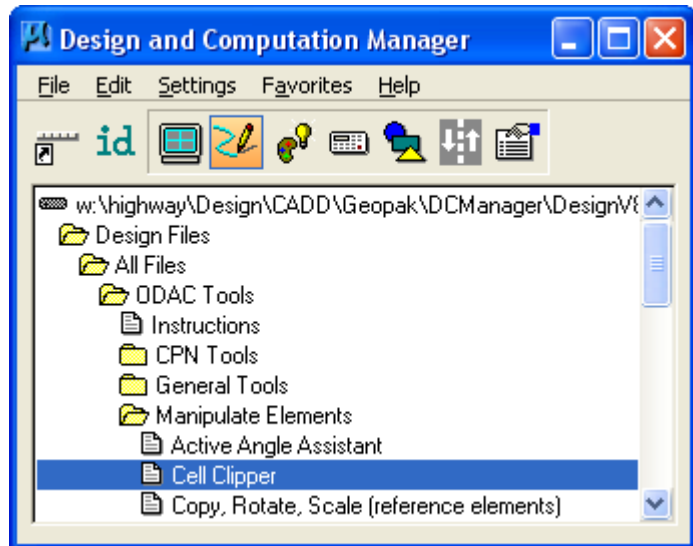
Cell Clipper tool

Design Manual
Chapter 21
Automation Tools
Instructions

Originally Issued: 11-26-08
Revised: 04-30-09

This tool can be accessed from the Geopak:
D&C Manager, as shown at the right.

(If the item is not found as shown below, use
the *D&C > Edit > Find* tool to locate it.)



The **Cell Clipper** program was designed to reduce the size of a "Tabulation cell", (such as 105-4), to a height that is somewhat shorter than the "full sheet height". The program uses a MicroStation "fence border" to "clip" away the unwanted bottom portion of a design plan Tabulation cell. It then returns the remaining elements to "cell status", as described in the program dialog, shown at the right,

