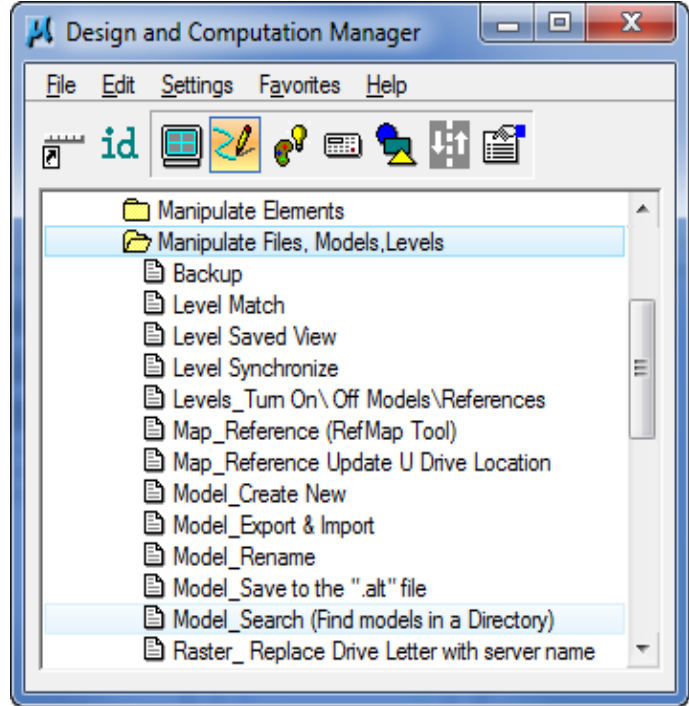


Model Search Tool

Design Manual
Chapter 21
Automation Tool
Instructions

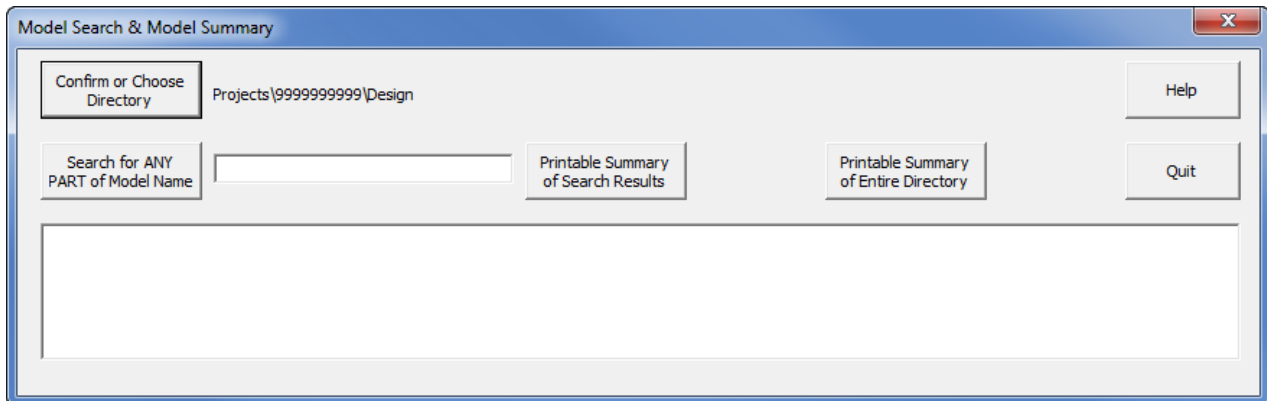
Originally Issued: 12-31-08
Revised: 10-13-14

This tool can be accessed from the Geopak: D&C Manager, as shown at the right. If the item is not found as shown, use the *D&C > Edit > Find* tool to locate it.

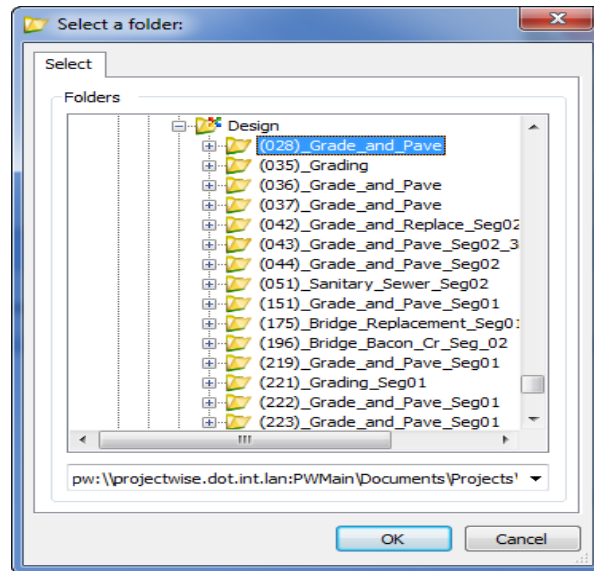


The **Model Search** program can be used to search a chosen directory and all of its subdirectories for a MicroStation file model name or partial model name. The program can then create a printable listing displaying the results of the search, or it can display a printable summary of every MicroStation file and model within the chosen directory.

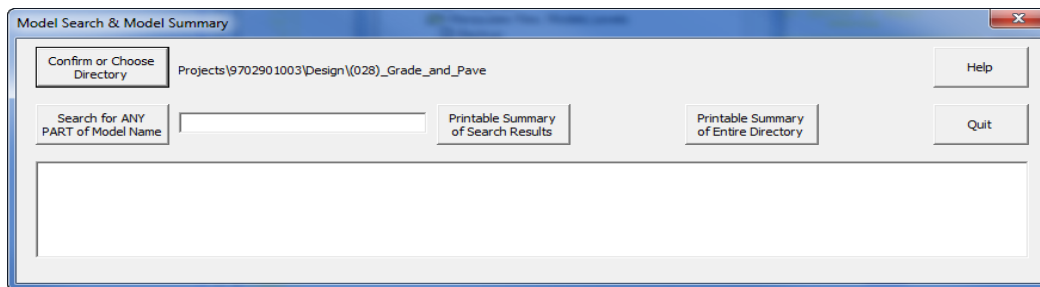
When the program is started, the current file directory will display as the default directory choice. *Click* the **Confirm or Choose Directory** button to move to the next dialog.



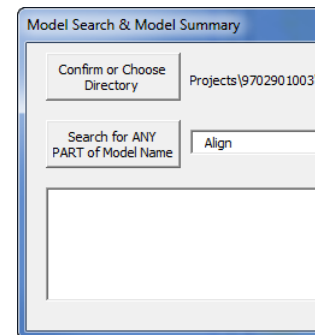
The **Browse for Folder** dialog will then display with the current directory selected (highlighted) as shown below. *Click* the **OK** button or browse to the directory to be searched or summarized, then *click* **OK**.



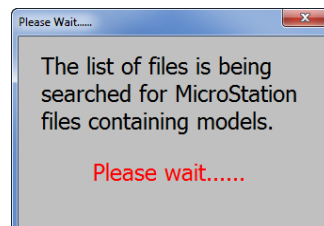
After the directory has been selected, the program options will be revealed, as shown below.



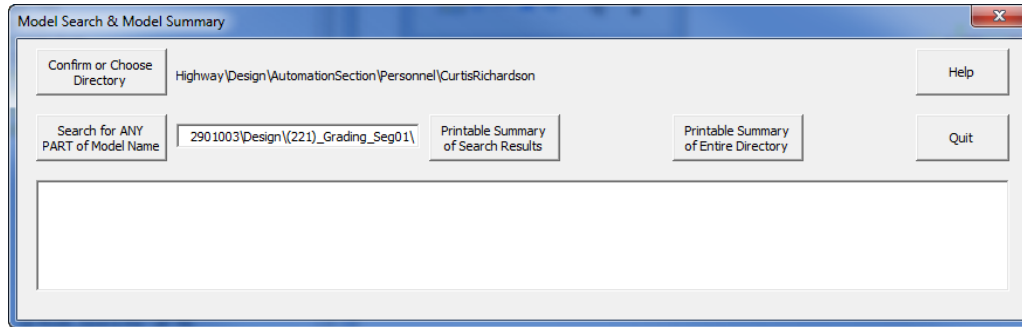
To search the selected directory for a specific model name or partial model name, enter the information in the text entry field, as shown at the right, with the “**Align**” entry. Any portion of the model name may be entered as search criteria.



When the data entry is complete, *click* the **Search for ANY PART of Model Name** button. While the program is searching for the requested data, the **Please wait.....** dialog should appear, as shown below.



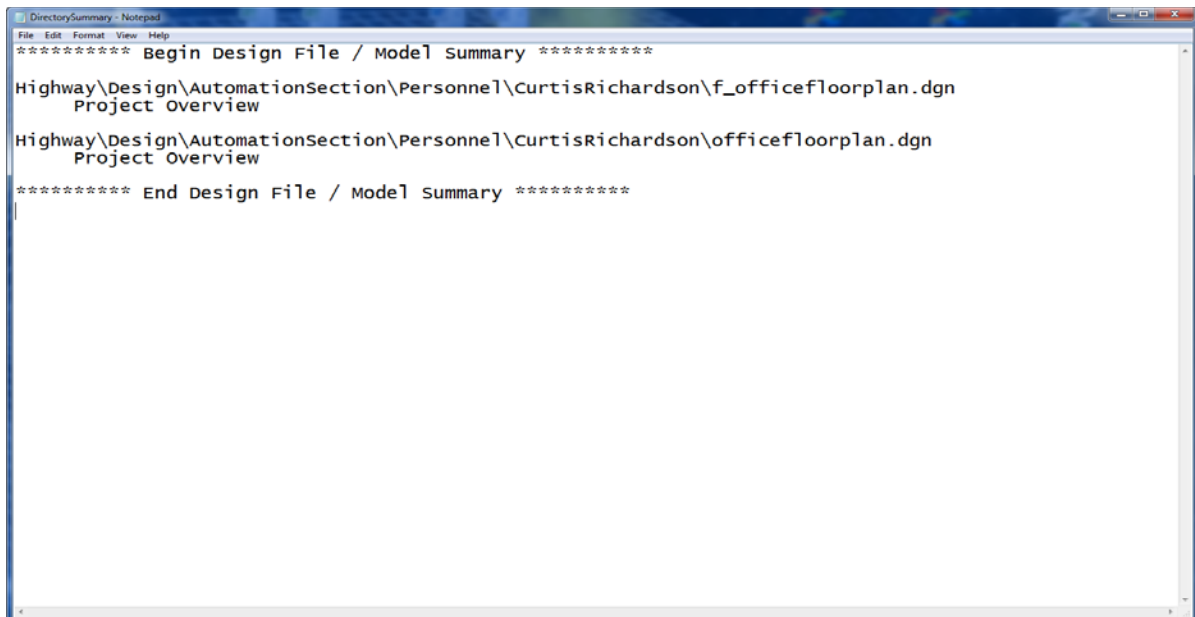
When the search is complete, the results will be displayed, as shown in the list box below.



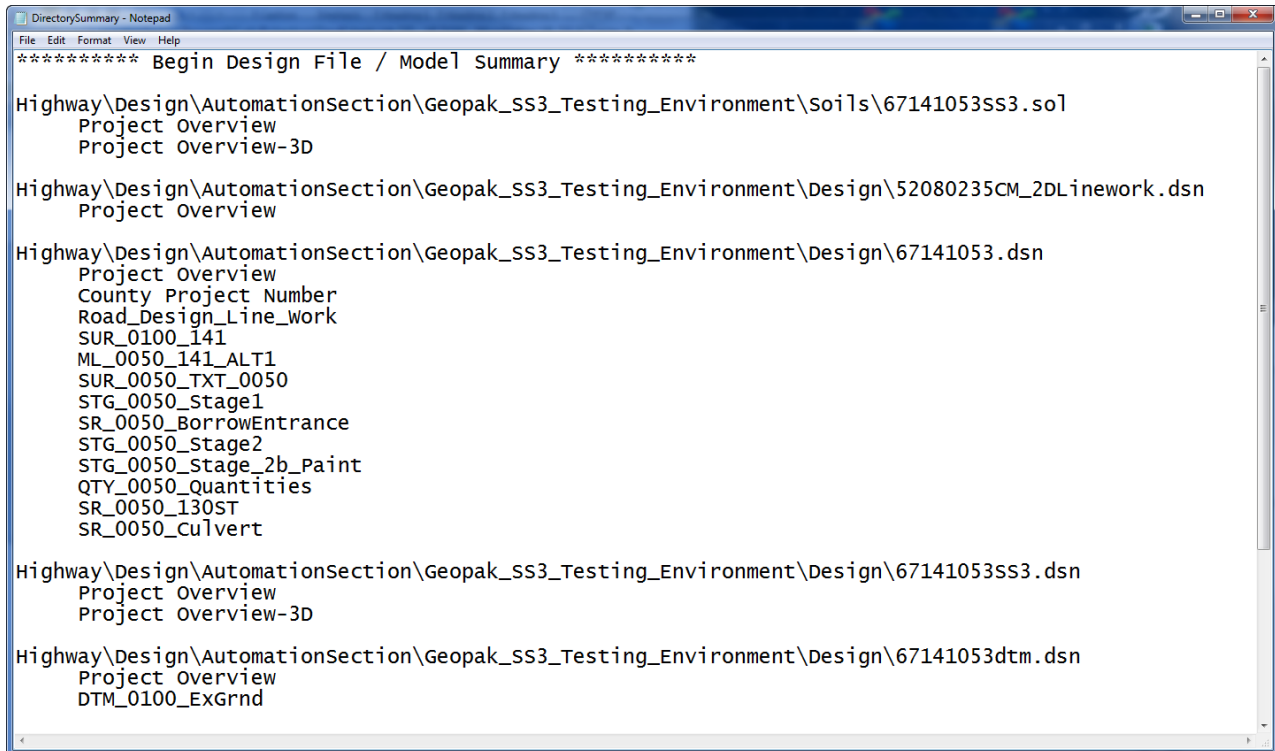
A *double-click* on any entry in the list box, shown above, will automatically open that file and model.

Note: Opening a file in the method described above does not add the file name to the “file open history” list.

If a printed copy of this model list is desired, *click* the **Printable Summary of Search Results** button to produce a printable listing, as shown below.



If a printable listing is desired of all MicroStation files and models contained within the selected directory, *click* the **Printable Summary of Entire Directory** button. This will include all subsequent subdirectories, files, and models. The listing produced will resemble the list shown below, but may possibly be much larger.



```
DirectorySummary - Notepad
File Edit Format View Help
***** Begin Design File / Model Summary *****

Highway\Design\AutomationSection\Geopak_SS3_Testing_Environment\Soils\67141053SS3.sol
Project Overview
Project Overview-3D

Highway\Design\AutomationSection\Geopak_SS3_Testing_Environment\Design\52080235CM_2DLinework.dsn
Project Overview

Highway\Design\AutomationSection\Geopak_SS3_Testing_Environment\Design\67141053.dsn
Project Overview
County Project Number
Road_Design_Line_Work
SUR_0100_141
ML_0050_141_ALT1
SUR_0050_TXT_0050
STG_0050_Stage1
SR_0050_BorrowEntrance
STG_0050_Stage2
STG_0050_Stage_2b_Paint
QTY_0050_Quantities
SR_0050_I30ST
SR_0050_Culvert

Highway\Design\AutomationSection\Geopak_SS3_Testing_Environment\Design\67141053SS3.dsn
Project Overview
Project Overview-3D

Highway\Design\AutomationSection\Geopak_SS3_Testing_Environment\Design\67141053dtm.dsn
Project Overview
DTM_0100_ExGrnd
```

Note: The program will only analyze and list MicroStation V7 and V8 files, and it ignores DWG, DXF, and all other file types. MicroStation V7 files contain no models and therefore will not be displayed in the “model name” search listing. However, V7 files will display as part of a Printable Summary of Entire Directory listing.

Chronology of Changes to Design Manual Section:

021A-044 Model Search Tool

10/13/2014 Revised
Revised images to reflect ProjectWise migration.

5/29/2009
Previously Updated.