

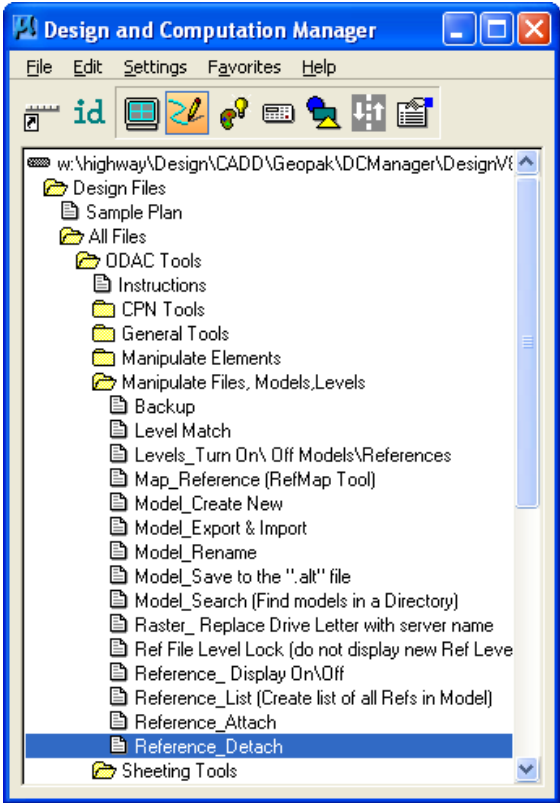
# Reference Detach

**Design Manual**  
**Chapter 21**  
**Automation Tools**  
**Instructions**

Originally Issued: 12-31-08  
Revised: 05-29-09

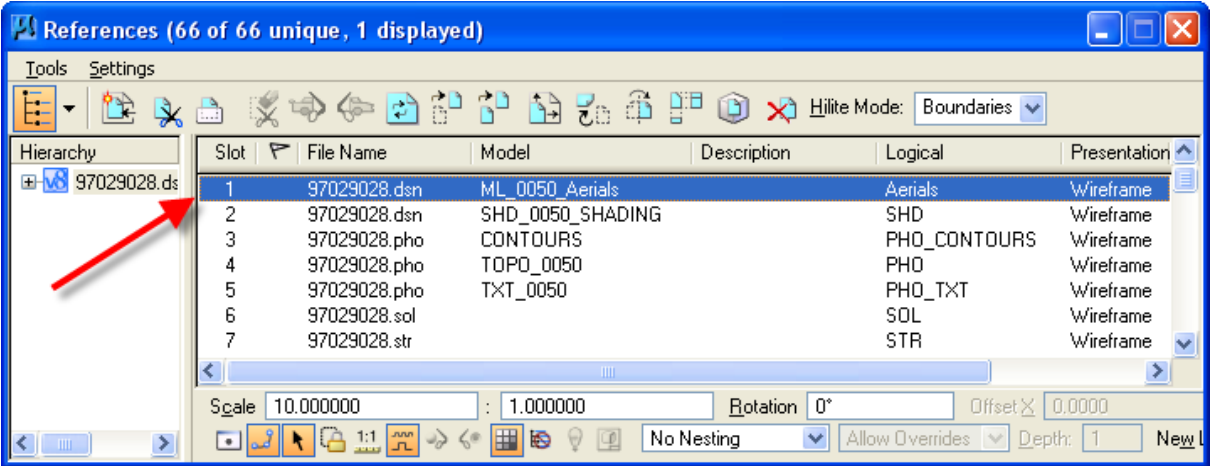
This tool can be accessed from the Geopak: D&C Manager, as shown at the right.

(If the item is not found as shown, use the *D&C > Edit > Find* tool to locate it.)



This command will detach one specific reference file attachment from one model or many selected models simultaneously. *Double-clicking* the **Reference Detach** tool will activate both the **References** dialog and the **Detach Reference File in all Models** dialog, as shown below.

The **References** dialog is displayed merely for information to assist in completing the data entry in the **Detach Reference File in all Models** dialog.



When the check-box is *checked*, () , for the **Use File and Model Name** option in the **Detach Reference File in all Models** dialog, (shown below), the **Logical Name** fields are “grayed out”, making them unavailable. When the program starts, this check-box is *checked*, () , by default. When *checked*, this forces the use of the **File Name** and **Model Name** fields. Selections in the **File Name** and **Model Name** fields are made from the *drop-down* option lists.

When the **Use File and Model Name** check-box is NOT *checked*, () , the **Logical Name** fields become available and the **File Name** and **Model Name** fields then become “grayed out” and unavailable . The default information displayed in the **Logical Name** data entry fields will be for the Reference File attachment in Slot # 1, as shown in the **References** dialog above. This data should be changed, as necessary.

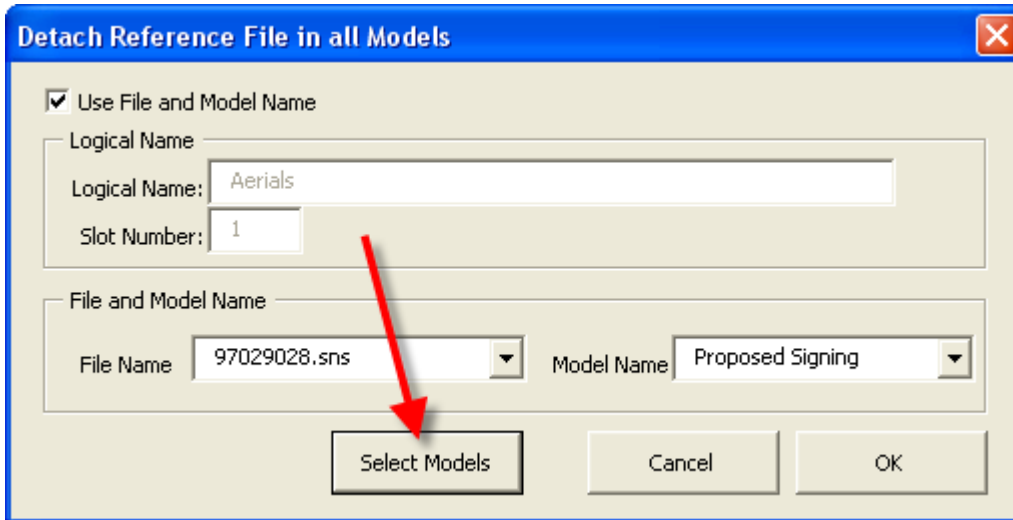
Using either option, (**Logical Name** or **File and Model Name**), one reference attachment must be selected to be detached.

**NOTE:** If the correct model names do not appear in the Model Name list, cancel the program and start again.

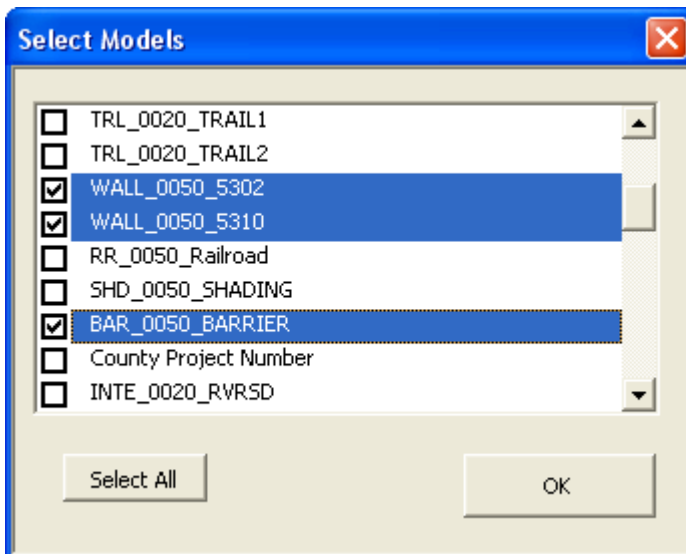
**NOTE:** If the file is a V7 upgrade file, the Default model may display as blank, with no model name, in which case you should use the Logical Name option to select the reference file.

The screenshot shows a dialog box titled "Detach Reference File in all Models". At the top, there is a blue header bar with a close button (X) on the right. Below the header, there is a checked checkbox labeled "Use File and Model Name". Underneath, there are two main sections. The first section, "Logical Name", is active and contains a text field labeled "Logical Name:" with the value "Aerials" and a smaller text field labeled "Slot Number:" with the value "1". A red arrow points to the "Logical Name" field. The second section, "File and Model Name", is grayed out and contains two dropdown menus labeled "File Name" and "Model Name". At the bottom of the dialog, there are three buttons: "Select Models", "Cancel", and "OK".

After using one of the above listed options to select a reference file for detachment, *click* the **Select Models** button, (shown below), to display the **Select Models** check-box, (☑), dialog listing, shown further below.



In the **Select Models** dialog, the models to be affected should be checked, as shown below. After all the desired models have been selected, *click* the **OK** button in the **Select Models** dialog. The reference will be detached from all selected models.



When all detachments are complete, *click* the **OK** button in the **Detach Reference File in all Models** dialog, which will terminate the program.