

# Drive Roadway - Corridor Modeler

Design Manual  
Chapter 21  
Automation Tools  
Instructions  
Originally Issued: 06-30-11

## Overview

Drive Roadway procedure allows you to view the path a driver would take along a roadway. It also generates a 3D line string along the path which might be used to control a camera position along the roadway.

## Prerequisites

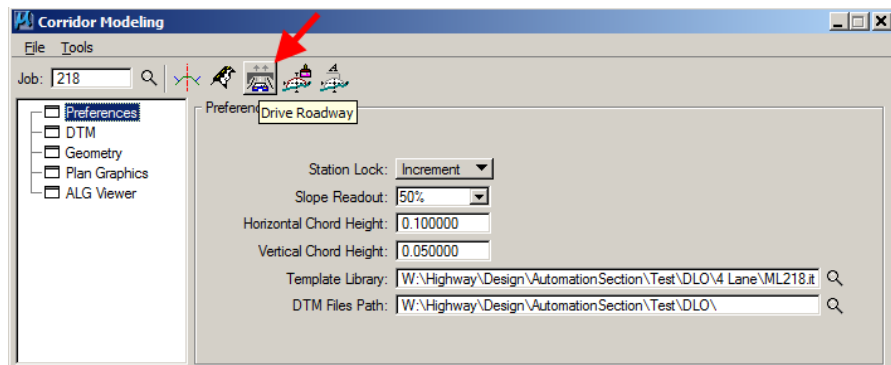
- A “.gpk” file containing both horizontal and vertical alignments
- Corridor(s) defined in Roadway Designer
- Corridor(s) drawn with either features or components

## Process

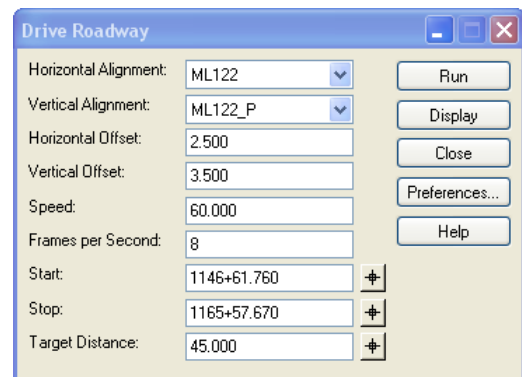
Access the Corridor Modeling dialog as follows:

**Applications > Geopak > Road > Corridor Modeling**

From the **Corridor Modeling** dialog, access the **Drive Roadway** dialog, as shown by the red arrow at the right.



The above steps will display the **Drive Roadway** dialog, as shown at the right.



*The following is a repeat of the information found in the Bentley help file.*

### Horizontal Alignment

defines the horizontal alignment along which the driver will take. Select an alignment from the combo box.

### Vertical Alignment

defines the vertical alignment selected for vertical control. Select an alignment from the combo box, which displays the vertical alignments for the selected horizontal alignment.

### Horizontal Offset

defines distance of the driver from the alignment. A negative value is left of the alignment.

### Vertical Offset

defines the vertical distance from the alignment. A negative value is below the alignment.

### Speed

defines the speed of the vehicle. This value is used to calculate.

### Frames per Second

specifies how many frames are needed for a smooth animation for video. Most animations are 20-30 frames per second of video. If the frame number is too high, then the display may not be fast enough and the graphics will not be visible in the Run mode.

### Start

specifies the beginning station.

### Stop

specifies the ending station.

### Target Distance

defines the projected distance (how far ahead the driver can see). This value would make a difference going around a curve. This parameter is used only in Run mode.

### Run

steps you through the frames from beginning to ending stations. Click the escape key to interrupt the viewing process.

### Display

places a 3D linestring into the design file with active symbology.

### Close

exits the dialog. The values are maintained between working sessions.

### Preferences

opens the Preferences dialog box which allows you to load or save settings to the preferences file.

### Help

displays help.

# Chronology of Changes to Design Manual Section:

## 021B-290 Drive Roadway-Corridor Modeler

6/30/2011	NEW
	New