



View Groups vs. Models

Design Manual
Chapter 21
Automation Tools
Instructions
Originally Issued: 03-31-09
Revised: 06-30-10

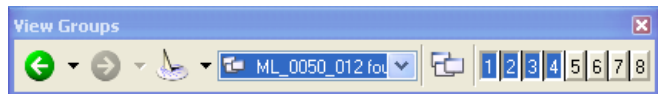
Index

- [View Group Access](#)
- [View Groups vs. Models](#)
- [The “MicroStation” method of creating a new model, and View Group](#)
- [The “Design” method of creating a new model, and View Group](#)
- [View Groups](#)
 - [To create a View Group when not creating a model](#)
 - [To change the active View Group](#)
 - [To modify a View Group](#)
 - [To delete a View Group](#)

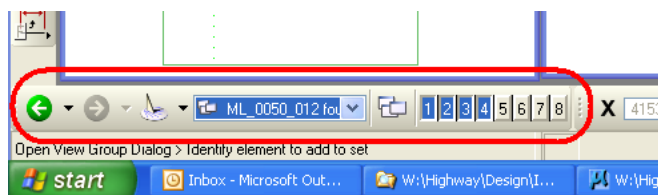
View Group access

The **View Groups** Tool Box is accessed from the pull-down menu *Tools > Tool Boxes > View Groups*, and depending on the selected options to display, the tool box may resemble the following:

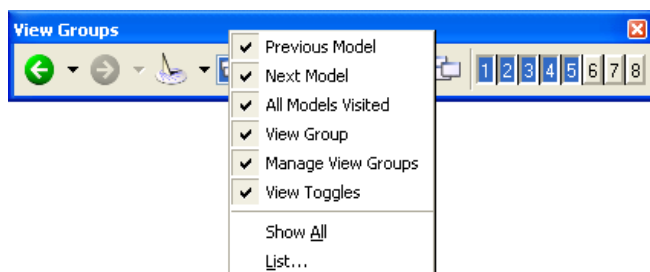
(It is “undocked” below, therefore displaying the title bar.)



The **View Groups** Tool Box is commonly docked at the lower left corner of the MicroStation window, as shown below.



Right-clicking within the **View Groups** tool box shows the available “display options”, as shown below.



View Groups vs. Models

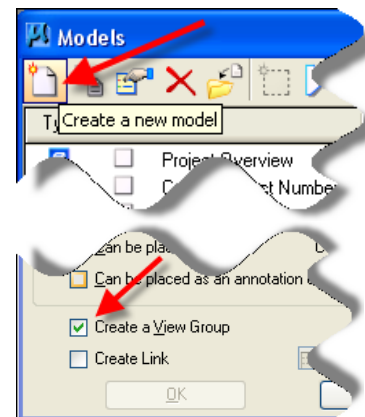
Even though some people use the **View Group** selection box to change models, **View Groups** are not **Models**, and **Models** are not **View Groups**, and they should not necessarily be used interchangeably. **View Groups** store much more information than just the model name, therefore, using the **View Group** selection box to change models may or may not produce the anticipated results.



The “MicroStation” method of creating a new model, and View Group

When the MicroStation **Create a new model** tool is used, as shown at the right, (which we don’t use), the **Create Model** dialog displays, which is partially shown below, right. At the lower left corner of the **Create Model** dialog, the *check-box*, , option exists to **Create a View Group** at the same time the model is created. If this option is checked, a **View Group** will be created with the same name as the new model, with a suffix of “Views”.

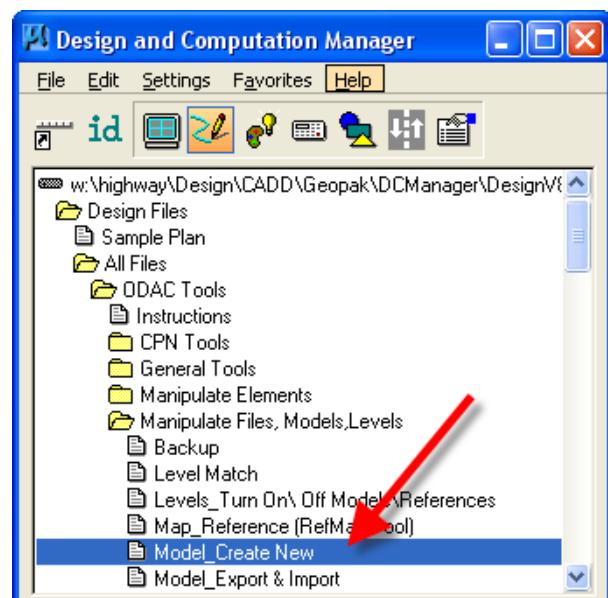
Also, when using the MicroStation **Create a new model** tool, the option exists to use either a separate seed-file or to use the current open model as the seed-file. In either case, the window attributes of the selected option will become the window attributes of the new **View Group**.



The “Design” method of creating a new model, and View Group

In Design, the **Create New Model** command is accessed through Geopak D&C Manager, as shown at the right.

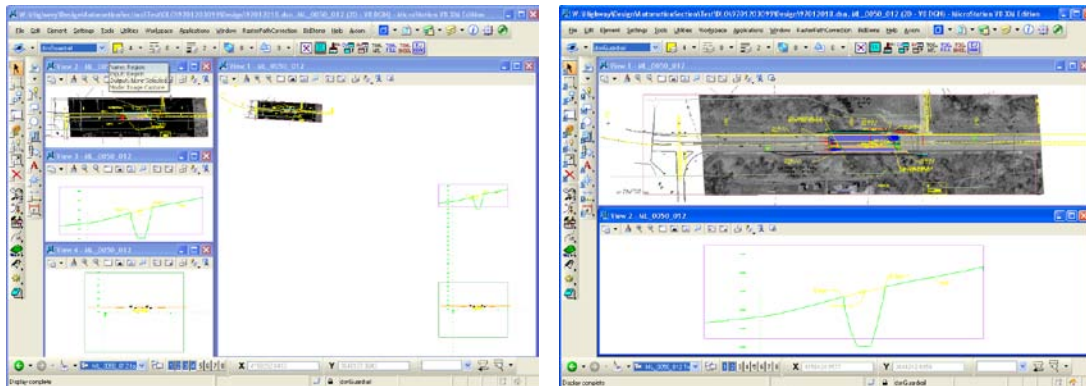
When the “Design” **Create New Model** command is used, a **View Group** is created automatically, and the Project Overview model is used as the seed-file, or template.



View Groups

A **view group** is a set of view window layouts applicable to a model within the open DGN file. View groups make it easy to access and navigate through different models, with different view group configurations for different design purposes. View groups let you set up your view window preferences including the number of open views, view size, and orientation. A view group definition also includes the attributes for each view and the level display settings.

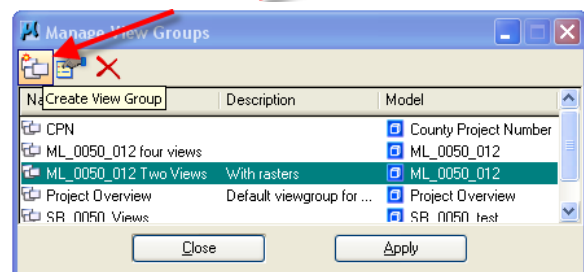
Using view groups, you can quickly change from one configuration to another. For example, while sheeting P&P sheets, you might prefer to arrange the views with one overall “fit view”, and three separate smaller views for Plan, Profile, and DBG information, as shown at the left, below. However, when working in the Plan or Profile area, you might prefer two larger views, as shown on the right, below. Creating separate **View Groups** allows for the quick and consistent window configuration changes.



NOTE: When you save settings (*File > Save Settings*), view groups that have changes are saved.

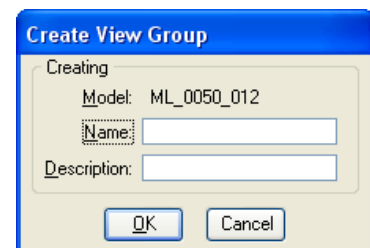
To create a View Group when not creating a model

1. Set up the view windows in your preferred view windows configuration.
2. Access the **Manage View Groups** dialog from the **Manage view Groups** icon, as shown at the right.
3. Click the **Create View Group** icon.



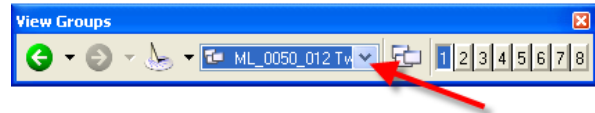
This opens the **Create View Group** dialog, as shown at the right.

4. Complete the **Name** and **Description** fields, shown at the right. The Model with which this **View Group** is associated already is noted on the dialog box.
5. Click **OK**. The new view group is created.



To change the active View Group

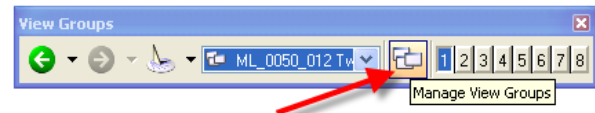
From the View Groups window's option menu, select a different view group, as shown at the right.



Or, in the **Manage View Groups** dialog box, select the View Group and click **Apply** (or simply *double-click* the required view group). Your screen will update to show the new display configuration.

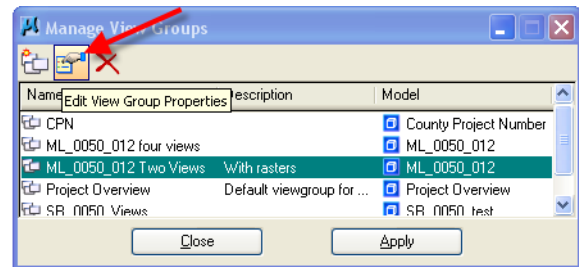
To modify a View Group

1. In the **View Groups** window, click the **Manage View Groups** icon.



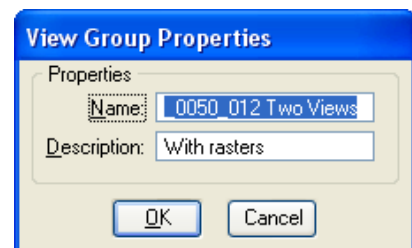
The **Manage View Groups** dialog box opens.

2. Select, (highlight), the desired **View Group** name and *click* the **Edit View Group Properties** icon.



The View Group Properties dialog box opens, as shown at the right.

3. Make the appropriate changes to the **Name** and **Description**.
4. Click **OK**.



To delete a View Group

1. In the **View Groups** window, (as shown above in the **Modify View Group** discussion), *click* the **Manage View Groups** icon. The **Manage View Groups** dialog opens, (as shown at the right).
2. Select the required view group.
3. *Click* the **Delete View Group** icon, (the red "X").

The highlighted view group will be deleted.



Chronology of Changes to Design Manual Section:

021C-055

View Groups vs Models

6/30/2010 Revised

Added Index and updated format