



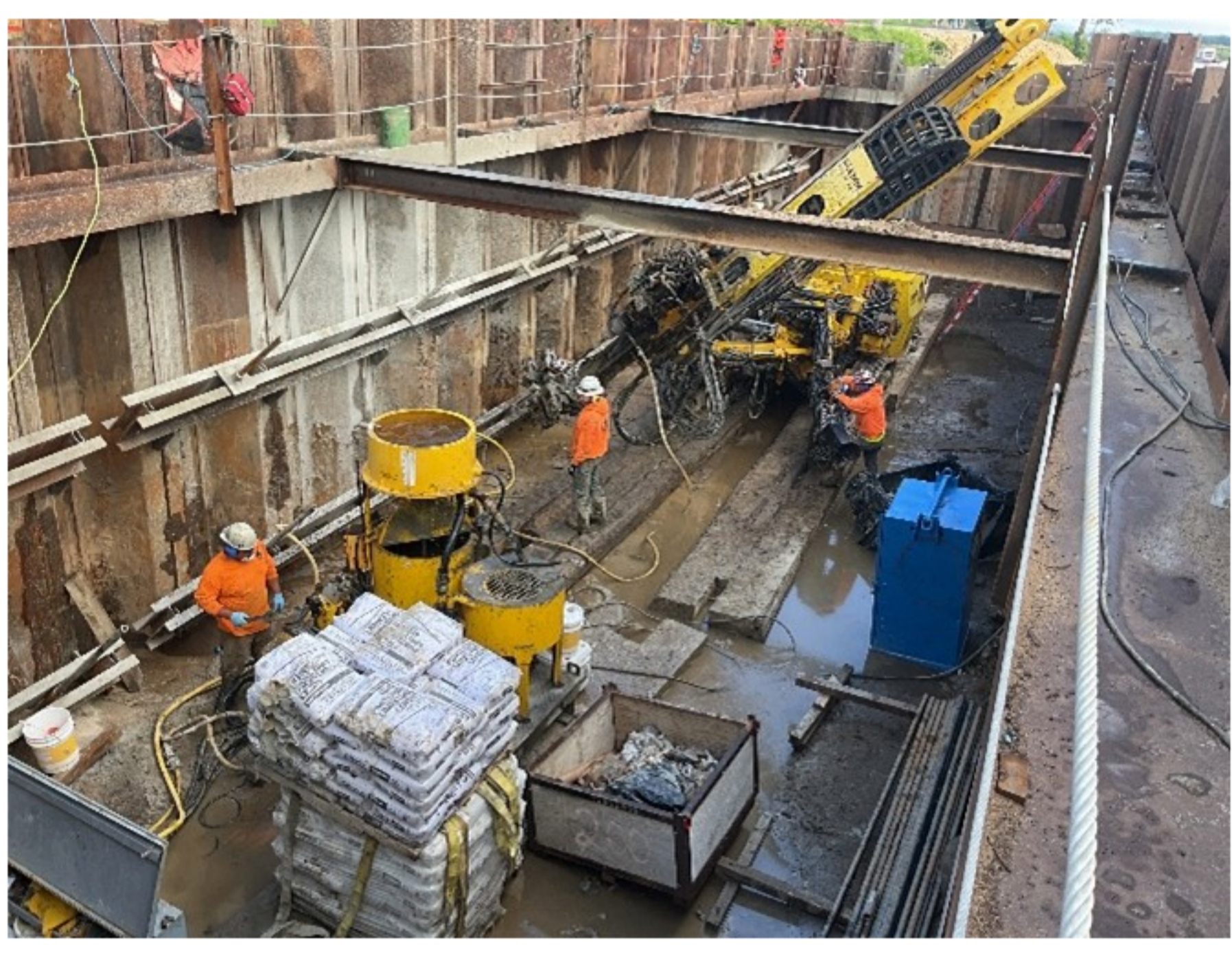
LANSING BRIDGE CONSTRUCTION

For our second update in a row the biggest story at the construction site of the new Mississippi River Bridge at Lansing is the rain. The storms that have hit so much of Iowa did not miss the northeast corner of the state where Kraemer North America is doing a great job to keep the project on schedule. This excessive amount of precipitation the past several weeks has made things a little more complicated. From high water on the Mississippi River itself to wet and sloppy conditions at the construction site, workers have met the challenges to move the project forward. That has included using pumps to dewater work areas. Despite these obstacles Kraemer NA has made progress on construction of the bridge.



Standing Water

That progress includes getting things ready in the cofferdam on the Iowa side of the river. This structure will provide a dry work area for the contractor to build the substructure for pier one on the west shore of the Mississippi River. Sheet piles were driven deep into the ground to create the structure. The contractor just recently finished installing tiebacks in the cofferdam. These tiebacks are long rods that are drilled through the sheet pile and into the surrounding ground at an angle. A plate is then attached to the rod inside the cofferdam to stabilize the sheet piles and keep the crews safe.



Tieback Installation

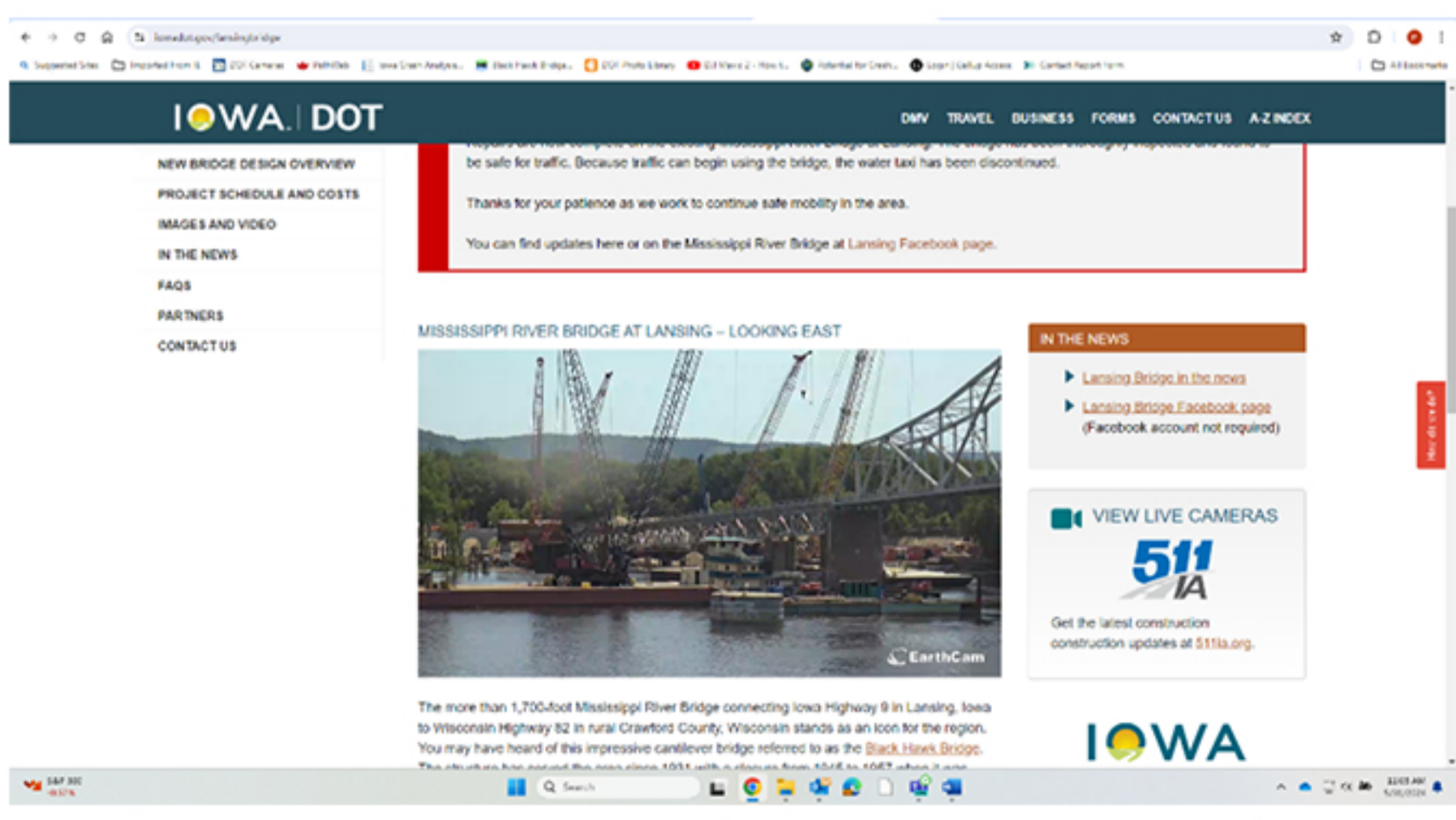
Across the river on the Wisconsin shoreline, it's time to build a cofferdam for pier 3. Now that the drilled shafts have been completed it's time to pour the footing for the pier. Like the cofferdam made of sheet piles on the Iowa side, this structure will help keep the work area dry so crews can form up and build the substructure for the pier.

Work isn't just happening on the shorelines, there is still a lot happening in the river at the site of pier 2. Now that the pile has been driven the contractor is completing the structure that will assist them in the exact placement of the drilled shafts. This template will guide the contractor when they start drilling the shafts. This template will guide the contractor when they start drilling the shafts that will support the footing for pier 2. Expect to see the large drilling equipment and casing on barges at this location soon.



Pier 2 Template

If you haven't already, make sure to check out the website for this project at <https://iowadot.gov/lansingbridge>. When the contractor starts installing the casings and drilling out the shafts you will get a good look at what's happening with the live webcam you can access on this website.



Also, make sure you follow the project Facebook page at <https://www.facebook.com/LansingBridge> for updates. You do not have to be a Facebook member to check out the page.

