



IOWA DOT OVERSIGHT OF LPA PROJECTS

Nicole Moore, P.E.

Deputy Director, Local Systems Bureau



ADMINISTERING BUREAU

Systems Planning Bureau

- Revitalize Iowa's Sound Economy (RISE)
- Iowa's Transportation Alternatives Program (TAP)
- Federal & State Rec Trails
- Iowa Clean Air Attainment Program (ICAAP)

Local Systems Bureau

- Most projects on a highway or bridge (except as noted to the left)
- Federal-aid
- Swap
- Farm-to-Market

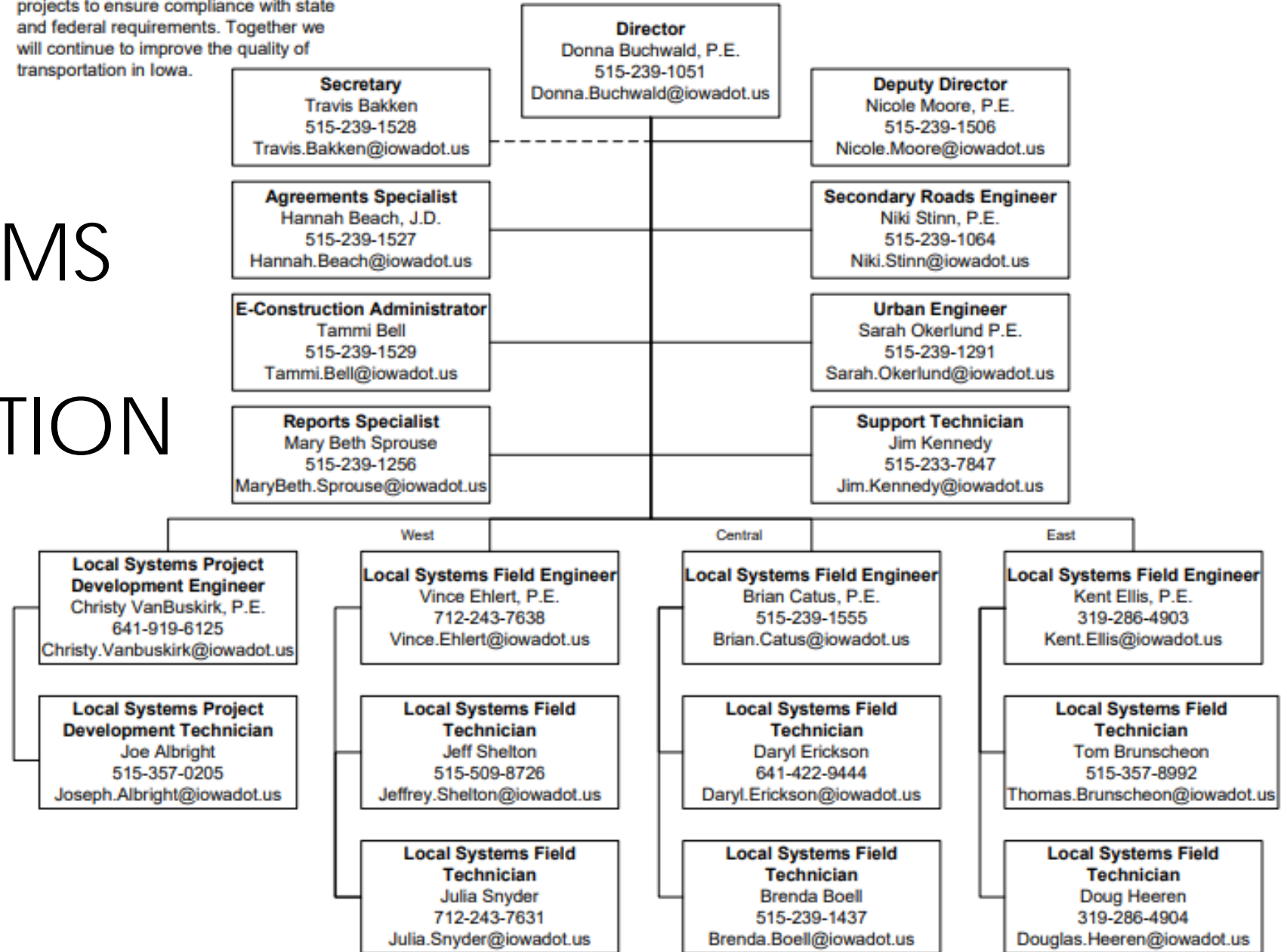
Local Systems Bureau

Organization Chart

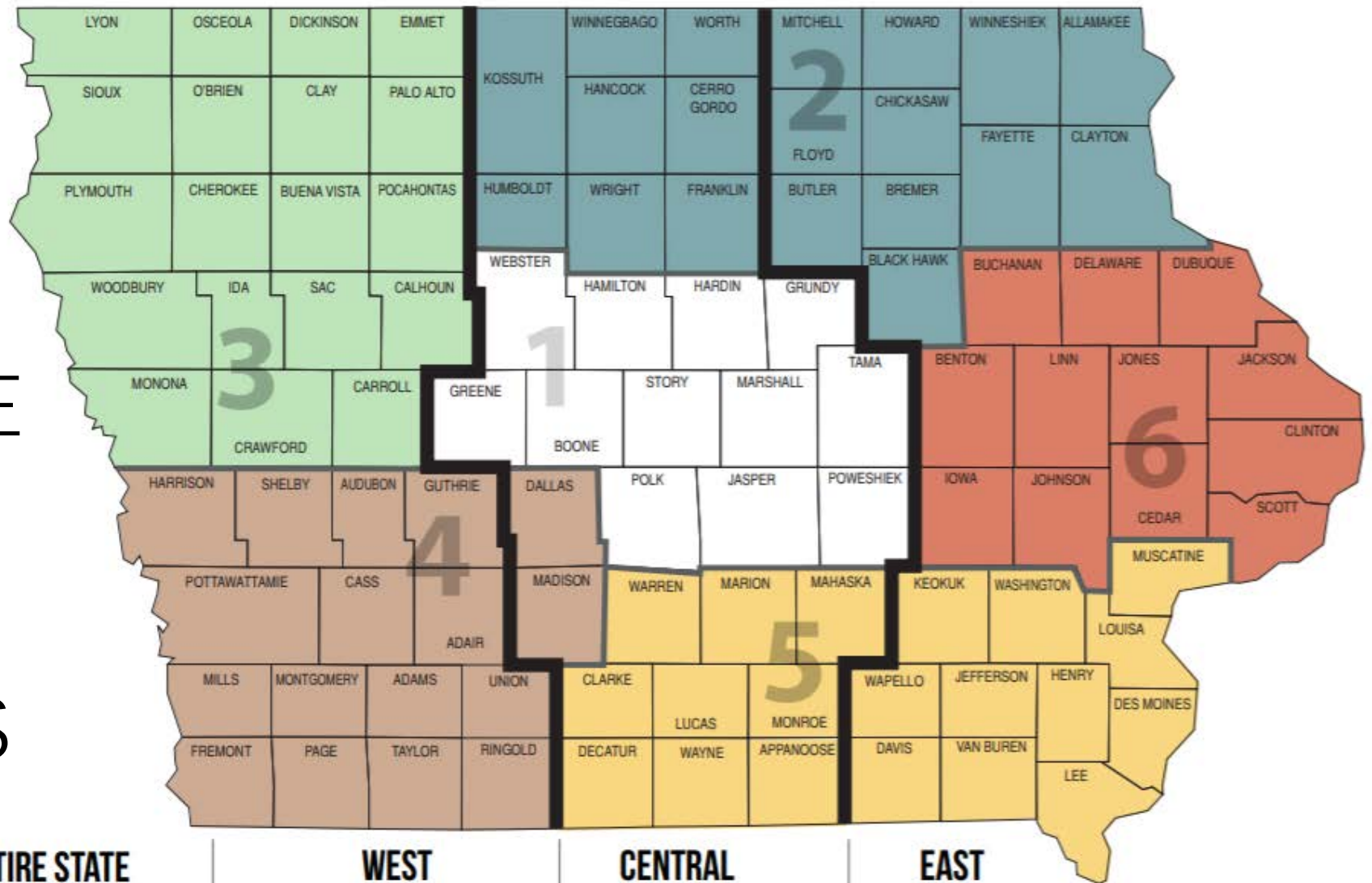
Mission Statement

Work with our transportation partners and provide guidance in the development and implementation of projects to ensure compliance with state and federal requirements. Together we will continue to improve the quality of transportation in Iowa.

LOCAL SYSTEMS BUREAU RECENTRALIZATION



HOW THE REGIONS ARE ORGANIZED VS. DISTRICT BOUNDARIES



ENTIRE STATE



**Local Systems Project
Development Engineer**
Christy VanBuskirk, P.E.
christy.vanbuskirk@iowadot.us
641-919-6125

WEST



**Local Systems Field Engineer
West Region**
Vince Ehlert, P.E.
vince.ehlert@iowadot.us
712-243-7638

CENTRAL



**Local Systems Field Engineer
Central Region**
Brian Catus, P.E.
brian.catus@iowadot.us
515-239-1555

EAST



**Local Systems Field Engineer
East Region**
Kent Ellis
kent.ellis@iowadot.us
319-286-4903

CATEGORY 1 – FEDERAL-AID COUNTY & CITY PROJECTS (ON ROADWAYS)

- Project Development & Plan Review
 - Concept Statement
 - NEPA Clearance
 - Use of approved design criteria
 - Use of Iowa DOT Standard Specifications
 - Preliminary, Check and Final Plans
- Contract Letting – always at Iowa DOT
 - Buy America
 - Davis Bacon Wage Rates
 - Possible DBE Requirements



CATEGORY 1 – FEDERAL-AID COUNTY & CITY PROJECTS (ON ROADWAYS)

- Construction Inspection & Contract Administration
 - Preconstruction Meeting – invite District Materials and Regional Field Tech/Engineer
 - Construction Inspection by LPA personnel
 - Materials Sampling and Testing by LPA personnel, per Materials I.M.s
 - Materials Quality Assurance by DME
 - Change orders require approval from Administering Bureau
 - Forms 830435 and 830436 get sent to Administering Bureau
 - Final Acceptance by Administering Bureau
 - All Federal-aid projects will be audited - a Systems Approach may be utilized in future

CATEGORY 2 – FEDERAL-AID NON-HIGHWAY PROJECTS

- Federal Rec Trails and some Transportation Alternatives Program projects
- Project Development and Plan Review
 - AASHTO Design Criteria
 - Iowa DOT Standard Specifications
 - Concept Statement
 - NEPA Clearance
 - Preliminary, Check and Final Plans
- Contract Letting – generally at Iowa DOT (see I.M. 5.120 for further info)
 - Buy America
 - Davis Bacon Wage Rates
 - Possible DBE Requirements

CATEGORY 2 – FEDERAL-AID NON-HIGHWAY PROJECTS

- Federal Rec Trails and some Transportation Alternatives Program projects
- Construction Inspection and Contract Administration
 - If locally let, or force account:
 - Discuss with Administering Bureau
 - If Iowa DOT letting:
 - Change orders require approval from Administering Bureau
 - Forms 830435 and 830436 get sent to Administering Bureau
 - Final Acceptance by Administering Bureau
 - Audit by Administering Bureau

CATEGORY 3 –STATE-AID

- Projects involving through lanes or turn lanes on the Primary Highway System, that will be owned & maintained by the DOT:
 - U-STEP/C-STEP
 - Some Revitalize Iowa's Sound Economy (RISE)
 - Some Traffic Safety Improvement Program (TSIP)
- Project Development
 - DOT District Approved Design within Primary ROW
 - Iowa DOT Specifications (SUDAS may be allowed)
 - Administering Bureau reviews Preliminary, Check and Final plans
- Contract Letting – local let but welcome to DOT letting
- Construction Inspection and Contract Administration
 - If Iowa DOT letting:
 - Change orders require approval from Administering Bureau
 - Form 640003 sent to Administering Bureau
 - Final Acceptance by Administering Bureau



CATEGORY 4 – FM, SWAP, STATE-AID

- Swap (Federal-aid Swap) – All Swap projects
- Farm-to-Market (FM)
- State County or City Bridge programs
- Revitalize Iowa's Sound Economy (RISE) – when not on Primary Highway
- Traffic Safety Improvement Program (TSIP) – when not on Primary Highway
- State Rec Trails
- ADA Curb Ramp Program
- Various state-aid, especially those with match funds as Swap or FM

CATEGORY 4 – FM, SWAP, STATE-AID

- Project Development and Plan Review
 - Swap & FM
 - Use of approved design criteria
 - Use of Iowa DOT Standard Specifications
 - Check and Final Plans
 - Other types:
 - Design Criteria & Specifications as LPA wishes
 - Iowa DOT Specs if let at Iowa DOT
- Contract Letting
 - Swap & FM – Iowa DOT letting
 - Other types – local or Iowa DOT letting

CATEGORY 4 – FM, SWAP, STATE-AID

- Construction Inspection and Contract Administration
 - Same as Category 1, except for ~~yellow highlight and strikeout below~~
 - Preconstruction Meeting – invite ~~District Materials and~~ Regional Field Tech/Engineer (always invite, they'll attend if able)
 - Construction Inspection by LPA personnel
 - Materials Sampling and Testing by LPA personnel, per Materials I.M.s
 - ~~Materials Quality Assurance by DME~~
 - Change orders – approval from Administering Bureau
 - Forms 830435 and 830436 get sent to Administering Bureau
 - Final Acceptance by Administering Bureau
 - These projects may get a “review” (not an audit) – 1 project per agency every 3 years (project picked by Administering Bureau)

QUESTIONS??

- Nicole Moore, P.E.
- Deputy Director, Local Systems Bureau
- Nicole.moore@iowadot.us
- 515.239.1506

