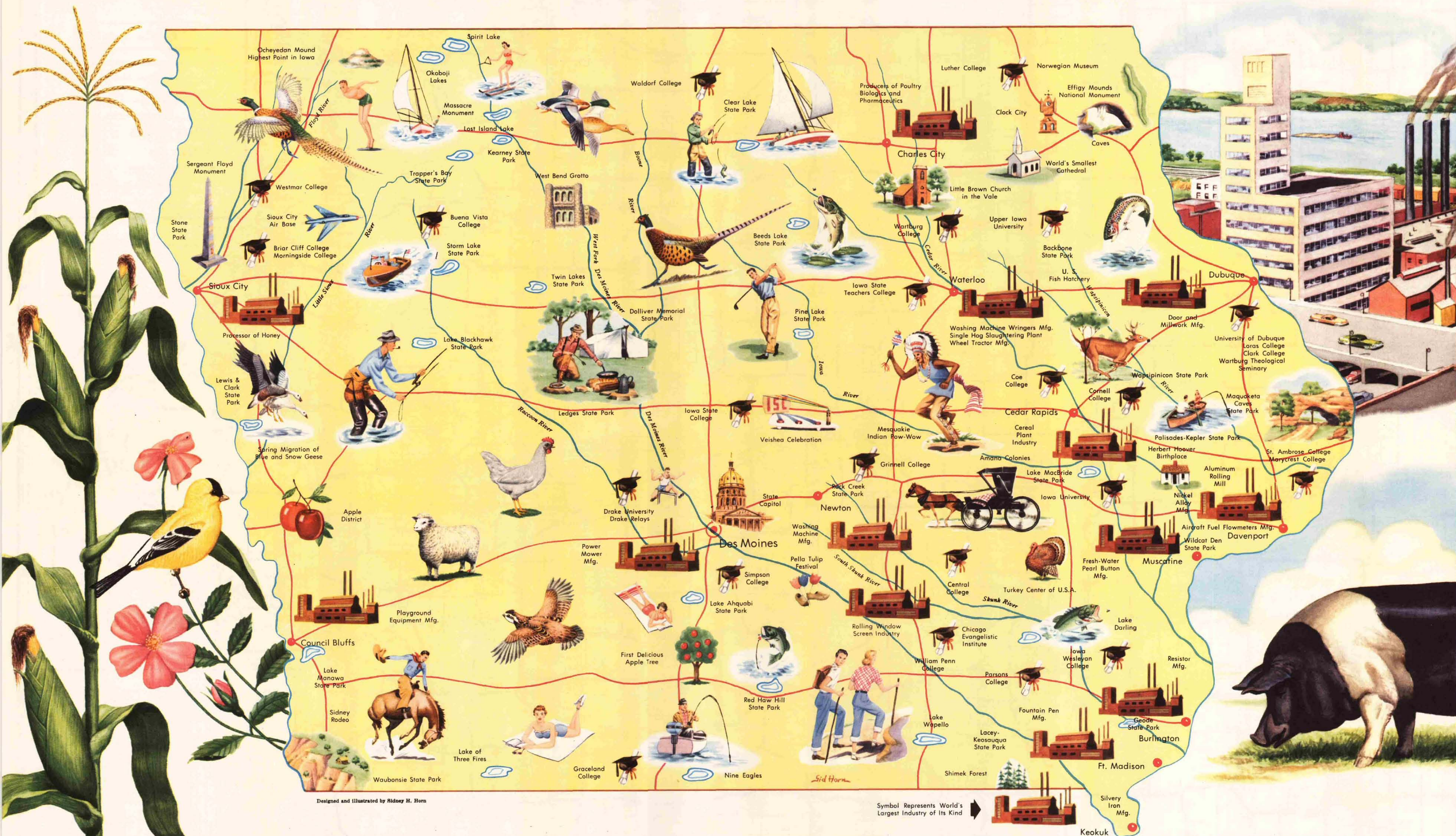


Iowa

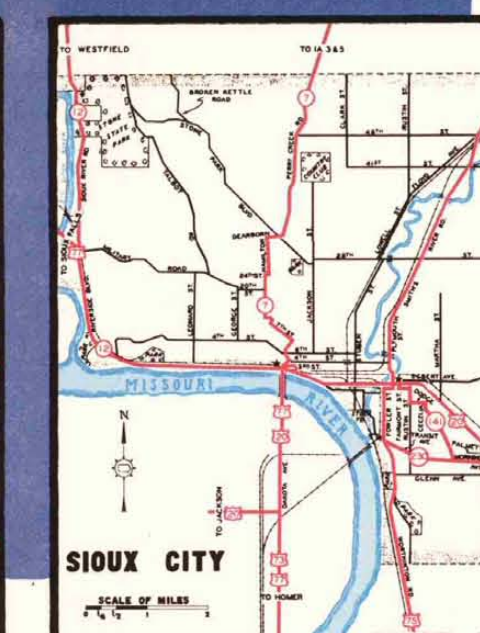
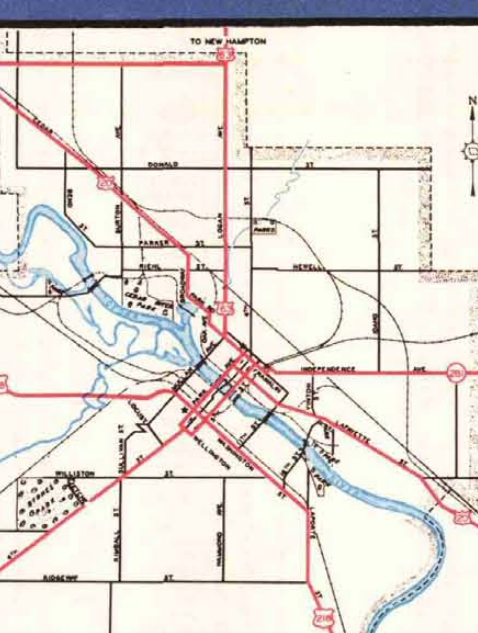
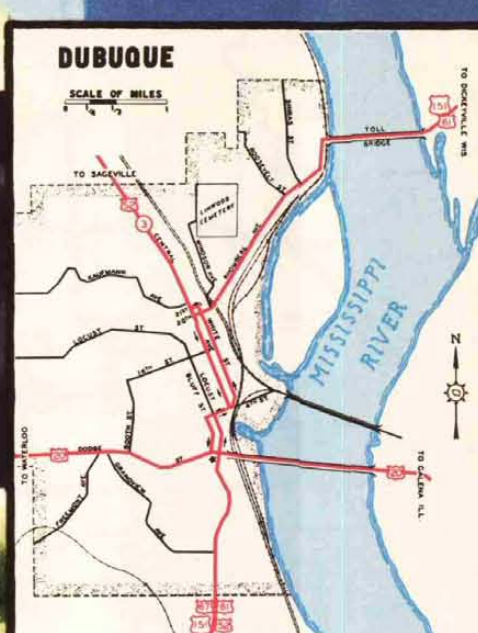
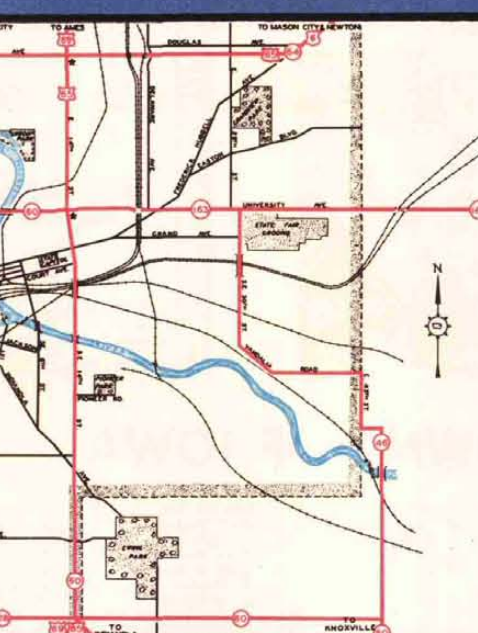
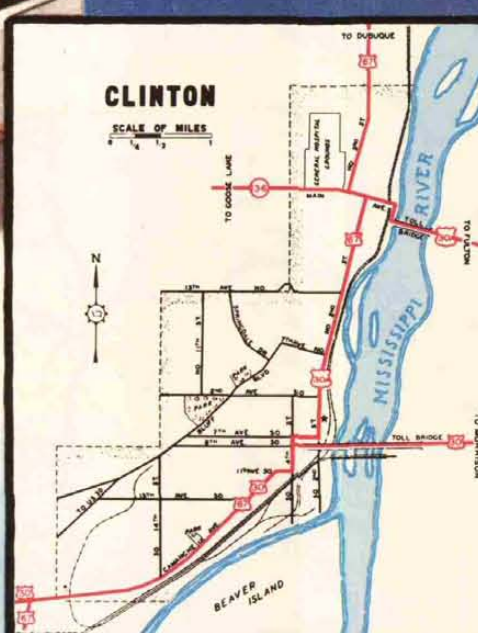
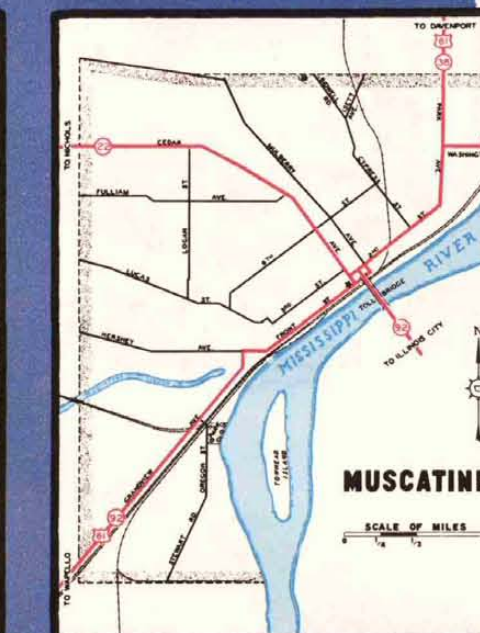
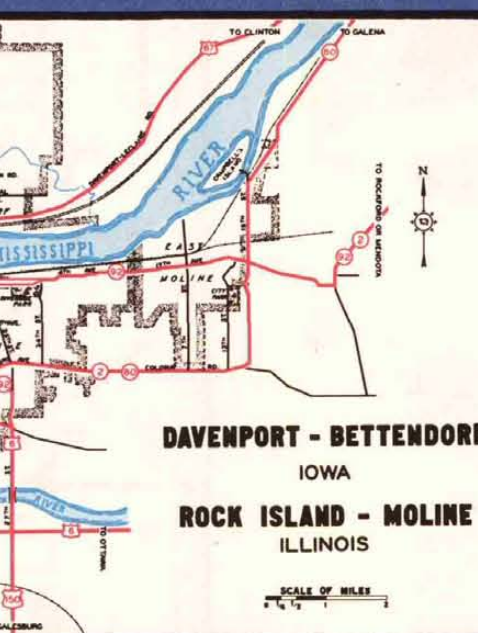
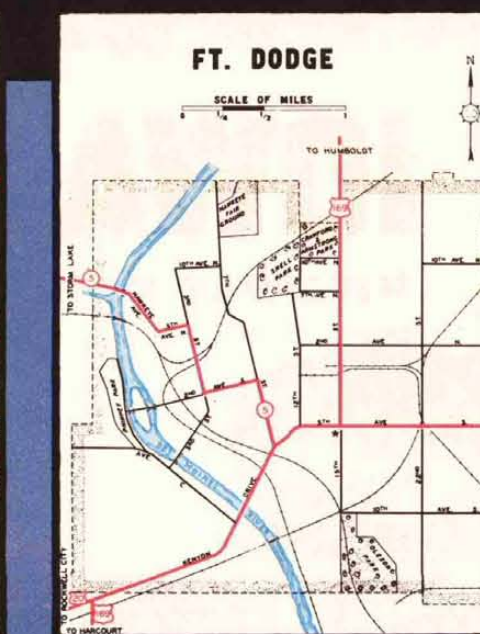
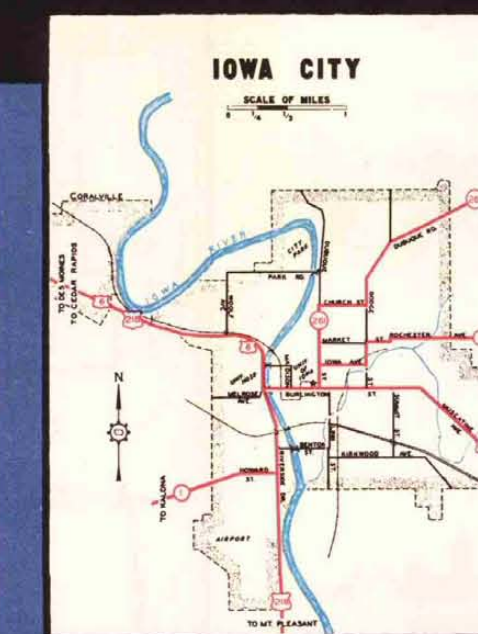
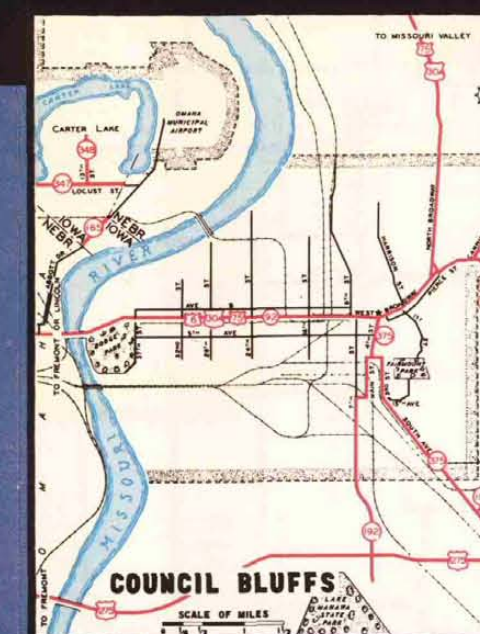
WHERE AGRICULTURE AND INDUSTRY THRIVE



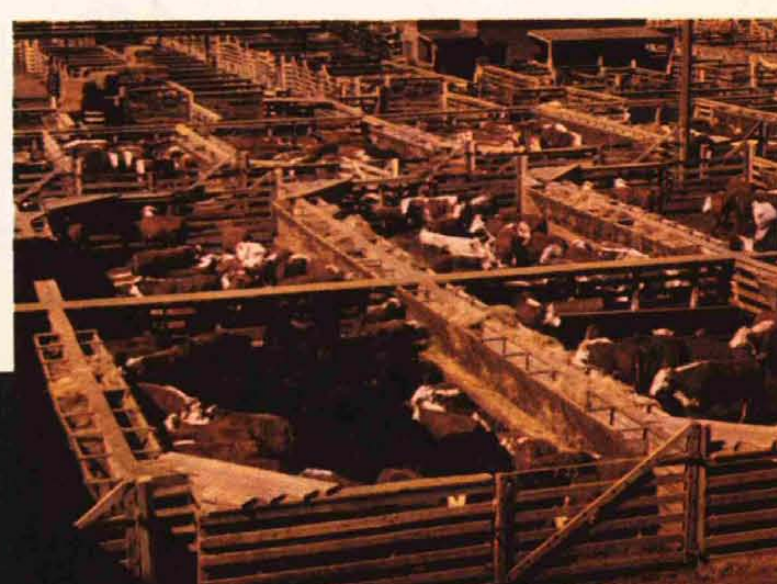
Designed and illustrated by Sidney H. Horn

Symbol Represents World's Largest Industry of Its Kind

Keokuk



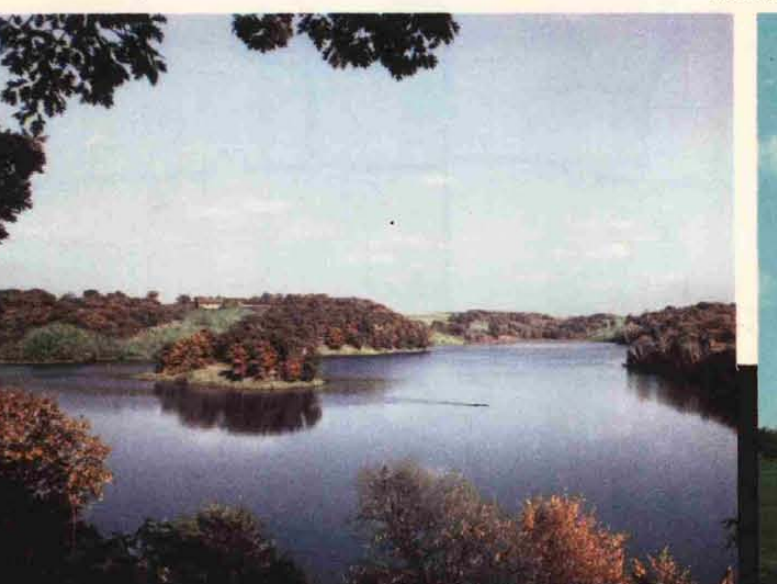
West Branch is the birthplace of Herbert Hoover—first president of the United States, born west of the Mississippi River.



General farming and livestock raising excepted, the processing and packing of meat is Iowa's largest industry.



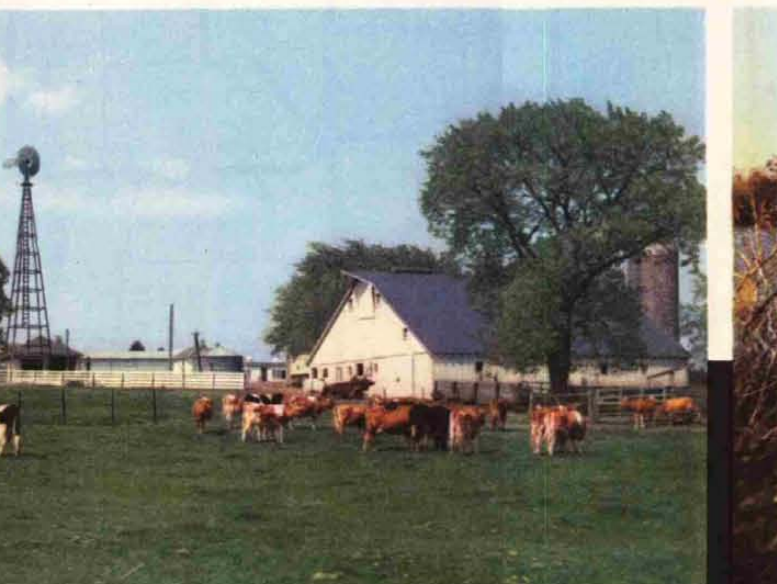
Iowa's soil produces more wealth each year than all the gold mines in the world.—Iowa Development Commission photo.



Iowa has seventy-two natural lakes, twenty-four artificial lakes, and ninety state parks and preserves.



Iowa's State Capitol Building, with its gold plated domes, is located at Des Moines.—Iowa Development Commission photo.



Iowa farmers enjoy one of the highest standards of rural living in the United States.—Iowa Development Commission photo.



Iowa's waterfowl and upland game hunting provide many hours of healthful outdoor recreation.—Iowa Development Commission photo.



Iowa's industrial activity is expanding, with factories turning out goods valued at \$2 billion to \$4.5 billion a year.