



**AUTOMATIC TRAFFIC RECORDER
MONTHLY REPORT
DECEMBER 2013**

PREPARED BY

OFFICE OF TRANSPORTATION DATA

IN COOPERATION WITH

UNITED STATES DEPARTMENT OF TRANSPORTATION

FEDERAL HIGHWAY ADMINISTRATION

TELEPHONE

515/239-1526

TABLE OF CONTENTS

Summary	3
Automatic Traffic Location Map	4
Monthly Traffic Variations 2013 vs 2012	5
Comparison of Estimated Vehicle Miles by System	6
Vehicle Miles of Travel	7
Individual Recorder Data	8 - 27
Monthly Interstate & Primary VMT	28
Monthly Interstate VMT	29
Monthly US & IA Route VMT	30
Monthly Total State VMT	31

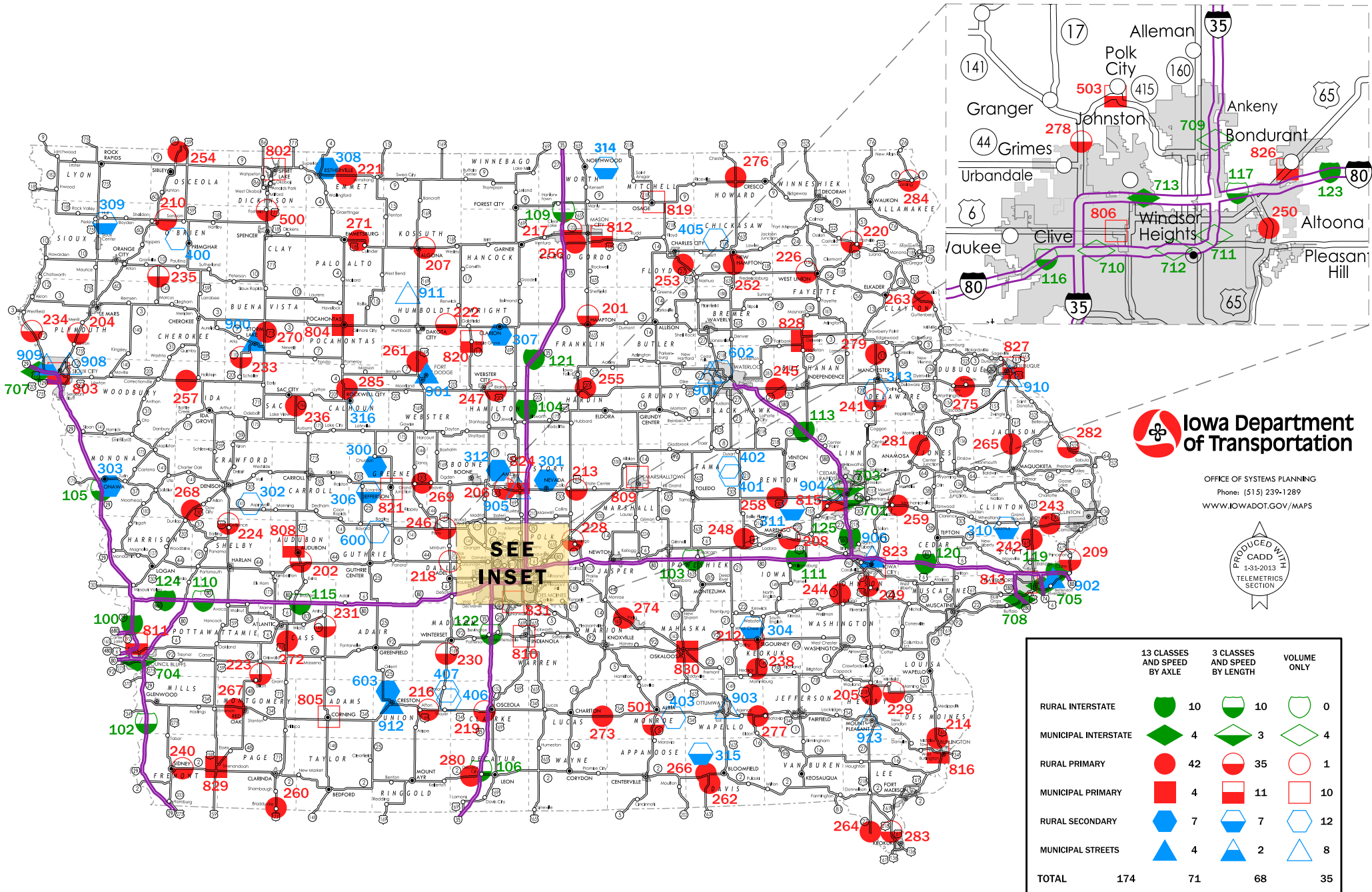
TRAFFIC VOLUME VARIATIONS ON THE IOWA ROAD SYSTEM

<u>DECEMBER</u> 2013	COMPARED TO	<u>DECEMBER</u> 2012	YEAR <u>TO DATE</u> 2013 / 2012
<u>RURAL</u>			
INTERSTATE		5.5%	0.5%
PRIMARY		1.9%	-0.1%
SECONDARY		-0.6%	-2.3%
SUBTOTAL		2.2%	-0.5%
<u>MUNICIPAL</u>			
INTERSTATE		1.9%	1.0%
PRIMARY		NO CHANGE	-1.6%
STREETS		-5.0%	-3.6%
SUBTOTAL		-2.4%	-2.1%
STATE TOTAL		0.2%	-1.2%

Data collected at the 174 continuous automatic traffic recorder locations shown on the following pages were utilized to compute the above percentages. The rural, municipal and state totals were weighted based on estimated vehicle miles of travel.

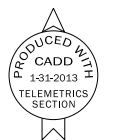
AUTOMATIC TRAFFIC RECORDER LOCATIONS

JANUARY 1, 2013



Iowa Department of Transportation

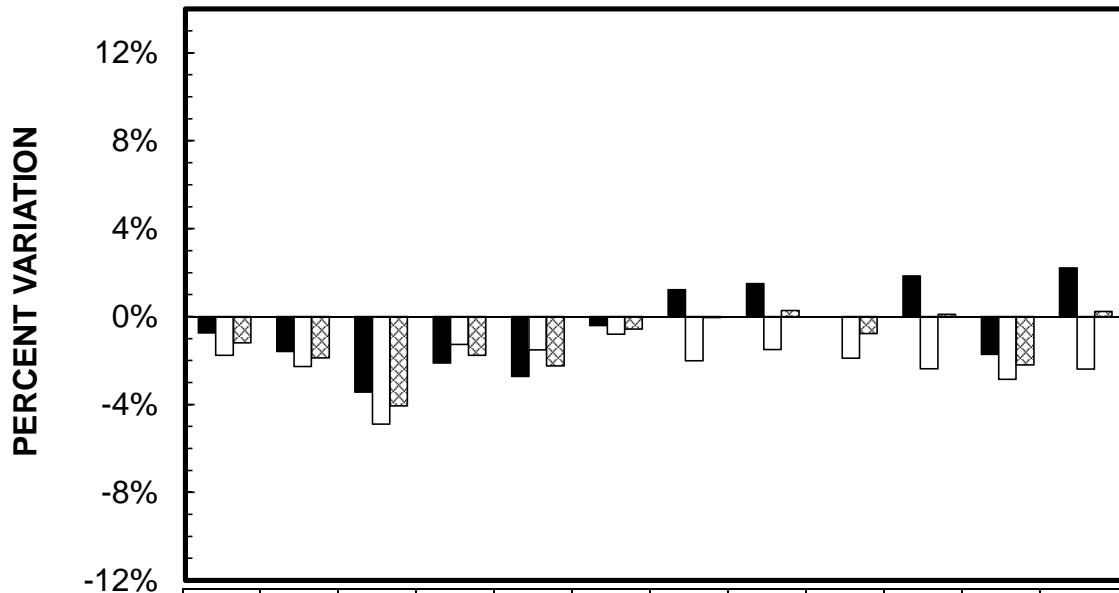
OFFICE OF SYSTEMS PLANNING
Phone: (515) 239-1289
WWW.IOWADOT.GOV/MAPS



	13 CLASSES AND SPEED BY AXLE	3 CLASSES AND SPEED BY LENGTH	VOLUME ONLY
RURAL INTERSTATE	10	10	0
MUNICIPAL INTERSTATE	4	3	4
RURAL PRIMARY	42	35	1
MUNICIPAL PRIMARY	4	11	10
RURAL SECONDARY	7	7	12
MUNICIPAL STREETS	4	2	8
TOTAL	174	71	68

MONTHLY TRAFFIC VARIATIONS

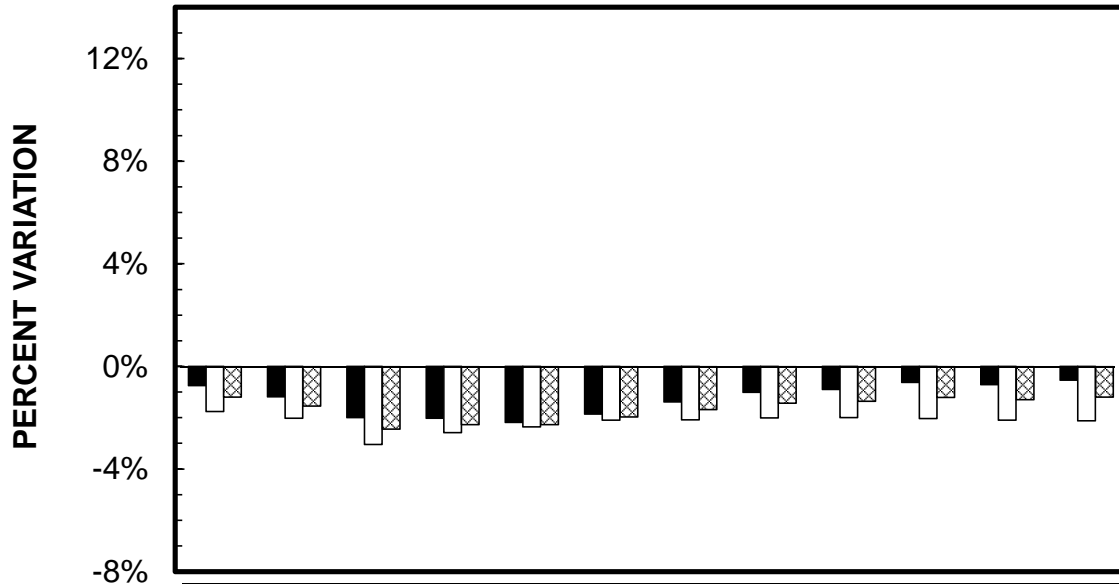
2013 vs 2012



	JAN	FEB	MAR	APR	MAY	JUN	JUL	AUG	SEP	OCT	NOV	DEC
■ RURAL	-0.75%	-1.59%	-3.44%	-2.11%	-2.73%	-0.41%	1.22%	1.50%	0.00%	1.84%	-1.73%	2.21%
□ MUNICIPAL	-1.76%	-2.27%	-4.89%	-1.27%	-1.52%	-0.80%	-2.01%	-1.49%	-1.89%	-2.37%	-2.86%	-2.39%
▨ STATE TOTAL	-1.19%	-1.88%	-4.05%	-1.76%	-2.24%	-0.57%	-0.04%	0.29%	-0.76%	0.11%	-2.19%	0.24%

CUMULATIVE MONTHLY TRAFFIC VARIATIONS

2013 vs 2012



	JAN	FEB	MAR	APR	MAY	JUN	JUL	AUG	SEP	OCT	NOV	DEC
■ RURAL	-0.75%	-1.18%	-2.00%	-2.03%	-2.19%	-1.86%	-1.39%	-1.01%	-0.90%	-0.63%	-0.72%	-0.53%
□ MUNICIPAL	-1.76%	-2.02%	-3.04%	-2.59%	-2.36%	-2.09%	-2.08%	-2.01%	-1.99%	-2.03%	-2.10%	-2.12%
▨ STATE TOTAL	-1.19%	-1.54%	-2.44%	-2.26%	-2.26%	-1.96%	-1.67%	-1.42%	-1.34%	-1.20%	-1.28%	-1.18%

COMPARISON OF ESTIMATED VMT BY SYSTEM (IN 1,000,000's)

	JAN %dif	FEB %dif	MAR %dif	APR %dif	MAY %dif	JUN %dif	JUL %dif	AUG %dif	SEP %dif	OCT %dif	NOV %dif	DEC %dif	CUMULATIVE	%dif
RURAL INTERSTATE														
2013	361	374	414	404	460	483	519	508	433	440	390	345	5131	
2012	359	382	412	408	465	481	507	496	431	433	403	327	5104	0.5%
	0.6%	-2.1%	0.5%	-1.0%	-1.1%	0.4%	2.4%	2.4%	0.5%	1.6%	-3.2%	5.5%		
RURAL PRIMARY														
2013	604	628	692	697	757	747	763	738	731	706	634	546	8243	
2012	607	641	704	703	770	750	752	724	723	695	643	536	8248	-0.1%
	-0.5%	-2.0%	-1.7%	-0.9%	-1.7%	-0.4%	1.5%	1.9%	1.1%	1.6%	-1.4%	1.9%		
RURAL SECONDARY														
2013	364	422	410	430	495	471	457	441	479	455	400	309	5133	
2012	373	424	454	453	525	477	459	442	489	444	403	311	5254	-2.3%
	-2.4%	-0.5%	-9.7%	-5.1%	-5.7%	-1.3%	-0.4%	-0.2%	-2.0%	2.5%	-0.7%	-0.6%		
RURAL SUBTOTAL														
2013	1329	1424	1516	1531	1712	1701	1739	1687	1643	1601	1424	1200	18507	
2012	1339	1447	1570	1564	1760	1708	1718	1662	1643	1572	1449	1174	18606	-0.5%
	-0.7%	-1.6%	-3.4%	-2.1%	-2.7%	-0.4%	1.2%	1.5%	0.0%	1.8%	-1.7%	2.2%		
MUNICIPAL INTERSTATE														
2013	205	217	227	220	229	236	221	239	228	222	206	160	2610	
2012	205	219	230	219	227	231	217	234	224	216	205	157	2584	1.0%
	0.0%	-0.9%	-1.3%	0.5%	0.9%	2.2%	1.8%	2.1%	1.8%	2.8%	0.5%	1.9%		
MUNICIPAL PRIMARY														
2013	272	271	295	293	331	327	331	317	294	287	267	243	3528	
2012	281	281	310	299	340	329	334	317	296	286	271	243	3587	-1.6%
	-3.2%	-3.6%	-4.8%	-2.0%	-2.6%	-0.6%	-0.9%	0.0%	-0.7%	0.3%	-1.5%	0.0%		
MUNICIPAL STREETS														
2013	527	546	568	577	606	550	523	565	569	563	513	455	6562	
2012	536	558	606	586	617	562	546	587	592	596	539	479	6804	-3.6%
	-1.7%	-2.2%	-6.3%	-1.5%	-1.8%	-2.1%	-4.2%	-3.7%	-3.9%	-5.5%	-4.8%	-5.0%		
MUNICIPAL SUBTOTAL														
2013	1004	1034	1090	1090	1166	1113	1075	1121	1091	1072	986	858	12700	
2012	1022	1058	1146	1104	1184	1122	1097	1138	1112	1098	1015	879	12975	-2.1%
	-1.8%	-2.3%	-4.9%	-1.3%	-1.5%	-0.8%	-2.0%	-1.5%	-1.9%	-2.4%	-2.9%	-2.4%		
STATE TOTAL														
2013	2333	2458	2606	2621	2878	2814	2814	2808	2734	2673	2410	2058	31207	
2012	2361	2505	2716	2668	2944	2830	2815	2800	2755	2670	2464	2053	31581	-1.2%
	-1.2%	-1.9%	-4.1%	-1.8%	-2.2%	-0.6%	0.0%	0.3%	-0.8%	0.1%	-2.2%	0.2%		

IOWA DEPARTMENT OF TRANSPORTATION
ESTIMATED 2013 VEHICLE MILES OF TRAVEL
(IN 1,000,000's)

MONTH	RURAL				MUNICIPAL				STATE TOTAL
	INTERSTATE	PRIMARY	SECONDARY	TOTAL	INTERSTATE	PRIMARY	SECONDARY	TOTAL	
JANUARY	361	604	364	1329	205	272	527	1004	2333
FEBRUARY	374	628	422	1424	217	271	546	1034	2458
MARCH	414	692	410	1516	227	295	568	1090	2606
APRIL	404	697	430	1531	220	293	577	1090	2621
MAY	460	757	495	1712	229	331	606	1166	2878
JUNE	483	747	471	1701	236	327	550	1113	2814
JULY	519	763	457	1739	221	331	523	1075	2814
AUGUST	508	738	441	1687	239	317	565	1121	2808
SEPTEMBER	433	731	479	1643	228	294	569	1091	2734
OCTOBER	440	706	455	1601	222	287	563	1072	2673
NOVEMBER	390	634	400	1424	206	267	513	986	2410
DECEMBER	345	546	309	1200	160	243	455	858	2058
SUBTOTAL	5131	8243	5133	18507	2610	3528	6562	12700	31207

**COMPARISON OF THE MONTHLY AVERAGE DAILY TRAFFIC (MADT) FOR 2013 AND 2012
AND ANNUAL AVERAGE DAILY TRAFFIC (AADT)**

RURAL INTERSTATE

LOCATION AND STATION NUMBER		JAN. MADT	FEB. MADT	MARCH MADT	APRIL MADT	MAY MADT	JUNE MADT	JULY MADT	AUG. MADT	SEPT. MADT	OCT. MADT	NOV. MADT	DEC. MADT	ANNUAL AADT
I 29 2.0 MI NORTH OF SOUTH JCT. I 680 HONEY CREEK 100-78	2013	16209	16464	18813	19071	20973	22152	22775	22285	20885	20814	19618	18820	19907
	2012	16243	16227	18625	19399	21800	22073	22363	21885	20474	20186	19667	17819	19730
	%	-0.21%	1.46%	1.01%	-1.69%	-3.79%	0.36%	1.84%	1.83%	2.01%	3.11%	-0.25%	5.62%	0.90%
I 29 4.0 MI SOUTH OF SOUTH JCT. US 34 PACIFIC JUNCTION 102-65	2013	9696	9618	11557	11918	13252	14246	14694	13940	12879	12962	12043	11232	12337
	2012	9275	9578	11333	11674	13275	13999	13841	13063	12152	12501	12369	11031	12008
	%	4.54%	0.42%	1.98%	2.09%	-0.17%	1.76%	6.16%	6.71%	5.98%	3.69%	-2.64%	1.82%	2.74%
I 80 7.4 MI EAST OF IA 146 GRINNELL 103-79	2013	19989	20399	24183	24579	27585	30249	31237	32128	27483	27019	25524	24443	26235
	2012	19684	20931	24016	24898	27811	29812	30410	31272	28022	26676	26749	22276	26046
	%	1.55%	-2.54%	0.70%	-1.28%	-0.81%	1.47%	2.72%	2.74%	-1.92%	1.29%	-4.58%	9.73%	0.73%
I 35 3.0 MI NORTH OF IA 175 JEWELL 104-40	2013	16680	17569	20781	21162	22577	24068	25473	25792	22457	22379	21421	20358	21726
	2012	16553	17965	20756	21581	22749	23959	24499	24923	21785	21839	22143	18498	21437
	%	0.77%	-2.20%	0.12%	-1.94%	-0.76%	0.45%	3.98%	3.49%	3.08%	2.47%	-3.26%	10.06%	1.35%
I 29 3.8 MI SOUTH OF IA 175 ONAWA 105-67	2013	9844	9979	11892	11640	13323	14503	15391	14843	13317	12929	12208	12135	12667
	2012	9560	9837	11435	12076	13690	14547	15140	14822	13162	12918	12711	11147	12587
	%	2.97%	1.44%	4.00%	-3.61%	-2.68%	-0.30%	1.66%	0.14%	1.18%	0.09%	-3.96%	8.86%	0.64%
I 35 1.5 MI NORTH OF IA 2 LEON 106-27	2013	10065	9731	12494	NO DATA	13418	14189	15037	14422	12907	13633	12410	NO DATA	NO AADT
	2012	10016	10300	12538	12527	13517	14255	14666	13859	12420	12993	13464	11839	12699
	%	0.49%	-5.52%	-0.35%		-0.73%	-0.46%	2.53%	4.06%	3.92%	4.93%	-7.83%		
I 35 3.0 MI NORTH OF CO RD B20 HANLONTOWN 109-17	2013	14742	14942	18229	18321	19725	22013	23447	22981	20023	19830	18218	17743	19184
	2012	14725	15487	18215	18861	20268	22370	23028	22562	19908	19471	19243	16914	19254
	%	0.12%	-3.52%	0.08%	-2.86%	-2.68%	-1.60%	1.82%	1.86%	0.58%	1.84%	-5.33%	4.90%	-0.36%
I 80 1.5 MI WEST OF CO RD M16 SHELBY 110-78	2013	17883	18044	21517	21554	24330	27267	28330	27794	24541	23417	21565	20601	23070
	2012	NO DATA	NO DATA	NO DATA	NO DATA	24636	27048	27191	27374	24483	23311	22629	19611	NO AADT
	%					-1.24%	0.81%	4.19%	1.53%	0.24%	0.45%	-4.70%	5.05%	
I 80 2.0 MI EAST OF IA 149 WILLIAMSBURG 111-48	2013	23972	24341	28626	29105	32602	34889	35863	36869	31953	31600	30180	27883	30642
	2012	23492	25138	NO DATA	NO DATA	NO DATA	35003	34687	36355	32441	31130	31468	26730	NO AADT
	%	2.04%	-3.17%				-0.33%	3.39%	1.41%	-1.50%	1.51%	-4.09%	4.31%	
I 380 3.8 MI NORTH OF IA 150 BRANDON 113-06	2013	13096	13610	15327	15666	16524	17392	17632	17687	16649	16751	16280	14627	15937
	2012	12982	14293	15400	15940	16510	17167	17661	17511	16673	16252	16274	14198	15905
	%	0.88%	-4.78%	-0.47%	-1.72%	0.08%	1.31%	-0.16%	1.01%	-0.14%	3.07%	0.04%	3.02%	0.20%
I 80 2.0 MI EAST OF US 71 ATLANTIC 115-15	2013	14749	14942	18144	18193	20988	23726	24911	24798	21311	20225	18443	17424	19821
	2012	14748	15039	18027	18833	21292	23640	24038	24268	21208	19932	19426	16428	19740
	%	0.01%	-0.64%	0.65%	-3.40%	-1.43%	0.36%	3.63%	2.18%	0.49%	1.47%	-5.06%	6.06%	0.41%

**COMPARISON OF THE MONTHLY AVERAGE DAILY TRAFFIC (MADT) FOR 2013 AND 2012
AND ANNUAL AVERAGE DAILY TRAFFIC (AADT)**

RURAL INTERSTATE

LOCATION AND STATION NUMBER		JAN. MADT	FEB. MADT	MARCH MADT	APRIL MADT	MAY MADT	JUNE MADT	JULY MADT	AUG. MADT	SEPT. MADT	OCT. MADT	NOV. MADT	DEC. MADT	ANNUAL AADT
I 80 0.8 MI WEST OF JORDAN CREEK PARKWAY WAUKEE 116-25	2013 2012 %	28927 29132 -0.70%	29340 29606 -0.90%	32911 33116 -0.62%	34038 34973 -2.67%	37209 37836 -1.66%	40158 40559 -0.99%	40965 40480 1.20%	42876 41183 4.11%	NO DATA 36994	NO DATA 36512	NO DATA 35183	NO DATA 30752	NO AADT 35527
I 80 1.8 MI EAST OF EAST JCT. I 35/80/235 ALTOONA 117-77	2013 2012 %	63635 63521 0.18%	65430 66016 -0.89%	71131 70555 0.82%	75812 73801 2.72%	78349 78095 0.33%	83972 82046 2.35%	82692 80471 2.76%	83600 81982 1.97%	75660 76494 -1.09%	76019 75729 0.38%	72234 73906 -2.26%	69823 65587 6.46%	74863 74017 1.14%
I 80 1.5 MI EAST OF MIDDLE ROAD LECLAIRE 119-82	2013 2012 %	23618 23393 0.96%	23688 24442 -3.08%	27701 27816 -0.41%	27557 28777 -4.24%	30788 31184 -1.27%	32402 34309 -5.56%	32928 34289 -3.97%	33729 35403 -4.73%	30422 32525 -6.47%	30076 31205 -3.62%	28025 30027 -6.67%	27067 26366 2.66%	29000 29978 -3.26%
I 80 2.5 MI EAST OF CO RD X40 TIPTON 120-16	2013 2012 %	25803 25353 1.77%	25733 27051 -4.87%	30652 30171 1.59%	30515 31263 -2.39%	33521 33831 -0.92%	36605 35949 1.82%	38176 36540 4.48%	39504 37044 6.64%	35370 32756 7.98%	33242 32811 1.31%	32156 32582 -1.31%	30398 28211 7.75%	32640 31963 2.12%
I 35 2.0 MI NORTH OF CO RD R75 DOWS 121-99	2013 2012 %	10712 10739 -0.25%	11030 11328 -2.63%	13581 13442 1.03%	13584 14001 -2.98%	14865 15265 -2.62%	16235 16752 -3.09%	17369 17137 1.35%	17142 16924 1.29%	14655 14571 0.58%	14654 14421 1.62%	13459 14297 -5.86%	13049 12360 5.57%	14195 14270 -0.53%
I 35 1.0 MI NORTH OF IA 92 CUMMING 122-92	2013 2012 %	17531 17920 -2.17%	16963 17763 -4.50%	20340 20494 -0.75%	20912 20948 -0.17%	21658 22406 -3.34%	22924 23154 -0.99%	23643 23130 2.22%	23257 22607 2.88%	21632 21101 2.52%	22480 21826 3.00%	20913 22028 -5.06%	20272 19664 3.09%	21044 21087 -0.20%
I 80 4.8 MI EAST OF EAST JCT. US 65 MITCHELLVILLE 123-77	2013 2012 %	28091 28125 -0.12%	28799 29586 -2.66%	32879 33020 -0.43%	33575 34144 -1.67%	36467 37621 -3.07%	40109 40070 0.10%	40489 39986 1.26%	41820 41264 1.35%	35975 37117 -3.08%	35829 36105 -0.76%	34073 35486 -3.98%	31850 30508 4.40%	34996 35253 -0.73%
I 680 6.4 MI WEST OF I 80 BEEBETOWN 124-78	2013 2012 %	4668 4464 4.57%	4601 4489 2.49%	5424 5330 1.76%	5583 5815 -3.99%	6285 6553 -4.09%	6814 6972 -2.27%	6871 6859 0.17%	7065 7023 0.60%	6382 6290 1.46%	6107 6221 -1.83%	5775 6156 -6.19%	5378 5188 3.66%	5913 5947 -0.57%
I 380 6.0 MI NORTH OF I 80 NORTH LIBERTY 125-52	2013 2012 %	42831 42426 0.95%	45400 46263 -1.87%	47742 47947 -0.43%	50191 49963 0.46%	51106 49640 2.95%	53205 50512 5.33%	51984 49236 5.58%	54018 51044 5.83%	52414 51097 2.58%	53119 50322 5.56%	50125 49510 1.24%	45880 44255 3.67%	49835 48518 2.71%
TOTAL RURAL INTERSTATE	2013 2012 %	394858 392351 0.64%	402579 411339 -2.13%	433781 432236 0.36%	432317 436947 -1.06%	502943 507979 -0.99%	577118 574196 0.51%	589907 575652 2.48%	596550 582368 2.44%	496915 494679 0.45%	493085 485849 1.49%	464670 480135 -3.22%	428983 406791 5.46%	

NOTE: Numbers in red denote estimated traffic due to road construction, inaccurate, or insufficient data. Monthly data for sites without comparable data are not include in TOTAL.

**COMPARISON OF THE MONTHLY AVERAGE DAILY TRAFFIC (MADT) FOR 2013 AND 2012
AND ANNUAL AVERAGE DAILY TRAFFIC (AADT)**

RURAL PRIMARY

LOCATION AND STATION NUMBER		JAN. MADT	FEB. MADT	MARCH MADT	APRIL MADT	MAY MADT	JUNE MADT	JULY MADT	AUG. MADT	SEPT. MADT	OCT. MADT	NOV. MADT	DEC. MADT	ANNUAL AADT
US 65 2.7 MI NORTH OF IA 3 HAMPTON 201-35	2013	2425	2512	2669	2894	2940	2990	3060	3103	3007	2975	2777	2629	2832
	2012	2400	2525	2746	2894	3075	3038	2986	2931	2909	2908	2782	2576	2814
	%	1.04%	-0.51%	-2.80%	0.00%	-4.39%	-1.58%	2.48%	5.87%	3.37%	2.30%	-0.18%	2.06%	0.64%
US 71 2.0 MI NORTH OF IA 44 HAMLIN 202-05	2013	2925	2965	3232	3361	3549	3782	3708	3549	3586	3595	NO DATA	NO DATA	NO AADT
	2012	3017	2973	3427	3568	3775	3841	3801	3779	3681	3583	3457	3164	3505
	%	-3.05%	-0.27%	-5.69%	-5.80%	-5.99%	-1.54%	-2.45%	-6.09%	-2.58%	0.33%			
US 75 3.1 MI NORTH OF CO RD C60 HINTON 204-75	2013	11449	11902	12827	12849	13821	14001	13925	13753	13163	13014	12525	12593	12985
	2012	11527	11706	12812	13010	13426	13944	14041	13806	13085	12845	12884	12353	12953
	%	-0.68%	1.67%	0.12%	-1.24%	2.94%	0.41%	-0.83%	-0.38%	0.60%	1.32%	-2.79%	1.94%	0.25%
US 218 1.7 MI SOUTH OF IA 78 SWEDESBURG 205-44	2013	9911	10201	11541	11724	12177	12635	12688	12923	12353	12383	11876	11160	11798
	2012	9894	10684	11720	11745	12482	12556	12555	12544	12046	11953	11983	11050	11768
	%	0.17%	-4.52%	-1.53%	-0.18%	-2.44%	0.63%	1.06%	3.02%	2.55%	3.60%	-0.89%	1.00%	0.25%
US 30 AT BOONE/STORY CO LINE NAPIER 206-85	2013	12293	12616	12946	14131	14048	14738	14691	15233	15584	14927	14005	13695	14076
	2012	12102	12578	13029	13893	14257	14456	14325	15079	15408	14599	14054	13384	13930
	%	1.58%	0.30%	-0.64%	1.71%	-1.47%	1.95%	2.55%	1.02%	1.14%	2.25%	-0.35%	2.32%	1.05%
US 18 2.2 MI EAST OF US 169 ALGONA 207-55	2013	2810	2918	3031	3261	3497	3730	4368	3896	3868	3594	3378	3172	3460
	2012	2883	2954	3181	3316	3576	3676	4297	3626	3821	3511	3382	3104	3444
	%	-2.53%	-1.22%	-4.72%	-1.66%	-2.21%	1.47%	1.65%	7.45%	1.23%	2.36%	-0.12%	2.19%	0.46%
US 6 3.0 MI EAST OF CO V66 MARENGO 208-48	2013	2636	2732	2944	3114	3324	NO DATA	NO DATA	3379	3204	3317	3083	2846	NO AADT
	2012	2663	2812	3105	3274	3442	3563	3574	3402	3339	3282	3106	2868	3202
	%	-1.01%	-2.84%	-5.19%	-4.89%	-3.43%			-0.68%	-4.04%	1.07%	-0.74%	-0.77%	
US 67 1.5 MI SOUTH OF CO RD F45 PRINCETON 209-82	2013	3622	3697	3920	4266	4364	4618	4658	4936	4481	4405	3915	3606	4207
	2012	3586	3923	4211	4432	4612	4862	4735	4610	4421	4302	4014	3726	4286
	%	1.00%	-5.76%	-6.91%	-3.75%	-5.38%	-5.02%	-1.63%	7.07%	1.36%	2.39%	-2.47%	-3.22%	-1.84%
US 18 4.2 MI EAST OF IA 60 SHELDON 210-71	2013	3645	3659	3811	3984	4383	4572	4722	4510	4707	4190	4062	3896	4178
	2012	3695	3738	4046	4278	4429	4709	4489	4461	4653	4185	3992	3805	4207
	%	-1.35%	-2.11%	-5.81%	-6.87%	-1.04%	-2.91%	5.19%	1.10%	1.16%	0.12%	1.75%	2.39%	-0.69%

**COMPARISON OF THE MONTHLY AVERAGE DAILY TRAFFIC (MADT) FOR 2013 AND 2012
AND ANNUAL AVERAGE DAILY TRAFFIC (AADT)**

RURAL PRIMARY

LOCATION AND STATION NUMBER		JAN. MADT	FEB. MADT	MARCH MADT	APRIL MADT	MAY MADT	JUNE MADT	JULY MADT	AUG. MADT	SEPT. MADT	OCT. MADT	NOV. MADT	DEC. MADT	ANNUAL AADT
IA 92 0.6 MI WEST OF CO RD V45 SIGOURNEY 212-54	2013	2057	2161	2311	2490	2701	2623	2614	2684	2568	2555	2389	2189	2445
	2012	2202	2297	2504	2554	2763	2670	2637	2721	NO DATA	NO DATA	2349	2192	NO AADT
	%	-6.58%	-5.92%	-7.71%	-2.51%	-2.24%	-1.76%	-0.87%	-1.36%			1.70%	-0.14%	
US 30 1.8 MI EAST OF US 65 COLO 213-85	2013	4778	5064	5418	5861	5995	6298	6216	6434	6598	6432	5968	5397	5872
	2012	4819	5121	5329	5767	6049	6158	5998	6141	6355	6141	5830	4924	5719
	%	-0.85%	-1.11%	1.67%	1.63%	-0.89%	2.27%	3.63%	4.77%	3.82%	4.74%	2.37%	9.61%	2.68%
US 61 3.8 MI NORTH OF US 34 BURLINGTON 214-29	2013	5726	5826	6230	6816	6950	7168	7104	6997	6955	6972	6568	6034	6612
	2012	5821	6175	6566	6803	6938	7121	6911	6738	6724	6696	6526	6088	6592
	%	-1.63%	-5.65%	-5.12%	0.19%	0.17%	0.66%	2.79%	3.84%	3.44%	4.12%	0.64%	-0.89%	0.30%
US 34/169 2.5 MI EAST OF WEST JCT US 169 AFTON 216-88	2013	3341	3272	3543	3759	3921	3988	3851	3902	3900	3857	3650	3433	3701
	2012	3424	3458	3661	4003	4204	4182	3916	3952	4095	3998	3864	3384	3845
	%	-2.42%	-5.38%	-3.22%	-6.10%	-6.73%	-4.64%	-1.66%	-1.27%	-4.76%	-3.53%	-5.54%	1.45%	-3.75%
IA 122 2.5 MI EAST OF I 35 CLEAR LAKE 217-17	2013	11772	12471	12522	13287	13803	14667	15053	14636	14031	13750	13097	13009	13508
	2012	11996	12903	13167	13819	14442	14777	15101	14677	13823	13549	13428	13200	13740
	%	-1.87%	-3.35%	-4.90%	-3.85%	-4.42%	-0.74%	-0.32%	-0.28%	1.50%	1.48%	-2.46%	-1.45%	-1.69%
IA 44 0.2 MI WEST OF US 169 ADEL 218-25	2013	2868	2888	3069	3410	3705	3877	4098	3892	3651	3615	3353	3073	3458
	2012	2909	2860	3185	3471	3901	4066	4276	4012	3776	3722	3513	3017	3559
	%	-1.41%	0.98%	-3.64%	-1.76%	-5.02%	-4.65%	-4.16%	-2.99%	-3.31%	-2.87%	-4.55%	1.86%	-2.84%
US 34 1.0 MI WEST OF I 35 OSCEOLA 219-20	2013	4188	4174	4487	4796	4817	4961	4907	4873	4941	4850	4681	4416	4674
	2012	4256	4305	4547	4957	5203	5300	5011	4944	4963	4965	4705	4347	4792
	%	-1.60%	-3.04%	-1.32%	-3.25%	-7.42%	-6.40%	-2.08%	-1.44%	-0.44%	-2.32%	-0.51%	1.59%	-2.46%
US 52 1.0 MI NORTH OF US 18 POSTVILLE 220-03	2013	1298	1332	1399	1537	1674	NO DATA	NO DATA	1604	1569	1647	1563	1334	NO AADT
	2012	1325	1409	1572	1669	1768	1786	1715	1695	1726	1705	1628	1371	1614
	%	-2.04%	-5.46%	-11.01%	-7.91%	-5.32%			-5.37%	-9.10%	-3.40%	-3.99%	-2.70%	
IA 9 2.5 MI WEST OF CO RD N52 ARMSTRONG 221-32	2013	1348	1415	1420	1475	NO DATA	1710	1812	1764	1793	1737	1554	1417	NO AADT
	2012	1365	1418	1555	1638	1766	1801	1852	1816	1865	1852	1521	1431	1657
	%	-1.25%	-0.21%	-8.68%	-9.95%		-5.05%	-2.16%	-2.86%	-3.86%	-6.21%	2.17%	-0.98%	
IA 3 0.1 MI WEST OF CO RD P66 HUMBOLDT 222-46	2013	1528	1580	1708	1749	1840	1854	1795	1788	1791	1825	1708	1621	1732
	2012	1585	1637	1789	NO DATA	NO DATA	1919	1886	1873	1931	1890	1745	1588	NO AADT
	%	-3.60%	-3.48%	-4.53%			-3.39%	-4.83%	-4.54%	-7.25%	-3.44%	-2.12%	2.08%	

**COMPARISON OF THE MONTHLY AVERAGE DAILY TRAFFIC (MADT) FOR 2013 AND 2012
AND ANNUAL AVERAGE DAILY TRAFFIC (AADT)**

RURAL PRIMARY

LOCATION AND STATION NUMBER		JAN. MADT	FEB. MADT	MARCH MADT	APRIL MADT	MAY MADT	JUNE MADT	JULY MADT	AUG. MADT	SEPT. MADT	OCT. MADT	NOV. MADT	DEC. MADT	ANNUAL AADT
IA 48 4.0 MI SOUTH OF IA 92 GRISWOLD 223-15	2013	1071	1087	1175	1279	1326	1323	1202	1243	1259	1304	1236	1114	1218
	2012	1105	1062	1200	1262	1355	1309	1184	1226	1284	1332	1276	1105	1225
	%	-3.08%	2.35%	-2.08%	1.35%	-2.14%	1.07%	1.52%	1.39%	-1.95%	-2.10%	-3.13%	0.81%	-0.57%
US 59 0.5 MI SOUTH OF CO RD F16 DEFIANCE 224-83	2013	2238	2303	2419	2574	2741	2838	2925	2814	2766	2711	2656	2493	2623
	2012	2384	2344	2585	2701	2892	2893	2803	2810	2737	2672	2646	2408	2656
	%	-6.12%	-1.75%	-6.42%	-4.70%	-5.22%	-1.90%	4.35%	0.14%	1.06%	1.46%	0.38%	3.53%	-1.24%
US 18 3.8 MI EAST OF CO RD W14 WEST UNION 226-33	2013	1915	1991	2181	2480	2786	2772	2855	2854	2796	2830	2441	2115	2501
	2012	NO DATA	NO DATA	NO DATA	NO DATA	2739	2864	2797	2724	2679	2574	2364	2050	NO AADT
	%					1.72%	-3.21%	2.07%	4.77%	4.37%	9.95%	3.26%	3.17%	
IA 117 2.5 MI SOUTH OF US 65 MINGO 228-50	2013	NO DATA	NO DATA	NO DATA	NO DATA	NO DATA	NO DATA	NO DATA	934	969	984	906	773	NO AADT
	2012	NO DATA	NO DATA	NO DATA	NO DATA	NO DATA	NO DATA	NO DATA	NO DATA	NO DATA	NO DATA	NO DATA	NO DATA	NO AADT
	%													
IA 78 1.2 MI WEST OF CO RD X23 WINFIELD 229-44	2013	679	669	708	809	813	818	751	770	845	859	775	685	765
	2012	649	688	696	NO DATA	816	797	751	755	863	804	740	686	NO AADT
	%	4.62%	-2.76%	1.72%		-0.37%	2.63%	0.00%	1.99%	-2.09%	6.84%	4.73%	-0.15%	
US 169 3.5 MI SOUTH OF SOUTH JCT IA 92 WINTERSET 230-61	2013	1385	1361	1486	1650	1804	1747	1696	1680	1775	1717	1718	1554	1631
	2012	1443	1418	1578	1719	1886	1799	1750	1758	1787	1794	1695	1494	1677
	%	-4.02%	-4.02%	-5.83%	-4.01%	-4.35%	-2.89%	-3.09%	-4.44%	-0.67%	-4.29%	1.36%	4.02%	-2.74%
IA 148 9.3 MI NORTH OF IA 92 ANITA 231-15	2013	NO DATA	NO DATA	NO DATA	NO DATA	NO DATA	NO DATA	NO DATA	839	861	834	771	733	NO AADT
	2012	712	661	742	797	NO DATA	NO DATA	NO DATA	NO DATA	NO DATA	NO DATA	NO DATA	NO DATA	NO AADT
	%													
IA 110 1.5 MI SOUTH OF CO RD C65 SCHALLER 233-11	2013	1167	1174	1224	1251	1345	1410	1421	1377	1343	1350	1257	1198	1293
	2012	1175	1205	1358	1361	1432	1442	1451	1374	1342	1329	1297	1208	1331
	%	-0.68%	-2.57%	-9.87%	-8.08%	-6.08%	-2.22%	-2.07%	0.22%	0.07%	1.58%	-3.08%	-0.83%	-2.85%
IA 12 2.5 MI NORTH OF CO RD K18 AKRON 234-75	2013	1082	1109	1195	1219	1251	1301	1226	1269	1270	1296	1300	1172	1224
	2012	1086	1104	1270	1241	1366	1460	1359	1364	1333	1369	1306	1189	1287
	%	-0.37%	0.45%	-5.91%	-1.77%	-8.42%	-10.89%	-9.79%	-6.96%	-4.73%	-5.33%	-0.46%	-1.43%	-4.90%
IA 143 3.4 MI SOUTH OF IA 10 MARCUS 235-71	2013	759	749	835	845	934	964	923	967	987	939	929	835	889
	2012	787	777	NO DATA	NO DATA	NO DATA	NO DATA	897	903	921	902	932	797	NO AADT
	%	-3.56%	-3.60%					2.90%	7.09%	7.17%	4.10%	-0.32%	4.77%	

**COMPARISON OF THE MONTHLY AVERAGE DAILY TRAFFIC (MADT) FOR 2013 AND 2012
AND ANNUAL AVERAGE DAILY TRAFFIC (AADT)**

RURAL PRIMARY

LOCATION AND STATION NUMBER		JAN. MADT	FEB. MADT	MARCH MADT	APRIL MADT	MAY MADT	JUNE MADT	JULY MADT	AUG. MADT	SEPT. MADT	OCT. MADT	NOV. MADT	DEC. MADT	ANNUAL AADT
IA 196 3.0 MI SOUTH OF US 20	2013	936	1010	1086	1181	1211	1234	1235	1244	1233	1229	1147	1051	1150
SAC CITY	2012	990	983	1095	1185	1246	1185	1184	1161	1259	1177	1128	1005	1133
236-81	%	-5.45%	2.75%	-0.82%	-0.34%	-2.81%	4.14%	4.31%	7.15%	-2.07%	4.42%	1.68%	4.58%	1.50%
IA 149 2.1 MI NORTH OF IA 78	2013	1049	1068	1149	1261	1318	1304	1243	1258	1234	1231	1160	1072	1196
MARTINSBURG	2012	1039	1088	1214	1293	1317	1244	1186	1169	NO DATA	NO DATA	1210	1110	NO AADT
238-54	%	0.96%	-1.84%	-5.35%	-2.47%	0.08%	4.82%	4.81%	7.61%			-4.13%	-3.42%	
IA 2 3.0 MI EAST OF US 275	2013	1634	1648	1801	1847	1939	2008	1958	1986	1961	1975	1850	1743	1862
SIDNEY	2012	1769	1747	1872	1920	1970	2013	1872	1926	1886	1902	1872	1717	1872
240-36	%	-7.63%	-5.67%	-3.79%	-3.80%	-1.57%	-0.25%	4.59%	3.12%	3.98%	3.84%	-1.18%	1.51%	-0.53%
IA 13 6.3 MI SOUTH OF US 20	2013	3370	3513	3775	4109	4508	4676	4691	4621	4489	4664	4202	3838	4205
RYAN	2012	3406	3643	3886	4116	4483	4728	4461	4426	4542	4463	4191	3868	4184
241-28	%	-1.06%	-3.57%	-2.86%	-0.17%	0.56%	-1.10%	5.16%	4.41%	-1.17%	4.50%	0.26%	-0.78%	0.50%
US 61 3.8 MI NORTH OF CO RD F41	2013	14452	14941	15842	17025	17037	18215	17850	18052	17332	17334	16370	15362	16651
ELDRIDGE	2012	14546	15510	15985	17041	17864	18269	17608	17374	17040	16936	16580	15389	16678
242-82	%	-0.65%	-3.67%	-0.89%	-0.09%	-4.63%	-0.30%	1.37%	3.90%	1.71%	2.35%	-1.27%	-0.18%	-0.16%
US 30 0.3 MI EAST OF CO RD Z24	2013	NO DATA	NO DATA	NO DATA	NO DATA	NO DATA	NO DATA	NO DATA	10382	9973	9987	9765	9040	NO AADT
DEWITT	2012	8738	9205	9605	9883	9991	NO DATA	NO DATA	NO DATA	NO DATA	NO DATA	NO DATA	NO DATA	NO AADT
243-23	%													
IA 1 0.8 MI SOUTH OF CO RD F67	2013	4786	4827	5207	5668	5856	5853	5665	5726	5808	5676	5532	5066	5473
KALONA	2012	4891	5125	5536	5697	5939	5972	5673	5657	5707	5640	5516	5071	5535
244-52	%	-2.15%	-5.81%	-5.94%	-0.51%	-1.40%	-1.99%	-0.14%	1.22%	1.77%	0.64%	0.29%	-0.10%	-1.12%
US 20 1.5 MI EAST OF CO RD V62	2013	8797	9200	9979	10039	10115	10470	10778	10705	10102	10070	9633	9678	9964
JESUP	2012	9182	9936	10450	10810	10635	NO DATA	NO DATA	NO DATA	11119	11028	10718	9565	NO AADT
245-07	%	-4.19%	-7.41%	-4.51%	-7.13%	-4.89%				-9.15%	-8.69%	-10.12%	1.18%	
IA 141 1.0 MI EAST OF WILLIS AVE	2013	8211	8600	8935	9508	9708	9713	9526	9787	9434	9485	9201	8759	9239
PERRY	2012	8382	8737	9010	9472	9951	10374	10123	10423	10011	9968	9805	8718	9581
246-25	%	-2.04%	-1.57%	-0.83%	0.38%	-2.44%	-6.37%	-5.90%	-6.10%	-5.76%	-4.85%	-6.16%	0.47%	-3.57%
US 20 3.0 MI EAST OF EAST JCT IA 17	2013	6802	7207	8029	8243	8402	8495	8815	9067	8540	8434	8591	7904	8211
WEBSTER CITY	2012	6594	7092	7801	8204	8591	NO DATA	NO DATA	NO DATA	NO DATA	NO DATA	NO DATA	7402	NO AADT
247-40	%	3.15%	1.62%	2.92%	0.48%	-2.20%							6.78%	

**COMPARISON OF THE MONTHLY AVERAGE DAILY TRAFFIC (MADT) FOR 2013 AND 2012
AND ANNUAL AVERAGE DAILY TRAFFIC (AADT)**

RURAL PRIMARY

LOCATION AND STATION NUMBER		JAN. MADT	FEB. MADT	MARCH MADT	APRIL MADT	MAY MADT	JUNE MADT	JULY MADT	AUG. MADT	SEPT. MADT	OCT. MADT	NOV. MADT	DEC. MADT	ANNUAL AADT
IA 21 2.8 MI NORTH OF US 6	2013	960	965	1036	1149	1309	1301	1228	1272	1209	1213	1126	969	1145
BELLE PLAINE	2012	975	1017	1113	1217	1304	1268	1244	1230	1215	1207	1151	1013	1163
248-48	%	-1.54%	-5.11%	-6.92%	-5.59%	0.38%	2.60%	-1.29%	3.41%	-0.49%	0.50%	-2.17%	-4.34%	-1.55%
US 218 3.5 MI SOUTH OF IA 921	2013	17215	17948	19459	20033	20401	21111	20880	21002	20360	20407	19878	19031	19810
HILLS	2012	17379	18168	19156	19806	20279	20712	20492	20545	19985	19890	19886	18831	19594
249-52	%	-0.94%	-1.21%	1.58%	1.15%	0.60%	1.93%	1.89%	2.22%	1.88%	2.60%	-0.04%	1.06%	1.10%
US 65 1.5 MI NORTH OF IA 163	2013	21563	22227	23295	25383	26080	27190	26605	29613	25759	25657	24379	22652	25034
PLEASANT HILL	2012	21892	22562	23794	25187	26314	27414	26319	29145	25879	25447	24763	22279	25083
250-77	%	-1.50%	-1.48%	-2.10%	0.78%	-0.89%	-0.82%	1.09%	1.61%	-0.46%	0.83%	-1.55%	1.67%	-0.20%
US 18/63 0.5 MI SOUTH OF CO RD B54	2013	4412	4532	5017	5163	5362	5583	5605	5678	5551	5618	5281	4905	5225
NEW HAMPTON	2012	4323	4551	4968	5168	5486	5674	5559	5617	5440	5372	5215	4726	5175
252-19	%	2.06%	-0.42%	0.99%	-0.10%	-2.26%	-1.60%	0.83%	1.09%	2.04%	4.58%	1.27%	3.79%	0.97%
US 218 3.5 MI SOUTH OF CO RD T64	2013	7283	7509	8505	8783	9534	10155	10680	10333	9506	9198	8784	8262	9044
CHARLES CITY	2012	7259	7874	8811	9165	10022	10621	10639	10194	9542	9221	9124	8150	9218
253-34	%	0.33%	-4.64%	-3.47%	-4.17%	-4.87%	-4.39%	0.39%	1.36%	-0.38%	-0.25%	-3.73%	1.37%	-1.89%
IA 60 4.1 MI NORTH OF IA 9	2013	2611	2722	3161	3075	3439	3575	3646	3658	3432	3459	3233	3203	3268
SIBLEY	2012	2556	2565	NO DATA	NO DATA	NO DATA	NO DATA	NO DATA	NO DATA	NO DATA	NO DATA	NO DATA	NO DATA	NO AADT
254-72	%	2.15%	6.12%											
US 20 1.0 MI EAST OF US 65	2013	6787	7198	8220	8465	9273	9280	9822	9833	9276	9186	9258	8166	8730
IOWA FALLS	2012	6917	7472	8233	8554	9095	9029	9628	9501	9000	9050	9224	7593	8608
255-42	%	-1.88%	-3.67%	-0.16%	-1.04%	1.96%	2.78%	2.01%	3.49%	3.07%	1.50%	0.37%	7.55%	1.42%
US 18 3.3 MI EAST OF I 35	2013	6219	6445	7056	7631	8747	9182	9771	9336	8359	7963	7761	7231	7975
MASON CITY	2012	6237	6705	7452	7984	8338	9179	9507	9167	8418	8038	8314	7012	8029
256-17	%	-0.29%	-3.88%	-5.31%	-4.42%	4.91%	0.03%	2.78%	1.84%	-0.70%	-0.93%	-6.65%	3.12%	-0.67%
US 20 3.6 MI WEST OF WEST JCT US 59	2013	2729	2806	NO DATA	3166	3523	3641	3736	3759	3589	3520	3448	3289	NO AADT
HOLSTEIN	2012	2594	2652	2919	2989	3203	3312	3188	3219	3037	3056	3122	2969	3022
257-47	%	5.20%	5.81%		5.92%	9.99%	9.93%	17.19%	16.78%	18.18%	15.18%	10.44%	10.78%	
US 30 0.6 MI EAST OF CO RD V66	2013	5501	5691	6260	6636	6948	7056	7011	7429	7305	7007	6672	6042	6630
BLAIRSTOWN	2012	5342	5884	6219	6701	6994	7175	7033	7241	7026	6614	6595	5808	6553
258-06	%	2.98%	-3.28%	0.66%	-0.97%	-0.66%	-1.66%	-0.31%	2.60%	3.97%	5.94%	1.17%	4.03%	1.18%

**COMPARISON OF THE MONTHLY AVERAGE DAILY TRAFFIC (MADT) FOR 2013 AND 2012
AND ANNUAL AVERAGE DAILY TRAFFIC (AADT)**

RURAL PRIMARY

LOCATION AND STATION NUMBER		JAN. MADT	FEB. MADT	MARCH MADT	APRIL MADT	MAY MADT	JUNE MADT	JULY MADT	AUG. MADT	SEPT. MADT	OCT. MADT	NOV. MADT	DEC. MADT	ANNUAL AADT
US 30 3.5 MI EAST OF IA 1	2013	4825	5009	5349	5714	5864	6021	5899	5944	5947	5892	5537	5007	5584
LISBON	2012	4897	5201	5595	5949	6241	6430	6227	6109	6066	6018	5826	5180	5812
259-16	%	-1.47%	-3.69%	-4.40%	-3.95%	-6.04%	-6.36%	-5.27%	-2.70%	-1.96%	-2.09%	-4.96%	-3.34%	-3.92%
US 71 0.6 MI SOUTH OF CO RD J64	2013	2021	2020	2263	2347	2455	2543	2524	2489	2548	2423	2331	2186	2346
BRADDYVILLE	2012	2114	2124	2366	2534	2533	2363	2496	2421	2501	2560	2593	2238	2404
260-73	%	-4.40%	-4.90%	-4.35%	-7.38%	-3.08%	7.62%	1.12%	2.81%	1.88%	-5.35%	-10.10%	-2.32%	-2.41%
US 169 2.3 MI NORTH OF CO RD D14	2013	4798	4953	5151	5538	5720	5845	6039	6099	6117	5873	5598	5512	5604
FORT DODGE	2012	NO DATA	NO DATA	NO DATA	NO DATA	NO DATA	5830	5886	5871	5750	5737	5553	5259	NO AADT
261-94	%						0.26%	2.60%	3.88%	6.38%	2.37%	0.81%	4.81%	
US 63 1.6 MI SOUTH OF IA 2	2013	1835	1873	2112	2204	2364	2467	2619	2447	2309	2259	2133	1988	2218
BLOOMFIELD	2012	1843	1931	2141	2199	2410	2465	2523	2400	2282	2224	2271	2011	2225
262-26	%	-0.43%	-3.00%	-1.35%	0.23%	-1.91%	0.08%	3.80%	1.96%	1.18%	1.57%	-6.08%	-1.14%	-0.31%
US 52 0.3 MI EAST OF CO RD X47	2013	1903	2037	2131	2360	2745	2727	2689	2677	2554	2665	2255	2054	2400
GARNAVILLO	2012	1917	1998	2175	2285	2572	2700	2633	2622	2647	2600	2385	2045	2382
263-22	%	-0.73%	1.95%	-2.02%	3.28%	6.73%	1.00%	2.13%	2.10%	-3.51%	2.50%	-5.45%	0.44%	0.76%
IA 27 3.0 MI SOUTH OF CO RD W62	2013	4824	4796	5818	5661	6094	6816	6913	6636	6000	6108	5506	5522	5891
ARGYLE	2012	4728	4883	6006	5742	6236	6546	6620	6276	5751	5793	5743	5244	5797
264-56	%	2.03%	-1.78%	-3.13%	-1.41%	-2.28%	4.12%	4.43%	5.74%	4.33%	5.44%	-4.13%	5.30%	1.62%
US 61 1.0 MI NORTH OF CO RD E17	2013	6189	6397	6926	7290	7683	8000	8476	8327	NO DATA	NO DATA	NO DATA	NO DATA	NO AADT
MAQUOKETA	2012	6275	6725	7192	7572	7922	8357	8467	8194	7890	7835	7390	6624	7537
265-49	%	-1.37%	-4.88%	-3.70%	-3.72%	-3.02%	-4.27%	0.11%	1.62%					
IA 2 0.8 MI WEST OF US 63	2013	1332	1321	1473	1580	1687	1711	1682	1666	1694	1654	1518	1392	1559
WEST GROVE	2012	1355	1372	1506	1612	1653	1664	1651	1629	1677	1605	1541	1421	1557
266-26	%	-1.70%	-3.72%	-2.19%	-1.99%	2.06%	2.82%	1.88%	2.27%	1.01%	3.05%	-1.49%	-2.04%	0.13%
US 34 3.0 MI WEST OF US 59	2013	3870	3898	4137	4224	4462	4484	4384	4364	4349	4300	4152	4082	4225
EMERSON	2012	4046	3959	4299	4482	4818	4778	4442	4596	4630	4548	4375	4074	4421
267-65	%	-4.35%	-1.54%	-3.77%	-5.76%	-7.39%	-6.15%	-1.31%	-5.05%	-6.07%	-5.45%	-5.10%	0.20%	-4.43%
US 30 4 MI WEST OF CO RD M14	2013	2626	2623	2922	3024	3260	3231	3240	3186	3208	3069	3066	2883	3028
DOW CITY	2012	2611	2516	2885	2989	3246	3196	3204	3239	3202	3043	3022	2788	2995
268-24	%	0.57%	4.25%	1.28%	1.17%	0.43%	1.10%	1.12%	-1.64%	0.19%	0.85%	1.46%	3.41%	1.10%

**COMPARISON OF THE MONTHLY AVERAGE DAILY TRAFFIC (MADT) FOR 2013 AND 2012
AND ANNUAL AVERAGE DAILY TRAFFIC (AADT)**

RURAL PRIMARY

LOCATION AND STATION NUMBER		JAN. MADT	FEB. MADT	MARCH MADT	APRIL MADT	MAY MADT	JUNE MADT	JULY MADT	AUG. MADT	SEPT. MADT	OCT. MADT	NOV. MADT	DEC. MADT	ANNUAL AADT
US 30 3.6 MI EAST OF IA 144	2013	3536	3649	3946	4111	4421	4537	4424	4604	4597	4450	4181	3900	4196
GRAND JUNCTION	2012	3712	3741	4117	4390	4763	4878	4697	4837	4814	4456	4466	3741	4384
269-37	%	-4.74%	-2.46%	-4.15%	-6.36%	-7.18%	-6.99%	-5.81%	-4.82%	-4.51%	-0.13%	-6.38%	4.25%	-4.29%
US 71 3.6 MI SOUTH OF IA 3	2013	2357	2408	2657	2676	2920	3099	3237	3215	3278	2809	2717	2629	2833
STORM LAKE	2012	2199	2255	2413	2570	3052	2979	3108	3060	3064	2546	2471	2498	2685
270-11	%	7.19%	6.78%	10.11%	4.12%	-4.33%	4.03%	4.15%	5.07%	6.98%	10.33%	9.96%	5.24%	5.51%
US 18 4.3 MI EAST OF IA 4	2013	2660	2761	2941	3167	3479	3731	3952	3677	3846	3316	3060	2805	3283
EMMETSBURG	2012	2673	2800	3164	3220	3593	3867	3969	3698	3766	3339	3194	2875	3347
271-74	%	-0.49%	-1.39%	-7.05%	-1.65%	-3.17%	-3.52%	-0.43%	-0.57%	2.12%	-0.69%	-4.20%	-2.43%	-1.91%
US 71 5.2 MI SOUTH OF WEST JCT US 6	2013	1988	1973	2158	2278	2401	2468	2394	2340	2356	2305	2258	2121	2253
ATLANTIC	2012	2152	2140	2395	2381	2505	2493	2344	2276	2326	2392	2382	2168	2330
272-15	%	-7.62%	-7.80%	-9.90%	-4.33%	-4.15%	-1.00%	2.13%	2.81%	1.29%	-3.64%	-5.21%	-2.17%	-3.30%
US 34 3.6 MI EAST OF CO RD S56	2013	1755	1725	1889	2013	2157	2213	2339	2224	2191	2144	2013	1895	2047
RUSSELL	2012	1817	1799	2022	2103	2304	2383	2337	2174	2275	2187	2118	1867	2116
273-59	%	-3.41%	-4.11%	-6.58%	-4.28%	-6.38%	-7.13%	0.09%	2.30%	-3.69%	-1.97%	-4.96%	1.50%	-3.26%
IA 163 2.6 MI WEST OF CO RD G28	2013	9592	9879	10737	11503	11546	11934	12021	12800	11468	11366	11141	10590	11215
PELLA	2012	9375	9939	10414	11212	11975	11903	11517	12667	11256	11141	11071	10201	11056
274-63	%	2.31%	-0.60%	3.10%	2.60%	-3.58%	0.26%	4.38%	1.05%	1.88%	2.02%	0.63%	3.81%	1.44%
US 20 0.5 MI WEST OF CENTER AVE	2013	10831	11279	11863	12626	13214	13231	13314	13672	13848	13468	12699	11774	12652
EPWORTH	2012	10711	11649	12254	12754	13248	13450	13275	13595	13364	13194	12916	11526	12661
275-31	%	1.12%	-3.18%	-3.19%	-1.00%	-0.26%	-1.63%	0.29%	0.57%	3.62%	2.08%	-1.68%	2.15%	-0.07%
US 63 1.5 MI NORTH OF IA 9	2013	2428	2497	2809	2850	3141	3327	3400	3506	3298	3205	2936	2795	3016
LIME SPRINGS	2012	2334	2464	2780	2905	3088	3190	3210	3224	3035	2961	2937	2712	2903
276-45	%	4.03%	1.34%	1.04%	-1.89%	1.72%	4.29%	5.92%	8.75%	8.67%	8.24%	-0.03%	3.06%	3.89%
US 34 1.1 MI EAST OF IA 16	2013	6915	6969	7808	8106	8379	8682	8553	8781	8556	8500	8169	7597	8085
AGENCY	2012	6970	7364	7934	8049	8482	8671	8423	8598	8329	8197	8098	7449	8047
277-90	%	-0.79%	-5.36%	-1.59%	0.71%	-1.21%	0.13%	1.54%	2.13%	2.73%	3.70%	0.88%	1.99%	0.47%
IA 141 0.5 MI NORTH OF IA 44	2013	18517	18962	19965	21946	22838	24088	23729	24092	22885	22371	21054	19976	21702
GRIMES	2012	18799	19157	20299	21542	23577	24152	23174	23804	22667	22210	21553	20198	21762
278-77	%	-1.50%	-1.02%	-1.65%	1.88%	-3.13%	-0.26%	2.39%	1.21%	0.96%	0.72%	-2.32%	-1.10%	-0.28%

**COMPARISON OF THE MONTHLY AVERAGE DAILY TRAFFIC (MADT) FOR 2013 AND 2012
AND ANNUAL AVERAGE DAILY TRAFFIC (AADT)**

RURAL PRIMARY

LOCATION AND STATION NUMBER		JAN. MADT	FEB. MADT	MARCH MADT	APRIL MADT	MAY MADT	JUNE MADT	JULY MADT	AUG. MADT	SEPT. MADT	OCT. MADT	NOV. MADT	DEC. MADT	ANNUAL AADT
IA 13 1.5 MI NORTH OF CO RD C64	2013	1933	2050	2160	2281	2477	2627	2581	2562	2542	2598	2296	2192	2358
DUNDEE	2012	1955	2070	2176	2310	2440	2635	2676	2461	2521	2495	2280	2166	2349
279-28	%	-1.13%	-0.97%	-0.74%	-1.26%	1.52%	-0.30%	-3.55%	4.10%	0.83%	4.13%	0.70%	1.20%	0.38%
IA 2 2.0 MI WEST OF I 35	2013	1086	1044	1150	1243	1353	1354	1365	1296	1286	1261	1212	1136	1232
LEON	2012	1117	1069	1154	1266	1324	1361	1308	1292	1326	1369	1368	1192	1262
280-27	%	-2.78%	-2.34%	-0.35%	-1.82%	2.19%	-0.51%	4.36%	0.31%	-3.02%	-7.89%	-11.40%	-4.70%	-2.38%
US 151 4.4 MI SOUTH OF IA 38	2013	8954	9253	10059	10698	11491	12064	12762	12097	11479	11632	10843	9943	10940
MONTICELLO	2012	8844	9524	10081	10685	11399	11900	12382	11909	11422	11147	10694	9692	10807
281-53	%	1.24%	-2.85%	-0.22%	0.12%	0.81%	1.38%	3.07%	1.58%	0.50%	4.35%	1.39%	2.59%	1.23%
US 52 9.5 MI SOUTH OF IA 62	2013	566	569	661	744	829	922	1029	1009	980	994	734	551	799
BELLEVUE	2012	577	621	749	817	982	1011	1067	1001	997	938	743	597	842
282-49	%	-1.91%	-8.37%	-11.75%	-8.94%	-15.58%	-8.80%	-3.56%	0.80%	-1.71%	5.97%	-1.21%	-7.71%	-5.11%
US 61/218 0.8 MI SOUTH OF N JCT US 61/218	2013	7137	7474	7764	8262	8196	8397	8125	8585	8339	8268	7753	7752	8004
KEOKUK	2012	7279	7685	7937	8110	8349	8525	8164	8446	8219	8301	7714	7376	8009
283-56	%	-1.95%	-2.75%	-2.18%	1.87%	-1.83%	-1.50%	-0.48%	1.65%	1.46%	-0.40%	0.51%	5.10%	-0.06%
IA 9 1.0 MI WEST OF 6TH ST	2013	1520	1574	1693	1858	2070	2178	2306	2352	2119	2111	1830	1663	1939
LANSING	2012	1636	1658	1850	1970	2271	2258	2330	2339	2176	2118	1770	1744	2010
284-03	%	-7.09%	-5.07%	-8.49%	-5.69%	-8.85%	-3.54%	-1.03%	0.56%	-2.62%	-0.33%	3.39%	-4.64%	-3.53%
US 20 1.3 MI EAST OF IA 4	2013	3470	3708	4386	4368	4824	5108	5459	5559	5272	5058	5017	4716	4745
ROCKWELL CITY	2012	2483	2592	2970	3273	3584	3624	3667	3716	3502	3467	4090	3916	3407
285-13	%	39.75%	43.06%	47.68%	33.46%	34.60%	40.95%	48.87%	49.60%	50.54%	45.89%	22.67%	20.43%	39.27%
TOTAL	2013	338988	349642	369663	391412	411356	411728	415230	423965	406562	400392	380155	366367	
	2012	340790	356621	376308	394805	418426	413418	409322	416170	402238	394057	385150	359749	
	%	-0.53%	-1.96%	-1.77%	-0.86%	-1.69%	-0.41%	1.44%	1.87%	1.07%	1.61%	-1.30%	1.84%	

NOTE: Numbers in red denote estimated traffic due to road construction, inaccurate, or insufficient data. Monthly data for sites without comparable data are not include in TOTAL.

**COMPARISON OF THE MONTHLY AVERAGE DAILY TRAFFIC (MADT) FOR 2013 AND 2012
AND ANNUAL AVERAGE DAILY TRAFFIC (AADT)**

RURAL COUNTY - PAVED

LOCATION AND STATION NUMBER		JAN. MADT	FEB. MADT	MARCH MADT	APRIL MADT	MAY MADT	JUNE MADT	JULY MADT	AUG. MADT	SEPT. MADT	OCT. MADT	NOV. MADT	DEC. MADT	ANNUAL AADT
CO RD P14 2.7 MI NORTH OF CO RD E33 CHURDAN 300-37	2013	189	196	210	239	275	261	244	239	253	293	245	203	237
	2012	196	197	253	302	318	314	286	287	322	282	258	203	268
	%	-3.57%	-0.51%	-17.00%	-20.86%	-13.52%	-16.88%	-14.69%	-16.72%	-21.43%	3.90%	-5.04%	0.00%	-11.57%
CO RD S14 0.8 MI SOUTH OF CO RD E29 NEVADA 301-85	2013	793	787	816	1000	1071	1150	1112	1041	1018	1051	953	791	965
	2012	863	846	947	1028	1112	1106	1085	1017	1061	1028	949	815	988
	%	-8.11%	-6.97%	-13.83%	-2.72%	-3.69%	3.98%	2.49%	2.36%	-4.05%	2.24%	0.42%	-2.94%	-2.33%
CO RD M55 0.2 MI NORTH OF IA 141 MANILLA 302-24	2013	648	707	765	818	834	833	819	829	832	862	797	697	787
	2012	685	671	798	834	924	876	856	832	815	841	778	661	798
	%	-5.40%	5.37%	-4.14%	-1.92%	-9.74%	-4.91%	-4.32%	-0.36%	2.09%	2.50%	2.44%	5.45%	-1.38%
CO RD K45 2.25 MI SOUTH OF IA 175 ONAWA 303-67	2013	928	1013	1060	1189	1302	1270	1336	1240	1213	1215	1162	1011	1162
	2012	1045	987	1168	1209	NO DATA	NO DATA	NO DATA	1239	1227	1188	1151	987	NO AADT
	%	-11.20%	2.63%	-9.25%	-1.65%				0.08%	-1.14%	2.27%	0.96%	2.43%	
CO RD V45 3.5 MI NORTH OF IA 92 SIGOURNEY 304-54	2013	568	568	621	707	720	701	686	646	657	690	643	549	646
	2012	567	581	664	720	722	695	675	674	NO DATA	NO DATA	680	608	NO AADT
	%	0.18%	-2.24%	-6.48%	-1.81%	-0.28%	0.86%	1.63%	-4.15%			-5.44%	-9.70%	
CO RD E53 1.75 MI EAST OF IA 25 SCRANTON 306-37	2013	396	416	433	516	546	555	544	552	535	570	492	410	497
	2012	413	424	544	558	602	589	537	550	587	570	508	410	524
	%	-4.12%	-1.89%	-20.40%	-7.53%	-9.30%	-5.77%	1.30%	0.36%	-8.86%	0.00%	-3.15%	0.00%	-5.15%
CO RD R38 2.2 MI NORTH OF CO RD C54 CLARION 307-99	2013	1190	1206	1204	1403	1443	1494	1474	1477	1459	1582	1385	1235	1379
	2012	1090	1150	1296	1355	1433	1466	1373	1405	1490	1458	1337	1211	1339
	%	9.17%	4.87%	-7.10%	3.54%	0.70%	1.91%	7.36%	5.12%	-2.08%	8.50%	3.59%	1.98%	2.99%
CO RD N32 1.6 MI NORTH OF IA 9 ESTHERVILLE 308-32	2013	249	249	267	311	370	363	361	333	363	395	336	276	323
	2012	263	268	328	369	NO DATA	350	342	368	392	372	328	267	NO AADT
	%	-5.32%	-7.09%	-18.60%	-15.72%		3.71%	5.56%	-9.51%	-7.40%	6.18%	2.44%	3.37%	
CO RD K52 1.5 MI SOUTH OF US 18 HULL 309-84	2013	1094	1132	1129	1148	1338	1314	1231	1271	1312	1403	1282	1089	1228
	2012	941	909	1094	1242	1340	1295	1231	1211	1290	1284	1252	1106	1178
	%	16.26%	24.53%	3.20%	-7.57%	-0.15%	1.47%	0.00%	4.95%	1.71%	9.27%	2.40%	-1.54%	4.24%
CO RD Y52 1.5 MI SOUTH OF US 30 GRAND MOUND 310-23	2013	409	409	454	517	578	592	NO DATA	NO DATA	570	NO DATA	515	438	NO AADT
	2012	396	415	501	529	617	527	494	495	517	512	513	463	498
	%	3.28%	-1.45%	-9.38%	-2.27%	-6.32%	12.33%				10.25%	0.39%	-5.40%	

**COMPARISON OF THE MONTHLY AVERAGE DAILY TRAFFIC (MADT) FOR 2013 AND 2012
AND ANNUAL AVERAGE DAILY TRAFFIC (AADT)**

RURAL COUNTY - PAVED

LOCATION AND STATION NUMBER		JAN. MADT	FEB. MADT	MARCH MADT	APRIL MADT	MAY MADT	JUNE MADT	JULY MADT	AUG. MADT	SEPT. MADT	OCT. MADT	NOV. MADT	DEC. MADT	ANNUAL AADT
CO RD W12 3.5 MI SOUTH OF US 30 WATKINS 311-06	2013	685	676	713	808	868	819	799	823	871	810	757	649	773
	2012	680	720	791	834	874	859	803	820	837	885	802	682	799
	%	0.74%	-6.11%	-9.86%	-3.12%	-0.69%	-4.66%	-0.50%	0.37%	4.06%	-8.47%	-5.61%	-4.84%	-3.25%
CO RD E26 2.7 MI WEST OF CO RD R38 BOONE 312-08	2013	1252	1309	1327	1527	1543	1594	1567	1587	NO DATA	1663	1463	1311	NO AADT
	2012	1330	1367	1542	1675	1627	1618	1582	1623	1619	1574	1469	1270	1525
	%	-5.86%	-4.24%	-13.94%	-8.84%	-5.16%	-1.48%	-0.95%	-2.22%		5.65%	-0.41%	3.23%	
CO RD D42 0.2 MI EAST OF IA 13 MANCHESTER 313-28	2013	483	495	538	634	696	737	692	685	659	689	630	538	623
	2012	479	498	562	633	711	716	655	651	640	651	598	548	612
	%	0.84%	-0.60%	-4.27%	0.16%	-2.11%	2.93%	5.65%	5.22%	2.97%	5.84%	5.35%	-1.82%	1.80%
CO RD 105 1.3 MI EAST OF CO RD S56 NORTHWOOD 314-98	2013	625	628	666	754	763	846	812	817	817	781	706	636	737
	2012	637	658	717	783	805	848	779	761	775	774	747	640	744
	%	-1.88%	-4.56%	-7.11%	-3.70%	-5.22%	-0.24%	4.24%	7.36%	5.42%	0.90%	-5.49%	-0.63%	-0.94%
CO RD 5.5 MI WEST OF US 63 DRAKESVILLE 315-26	2013	497	477	536	666	761	841	911	791	753	689	569	503	666
	2012	493	502	579	671	861	837	907	785	754	690	585	519	682
	%	0.81%	-4.98%	-7.43%	-0.75%	-11.61%	0.48%	0.44%	0.76%	-0.13%	-0.14%	-2.74%	-3.08%	-2.35%
CO RD D36 2.8 MI E OF CO N57 ROCKWELL CITY 316-13	2013	866	927	930	1003	1057	1129	1106	1083	1073	1096	987	907	1014
	2012	1051	1051	1118	1207	1277	1300	1317	1205	1167	1173	1104	918	1157
	%	-17.60%	-11.80%	-16.82%	-16.90%	-17.23%	-13.15%	-16.02%	-10.12%	-8.05%	-6.56%	-10.60%	-1.20%	-12.36%
TOTAL RURAL COUNTY PAVED	2013	10872	11195	11669	13240	12493	13229	12358	13414	11158	13099	12922	11243	
	2012	11129	11244	12902	13949	13223	13396	12428	13428	11357	12770	13059	11308	
	%	-2.31%	-0.44%	-9.56%	-5.08%	-5.52%	-1.25%	-0.56%	-0.10%	-1.75%	2.58%	-1.05%	-0.57%	

NOTE: Numbers in red denote estimated traffic due to road construction, inaccurate, or insufficient data. Monthly data for sites without comparable data are not include in TOTAL.

**COMPARISON OF THE MONTHLY AVERAGE DAILY TRAFFIC (MADT) FOR 2013 AND 2012
AND ANNUAL AVERAGE DAILY TRAFFIC (AADT)**

RURAL COUNTY - GRAVEL

LOCATION AND STATION NUMBER		JAN. MADT	FEB. MADT	MARCH MADT	APRIL MADT	MAY MADT	JUNE MADT	JULY MADT	AUG. MADT	SEPT. MADT	OCT. MADT	NOV. MADT	DEC. MADT	ANNUAL AADT
CO RD B30 0.5 MI EAST OF CO RD L48 PRIMGHAR 400-71	2013 2012 %	18 14 28.57%	10 14 -28.57%	19 13 46.15%	14 19 -26.32%	23 23 0.00%	24 22 9.09%	24 17 41.18%	23 18 27.78%	21 27 -22.22%	42 20 110.00%	27 18 50.00%	19 13 46.15%	22 18 22.22%
LOCAL ROAD 1.80 MI NORTH OF CO RD E36 CLUTIER 401-86	2013 2012 %	25 28 -10.71%	24 27 -11.11%	21 34 -38.24%	32 42 -23.81%	37 51 -27.45%	39 49 -20.41%	46 59 -22.03%	35 37 -5.41%	38 38 0.00%	44 46 -4.35%	35 33 6.06%	31 23 34.78%	34 39 -12.82%
LOCAL ROAD .80 MI EAST OF CO RD V18 CLUTIER 402-86	2013 2012 %	33 46 -28.26%	37 36 2.78%	36 48 -25.00%	45 57 -21.05%	56 64 -12.50%	53 62 -14.52%	60 66 -9.09%	51 49 4.08%	52 56 -7.14%	59 71 -16.90%	46 53 -13.21%	38 39 -2.56%	47 54 -12.96%
CO RD H47 5.0 MI SOUTH OF US 34 ALBIA 403-68	2013 2012 %	85 97 -12.37%	79 87 -9.20%	84 100 -16.00%	91 114 -20.18%	105 109 -3.67%	111 109 1.83%	103 97 6.19%	96 113 -15.04%	108 108 0.00%	112 104 7.69%	114 111 2.70%	112 102 9.80%	100 104 -3.85%
LOCAL ROAD 2.5 MI NORTH OF US 18 BASSETT 405-19	2013 2012 %	36 41 -12.20%	36 40 -10.00%	36 43 -16.28%	47 52 -9.62%	52 61 -14.75%	57 60 -5.00%	58 49 18.37%	54 54 0.00%	53 54 -1.85%	59 57 3.51%	58 55 5.45%	47 45 4.44%	49 51 -3.92%
LOCAL ROAD 2.0 MI EAST OF US 169 LORIMOR 406-88	2013 2012 %	62 60 3.33%	61 54 12.96%	64 65 -1.54%	87 75 16.00%	77 72 6.94%	75 82 -8.54%	74 73 1.37%	66 84 -21.43%	59 76 NO DATA	71 76 -6.58%	78 74 5.41%	68 69 -1.45%	70 NO AADT
CO ROAD H23 2.0 MI EAST OF US 169 LORIMOR 407-88	2013 2012 %	70 61 14.75%	67 60 11.67%	71 73 -2.74%	82 76 7.89%	81 95 -14.74%	89 88 1.14%	93 77 20.78%	76 72 5.56%	65 85 -23.53%	74 80 -7.50%	82 76 7.89%	69 74 -6.76%	77 76 1.32%
TOTAL RURAL COUNTY GRAVEL	2013 2012 %	329 347 -5.19%	314 318 -1.26%	331 376 -11.97%	398 435 -8.51%	431 475 -9.26%	448 472 -5.08%	458 438 4.57%	401 427 -6.09%	337 368 -8.42%	461 454 1.54%	440 420 4.76%	384 365 5.21%	
TOTAL RURAL COUNTY PAVED & GRAVEL	2013 2012 %	11201 11476 -2.40%	11509 11562 -0.46%	12000 13278 -9.62%	13638 14384 -5.19%	12924 13698 -5.65%	13677 13868 -1.38%	12816 12866 -0.39%	13815 13855 -0.29%	11495 11725 -1.96%	13560 13224 2.54%	13362 13479 -0.87%	11627 11673 -0.39%	

NOTE: Numbers in red denote estimated traffic due to road construction, inaccurate, or insufficient data. Monthly data for sites without comparable data are not included in TOTAL.

**COMPARISON OF THE MONTHLY AVERAGE DAILY TRAFFIC (MADT) FOR 2013 AND 2012
AND ANNUAL AVERAGE DAILY TRAFFIC (AADT)**

RECREATIONAL PRIMARY

LOCATION AND STATION NUMBER		JAN. MADT	FEB. MADT	MARCH MADT	APRIL MADT	MAY MADT	JUNE MADT	JULY MADT	AUG. MADT	SEPT. MADT	OCT. MADT	NOV. MADT	DEC. MADT	ANNUAL AADT
US 71 0.1 MI SOUTH OF CO RD B14 FOSTORIA 500-21	2013	NO DATA	NO DATA	NO DATA	NO DATA	NO DATA	NO DATA	NO DATA	NO DATA	NO DATA	7982	7225	7045	NO AADT
	2012	6700	6682	7472	8274	9274	NO DATA	NO DATA	NO DATA	NO DATA	NO DATA	NO DATA	NO DATA	NO AADT
	%													
IA 5 3.8 MI SOUTH OF US 34 MORAVIA 501-68	2013	3047	3047	3377	3655	3913	4200	4392	4335	3974	3792	3498	3298	3711
	2012	3160	3243	3544	3792	4268	4323	4378	4100	3940	3699	3510	3306	3772
	%	-3.58%	-6.04%	-4.71%	-3.61%	-8.32%	-2.85%	0.32%	5.73%	0.86%	2.51%	-0.34%	-0.24%	-1.62%
IA 415 0.5 MI WEST OF NW POLK CITY RD POLK CITY 503-77	2013	5157	5360	5510	6744	7159	7885	7988	7810	7550	7216	6329	5653	6697
	2012	5113	5136	5975	6495	7608	7753	7352	7028	7039	6590	6018	5233	6445
	%	0.86%	4.36%	-7.78%	3.83%	-5.90%	1.70%	8.65%	11.13%	7.26%	9.50%	5.17%	8.03%	3.91%
TOTAL RECREATIONAL PRIMARY	2013	8204	8407	8887	10399	11072	12085	12380	12145	11524	11008	9827	8951	
	2012	8273	8379	9519	10287	11876	12076	11730	11128	10979	10289	9528	8539	
	%	-0.83%	0.33%	-6.64%	1.09%	-6.77%	0.07%	5.54%	9.14%	4.96%	6.99%	3.14%	4.82%	

RECREATIONAL SECONDARY

LOCATION AND STATION NUMBER		JAN. MADT	FEB. MADT	MARCH MADT	APRIL MADT	MAY MADT	JUNE MADT	JULY MADT	AUG. MADT	SEPT. MADT	OCT. MADT	NOV. MADT	DEC. MADT	ANNUAL AADT
CO RD F25 0.1 MI WEST OF CO RD P18 SPRINGBROOK STATE PARK 600-39	2013	105	111	123	178	239	234	293	228	208	193	148	113	181
	2012	110	109	155	187	260	262	270	244	206	189	153	114	188
	%	-4.55%	1.83%	-20.65%	-4.81%	-8.08%	-10.69%	8.52%	-6.56%	0.97%	2.12%	-3.27%	-0.88%	-3.72%
ENTRANCE TO GEORGE WYTH STATE PARK WATERLOO 602-07	2013	279	256	304	836	1134	NO DATA	1567	1183	969	501	281	225	NO AADT
	2012	357	308	864	775	1408	1905	1560	1078	905	467	321	253	850
	%	-21.85%	-16.88%	-64.81%	7.87%	-19.46%	0.45%	9.74%	7.07%	7.28%	-12.46%	-11.07%		
ENTRANCE TO GREEN VALLEY STATE PARK GREEN VALLEY STATE PARK 603-88	2013	119	125	161	260	453	509	537	413	350	228	138	100	283
	2012	126	127	232	231	496	506	385	308	326	183	126	95	262
	%	-5.56%	-1.57%	-30.60%	12.55%	-8.67%	0.59%	39.48%	34.09%	7.36%	24.59%	9.52%	5.26%	8.02%
TOTAL RECREATIONAL SECONDARY	2013	503	492	588	1274	1826	743	2397	1824	1527	922	567	438	
	2012	593	544	1251	1193	2164	2673	2215	1630	1437	839	600	462	
	%	-15.18%	-9.56%	-53.00%	6.79%	-15.62%	-72.20%	8.22%	11.90%	6.26%	9.89%	-5.50%	-5.19%	
TOTAL RECREATIONAL PRIMARY AND SECONDARY	2013	8707	8899	9475	11673	12898	12828	14777	13969	13051	11930	10394	9389	
	2012	8866	8923	10770	11480	14040	14749	13945	12758	12416	11128	10128	9001	
	%	-1.79%	-0.27%	-12.02%	1.68%	-8.13%	-13.02%	5.97%	9.49%	5.11%	7.21%	2.63%	4.31%	

NOTE: Numbers in red denote estimated traffic due to road construction, inaccurate, or insufficient data. Monthly data for sites without comparable data are not include in TOTAL.

**COMPARISON OF THE MONTHLY AVERAGE DAILY TRAFFIC (MADT) FOR 2013 AND 2012
AND ANNUAL AVERAGE DAILY TRAFFIC (AADT)**

MUNICIPAL INTERSTATE

LOCATION AND STATION NUMBER		JAN. MADT	FEB. MADT	MARCH MADT	APRIL MADT	MAY MADT	JUNE MADT	JULY MADT	AUG. MADT	SEPT. MADT	OCT. MADT	NOV. MADT	DEC. MADT	ANNUAL AADT
I 380 BTWN WILSON AVE AND 33RD AVE CEDAR RAPIDS 701-57	2013	59115	63389	64742	68865	68617	70597	67492	70823	69869	71026	65516	59493	66629
	2012	59244	64755	66257	69050	68262	70233	67369	69543	69433	69227	66318	59734	66619
	%	-0.22%	-2.11%	-2.29%	-0.27%	0.52%	0.52%	0.18%	1.84%	0.63%	2.60%	-1.21%	-0.40%	0.02%
I 380 AT J AVE BRIDGE S OF COLDSTREAM CEDAR RAPIDS 703-57	2013	74214	78365	79936	85186	85008	87731	83201	86117	85339	86626	81277	74436	82286
	2012	74863	81057	82322	85420	85846	87904	84617	85842	84788	85140	82072	75062	82911
	%	-0.87%	-3.32%	-2.90%	-0.27%	-0.98%	-0.20%	-1.67%	0.32%	0.65%	1.75%	-0.97%	-0.83%	-0.75%
I 29/80 0.6 MI WEST OF IA 192 COUNCIL BLUFFS 704-78	2013	66354	67989	73374	75997	79190	82669	81503	81811	77630	NO DATA	NO DATA	NO DATA	NO AADT
	2012	67609	68341	74557	76043	78823	81811	79935	82012	77830	75785	74126	69375	75521
	%	-1.86%	-0.52%	-1.59%	-0.06%	0.47%	1.05%	1.96%	-0.25%	-0.26%				
I 74 0.6 MI SOUTH OF US 6 BETTENDORF 705-82	2013	44640	46423	48316	49778	49678	52392	51662	52189	50398	50939	49447	46991	49404
	2012	43727	47042	48474	49530	47577	47935	48481	48667	48133	48585	47605	46077	47653
	%	2.09%	-1.32%	-0.33%	0.50%	4.42%	9.30%	6.56%	7.24%	4.71%	4.85%	3.87%	1.98%	3.67%
I 29 AT IOWA/S. DAKOTA BORDER SIOUX CITY 707-97	2013	NO DATA	NO DATA	NO DATA	NO DATA	NO DATA	NO DATA	NO DATA	NO DATA	NO DATA	NO DATA	NO DATA	NO DATA	NO AADT
	2012	NO DATA	NO DATA	NO DATA	NO DATA	NO DATA	NO DATA	NO DATA	NO DATA	NO DATA	NO DATA	NO DATA	NO DATA	NO AADT
	%													
I 280 0.3 MI SOUTH OF IA 22 DAVENPORT 708-82	2013	NO DATA	NO DATA	NO DATA	NO DATA	NO DATA	NO DATA	NO DATA	22796	20726	20465	18549	16612	NO AADT
	2012	17342	18283	19950	NO DATA	NO DATA	NO DATA	NO DATA	NO DATA	NO DATA	NO DATA	NO DATA	NO DATA	NO AADT
	%													
I 35 NORTH OF ORALABOR RD ANKENY 709-77	2013	51630	54114	56897	60933	61256	64355	64016	66746	62136	63493	59636	55119	60027
	2012	50567	52583	55886	58604	59877	62267	61033	63998	59970	61219	58577	50757	57945
	%	2.10%	2.91%	1.81%	3.97%	2.30%	3.35%	4.89%	4.29%	3.61%	3.71%	1.81%	8.59%	3.59%
I 235 E INNERLEG OF 35TH ST WEST DES MOINES 710-77	2013	NO DATA	NO DATA	NO DATA	NO DATA	NO DATA	NO DATA	NO DATA	NO DATA	NO DATA	NO DATA	NO DATA	NO DATA	NO AADT
	2012	NO DATA	NO DATA	NO DATA	NO DATA	NO DATA	NO DATA	NO DATA	NO DATA	NO DATA	NO DATA	NO DATA	NO DATA	NO AADT
	%													
I 235 SOUTH OF GUTHRIE AVE DES MOINES 711-77	2013	NO DATA	NO DATA	NO DATA	NO DATA	NO DATA	NO DATA	NO DATA	NO DATA	NO DATA	NO DATA	NO DATA	NO DATA	NO AADT
	2012	61737	65164	65503	67761	67132	69050	65316	71221	NO DATA	NO DATA	NO DATA	NO DATA	NO AADT
	%													
I 235 E OF SECOND AVE DES MOINES 712-77	2013	NO DATA	NO DATA	NO DATA	NO DATA	NO DATA	NO DATA	NO DATA	NO DATA	NO DATA	NO DATA	NO DATA	NO DATA	NO AADT
	2012	NO DATA	NO DATA	NO DATA	NO DATA	NO DATA	NO DATA	NO DATA	NO DATA	NO DATA	NO DATA	NO DATA	NO DATA	NO AADT
	%													
I 35/80 E OF MERLE HAY RD DES MOINES 713-77	2013	NO DATA	NO DATA	NO DATA	NO DATA	NO DATA	NO DATA	NO DATA	NO DATA	NO DATA	NO DATA	NO DATA	NO DATA	NO AADT
	2012	80389	82575	86790	NO DATA	NO DATA	NO DATA	NO DATA	NO DATA	NO DATA	NO DATA	NO DATA	NO DATA	NO AADT
	%													
I 235 0.4 MI NORTH OF EUCLID AVE DES MOINES 714-77	2013	NO DATA	NO DATA	NO DATA	NO DATA	NO DATA	NO DATA	NO DATA	NO DATA	NO DATA	66378	62187	57911	NO AADT
	2012	NO DATA	NO DATA	NO DATA	NO DATA	NO DATA	NO DATA	NO DATA	NO DATA	NO DATA	NO DATA	NO DATA	NO DATA	NO AADT
	%													
TOTAL MUNICIPAL INTERSTATE	2013	295953	310280	323265	340759	343749	357744	347874	357686	345372	272084	255876	236039	
	2012	296010	313778	327496	338647	340385	350150	341435	350062	340154	264171	254572	231630	
	%	-0.02%	-1.11%	-1.29%	0.62%	0.99%	2.17%	1.89%	2.18%	1.53%	3.00%	0.51%	1.90%	

NOTE: Numbers in red denote estimated traffic due to road construction, inaccurate, or insufficient data. Monthly data for sites without comparable data are not include in TOTAL.

**COMPARISON OF THE MONTHLY AVERAGE DAILY TRAFFIC (MADT) FOR 2013 AND 2012
AND ANNUAL AVERAGE DAILY TRAFFIC (AADT)**

MUNICIPAL PRIMARY

LOCATION AND STATION NUMBER		JAN. MADT	FEB. MADT	MARCH MADT	APRIL MADT	MAY MADT	JUNE MADT	JULY MADT	AUG. MADT	SEPT. MADT	OCT. MADT	NOV. MADT	DEC. MADT	ANNUAL AADT
US 71 W OF MEMPHIS AVE	2013	9692	9865	10420	11214	13114	13804	14827	13706	12566	11547	10492	10172	11777
SPIRIT LAKE	2012	10016	10058	10841	11464	13110	13754	14443	13061	12042	11172	10545	10168	11723
802-30	%	-3.23%	-1.92%	-3.88%	-2.18%	0.03%	0.36%	2.66%	4.94%	4.35%	3.36%	-0.50%	0.04%	0.46%
IA 12 ON VIADUCT E OF COURT ST	2013	18357	19850	20338	20972	20965	20814	20403	21564	21580	22244	21161	19459	20642
SIOUX CITY	2012	20186	21126	22136	23119	22874	NO DATA	NO DATA	NO DATA	NO DATA	NO DATA	19960	18686	NO AADT
803-97	%	-9.06%	-6.04%	-8.12%	-9.29%	-8.35%						6.02%	4.14%	
IA 4 N OF 4TH AVE NW	2013	2667	2683	2917	2961	3199	3410	3447	3472	3352	3194	2982	2807	3091
POCAHONTAS	2012	2732	2787	3086	3331	3564	3682	3686	3592	3559	3388	3209	2865	3290
804-76	%	-2.38%	-3.73%	-5.48%	-11.11%	-10.24%	-7.39%	-6.48%	-3.34%	-5.82%	-5.73%	-7.07%	-2.02%	-6.05%
IA 148 S OF 11TH ST	2013	2256	2276	2441	2593	2845	3032	3207	2894	2762	2572	2453	2308	2637
CORNING	2012	2351	2312	2697	2927	3220	3324	3414	2988	2894	2636	2535	2325	2802
805-02	%	-4.04%	-1.56%	-9.49%	-11.41%	-11.65%	-8.78%	-6.06%	-3.15%	-4.56%	-2.43%	-3.23%	-0.73%	-5.89%
US 6/HICKMAN RD E OF SHASTA PLACE	2013	16796	17515	18084	19155	19521	20021	19868	20419	20938	21038	19841	17481	19223
WINDSOR HEIGHTS	2012	17221	17771	18527	19253	19710	19880	19238	19111	18662	18759	18489	17555	18681
806-77	%	-2.47%	-1.44%	-2.39%	-0.51%	-0.96%	0.71%	3.27%	6.84%	12.20%	12.15%	7.31%	-0.42%	2.90%
US 71 S OF BIRCH ST	2013	4023	4116	4461	4588	4945	4969	4899	4751	4744	4817	4511	4389	4601
AUDUBON	2012	4143	4154	4746	4829	4953	4880	4777	4830	4860	4786	4680	4452	4675
808-05	%	-2.90%	-0.91%	-6.01%	-4.99%	-0.16%	1.82%	2.55%	-1.64%	-2.39%	0.65%	-3.61%	-1.42%	-1.58%
IA 14 N OF WOODLAND ST	2013	5006	5137	5431	5891	6174	6306	5882	6062	6072	6126	5705	5155	5746
MARSHALLTOWN	2012	5124	5410	5771	5915	6279	6280	6110	6024	6215	6076	5726	5105	5836
809-64	%	-2.30%	-5.05%	-5.89%	-0.41%	-1.67%	0.41%	-3.73%	0.63%	-2.30%	0.82%	-0.37%	0.98%	-1.54%
IA 92 WEST OF 'N' ST	2013	9549	9795	10242	11510	11785	11844	11681	11296	11704	11577	10775	10062	10985
INDIANOLA	2012	9925	9984	10884	11698	12093	11744	11522	11391	11407	11264	10799	9868	11047
810-91	%	-3.79%	-1.89%	-5.90%	-1.61%	-2.55%	0.85%	1.38%	-0.83%	2.60%	2.78%	-0.22%	1.97%	-0.56%
IA 192 SOUTH OF AVE 'N' AVE	2013	5320	5446	5834	6210	6169	6263	6071	6227	6307	6336	5814	5395	5949
COUNCIL BLUFFS	2012	5571	5737	6287	6376	6453	6389	6046	6102	6089	5977	5655	5361	6004
811-78	%	-4.51%	-5.07%	-7.21%	-2.60%	-4.40%	-1.97%	0.41%	2.05%	3.58%	6.01%	2.81%	0.63%	-0.92%
IA 122 WEST OF VIRGINIA AVE	2013	10117	10640	10485	11518	11566	11110	10430	10903	11403	11187	10651	10093	10842
MASON CITY	2012	10453	11395	11842	11923	12011	11132	10496	10912	12523	12686	11941	10315	11469
812-17	%	-3.21%	-6.63%	-11.46%	-3.40%	-3.70%	-0.20%	-0.63%	-0.08%	-8.94%	-11.82%	-10.80%	-2.15%	-5.47%

**COMPARISON OF THE MONTHLY AVERAGE DAILY TRAFFIC (MADT) FOR 2013 AND 2012
AND ANNUAL AVERAGE DAILY TRAFFIC (AADT)**

MUNICIPAL PRIMARY

LOCATION AND STATION NUMBER		JAN. MADT	FEB. MADT	MARCH MADT	APRIL MADT	MAY MADT	JUNE MADT	JULY MADT	AUG. MADT	SEPT. MADT	OCT. MADT	NOV. MADT	DEC. MADT	ANNUAL AADT
US 6 EAST OF PINE ST DAVENPORT 813-82	2013	18773	19920	20216	20959	21210	21055	20289	20377	20061	20166	19662	19576	20189
	2012	19650	21287	21502	21962	22017	22233	23056	22954	22913	23002	22604	21419	22050
	%	-4.46%	-6.42%	-5.98%	-4.57%	-3.67%	-5.30%	-12.00%	-11.23%	-12.45%	-12.33%	-13.02%	-8.60%	-8.44%
IA 922 NORTH OF WILEY BLVD CEDAR RAPIDS 815-57	2013	NO DATA	NO DATA	NO DATA	NO DATA	NO DATA	NO DATA	NO DATA	NO DATA	NO DATA	NO DATA	NO DATA	NO DATA	NO AADT
	2012	9307	9736	10367	10576	11089	11111	10717	10536	10287	10275	10132	NO DATA	NO AADT
	%													
US 34 WEST OF US 61 WEST BURLINGTON 816-29	2013	11862	12149	12730	13476	13538	13792	13327	13602	13125	12805	12494	12008	12909
	2012	11940	12741	13250	13433	13506	13835	13391	13388	13372	13412	13383	12422	13173
	%	-0.65%	-4.65%	-3.92%	0.32%	0.24%	-0.31%	-0.48%	1.60%	-1.85%	-4.53%	-6.64%	-3.33%	-2.00%
IA 9 EAST OF 14TH ST OSAGE 819-66	2013	4325	4617	4943	5345	5632	5475	5591	5750	5539	5409	4987	4798	5200
	2012	4362	4577	5073	5410	5885	5835	5678	5257	5399	5223	4989	4802	5207
	%	-0.85%	0.87%	-2.56%	-1.20%	-4.30%	-6.17%	-1.53%	9.38%	2.59%	3.56%	-0.04%	-0.08%	-0.13%
IA 17 NORTH OF NW 11TH ST EAGLE GROVE 820-99	2013	2545	2637	2859	2903	2901	3126	3061	3087	3081	3008	2789	2698	2891
	2012	2567	2536	2809	2874	3031	2952	2903	2928	2904	2870	2765	2579	2810
	%	-0.86%	3.98%	1.78%	1.01%	-4.29%	5.89%	5.44%	5.43%	6.10%	4.81%	0.87%	4.61%	2.88%
IA 4 SOUTH OF EDGEWOOD AVE EAST JEFFERSON 821-37	2013	3104	3355	3567	3934	4301	4138	3928	4098	4209	4226	3681	3437	3832
	2012	3439	3413	3643	NO DATA	NO DATA	NO DATA	NO DATA	NO DATA	NO DATA	NO DATA	3685	3379	NO AADT
	%	-9.74%	-1.70%	-2.09%								-0.11%	1.72%	
US 6 EAST OF SYCAMORE ST IOWA CITY 823-52	2013	NO DATA	NO DATA	NO DATA	NO DATA	NO DATA	NO DATA	NO DATA	NO DATA	NO DATA	NO DATA	NO DATA	NO DATA	NO AADT
	2012	18626	19802	20556	21038	21668	21676	20705	20952	NO DATA	NO DATA	NO DATA	NO DATA	NO AADT
	%													
US 69 NORTH OF 15TH ST AMES 824-85	2013	15687	16619	17329	18371	17987	17853	17481	18333	18163	18392	17464	17753	17619
	2012	16164	16820	17161	17939	17992	17315	NO DATA	NO DATA	18079	17841	17196	16907	NO AADT
	%	-2.95%	-1.20%	0.98%	2.41%	-0.03%	3.11%			0.46%	3.09%	1.56%	5.00%	
US 65 1.5 MI NORTH OF I-80 BONDURANT 826-77	2013	10952	11242	11923	13254	13268	13804	13484	14674	13423	13482	12493	11800	12817
	2012	11205	11463	12191	12840	13666	13619	13098	NO DATA	NO DATA	12666	12377	11347	NO AADT
	%	-2.26%	-1.93%	-2.20%	3.22%	-2.91%	1.36%	2.95%			6.44%	0.94%	3.99%	
US 61/151 @ MISSISSIPPI RIVER BRIDGE DUBUQUE 827-31	2013	17888	18215	19945	21749	22777	23343	23438	23700	22676	22731	20872	19235	21381
	2012	17946	19863	21372	21746	22836	23803	23695	23343	22582	22116	21015	19020	21611
	%	-0.32%	-8.30%	-6.68%	0.01%	-0.26%	-1.93%	-1.08%	1.53%	0.42%	2.78%	-0.68%	1.13%	-1.06%

**COMPARISON OF THE MONTHLY AVERAGE DAILY TRAFFIC (MADT) FOR 2013 AND 2012
AND ANNUAL AVERAGE DAILY TRAFFIC (AADT)**

MUNICIPAL PRIMARY

LOCATION AND STATION NUMBER		JAN. MADT	FEB. MADT	MARCH MADT	APRIL MADT	MAY MADT	JUNE MADT	JULY MADT	AUG. MADT	SEPT. MADT	OCT. MADT	NOV. MADT	DEC. MADT	ANNUAL AADT
IA 150 SOUTH OF 12TH ST OELWEIN 828-33	2012	5311	5831	5961	6265	6694	6899	6735	6739	6772	6618	6048	5788	6305
	2013	5511	5905	6294	6579	6991	7042	6582	6593	6479	6303	6107	5862	6354
	2012	-3.63%	-1.25%	-5.29%	-4.77%	-4.25%	-2.03%	2.32%	2.21%	4.52%	5.00%	-0.97%	-1.26%	-0.77%
US 59 SOUTH OF 5TH AVENUE SHENANDOAH 829-73	2013	NO DATA	NO DATA	NO DATA	NO DATA	NO DATA	NO DATA	NO DATA	NO DATA	NO DATA	NO DATA	NO DATA	NO DATA	NO AADT
	2012	8106	8312	8870	8969	9691	NO DATA	NO DATA	NO DATA	NO DATA	NO DATA	NO DATA	NO DATA	NO AADT
	%													
IA 23 1.0 MI SOUTH OF IA 92 OSKALOOSA 830-62	2013	2444	2568	2650	2826	2812	3071	2788	2807	2888	2933	2621	2501	2742
	2012	2530	2601	2875	2880	2977	2954	2795	2825	2992	2831	2729	2536	2794
	%	-3.40%	-1.27%	-7.83%	-1.88%	-5.54%	3.96%	-0.25%	-0.64%	-3.48%	3.60%	-3.96%	-1.38%	-1.86%
IA 5 WEST OF FLEUR DRIVE DES MOINES 831-92	2013	20407	20280	21225	23156	23435	24664	23421	24338	23286	23230	21909	21514	22572
	2012	20338	20541	21731	22959	23797	24749	23468	24596	23488	23495	22702	21389	22771
	%	0.34%	-1.27%	-2.33%	0.86%	-1.52%	-0.34%	-0.20%	-1.05%	-0.86%	-1.13%	-3.49%	0.58%	-0.87%
TOTAL MUNICIPAL PRIMARY	2013	197081	204756	214001	224916	230537	213841	192446	180130	195439	207168	219405	208429	
	2012	203374	212481	224718	229457	236965	215402	194398	179895	196459	206503	223091	208362	
	%	-3.09%	-3.64%	-4.77%	-1.98%	-2.71%	-0.72%	-1.00%	0.13%	-0.52%	0.32%	-1.65%	0.03%	

NOTE: Numbers in red denote estimated traffic due to road construction, inaccurate, or insufficient data. Monthly data for sites without comparable data are not include in TOTAL.

**COMPARISON OF THE MONTHLY AVERAGE DAILY TRAFFIC (MADT) FOR 2013 AND 2012
AND ANNUAL AVERAGE DAILY TRAFFIC (AADT)**

MUNICIPAL STREET

LOCATION AND STATION NUMBER		JAN. MADT	FEB. MADT	MARCH MADT	APRIL MADT	MAY MADT	JUNE MADT	JULY MADT	AUG. MADT	SEPT. MADT	OCT. MADT	NOV. MADT	DEC. MADT	ANNUAL AADT
LAKE ST NORTH OF 3RD ST	2013	2229	2413	2467	2619	2817	2832	2906	2759	2703	2649	2394	2257	2587
STORM LAKE	2012	2292	2375	2694	2693	2875	2891	2919	2637	2618	2595	2455	2278	2610
900-11	%	-2.75%	1.60%	-8.43%	-2.75%	-2.02%	-2.04%	-0.45%	4.63%	3.25%	2.08%	-2.48%	-0.92%	-0.88%
2ND AVE N EAST OF 15TH ST	2013	5755	6038	6098	6188	6397	6171	5825	6089	6064	6141	5830	5692	6024
FORT DODGE	2012	6058	6360	6695	6706	6812	6550	6268	6461	6558	6604	6247	6014	6444
901-94	%	-5.00%	-5.06%	-8.92%	-7.72%	-6.09%	-5.79%	-7.07%	-5.76%	-7.53%	-7.01%	-6.68%	-5.35%	-6.52%
LOCUST ST EAST OF SPRING ST	2013	18753	19986	19823	21346	23032	22109	21039	20761	20134	19702	19217	18125	20336
DAVENPORT	2012	18086	19808	20626	21021	23558	NO DATA	NO DATA	NO DATA	NO DATA	22858	NO DATA	19782	NO AADT
902-82	%	3.69%	0.90%	-3.89%	1.55%	-2.23%					-13.81%		-8.38%	
JEFFERSON ST NORTHEAST OF E 5TH ST	2013	5431	5394	5598	6159	6174	5898	5294	5542	5806	5698	5454	5087	5628
OTTUMWA	2012	5235	5493	5646	5737	5863	5718	5289	5497	5713	5695	6323	6178	5699
903-90	%	3.74%	-1.80%	-0.85%	7.36%	5.30%	3.15%	0.09%	0.82%	1.63%	0.05%	-13.74%	-17.66%	-1.25%
JOHNSON AVE WEST OF JANICE DR	2013	8384	8642	8768	9391	9729	9605	9279	9343	9195	9000	8717	8635	9057
CEDAR RAPIDS	2012	8615	8965	9277	9648	10058	9769	9384	9358	9267	9154	8863	8731	9258
904-57	%	-2.68%	-3.60%	-5.49%	-2.66%	-3.27%	-1.68%	-1.12%	-0.16%	-0.78%	-1.68%	-1.65%	-1.10%	-2.17%
NORTHWESTERN AVE NORTH OF 20TH ST	2013	1930	2071	2069	2362	2313	2204	2208	2302	2377	2371	2214	2110	2211
AMES	2012	2029	2103	2102	2307	2258	2053	NO DATA	2094	2472	2314	2150	1982	NO AADT
905-85	%	-4.88%	-1.52%	-1.57%	2.38%	2.44%	7.36%		9.93%	-3.84%	2.46%	2.98%	6.46%	
DUBUQUE ST SOUTH OF DAVENPORT	2013	11543	13355	12712	14456	13805	NO DATA	11968	12919	13801	14189	12685	11740	NO AADT
IOWA CITY	2012	11852	13554	13640	14529	13766	13398	12904	14481	14597	14579	13294	11616	13518
906-52	%	-2.61%	-1.47%	-6.80%	-0.50%	0.28%		-7.25%	-10.79%	-5.45%	-2.68%	-4.58%	1.07%	
COLLEGE ST SOUTH OF 23RD ST	2013	6859	8055	7229	8924	6878	5525	NO DATA	NO DATA	8210	8364	7327	6744	NO AADT
CEDAR FALLS	2012	7566	8803	8223	9045	NO DATA	NO DATA	5946	8135	8901	8516	7415	6210	NO AADT
907-07	%	-9.34%	-8.50%	-12.09%	-1.34%					-7.76%	-1.78%	-1.19%	8.60%	
LINDENWOOD ST SOUTH OF 35TH ST	2013	820	820	872	924	1026	NO DATA	NO DATA	NO DATA	NO DATA	NO DATA	1032	945	NO AADT
SIoux CITY	2012	845	846	943	993	1093	1067	1013	995	945	959	925	899	960
908-97	%	-2.96%	-3.07%	-7.53%	-6.95%	-6.13%						11.57%	5.12%	
HAMILTON BLVD NORTH OF CLIFTON AVE	2013	13203	13425	13790	14735	15720	NO DATA	NO DATA	NO DATA	NO DATA	NO DATA	12011	12118	NO AADT
SIoux CITY	2012	13258	13381	14647	15147	15869	15211	14678	14973	14977	14631	14361	13879	14584
909-97	%	-0.41%	0.33%	-5.85%	-2.72%	-0.94%						-16.36%	-12.69%	

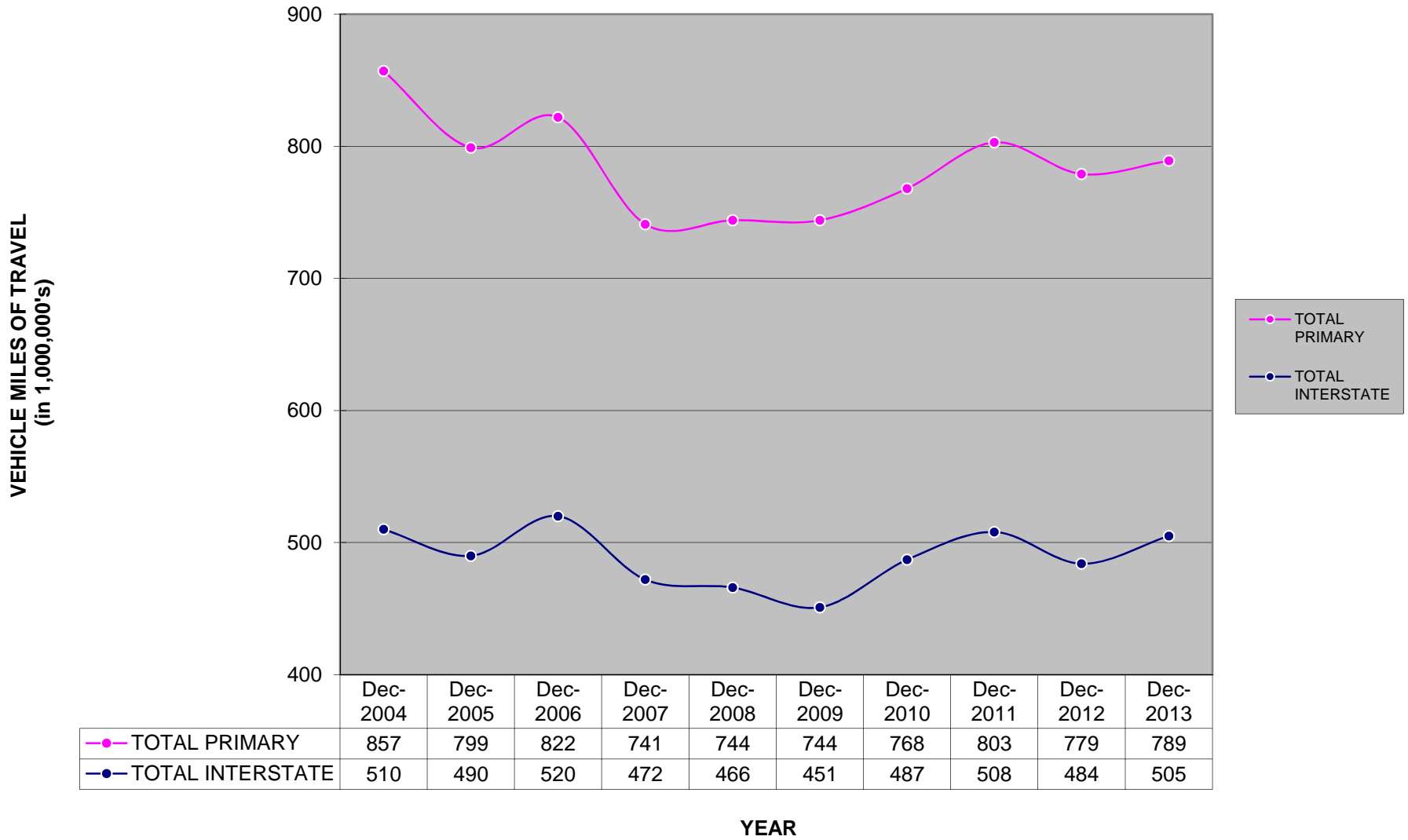
**COMPARISON OF THE MONTHLY AVERAGE DAILY TRAFFIC (MADT) FOR 2013 AND 2012
AND ANNUAL AVERAGE DAILY TRAFFIC (AADT)**

MUNICIPAL STREET

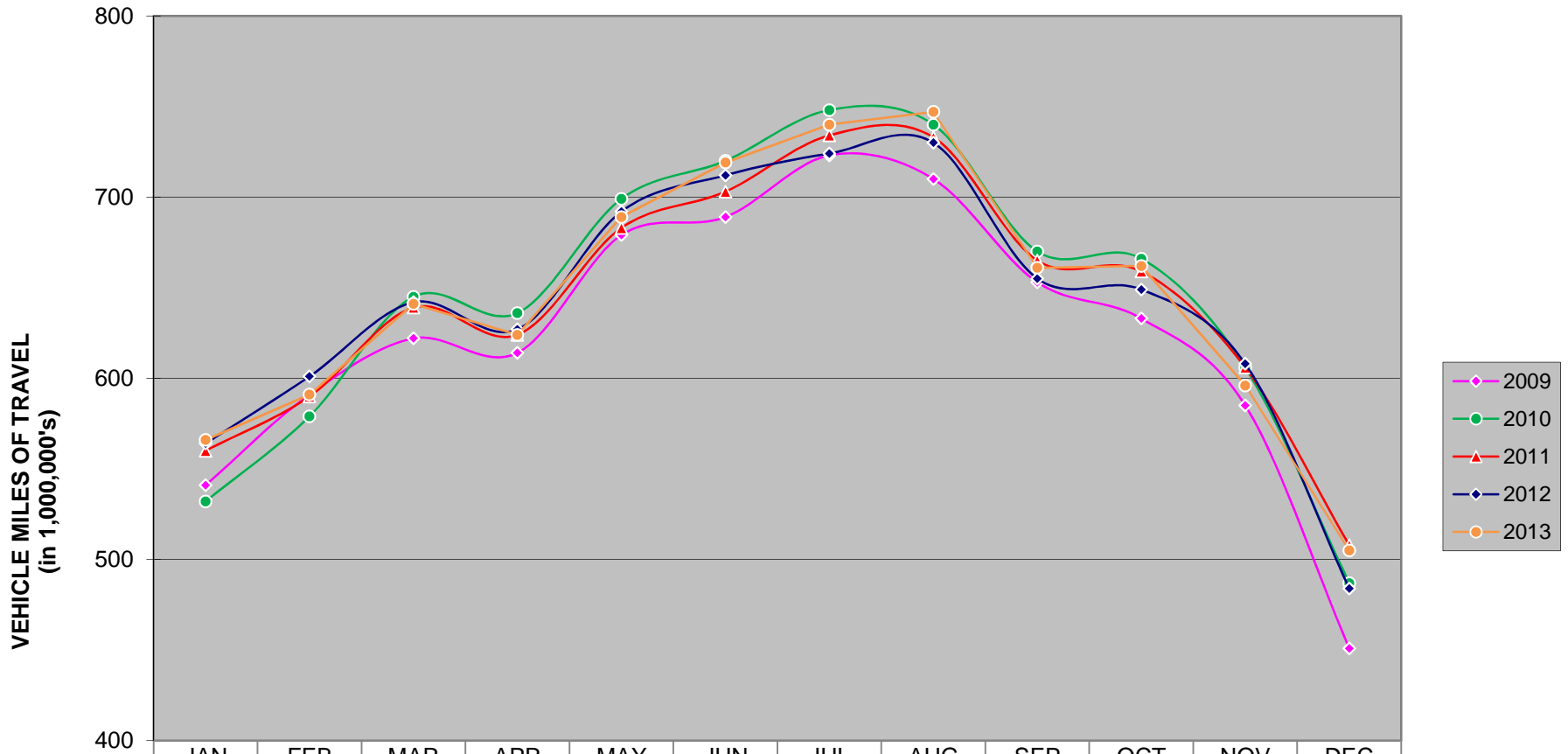
LOCATION AND STATION NUMBER		JAN. MADT	FEB. MADT	MARCH MADT	APRIL MADT	MAY MADT	JUNE MADT	JULY MADT	AUG. MADT	SEPT. MADT	OCT. MADT	NOV. MADT	DEC. MADT	ANNUAL AADT
GRANDVIEW AVE SOUTH OF PLYMOUTH CT	2013	7436	7806	7975	8647	9187	9090	8741	8740	8804	8659	8014	7829	8411
DUBUQUE	2012	7716	8085	8650	9191	9578	9619	9159	9069	9180	8980	8522	8240	8833
910-31	%	-3.63%	-3.45%	-7.80%	-5.92%	-4.08%	-5.50%	-4.56%	-3.63%	-4.10%	-3.57%	-5.96%	-4.99%	-4.78%
HUMBOLDT AVE SOUTH OF 4TH ST	2013	544	553	569	651	806	851	734	715	686	829	674	592	684
BODE	2012	607	598	664	694	777	753	746	756	NO DATA	845	681	586	NO AADT
911-46	%	-10.38%	-7.53%	-14.31%	-6.20%	3.73%	13.01%	-1.61%	-5.42%		-1.89%	-1.03%	1.02%	
ELM ST NORTH OF LUCAS ST	2013	3201	3309	3575	3746	3797	3849	3590	3647	3691	3518	3369	3312	3550
CRESTON	2012	3408	3535	3815	3953	4062	3994	3792	3792	3777	3751	3565	3373	3735
912-88	%	-6.07%	-6.39%	-6.29%	-5.24%	-6.52%	-3.63%	-5.33%	-3.82%	-2.28%	-6.21%	-5.50%	-1.81%	-4.95%
WASHINGTON ST EAST OF HARRISON ST	2013	NO DATA	NO DATA	NO DATA	NO DATA	NO DATA	NO DATA	NO DATA	NO DATA	NO DATA	NO DATA	NO DATA	NO DATA	NO DATA
MOUNT PLEASANT	2012	NO DATA	NO DATA	NO DATA	NO DATA	NO DATA	NO DATA	NO DATA	NO DATA	NO DATA	NO DATA	NO DATA	NO DATA	NO DATA
913-44	%													
TOTAL MUNICIPAL STREET	2013	86088	91867	91545	100148	94803	40500	48337	52056	60651	80291	56678	85186	
	2012	87567	93906	97622	101664	96569	41347	50461	54145	63083	85046	59515	89768	
	%	-1.69%	-2.17%	-6.23%	-1.49%	-1.83%	-2.05%	-4.21%	-3.86%	-3.86%	-5.59%	-4.77%	-5.10%	

NOTE: Numbers in red denote estimated traffic due to road construction, inaccurate, or insufficient data. Monthly data for sites without comparable data are not include in TOTAL.

DECEMBER HISTORICAL VMT



MONTHLY INTERSTATE TRAVEL

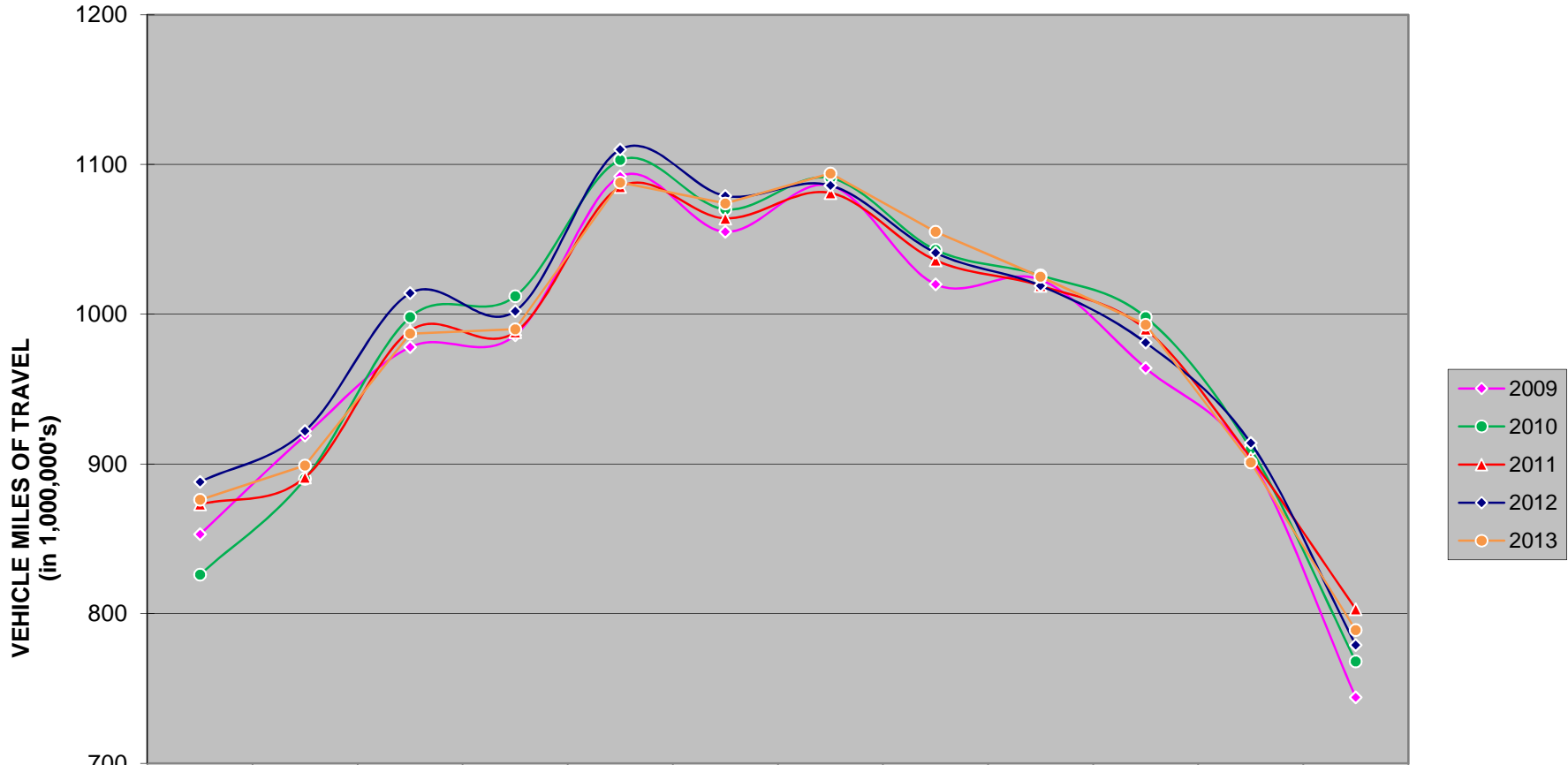


- ◆ 2009
- 2010
- ▲ 2011
- ◆ 2012
- 2013

	JAN	FEB	MAR	APR	MAY	JUN	JUL	AUG	SEP	OCT	NOV	DEC
◆ 2009	541	591	622	614	679	689	723	710	653	633	585	451
● 2010	532	579	645	636	699	720	748	740	670	666	606	487
▲ 2011	560	590	639	624	683	703	734	733	665	659	606	508
◆ 2012	564	601	642	627	692	712	724	730	655	649	608	484
● 2013	566	591	641	624	689	719	740	747	661	662	596	505

There are 1,055 miles of Interstate in Iowa as of December 31, 2012.

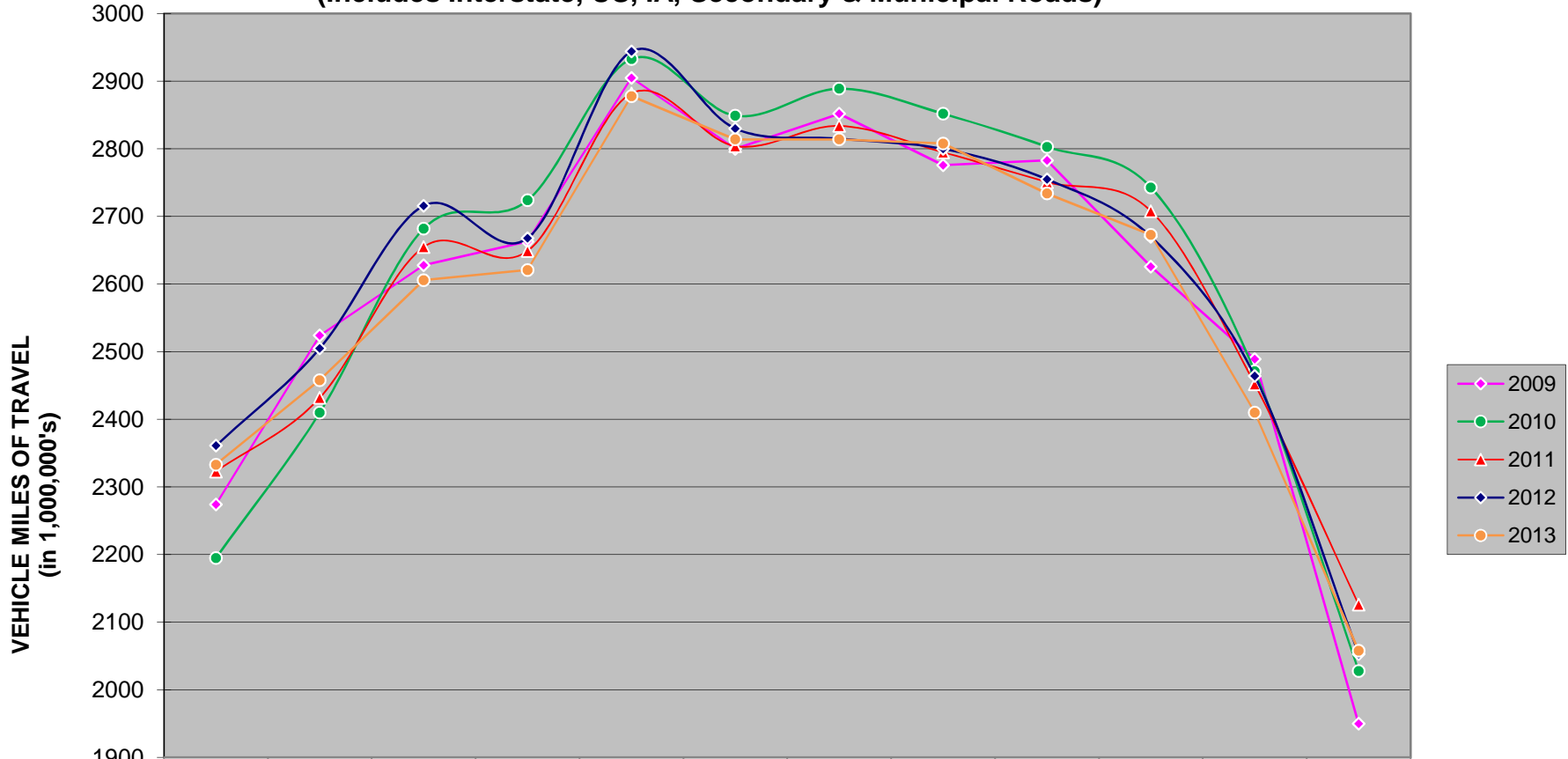
MONTHLY US & IA ROUTE VMT



	JAN	FEB	MAR	APR	MAY	JUN	JUL	AUG	SEP	OCT	NOV	DEC
2009	853	919	978	986	1092	1055	1086	1020	1023	964	903	744
2010	826	890	998	1012	1103	1070	1091	1043	1026	998	910	768
2011	873	891	989	988	1085	1064	1081	1036	1019	990	904	803
2012	888	922	1014	1002	1110	1079	1086	1041	1019	981	914	779
2013	876	899	987	990	1088	1074	1094	1055	1025	993	901	789

There are 9,420 miles of US and IA routes in Iowa as of December 31, 2012.

MONTHLY TOTAL STATE VMT
 (Includes Interstate, US, IA, Secondary & Municipal Roads)



	JAN	FEB	MAR	APR	MAY	JUN	JUL	AUG	SEP	OCT	NOV	DEC
◆ 2009	2274	2524	2628	2663	2905	2800	2852	2776	2783	2626	2489	1950
● 2010	2195	2410	2682	2724	2933	2849	2889	2852	2803	2743	2471	2028
▲ 2011	2323	2432	2655	2649	2882	2804	2834	2795	2751	2708	2452	2126
◆ 2012	2361	2505	2716	2668	2944	2830	2815	2800	2755	2670	2464	2053
● 2013	2333	2458	2606	2621	2878	2814	2814	2808	2734	2673	2410	2058