



**AUTOMATIC TRAFFIC RECORDER
MONTHLY REPORT
DECEMBER 2017**

PREPARED BY

OFFICE OF SYSTEMS PLANNING

IN COOPERATION WITH

UNITED STATES DEPARTMENT OF TRANSPORTATION

FEDERAL HIGHWAY ADMINISTRATION

TELEPHONE

515/239-1526

TABLE OF CONTENTS

Summary	3
Automatic Traffic Location Map	4
Monthly Traffic Variations 2017 vs 2016	5
Comparison of Estimated Vehicle Miles by System	6
Vehicle Miles of Travel	7
Individual Recorder Data	8 - 27
Monthly Interstate & Primary VMT	28
Monthly Interstate VMT	29
Monthly US & IA Route VMT	30
Monthly Total State VMT	31

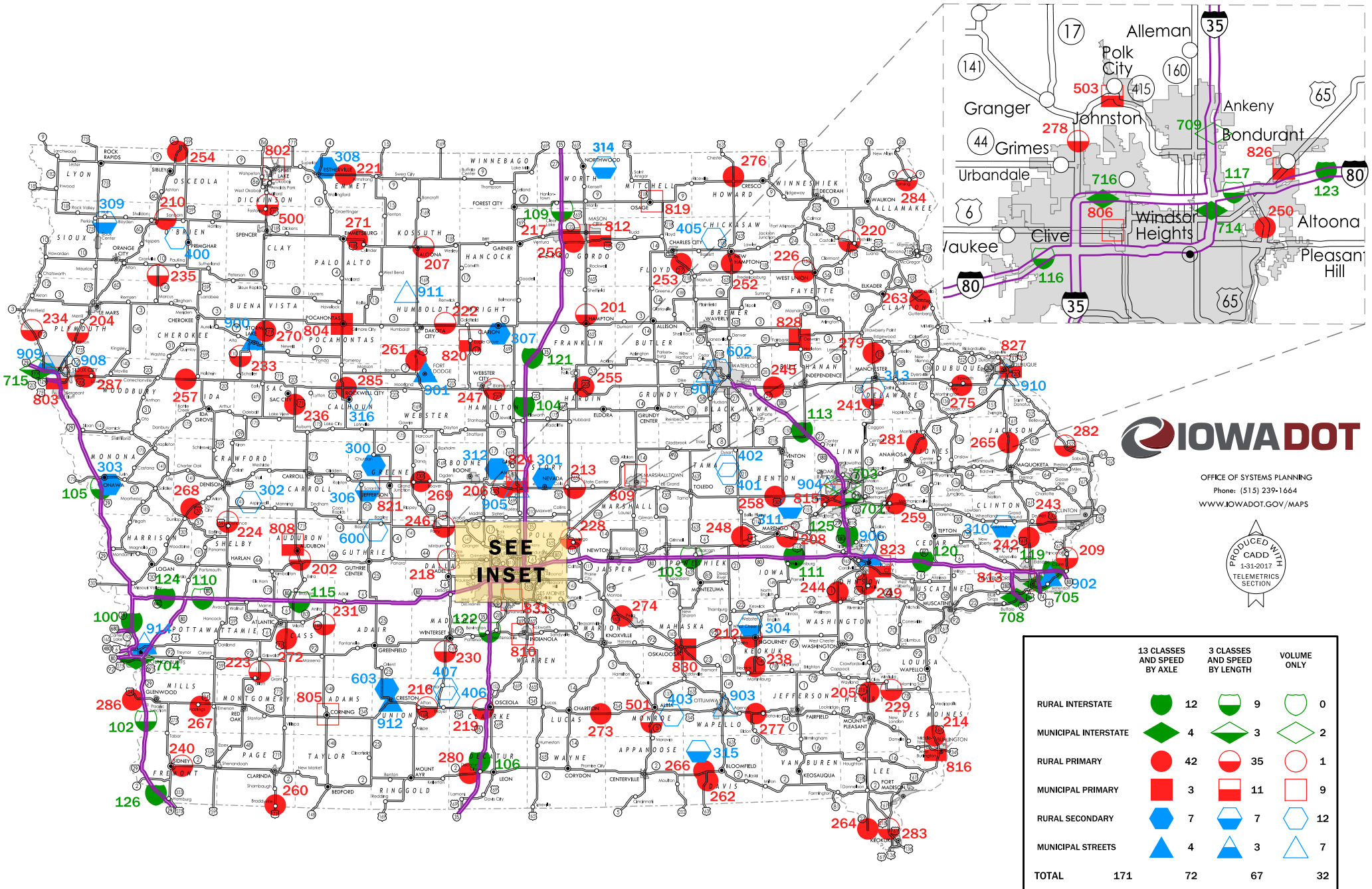
TRAFFIC VOLUME VARIATIONS ON THE IOWA ROAD SYSTEM

	<u>DECEMBER</u> 2017	COMPARED TO	<u>DECEMBER</u> 2016	<u>YEAR</u> <u>TO DATE</u> 2017 / 2016
<u>RURAL</u>				
INTERSTATE			4.3%	2.1%
PRIMARY			3.7%	1.1%
SECONDARY			4.7%	1.5%
SUBTOTAL			4.1%	1.5%
<u>MUNICIPAL</u>				
INTERSTATE			3.0%	2.7%
PRIMARY			3.5%	1.4%
STREETS			1.5%	0.9%
SUBTOTAL			2.3%	1.4%
STATE TOTAL			3.4%	1.5%

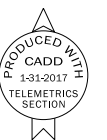
Data collected at the 171 continuous automatic traffic recorder locations shown on the following pages were utilized to compute the above percentages. The rural, municipal and state totals were weighted based on estimated vehicle miles of travel.

AUTOMATIC TRAFFIC RECORDER LOCATIONS

JANUARY 1, 2017

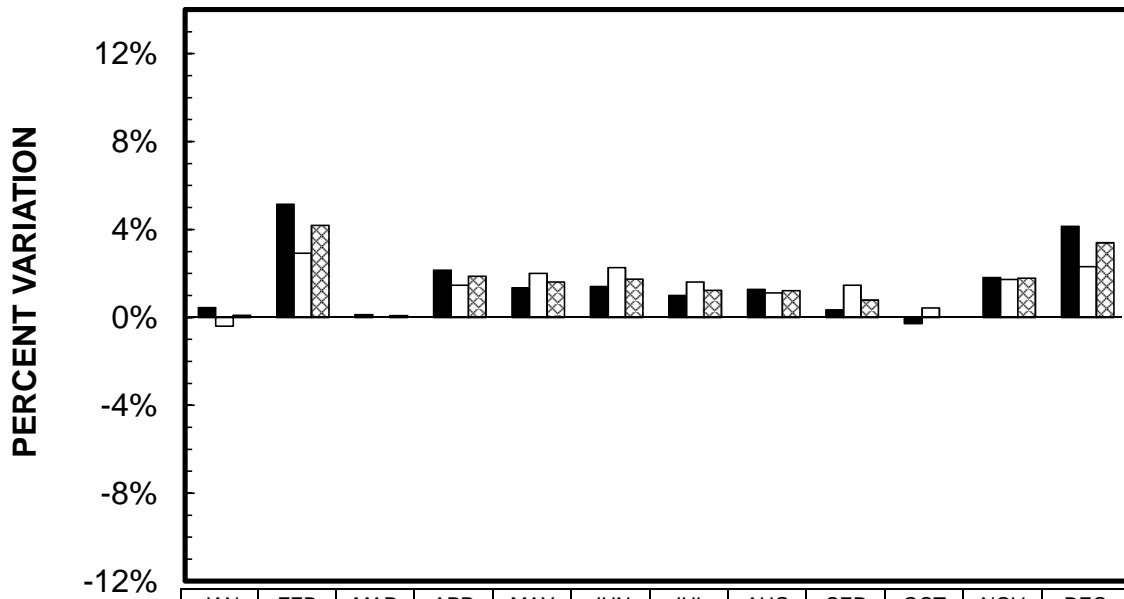


OFFICE OF SYSTEMS PLANNING
Phone: (515) 239-1664
WWW.IOWADOT.GOV/MAPS



MONTHLY TRAFFIC VARIATIONS

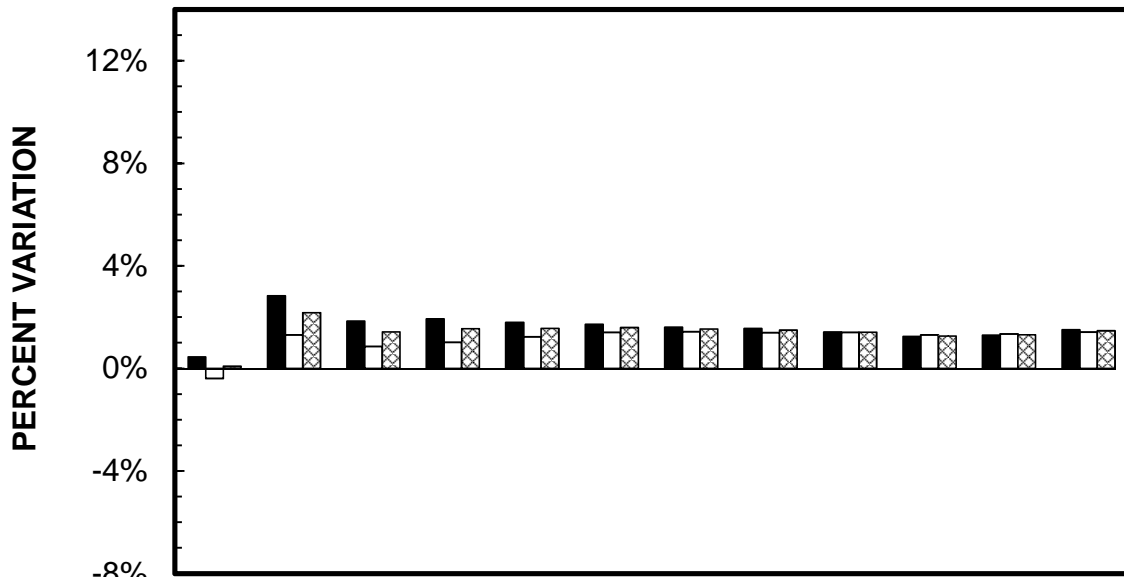
2017 vs 2016



	JAN	FEB	MAR	APR	MAY	JUN	JUL	AUG	SEP	OCT	NOV	DEC
■ RURAL	0.44%	5.14%	0.13%	2.15%	1.35%	1.41%	1.00%	1.27%	0.34%	-0.29%	1.82%	4.15%
□ MUNICIPAL	-0.40%	2.92%	0.00%	1.47%	2.00%	2.26%	1.61%	1.12%	1.47%	0.43%	1.73%	2.31%
▨ STATE TOTAL	0.08%	4.19%	0.07%	1.87%	1.60%	1.74%	1.23%	1.21%	0.79%	0.00%	1.78%	3.39%

CUMULATIVE MONTHLY TRAFFIC VARIATIONS

2017 vs 2016



	JAN	FEB	MAR	APR	MAY	JUN	JUL	AUG	SEP	OCT	NOV	DEC
■ RURAL	0.44%	2.83%	1.84%	1.92%	1.79%	1.72%	1.61%	1.56%	1.42%	1.24%	1.29%	1.50%
□ MUNICIPAL	-0.40%	1.30%	0.85%	1.02%	1.22%	1.40%	1.43%	1.39%	1.40%	1.30%	1.34%	1.41%
▨ STATE TOTAL	0.08%	2.17%	1.42%	1.55%	1.56%	1.59%	1.54%	1.49%	1.41%	1.26%	1.31%	1.47%

COMPARISON OF ESTIMATED VMT BY SYSTEM (IN 1,000,000's)

	JAN %dif	FEB %dif	MAR %dif	APR %dif	MAY %dif	JUN %dif	JUL %dif	AUG %dif	SEP %dif	OCT %dif	NOV %dif	DEC %dif	CUMULATIVE	%dif
RURAL INTERSTATE														
2017	371	400	450	466	504	538	537	539	491	471	462	415	5644	
2016	368 0.8%	380 5.3%	448 0.4%	449 3.8%	494 2.0%	526 2.3%	533 0.8%	527 2.3%	485 1.2%	465 1.3%	453 2.0%	398 4.3%	5526	2.1%
RURAL PRIMARY														
2017	624	680	712	757	785	807	791	802	786	771	744	693	8952	
2016	624 0.0%	648 4.9%	714 -0.3%	741 2.2%	781 0.5%	805 0.2%	787 0.5%	796 0.8%	780 0.8%	774 -0.4%	738 0.8%	668 3.7%	8856	1.1%
RURAL SECONDARY														
2017	369	392	437	487	516	525	496	493	494	503	473	423	5608	
2016	366 0.8%	372 5.4%	435 0.5%	484 0.6%	506 2.0%	513 2.3%	486 2.1%	488 1.0%	500 -1.2%	511 -1.6%	458 3.3%	404 4.7%	5523	1.5%
RURAL SUBTOTAL														
2017	1364	1472	1599	1710	1805	1870	1824	1834	1771	1745	1679	1531	20204	
2016	1358 0.4%	1400 5.1%	1597 0.1%	1674 2.2%	1781 1.3%	1844 1.4%	1806 1.0%	1811 1.3%	1765 0.3%	1750 -0.3%	1649 1.8%	1470 4.1%	19905	1.5%
MUNICIPAL INTERSTATE														
2017	196	209	217	223	227	236	227	236	232	229	222	208	2662	
2016	192 2.1%	200 4.5%	213 1.9%	220 1.4%	223 1.8%	229 3.1%	221 2.7%	229 3.1%	222 4.5%	224 2.2%	216 2.8%	202 3.0%	2591	2.7%
MUNICIPAL PRIMARY														
2017	268	290	295	314	331	336	328	328	318	316	305	296	3725	
2016	270 -0.7%	282 2.8%	295 0.0%	313 0.3%	326 1.5%	329 2.1%	319 2.8%	320 2.5%	315 1.0%	316 0.0%	301 1.3%	286 3.5%	3672	1.4%
MUNICIPAL STREETS														
2017	542	592	586	636	615	605	578	610	624	623	592	557	7160	
2016	548 -1.1%	578 2.4%	590 -0.7%	623 2.1%	601 2.3%	593 2.0%	575 0.5%	612 -0.3%	620 0.6%	623 0.0%	583 1.5%	549 1.5%	7095	0.9%
MUNICIPAL SUBTOTAL														
2017	1006	1091	1098	1173	1173	1177	1133	1174	1174	1168	1119	1061	13547	
2016	1010 -0.4%	1060 2.9%	1098 0.0%	1156 1.5%	1150 2.0%	1151 2.3%	1115 1.6%	1161 1.1%	1157 1.5%	1163 0.4%	1100 1.7%	1037 2.3%	13358	1.4%
STATE TOTAL														
2017	2370	2563	2697	2883	2978	3047	2957	3008	2945	2913	2798	2592	33751	
2016	2368 0.1%	2460 4.2%	2695 0.1%	2830 1.9%	2931 1.6%	2995 1.7%	2921 1.2%	2972 1.2%	2922 0.8%	2913 0.0%	2749 1.8%	2507 3.4%	33263	1.5%

IOWA DEPARTMENT OF TRANSPORTATION
ESTIMATED 2017 VEHICLE MILES OF TRAVEL
 (IN 1,000,000's)

MONTH	RURAL				MUNICIPAL				STATE TOTAL
	INTERSTATE	PRIMARY	SECONDARY	TOTAL	INTERSTATE	PRIMARY	SECONDARY	TOTAL	
JANUARY	371	624	369	1364	196	268	542	1006	2370
FEBRUARY	400	680	392	1472	209	290	592	1091	2563
MARCH	450	712	437	1599	217	295	586	1098	2697
APRIL	466	757	487	1710	223	314	636	1173	2883
MAY	504	785	516	1805	227	331	615	1173	2978
JUNE	538	807	525	1870	236	336	605	1177	3047
JULY	537	791	496	1824	227	328	578	1133	2957
AUGUST	539	802	493	1834	236	328	610	1174	3008
SEPTEMBER	491	786	494	1771	232	318	624	1174	2945
OCTOBER	471	771	503	1745	229	316	623	1168	2913
NOVEMBER	462	744	473	1679	222	305	592	1119	2798
DECEMBER	415	693	423	1531	208	296	557	1061	2592
SUBTOTAL	5644	8952	5608	20204	2662	3725	7160	13547	33751

**COMPARISON OF THE MONTHLY AVERAGE DAILY TRAFFIC (MADT) FOR 2017 AND 2016
AND ANNUAL AVERAGE DAILY TRAFFIC (AADT)**

RURAL INTERSTATE

LOCATION AND STATION NUMBER		JAN. MADT	FEB. MADT	MARCH MADT	APRIL MADT	MAY MADT	JUNE MADT	JULY MADT	AUG. MADT	SEPT. MADT	OCT. MADT	NOV. MADT	DEC. MADT	ANNUAL AADT
I 29 2.0 MI NORTH OF SOUTH JCT. I 680 HONEY CREEK 100-78	2017	17458	18950	21299	22146	NO DATA	NO DATA	NO DATA	NO DATA	23498	22950	22523	20467	NO AADT
	2016	17965	18484	21631	21663	24032	25397	25738	24535	23187	22981	21682	19816	22259
	%	-2.82%	2.52%	-1.53%	2.23%					1.34%	-0.13%	3.88%	3.29%	
I 29 7.0 MI SOUTH OF US 34 PACIFIC JUNCTION 102-65	2017	10414	11690	13449	13820	15566	16613	16686	16028	14929	14569	14155	12788	14226
	2016	10511	11180	13429	13175	15078	15911	16517	15162	14240	14251	13677	12224	13780
	%	-0.92%	4.56%	0.15%	4.90%	3.24%	4.41%	1.02%	5.71%	4.84%	2.23%	3.49%	4.61%	3.24%
I 80 1.0 MI WEST OF US 63 GRINNELL 103-79	2017	21513	22980	26480	27386	30635	33197	33512	33811	30641	29312	28745	24958	28598
	2016	21310	21914	26607	26395	29811	32247	33333	33456	30570	28953	28740	24095	28119
	%	0.95%	4.86%	-0.48%	3.75%	2.76%	2.95%	0.54%	1.06%	0.23%	1.24%	0.02%	3.58%	1.70%
I 35 3.0 MI NORTH OF IA 175 JEWELL 104-40	2017	18727	20510	23345	24040	25949	27053	27787	27530	25339	24840	24787	22194	24342
	2016	18511	19297	23636	23078	25477	26602	26634	26838	25231	24700	24334	21064	23783
	%	1.17%	6.29%	-1.23%	4.17%	1.85%	1.70%	4.33%	2.58%	0.43%	0.57%	1.86%	5.36%	2.35%
I 29 3.8 MI SOUTH OF IA 175 ONAWA 105-67	2017	10278	11757	13450	14009	16075	17387	17862	17424	15614	15057	14567	12848	14694
	2016	11028	11288	13585	13512	15707	16840	17786	16726	15320	14962	13861	11589	14350
	%	-6.80%	4.15%	-0.99%	3.68%	2.34%	3.25%	0.43%	4.17%	1.92%	0.63%	5.09%	10.86%	2.40%
I 35 0.6 MI NORTH OF IA 2 LEON 106-27	2017	11002	11708	14190	14072	15278	15921	16216	15384	14295	14551	14963	13366	14246
	2016	11371	11289	14395	13815	14954	15616	16387	15178	14350	14215	14734	13069	14115
	%	-3.25%	3.71%	-1.42%	1.86%	2.17%	1.95%	-1.04%	1.36%	-0.38%	2.36%	1.55%	2.27%	0.93%
I 35 3.0 MI NORTH OF CO RD B20 HANLONTOWN 109-17	2017	15885	17080	20163	20878	22637	24670	25396	24739	22614	21776	21169	19051	21338
	2016	15980	16362	20310	19864	22151	23987	24975	24370	22230	21487	20859	18498	20923
	%	-0.59%	4.39%	-0.72%	5.10%	2.19%	2.85%	1.69%	1.51%	1.73%	1.34%	1.49%	2.99%	1.98%
I 80 1.5 MI WEST OF CO RD M16 SHELBY 110-78	2017	19091	20448	23895	24812	27861	30826	31134	30953	27830	26262	25205	22560	25906
	2016	19343	19604	24078	24048	27311	30336	31009	30160	27615	25972	25048	21708	25519
	%	-1.30%	4.31%	-0.76%	3.18%	2.01%	1.62%	0.40%	2.63%	0.78%	1.12%	0.63%	3.92%	1.52%
I 80 2.0 MI EAST OF IA 149 WILLIAMSBURG 111-48	2017	25955	27626	31413	32550	36094	38750	38872	39681	35935	34753	34559	30191	33865
	2016	25820	26614	31742	31581	35244	37785	38627	39004	35874	34262	33980	29038	33298
	%	0.52%	3.80%	-1.04%	3.07%	2.41%	2.55%	0.63%	1.74%	0.17%	1.43%	1.70%	3.97%	1.70%
I 380 3.8 MI NORTH OF IA 150 BRANDON 113-06	2017	14265	15501	16783	17489	18362	19160	19445	19402	18688	18450	18218	16132	17658
	2016	14081	15695	17168	16950	18290	19207	19139	19102	18613	18608	18053	15330	17520
	%	1.31%	-1.24%	-2.24%	3.18%	0.39%	-0.24%	1.60%	1.57%	0.40%	-0.85%	0.91%	5.23%	0.79%
I 80 2.0 MI EAST OF US 71 ATLANTIC 115-15	2017	16129	17154	20596	21453	24492	27281	27630	27498	24289	22835	21892	19248	22541
	2016	16203	16508	20735	20587	23842	26923	27701	26970	24120	22450	21697	18375	22176
	%	-0.46%	3.91%	-0.67%	4.21%	2.73%	1.33%	-0.26%	1.96%	0.70%	1.71%	0.90%	4.75%	1.65%

**COMPARISON OF THE MONTHLY AVERAGE DAILY TRAFFIC (MADT) FOR 2017 AND 2016
AND ANNUAL AVERAGE DAILY TRAFFIC (AADT)**

RURAL INTERSTATE

LOCATION AND STATION NUMBER		JAN. MADT	FEB. MADT	MARCH MADT	APRIL MADT	MAY MADT	JUNE MADT	JULY MADT	AUG. MADT	SEPT. MADT	OCT. MADT	NOV. MADT	DEC. MADT	ANNUAL AADT
I 80 0.8 MI WEST OF JORDAN CREEK PARKWAY WAUKEE 116-25	2017	39502	42050	45800	48573	TRAFFIC VARIATIONS FOR SITE MOVED TO MUNICIPAL INTERSTATE GROUP AS OF MAY 1ST								48840
	2016	36811	37518	43004	44594	48670	51105	51481	52446	48933	48293	46016	42811	45973
	%	7.31%	12.08%	6.50%	8.92%									
I 80 1.8 MI EAST OF EAST JCT. I 35/80/235 ALTOONA 117-77	2017	NO DATA	75123	79657	83778	TRAFFIC VARIATIONS FOR SITE MOVED TO MUNICIPAL INTERSTATE GROUP AS OF MAY 1ST								NO AADT
	2016	67731	70409	77904	80628	85168	89346	87963	87898	78454	71876	69722	60948	77337
	%		6.70%	2.25%	3.91%									
I 80 1.5 MI EAST OF MIDDLE ROAD LECLAIRE 119-82	2017	NO DATA	NO DATA	NO DATA	NO DATA	NO DATA	NO DATA	NO DATA	NO DATA	NO DATA	NO DATA	NO DATA	NO DATA	NO AADT
	2016	26595	27184	32118	33504	35125	NO DATA	NO DATA	NO DATA	NO DATA	NO DATA	NO DATA	NO DATA	NO AADT
	%													
I 80 2.5 MI EAST OF CO RD X40 TIPTON 120-16	2017	28388	30110	33726	35014	38324	40894	41188	41481	38138	37493	36237	32150	36095
	2016	28445	29382	34325	34424	38305	NO DATA	41514	NO DATA	37320	36718	35902	30952	NO AADT
	%	-0.20%	2.48%	-1.75%	1.71%	0.05%		-0.79%		2.19%	2.11%	0.93%	3.87%	
I 35 2.0 MI NORTH OF CO RD R75 DOWS 121-99	2017	11965	12688	15079	15667	17261	18429	19114	18374	17006	16286	15914	14159	15995
	2016	11877	12139	15365	14961	16792	17985	18756	18580	16756	16011	15675	13868	15730
	%	0.74%	4.52%	-1.86%	4.72%	2.79%	2.47%	1.91%	-1.11%	1.49%	1.72%	1.52%	2.10%	1.68%
I 35 1.0 MI NORTH OF IA 92 CUMMING 122-92	2017	18807	19504	21926	22260	23578	24276	24502	24622	22628	23278	23493	22055	22577
	2016	18603	18797	22366	21983	23099	23689	24108	23378	22052	22364	22270	20981	21974
	%	1.10%	3.76%	-1.97%	1.26%	2.07%	2.48%	1.63%	5.32%	2.61%	4.09%	5.49%	5.12%	2.74%
I 80 4.8 MI EAST OF EAST JCT. US 65 MITCHELLVILLE 123-77	2017	NO DATA	NO DATA	NO DATA	NO DATA	NO DATA	NO DATA	NO DATA	NO DATA	NO DATA	NO DATA	NO DATA	NO DATA	NO AADT
	2016	NO DATA	NO DATA	NO DATA	NO DATA	NO DATA	NO DATA	NO DATA	NO DATA	NO DATA	NO DATA	NO DATA	NO DATA	NO AADT
	%													
I 680 6.4 MI WEST OF I 80 BEEBETOWN 124-78	2017	NO DATA	NO DATA	NO DATA	NO DATA	NO DATA	NO DATA	NO DATA	NO DATA	NO DATA	NO DATA	NO DATA	NO DATA	NO AADT
	2016	4805	4948	6092	6009	6771	7324	7133	7270	NO DATA	NO DATA	NO DATA	NO DATA	NO AADT
	%													
I 380 6.0 MI NORTH OF I 80 NORTH LIBERTY 125-52	2017	48767	52830	54726	56547	TRAFFIC VARIATIONS FOR SITE MOVED TO MUNICIPAL INTERSTATE GROUP AS OF MAY 1ST								56073
	2016	47639	49824	53839	55207	56105	58066	57265	58891	NO DATA	NO DATA	55524	49866	NO AADT
	%	2.37%	6.03%	1.65%	2.43%									
I 29 9.0 MI SOUTH OF IA 2 HAMBURG 126-36	2017	10298	11561	13611	14084	16288	17699	17018	16544	15015	14493	14518	12958	14507
	2016	NO DATA	NO DATA	NO DATA	NO DATA	NO DATA	NO DATA	NO DATA	NO DATA	NO DATA	14522	14145	12310	NO AADT
	%										-0.20%	2.64%	5.26%	
TOTAL RURAL INTERSTATE	2017	328146	427709	475977	494494	312112	293563	339344	295446	331444	336905	330945	295125	
	2016	325498	406304	474119	476465	306061	287128	336486	288924	327478	332456	324657	282917	
	%	0.81%	5.27%	0.39%	3.78%	1.98%	2.24%	0.85%	2.26%	1.21%	1.34%	1.94%	4.32%	

NOTE: Numbers in red denote estimated traffic due to road construction, inaccurate, or insufficient data. Monthly data for sites without comparable data are not include in TOTAL.

**COMPARISON OF THE MONTHLY AVERAGE DAILY TRAFFIC (MADT) FOR 2017 AND 2016
AND ANNUAL AVERAGE DAILY TRAFFIC (AADT)**

RURAL PRIMARY

LOCATION AND STATION NUMBER		JAN. MADT	FEB. MADT	MARCH MADT	APRIL MADT	MAY MADT	JUNE MADT	JULY MADT	AUG. MADT	SEPT. MADT	OCT. MADT	NOV. MADT	DEC. MADT	ANNUAL AADT
US 65 2.7 MI NORTH OF IA 3 HAMPTON 201-35	2017	2453	2690	2850	3094	3294	3357	3235	3197	3175	3056	2966	2736	3009
	2016	2589	2616	2852	2998	3099	3129	3011	3087	3066	3108	3003	2691	2937
	%	-5.25%	2.83%	-0.07%	3.20%	6.29%	7.29%	7.44%	3.56%	3.56%	-1.67%	-1.23%	1.67%	2.45%
US 71 2.0 MI NORTH OF IA 44 HAMLIN 202-05	2017	2688	2971	3171	3440	3602	3792	3686	3599	3471	3430	3354	3148	3363
	2016	NO DATA	NO DATA	NO DATA	NO DATA	NO DATA	NO DATA	NO DATA	NO DATA	NO DATA	3442	3329	2997	NO AADT
	%										-0.35%	0.75%	5.04%	
US 75 3.1 MI NORTH OF CO RD C60 HINTON 204-75	2017	12112	13349	14349	14894	15196	15490	15458	15192	14495	14265	14149	13592	14378
	2016	12338	12595	13782	14486	15081	15517	15863	15362	14882	14666	14238	13422	14353
	%	-1.83%	5.99%	4.11%	2.82%	0.76%	-0.17%	-2.55%	-1.11%	-2.60%	-2.73%	-0.63%	1.27%	0.17%
US 218 1.7 MI SOUTH OF IA 78 SWEDESBUURG 205-44	2017	11031	12016	13243	13475	14042	14566	14212	14263	14301	13932	13550	12692	13444
	2016	10848	11538	13163	13109	13771	14395	14208	14148	14065	13620	13468	12159	13208
	%	1.69%	4.14%	0.61%	2.79%	1.97%	1.19%	0.03%	0.81%	1.68%	2.29%	0.61%	4.38%	1.79%
US 30 AT BOONE/STORY CO LINE NAPIER 206-85	2017	12886	14666	14694	NO DATA	NO DATA	15527	15183	15763	16743	15670	14874	14096	15010
	2016	13482	13983	14974	15936	15961	16468	15863	16604	17396	16845	15653	13294	15538
	%	-4.42%	4.88%	-1.87%			-5.71%	-4.29%	-5.07%	-3.75%	-6.98%	-4.98%	6.03%	-3.40%
US 18 2.2 MI EAST OF US 169 ALGONA 207-55	2017	2873	2880	3023	3331	3586	3853	3622	3510	3663	3379	3324	3033	3340
	2016	2927	2882	3111	3375	3602	3777	3750	3673	3659	3387	3302	3019	3372
	%	-1.84%	-0.07%	-2.83%	-1.30%	-0.44%	2.01%	-3.41%	-4.44%	0.11%	-0.24%	0.67%	0.46%	-0.95%
US 6 3.0 MI EAST OF CO V66 MARENGO 208-48	2017	2940	3154	3340	3508	3657	3742	3801	3683	3590	3583	3360	3097	3455
	2016	2930	3074	3377	3521	3692	3744	3757	3649	3513	3568	3380	3083	3441
	%	0.34%	2.60%	-1.10%	-0.37%	-0.95%	-0.05%	1.17%	0.93%	2.19%	0.42%	-0.59%	0.45%	0.41%
US 67 1.5 MI SOUTH OF CO RD F45 PRINCETON 209-82	2017	3439	3764	3854	4141	4377	4550	4497	4432	4389	4261	3824	3575	4092
	2016	3429	3724	3883	4311	4490	4697	4552	4592	4503	4428	3957	3508	4173
	%	0.29%	1.07%	-0.75%	-3.94%	-2.52%	-3.13%	-1.21%	-3.48%	-2.53%	-3.77%	-3.36%	1.91%	-1.94%
US 18 2.4 MI EAST OF IA 60 SHELDON 210-71	2017	3677	3946	4080	4322	4349	4743	4425	NO DATA	NO DATA	NO DATA	NO DATA	3726	NO AADT
	2016	3755	3706	3941	4322	4549	5001	4683	4862	5059	4510	4110	3877	4365
	%	-2.08%	6.48%	3.53%	0.00%	-4.40%	-5.16%	-5.51%					-3.89%	

**COMPARISON OF THE MONTHLY AVERAGE DAILY TRAFFIC (MADT) FOR 2017 AND 2016
AND ANNUAL AVERAGE DAILY TRAFFIC (AADT)**

RURAL PRIMARY

LOCATION AND STATION NUMBER		JAN. MADT	FEB. MADT	MARCH MADT	APRIL MADT	MAY MADT	JUNE MADT	JULY MADT	AUG. MADT	SEPT. MADT	OCT. MADT	NOV. MADT	DEC. MADT	ANNUAL AADT
IA 92 0.6 MI WEST OF CO RD V45 SIGOURNEY 212-54	2017	2164	2340	2535	2654	2858	2756	2678	2761	2638	NO DATA	2481	2312	NO AADT
	2016	2209	2334	2509	2635	2841	2832	NO DATA	2741	2677	2763	2551	2288	NO AADT
	%	-2.04%	0.26%	1.04%	0.72%	0.60%	-2.68%		0.73%	-1.46%		-2.74%	1.05%	
US 30 1.8 MI EAST OF US 65 COLO 213-85	2017	5943	6421	6628	7150	7402	7529	7227	7408	7737	7318	6948	6281	6999
	2016	5737	5970	6627	6961	7219	7432	7045	7540	7618	7397	7070	6079	6891
	%	3.59%	7.55%	0.02%	2.72%	2.53%	1.31%	2.58%	-1.75%	1.56%	-1.07%	-1.73%	3.32%	1.57%
US 61 3.8 MI NORTH OF US 34 BURLINGTON 214-29	2017	5960	6415	6622	6932	7138	7417	7129	6978	6931	6984	6689	6458	6804
	2016	6132	6500	6790	7138	7497	7583	7527	7408	7134	7034	6733	6245	6977
	%	-2.80%	-1.31%	-2.47%	-2.89%	-4.79%	-2.19%	-5.29%	-5.80%	-2.85%	-0.71%	-0.65%	3.41%	-2.48%
US 34/169 2.5 MI EAST OF WEST JCT US 169 AFTON 216-88	2017	3189	3466	3510	3758	3943	3969	3721	3777	3777	3764	3613	3395	3657
	2016	3250	3389	3587	3808	3934	4013	3737	3786	3846	3887	3640	3374	3688
	%	-1.88%	2.27%	-2.15%	-1.31%	0.23%	-1.10%	-0.43%	-0.24%	-1.79%	-3.16%	-0.74%	0.62%	-0.84%
IA 122 2.5 MI EAST OF I 35 CLEAR LAKE 217-17	2017	12645	13289	13602	14542	14956	15538	15499	14740	14106	13987	13798	13574	14190
	2016	12655	12944	13431	14253	14942	15306	NO DATA	NO DATA	NO DATA	NO DATA	13582	13721	NO AADT
	%	-0.08%	2.67%	1.27%	2.03%	0.09%	1.52%					1.59%	-1.07%	
IA 44 0.2 MI WEST OF US 169 ADEL 218-25	2017	3019	3259	3439	3831	4267	4472	4572	4389	4195	4037	3765	3473	3893
	2016	3033	3068	3482	3749	4099	4452	4432	4244	4003	3903	3634	3271	3781
	%	-0.46%	6.23%	-1.23%	2.19%	4.10%	0.45%	3.16%	3.42%	4.80%	3.43%	3.60%	6.18%	2.96%
US 34 1.0 MI WEST OF I 35 OSCEOLA 219-20	2017	4142	4449	4516	4765	4983	5011	4858	4902	4872	4802	4669	4427	4700
	2016	4094	4307	4546	4757	4988	5089	4865	4813	4903	4810	4657	4355	4682
	%	1.17%	3.30%	-0.66%	0.17%	-0.10%	-1.53%	-0.14%	1.85%	-0.63%	-0.17%	0.26%	1.65%	0.38%
US 52 1.0 MI NORTH OF US 18 POSTVILLE 220-03	2017	1233	1372	1441	1616	1749	1750	1665	1695	1679	1629	1550	1357	1561
	2016	NO DATA	NO DATA	NO DATA	NO DATA	NO DATA	NO DATA	1712	1755	1662	1721	1582	1277	NO AADT
	%							-2.75%	-3.42%	1.02%	-5.35%	-2.02%	6.26%	
IA 9 2.5 MI WEST OF CO RD N52 ARMSTRONG 221-32	2017	1300	1395	1486	1703	1782	1815	1863	1837	1818	1701	1639	1395	1645
	2016	1376	1307	1516	1664	1791	1845	1892	1739	1734	1666	1493	1344	1614
	%	-5.52%	6.73%	-1.98%	2.34%	-0.50%	-1.63%	-1.53%	5.64%	4.84%	2.10%	9.78%	3.79%	1.92%
IA 3 0.3 MI WEST OF CO RD P66 HUMBOLDT 222-46	2017	1671	1769	1863	2021	2163	2282	2178	2143	2057	2050	2045	1890	2011
	2016	NO DATA	NO DATA	NO DATA	NO DATA	NO DATA	NO DATA	2090	2100	2130	2179	2049	1799	NO AADT
	%							4.21%	2.05%	-3.43%	-5.92%	-0.20%	5.06%	

**COMPARISON OF THE MONTHLY AVERAGE DAILY TRAFFIC (MADT) FOR 2017 AND 2016
AND ANNUAL AVERAGE DAILY TRAFFIC (AADT)**

RURAL PRIMARY

LOCATION AND STATION NUMBER		JAN. MADT	FEB. MADT	MARCH MADT	APRIL MADT	MAY MADT	JUNE MADT	JULY MADT	AUG. MADT	SEPT. MADT	OCT. MADT	NOV. MADT	DEC. MADT	ANNUAL AADT
IA 48 4.0 MI SOUTH OF IA 92	2017	1061	1114	1248	1301	1376	1339	1195	1239	1268	1288	1271	1183	1240
GRISWOLD	2016	1053	1075	1233	1248	1325	1308	1168	1189	1228	1344	1244	1167	1215
223-15	%	0.76%	3.63%	1.22%	4.25%	3.85%	2.37%	2.31%	4.21%	3.26%	-4.17%	2.17%	1.37%	2.06%
US 59 0.5 MI SOUTH OF CO RD F16	2017	2322	2508	2658	2824	3026	3068	2932	2983	2897	2797	2833	2610	2788
DEFIANCE	2016	2324	2325	2722	2755	3004	3159	3162	3096	3072	2934	2766	2516	2820
224-83	%	-0.09%	7.87%	-2.35%	2.50%	0.73%	-2.88%	-7.27%	-3.65%	-5.70%	-4.67%	2.42%	3.74%	-1.13%
US 18 3.8 MI EAST OF CO RD W14	2017	1974	2130	2246	2542	2705	2848	2666	2601	2613	2628	2431	2249	2470
WEST UNION	2016	2054	2053	2321	2569	2754	2843	NO DATA	NO DATA	NO DATA	NO DATA	2282	2116	NO AADT
226-33	%	-3.89%	3.75%	-3.23%	-1.05%	-1.78%	0.18%					6.53%	6.29%	
IA 117 2.5 MI SOUTH OF US 65	2017	793	869	938	1057	1113	1157	1051	1106	1086	1027	959	842	1000
MINGO	2016	763	776	904	1002	1084	1170	1100	NO DATA	NO DATA	1121	NO DATA	858	NO AADT
228-50	%	3.93%	11.98%	3.76%	5.49%	2.68%	-1.11%	-4.45%			-8.39%		-1.86%	
IA 78 1.2 MI WEST OF CO RD X23	2017	715	747	778	845	885	891	749	779	824	833	760	734	795
WINFIELD	2016	711	726	762	872	879	889	803	804	830	855	783	707	802
229-44	%	0.56%	2.89%	2.10%	-3.10%	0.68%	0.22%	-6.72%	-3.11%	-0.72%	-2.57%	-2.94%	3.82%	-0.87%
US 169 3.5 MI SOUTH OF SOUTH JCT IA 92	2017	1453	1588	1649	1813	1991	1979	1863	1772	1818	1823	1784	1685	1768
WINTERSET	2016	1447	1485	1674	1782	1895	1880	1860	1874	1874	1905	1786	1586	1754
230-61	%	0.41%	6.94%	-1.49%	1.74%	5.07%	5.27%	0.16%	-5.44%	-2.99%	-4.30%	-0.11%	6.24%	0.80%
IA 148 9.3 MI NORTH OF IA 92	2017	737	771	853	926	994	939	877	932	957	932	921	835	889
ANITA	2016	729	715	827	875	977	995	915	940	963	964	888	804	883
231-15	%	1.10%	7.83%	3.14%	5.83%	1.74%	-5.63%	-4.15%	-0.85%	-0.62%	-3.32%	3.72%	3.86%	0.68%
IA 110 1.5 MI SOUTH OF CO RD C65	2017	1140	1202	1188	NO DATA	NO DATA	NO DATA	NO DATA	NO DATA	NO DATA	1370	NO DATA	NO DATA	NO AADT
SCHALLER	2016	1201	1166	1255	1319	1377	1439	1446	1479	1478	1409	1211	1196	1331
233-11	%	-5.08%	3.09%	-5.34%							-2.77%			
IA 12 2.5 MI NORTH OF CO RD K18	2017	1040	1149	1230	1346	1423	1492	1388	1387	1367	1327	1221	1175	1295
AKRON	2016	1080	1117	1222	1316	1392	1465	1405	1413	1371	1403	1305	1185	1306
234-75	%	-3.70%	2.86%	0.65%	2.28%	2.23%	1.84%	-1.21%	-1.84%	-0.29%	-5.42%	-6.44%	-0.84%	-0.84%
IA 143 3.4 MI SOUTH OF IA 10	2017	840	944	993	1030	1099	1106	1056	1092	1117	1139	1163	983	1047
MARCUS	2016	915	903	994	1060	1118	NO DATA	NO DATA	NO DATA	1127	1125	1091	917	NO AADT
235-71	%	-8.20%	4.54%	-0.10%	-2.83%	-1.70%				-0.89%	1.24%	6.60%	7.20%	

**COMPARISON OF THE MONTHLY AVERAGE DAILY TRAFFIC (MADT) FOR 2017 AND 2016
AND ANNUAL AVERAGE DAILY TRAFFIC (AADT)**

RURAL PRIMARY

LOCATION AND STATION NUMBER		JAN. MADT	FEB. MADT	MARCH MADT	APRIL MADT	MAY MADT	JUNE MADT	JULY MADT	AUG. MADT	SEPT. MADT	OCT. MADT	NOV. MADT	DEC. MADT	ANNUAL AADT
US 71 5.3 MI SOUTH OF US 20	2017	1211	1357	1461	1686	1737	1848	1885	1836	1829	1750	1710	1531	1653
SAC CITY	2016	NO DATA	NO DATA	NO DATA	NO DATA	NO DATA	1514	1615	1513	1578	1656	1592	1408	NO AADT
236-81	%						22.06%	16.72%	21.35%	15.91%	5.68%	7.41%	8.74%	
IA 149 2.1 MI NORTH OF IA 78	2017	1077	1169	1232	1286	1314	1261	1213	1231	1255	1259	1249	1128	1223
MARTINSBURG	2016	1083	1123	1219	1314	1300	1279	1285	1280	1279	1291	1222	1138	1234
238-54	%	-0.55%	4.10%	1.07%	-2.13%	1.08%	-1.41%	-5.60%	-3.83%	-1.88%	-2.48%	2.21%	-0.88%	-0.89%
IA 2 3.0 MI EAST OF US 275	2017	1686	1898	1978	2065	2153	2189	2066	2205	2088	2089	2032	2027	2040
SIDNEY	2016	1771	1837	1978	1986	2136	2118	1972	2089	2058	2070	1907	1817	1978
240-36	%	-4.80%	3.32%	0.00%	3.98%	0.80%	3.35%	4.77%	5.55%	1.46%	0.92%	6.55%	11.56%	3.13%
IA 13 6.3 MI SOUTH OF US 20	2017	3642	3953	4064	4487	4928	5038	5081	4906	4867	4852	4453	4174	4537
RYAN	2016	3680	3743	4184	4339	4842	5089	4826	4726	4722	4876	4417	3929	4448
241-28	%	-1.03%	5.61%	-2.87%	3.41%	1.78%	-1.00%	5.28%	3.81%	3.07%	-0.49%	0.82%	6.24%	2.00%
US 61 3.8 MI NORTH OF CO RD F41	2017	15719	16856	17577	18481	19004	19728	19286	19516	19160	18977	18191	16921	18285
ELDRIDGE	2016	15430	16141	17157	17824	18400	19276	18754	18757	18714	18856	17927	16455	17808
242-82	%	1.87%	4.43%	2.45%	3.69%	3.28%	2.34%	2.84%	4.05%	2.38%	0.64%	1.47%	2.83%	2.68%
US 30 0.3 MI EAST OF CO RD Z24	2017	8922	9562	9808	10284	10431	10841	10380	10579	10485	10478	10146	9695	10134
DEWITT	2016	8626	9112	9590	10018	10190	10527	10084	10182	10217	10325	10104	9451	9869
243-23	%	3.43%	4.94%	2.27%	2.66%	2.37%	2.98%	2.94%	3.90%	2.62%	1.48%	0.42%	2.58%	2.69%
IA 1 0.8 MI SOUTH OF CO RD F67	2017	5196	5554	5823	6209	6191	6154	5662	5741	5774	5597	5409	5307	5718
KALONA	2016	5015	5225	5627	6021	6257	6159	5929	5901	6040	5970	5756	5377	5773
244-52	%	3.61%	6.30%	3.48%	3.12%	-1.05%	-0.08%	-4.50%	-2.71%	-4.40%	-6.25%	-6.03%	-1.30%	-0.95%
US 20 1.5 MI EAST OF CO RD V62	2017	9033	9886	10409	11228	11324	11736	11927	12042	11814	11583	11087	10207	11023
JESUP	2016	9338	9667	10636	10900	11534	11955	11444	NO DATA	NO DATA	NO DATA	10649	9723	NO AADT
245-07	%	-3.27%	2.27%	-2.13%	3.01%	-1.82%	-1.83%	4.22%				4.11%	4.98%	
IA 141 1.0 MI EAST OF WILLIS AVE	2017	8923	9674	9715	10676	11511	11416	10933	11427	11147	11016	10697	9901	10586
PERRY	2016	8834	9117	9865	10209	10489	10535	10109	10499	10196	10333	10224	9540	9996
246-25	%	1.01%	6.11%	-1.52%	4.57%	9.74%	8.36%	8.15%	8.84%	9.33%	6.61%	4.63%	3.78%	5.90%
US 20 3.0 MI EAST OF EAST JCT IA 17	2017	7428	8192	8954	9451	10061	10358	10503	10485	10138	9915	9734	8956	9515
WEBSTER CITY	2016	7719	7702	9132	9220	9908	10211	10143	10075	9924	9905	9784	8176	9325
247-40	%	-3.77%	6.36%	-1.95%	2.51%	1.54%	1.44%	3.55%	4.07%	2.16%	0.10%	-0.51%	9.54%	2.04%

**COMPARISON OF THE MONTHLY AVERAGE DAILY TRAFFIC (MADT) FOR 2017 AND 2016
AND ANNUAL AVERAGE DAILY TRAFFIC (AADT)**

RURAL PRIMARY

LOCATION AND STATION NUMBER		JAN. MADT	FEB. MADT	MARCH MADT	APRIL MADT	MAY MADT	JUNE MADT	JULY MADT	AUG. MADT	SEPT. MADT	OCT. MADT	NOV. MADT	DEC. MADT	ANNUAL AADT
IA 21 2.8 MI NORTH OF US 6 BELLE PLAINE 248-48	2017	981	1085	1119	1229	1226	1315	1265	1279	1236	1214	1183	1094	1185
	2016	1006	1029	1146	1233	1336	1313	1274	1346	1297	1302	1199	1054	1211
	%	-2.49%	5.44%	-2.36%	-0.32%	-8.23%	0.15%	-0.71%	-4.98%	-4.70%	-6.76%	-1.33%	3.80%	-2.15%
US 218 3.5 MI SOUTH OF IA 921 HILLS 249-52	2017	18476	19777	20868	21361	20794	22082	21813	22125	22034	21909	21542	20452	21103
	2016	18086	19386	21228	21354	21748	22451	22091	22251	21734	21958	21278	19783	21112
	%	2.16%	2.02%	-1.70%	0.03%	-4.39%	-1.64%	-1.26%	-0.57%	1.38%	-0.22%	1.24%	3.38%	-0.04%
US 65 2.1 MI NORTH OF IA 163 PLEASANT HILL 250-77	2017	24555	27084	27764	30159	TRAFFIC VARIATIONS FOR SITE MOVED TO MUNICIPAL PRIMARY GROUP AS OF MAY 1ST								29994
	2016	23951	25291	26876	28652	30001	31147	29740	32900	29583	29802	28631	26602	28598
	%	2.52%	7.09%	3.30%	5.26%									4.88%
US 18/63 0.5 MI SOUTH OF CO RD B54 NEW HAMPTON 252-19	2017	4780	5346	5636	5908	6127	6399	6211	6246	6212	6158	5831	5466	5860
	2016	4837	4998	5613	5800	6125	6371	6228	6111	5946	6053	5771	5131	5749
	%	-1.18%	6.96%	0.41%	1.86%	0.03%	0.44%	-0.27%	2.21%	4.47%	1.73%	1.04%	6.53%	1.93%
US 218 3.5 MI SOUTH OF CO RD T64 CHARLES CITY 253-34	2017	7650	8317	9278	9822	10469	11164	11213	11015	10583	10315	9989	9086	9908
	2016	7667	7921	9320	9319	10387	10918	11063	10763	10555	10021	9712	8488	9678
	%	-0.22%	5.00%	-0.45%	5.40%	0.79%	2.25%	1.36%	2.34%	0.27%	2.93%	2.85%	7.05%	2.38%
IA 60 2.5 MI NORTH OF IA 9 SIBLEY 254-72	2017	3183	3454	3846	3964	4317	4447	NO DATA	4487	4219	4088	4055	3752	NO AADT
	2016	3098	3140	3731	3722	NO DATA	NO DATA	4532	4367	4159	4022	3836	3556	NO AADT
	%	2.74%	10.00%	3.08%	6.50%				2.75%	1.44%	1.64%	5.71%	5.51%	
US 20 1.0 MI EAST OF US 65 IOWA FALLS 255-42	2017	7248	8078	8829	8929	9703	9934	10100	10298	9670	9634	9911	8584	9243
	2016	7372	7767	9147	9031	9854	9979	9892	9982	9952	9881	9640	8097	9216
	%	-1.68%	4.00%	-3.48%	-1.13%	-1.53%	-0.45%	2.10%	3.17%	-2.83%	-2.50%	2.81%	6.01%	0.29%
US 18 3.3 MI EAST OF I 35 MASON CITY 256-17	2017	6742	7294	8206	8884	9361	10232	10588	10175	9466	9102	8869	7939	8905
	2016	6541	6677	8083	8265	9204	10050	10822	NO DATA	NO DATA	NO DATA	9031	7527	NO AADT
	%	3.07%	9.24%	1.52%	7.49%	1.71%	1.81%	-2.16%				-1.79%	5.47%	
US 20 3.6 MI WEST OF WEST JCT US 59 HOLSTEIN 257-47	2017	NO DATA	NO DATA	NO DATA	NO DATA	NO DATA	NO DATA	NO DATA	NO DATA	NO DATA	NO DATA	NO DATA	NO DATA	NO AADT
	2016	3108	3099	3401	NO DATA	NO DATA	NO DATA	NO DATA	NO DATA	NO DATA	NO DATA	NO DATA	NO DATA	NO AADT
	%													
US 30 0.6 MI EAST OF CO RD V66 BLAIRSTOWN 258-06	2017	6758	7381	7592	8050	8443	8667	8415	8624	8466	8212	7939	7370	7993
	2016	6650	6815	7548	7694	8112	8398	8358	8483	8380	8160	7877	6992	7789
	%	1.62%	8.31%	0.58%	4.63%	4.08%	3.20%	0.68%	1.66%	1.03%	0.64%	0.79%	5.41%	2.62%

**COMPARISON OF THE MONTHLY AVERAGE DAILY TRAFFIC (MADT) FOR 2017 AND 2016
AND ANNUAL AVERAGE DAILY TRAFFIC (AADT)**

RURAL PRIMARY

LOCATION AND STATION NUMBER		JAN. MADT	FEB. MADT	MARCH MADT	APRIL MADT	MAY MADT	JUNE MADT	JULY MADT	AUG. MADT	SEPT. MADT	OCT. MADT	NOV. MADT	DEC. MADT	ANNUAL AADT
US 30 3.5 MI EAST OF IA 1	2017	5144	5521	5755	6060	6252	6427	6157	6350	6363	6145	5952	5499	5969
LISBON	2016	5146	5359	5789	6057	6312	6445	6282	6319	6347	6297	6021	5367	5978
259-16	%	-0.04%	3.02%	-0.59%	0.05%	-0.95%	-0.28%	-1.99%	0.49%	0.25%	-2.41%	-1.15%	2.46%	-0.15%
US 71 0.6 MI SOUTH OF CO RD J64	2017	2051	2255	2398	2480	2587	2665	2512	2484	2484	2511	2429	2240	2425
BRADDYVILLE	2016	2121	2266	2410	2459	2576	2592	2506	2416	2457	2495	2435	2263	2416
260-73	%	-3.30%	-0.49%	-0.50%	0.85%	0.43%	2.82%	0.24%	2.81%	1.10%	0.64%	-0.25%	-1.02%	0.37%
US 169 2.3 MI NORTH OF CO RD D14	2017	4990	5331	5679	6224	6321	6453	6369	6320	6422	6159	6001	5740	6001
FORT DODGE	2016	5181	5149	5638	6181	6673	6411	6194	6297	6356	6305	6034	5758	6015
261-94	%	-3.69%	3.53%	0.73%	0.70%	-5.27%	0.66%	2.83%	0.37%	1.04%	-2.32%	-0.55%	-0.31%	-0.23%
US 63 1.6 MI SOUTH OF IA 2	2017	1853	2037	2200	2244	2437	2531	2556	2478	2427	2304	2203	2054	2277
BLOOMFIELD	2016	1875	1986	2229	2274	2457	2538	2645	2497	2440	2378	2306	2031	2305
262-26	%	-1.17%	2.57%	-1.30%	-1.32%	-0.81%	-0.28%	-3.36%	-0.76%	-0.53%	-3.11%	-4.47%	1.13%	-1.21%
US 52 0.3 MI EAST OF CO RD X47	2017	1959	2223	2281	2504	2698	2742	2811	2754	2778	2681	2412	2180	2502
GARNAVILLO	2016	1981	2050	2260	2457	2617	2739	2746	2779	2782	2780	2462	2152	2484
263-22	%	-1.11%	8.44%	0.93%	1.91%	3.10%	0.11%	2.37%	-0.90%	-0.14%	-3.56%	-2.03%	1.30%	0.72%
IA 27 3.0 MI SOUTH OF CO RD W62	2017	5276	5784	6869	6685	7005	7497	7631	7560	6910	6806	6591	6283	6741
ARGYLE	2016	5274	5520	6949	6471	7138	7601	7889	7405	7076	7009	6641	5962	6745
264-56	%	0.04%	4.78%	-1.15%	3.31%	-1.86%	-1.37%	-3.27%	2.09%	-2.35%	-2.90%	-0.75%	5.38%	-0.06%
US 61 1.0 MI NORTH OF CO RD E17	2017	6770	7467	7809	8375	8733	9253	9149	9061	9098	8821	8252	7430	8351
MAQUOKETA	2016	6750	7098	7778	8071	8509	8978	8893	8766	8686	8567	8063	7009	8097
265-49	%	0.30%	5.20%	0.40%	3.77%	2.63%	3.06%	2.88%	3.37%	4.74%	2.96%	2.34%	6.01%	3.14%
IA 2 0.8 MI WEST OF US 63	2017	1501	1666	1776	1854	2012	1994	1920	1906	1937	1864	1768	1699	1825
WEST GROVE	2016	1503	1593	1715	1822	1899	1907	1883	1821	1899	1897	1743	1589	1772
266-26	%	-0.13%	4.58%	3.56%	1.76%	5.95%	4.56%	1.96%	4.67%	2.00%	-1.74%	1.43%	6.92%	2.99%
US 34 3.0 MI WEST OF US 59	2017	4112	4321	4482	4650	4930	4836	4579	4705	4730	4652	4578	4496	4589
EMERSON	2016	4101	4029	4558	4600	4953	4852	4608	4714	4797	4789	4554	4407	4580
267-65	%	0.27%	7.25%	-1.67%	1.09%	-0.46%	-0.33%	-0.63%	-0.19%	-1.40%	-2.86%	0.53%	2.02%	0.20%
US 30 3.5 MI NE OF NORTH JCT IA 37	2017	2646	2833	3083	3315	3505	3477	3338	3320	3306	3205	3305	3075	3201
DOW CITY	2016	2683	2691	3137	3232	3390	3489	3399	3405	3388	3271	3140	2930	3180
268-24	%	-1.38%	5.28%	-1.72%	2.57%	3.39%	-0.34%	-1.79%	-2.50%	-2.42%	-2.02%	5.25%	4.95%	0.66%

**COMPARISON OF THE MONTHLY AVERAGE DAILY TRAFFIC (MADT) FOR 2017 AND 2016
AND ANNUAL AVERAGE DAILY TRAFFIC (AADT)**

RURAL PRIMARY

LOCATION AND STATION NUMBER		JAN. MADT	FEB. MADT	MARCH MADT	APRIL MADT	MAY MADT	JUNE MADT	JULY MADT	AUG. MADT	SEPT. MADT	OCT. MADT	NOV. MADT	DEC. MADT	ANNUAL AADT
IA 13 1.5 MI NORTH OF CO RD C64 DUNDEE 279-28	2017	2082	2204	2250	2443	2636	2731	2649	2548	2616	2642	2365	2275	2453
	2016	2027	2117	2272	2580	2942	2897	2663	2516	2568	2625	2408	2239	2488
	%	2.71%	4.11%	-0.97%	-5.31%	-10.40%	-5.73%	-0.53%	1.27%	1.87%	0.65%	-1.79%	1.61%	-1.41%
IA 2 2.0 MI WEST OF I 35 LEON 280-27	2017	1143	1248	1269	1360	1417	1475	1360	1376	1368	1376	1352	1259	1334
	2016	1074	1138	1245	1384	1470	1526	1400	1388	1372	1353	1361	1201	1326
	%	6.42%	9.67%	1.93%	-1.73%	-3.61%	-3.34%	-2.86%	-0.86%	-0.29%	1.70%	-0.66%	4.83%	0.60%
US 151 4.4 MI SOUTH OF IA 38 MONTICELLO 281-53	2017	9919	10700	11221	12057	12781	13445	13972	13347	12774	12706	12126	11090	12178
	2016	9843	10216	11369	11632	12610	13382	13886	13069	12624	12783	11939	10570	11994
	%	0.77%	4.74%	-1.30%	3.65%	1.36%	0.47%	0.62%	2.13%	1.19%	-0.60%	1.57%	4.92%	1.53%
US 52 9.5 MI SOUTH OF IA 62 BELLEVUE 282-49	2017	572	699	707	816	937	1041	1060	983	1025	967	766	637	851
	2016	662	684	762	831	1035	1083	1096	1023	1024	1063	813	577	888
	%	-13.60%	2.19%	-7.22%	-1.81%	-9.47%	-3.88%	-3.28%	-3.91%	0.10%	-9.03%	-5.78%	10.40%	-4.17%
US 61/218 0.8 MI SOUTH OF N JCT US 61/218 KEOKUK 283-56	2017	7434	8299	8387	8677	8801	8842	8410	8711	8584	8814	8131	7973	8422
	2016	7875	8224	8513	8848	9050	9497	8915	9220	9169	9100	8537	7818	8730
	%	-5.60%	0.91%	-1.48%	-1.93%	-2.75%	-6.90%	-5.66%	-5.52%	-6.38%	-3.14%	-4.76%	1.98%	-3.53%
IA 9 1.0 MI WEST OF 6TH ST LANSING 284-03	2017	1455	1650	1692	1994	2178	2255	2412	2335	2202	2086	1776	1701	1978
	2016	1597	1643	1782	2046	2286	2328	2324	2394	2169	2125	1819	1557	2006
	%	-8.89%	0.43%	-5.05%	-2.54%	-4.72%	-3.14%	3.79%	-2.46%	1.52%	-1.84%	-2.36%	9.25%	-1.40%
US 20 1.3 MI EAST OF IA 4 ROCKWELL CITY 285-13	2017	4568	5046	5700	5968	6453	6746	6982	6837	6672	6189	6399	5760	6110
	2016	4752	4840	6041	5962	6548	6931	7085	6950	6794	6241	6137	5069	6112
	%	-3.87%	4.26%	-5.64%	0.10%	-1.45%	-2.67%	-1.45%	-1.63%	-1.80%	-0.83%	4.27%	13.63%	-0.03%
US 34 2.0 MI WEST OF I 29 GLENWOOD 286-65	2017	5249	5767	6193	6545	7101	7366	7153	7296	6949	6913	7167	6401	6675
	2016	5307	5568	6301	6556	7057	7354	7229	7186	7037	7003	6305	5745	6554
	%	-1.09%	3.57%	-1.71%	-0.17%	0.62%	0.16%	-1.05%	1.53%	-1.25%	-1.29%	13.67%	11.42%	1.85%
US 20 0.6 MI EAST OF US 75 LAWTON 287-97	2017	9872	10763	11368	12032	12614	13138	13104	13634	13134	13350	12525	11653	12266
	2016	10409	10520	11288	11724	12311	12316	11943	12397	11761	12169	11316	10855	11584
	%	-5.16%	2.31%	0.71%	2.63%	2.46%	6.67%	9.72%	9.98%	11.67%	9.70%	10.68%	7.35%	5.89%
TOTAL	2017	389745	423374	444532	429126	408084	431972	407616	389316	384118	379861	403271	387637	
	2016	389435	403346	445908	420131	406208	430568	405870	385905	381518	381553	399912	373749	
	%	0.08%	4.97%	-0.31%	2.14%	0.46%	0.33%	0.43%	0.88%	0.68%	-0.44%	0.84%	3.72%	

NOTE: Numbers in red denote estimated traffic due to road construction, inaccurate, or insufficient data. Monthly data for sites without comparable data are not include in TOTAL.
NOTE: Site 236-81 IA 196 is now classified as US 71 so due to the rerouting of US 71 traffic the 2017 MADT's will not be used in the total Rural Primary percentage calculations.

**COMPARISON OF THE MONTHLY AVERAGE DAILY TRAFFIC (MADT) FOR 2017 AND 2016
AND ANNUAL AVERAGE DAILY TRAFFIC (AADT)**

RURAL COUNTY - PAVED

LOCATION AND STATION NUMBER		JAN. MADT	FEB. MADT	MARCH MADT	APRIL MADT	MAY MADT	JUNE MADT	JULY MADT	AUG. MADT	SEPT. MADT	OCT. MADT	NOV. MADT	DEC. MADT	ANNUAL AADT
CO RD P14 2.7 MI NORTH OF CO RD E33 CHURDAN 300-37	2017	NO DATA	NO DATA	NO DATA	NO DATA	NO DATA	NO DATA	NO DATA	NO DATA	NO DATA	339	NO DATA	NO DATA	NO AADT
	2016	193	197	233	269	273	267	240	236	251	329	255	219	247
	%										3.04%			
CO RD S14 0.8 MI SOUTH OF CO RD E29 NEVADA 301-85	2017	788	852	941	1088	1138	1151	1098	1028	1058	1043	1028	891	1009
	2016	778	776	925	1113	1134	1156	1049	1028	1053	1088	962	847	992
	%	1.29%	9.79%	1.73%	-2.25%	0.35%	-0.43%	4.67%	0.00%	0.47%	-4.14%	6.86%	5.19%	1.71%
CO RD M55 0.2 MI NORTH OF IA 141 MANILLA 302-24	2017	653	714	801	847	912	859	NO DATA	NO DATA	NO DATA	NO DATA	795	708	NO AADT
	2016	666	666	828	864	913	889	881	856	836	873	831	715	818
	%	-1.95%	7.21%	-3.26%	-1.97%	-0.11%	-3.37%					-4.33%	-0.98%	
CO RD K45 2.25 MI SOUTH OF IA 175 ONAWA 303-67	2017	837	931	1031	1156	1246	1247	1212	1151	1159	1163	1161	964	1105
	2016	894	944	1044	1148	1241	1264	1210	1211	1213	1201	1109	956	1120
	%	-6.38%	-1.38%	-1.25%	0.70%	0.40%	-1.34%	0.17%	-4.95%	-4.45%	-3.16%	4.69%	0.84%	-1.34%
CO RD V45 3.5 MI NORTH OF IA 92 SIGOURNEY 304-54	2017	533	581	640	695	727	702	696	646	678	754	672	627	663
	2016	554	571	647	707	694	700	648	631	677	701	625	566	643
	%	-3.79%	1.75%	-1.08%	-1.70%	4.76%	0.29%	7.41%	2.38%	0.15%	7.56%	7.52%	10.78%	3.11%
CO RD E53 1.75 MI EAST OF IA 25 SCRANTON 306-37	2017	425	NO DATA	513	568	589	600	545	563	577	613	548	486	NO AADT
	2016	411	379	537	585	596	603	583	556	567	627	546	483	539
	%	3.41%		-4.47%	-2.91%	-1.17%	-0.50%	-6.52%	1.26%	1.76%	-2.23%	0.37%	0.62%	
CO RD R38 2.2 MI NORTH OF CO RD C54 CLARION 307-99	2017	1089	1272	1335	1432	1480	1527	1440	1454	1490	1533	1429	1295	1398
	2016	1156	1196	1341	1471	1501	1574	1468	1537	1519	1610	1421	1255	1421
	%	-5.80%	6.35%	-0.45%	-2.65%	-1.40%	-2.99%	-1.91%	-5.40%	-1.91%	-4.78%	0.56%	3.19%	
CO RD N32 1.6 MI NORTH OF IA 9 ESTHERVILLE 308-32	2017	239	285	313	389	421	NO DATA	393	377	377	438	389	319	NO AADT
	2016	269	264	327	384	NO DATA	395	359	364	375	412	358	287	NO AADT
	%	-11.15%	7.95%	-4.28%	1.30%			9.47%	3.57%	0.53%	6.31%	8.66%	11.15%	
CO RD K52 1.5 MI SOUTH OF US 18 HULL 309-84	2017	1215	NO DATA	1421	1580	1525	1533	1478	1494	1533	1599	1541	1342	NO AADT
	2016	1022	1091	1294	1481	1521	1448	1464	1446	1536	1598	1399	1246	1379
	%	18.88%		9.81%	6.68%	0.26%	5.87%	0.96%	3.32%	-0.20%	0.06%	10.15%	7.70%	
CO RD Y52 1.5 MI SOUTH OF US 30 GRAND MOUND 310-23	2017	402	433	472	545	560	559	508	523	525	577	527	477	509
	2016	409	422	478	532	584	551	508	517	528	577	536	443	507
	%	-1.71%	2.61%	-1.26%	2.44%	-4.11%	1.45%	0.00%	1.16%	-0.57%	0.00%	-1.68%	7.67%	0.39%

**COMPARISON OF THE MONTHLY AVERAGE DAILY TRAFFIC (MADT) FOR 2017 AND 2016
AND ANNUAL AVERAGE DAILY TRAFFIC (AADT)**

RURAL COUNTY - PAVED

LOCATION AND STATION NUMBER		JAN. MADT	FEB. MADT	MARCH MADT	APRIL MADT	MAY MADT	JUNE MADT	JULY MADT	AUG. MADT	SEPT. MADT	OCT. MADT	NOV. MADT	DEC. MADT	ANNUAL AADT
CO RD W12 3.5 MI SOUTH OF US 30 WATKINS 311-06	2017 2016 %	697 688 1.31%	737 726 1.52%	758 786 -3.56%	829 856 -3.15%	881 898 -1.89%	844 855 -1.29%	800 766 4.44%	819 794 3.15%	848 851 -0.35%	820 863 -4.98%	815 804 1.37%	744 702 5.98%	799 799 0.00%
CO RD E26 2.7 MI WEST OF CO RD R38 BOONE 312-08	2017 2016 %	1406 1282 9.67%	NO DATA 1276	1633 1499 8.94%	1805 1633 10.53%	1856 1620 14.57%	1893 1674 13.08%	1857 1665 11.53%	1893 1834 3.22%	1869 1994 -6.27%	1865 1848 0.92%	1753 1706 2.75%	1602 1525 5.05%	NO AADT 1630
CO RD D42 0.2 MI EAST OF IA 13 MANCHESTER 313-28	2017 2016 %	554 581 -4.65%	597 564 5.85%	647 656 -1.37%	768 763 0.66%	903 860 5.00%	983 896 9.71%	961 870 10.46%	900 868 3.69%	872 841 3.69%	818 829 -1.33%	741 724 2.35%	656 617 6.32%	783 756 3.57%
CO RD 105 1.3 MI EAST OF CO RD S56 NORTHWOOD 314-98	2017 2016 %	583 641 -9.05%	653 632 3.32%	689 751 -8.26%	785 834 -5.88%	846 846 0.00%	872 887 -1.69%	767 821 -6.58%	NO DATA 817	NO DATA 766	749 758 -1.19%	708 686 3.21%	635 609 4.27%	NO AADT 754
CO RD 5.5 MI WEST OF US 63 DRAKESVILLE 315-26	2017 2016 %	517 505 2.38%	565 517 9.28%	613 618 -0.81%	700 709 -1.27%	NO DATA 799	NO DATA 908	NO DATA 816	800 735 8.84%	786 741 6.07%	708 758 -6.60%	627 629 -0.32%	579 555 4.32%	655 691 -5.21%
CO RD D36 2.8 MI EAST OF CO RD N57 ROCKWELL CITY 316-13	2017 2016 %	783 788 -0.63%	828 766 8.09%	931 928 0.32%	1000 1017 -1.67%	1070 1050 1.90%	1111 1071 3.73%	915 999 -8.41%	NO DATA 1007	994 NO DATA	1002 NO DATA	964 NO DATA	886 NO DATA	NO AADT NO AADT
TOTAL RURAL COUNTY PAVED	2017 2016 %	10721 10644 0.72%	8448 8044 5.02%	12738 12659 0.62%	14187 14097 0.64%	13733 13458 2.04%	13881 13568 2.31%	12670 12410 2.10%	11648 11521 1.10%	11772 11895 -1.03%	13019 13199 -1.36%	12734 12336 3.23%	11325 10806 4.80%	

NOTE: Numbers in red denote estimated traffic due to road construction, inaccurate, or insufficient data. Monthly data for sites without comparable data are not include in TOTAL.

**COMPARISON OF THE MONTHLY AVERAGE DAILY TRAFFIC (MADT) FOR 2017 AND 2016
AND ANNUAL AVERAGE DAILY TRAFFIC (AADT)**

RURAL COUNTY - GRAVEL

LOCATION AND STATION NUMBER		JAN. MADT	FEB. MADT	MARCH MADT	APRIL MADT	MAY MADT	JUNE MADT	JULY MADT	AUG. MADT	SEPT. MADT	OCT. MADT	NOV. MADT	DEC. MADT	ANNUAL AADT
CO RD B30 0.5 MI EAST OF CO RD L48 PRIMGHAR 400-71	2017 2016 %	15 13 15.38%	15 10 50.00%	14 14 0.00%	18 19 -5.26%	24 27 -11.11%	22 21 4.76%	21 36 -41.67%	18 NO DATA	20 NO DATA	36 49 -26.53%	23 24 -4.17%	18 14 28.57%	20 NO AADT
LOCAL ROAD 1.80 MI NORTH OF CO RD E36 CLUTIER 401-86	2017 2016 %	19 25 -24.00%	25 25 0.00%	24 26 -7.69%	31 29 6.90%	36 NO DATA	31 NO DATA	38 39 -2.56%	25 34 -26.47%	32 38 -15.79%	37 43 -13.95%	42 39 7.69%	23 26 -11.54%	30 NO AADT
LOCAL ROAD .80 MI EAST OF CO RD V18 CLUTIER 402-86	2017 2016 %	NO DATA 30	NO DATA 32	NO DATA 39	NO DATA 50	42 58 -27.59%	40 51 -21.57%	44 45 -2.22%	38 49 -22.45%	44 56 -21.43%	51 64 -20.31%	50 NO DATA	32 NO DATA	NO AADT NO AADT
CO RD H47 5.0 MI SOUTH OF US 34 ALBIA 403-68	2017 2016 %	84 79 6.33%	93 77 20.78%	94 95 -1.05%	99 97 2.06%	110 100 10.00%	111 109 1.83%	105 106 -0.94%	103 103 0.00%	96 100 -4.00%	102 115 -11.30%	117 109 7.34%	106 95 11.58%	102 99 3.03%
LOCAL ROAD 2.5 MI NORTH OF US 18 BASSETT 405-19	2017 2016 %	51 51 0.00%	60 50 20.00%	54 54 0.00%	63 75 -16.00%	108 95 13.68%	74 67 10.45%	64 61 4.92%	58 63 -7.94%	NO DATA 65	70 74 -5.41%	70 65 7.69%	70 60 16.67%	NO AADT 65
LOCAL ROAD 2.0 MI EAST OF US 169 LORIMOR 406-88	2017 2016 %	51 51 0.00%	50 50 0.00%	57 57 0.00%	63 59 6.78%	68 68 0.00%	75 74 1.35%	59 57 3.51%	61 56 8.93%	51 54 -5.56%	58 57 1.75%	66 61 8.20%	54 61 -11.48%	59 59 0.00%
CO ROAD H23 2.0 MI EAST OF US 169 LORIMOR 407-88	2017 2016 %	56 65 -13.85%	58 61 -4.92%	63 60 5.00%	73 64 14.06%	78 77 1.30%	91 84 8.33%	75 70 7.14%	69 65 6.15%	66 61 8.20%	79 62 27.42%	73 64 14.06%	65 72 -9.72%	70 67 4.48%
TOTAL RURAL COUNTY GRAVEL	2017 2016 %	276 284 -2.82%	301 273 10.26%	306 306 0.00%	347 343 1.17%	430 425 1.18%	413 406 1.72%	385 378 1.85%	354 370 -4.32%	289 309 -6.47%	433 464 -6.68%	391 362 8.01%	336 328 2.44%	
TOTAL RURAL COUNTY PAVED & GRAVEL	2017 2016 %	10997 10928 0.63%	8749 8317 5.19%	13044 12965 0.61%	14534 14440 0.65%	14163 13883 2.02%	14294 13974 2.29%	13055 12788 2.09%	12002 11891 0.93%	12061 12204 -1.17%	13452 13663 -1.54%	13125 12698 3.36%	11661 11134 4.73%	

NOTE: Numbers in red denote estimated traffic due to road construction, inaccurate, or insufficient data. Monthly data for sites without comparable data are not included in TOTAL.

**COMPARISON OF THE MONTHLY AVERAGE DAILY TRAFFIC (MADT) FOR 2017 AND 2016
AND ANNUAL AVERAGE DAILY TRAFFIC (AADT)**

RECREATIONAL PRIMARY

LOCATION AND STATION NUMBER		JAN. MADT	FEB. MADT	MARCH MADT	APRIL MADT	MAY MADT	JUNE MADT	JULY MADT	AUG. MADT	SEPT. MADT	OCT. MADT	NOV. MADT	DEC. MADT	ANNUAL AADT
US 71 0.1 MI SOUTH OF CO RD B14	2017	6751	7263	7759	8541	9532	11012	11500	10644	10544	8393	7676	7280	8908
FOSTORIA	2016	6978	6931	7808	8519	9476	10680	10852	10243	10084	8391	7715	7210	8741
500-21	%	-3.25%	4.79%	-0.63%	0.26%	0.59%	3.11%	5.97%	3.91%	4.56%	0.02%	-0.51%	0.97%	1.91%
IA 5 3.8 MI SOUTH OF US 34	2017	3309	3628	3859	4198	4512	4702	4701	4503	4384	4060	3889	3604	4112
MORAVIA	2016	3325	3468	3835	4047	4515	4794	4714	4530	4365	4217	3959	3508	4106
501-68	%	-0.48%	4.61%	0.63%	3.73%	-0.07%	-1.92%	-0.28%	-0.60%	0.44%	-3.72%	-1.77%	2.74%	0.15%
IA 415 0.5 MI WEST OF NW POLK CITY RD	2017	6644	7162	7480	8852	10099	10583	10331	10078	10003	9347	8286	7594	8872
POLK CITY	2016	6329	6597	7587	8665	9730	10379	9540	9374	9304	8837	7732	6938	8418
503-77	%	4.98%	8.56%	-1.41%	2.16%	3.79%	1.97%	8.29%	7.51%	7.51%	5.77%	7.17%	9.46%	5.39%
TOTAL RECREATIONAL PRIMARY	2017	16704	18053	19098	21591	24143	26297	26532	25225	24931	21800	19851	18478	
	2016	16632	16996	19230	21231	23721	25853	25106	24147	23753	21445	19406	17656	
	%	0.43%	6.22%	-0.69%	1.70%	1.78%	1.72%	5.68%	4.46%	4.96%	1.66%	2.29%	4.66%	

RECREATIONAL SECONDARY

LOCATION AND STATION NUMBER		JAN. MADT	FEB. MADT	MARCH MADT	APRIL MADT	MAY MADT	JUNE MADT	JULY MADT	AUG. MADT	SEPT. MADT	OCT. MADT	NOV. MADT	DEC. MADT	ANNUAL AADT
CO RD F25 0.1 MI WEST OF CO RD P18	2017	97	118	131	169	221	263	252	201	186	168	150	118	173
SPRINGBROOK STATE PARK	2016	114	115	131	165	195	249	279	245	207	216	150	116	182
600-39	%	-14.91%	2.61%	0.00%	2.42%	13.33%	5.62%	-9.68%	-17.96%	-10.14%	-22.22%	0.00%	1.72%	-4.95%
ENTRANCE TO GEORGE WYTH STATE PARK	2017	276	407	447	828	1212	1662	1579	1113	970	525	336	310	806
WATERLOO	2016	325	366	520	862	1246	1672	1407	1029	949	478	351	260	789
602-07	%	-15.08%	11.20%	-14.04%	-3.94%	-2.73%	-0.60%	12.22%	8.16%	2.21%	9.83%	-4.27%	19.23%	2.15%
ENTRANCE TO GREEN VALLEY STATE PARK	2017	142	190	188	301	573	594	505	436	413	249	144	113	321
GREEN VALLEY STATE PARK	2016	119	167	214	315	532	624	519	388	437	312	149	108	324
603-88	%	19.33%	13.77%	-12.15%	-4.44%	7.71%	-4.81%	-2.70%	12.37%	-5.49%	-20.19%	-3.36%	4.63%	-0.93%
TOTAL RECREATIONAL SECONDARY	2017	515	715	766	1298	1785	2519	2336	1750	1569	942	630	541	
	2016	558	648	865	1342	1778	2545	2205	1662	1593	1006	650	484	
	%	-7.71%	10.34%	-11.45%	-3.28%	0.39%	-1.02%	5.94%	5.29%	-1.51%	-6.36%	-3.08%	11.78%	
TOTAL RECREATIONAL PRIMARY AND SECONDARY	2017	17219	18768	19864	22889	25928	28816	28868	26975	26500	22742	20481	19019	
	2016	17190	17644	20095	22573	25499	28398	27311	25809	25346	22451	20056	18140	
	%	0.17%	6.37%	-1.15%	1.40%	1.68%	1.47%	5.70%	4.52%	4.55%	1.30%	2.12%	4.85%	

NOTE: Numbers in red denote estimated traffic due to road construction, inaccurate, or insufficient data. Monthly data for sites without comparable data are not include in TOTAL.

NOTE: Site 600-39 shows lower volumes in May 2016 due to the campground being closed until 5/26/2016

**COMPARISON OF THE MONTHLY AVERAGE DAILY TRAFFIC (MADT) FOR 2017 AND 2016
AND ANNUAL AVERAGE DAILY TRAFFIC (AADT)**

MUNICIPAL INTERSTATE

LOCATION AND STATION NUMBER		JAN. MADT	FEB. MADT	MARCH MADT	APRIL MADT	MAY MADT	JUNE MADT	JULY MADT	AUG. MADT	SEPT. MADT	OCT. MADT	NOV. MADT	DEC. MADT	ANNUAL AADT
I 380 BTWN WILSON AVE AND 33RD AVE CEDAR RAPIDS 701-57	2017	64904	70369	71709	74835	75182	77258	NO DATA	NO DATA	NO DATA	75878	72263	66808	NO AADT
	2016	63802	67398	70461	73255	73458	74576	72825	75170	77316	76334	70777	64796	71681
	%	1.73%	4.41%	1.77%	2.16%	2.35%	3.60%				-0.60%	2.10%	3.11%	
I 380 AT J AVE BRIDGE S OF COLDSTREAM CEDAR RAPIDS 703-57	2017	NO DATA	NO DATA	NO DATA	NO DATA	91357	93709	89392	91477	90334	90859	87437	82415	NO AADT
	2016	73844	76674	79731	NO DATA	NO DATA	NO DATA	NO DATA	NO DATA	NO DATA	NO DATA	NO DATA	NO DATA	NO AADT
	%													
I 29/80 0.6 MI WEST OF IA 192 COUNCIL BLUFFS 704-78	2017	NO DATA	NO DATA	NO DATA	NO DATA	NO DATA	NO DATA	NO DATA	NO DATA	NO DATA	NO DATA	NO DATA	NO DATA	NO DATA
	2016	NO DATA	NO DATA	NO DATA	NO DATA	NO DATA	NO DATA	NO DATA	NO DATA	NO DATA	NO DATA	NO DATA	NO DATA	NO AADT
	%													
I 74 0.6 MI SOUTH OF US 6 BETTENDORF 705-82	2017	46839	49789	51283	52969	53503	54214	52385	53119	52503	52832	51975	53888	NO AADT
	2016	46315	48943	50162	NO DATA	NO DATA	NO DATA	NO DATA	NO DATA	49222	51262	49957	47484	NO AADT
	%	1.13%	1.73%	2.23%						6.67%	3.06%	4.04%	13.49%	
I 280 0.3 MI SOUTH OF IA 22 DAVENPORT 708-82	2017	21175	21632	23310	24667	26608	27931	27667	28472	26787	26309	24067	21435	25005
	2016	NO DATA	NO DATA	NO DATA	26063	28908	NO DATA	NO DATA	NO DATA	NO DATA	26335	24475	21186	NO AADT
	%				-5.36%	-7.96%					-0.10%	-1.67%	1.18%	
I 35 NORTH OF ORALABOR RD ANKENY 709-77	2017	58193	62222	64604	67471	68978	70592	68117	70571	67742	69350	66467	61806	66343
	2016	56862	59294	64165	66493	68497	69703	67197	70889	67088	68888	65619	60579	65440
	%	2.34%	4.94%	0.68%	1.47%	0.70%	1.28%	1.37%	-0.45%	0.97%	0.67%	1.29%	2.03%	1.38%
I 235 0.4 MI NORTH OF EUCLID AVE DES MOINES 714-77	2017	66041	71725	72801	76301	75444	78971	77011	82386	76454	78122	74585	69269	74926
	2016	63575	66807	71359	74396	74701	78198	74347	79357	73697	75588	71209	66461	72475
	%	3.88%	7.36%	2.02%	2.56%	0.99%	0.99%	3.58%	3.82%	3.74%	3.35%	4.74%	4.23%	3.38%
I 29 1.5 MI EAST OF IA 12 SIOUX CITY 715-97	2017	29412	NO DATA	33792	35637	37308	39283	38208	37643	35884	35357	34328	32747	NO AADT
	2016	NO DATA	27021	29496	NO DATA	NO DATA	NO DATA	NO DATA	32982	29613	28146	NO DATA	NO DATA	NO AADT
	%			14.56%					14.13%	21.18%	25.62%			
I 35/80 WEST OF 2ND AVE DES MOINES 716-77	2017	85999	91559	96070	101109	104871	109485	107204	109664	104160	105340	NO DATA	NO DATA	NO AADT
	2016	NO DATA	NO DATA	NO DATA	NO DATA	NO DATA	NO DATA	NO DATA	NO DATA	NO DATA	102229	102650	98685	NO AADT
	%										1.89%	2.62%		
I 380/ US 20 WEST OF EVANSDALE DR. WATERLOO 717-07	2017	NO DATA	NO DATA	NO DATA	NO DATA	NO DATA	NO DATA	36575	36795	35852	35738	34930	31587	NO AADT
	2016	NO DATA	NO DATA	NO DATA	NO DATA	NO DATA	NO DATA	NO DATA	NO DATA	NO DATA	NO DATA	NO DATA	NO DATA	NO AADT
	%													
I 80 0.8 MI WEST OF JORDAN CREEK PARKWAY WAUKEE 116-25	2017	PREVIOUSLY GROUPED IN RURAL INTERSTATE				51457	54276	53474	55230	51779	51027	48632	44275	48840
	2016	PREVIOUSLY GROUPED IN RURAL INTERSTATE				48670	51105	51481	52446	48933	48293	46016	42811	45973
	%					5.73%	6.20%	3.87%	5.31%	5.82%	5.66%	5.68%	3.42%	6.24%
I 80 1.8 MI EAST OF EAST JCT. I 35/80/235 ALTOONA 117-77	2017	PREVIOUSLY GROUPED IN RURAL INTERSTATE				87926	92573	91554	92989	86835	86756	85411	80201	NO AADT
	2016	PREVIOUSLY GROUPED IN RURAL INTERSTATE				85168	89346	87963	87898	78454	71876	69722	60948	77337
	%					3.24%	3.61%	4.08%	5.79%	10.68%	20.70%	22.50%	31.59%	
I 380 6.0 MI NORTH OF I 80 NORTH LIBERTY 125-52	2017	PREVIOUSLY GROUPED IN RURAL INTERSTATE				57667	59405	57756	59411	58947	58832	56528	51465	56073
	2016	PREVIOUSLY GROUPED IN RURAL INTERSTATE				56105	58066	57265	58891	NO DATA	NO DATA	55524	49866	NO AADT
	%					2.78%	2.31%	0.86%	0.88%			1.81%	3.21%	
TOTAL MUNICIPAL INTERSTATE	2017	235977	254105	260397	243274	443262	433075	347912	360587	386970	458858	394517	315058	
	2016	230554	242442	256147	240207	435507	420994	338253	349481	370401	449350	383577	305699	
	%	2.35%	4.81%	1.66%	1.28%	1.78%	2.87%	2.86%	3.18%	4.47%	2.12%	2.85%	3.06%	

NOTE: Numbers in red denote estimated traffic due to road construction, inaccurate, or insufficient data. Monthly data for sites without comparable data are not include in TOTAL.

Site 715-97 was not used for final calculations in 2017 due to construction influenced traffic.

**COMPARISON OF THE MONTHLY AVERAGE DAILY TRAFFIC (MADT) FOR 2017 AND 2016
AND ANNUAL AVERAGE DAILY TRAFFIC (AADT)**

MUNICIPAL PRIMARY

LOCATION AND STATION NUMBER		JAN. MADT	FEB. MADT	MARCH MADT	APRIL MADT	MAY MADT	JUNE MADT	JULY MADT	AUG. MADT	SEPT. MADT	OCT. MADT	NOV. MADT	DEC. MADT	ANNUAL AADT
US 71 WEST OF MEMPHIS AVE SPIRIT LAKE 802-30	2017	9735	9888	10449	11490	12999	13827	14027	12835	11968	10887	10146	9832	11507
	2016	10090	10092	10794	11755	13344	13919	14069	12756	11922	11137	10161	9946	11665
	%	-3.52%	-2.02%	-3.20%	-2.25%	-2.59%	-0.66%	-0.30%	0.62%	0.39%	-2.24%	-0.15%	-1.15%	-1.35%
IA 12 ON VIADUCT EAST OF COURT ST SIOUX CITY 803-97	2017	NO DATA	NO DATA	NO DATA	NO DATA	NO DATA	NO DATA	NO DATA	NO DATA	NO DATA	NO DATA	NO DATA	NO DATA	NO AADT
	2016	NO DATA	NO DATA	NO DATA	NO DATA	NO DATA	NO DATA	NO DATA	NO DATA	NO DATA	NO DATA	NO DATA	NO DATA	NO AADT
	%													
IA 4 NORTH OF 4TH AVE NW POCAHONTAS 804-76	2017	2589	2749	2913	3204	3623	3802	3781	3658	3474	3268	3118	2899	3257
	2016	2749	2719	2983	3161	3484	3626	3517	3553	3708	3422	3075	2755	3229
	%	-5.82%	1.10%	-2.35%	1.36%	3.99%	4.85%	7.51%	2.96%	-6.31%	-4.50%	1.40%	5.23%	0.87%
IA 148 SOUTH OF 11TH ST CORNING 805-02	2017	2134	2305	2486	2617	2997	3049	3053	2769	2661	2553	2443	2365	2620
	2016	2283	2332	2534	2829	3004	3252	3283	3022	2893	2775	2543	2344	2758
	%	-6.53%	-1.16%	-1.89%	-7.49%	-0.23%	-6.24%	-7.01%	-8.37%	-8.02%	-8.00%	-3.93%	0.90%	-5.00%
US 6/HICKMAN RD EAST OF SHASTA PLACE WINDSOR HEIGHTS 806-77	2017	17013	18453	18490	19388	19418	NO DATA	NO DATA	NO DATA	18626	18560	17956	18256	NO AADT
	2016	17156	17752	18148	19330	19674	19555	18739	18980	18748	18911	18423	18037	18621
	%	-0.83%	3.95%	1.88%	0.30%	-1.30%				-0.65%	-1.86%	-2.53%	1.21%	
US 71 SOUTH OF BIRCH ST AUDUBON 808-05	2017	NO DATA	NO DATA	NO DATA	NO DATA	NO DATA	NO DATA	NO DATA	4455	4434	4486	4391	4207	NO AADT
	2016	3922	4061	4544	4557	NO DATA	NO DATA	NO DATA	NO DATA	NO DATA	NO DATA	NO DATA	NO DATA	NO AADT
	%													
IA 14 NORTH OF WOODLAND ST MARSHALLTOWN 809-64	2017	NO DATA	NO DATA	NO DATA	NO DATA	5923	6007	5915	5890	5996	5671	5473	5120	NO AADT
	2016	4984	5170	5568	5868	6121	6223	5938	6105	6330	6107	5958	NO DATA	NO AADT
	%					-3.23%	-3.47%	-0.39%	-3.52%	-5.28%	-7.14%	-8.14%		
IA 92 WEST OF 'N' ST INDIANOLA 810-91	2017	NO DATA	NO DATA	NO DATA	NO DATA	NO DATA	NO DATA	NO DATA	NO DATA	12156	11632	11077	10643	NO AADT
	2016	NO DATA	NO DATA	NO DATA	NO DATA	NO DATA	NO DATA	NO DATA	NO DATA	NO DATA	NO DATA	NO DATA	NO DATA	NO AADT
	%													
IA 122 WEST OF VIRGINIA AVE MASON CITY 812-17	2017	9402	10117	10183	11146	11027	10453	9915	10315	10470	10203	9935	9692	10238
	2016	9692	9970	10245	11070	11065	10691	10256	10316	11446	11265	10632	9854	10542
	%	-2.99%	1.47%	-0.61%	0.69%	-0.34%	-2.23%	-3.32%	-0.01%	-8.53%	-9.43%	-6.56%	-1.64%	-2.88%

**COMPARISON OF THE MONTHLY AVERAGE DAILY TRAFFIC (MADT) FOR 2017 AND 2016
AND ANNUAL AVERAGE DAILY TRAFFIC (AADT)**

MUNICIPAL PRIMARY

LOCATION AND STATION NUMBER		JAN. MADT	FEB. MADT	MARCH MADT	APRIL MADT	MAY MADT	JUNE MADT	JULY MADT	AUG. MADT	SEPT. MADT	OCT. MADT	NOV. MADT	DEC. MADT	ANNUAL AADT
US 6 EAST OF PINE ST DAVENPORT 813-82	2017	18790	20182	20120	19504	NO DATA	NO DATA	NO DATA	NO DATA	NO DATA	NO DATA	NO DATA	NO DATA	NO AADT
	2016	18542	19988	20126	20590	20960	20809	20070	20590	20392	20591	20761	20452	20323
	%	1.34%	0.97%	-0.03%	-5.27%									
IA 922 NORTH OF WILEY BLVD CEDAR RAPIDS 815-57	2017	10341	10975	11189	11766	12290	12717	11908	12020	11630	11905	11560	11343	11637
	2016	9776	10124	10930	11715	11982	12074	11536	11570	11592	11988	11684	11293	11355
	%	5.78%	8.41%	2.37%	0.44%	2.57%	5.33%	3.22%	3.89%	0.33%	-0.69%	-1.06%	0.44%	2.48%
US 34 WEST OF US 61 WEST BURLINGTON 816-29	2017	NO DATA	NO DATA	NO DATA	NO DATA	NO DATA	NO DATA	NO DATA	15193	15195	15280	14716	13810	NO AADT
	2016	NO DATA	NO DATA	NO DATA	NO DATA	NO DATA	NO DATA	NO DATA	NO DATA	NO DATA	NO DATA	NO DATA	NO DATA	NO AADT
	%													
IA 9 EAST OF 14TH ST OSAGE 819-66	2017	4113	4296	4605	5182	5611	5488	5425	5426	NO DATA	5012	4745	4423	NO AADT
	2016	4163	4278	4634	5220	5542	5470	5240	5298	5188	5259	4627	4429	4946
	%	-1.20%	0.42%	-0.63%	-0.73%	1.25%	0.33%	3.53%	2.42%		-4.70%	2.55%	-0.14%	
IA 17 NORTH OF NW 11TH ST EAGLE GROVE 820-99	2017	2534	2594	2679	2909	3092	3194	3054	2987	2946	2967	2907	2947	NO AADT
	2016	2618	2564	2785	2913	3025	3036	3072	3005	2904	3008	2828	2685	2870
	%	-3.21%	1.17%	-3.81%	-0.14%	2.21%	5.20%	-0.59%	-0.60%	1.45%	-1.36%	2.79%	9.76%	
IA 4 SOUTH OF EDGEWOOD AVE EAST JEFFERSON 821-37	2017	3329	3693	3904	4273	4549	4600	4219	4365	4529	4325	4050	3830	4139
	2016	3496	3572	4047	4422	4685	4677	4229	4397	4486	4419	3967	3645	4170
	%	-4.78%	3.39%	-3.53%	-3.37%	-2.90%	-1.65%	-0.24%	-0.73%	0.96%	-2.13%	2.09%	5.08%	-0.74%
US 6 EAST OF SYCAMORE ST IOWA CITY 823-52	2017	18459	19661	20060	21274	21559	21889	21200	22496	22306	22143	20751	19803	20967
	2016	18473	19552	19841	20951	21307	20947	20256	19746	20177	20916	19816	18851	20069
	%	-0.08%	0.56%	1.10%	1.54%	1.18%	4.50%	4.66%	13.93%	10.55%	5.87%	4.72%	5.05%	4.47%
US 69 NORTH OF 15TH ST AMES 824-85	2017	15540	16796	16597	17893	17537	17350	16787	17279	17517	17643	17012	17241	17099
	2016	15825	16452	16891	18026	NO DATA	18022	NO DATA	NO DATA	NO DATA	NO DATA	17184	17285	NO AADT
	%	-1.80%	2.09%	-1.74%	-0.74%		-3.73%					-1.00%	-0.25%	
US 65 1.5 MI NORTH OF I-80 BONDURANT 826-77	2017	12475	13685	14047	14985	15941	15937	15470	16549	14909	15023	14727	13804	14796
	2016	12317	13000	13996	14904	15469	15454	15068	16293	14775	14891	14302	13332	14483
	%	1.28%	5.27%	0.36%	0.54%	3.05%	3.13%	2.67%	1.57%	0.91%	0.89%	2.97%	3.54%	2.16%
US 61/151 @ MISSISSIPPI RIVER BRIDGE DUBUQUE 827-31	2017	18559	20453	21577	22805	23926	25241	25041	24721	23942	23579	22161	20705	22726
	2016	18725	19703	21333	22182	23624	24677	24951	24359	23542	23503	22039	19496	22344
	%	-0.89%	3.81%	1.14%	2.81%	1.28%	2.29%	0.36%	1.49%	1.70%	0.32%	0.55%	6.20%	1.71%

**COMPARISON OF THE MONTHLY AVERAGE DAILY TRAFFIC (MADT) FOR 2017 AND 2016
AND ANNUAL AVERAGE DAILY TRAFFIC (AADT)**

MUNICIPAL PRIMARY

LOCATION AND STATION NUMBER		JAN. MADT	FEB. MADT	MARCH MADT	APRIL MADT	MAY MADT	JUNE MADT	JULY MADT	AUG. MADT	SEPT. MADT	OCT. MADT	NOV. MADT	DEC. MADT	ANNUAL AADT
IA 150 SOUTH OF 12TH ST OELWEIN 828-33	2017	5265	5651	5791	6387	6723	6787	6391	6474	6608	6387	6016	5856	6195
	2016	5372	5576	5946	6305	6744	6910	6356	6434	6304	6428	5959	5676	6167
	%	-1.99%	1.35%	-2.61%	1.30%	-0.31%	-1.78%	0.55%	0.62%	4.82%	-0.64%	0.96%	3.17%	0.45%
IA 23 1.0 MI SOUTH OF IA 92 OSKALOOSA 830-62	2017	2359	2566	2625	2778	2775	2814	2728	2751	2754	2747	2540	2434	2656
	2016	2549	2610	2805	2856	2870	2879	NO DATA	2878	2931	2904	2728	2512	NO AADT
	%	-7.45%	-1.69%	-6.42%	-2.73%	-3.31%	-2.26%		-4.41%	-6.04%	-5.41%	-6.89%	-3.11%	
IA 5 WEST OF FLEUR DRIVE DES MOINES 831-92	2017	24783	26467	27110	29436	30303	31370	30055	32033	29934	30219	29145	27931	29065
	2016	NO DATA	24894	26486	28094	29102	29535	28675	30007	28366	29395	27853	26564	NO AADT
	%		6.32%	2.36%	4.78%	4.13%	6.21%	4.81%	6.75%	5.53%	2.80%	4.64%	5.15%	
US 65 2.1 MI NORTH OF IA 163 PLEASANT HILL 250-77	2017	PREVIOUSLY GROUPED IN RURAL PRIMARY				31465	32570	31522	34510	30976	30916	30135	28276	29994
	2016	PREVIOUSLY GROUPED IN RURAL PRIMARY				30001	31147	29740	32900	29583	29802	28631	26602	28598
	%					4.88%	4.57%	5.99%	4.89%	4.71%	3.74%	5.25%	6.29%	4.88%
IA 141 0.5 MI NORTH OF IA 44 GRIMES 278-77	2017	PREVIOUSLY GROUPED IN RURAL PRIMARY				28250	28130	27128	27912	27735	26426	25384	24429	25970
	2016	PREVIOUSLY GROUPED IN RURAL PRIMARY				NO DATA	NO DATA	NO DATA	NO DATA	NO DATA	NO DATA	NO DATA	23184	NO AADT
	%												5.37%	
TOTAL MUNICIPAL PRIMARY	2017	152637	190531	194825	207037	214221	217095	190976	177303	181423	206365	214820	223119	
	2016	153826	185178	194524	206323	211043	212539	186186	172893	179530	206130	212410	215805	
	%	-0.77%	2.89%	0.15%	0.35%	1.51%	2.14%	2.57%	2.55%	1.05%	0.11%	1.13%	3.39%	

NOTE: Numbers in red denote estimated traffic due to road construction, inaccurate, or insufficient data. Monthly data for sites without comparable data are not include in TOTAL.

**COMPARISON OF THE MONTHLY AVERAGE DAILY TRAFFIC (MADT) FOR 2017 AND 2016
AND ANNUAL AVERAGE DAILY TRAFFIC (AADT)**

MUNICIPAL STREET

LOCATION AND STATION NUMBER		JAN. MADT	FEB. MADT	MARCH MADT	APRIL MADT	MAY MADT	JUNE MADT	JULY MADT	AUG. MADT	SEPT. MADT	OCT. MADT	NOV. MADT	DEC. MADT	ANNUAL AADT
LAKE ST NORTH OF 3RD ST	2017	2109	2310	2441	2586	2848	2878	2939	2708	2707	2596	2436	2280	2570
STORM LAKE	2016	2222	2340	2545	2661	2932	2919	3100	2885	2786	2744	2517	2288	2662
900-11	%	-5.09%	-1.28%	-4.09%	-2.82%	-2.86%	-1.40%	-5.19%	-6.14%	-2.84%	-5.39%	-3.22%	-0.35%	-3.46%
2ND AVE N EAST OF 15TH ST	2017	NO DATA	NO DATA	NO DATA	NO DATA	NO DATA	NO DATA	6170	6240	6244	6189	6029	5931	NO AADT
FORT DODGE	2016	5349	5545	5744	NO DATA	NO DATA	NO DATA	NO DATA	NO DATA	NO DATA	NO DATA	NO DATA	NO DATA	NO AADT
901-94	%													
LOCUST ST EAST OF SPRING ST	2017	18096	19634	19666	20603	19472	20056	18913	20220	20188	20091	19037	18204	19515
DAVENPORT	2016	18338	19707	19876	19978	19264	19372	18822	19826	19824	19823	19196	17956	19332
902-82	%	-1.32%	-0.37%	-1.06%	3.13%	1.08%	3.53%	0.48%	1.99%	1.84%	1.35%	-0.83%	1.38%	0.95%
JEFFERSON ST NORTHEAST OF E 5TH ST	2017	4970	5309	5256	NO DATA	NO DATA	NO DATA	NO DATA	NO DATA	NO DATA	5289	NO DATA	4803	NO AADT
OTTUMWA	2016	5115	5315	5605	NO DATA	NO DATA	NO DATA	NO DATA	5383	5610	5613	5877	4822	NO AADT
903-90	%	-2.83%	-0.11%	-6.23%							-5.77%		-0.39%	
JOHNSON AVE WEST OF JANICE DR	2017	7799	8339	8417	8747	8727	8368	8130	8228	8162	NO DATA	NO DATA	7621	NO AADT
CEDAR RAPIDS	2016	8075	NO DATA	NO DATA	NO DATA	NO DATA	NO DATA	NO DATA	9071	8554	9199	8774	8188	NO AADT
904-57	%	-3.42%							-9.29%	-4.58%			-6.92%	
NORTHWESTERN AVE NORTH OF 20TH ST	2017	1908	2116	2058	2309	2332	2083	1990	2080	2267	2228	2150	2053	2131
AMES	2016	1949	2010	2073	2317	NO DATA	NO DATA	2140	2179	NO DATA	2180	2088	2002	NO AADT
905-85	%	-2.10%	5.27%	-0.72%	-0.35%			-7.01%	-4.54%		2.20%	2.97%	2.55%	
DUBUQUE ST SOUTH OF DAVENPORT	2017	NO DATA	NO DATA	NO DATA	NO DATA	NO DATA	NO DATA	NO DATA	NO DATA	NO DATA	NO DATA	NO DATA	NO DATA	NO AADT
IOWA CITY	2016	11879	13599	13528	14618	13903	12867	NO DATA	NO DATA	NO DATA	NO DATA	NO DATA	NO DATA	NO AADT
906-52	%													
COLLEGE ST SOUTH OF 23RD ST	2017	7436	8368	7260	8902	6577	5730	4998	7308	8245	8722	7574	6615	7341
CEDAR FALLS	2016	7344	8161	7278	8721	6155	5616	5300	7223	8108	8505	7198	6514	7177
907-07	%	1.25%	2.54%	-0.25%	2.08%	6.86%	2.03%	-5.70%	1.18%	1.69%	2.55%	5.22%	1.55%	2.29%
LINDENWOOD ST SOUTH OF 35TH ST	2017	753	806	878	921	994	978	927	863	830	858	853	828	874
SIOUX CITY	2016	750	719	827	920	999	1038	983	978	939	964	887	843	904
908-97	%	0.40%	12.10%	6.17%	0.11%	-0.50%	-5.78%	-5.70%	-11.76%	-11.61%	-11.00%	-3.83%	-1.78%	-3.32%
HAMILTON BLVD NORTH OF CLIFTON AVE	2017	13378	14336	14962	15776	16877	16119	15539	15883	16159	15925	15485	14916	15446
SIOUX CITY	2016	13499	13550	14718	15504	16536	16250	15701	16102	16060	15995	15169	14378	15289
909-97	%	-0.90%	5.80%	1.66%	1.75%	2.06%	-0.81%	-1.03%	-1.36%	0.62%	-0.44%	2.08%	3.74%	1.03%

**COMPARISON OF THE MONTHLY AVERAGE DAILY TRAFFIC (MADT) FOR 2017 AND 2016
AND ANNUAL AVERAGE DAILY TRAFFIC (AADT)**

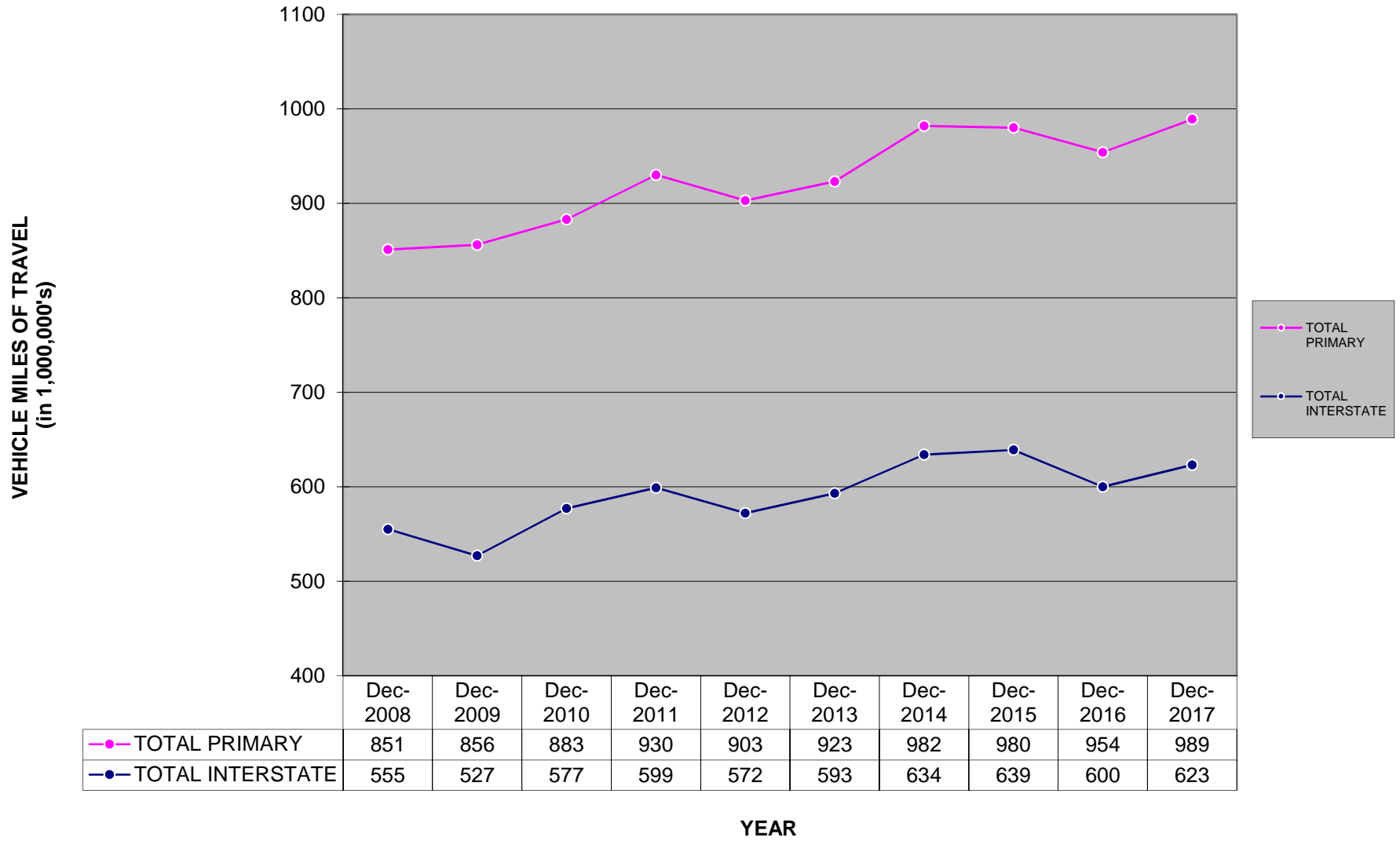
MUNICIPAL STREET

LOCATION AND STATION NUMBER		JAN. MADT	FEB. MADT	MARCH MADT	APRIL MADT	MAY MADT	JUNE MADT	JULY MADT	AUG. MADT	SEPT. MADT	OCT. MADT	NOV. MADT	DEC. MADT	ANNUAL AADT
GRANDVIEW AVE SOUTH OF PLYMOUTH CT	2017	7391	8021	8082	8935	9278	9359	8922	8775	8803	8657	8116	8156	8541
DUBUQUE	2016	7527	7837	8250	8952	9231	NO DATA	8546	NO DATA	8910	8895	8294	7971	NO AADT
910-31	%	-1.81%	2.35%	-2.04%	-0.19%	0.51%		4.40%		-1.20%	-2.68%	-2.15%	2.32%	
HUMBOLDT AVE SOUTH OF 4TH ST	2017	524	573	580	637	730	725	736	701	706	805	746	618	673
BODE	2016	528	532	609	706	731	734	693	679	697	766	660	580	660
911-46	%	-0.76%	7.71%	-4.76%	-9.77%	-0.14%	-1.23%	6.20%	3.24%	1.29%	5.09%	13.03%	6.55%	1.97%
ELM ST NORTH OF LUCAS ST	2017	2965	3212	3301	3418	3557	3612	3403	3387	3475	3263	3132	2991	3310
CRESTON	2016	3136	3294	3513	3668	3714	3702	3508	3462	3457	3319	3172	3337	3440
912-88	%	-5.45%	-2.49%	-6.03%	-6.82%	-4.23%	-2.43%	-2.99%	-2.17%	0.52%	-1.69%	-1.26%	-10.37%	-3.78%
N 16TH ST SOUTH OF AVE "N"	2017	9112	10019	10376	10962	11618	11614	11115	11416	11272	11145	11019	10894	10880
COUNCIL BLUFFS	2016	8846	9499	10065	10108	10654	10851	10326	10709	10754	10770	10240	10005	10236
914-78		3.01%	5.47%	3.09%	8.45%	9.05%	7.03%	7.64%	6.60%	4.82%	3.48%	7.61%	8.89%	6.29%
TOTAL MUNICIPAL STREET	2017	76441	74704	74860	75049	71951	61712	69482	72794	80547	79579	70548	79979	
	2016	77329	72964	75359	73535	70216	60482	69119	73114	80089	79574	69421	78884	
	%	-1.15%	2.38%	-0.66%	2.06%	2.47%	2.03%	0.53%	-0.44%	0.57%	0.01%	1.62%	1.39%	

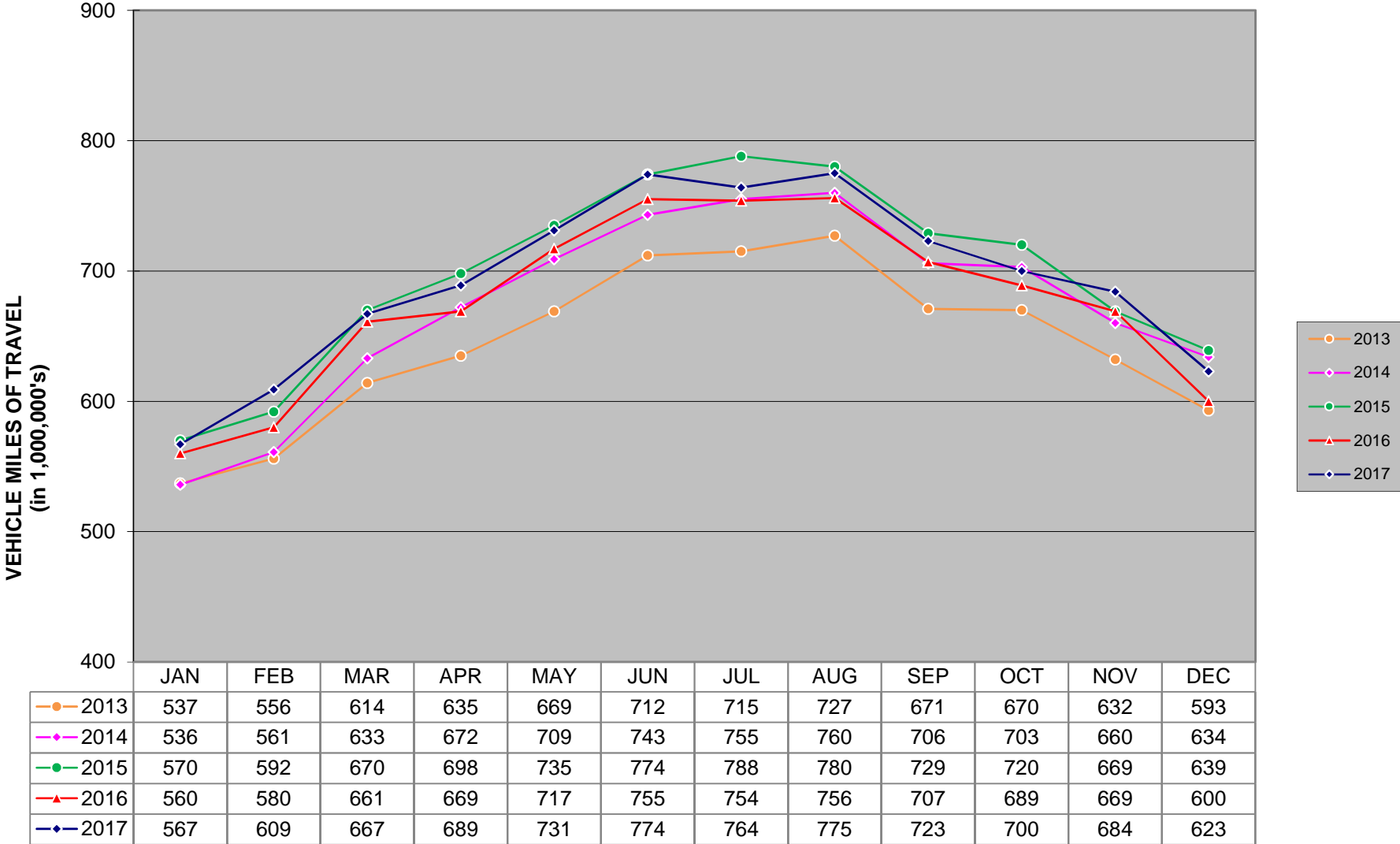
NOTE: Numbers in red denote estimated traffic due to road construction, inaccurate, or insufficient data. Monthly data for sites without comparable data are not include in TOTAL.

NOTE: Site 914-78 was Site 811-78 on IA 192 until IA 192 was removed from N.16th Street in 2016.

DECEMBER HISTORICAL VMT

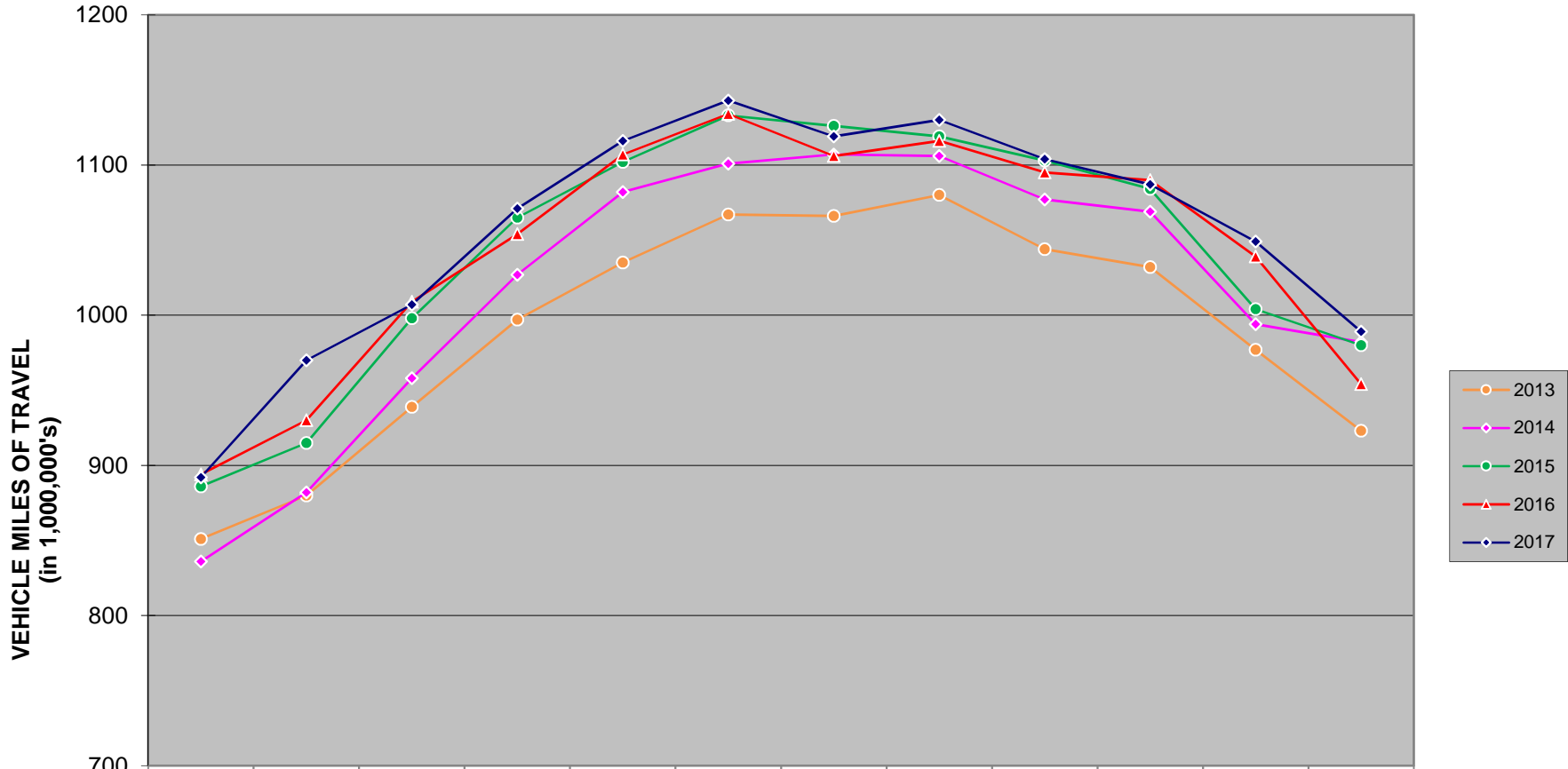


MONTHLY INTERSTATE VMT



There are 1,136 miles of Interstate in Iowa as of December 31, 2016.

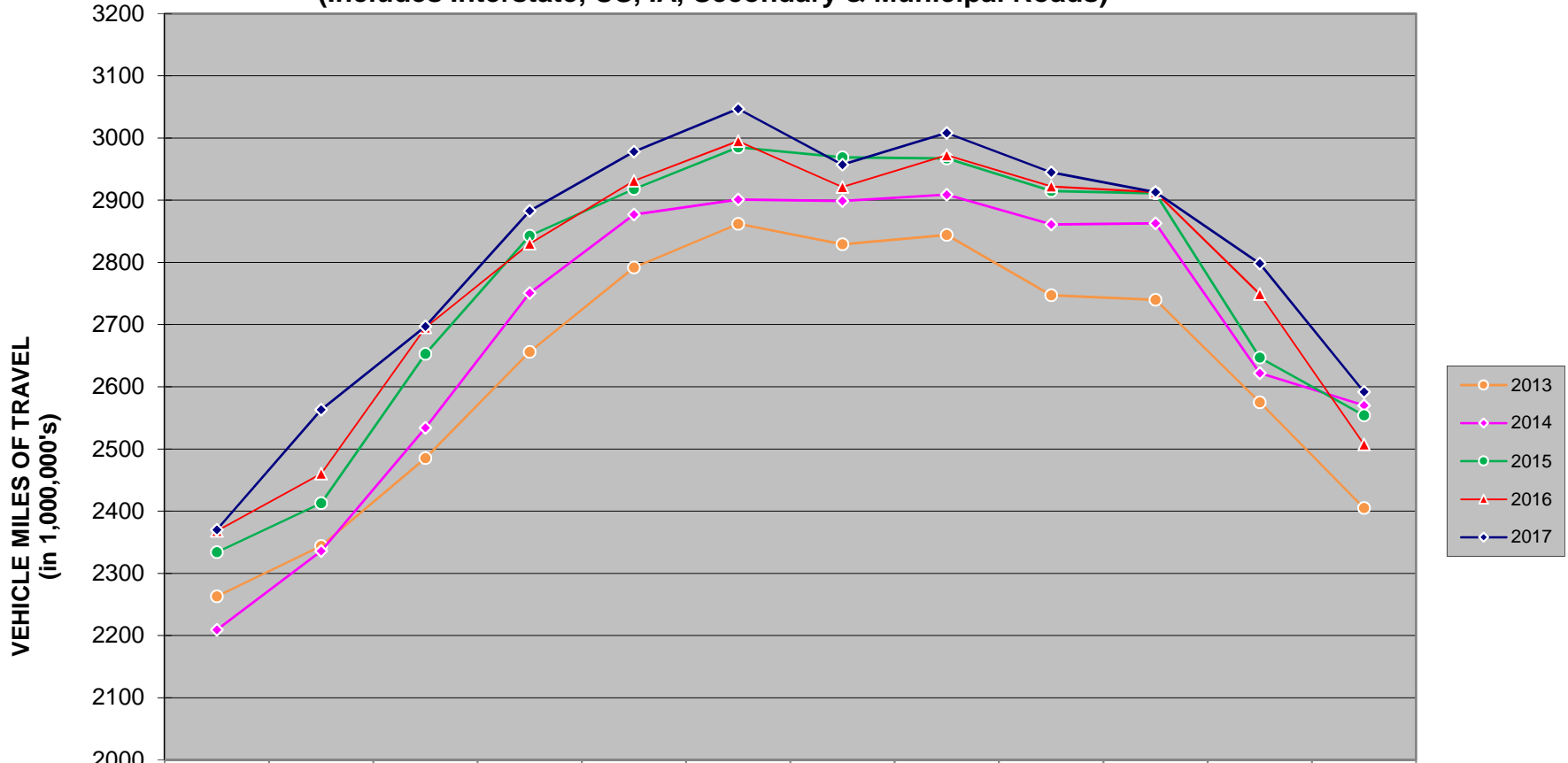
MONTHLY US & IA ROUTE VMT



	JAN	FEB	MAR	APR	MAY	JUN	JUL	AUG	SEP	OCT	NOV	DEC
—○— 2013	851	880	939	997	1035	1067	1066	1080	1044	1032	977	923
—◇— 2014	836	882	958	1027	1082	1101	1107	1106	1077	1069	994	982
—●— 2015	886	915	998	1065	1102	1133	1126	1119	1103	1084	1004	980
—▲— 2016	894	930	1009	1054	1107	1134	1106	1116	1095	1090	1039	954
—◆— 2017	892	970	1007	1071	1116	1143	1119	1130	1104	1087	1049	989

There are 8,438 miles of US and IA routes in Iowa as of December 31, 2016 .

MONTHLY TOTAL STATE VMT
 (Includes Interstate, US, IA, Secondary & Municipal Roads)



	JAN	FEB	MAR	APR	MAY	JUN	JUL	AUG	SEP	OCT	NOV	DEC
—○— 2013	2263	2344	2485	2656	2792	2862	2829	2844	2747	2740	2575	2405
—◇— 2014	2209	2336	2534	2751	2877	2901	2899	2909	2861	2863	2622	2570
—●— 2015	2334	2413	2653	2843	2918	2985	2969	2967	2915	2911	2647	2554
—▲— 2016	2368	2460	2695	2830	2931	2995	2921	2972	2922	2913	2749	2507
—◇— 2017	2370	2563	2697	2883	2978	3047	2957	3008	2945	2913	2798	2592