



**AUTOMATIC TRAFFIC RECORDER
MONTHLY REPORT
DECEMBER 2008**

PREPARED BY

OFFICE OF TRANSPORTATION DATA

IN COOPERATION WITH

UNITED STATES DEPARTMENT OF TRANSPORTATION

FEDERAL HIGHWAY ADMINISTRATION

TELEPHONE

515/239-1526

TABLE OF CONTENTS

Summary	3
Automatic Traffic Location Map	4
Monthly Traffic Variations	
2008 vs 2007	5
Comparison of Estimated Vehicle	
Miles by System	6
Vehicle Miles of Travel	7
Individual Recorder Data	8 - 23
Monthly Interstate & Primary VMT	24
Monthly Interstate VMT	25
Monthly US & IA Route VMT	26
Monthly Total State VMT	27

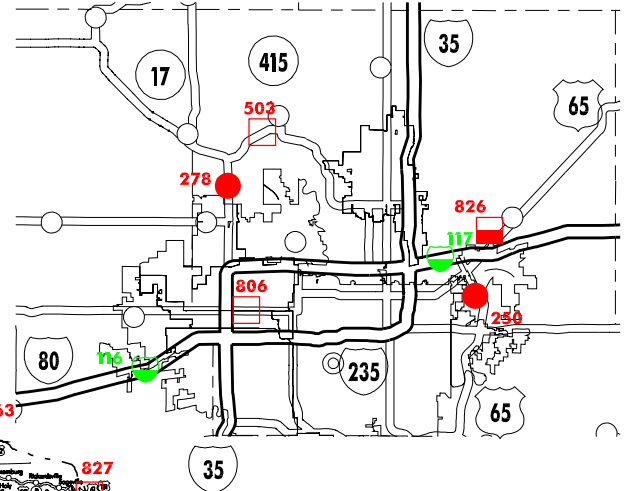
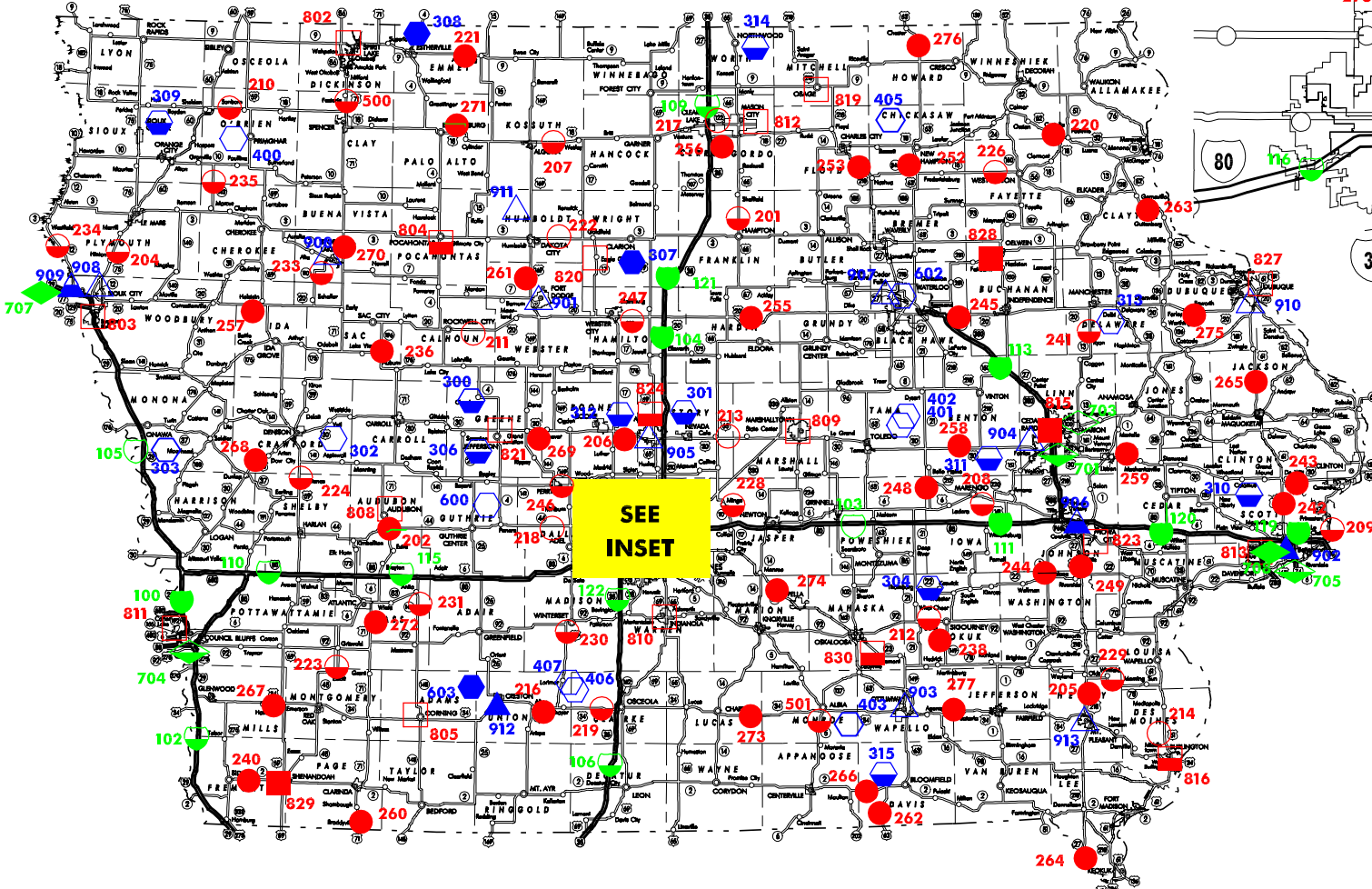
TRAFFIC VOLUME VARIATIONS ON THE IOWA ROAD SYSTEM

<u>DECEMBER</u> 2008	COMPARED TO	<u>DECEMBER</u> 2007	<u>YEAR</u> <u>TO DATE</u> 2008 / 2007
<u>RURAL</u>			
INTERSTATE		-0.6%	-3.2%
PRIMARY		NO CHANGE	-1.8%
SECONDARY		1.0%	-3.4%
SUBTOTAL		NO CHANGE	-2.7%
<u>MUNICIPAL</u>			
INTERSTATE		0.7%	-1.9%
PRIMARY		0.9%	-2.9%
STREETS		-1.1%	-2.0%
SUBTOTAL		NO CHANGE	-2.2%
STATE TOTAL		NO CHANGE	-2.5%

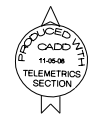
Data collected at the 144 continuous automatic traffic recorder locations shown on the following pages were utilized to compute the above percentages. The rural, municipal and state totals were weighted based on estimated vehicle miles of travel.

AUTOMATIC TRAFFIC RECORDER LOCATIONS

JANUARY 1, 2008



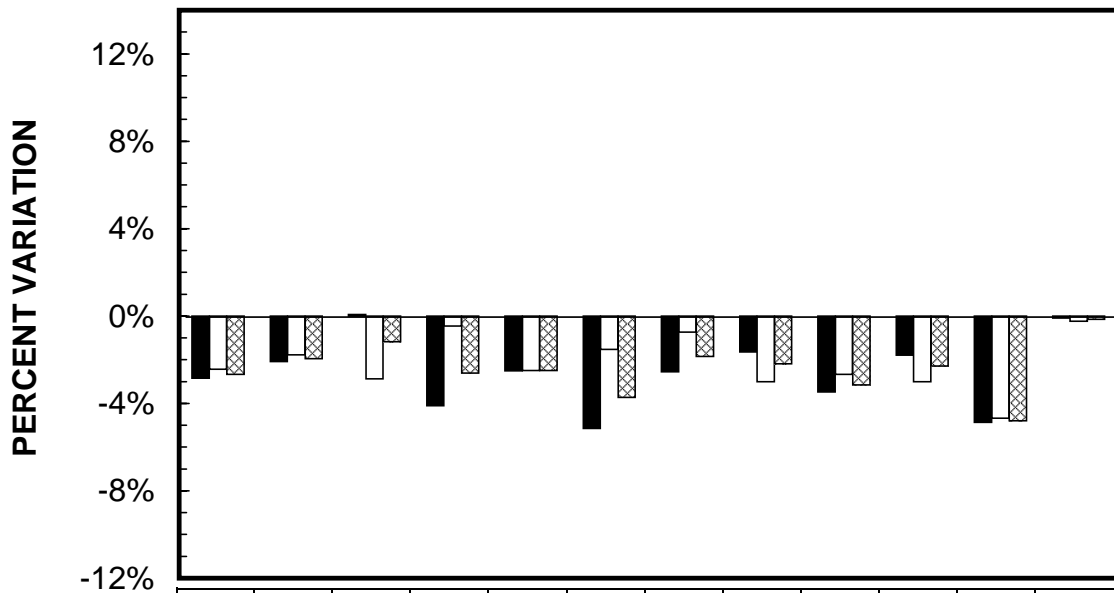
 Iowa Department of Transportation
Office of Transportation Data
Phone 515-239-1526



	13 CLASSES AND SPEED BY AXLE	3 CLASSES AND SPEED BY LENGTH	VOLUME ONLY
RURAL INTERSTATE		7	8 2
MUNICIPAL INTERSTATE		2	3 1
RURAL PRIMARY		42	23 6
MUNICIPAL PRIMARY		3	5 16
RURAL SECONDARY		3	10 12
MUNICIPAL STREETS		2	2 10
TOTAL	157	59	51 47

MONTHLY TRAFFIC VARIATIONS

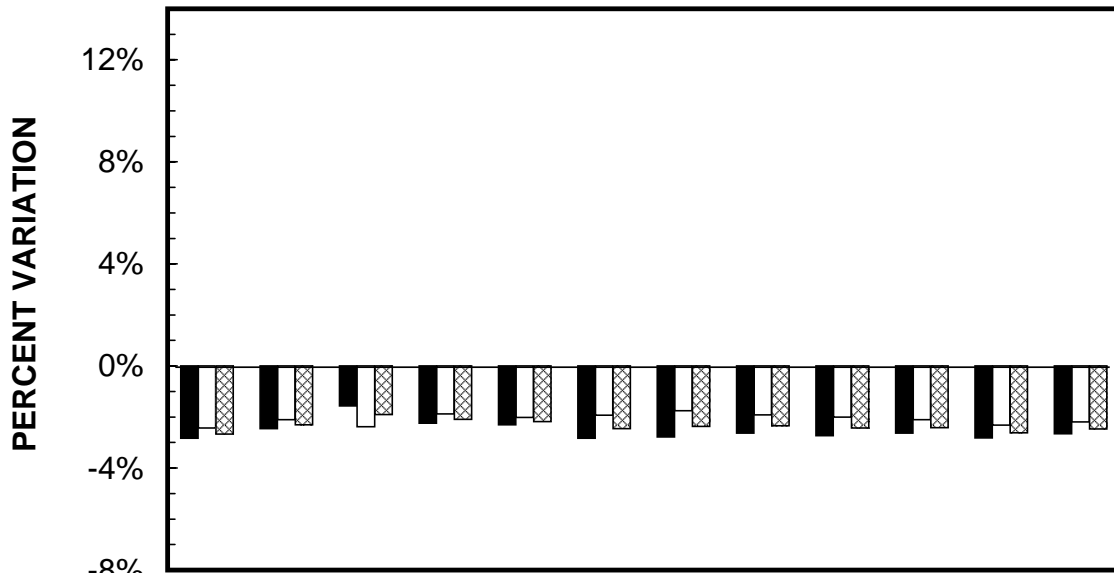
2008 vs 2007



	JAN	FEB	MAR	APR	MAY	JUN	JUL	AUG	SEP	OCT	NOV	DEC
■ RURAL	-2.84%	-2.08%	0.07%	-4.11%	-2.50%	-5.15%	-2.55%	-1.65%	-3.47%	-1.79%	-4.87%	-0.09%
□ MUNICIPAL	-2.43%	-1.77%	-2.88%	-0.46%	-2.49%	-1.52%	-0.73%	-3.00%	-2.68%	-3.01%	-4.67%	-0.24%
▨ STATE TOTAL	-2.67%	-1.95%	-1.18%	-2.62%	-2.50%	-3.72%	-1.84%	-2.19%	-3.16%	-2.29%	-4.79%	-0.15%

CUMULATIVE MONTHLY TRAFFIC VARIATIONS

2008 vs 2007



	JAN	FEB	MAR	APR	MAY	JUN	JUL	AUG	SEP	OCT	NOV	DEC
■ RURAL	-2.84%	-2.46%	-1.56%	-2.25%	-2.31%	-2.83%	-2.78%	-2.63%	-2.73%	-2.64%	-2.83%	-2.66%
□ MUNICIPAL	-2.43%	-2.10%	-2.38%	-1.88%	-2.01%	-1.93%	-1.76%	-1.92%	-2.00%	-2.10%	-2.32%	-2.19%
▨ STATE TOTAL	-2.67%	-2.31%	-1.91%	-2.10%	-2.19%	-2.46%	-2.37%	-2.34%	-2.43%	-2.42%	-2.62%	-2.47%

COMPARISON OF ESTIMATED VMT BY SYSTEM (IN 1,000,000's)

	JAN %dif	FEB %dif	MAR %dif	APR %dif	MAY %dif	JUN %dif	JUL %dif	AUG %dif	SEP %dif	OCT %dif	NOV %dif	DEC %dif	CUMULATIVE	%dif
RURAL INTERSTATE														
2008	367	376	421	403	460	460	498	498	421	433	390	324	5051	
2007	376 -2%	381 -1%	413 2%	426 -5%	471 -2%	490 -6%	517 -4%	515 -3%	442 -5%	446 -3%	414 -6%	326 -1%	5217	-3%
RURAL PRIMARY														
2008	597	600	676	668	728	694	716	701	694	679	611	504	7868	
2007	601 -1%	596 1%	675 0%	688 -3%	741 -2%	726 -4%	730 -2%	707 -1%	713 -3%	692 -2%	640 -5%	506 0%	8015	-2%
RURAL SECONDARY														
2008	371	387	426	446	527	468	469	471	498	475	426	296	5260	
2007	397 -7%	415 -7%	434 -2%	468 -5%	547 -4%	494 -5%	480 -2%	476 -1%	516 -3%	478 -1%	446 -4%	293 1%	5444	-3%
RURAL SUBTOTAL														
2008	1335	1363	1523	1517	1715	1622	1683	1670	1613	1587	1427	1124	18179	
2007	1374 -3%	1392 -2%	1522 0%	1582 -4%	1759 -3%	1710 -5%	1727 -3%	1698 -2%	1671 -3%	1616 -2%	1500 -5%	1125 0%	18676	-3%
MUNICIPAL INTERSTATE														
2008	198	199	218	208	216	215	209	219	214	209	188	147	2440	
2007	201 -1%	203 -2%	221 -1%	209 0%	222 -3%	221 -3%	209 0%	226 -3%	215 0%	214 -2%	200 -6%	146 1%	2487	-2%
MUNICIPAL PRIMARY														
2008	270	262	289	287	325	310	316	297	278	276	258	237	3405	
2007	279 -3%	267 -2%	300 -4%	293 -2%	337 -4%	323 -4%	325 -3%	309 -4%	284 -2%	283 -2%	270 -4%	235 1%	3505	-3%
MUNICIPAL STREETS														
2008	534	537	572	594	595	573	560	583	563	579	533	457	6680	
2007	547 -2%	546 -2%	590 -3%	592 0%	606 -2%	571 0%	559 0%	598 -3%	585 -4%	600 -4%	557 -4%	462 -1%	6813	-2%
MUNICIPAL SUBTOTAL														
2008	1002	998	1079	1089	1136	1098	1085	1099	1055	1064	979	841	12525	
2007	1027 -2%	1016 -2%	1111 -3%	1094 0%	1165 -2%	1115 -2%	1093 -1%	1133 -3%	1084 -3%	1097 -3%	1027 -5%	843 0%	12805	-2%
STATE TOTAL														
2008	2337	2361	2602	2606	2851	2720	2768	2769	2668	2651	2406	1965	30704	
2007	2401 -3%	2408 -2%	2633 -1%	2676 -3%	2924 -2%	2825 -4%	2820 -2%	2831 -2%	2755 -3%	2713 -2%	2527 -5%	1968 0%	31481	-2%

**IOWA DEPARTMENT OF TRANSPORTATION
ESTIMATED 2008 VEHICLE MILES OF TRAVEL**
(IN 1,000,000's)

MONTH	RURAL				MUNICIPAL				STATE TOTAL
	INTERSTATE	PRIMARY	SECONDARY	TOTAL	INTERSTATE	PRIMARY	SECONDARY	TOTAL	
JANUARY	367	597	371	1335	198	270	534	1002	2337
FEBRUARY	376	600	387	1363	199	262	537	998	2361
MARCH	421	676	426	1523	218	289	572	1079	2602
APRIL	403	668	446	1517	208	287	594	1089	2606
MAY	460	728	527	1715	216	325	595	1136	2851
JUNE	460	694	468	1622	215	310	573	1098	2720
JULY	498	716	469	1683	209	316	560	1085	2768
AUGUST	498	701	471	1670	219	297	583	1099	2769
SEPTEMBER	421	694	498	1613	214	278	563	1055	2668
OCTOBER	433	679	475	1587	209	276	579	1064	2651
NOVEMBER	390	611	426	1427	188	258	533	979	2406
DECEMBER	324	504	296	1124	147	237	457	841	1965
SUBTOTAL	5051	7868	5260	18179	2440	3405	6680	12525	30704

COMPARISON OF THE AVERAGE DAILY TRAFFIC FOR EACH MONTH OF 2008 AND 2007
AND ANNUAL DAILY AVERAGE

RURAL INTERSTATE

LOCATION AND STATION NUMBER		JAN.	FEB.	MARCH	APRIL	MAY	JUNE	JULY	AUG.	SEPT.	OCT.	NOV.	DEC.	ANNUAL
I 29 3.0 MI N OF S JCT I 680 HONEY CREEK 100-78	2008	17025	17609	19453	19568	*21743	22076	23099	22462	20766	20786	19927	18448	20246
	2007	17560	17766	19462	21283	22147	23954	24071	23586	21951	21298	21091	18228	21033
	%	-3.04	-.88	-.04	-8.05	-1.82	-7.84	-4.03	-4.76	-5.39	-2.40	-5.51	+1.20	-3.74
I 29 4.0 MI S OF US 34 PACIFIC JCT 102-65	2008	*9496	9938	*11186	11429	12703	13318	13505	12941	11964	*12357	*11958	*10732	11793
	2007	9427	9846	11191	12279	12796	14393	14453	14378	13058	12738	12686	10360	12300
	%	+7.73	+9.93	-.04	-6.92	-.72	-7.46	-6.55	-9.99	-8.37	-2.99	-5.73	+3.59	-4.12
I 80 5.0 MI E OF IA 146 GRINNELL 103-79	2008	*20579	*20356	*25374	*24915	*27862	*28545	*30270	*31718	*27792	*27165	*26039	*22811	26118
	2007	21030	20790	24756	26305	28437	30908	31041	32654	*28752	*27813	*27625	*22133	26853
	%	-2.14	-2.08	+2.49	-5.28	-2.02	-7.64	-2.48	-2.86	-3.33	-2.32	-5.74	+3.06	-2.73
I 35 3.0 MI N OF IA 175 JEWELL 104-40	2008	16040	16867	19852	19421	21409	22161	22730	23958	20216	20603	20762	17749	20147
	2007	16263	16318	18995	20845	21381	22938	23607	*23888	21730	21224	21802	18188	20598
	%	-1.37	+3.36	+4.51	-6.83	+1.13	-3.38	-3.71	+2.29	-6.96	-2.92	-4.77	-2.41	-2.18
I 29 3.8 MI S OF IA 175 ONAWA 105-67	2008	9523	10066	11527	11274	12982	13717	14496	14117	12292	12340	12047	10775	12096
	2007	9624	9675	11050	12058	12793	14642	15174	14773	13165	12754	12653	10663	12418
	%	-1.04	+4.04	+4.31	-6.50	+1.47	-6.31	-4.46	-4.44	-6.63	-3.24	-4.78	+1.05	-2.59
I 35 1.5 MI N OF IA 2 LEON 106-27	2008	10445	10367	13112	12439	13404	13693	14478	14339	12481	12826	13070	11813	12705
	2007	10379	10549	12874	13311	13794	14785	15073	14952	13573	13476	14228	11732	13227
	%	+6.3	-1.72	+1.84	-6.55	-2.82	-7.38	-3.94	-4.09	-8.04	-4.82	-8.13	+6.9	-3.94
I 35 3.0 MI N OF CO B20 HANLONTOWN 109-17	2008	14371	14662	17541	17139	18058	19155	19952	20914	18313	18586	18618	16230	17794
	2007	14710	14319	16881	18534	19107	21234	21911	22163	19639	19187	19233	16415	18611
	%	-2.30	+2.39	+3.90	-7.52	-5.49	-9.79	-8.94	-5.63	-6.75	-3.13	-3.19	-1.12	-4.38
I 80 1.5 MI W OF CO M16 SHELBY 110-78	2008	17521	17630	*20666	21001	23412	24303	25031	25901	23100	22439	20787	18934	21727
	2007	*18108	17599	20160	22144	23929	26704	27100	27434	24580	23401	22789	19078	22752
	%	-3.24	+1.17	+2.50	-5.16	-2.16	-8.99	-7.63	-5.58	-6.02	-4.11	-8.78	-.75	-4.50
I 80 2.0 MI E OF IA 149 WILLIAMSBURG 111-48	2008	24038	23325	*29439	28819	31826	32782	34254	35647	31177	30515	*29579	25220	29718
	2007	*25018	24876	29026	30812	33019	35488	35747	37447	33500	32279	32418	26271	31325
	%	-3.91	-6.23	+1.42	-6.46	-3.61	-7.62	-4.17	-4.80	-6.93	-5.46	-8.75	-4.00	-5.13
I 380 3.75 MI NW OF IA 150 BRANDON 113-06	2008	12525	*11915	*14750	14222	15184	*15075	16401	*16453	15597	15455	15491	12710	14648
	2007	12589	12166	14112	15072	15357	16117	16694	16822	15761	15962	16157	12908	14976
	%	-.50	-2.06	+4.52	-5.63	-1.12	-6.46	-1.75	-2.19	-1.04	-3.17	-4.12	-1.53	-2.19
I 80 2.0 MI E OF US 71 ATLANTIC 115-15	2008	14541	14717	18230	17915	20533	21512	23919	24503	20996	20303	18155	15885	19267
	2007	14852	14716	17274	19071	20958	23460	24033	24651	21530	20094	19614	16117	19697
	%	-2.09	+1.00	+5.53	-6.06	-2.02	-8.30	-.47	-.60	-2.48	+1.04	-7.43	-1.43	-2.18
I-80 0.8 MI W OF 74TH ST WAUKEE 116-25	2008	28209	28182	32347	33573	36750	37289	38319	39788	35461	35561	32813	29432	33977
	2007	28889	28487	31338	34575	37060	39796	40032	41215	36757	36097	35001	29527	34897
	%	-2.35	-1.07	+3.21	-2.89	-.83	-6.29	-4.27	-3.46	-3.52	-1.48	-6.25	-.32	-2.63
I 80 1.75 MI E OF E JCT I 35/80/235 ALTOONA 117-77	2008	58975	58693	65887	68380	71551	73590	74290	76327	68345	70100	66066	59597	67650
	2007	59656	59075	64712	69510	72698	76027	74704	78068	69581	70951	69406	58680	68589
	%	-1.14	-.64	+1.81	-1.62	-1.57	-3.20	-.55	-2.23	-1.77	-1.19	-4.81	+1.56	-1.36

COMPARISON OF THE AVERAGE DAILY TRAFFIC FOR EACH MONTH OF 2008 AND 2007
AND ANNUAL DAILY AVERAGE

RURAL INTERSTATE

(CONTINUED)

LOCATION AND STATION NUMBER		JAN.	FEB.	MARCH	APRIL	MAY	JUNE	JULY	AUG.	SEPT.	OCT.	NOV.	DEC.	ANNUAL
I-80 1.5 MI E OF MIDDLE RD LECLAIRE 119-82	2008	23017	22801	27180	26753	29326	30904	30727	*32933	27575	27801	26805	23410	27436
	2007	23806	23097	27040	28443	31034	32564	32380	33915	29201	28911	28695	24586	28639
	%	-3.31	-1.28	+5.1	-5.94	-5.50	-5.09	-5.10	-2.89	-5.56	-3.83	-6.58	-4.78	-4.20
I 80 2.5 MI E OF CO RD X40 TIPTON 120-16	2008	*25327	*24927	*29658	*29741	*32804	*35333	*36252	37692	32798	32480	31892	26507	31284
	2007	26851	26140	30469	32237	34238	36816	37178	38626	34682	35075	*33416	*27337	32755
	%	-5.67	-4.64	-2.66	-7.74	-4.18	-4.02	-2.49	-2.41	-5.43	-7.39	-4.56	-3.03	-4.49
I-35 2.0 MI N OF CO RD R75 DOWS 121-99	2008	10236	10518	12836	12475	14027	15325	15282	*16407	13764	13939	13734	11980	13376
	2007	10897	10909	12782	13986	14596	*16171	16405	16565	14343	13935	13948	11763	13858
	%	-6.06	-3.58	+4.2	-10.80	-3.89	-5.23	-6.84	-.95	-4.03	+0.2	-1.53	+1.84	-3.47
I 35 1.0 MI N OF IA 92 CUMMING 122-92	2008	18903	18925	21616	21466	22567	22657	*22852	22634	20790	21442	21237	19978	21255
	2007													
	%	+0.0	+0.0	+0.0	+0.0	+0.0	+0.0	+0.0	+0.0	+0.0	+0.0	+0.0	+0.0	+0.0
TOTAL	2008	311868	312573	369038	369064	403574	418778	433005	446100	392637	393256	377743	332233	379982
	2007	319659	316328	362122	390465	413344	445997	449603	461137	411803	405195	400762	333986	392528
	%	-2.43	-1.18	+1.90	-5.48	-2.36	-6.10	-3.69	-3.26	-4.65	-2.94	-5.74	-.52	-3.19

COMPARISON OF THE AVERAGE DAILY TRAFFIC FOR EACH MONTH OF 2008 AND 2007
AND ANNUAL DAILY AVERAGE

RURAL PRIMARY

LOCATION AND STATION NUMBER		JAN.	FEB.	MARCH	APRIL	MAY	JUNE	JULY	AUG.	SEPT.	OCT.	NOV.	DEC.	ANNUAL
US 65 2.7 MI N OF IA 3 HAMPTON 201-35	2008	2443	2466	2668	2845	2994	2934	2959	2886	2863	3013	2761	2503	2777
	2007	2471	2410	2713	2895	2968	2953	2987	2920	2949	3012	2854	2570	2808
	%	-1.13	+2.32	-1.65	-1.72	+ .87	- .64	- .93	-1.16	-2.91	+ .03	-3.25	-2.60	-1.10
US 71 2.0 MI N OF IA 44 HAMLIN 202-05	2008	2959	2993	3209	3379	3627	3700	3683	3527	3584	3491	3272	3082	3375
	2007	3018	2950	3189	3503	3797	3867	3893	3719	3616	3575	3559	2995	3473
	%	-1.95	+1.45	+ .62	-3.53	-4.47	-4.31	-5.39	-5.16	- .88	-2.34	-8.06	+2.90	-2.82
US 75 1.3 MI N OF CO C60 HINTON 204-75	2008	11185	11701	12181	12515	12789	12857	13103	12968	12426	12455	11957	11498	12302
	2007	10871	10722	11477	12348	12742	13132	13328	13278	12618	12656	12519	11479	12264
	%	+2.88	+9.13	+6.13	+1.35	+ .36	-2.09	-1.68	-2.33	-1.52	-1.58	-4.48	+ .16	+ .30
US 218 2.7 MI S OF IA 78 SWEDESBURG 205-44	2008	9614	9668	10922	11108	11386	11549	11815	12493	11505	11491	11176	*10034	11063
	2007	9587	9755	11058	11370	11700	12090	12042	12417	12036	11673	11708	10068	11292
	%	+ .28	- .89	-1.22	-2.30	-2.68	-4.47	-1.88	+ .61	-4.41	-1.55	-4.54	- .33	-2.02
US 30 AT BOONE/STORY CO LINE NAPIER 206-85	2008	11752	11909	12458	13145	13047	12779	13397	15142	14393	13868	12859	11728	13039
	2007	11493	11439	11853	12917	12966	13713	13552	13976	14413	13991	13402	11435	12929
	%	+2.25	+4.10	+5.10	+1.76	+ .62	-6.81	-1.14	+8.34	- .13	- .87	-4.05	+2.56	+ .85
US 18 2.2 MI E OF US 169 ALGONA 207-55	2008	2695	2764	2973	3201	3370	3382	4071	3481	3398	3370	3097	2915	3226
	2007	2893	2734	3076	3365	3602	4108	3974	3811	3804	3563	3386	3072	3449
	%	-6.84	+1.09	-3.34	-4.87	-6.44	-17.67	+2.44	-8.65	-10.67	-5.41	-8.53	-5.11	-6.46
US 6 3.0 MI E OF CO V66 MARENGO 208-48	2008	2661	2650	2949	3216	3426	*3254	3461	3448	3329	3301	2989	2683	3113
	2007	2743	2699	3090	3217	3423	3455	3520	3386	3277	3295	3092	2697	3157
	%	-2.98	-1.81	-4.56	- .03	+ .08	-5.81	-1.67	+1.83	+1.58	+ .18	-3.33	- .51	-1.39
US 67 1.5 MI S OF CO F45 PRINCETON 209-82	2008	3738	3643	4043	4280	4443	*4395	4410	4605	4437	4588	4044	3556	4181
	2007	3813	3702	4301	4495	4796	4787	4788	4806	4607	4600	4202	3576	4372
	%	-1.96	-1.59	-5.99	-4.78	-7.36	-8.18	-7.89	-4.18	-3.69	- .26	-3.76	- .55	-4.36
US 18 4.2 MI E OF IA 60 SHELDON 210-71	2008	3623	3654	3719	4124	4234	*4463	4423	4364	4629	4117	3742	3548	4053
	2007	3567	3445	3604	3999	4222	4449	4435	4473	4669	4245	4013	3681	4066
	%	+1.56	+6.06	+3.19	+3.12	+ .28	+ .31	- .27	-2.43	- .85	-3.01	-6.75	-3.61	- .31
US 20 2.8 MI E OF CO N57 ROCKWELL CITY 211-13	2008	2709	2705	2935	3066	3297	3243	3370	3390	3293	3203	3133	2700	3087
	2007	2697	2586	2842	3112	3308	3387	3373	3172	3289	3247	*3429	2899	3111
	%	+ .44	+4.60	+3.27	-1.47	- .33	-4.25	- .08	+6.87	+ .12	-1.35	-8.63	-6.86	- .77
IA 92 0.6 MI W OF CO V45 SIGOURNEY 212-54	2008	2212	2178	2511	2595	2831	*2659	2692	2855	2684	2679	2527	2228	2554
	2007	2331	2314	2700	2760	2945	2858	2802	2905	2832	2896	2716	2157	2684
	%	-5.10	-5.87	-7.00	-5.97	-3.87	-6.96	-3.92	-1.72	-5.22	-7.49	-6.95	+3.29	-4.84
US 30 1.8 MI E OF US 65 COLO 213-85	2008	4264	4238	4782	5027	5194	5139	5140	5527	5255	5212	4928	4190	4908
	2007	4361	4295	4707	5254	5370	5507	5336	5529	5568	5322	5238	4212	5058
	%	-2.22	-1.32	+1.59	-4.32	-3.27	-6.68	-3.67	- .03	-5.62	-2.06	-5.91	- .52	-2.96
US 61 3.8 MI N OF US 34 BURLINGTON 214-29	2008	6196	6203	7135	7439	7573	*7412	*7135	7166	7125	7231	6731	6099	6953
	2007	6242	6322	7083	7211	7426	7469	7276	7233	7068	7236	7000	6259	6985
	%	- .73	-1.88	+ .73	+3.16	+1.97	- .76	-1.93	- .92	+ .80	- .06	-3.84	-2.55	- .45

COMPARISON OF THE AVERAGE DAILY TRAFFIC FOR EACH MONTH OF 2008 AND 2007
AND ANNUAL DAILY AVERAGE

RURAL PRIMARY

(CONTINUED)

LOCATION AND STATION NUMBER		JAN.	FEB.	MARCH	APRIL	MAY	JUNE	JULY	AUG.	SEPT.	OCT.	NOV.	DEC.	ANNUAL
US 34/169 2.5 MI E OF W JCT US 169 AFTON 216-88	2008	3169	3199	3426	3559	3844	*3707	3735	3773	3684	3694	3454	3208	3537
	2007	3151	3208	3523	3686	3911	4045	3854	3893	3973	3881	3776	3151	3671
	%	+5.57	-2.28	-2.75	-3.44	-1.71	-8.35	-3.08	-3.08	-7.27	-4.81	-8.52	+1.80	-3.65
IA 122 2.5 MI E OF I 35 CLEAR LAKE 217-17	2008	12501	12945	13253	14127	14750	15196	15466	15319	14307	14477	13884	13858	14173
	2007	12785	12598	13563	14450	14929	15594	15656	15313	14666	14546	14105	14165	14364
	%	-2.22	+2.75	-2.28	-2.23	-1.19	-2.55	-1.21	+0.03	-2.44	-0.47	-1.56	-2.16	-1.32
IA 44 0.2 MI W OF US 169 ADEL 218-25	2008	2888	2809	3057	3360	3685	3806	3914	3852	3549	3578	3324	2931	3396
	2007	3065	2926	3113	3660	3854	3860	3945	3818	3501	3447	3281	2861	3444
	%	-5.77	-3.99	-1.79	-8.19	-4.38	-1.39	-0.78	+0.89	+1.37	+3.80	+1.31	+2.44	-1.39
US 34 1.0 MI W OF I 35 OSCEOLA 219-20	2008	4088	4115	4493	4721	5043	4933	4879	4774	4625	4557	4483	4191	4575
	2007	4181	4201	4579	4750	4985	5161	4938	4980	4983	4802	4758	4107	4702
	%	-2.22	-2.04	-1.87	-0.61	+1.16	-4.41	-1.19	-4.13	-7.18	-5.10	-5.77	+2.04	-2.70
US 52 1.0 MI NW OF US 18 POSTVILLE 220-03	2008	1335	1319	1465	1688	1745	1773	1673	1735	1675	1714	1521	1297	1578
	2007	1416	1335	1534	1752	1852	1877	1805	1767	1743	1784	1691	1341	1658
	%	-5.72	-1.19	-4.49	-3.65	-5.77	-5.54	-7.31	-1.81	-3.90	-3.92	-10.05	-3.28	-4.82
IA 9 2.5 MI W OF CO N52 ARMSTRONG 221-32	2008	1393	1388	1434	1588	1689	1696	1874	1765	1695	1709	1503	1380	1592
	2007	1432	1368	1514	1756	1845	1931	1960	1828	1785	1768	1624	1471	1690
	%	-2.72	+1.46	-5.28	-9.56	-8.45	-12.16	-4.38	-3.44	-5.04	-3.33	-7.45	-6.18	-5.79
IA 3 0.1 MI W OF CO P66 HUMBOLDT 222-46	2008	*1656	1663	1776	1880	1951	1952	1950	1879	1901	2051	1818	1658	1844
	2007	1671	1628	1761	1916	2064	2048	2099	2054	2009	2069	1958	1759	1919
	%	-0.89	+2.14	+0.85	-1.87	-5.47	-4.68	-7.09	-8.51	-5.37	-0.86	-7.15	-5.74	-3.90
IA 48 4.0 MI S OF IA 92 GRISWOLD 223-15	2008	1075	1065	1129	1241	1323	1274	1158	1196	1177	1196	1171	1051	1171
	2007	1092	1081	1107	1267	*1387	*1335	*1210	*1273	*1271	*1329	1258	1045	1221
	%	-1.55	-1.48	+1.98	-2.05	-4.61	-4.56	-4.29	-6.04	-7.39	-10.00	-6.91	+0.57	-4.09
US 59 0.5 MI S OF CO F16 DEFIANCE 224-83	2008	2212	2241	2446	2503	2694	2648	2679	2681	2561	2579	2493	2356	2507
	2007	2210	2192	2359	2606	2759	2857	2769	2719	2736	2647	2599	2290	2561
	%	+0.09	+2.23	+3.68	-3.95	-2.35	-7.31	-3.25	-1.39	-6.39	-2.56	-4.07	+2.88	-2.10
US 18 3.8 MI E OF CO W14 WEST UNION 226-33	2008	1868	1837	1993	2273	2384	2407	2424	2388	2401	2424	2120	1853	2197
	2007	1962	1868	2163	2338	2595	2629	2586	*2550	2619	2569	2283	1909	2339
	%	-4.79	-1.65	-7.85	-2.78	-8.13	-8.44	-6.26	-6.35	-8.32	-5.64	-7.13	-2.93	-6.07
IA 117 2.5 MI S OF US 65 MINGO 228-50	2008	842	780	920	1025	1135	1058	1053	1076	1058	1053	973	777	979
	2007	808	777	877	992	1097	1115	1040	1044	1094	1099	1061	831	986
	%	+4.20	+0.38	+4.90	+3.32	+3.46	-5.11	+1.25	+3.06	-3.29	-4.18	-8.29	-6.49	-0.70
IA 78 1.2 MI W OF CO X23 WINFIELD 229-44	2008	696	640	700	747	779	*805	731	*737	*761	*801	747	721	738
	2007	691	655	732	727	820	788	751	745	782	816	760	639	742
	%	+0.72	-2.29	-4.37	+2.75	-5.00	+2.15	-2.66	-1.07	-2.68	-1.83	-1.71	+12.83	-0.53
US 169 3.5 MI S OF S JCT IA 92 WINTERSET 230-61	2008	1322	1295	1424	1540	1785	1645	1712	1848	1731	1769	1592	1394	1588
	2007	1408	1333	1534	1670	1807	1767	1717	1692	1706	1712	1653	1325	1610
	%	-6.10	-2.85	-7.17	-7.78	-1.21	-6.90	-0.29	+9.21	+1.46	+3.32	-3.69	+5.20	-1.36

COMPARISON OF THE AVERAGE DAILY TRAFFIC FOR EACH MONTH OF 2008 AND 2007
AND ANNUAL DAILY AVERAGE

RURAL PRIMARY

(CONTINUED)

LOCATION AND STATION NUMBER		JAN.	FEB.	MARCH	APRIL	MAY	JUNE	JULY	AUG.	SEPT.	OCT.	NOV.	DEC.	ANNUAL
IA 148 9.3 MI N OF IA 92 ANITA 231-15	2008	647	617	676	750	847	828	797	802	783	858	775	680	755
	2007	658	613	663	797	*849	*863	*743	*780	*815	*881	819	652	761
	%	-1.67	+ .65	+1.96	-5.89	- .23	-4.05	+7.26	+2.82	-3.92	-2.61	-5.37	+4.29	- .78
IA 110 1.5 MI S OF CO C65 SCHALLER 233-11	2008	1192	1230	1245	1303	1379	1405	1430	1369	1312	1299	1220	1194	1298
	2007	1137	1149	1184	1287	1361	1424	1415	1318	1330	1365	1327	1231	1294
	%	+4.83	+7.04	+5.15	+1.24	+1.32	-1.33	+1.06	+3.86	-1.35	-4.83	-8.06	-3.00	+ .30
IA 12 2.5 MI N OF CO K18 AKRON 234-75	2008	1110	1171	1209	1313	1408	*1438	1383	1393	1386	1361	1287	1194	1304
	2007	1201	1187	1283	*1357	*1529	*1653	*1578	*1582	*1503	*1510	*1458	1147	1415
	%	-7.57	-1.34	-5.76	-3.24	-7.91	-13.00	-12.35	-11.94	-7.78	-9.86	-11.72	+4.09	-7.84
IA 143 3.4 MI S OF IA 10 MARCUS 235-71	2008	668	683	*712	756	804	813	782	824	862	820	761	700	765
	2007	703	679	720	778	823	852	841	872	895	891	856	721	802
	%	-4.97	+ .58	-1.11	-2.82	-2.30	-4.57	-7.01	-5.50	-3.68	-7.96	-11.09	-2.91	-4.61
IA 196 3.0 MI S OF US 20 SAC CITY 236-81	2008	1009	917	1021	1139	*1162	*1131	*1142	*1155	*1166	*1130	*1073	*1016	1088
	2007	907	849	935	1108	1182	1192	1163	1173	1196	1148	1173	959	1082
	%	+11.24	+8.00	+9.19	+2.79	-1.69	-5.11	-1.80	-1.53	-2.50	-1.56	-8.52	+5.94	+ .55
IA 149 2.1 MI N OF IA 78 MARTINSBURG 238-54	2008	989	922	1058	1090	1175	*1106	1109	1096	1111	1142	1094	963	1071
	2007	1033	1007	1152	1175	1228	*1181	*1158	1148	1184	1191	1175	961	1132
	%	-4.25	-8.44	-8.15	-7.23	-4.31	-6.35	-4.23	-4.52	-6.16	-4.11	-6.89	+ .20	-5.38
IA 2 3.0 MI E OF US 275 SIDNEY 240-36	2008	1736	1786	1863	1957	2072	*2152	*2037	*2055	*1893	*2047	1707	1668	1914
	2007	1728	1729	1921	2038	*2118	2097	2004	*2081	1941	2092	1936	1710	1949
	%	+ .46	+3.29	-3.01	-3.97	-2.17	+2.62	+1.64	-1.24	-2.47	-2.15	-11.82	-2.45	-1.79
IA 13 5.0 MI S OF US 20 RYAN 241-28	2008	3478	3311	3958	4001	4331	4209	4367	4523	4294	4535	*4017	3392	4034
	2007	3731	3430	4011	4317	4626	4817	4778	4632	4597	4548	4283	3600	4280
	%	-6.78	-3.46	-1.32	-7.31	-6.37	-12.62	-8.60	-2.35	-6.59	- .28	-6.21	-5.77	-5.74
US 61 3.8 MI N OF CO F41 ELDRIDGE 242-82	2008	14613	14200	15673	16095	16390	*16916	16966	16690	*16968	*16643	15737	*14391	15940
	2007	14602	14311	15825	16501	16509	16614	*16884	16985	17426	17763	16709	14441	16214
	%	+ .07	- .77	- .96	-2.46	- .72	+1.81	+ .48	-1.73	-2.62	-6.30	-5.81	- .34	-1.68
US 30 0.3 MI E OF Z24 DEWITT 243-23	2008	8758	8592	9425	9715	9636	9801	9776	9690	9672	9778	9362	8695	9408
	2007	8513	8348	9448	9604	9718	9741	9751	9927	9692	10145	9794	8704	9448
	%	+2.87	+2.92	- .24	+1.15	- .84	+ .61	+ .25	-2.38	- .20	-3.61	-4.41	- .10	- .42
IA 1 0.8 MI S OF CO RD F67 KALONA 244-52	2008	5092	4582	5476	6095	6312	6014	6103	6083	6196	6233	5866	5138	5765
	2007	5200	4967	5643	5845	5951	6021	5812	5577	5838	5886	5789	4970	5624
	%	-2.07	-7.75	-2.95	+4.27	+6.06	- .11	+5.00	+9.07	+6.13	+5.89	+1.33	+3.38	+2.50
US 20 1.5 MI E OF CO V62 JESUP 245-07	2008	9013	9150	10204	10412	10927	11076	11512	11601	11013	11529	10480	9473	10532
	2007	9014	8741	9846	10508	10832	11218	11732	11749	11400	11448	10909	9458	10571
	%	- .01	+4.67	+3.63	- .91	+ .87	-1.26	-1.87	-1.25	-3.39	+ .70	-3.93	+ .15	- .36
IA 141 1.0 MI E OF WILLIS AVE PERRY 246-25	2008	8394	8550	9051	9506	9935	9625	9591	9778	9480	9713	9421	8740	9315
	2007	8442	8442	8815	9629	9928	10158	9909	10197	9653	9854	9733	8617	9448
	%	- .56	+1.27	+2.67	-1.27	+ .07	-5.24	-3.20	-4.10	-1.79	-1.43	-3.20	+1.42	-1.40

COMPARISON OF THE AVERAGE DAILY TRAFFIC FOR EACH MONTH OF 2008 AND 2007
AND ANNUAL DAILY AVERAGE

RURAL PRIMARY

(CONTINUED)

LOCATION AND STATION NUMBER		JAN.	FEB.	MARCH	APRIL	MAY	JUNE	JULY	AUG.	SEPT.	OCT.	NOV.	DEC.	ANNUAL
US 20 3.0 MI E OF E JCT IA 17 WEBSTER CITY 247-40	2008	6713	6833	7584	7640	8339	8285	8615	8821	8084	8170	8279	6938	7858
	2007	6609	6470	7288	7931	8291	8524	8694	8932	8390	8338	8646	7237	7945
	%	+1.57	+5.61	+4.06	-3.66	+ .57	-2.80	- .90	-1.24	-3.64	-2.01	-4.24	-4.13	-1.09
IA 21 2.8 MI N OF US 6 BELLE PLAINE 248-48	2008	990	915	1076	1154	1290	*1211	1177	1218	1186	1196	1126	901	1120
	2007	973	960	1134	1252	1342	1277	1230	*1327	*1305	*1311	1260	956	1193
	%	+1.74	-4.68	-5.11	-7.82	-3.87	-5.16	-4.30	-8.21	-9.11	-8.77	-10.63	-5.75	-6.11
US 218 3.5 MI S OF IA 921 HILLS 249-52	2008	17138	17026	19000	18675	19249	19555	19759	20111	18899	19118	18624	17086	18686
	2007	17487	17204	19474	19956	20146	20606	20400	21095	20251	20274	20103	17337	19527
	%	-1.99	-1.03	-2.43	-6.41	-4.45	-5.10	-3.14	-4.66	-6.67	-5.70	-7.35	-1.44	-4.30
US 65 1.5 MI N OF IA 163 PLEASANT HILL 250-77	2008	20709	20499	22119	23852	25140	*25486	25441	28712	25448	25302	23667	20937	23942
	2007	21276	20993	22804	25372	26468	27238	26220	29254	24571	24697	24083	20023	24416
	%	-2.66	-2.35	-3.00	-5.99	-5.01	-6.43	-2.97	-1.85	+3.56	+2.44	-1.72	+4.56	-1.94
US 18/63 0.5 MI S OF CO RD B54 NEW HAMPTON 252-19	2008	4169	4191	4612	4790	4970	4866	*5225	5298	5058	5207	4883	4306	4797
	2007	4197	4011	4563	4800	5032	5210	5148	5289	5220	5149	4991	4367	4831
	%	- .66	+4.48	+1.07	- .20	-1.23	-6.60	+1.49	+ .17	-3.10	+1.12	-2.16	-1.39	- .70
US 218 3.5 MI S OF CO RD T64 CHARLES CITY 253-34	2008	6963	7048	8249	8289	9037	*9282	9854	9788	8902	8923	8776	7396	8542
	2007	7040	6910	7857	8670	9054	9693	9972	9811	9160	9086	8995	*7550	8649
	%	-1.09	+1.99	+4.98	-4.39	- .18	-4.24	-1.18	- .23	-2.81	-1.79	-2.43	-2.03	-1.23
US 20 1.0 MI E OF US 65 IOWA FALLS 255-42	2008	6550	6698	7800	7801	8548	8858	8945	9280	8516	8748	8964	7077	8148
	2007	6512	6447	7350	8080	8400	*8411	*8834	*8715	*8851	8650	9254	7185	8057
	%	+ .58	+3.89	+6.12	-3.45	+1.76	+5.31	+1.25	+6.48	-3.78	+1.13	-3.13	-1.50	+1.12
US 18 3.3 MI E OF I 35 MASON CITY 256-17	2008	*6484	*6323	6828	6930	7636	*7779	8401	8581	7622	7540	7645	6336	7342
	2007	6132	*6115	6581	7487	7763	8499	8763	8534	7906	7731	7912	*6670	7507
	%	+5.74	+3.40	+3.75	-7.43	-1.63	-8.47	-4.13	+ .55	-3.59	-2.47	-3.37	-5.00	-2.19
US 20 3.6 MI W OF W JCT US 59 HOLSTEIN 257-47	2008	2476	2595	2748	2860	3013	3052	3091	3085	3012	2970	2968	2711	2881
	2007	2534	2492	2621	2825	2799	2874	2803	2870	2888	2931	2986	2758	2781
	%	-2.28	+4.13	+4.84	+1.23	+7.64	+6.19	+10.27	+7.49	+4.29	+1.33	- .60	-1.70	+3.59
US 30 0.6 MI E OF CO RD V66 BLAIRSTOWN 258-06	2008	5311	4905	5789	5894	6289	6107	6245	6690	6382	6377	6136	5161	5940
	2007	5667	5521	6279	6738	6950	6946	6703	6723	6825	6811	6613	5318	6424
	%	-6.28	-11.15	-7.80	-12.52	-9.51	-12.07	-6.83	- .49	-6.49	-6.37	-7.21	-2.95	-7.53
US 30 3.5 MI E OF IA 1 LISBON 259-16	2008	4779	4513	5254	5515	5785	5788	5833	5834	5795	5786	5444	4800	5427
	2007					6003	5970	5859	5928	5809	5898	5656	4693	
	%	+ .00	+ .00	+ .00	+ .00	-3.63	-3.04	- .44	-1.58	- .24	-1.89	-3.74	+2.27	+ .00
US 71 0.6 MI S OF CO RD J64 BRADDYVILLE 260-73	2008	1960	2042	2263	2295	2364	2358	2375	2341	2236	2275	2276	2096	2240
	2007	1843	1898	2120	2318	2269	2300	2256	2253	2340	2289	2350	1953	2182
	%	+6.34	+7.58	+6.74	- .99	+4.18	+2.52	+5.27	+3.90	-4.44	- .61	-3.14	+7.32	+2.65
US 169 2.3 MI N OF CO RD D14 FORT DODGE 261-94	2008	4603	*4670	*5061	5256	5661	5556	5866	5864	5748	5743	5397	4901	5360
	2007	4854	5070	5241	5729	6159	6244	6435	*6328	6239	6071	*5898	*5137	5783
	%	-5.17	-7.88	-3.43	-8.25	-8.08	-11.01	-8.84	-7.33	-7.86	-5.40	-8.49	-4.59	-7.31

COMPARISON OF THE AVERAGE DAILY TRAFFIC FOR EACH MONTH OF 2008 AND 2007
AND ANNUAL DAILY AVERAGE

RURAL PRIMARY

(CONTINUED)

LOCATION AND STATION NUMBER		JAN.	FEB.	MARCH	APRIL	MAY	JUNE	JULY	AUG.	SEPT.	OCT.	NOV.	DEC.	ANNUAL
US 20 0.5 MI W OF CENTER AVE EPWORTH 275-31	2008										12593	11871	10616	
	2007													
	%	+0.00	+0.00	+0.00	+0.00	+0.00	+0.00	+0.00	+0.00	+0.00	+0.00	+0.00	+0.00	+0.00
US 63 1.5 MI N OF IA 9 LIME SPRINGS 276-45	2008					3020	2989	3149	3243	3030	2991	2843	2503	
	2007													
	%	+0.00	+0.00	+0.00	+0.00	+0.00	+0.00	+0.00	+0.00	+0.00	+0.00	+0.00	+0.00	+0.00
US 34 1.1 MI E OF IA 16 AGENCY 277-90	2008										7373	7503	7404	
	2007													
	%	+0.00	+0.00	+0.00	+0.00	+0.00	+0.00	+0.00	+0.00	+0.00	+0.00	+0.00	+0.00	+0.00
IA 141 0.5 MI N OF IA 44 GRIMES 278-77	2008					21254	21761	21495	22160	21144	21286	19503	18063	
	2007													
	%	+0.00	+0.00	+0.00	+0.00	+0.00	+0.00	+0.00	+0.00	+0.00	+0.00	+0.00	+0.00	+0.00
TOTAL	2008	263467	263075	288943	300318	315822	315830	322450	329257	313529	314628	298334	268680	299501
	2007	264906	261308	288606	309391	321500	330413	328844	331911	321938	320722	312681	269591	305126
	%	-0.54	+0.67	+0.11	-2.93	-1.76	-4.41	-1.94	-0.79	-2.61	-1.90	-4.58	-0.33	-1.84

COMPARISON OF THE AVERAGE DAILY TRAFFIC FOR EACH MONTH OF 2008 AND 2007
AND ANNUAL DAILY AVERAGE

RURAL COUNTY - PAVED

LOCATION AND STATION NUMBER		JAN.	FEB.	MARCH	APRIL	MAY	JUNE	JULY	AUG.	SEPT.	OCT.	NOV.	DEC.	ANNUAL
CO RD P14 2.7 MI N OF CO E33 CHURDAN 300-37	2008	181	170	206	242	268	251	274	*262	254	296	265	185	237
	2007	205	205	214	264	304	282	255	254	279	304	266	178	250
	%	-11.70	-17.07	-3.73	-8.33	-11.84	-10.99	+7.45	+3.14	-8.96	-2.63	-.37	+3.93	-5.20
CO RD S14 0.8 MI S OF CO E29 NEVADA 301-85	2008	802	743	883	1008	1154	1090	1123	1028	1064	1069	974	769	975
	2007	815	769	886	1012	1139	1142	1170	1057	1032	1086	1003	764	989
	%	-1.59	-3.38	-.33	-.39	+1.31	-4.55	-4.01	-2.74	+3.10	-1.56	-2.89	+6.65	-1.41
CO RD M55 0.2 MI N OF IA 141 MANILLA 302-24	2008	642	620	725	782	*861	*778	780	765	763	802	736	623	739
	2007	684	679	745	848	885	878	833	814	779	830	780	646	783
	%	-6.14	-8.68	-2.68	-7.78	-2.71	-11.38	-6.36	-6.01	-2.05	-3.37	-5.64	-3.56	-5.61
CO RD K45 2.25 MI S OF IA 175 ONAWA 303-67	2008	878	887	976	1094	1239	1310	1301	1127	1165	1191	1124	983	1106
	2007	874	844	948	1089	1201	1201	1192	1089	1148	1136	1099	887	1059
	%	+4.45	+5.09	+2.95	+4.45	+3.16	+9.07	+9.14	+3.48	+1.48	+4.84	+2.27	+10.82	+4.43
CO RD V45 3.5 MI N OF IA 92 SIGOURNEY 304-54	2008	505	454	620	665	712	686	659	*649	*660	*700	594	500	617
	2007	507	532	642	668	726	685	687	656	679	695	661	479	634
	%	-.39	-14.66	-3.42	-.44	-1.92	+1.14	-4.07	-1.06	-2.79	+7.1	-10.13	+4.38	-2.68
CO RD E53 1.75 MI E OF IA 25 SCRANTON 306-37	2008	417	388	494	555	630	532	552	539	576	619	534	406	520
	2007	427	409	455	545	557	576	533	541	572	631	557	385	515
	%	-2.34	-5.13	+8.57	+1.83	+13.10	-7.63	+3.56	-.36	+6.9	-1.90	-4.12	+5.45	+9.97
CO RD R38 2.2 MI N OF CO C54 CLARION 307-99	2008	1036	1011	1131	1279	1345	1345	1331	1361	1376	1510	1305	1036	1255
	2007	1162	1093	1160	1330	1445	*1391	1351	1343	1387	1497	1349	1017	1293
	%	-10.84	-7.50	-2.50	-3.83	-6.92	-3.30	-1.48	+1.34	-.79	+8.6	-3.26	+1.86	-2.93
CO RD N32 1.6 MI N OF IA 9 ESTHERVILLE 308-32	2008	261	*250	285	*334	*366	376	370	359	368	382	351	266	330
	2007	287	266	306	374	395	*382	361	356	380	392	351	252	341
	%	-9.05	-6.01	-6.86	-10.69	-7.34	-1.57	+2.49	+8.4	-3.15	-2.55	+1.00	+5.55	-3.22
CO RD K52 1.5 MI S OF US 18 HULL 309-84	2008	756	779	872	1004	1093	1069	1117	1020	1084	1233	1127	860	1001
	2007	842	812	847	1059	1149	*1060	*1026	*1003	1075	1164	1093	723	987
	%	-10.21	-4.06	+2.95	-5.19	-4.87	+8.4	+8.86	+1.69	+8.3	+5.92	+3.11	+18.94	+1.41
CO RD Y52 1.5 MI S OF US 30 GRAND MOUND 310-23	2008	398	350	471	500	562	521	513	489	491	552	525	387	479
	2007	427	383	463	522	604	534	530	500	557	577	540	414	504
	%	-6.79	-8.61	+1.72	-4.21	-6.95	-2.43	-3.20	-2.20	-11.84	-4.33	-2.77	-6.52	-4.96
CO RD W12 3.5 MI S OF US 30 WATKINS 311-06	2008	672	586	779	837	920	856	811	*893	945	886	816	647	804
	2007	698	684	795	863	955	1000	*927	958	955	915	853	636	853
	%	-3.72	-14.32	-2.01	-3.01	-3.66	-14.40	-12.51	-6.78	-1.04	-3.16	-4.33	+1.72	-5.74
CO RD E26 2.7 MI W OF CO RD R38 BOONE 312-08	2008	1026	940	1125	1278	1319	1306	1302	1359	1374	1378	1191	960	1213
	2007	1158	1086	1157	1389	1419	*1442	*1357	*1425	*1475	*1492	*1413	*1112	1327
	%	-11.39	-13.44	-2.76	-7.99	-7.04	-9.43	-4.05	-4.63	-6.84	-7.64	-15.71	-13.66	-8.59
CO RD D42 0.2 MI E OF IA 13 MANCHESTER 313-28	2008	503	461	579	686	812	851	837	860	687	748	625	499	679
	2007	545	500	606	717	838	892	868	810	761	694	654	499	698
	%	-7.70	-7.80	-4.45	-4.32	-3.10	-4.59	-3.57	+6.17	-9.72	+7.78	-4.43	+1.00	-2.72

COMPARISON OF THE AVERAGE DAILY TRAFFIC FOR EACH MONTH OF 2008 AND 2007
AND ANNUAL DAILY AVERAGE

RURAL COUNTY - PAVED

(CONTINUED)

LOCATION AND STATION NUMBER		JAN.	FEB.	MARCH	APRIL	MAY	JUNE	JULY	AUG.	SEPT.	OCT.	NOV.	DEC.	ANNUAL
CO RD 105 1.3 MI E OF CO S56 NORTHWOOD 314-98	2008	628	633	672	755	812	882	931	876	859	860	792	611	775
	2007	714	624	702	819	861	866	821	806	830	816	775	619	771
	%	-12.04	+1.44	-4.27	-7.81	-5.69	+1.84	+13.39	+8.68	+3.49	+5.39	+2.19	-1.29	+5.1
CO RD 5.5 MI W OF US 63 DRAKESVILLE 315-26	2008	524	507	611	683	823	753	764	738	*704	686	604	477	656
	2007	530	492	597	704	894	934	994	811	834	725	656	480	720
	%	-1.13	+3.04	+2.34	-2.98	-7.94	-19.37	-23.13	-9.00	-15.58	-5.37	-7.92	-.62	-8.88
SUBTOTAL	2008	9229	8779	10429	11702	12916	12606	12665	12325	12370	12912	11563	9209	11386
	2007	9875	9378	10523	12203	13372	13265	12905	12423	12743	12954	12050	9091	11724
	%	-6.54	-6.38	-.89	-4.10	-3.41	-4.96	-1.85	-.78	-2.92	-.32	-4.04	+1.29	-2.88
RURAL COUNTY - GRAVEL														
CO RD B30 0.5 MI E OF CO L48 PRIMGHAR 400-71	2008	17	14	16	21	24	20	21	20	24	41	27	15	21
	2007	16	16	21	26	35	28	29	30	31	48	29	18	27
	%	+6.25	-12.50	-23.80	-19.23	-31.42	-28.57	-27.58	-33.33	-22.58	-14.58	-6.89	-16.66	-22.22
LOCAL ROAD 1.75 MI N OF CO E36 CLUTIER 401-86	2008	27	21	15	21	41	45	31	38	29	49	41	21	31
	2007	28	30	33	28	39	43	37	36	41	46	40	22	35
	%	-3.57	-30.00	-54.54	-25.00	+5.12	+4.65	-16.21	+5.55	-29.26	+6.52	+2.50	-4.54	-11.42
LOCAL ROAD .75 MI E OF CO V18 CLUTIER 402-86	2008	43	24	19	31	46	41	41	46	41	63	68	34	41
	2007	38	45	48	47	61	58	50	47	58	64	56	34	50
	%	+13.15	-46.66	-60.41	-34.04	-24.59	-29.31	-18.00	-2.12	-29.31	-1.56	+21.42	+.00	-18.00
CO RD H47 5.0 MI SE OF US 34 ALBIA 403-68	2008	81	75	76	81	90	95	95	102	89	94	107	81	88
	2007	97	93	104	103	108	106	106	102	101	111	116	82	102
	%	-16.49	-19.35	-26.92	-21.35	-16.66	-10.37	-10.37	+.00	-11.88	-15.31	-7.75	-1.21	-13.72
LOCAL ROAD 2.5 MI N OF US 18 BASSETT 405-19	2008	38	36	38	46	65	49	48	47	47	50	52	39	46
	2007	49	43	42	50	53	55	48	54	70	78	76	51	55
	%	-22.44	-16.27	-9.52	-8.00	+22.64	-10.90	+.00	-12.96	-32.85	-35.89	-31.57	-23.52	-16.36
LOCAL ROAD 2.0 MI E OF US 169 LORIMOR 406-88	2008	56	50	48	56	66	69	64	56	53	53	56	58	57
	2007	*68	64	71	82	83	74	73	68	65	57	80	55	70
	%	-17.64	-21.87	-32.39	-31.70	-20.48	-6.75	-12.32	-17.64	-18.46	-7.01	-30.00	+5.45	-18.57
CO ROAD H23 2.0 MI E OF US 169 LORIMOR 407-88	2008	74	63	62	60	84	*78	*66	*62	63	*68	*67	*79	68
	2007	*69	65	74	80	80	81	77	74	73	73	93	77	76
	%	+7.24	-3.07	-16.21	-25.00	+5.00	-3.70	-14.28	-16.21	-13.69	-6.84	-27.95	+2.59	-10.52
SUBTOTAL	2008	336	283	274	316	416	397	366	371	346	418	418	327	352
	2007	365	356	393	416	459	445	420	411	439	477	490	339	415
	%	-7.94	-20.50	-30.27	-24.03	-9.36	-10.78	-12.85	-9.73	-21.18	-12.36	-14.69	-3.53	-15.18
TOTAL	2008	9565	9062	10703	12018	13332	13003	13031	12696	12716	13330	11981	9536	11738
	2007	10240	9734	10916	12619	13831	13710	13325	12834	13182	13431	12540	9430	12139
	%	-6.59	-6.90	-1.95	-4.76	-3.60	-5.15	-2.20	-1.07	-3.53	-.75	-4.45	+1.12	-3.30

COMPARISON OF THE AVERAGE DAILY TRAFFIC FOR EACH MONTH OF 2008 AND 2007
AND ANNUAL DAILY AVERAGE

MUNICIPAL INTERSTATE

LOCATION AND STATION NUMBER		JAN.	FEB.	MARCH	APRIL	MAY	JUNE	JULY	AUG.	SEPT.	OCT.	NOV.	DEC.	ANNUAL
I 380 BTWN WILSON AVE AND 33RD AVE CEDAR RAPIDS 701-57	2008	58968	57080	62576	65838	64620	*67233	68368	67373	67867	68181	62411	54986	63791
	2007	60913	59895	63987	66135	66609	67416	65194	69022	66708	69433	66086	54409	64650
	%	-3.19	-4.69	-2.20	-.44	-2.98	-.27	+4.86	-2.38	+1.73	-1.80	-5.56	+1.06	-1.32
I 380 AT J AVE BRIDGE S OF COLDSTREAM CEDAR RAPIDS 703-57	2008	75320	72194	81210	85871	84598	*84014	*82763	*83463	84448	86296	78991	71898	80922
	2007	78126	75939	81960	84721	85787	*86430	*84034	*88410	*83520	87306	83351	69820	82450
	%	-3.59	-4.93	-.91	+1.35	-1.38	-2.79	-1.51	-5.59	+1.11	-1.15	-5.23	+2.97	-1.85
I-29/80 0.6 MI W OF IA 192 COUNCIL BLUFFS 704-78	2008	70068	71551	74813	77768	78944	80525	82751	84067	79088	78215	73260	71017	76838
	2007	*70049	71696	75677	79417	82559	86661	85432	86605	82338	82452	79397	71919	79516
	%	+0.02	-.20	-1.14	-2.07	-4.37	-7.08	-3.13	-2.93	-3.94	-5.13	-7.72	-1.25	-3.36
I-74 0.6 MI S OF US 6 BETTENDORF 705-82	2008	45672	45098	48211	49590	*49818	*50748	51118	50263	48981	50338	46949	44339	48427
	2007	45663	44688	49683	49368	51017	50098	49871	50877	49043	51141	49702	45040	48849
	%	+0.01	+0.91	-2.96	+0.44	-2.35	+1.29	+2.50	-1.20	-.12	-1.57	-5.53	-1.55	-.86
I 29 AT IOWA/S. DAKOTA BORDER SIOUX CITY 707-97	2008	24753	25407	26245	27714	29106	30309	30827	30266	28978	29490	26758	25322	27931
	2007	24296	24378	25845	28128	29795	31236	31205	31278	28654	29264	27949	24821	28070
	%	+1.88	+4.22	+1.54	-1.47	-2.31	-2.96	-1.21	-3.23	+1.13	+0.77	-4.26	+2.01	-.49
I 280 0.3 MI SE OF IA 22 DAVENPORT 708-82	2008										20516	18113	16581	
	2007													
	%	+0.00	+0.00	+0.00	+0.00	+0.00	+0.00	+0.00	+0.00	+0.00	+0.00	+0.00	+0.00	+0.00
TOTAL	2008	274781	271330	293055	306781	307086	312829	315827	315432	309362	312520	288369	267562	297909
	2007	279047	276596	297152	307769	315767	321841	315736	326192	310263	319596	306485	266009	303535
	%	-1.52	-1.90	-1.37	-.32	-2.74	-2.80	+0.02	-3.29	-.29	-2.21	-5.91	+0.58	-1.85

COMPARISON OF THE AVERAGE DAILY TRAFFIC FOR EACH MONTH OF 2008 AND 2007
AND ANNUAL DAILY AVERAGE

MUNICIPAL PRIMARY

LOCATION AND STATION NUMBER		JAN.	FEB.	MARCH	APRIL	MAY	JUNE	JULY	AUG.	SEPT.	OCT.	NOV.	DEC.	ANNUAL
US 71 W OF MEMPHIS AVE SPIRIT LAKE 802-30	2008	10130	10146	10345	11381	12815	13297	14047	13275	11614	11057	10010	10243	11530
	2007	9942	9776	10389	11221	12858	13801	14217	13224	11965	11906	10832	10522	11721
	%	+1.89	+3.78	-.42	+1.42	-.33	-3.65	-1.19	+ .38	-2.93	-7.13	-7.58	-2.65	-1.62
IA 12/GORDON DR ON VIADUCT E OF COURT ST SIOUX CITY 803-97	2008	19689	21074	21450	*23558	*23334	*22560	*21744	*23201	*23244	*23773	*22259	*20850	22228
	2007	21582	22041	22980	24043	24174	23536	*22376	*24172	*23751	*24694	*23268	*20728	23112
	%	-8.77	-4.38	-6.65	-2.01	-3.47	-4.14	-2.82	-4.01	-2.13	-3.72	-4.33	+ .58	-3.82
IA 4 N OF 4TH AVE NW POCAHONTAS 804-76	2008	2557	2565	2789	3000	3246	3245	3261	3216	3120	2986	2790	2625	2950
	2007	2567	2529	2745	2965	3282	3382	3366	3343	3254	3136	2941	2636	3012
	%	-.38	+1.42	+1.60	+1.18	-1.09	-4.05	-3.11	-3.79	-4.11	-4.78	-5.13	-.41	-2.05
IA 148 S OF 11TH ST CORNING 805-02	2008	2473	2413	*2643	2881	3181	3207	3457	3227	2910	2797	2626	2419	2852
	2007	2533	2491	2670	3124	3498	3799	3674	3372	3257	2939	*2750	2452	3046
	%	-2.36	-3.13	-1.01	-7.77	-9.06	-15.58	-5.90	-4.30	-10.65	-4.83	-4.50	-1.34	-6.36
US 6/HICKMAN RD E OF SHASTA WINDSOR HEIGHTS 806-77	2008	17976	18159	18962	19940	19893	19738	19524	19509	18942	19232	18537	18455	19072
	2007	19246	19159	20119	20897	21331	20707	20300	20539	19703	20057	19342	18057	19954
	%	-6.59	-5.21	-5.75	-4.57	-6.74	-4.67	-3.82	-5.01	-3.86	-4.11	-4.16	+2.20	-4.42
US 71 S OF BIRCH ST AUDUBON 808-05	2008	4075	4139	4494	4722	4931	4915	4980	4822	4727	4945	4651	4461	4655
	2007	4136	4080	4502	4837	5088	5116	5006	4995	4763	4852	4839	4208	4701
	%	-1.47	+1.44	-.17	-2.37	-3.08	-3.92	-.51	-3.46	-.75	+1.91	-3.88	+6.01	-.97
IA 14 N OF WOODLAND ST MARSHALLTOWN 809-64	2008	5520	5343	6015	6561	6525	*6880	6474	6510	6488	6441	5879	5337	6164
	2007	5512	5491	6244	6630	6797	6908	6683	6713	6511	6620	6200	5349	6304
	%	+ .14	-2.69	-3.66	-1.04	-4.00	-.40	-3.12	-3.02	-.35	-2.70	-5.17	-.22	-2.22
IA 92 W OF 'N' ST INDIANOLA 810-91	2008	9478	9304	10152	11185	12051	11954	11955	11464	11214	11368	10434	9487	10837
	2007	9553	9363	10339	11390	12226	12036	11698	11361	11322	11255	10571	9185	10858
	%	-.78	-.63	-1.80	-1.79	-1.43	-.68	+2.19	+ .90	-.95	+1.00	-1.29	+3.28	-.19
IA 192 S OF AVE 'N' COUNCIL BLUFFS 811-78	2008	8201	8868	9420	9802	9686	9429	9363	9327	9280	9301	8617	8385	9139
	2007	8049	8224	8638	8936	9376	9585	9114	9285	9134	9138	8777	8046	8858
	%	+1.88	+7.83	+9.05	+9.69	+3.30	-1.62	+2.73	+ .45	+1.59	+1.78	-1.82	+4.21	+3.17
IA 122 W OF VIRGINIA AVE MASON CITY 812-17	2008	10958	11397	11398	12478	12516	11657	11745	*11520	*12164	*12267	12190	11610	11825
	2007	11102	11328	11754	12558	12692	12016	11919	12403	12427	12744	12130	11351	12035
	%	-1.29	+ .60	-3.02	-.63	-1.38	-2.98	-1.45	-7.11	-2.11	-3.74	+ .49	+2.28	-1.74
US 6 E OF PINE ST DAVENPORT 813-82	2008	19349	19907	21332	21600	22657	22456	22058	22739	22196	22713	21964	21264	21686
	2007	20239	20128	22138	22554	23234	23319	23292	22807	22124	22276	21618	20540	22022
	%	-4.39	-1.09	-3.64	-4.22	-2.48	-3.70	-5.29	-.29	+ .32	+1.96	+1.60	+3.52	-1.52
IA 922 BTWEEN WILEY BLVD & WESTDALE DR CEDAR RAPIDS 815-57	2008	8759	8662	9501	10178	10674	*10144	*9524	*9431	*9444	*9502	*9447	*9356	9551
	2007	8664	8588	9452	9547	10090	10140	9799	9827	9645	9867	9870	9302	9565
	%	+1.09	+ .86	+ .51	+6.60	+5.78	+ .03	-2.80	-4.02	-2.08	-3.69	-4.28	+ .58	-.14
US 34 W OF US 61 WEST BURLINGTON 816-29	2008	12372	12391	13013	13418	13221	*14553	*13480	13113	13091	13561	13048	11905	13097
	2007	12539	12841	13941	14036	14072	14286	13868	14521	13930	14142	13756	12063	13666
	%	-1.33	-3.50	-6.65	-4.40	-6.04	+1.86	-2.79	-9.69	-6.02	-4.10	-5.14	-1.30	-4.16

COMPARISON OF THE AVERAGE DAILY TRAFFIC FOR EACH MONTH OF 2008 AND 2007
AND ANNUAL DAILY AVERAGE

MUNICIPAL PRIMARY

(CONTINUED)

LOCATION AND STATION NUMBER		JAN.	FEB.	MARCH	APRIL	MAY	JUNE	JULY	AUG.	SEPT.	OCT.	NOV.	DEC.	ANNUAL
IA 9 EAST OF 14TH ST OSAGE 819-66	2008	4385	*4694	4944	5461	5931	5837	5749	5614	5391	5470	5056	4638	5264
	2007	4663	4641	5147	5558	5972	5985	5810	5604	5408	5559	5365	4785	5374
	%	-5.96	+1.14	-3.94	-1.74	-.68	-2.47	-1.04	+1.17	-1.31	-1.60	-5.75	-3.07	-2.04
IA 17 N OF NW 11TH ST EAGLE GROVE 820-99	2008	2538	2518	2636	2816	2879	2896	2848	2849	2784	2906	2654	2545	2739
	2007	2518	2440	2760	2829	2927	3078	3034	2974	2852	2906	2863	2635	2818
	%	+1.79	+3.19	-4.49	-.45	-1.63	-5.91	-6.13	-4.20	-2.38	+1.00	-7.30	-3.41	-2.80
IA 4 S OF EDGEWOOD AVE E JEFFERSON 821-37	2008	3551	3460	3873	4209	4477	4404	4163	4312	4440	4446	3908	3649	4074
	2007	3558	3431	3825	4217	4702	4428	4072	4383	4426	4499	4098	3594	4102
	%	-.19	+1.84	+1.25	-.18	-4.78	-.54	+2.23	-1.61	+1.31	-1.17	-4.63	+1.53	-.68
US 6 BETWEEN SYCAMORE & 1ST AVE IOWA CITY 823-52	2008	19524	19443	20377	21854	22059	*22241	21424	21486	21823	22091	20189	18852	20946
	2007	19793	19821	20847	21877	22560	22074	21411	22174	21389	22297	21179	18823	21187
	%	-1.35	-1.90	-2.25	-.10	-2.22	+1.75	+1.06	-3.10	+2.02	-.92	-4.67	+1.15	-1.13
US 69 BETWEEN 15TH & 16TH ST AMES 824-85	2008	17238	17471	16889	17920	17888	17443	17398	17596	17977	18496	16944	17356	17551
	2007	18184	18349	18728	20203	20871	20448	19346	20140	19252	19866	19087	18813	19440
	%	-5.20	-4.78	-9.81	-11.30	-14.29	-14.69	-10.06	-12.63	-6.62	-6.89	-11.22	-7.74	-9.71
US 65 1.5 MI NE OF I-80 BONDURANT 826-77	2008	10368	10289	11318	12043	12852	12298	12485	13402	12218	12184	11398	10278	11761
	2007	10665	10560	11576	12505	13071	13050	12555	13807	12369	12304	12086	10080	12052
	%	-2.78	-2.56	-2.22	-3.69	-1.67	-5.76	-.55	-2.93	-1.22	-.97	-5.69	+1.96	-2.41
US 61/151 W OF MISSISSIPPI R. DUBUQUE 827-31	2008	17219	*16675	18996	20744	*21142	*21865	*22053	*21844	*21113	21553	19571	17598	20031
	2007	*17519	*17203	*19346	*20295	22244	22810	22694	22761	21942	22372	20770	17109	20588
	%	-1.71	-3.06	-1.80	+2.21	-4.95	-4.14	-2.82	-4.02	-3.77	-3.66	-5.77	+2.85	-2.70
IA 150 S OF 12TH ST OELWEIN 828-33	2008	5367	5561	*6052	6284	7092	6688	6667	6643	6607	6701	6065	5816	6295
	2007	5586	5522	6064	6375	6831	7021	6680	6588	6565	6587	6156	5605	6298
	%	-3.92	+1.70	-.19	-1.42	+3.82	-4.74	-.19	+1.83	+1.63	+1.73	-1.47	+3.76	-.04
US 59 SOUTH OF 5TH AVENUE SHENANDOAH 829-73	2008	8320	8562	8771	9286	9752	9613	9431	9420	9485	9549	8735	8532	9121
	2007	8988	9177	9758	10017	10581	10663	10176	10046	9683	9621	9318	8354	9698
	%	-7.43	-6.70	-10.11	-7.29	-7.83	-9.84	-7.32	-6.23	-2.04	-.74	-6.25	+2.13	-5.94
IA 23 1 MI S OF IA 92 OSKALOOSA 830-62	2008	2622	2584	2863	3293	3136	3193	2998	2920	3111	3092	3089	*2522	2951
	2007	2827	2763	3064	3241	3238	3240	3189	3246	3232	3228	3086	2527	3073
	%	-7.25	-6.47	-6.56	+1.60	-3.15	-1.45	-5.98	-10.04	-3.74	-4.21	+1.09	-.19	-3.97
TOTAL	2008	222669	225625	238233	254614	261938	260513	256828	257440	253383	256431	240061	228183	246319
	2007	229965	229946	247026	259855	271715	271428	264279	268285	258904	262865	250902	226764	253484
	%	-3.17	-1.87	-3.55	-2.01	-3.59	-4.02	-2.81	-4.04	-2.13	-2.44	-4.32	+1.62	-2.82

COMPARISON OF THE AVERAGE DAILY TRAFFIC FOR EACH MONTH OF 2008 AND 2007
AND ANNUAL DAILY AVERAGE

MUNICIPAL STREETS

LOCATION AND STATION NUMBER		JAN.	FEB.	MARCH	APRIL	MAY	JUNE	JULY	AUG.	SEPT.	OCT.	NOV.	DEC.	ANNUAL
LAKE ST N OF 3RD ST STORM LAKE 900-11	2008	2543	2644	2689	2976	3146	3106	3140	2695	2509	2617	2607	2409	2756
	2007	2463	2420	2727	2875	3085	3127	3351	3053	3020	2994	2760	2596	2872
	%	+3.24	+9.25	-1.39	+3.51	+1.97	-.67	-6.29	-11.72	-16.92	-12.59	-5.54	-7.20	-4.03
2ND AVE N E OF 15TH ST FORT DODGE 901-94	2008	6211	6314	6505	7006	7102	7100	6915	7017	7069	7033	6568	6471	6775
	2007	6223	6164	6377	6774	7121	7105	6741	*7164	7489	6969	6693	6301	6760
	%	-.19	+2.43	+2.00	+3.42	-.26	-.07	+2.58	-2.05	-5.60	+9.91	-1.86	+2.69	+2.22
LOCUST ST E OF SPRING ST DAVENPORT 902-82	2008	20071	20587	21073	23432	22092	*22163	21729	21576	20457	21780	21514	19135	21300
	2007	20084	21395	21959	22121	22828	21981	21728	22350	22264	23022	21892	19386	21750
	%	-.06	-3.77	-4.03	+5.92	-3.22	+8.2	+0.00	-3.46	-8.11	-5.39	-1.72	-1.29	-2.06
JEFFERSON ST NE OF E 5TH ST OTTUMWA 903-90	2008	5854	5788	6115	6704	6766	6841	6295	6306	6489	6633	6014	5459	6272
	2007	6267	6318	6782	6891	7031	*6094	*6113	6536	6659	6868	6433	5483	6456
	%	-6.59	-8.38	-9.83	-2.71	-3.76	+12.25	+2.97	-3.51	-2.55	-3.42	-6.51	-.43	-2.85
JOHNSON AVE W OF JANICE DR CEDAR RAPIDS 904-57	2008	9009	9099	9610	10116	10582	*10924	10676	10533	10196	10231	9581	9446	10000
	2007	9149	9330	9827	10219	10814	10578	10282	10475	9984	9989	9592	9128	9947
	%	-1.53	-2.47	-2.20	-1.00	-2.14	+3.27	+3.83	+5.55	+2.12	+2.42	-.11	+3.48	+5.53
NORTHWESTERN AVE N OF 20TH ST AMES 905-85	2008	2071	2145	2075	2386	2363	2070	2004	2242	2470	2428	2125	2052	2202
	2007	2138	2145	2144	2524	2529	2311	2135	2343	2441	2523	2351	2075	2304
	%	-3.13	+0.00	-3.21	-5.46	-6.56	-10.42	-6.13	-4.31	+1.18	-3.76	-9.61	-1.10	-4.42
DUBUQUE ST S OF DAVENPORT ST IOWA CITY 906-52	2008	12871	14376	14425	16207	15737	*15589	*14995	15259	15475	15360	13815	12157	14688
	2007	13747	14587	14845	16605	15934	15524	15033	16027	16126	16575	14826	12940	15230
	%	-6.37	-1.44	-2.82	-2.39	-1.23	+4.1	-.25	-4.79	-4.03	-7.33	-6.81	-6.05	-3.55
COLLEGE ST S OF 23RD ST CEDAR FALLS 907-07	2008	*7892	*8005											
	2007	8086	8145	7690	9189	7176	5769	5005	6857	7336	*9018	*8508	*6555	7444
	%	-2.39	-1.71	+0.00	+0.00	+0.00	+0.00	+0.00	+0.00	+0.00	+0.00	+0.00	+0.00	+0.00
LINDENWOOD ST S OF 35TH ST SIOUX CITY 908-97	2008	841	838	923	1014	1129	1113	1052	1022	1005	913	922	859	969
	2007	878	826	907	1034	1155	1117	1070	*1103	1032	1056	998	926	1008
	%	-4.21	+1.45	+1.76	-1.93	-2.25	-.35	-1.68	-7.34	-2.61	-13.54	-7.61	-7.23	-3.86
HAMILTON BLVD N OF CLIFTON AVE SIOUX CITY 909-97	2008	12621	12816	13242	14156	14939	14305	14114	14434	14434	14743	13501	12954	13854
	2007	13256	12995	13815	14770	15487	14877	*14347	*14818	*14679	*15287	*14444	12999	14314
	%	-4.79	-1.37	-4.14	-4.15	-3.53	-3.84	-1.62	-2.59	-1.66	-3.55	-6.52	-.34	-3.21
GRANDVIEW AVE SE OF PLYMOUTH CT DUBUQUE 910-31	2008	7605	7354	7952	8869	9529	*9460	9052	8976	8998	9084	8359	7915	8596
	2007	7853	7590	8434	9121	9704	9561	9119	9091	9153	9170	8650	7907	8779
	%	-3.15	-3.10	-5.71	-2.76	-1.80	-1.05	-.73	-1.26	-1.69	-.93	-3.36	+1.10	-2.08
HUMBOLDT AVE S OF 4TH ST BODE 911-46	2008	684	666	781	837	864	808	785	771	814	863	784	656	776
	2007	681	657	719	776	862	784	826	823	869	911	862	668	786
	%	+4.4	+1.36	+8.62	+7.86	+2.3	+3.06	-4.96	-6.31	-6.32	-5.26	-9.04	-1.79	-1.27
ELM ST N OF LUCAS ST CRESTON 912-88	2008	3422	3446	3735	3929	4137	4182	3959	3925	3890	3858	3533	3564	3798
	2007	3594	3651	3930	4073	4182	3885	3579	3607	3601	3479	3519	3423	3710
	%	-4.78	-5.61	-4.96	-3.53	-1.07	+7.64	+10.61	+8.81	+8.02	+10.89	+1.39	+4.11	+2.37

COMPARISON OF THE AVERAGE DAILY TRAFFIC FOR EACH MONTH OF 2008 AND 2007
AND ANNUAL DAILY AVERAGE

MUNICIPAL STREETS

(CONTINUED)

LOCATION AND STATION NUMBER		JAN.	FEB.	MARCH	APRIL	MAY	JUNE	JULY	AUG.	SEPT.	OCT.	NOV.	DEC.	ANNUAL
WASHINGTON ST EAST OF HARRISON ST MOUNT PLEASANT 913-44	2008	9860	10019	10490	10990	11291	11233	10931	11727	10502	10577	9493	9374	10540
	2007	*9631	*9687	*10237	*10422	*10948	11477	11211	11774	11194	11086	10342	9577	10632
	%	+2.37	+3.42	+2.47	+5.45	+3.13	-2.12	-2.49	-.39	-6.18	-4.59	-8.20	-2.11	-.86
TOTAL	2008	93663	96092	99615	108622	109677	108894	105647	106483	104308	106120	98816	92451	102526
	2007	95964	97765	102703	108205	111680	108421	105535	109164	108511	109929	103362	93409	104548
	%	-2.39	-1.71	-3.00	+.38	-1.79	+.43	+.10	-2.45	-3.87	-3.46	-4.39	-1.02	-1.93

COMPARISON OF THE AVERAGE DAILY TRAFFIC FOR EACH MONTH OF 2008 AND 2007
AND ANNUAL DAILY AVERAGE

RECREATIONAL PRIMARY

LOCATION AND STATION NUMBER		JAN.	FEB.	MARCH	APRIL	MAY	JUNE	JULY	AUG.	SEPT.	OCT.	NOV.	DEC.	ANNUAL
US 71 0.1 MI S OF CO RD B14 FOSTORIA 500-21	2008	6660	6592	6948	7666	8510	9234	9821	9389	9107	7514	6720	6366	7877
	2007	6791	6464	7152	7948	9342	10228	10533	9762	9760	7992	7467	6724	8346
	%	-1.92	+1.98	-2.85	-3.54	-8.90	-9.71	-6.75	-3.82	-6.69	-5.98	-10.00	-5.32	-5.61
IA 5 3.8 MI S OF US 34 MORAVIA 501-68	2008	3125	3043	3402	3594	4066	4014	4298	4130	3908	3835	3590	3299	3692
	2007	3069	3060	3460	3764	4239	4368	4428	4047	4054	3738	3650	3068	3745
	%	+1.82	-.55	-1.67	-4.51	-4.08	-8.10	-2.93	+2.05	-3.60	+2.59	-1.64	+7.52	-1.41
IA 415 0.5 MI W OF NW POLK CITY RD, POLK CITY 503-77	2008	4037	3953	4394	5045	5937	*6396	6394	6394	6217	5723	4812	4219	5293
	2007	4099	3990	4486	5352	5990	6280	6284	5949	5750	5256	4664	3850	5162
	%	-1.51	-.92	-2.05	-5.73	-.88	+1.84	+1.75	+7.48	+8.12	+8.88	+3.17	+9.58	+2.53
SUBTOTAL	2008	13822	13588	14744	16305	18513	19644	20513	19913	19232	17072	15122	13884	16862
	2007	13959	13514	15098	17064	19571	20876	21245	19758	19564	16986	15781	13642	17253
	%	-.98	+.54	-2.34	-4.44	-5.40	-5.90	-3.44	+.78	-1.69	+.50	-4.17	+1.77	-2.26

RECREATIONAL SECONDARY

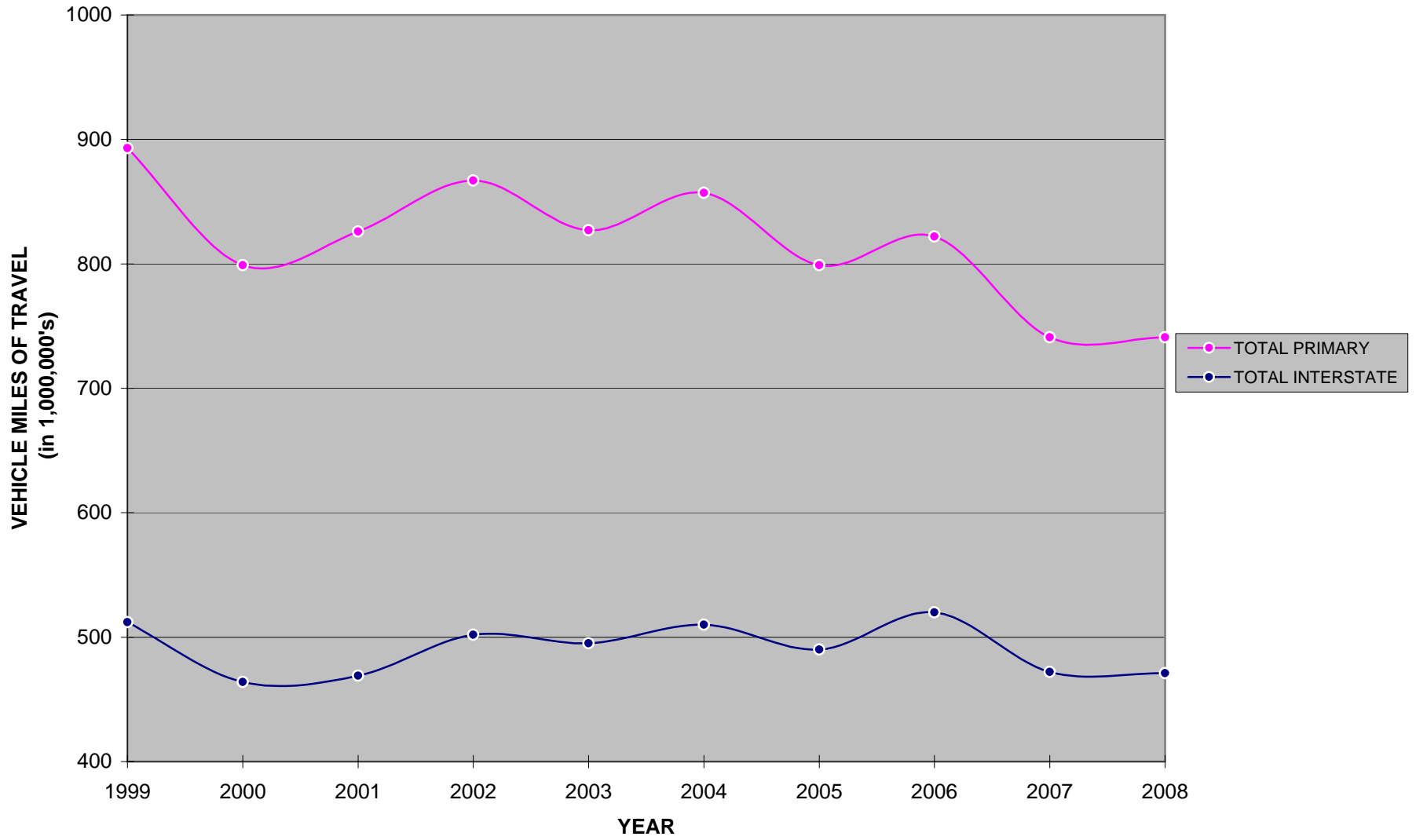
CO RD F25 0.1 MI W OF CO P18 SPRINGBROOK 600-39	2008	124	141	158	192	283	261	305	255	214	223	184	127	205
	2007	115	127	152	214	311	324	365	289	271	228	196	129	226
	%	+7.82	+11.02	+3.94	-10.28	-9.00	-19.44	-16.43	-11.76	-21.03	-2.19	-6.12	-1.55	-9.29
ENTRANCE TO GEORGE WYTH STATE PARK WATERLOO 602-07	2008	248	238	372	642	1113	*1385	*1224	838	691	444	303	228	643
	2007	303	258	537	920	1428	1621	1585	882	930	568	309	248	799
	%	-18.15	-7.75	-30.72	-30.21	-22.05	-14.55	-22.77	-4.98	-25.69	-21.83	-1.94	-8.06	-19.52
ENTRANCE TO GREEN VALLEY STATE PARK 603-88	2008	108	107	193	243	507	564	497	386	257	155	*159	106	273
	2007	142	141	239	304	611	644	673	420	427	220	143	110	339
	%	-23.94	-24.11	-19.24	-20.06	-17.02	-12.42	-26.15	-8.09	-39.81	-29.54	+11.18	-3.63	-19.46
SUBTOTAL	2008	480	486	723	1077	1903	2210	2026	1479	1162	822	646	461	1121
	2007	560	526	928	1438	2350	2589	2623	1591	1628	1016	648	487	1364
	%	-14.28	-7.60	-22.09	-25.10	-19.02	-14.63	-22.76	-7.03	-28.62	-19.09	-.30	-5.33	-17.81
TOTAL	2008	14302	14074	15467	17382	20416	21854	22539	21392	20394	17894	15768	14345	17983
	2007	14519	14040	16026	18502	21921	23465	23868	21349	21192	18002	16429	14129	18617
	%	-1.49	+.24	-3.48	-6.05	-6.86	-6.86	-5.56	+.20	-3.76	-.59	-4.02	+1.52	-3.40

NOTES:

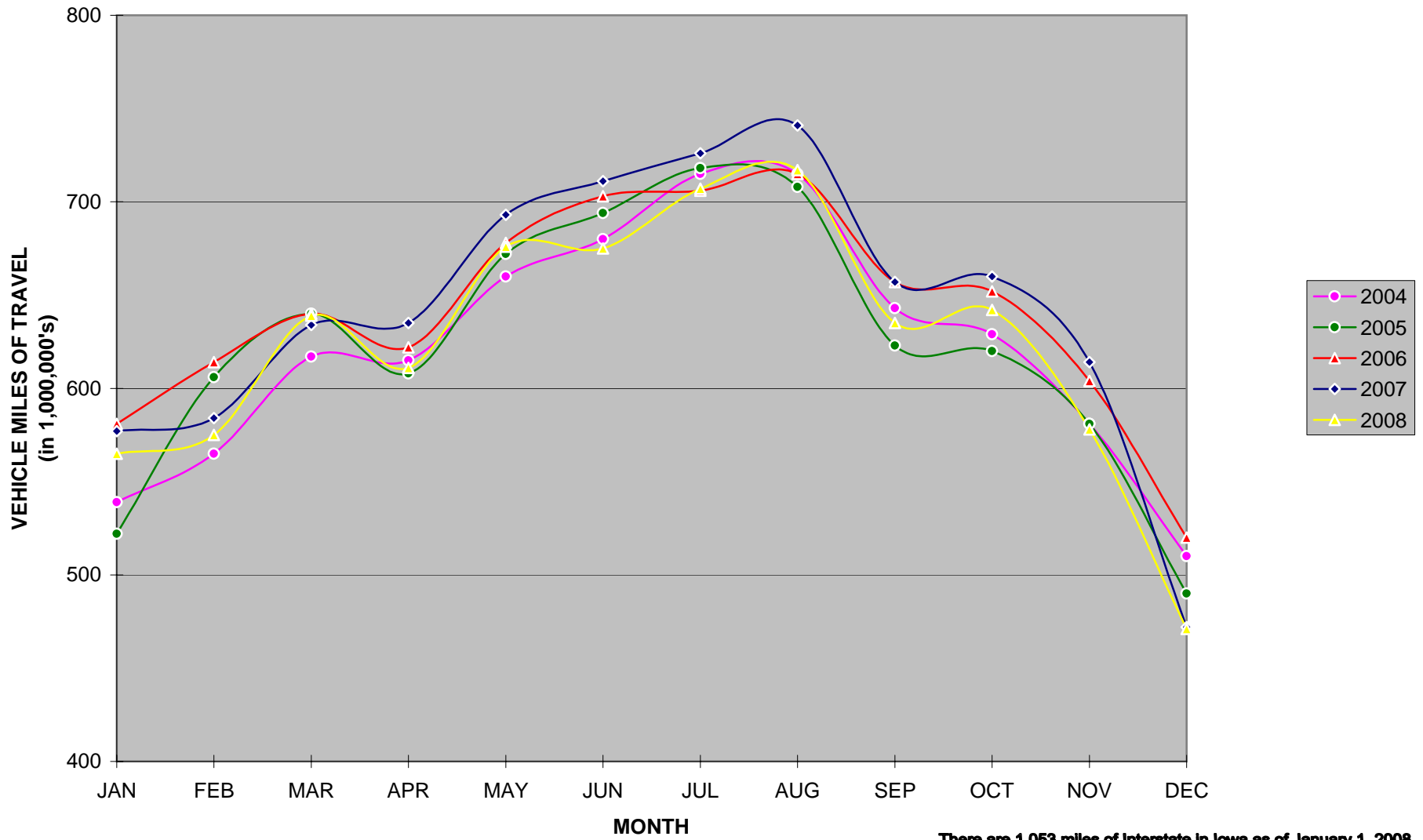
* TRAFFIC ESTIMATED DUE TO ROAD CONSTRUCTION IN AREA, INSUFFICIENT OR INACCURATE DATA.

MONTHS WITHOUT COMPARABLE DATA NOT INCLUDED IN TOTALS.

DECEMBER HISTORICAL VMT

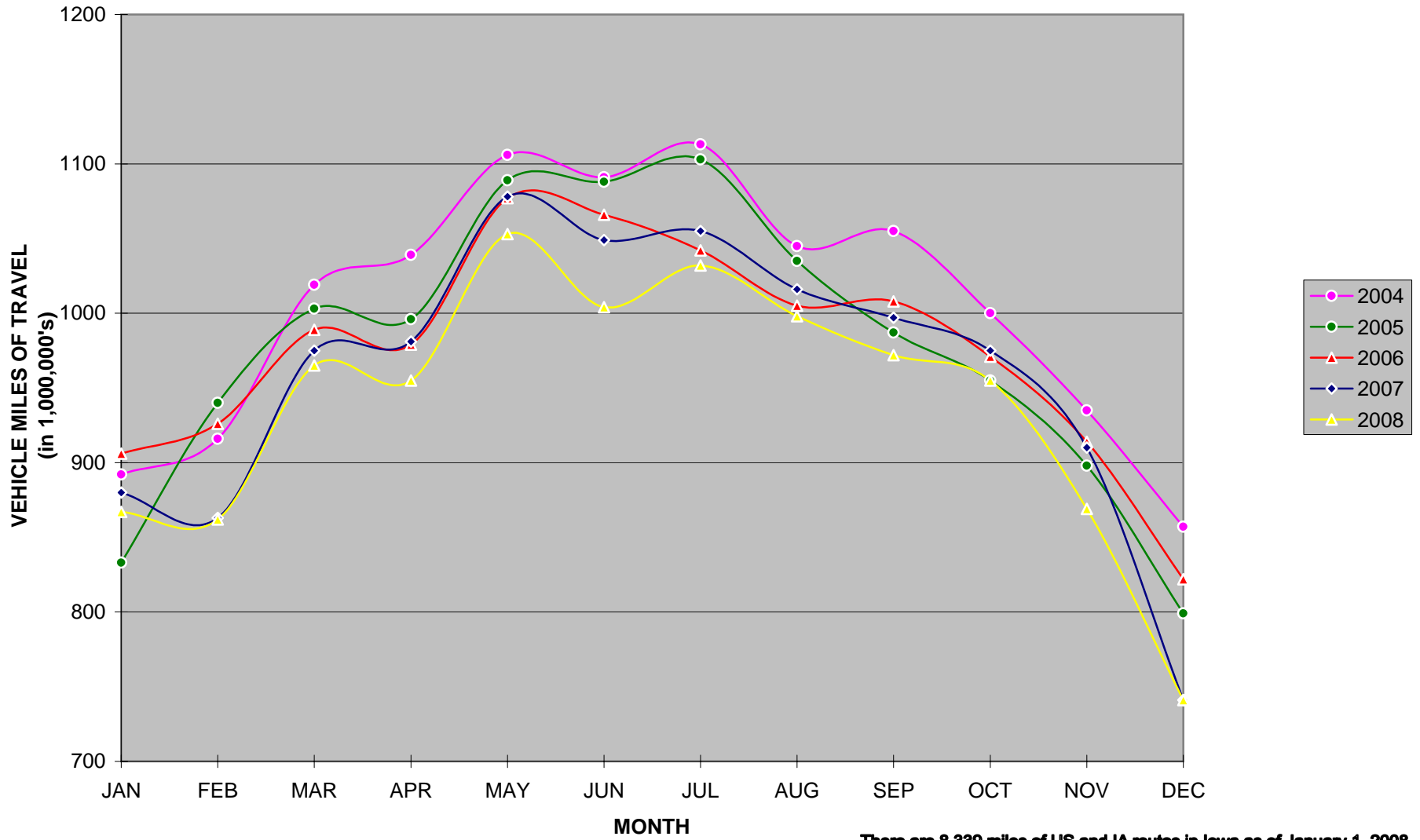


MONTHLY INTERSTATE TRAVEL



There are 1,053 miles of Interstate in Iowa as of January 1, 2008.

MONTHLY US & IA ROUTE VMT



There are 8,339 miles of US and IA routes in Iowa as of January 1, 2008.

MONTHLY TOTAL STATE VMT (Includes Interstate, US, IA, Secondary & Municipal Roads)

