



**AUTOMATIC TRAFFIC RECORDER
MONTHLY REPORT
DECEMBER 2009**

PREPARED BY

OFFICE OF TRANSPORTATION DATA

IN COOPERATION WITH

UNITED STATES DEPARTMENT OF TRANSPORTATION

FEDERAL HIGHWAY ADMINISTRATION

TELEPHONE

515/239-1526

TABLE OF CONTENTS

Summary	3
Automatic Traffic Location Map	4
Monthly Traffic Variations	
2009 vs 2008	5
Comparison of Estimated Vehicle	
Miles by System	6
Vehicle Miles of Travel	7
Individual Recorder Data	8 - 23
Monthly Interstate & Primary VMT	24
Monthly Interstate VMT	25
Monthly US & IA Route VMT	26
Monthly Total State VMT	27

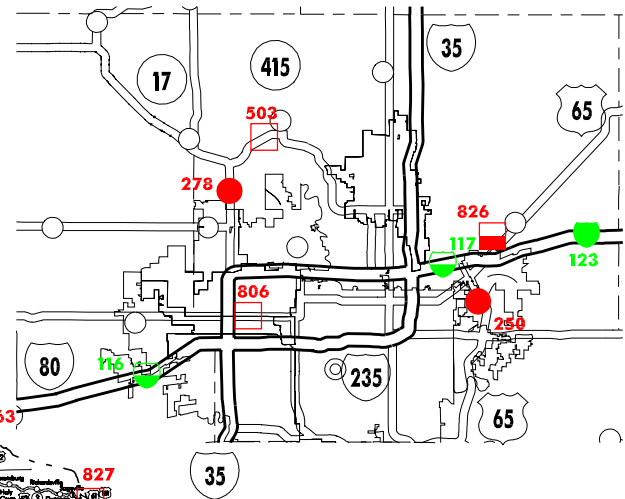
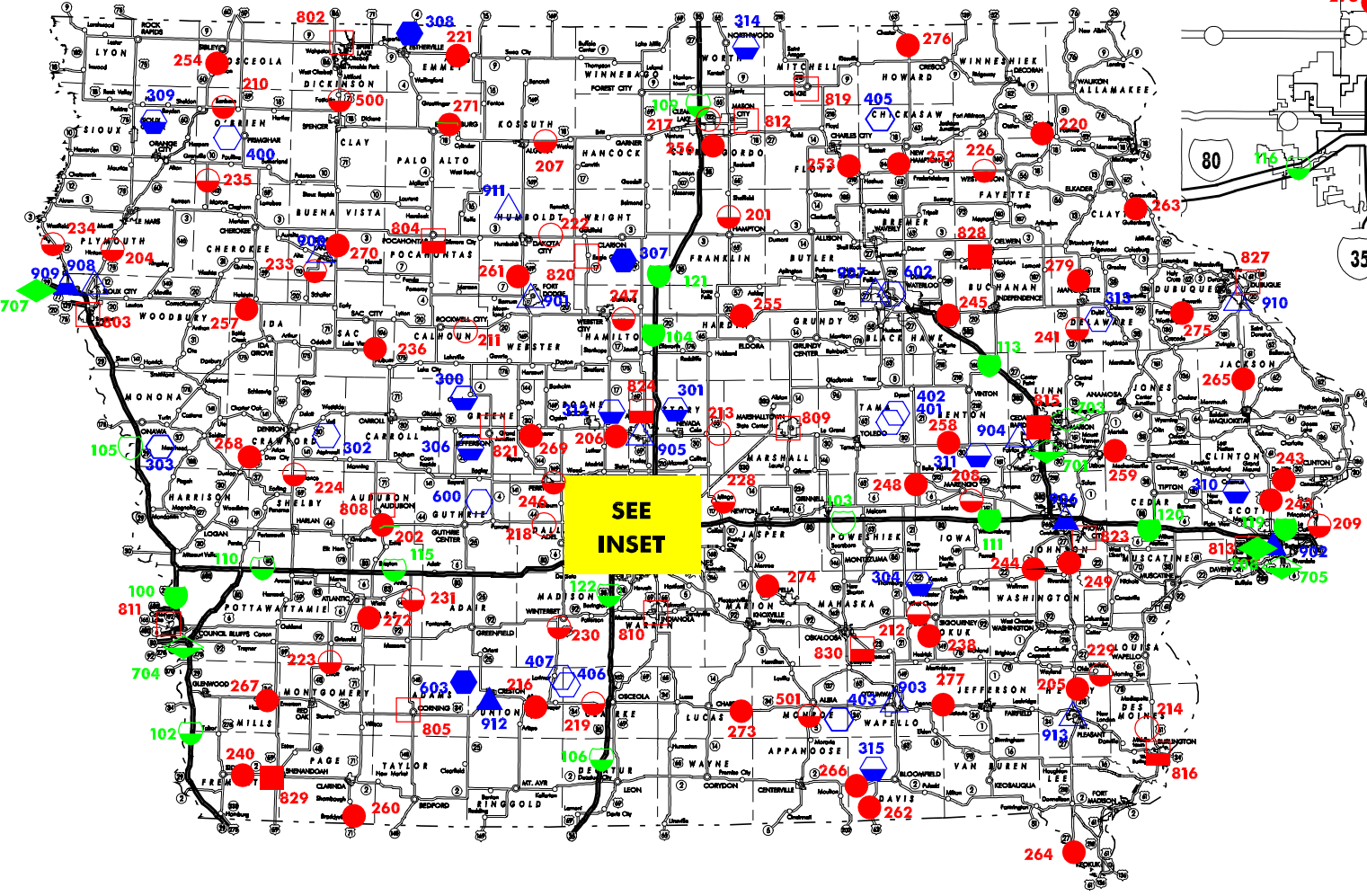
TRAFFIC VOLUME VARIATIONS ON THE IOWA ROAD SYSTEM

<u>DECEMBER</u> 2009	COMPARED TO	<u>DECEMBER</u> 2008	<u>YEAR</u> <u>TO DATE</u> 2009 / 2008
<u>RURAL</u>			
INTERSTATE		-3.5%	1.5%
PRIMARY		-0.8%	2.3%
SECONDARY		-0.7%	3.0%
SUBTOTAL		-1.5%	2.3%
<u>MUNICIPAL</u>			
INTERSTATE		-2.7%	-0.2%
PRIMARY		-1.2%	1.2%
STREETS		-1.3%	-1.0%
SUBTOTAL		-1.5%	-0.3%
STATE TOTAL		-1.5%	1.2%

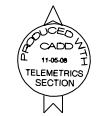
Data collected at the 148 continuous automatic traffic recorder locations shown on the following pages were utilized to compute the above percentages. The rural, municipal and state totals were weighted based on estimated vehicle miles of travel.

AUTOMATIC TRAFFIC RECORDER LOCATIONS

JANUARY 1, 2008



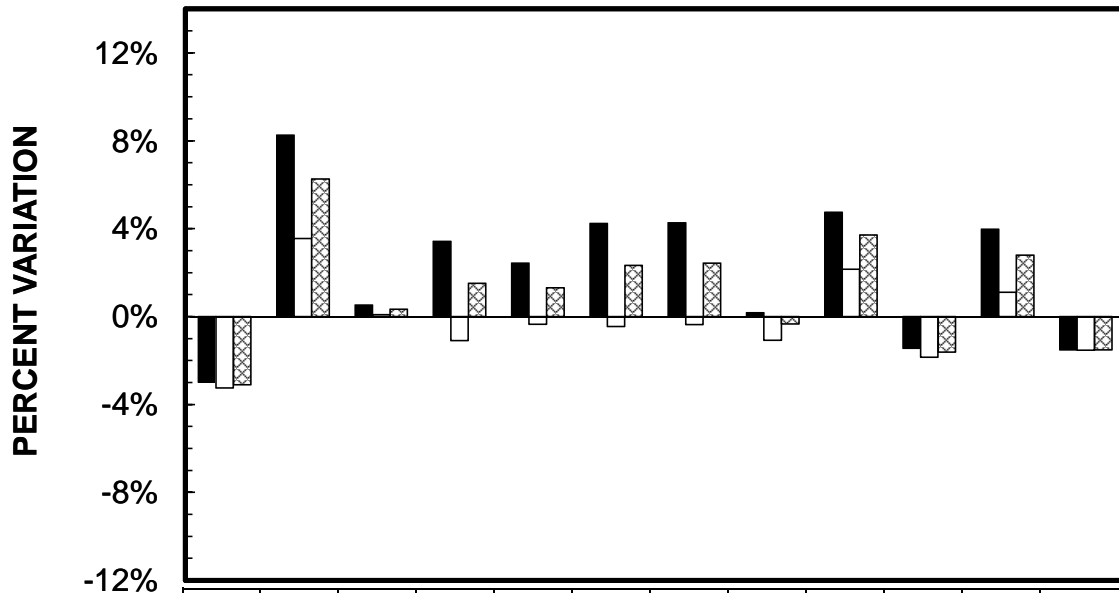
 Iowa Department of Transportation
Office of Transportation Data
Phone 515-239-1526



	13 CLASSES AND SPEED BY AXLE	3 CLASSES AND SPEED BY LENGTH	VOLUME ONLY
RURAL INTERSTATE		8	8
MUNICIPAL INTERSTATE		2	3
RURAL PRIMARY		44	23
MUNICIPAL PRIMARY		3	5
RURAL SECONDARY		3	10
MUNICIPAL STREETS		2	2
TOTAL	160	62	51

MONTHLY TRAFFIC VARIATIONS

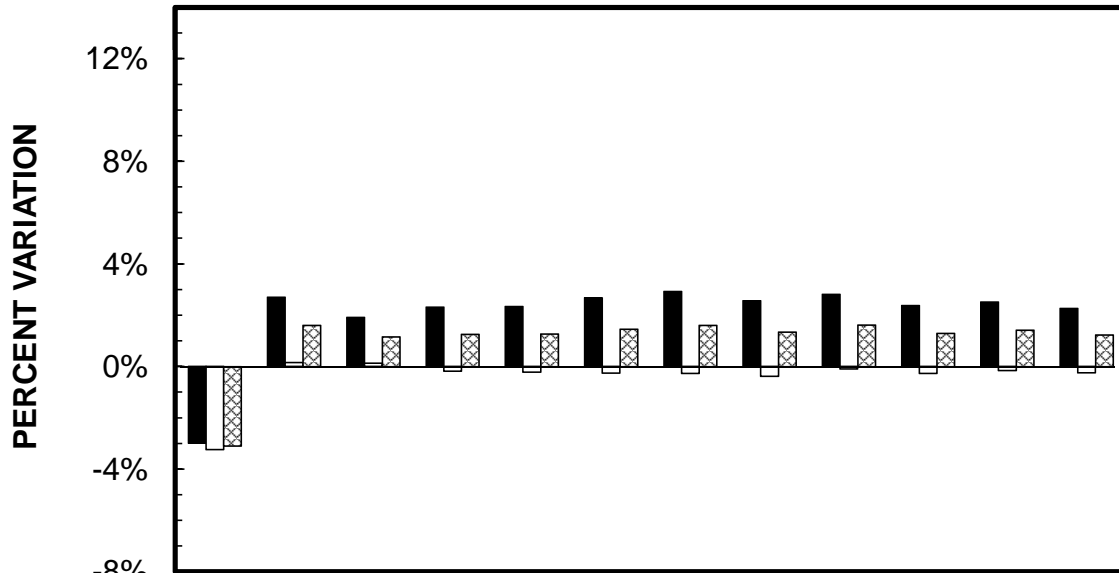
2009 vs 2008



	JAN	FEB	MAR	APR	MAY	JUN	JUL	AUG	SEP	OCT	NOV	DEC
■ RURAL	-2.99%	8.26%	0.52%	3.41%	2.44%	4.24%	4.27%	0.18%	4.75%	-1.44%	3.98%	-1.51%
□ MUNICIPAL	-3.24%	3.56%	0.09%	-1.09%	-0.35%	-0.45%	-0.36%	-1.08%	2.15%	-1.85%	1.11%	-1.52%
▨ STATE TOTAL	-3.10%	6.26%	0.34%	1.52%	1.32%	2.33%	2.44%	-0.32%	3.72%	-1.61%	2.80%	-1.52%

CUMULATIVE MONTHLY TRAFFIC VARIATIONS

2009 vs 2008



	JAN	FEB	MAR	APR	MAY	JUN	JUL	AUG	SEP	OCT	NOV	DEC
■ RURAL	-2.99%	2.70%	1.91%	2.31%	2.34%	2.68%	2.93%	2.56%	2.81%	2.38%	2.51%	2.26%
□ MUNICIPAL	-3.24%	0.15%	0.13%	-0.19%	-0.22%	-0.26%	-0.28%	-0.38%	-0.10%	-0.28%	-0.16%	-0.25%
▨ STATE TOTAL	-3.10%	1.60%	1.16%	1.25%	1.27%	1.45%	1.60%	1.35%	1.62%	1.29%	1.42%	1.23%

COMPARISON OF ESTIMATED VMT BY SYSTEM (IN 1,000,000's)

	JAN %dif	FEB %dif	MAR %dif	APR %dif	MAY %dif	JUN %dif	JUL %dif	AUG %dif	SEP %dif	OCT %dif	NOV %dif	DEC %dif	CUMULATIVE	%dif
RURAL INTERSTATE														
2009	350	379	402	403	460	469	514	496	437	427	391	307	5035	
2008	360 -2.8%	369 2.7%	414 -2.9%	396 1.8%	452 1.8%	452 3.8%	489 5.1%	489 1.4%	414 5.6%	426 0.2%	383 2.1%	318 -3.5%	4962	1.5%
RURAL PRIMARY														
2009	583	634	673	683	748	726	749	702	723	676	627	499	8023	
2008	595 -2.0%	599 5.8%	674 -0.1%	666 2.6%	726 3.0%	692 4.9%	714 4.9%	699 0.4%	692 4.5%	677 -0.1%	609 3.0%	503 -0.8%	7846	2.3%
RURAL SECONDARY														
2009	366	468	461	489	557	502	497	480	538	468	472	304	5602	
2008	384 -4.7%	400 17.0%	440 4.8%	461 6.1%	545 2.2%	484 3.7%	485 2.5%	487 -1.4%	515 4.5%	491 -4.7%	441 7.0%	306 -0.7%	5439	3.0%
RURAL SUBTOTAL														
2009	1299	1481	1536	1575	1765	1697	1760	1678	1698	1571	1490	1110	18660	
2008	1339 -3.0%	1368 8.3%	1528 0.5%	1523 3.4%	1723 2.4%	1628 4.2%	1688 4.3%	1675 0.2%	1621 4.8%	1594 -1.4%	1433 4.0%	1127 -1.5%	18247	2.3%
MUNICIPAL INTERSTATE														
2009	192	212	221	212	220	221	209	215	216	206	194	144	2462	
2008	200 -4.0%	201 5.5%	221 0.0%	211 0.5%	218 0.9%	218 1.4%	212 -1.4%	221 -2.7%	216 0.0%	211 -2.4%	190 2.1%	148 -2.7%	2467	-0.2%
MUNICIPAL PRIMARY														
2009	270	277	296	294	334	320	328	309	292	280	268	238	3506	
2008	275 -1.8%	266 4.1%	294 0.7%	292 0.7%	330 1.2%	315 1.6%	321 2.2%	303 2.0%	283 3.2%	281 -0.4%	263 1.9%	241 -1.2%	3464	1.2%
MUNICIPAL STREETS														
2009	522	559	579	587	594	568	560	579	585	573	543	458	6707	
2008	542 -3.7%	545 2.6%	580 -0.2%	602 -2.5%	604 -1.7%	581 -2.2%	568 -1.4%	591 -2.0%	571 2.5%	587 -2.4%	541 0.4%	464 -1.3%	6776	-1.0%
MUNICIPAL SUBTOTAL														
2009	984	1048	1096	1093	1148	1109	1097	1103	1093	1059	1005	840	12675	
2008	1017 -3.2%	1012 3.6%	1095 0.1%	1105 -1.1%	1152 -0.3%	1114 -0.4%	1101 -0.4%	1115 -1.1%	1070 2.1%	1079 -1.9%	994 1.1%	853 -1.5%	12707	-0.3%
STATE TOTAL														
2009	2283	2529	2632	2668	2913	2806	2857	2781	2791	2630	2495	1950	31335	
2008	2356 -3.1%	2380 6.3%	2623 0.3%	2628 1.5%	2875 1.3%	2742 2.3%	2789 2.4%	2790 -0.3%	2691 3.7%	2673 -1.6%	2427 2.8%	1980 -1.5%	30954	1.2%

**IOWA DEPARTMENT OF TRANSPORTATION
ESTIMATED 2009 VEHICLE MILES OF TRAVEL**
(IN 1,000,000's)

MONTH	RURAL				MUNICIPAL				STATE TOTAL
	INTERSTATE	PRIMARY	SECONDARY	TOTAL	INTERSTATE	PRIMARY	SECONDARY	TOTAL	
JANUARY	350	583	366	1299	192	270	522	984	2283
FEBRUARY	379	634	468	1481	212	277	559	1048	2529
MARCH	402	673	461	1536	221	296	579	1096	2632
APRIL	403	683	489	1575	212	294	587	1093	2668
MAY	460	748	557	1765	220	334	594	1148	2913
JUNE	469	726	502	1697	221	320	568	1109	2806
JULY	514	749	497	1760	209	328	560	1097	2857
AUGUST	496	702	480	1678	215	309	579	1103	2781
SEPTEMBER	437	723	538	1698	216	292	585	1093	2791
OCTOBER	427	676	468	1571	206	280	573	1059	2630
NOVEMBER	391	627	472	1490	194	268	543	1005	2495
DECEMBER	307	499	304	1110	144	238	458	840	1950
SUBTOTAL	5035	8023	5602	18660	2462	3506	6707	12675	31335

COMPARISON OF THE AVERAGE DAILY TRAFFIC FOR EACH MONTH OF 2009 AND 2008
AND ANNUAL DAILY AVERAGE

RURAL INTERSTATE

LOCATION AND STATION NUMBER		JAN.	FEB.	MARCH	APRIL	MAY	JUNE	JULY	AUG.	SEPT.	OCT.	NOV.	DEC.	ANNUAL
I 29 3.0 MI N OF S JCT I 680 HONEY CREEK 100-78	2009	16791	17700	19157	20123	22358	23244	23693	22130	20866	19994	19458	16537	20170
	2008	17025	17609	19453	19568	*21743	22076	23099	22462	20766	20786	19927	18448	20246
	%	-1.37	+5.1	-1.52	+2.83	+2.82	+5.29	+2.57	-1.47	+4.8	-3.81	-2.35	-10.35	-.37
I 29 4.0 MI S OF US 34 PACIFIC JCT 102-65	2009	*9423	*9879	*10983	*11861	*13062	*13819	*14166	*12334	12494	12021	11744	9357	11761
	2008	*9496	9938	*11186	11429	12703	13318	13505	12941	11964	*12357	*11958	*10732	11793
	%	-.76	-.59	-1.81	+3.77	+2.82	+3.76	+4.89	-4.69	+4.42	-2.71	-1.78	-12.81	-.27
I 80 5.0 MI E OF IA 146 GRINNELL 103-79	2009	*20685	*21702	*24276	*25764	*27145	*29153	*31610	31669	28562	27051	26196	20996	26234
	2008	*20579	*20356	*25374	*24915	*27862	*28545	*30270	*31718	*27792	*27165	*26039	*22811	26118
	%	+5.1	+6.61	-4.32	+3.40	-2.57	+2.12	+4.42	-.15	+2.77	-.41	+6.0	-7.95	+4.4
I 35 3.0 MI N OF IA 175 JEWELL 104-40	2009	15775	17159	19350	20018	21878	22613	24042	24177	21919	20951	21041	17187	20509
	2008	16040	16867	19852	19421	21409	22161	22730	23958	20216	20603	20762	17749	20147
	%	-1.65	+1.73	-2.52	+3.07	+2.19	+2.03	+5.77	+9.1	+8.42	+1.68	+1.34	-3.16	+1.79
I 29 3.8 MI S OF IA 175 ONAWA 105-67	2009	9692	10079	11228	11885	*13346	*14232	15748	14889	13373	12724	*12548	*10401	12512
	2008	9523	10066	11527	11274	12982	13717	14496	14117	12292	12340	12047	10775	12096
	%	+1.77	+1.12	-2.59	+5.41	+2.80	+3.75	+8.63	+5.46	+8.79	+3.11	+4.15	-3.47	+3.43
I 35 1.5 MI N OF IA 2 LEON 106-27	2009	10186	10486	12496	12734	13306	13804	14947	14089	12638	13113	13225	11559	12715
	2008	10445	10367	13112	12439	13404	13693	14478	14339	12481	12826	13070	11813	12705
	%	-2.47	+1.14	-4.69	+2.37	-.73	+8.1	+3.23	-1.74	+1.25	+2.23	+1.18	-2.15	+0.07
I 35 3.0 MI N OF CO B20 HANLONTOWN 109-17	2009	14296	15088	17319	18123	19699	21229	22906	22312	20216	19231	19007	15665	18757
	2008	14371	14662	17541	17139	18058	19155	19952	20914	18313	18586	18618	16230	17794
	%	-.52	+2.90	-1.26	+5.74	+9.08	+10.82	+14.80	+6.68	+10.39	+3.47	+2.08	-3.48	+5.41
I 80 1.5 MI W OF CO M16 SHELBY 110-78	2009	16862	17495	20389	21116	24123	26077	27645	27101	24372	22064	21410	17621	22189
	2008	17521	17630	*20666	21001	23412	24303	25031	25901	23100	22439	20787	18934	21727
	%	-3.76	-.76	-1.34	+5.4	+3.03	+7.29	+10.44	+4.63	+5.50	-1.67	+2.99	-6.93	+2.12
I 80 2.0 MI E OF IA 149 WILLIAMSBURG 111-48	2009	22693	24383	27490	28762	31735	33560	35363	36083	32692	31121	30530	24992	29950
	2008	24038	23325	*29439	28819	31826	32782	34254	35647	31177	30515	*29579	25220	29718
	%	-5.59	+4.53	-6.62	-.19	-.28	+2.37	+3.23	+1.22	+4.85	+1.98	+3.21	-.90	+7.8
I 380 3.75 MI NW OF IA 150 BRANDON 113-06	2009	12115	13374	14505	15086	15975	16193	16899	16545	16122	15762	15849	12589	15084
	2008	12525	*11915	*14750	14222	15184	*15075	16401	*16453	15597	15455	15491	12710	14648
	%	-3.27	+12.24	-1.66	+6.07	+5.20	+7.41	+3.03	+5.5	+3.36	+1.98	+2.31	-.95	+2.97
I 80 2.0 MI E OF US 71 ATLANTIC 115-15	2009	14023	14517	17366	18038	20866	22601	24360	23988	21054	18855	18335	14811	19067
	2008	14541	14717	18230	17915	20533	21512	23919	24503	20996	20303	18155	15885	19267
	%	-3.56	-1.35	-4.73	+6.8	+1.62	+5.06	+1.84	-2.10	+2.27	-7.13	+9.9	-6.76	-1.03
I-80 0.8 MI W OF 74TH ST WAUKEE 116-25	2009	27170	28610	31939	33735	37025	38949	40562	40681	37289	35195	34008	28090	34437
	2008	28209	28182	32347	33573	36750	37289	38319	39788	35461	35561	32813	29432	33977
	%	-3.68	+1.51	-1.26	+4.8	+7.4	+4.45	+5.85	+2.24	+5.15	-1.02	+3.64	-4.55	+1.35
I 80 1.75 MI E OF E JCT I 35/80/235 ALTOONA 117-77	2009	57148	62054	65072	69191	73594	77610	77296	78385	74794	72147	69869	59934	69757
	2008	58975	58693	65887	68380	71551	73590	74290	76327	68345	70100	66066	59597	67650
	%	-3.09	+5.72	-1.23	+1.18	+2.85	+5.46	+4.04	+2.69	+9.43	+2.92	+5.75	+5.6	+3.11

COMPARISON OF THE AVERAGE DAILY TRAFFIC FOR EACH MONTH OF 2009 AND 2008
AND ANNUAL DAILY AVERAGE

RURAL INTERSTATE

(CONTINUED)

LOCATION AND STATION NUMBER		JAN.	FEB.	MARCH	APRIL	MAY	JUNE	JULY	AUG.	SEPT.	OCT.	NOV.	DEC.	ANNUAL
I-80 1.5 MI E OF MIDDLE RD LECLAIRE 119-82	2009	21492	22661	25010	25703	*29271	*32073	*31935	*33496	*28645	*28145	*27066	*23285	27398
	2008	23017	22801	27180	26753	29326	30904	30727	*32933	27575	27801	26805	23410	27436
	%	-6.62	-.61	-7.98	-3.92	-.18	+3.78	+3.93	+1.70	+3.88	+1.23	+.97	-.53	-.13
I 80 2.5 MI E OF CO RD X40 TIPTON 120-16	2009	24542	26000	28755	30168	32783	34740	*37198	*38334	*34071	*31931	31642	26471	31386
	2008	*25327	*24927	*29658	*29741	*32804	*35333	*36252	37692	32798	32480	31892	26507	31284
	%	-3.09	+4.30	-3.04	+1.43	-.06	-1.67	+2.60	+1.70	+3.88	-1.69	-.78	-.13	+.32
I-35 2.0 MI N OF CO RD R75 DOWS 121-99	2009	10430	10949	12823	*13330	14728	15683	17011	16533	14731	14021	13821	11807	13822
	2008	10236	10518	12836	12475	14027	15325	15282	*16407	13764	13939	13734	11980	13376
	%	+1.89	+4.09	-.10	+6.85	+4.99	+2.33	+11.31	+.76	+7.02	+.58	+.63	-1.44	+3.33
I 35 1.0 MI N OF IA 92 CUMMING 122-92	2009	18163	18758	20840	21678	22534	*22504	*23969	23272	22044	21704	21549	*19057	21339
	2008	18903	18925	21616	21466	22567	22657	*22852	22634	20790	21442	21237	19978	21255
	%	-3.91	-.88	-3.58	+.98	-.14	-.67	+4.88	+2.81	+6.03	+1.22	+1.46	-4.61	+.39
I80 4.8 MI E OF E JCT US 65 MITCHELLVILLE 123-77	2009	27089	29025	31932	33506	36878	*38417		41395	37834	35801	34551	28731	34474
	2008													
	%	+.00	+.00	+.00	+.00	+.00	+.00	+.00	+.00	+.00	+.00	+.00	+.00	+.00
TOTAL	2009	321486	340894	378998	397315	433428	458084	479350	476018	435882	416030	407298	340359	407087
	2008	330771	331498	390654	390530	426141	441435	455857	468734	413427	414698	398980	352211	401237
	%	-2.80	+2.83	-2.98	+1.73	+1.70	+3.77	+5.15	+1.55	+5.43	+.32	+2.08	-3.36	+1.45

COMPARISON OF THE AVERAGE DAILY TRAFFIC FOR EACH MONTH OF 2009 AND 2008
AND ANNUAL DAILY AVERAGE

RURAL PRIMARY

LOCATION AND STATION NUMBER		JAN.	FEB.	MARCH	APRIL	MAY	JUNE	JULY	AUG.	SEPT.	OCT.	NOV.	DEC.	ANNUAL
US 65 2.7 MI N OF IA 3 HAMPTON 201-35	2009	2422	2648	2762	2995	3074	2904	*3102	*2901	*2972	*3001	*2845	2272	2824
	2008	2443	2466	2668	2845	2994	2934	2959	2886	2863	3013	2761	2503	2777
	%	- .85	+7.38	+3.52	+5.27	+2.67	-1.02	+4.83	+ .51	+3.80	- .39	+3.04	-9.22	+1.69
US 71 2.0 MI N OF IA 44 HAMLIN 202-05	2009	2895	3043	3235	3488	3710	3704	3792	3487	3552	3423	3434	2954	3393
	2008	2959	2993	3209	3379	3627	3700	3683	3527	3584	3491	3272	3082	3375
	%	-2.16	+1.67	+ .81	+3.22	+2.28	+ .10	+2.95	-1.13	- .89	-1.94	+4.95	-4.15	+ .53
US 75 1.3 MI N OF CO C60 HINTON 204-75	2009	10913	11745	12213	12903	13488	13719	13871	13589	13152	12793	12482	11190	12671
	2008	11185	11701	12181	12515	12789	12857	13103	12968	12426	12455	11957	11498	12302
	%	-2.43	+ .37	+ .26	+3.10	+5.46	+6.70	+5.86	+4.78	+5.84	+2.71	+4.39	-2.67	+2.99
US 218 2.7 MI S OF IA 78 SWEDESBURG 205-44	2009	*9750	10392	11202	11466	11905	12285	12642	12157	12517	*11630	11529	10342	11484
	2008	9614	9668	10922	11108	11386	11549	11815	12493	11505	11491	11176	*10034	11063
	%	+1.41	+7.48	+2.56	+3.22	+4.55	+6.37	+6.99	-2.68	+8.79	+1.20	+3.15	+3.06	+3.80
US 30 AT BOONE/STORY CO LINE NAPIER 206-85	2009	11512	12828	12593	13347	13480	13990	14094	13968	15161	14178	13582	11542	13356
	2008	11752	11909	12458	13145	13047	12779	13397	15142	14393	13868	12859	11728	13039
	%	-2.04	+7.71	+1.08	+1.53	+3.31	+9.47	+5.20	-7.75	+5.33	+2.23	+5.62	-1.58	+2.43
US 18 2.2 MI E OF US 169 ALGONA 207-55	2009	2720	2915	2944	3175	3462	3623	4208	3563	3649	3403	3312	2940	3326
	2008	2695	2764	2973	3201	3370	3382	4071	3481	3398	3370	3097	2915	3226
	%	+ .92	+5.46	- .97	- .81	+2.72	+7.12	+3.36	+2.35	+7.38	+ .97	+6.94	+ .85	+3.09
US 6 3.0 MI E OF CO V66 MARENGO 208-48	2009	2602	2793	2992	3259	3420	3448	3515	3345	3321	3249	3112	2781	3153
	2008	2661	2650	2949	3216	3426	*3254	3461	3448	3329	3301	2989	2683	3113
	%	-2.21	+5.39	+1.45	+1.33	- .17	+5.96	+1.56	-2.98	- .24	-1.57	+4.11	+3.65	+1.28
US 67 1.5 MI S OF CO F45 PRINCETON 209-82	2009	3513	3808	3862	4150	*4467	*4537	*4626	*4442	4441	4228	3960	3560	4132
	2008	3738	3643	4043	4280	4443	*4395	4410	4605	4437	4588	4044	3556	4181
	%	-6.01	+4.52	-4.47	-3.03	+ .54	+3.23	+4.89	-3.53	+ .09	-7.84	-2.07	+ .11	-1.17
US 18 4.2 MI E OF IA 60 SHELDON 210-71	2009	3486	3686	3649	4065	4236	4570	4752	4484	4913	4107	3985	3514	4120
	2008	3623	3654	3719	4124	4234	*4463	4423	4364	4629	4117	3742	3548	4053
	%	-3.78	+ .87	-1.88	-1.43	+ .04	+2.39	+7.43	+2.74	+6.13	- .24	+6.49	- .95	+1.65
US 20 2.8 MI E OF CO N57 ROCKWELL CITY 211-13	2009	2504	2758	2859	3088	3274	3395	3575	3560	3468	3358	3340	2691	3155
	2008	2709	2705	2935	3066	3297	3243	3370	3390	3293	3203	3133	2700	3087
	%	-7.56	+1.95	-2.58	+ .71	- .69	+4.68	+6.08	+5.01	+5.31	+4.83	+6.60	- .33	+2.20
IA 92 0.6 MI W OF CO V45 SIGOURNEY 212-54	2009	2165	2331	2493	2669	2868	2782	2787	2795	2825	2664	2624	2231	2602
	2008	2212	2178	2511	2595	2831	*2659	2692	2855	2684	2679	2527	2228	2554
	%	-2.12	+7.02	- .71	+2.85	+1.30	+4.62	+3.52	-2.10	+5.25	- .55	+3.83	+ .13	+1.87
US 30 1.8 MI E OF US 65 COLO 213-85	2009	4157	4611	4760	5180	5371	*5460	5490	5437	5673	5172	5136	4118	5047
	2008	4264	4238	4782	5027	5194	5139	5140	5527	5255	5212	4928	4190	4908
	%	-2.50	+8.80	- .46	+3.04	+3.40	+6.24	+6.80	-1.62	+7.95	- .76	+4.22	-1.71	+2.83
US 61 3.8 MI N OF US 34 BURLINGTON 214-29	2009	5976	6427	6592	7003	*7616	*7658	*7484	*7203	6762	6598	6450	6000	6814
	2008	6196	6203	7135	7439	7573	*7412	*7135	7166	7125	7231	6731	6099	6953
	%	-3.55	+3.61	-7.61	-5.86	+ .56	+3.31	+4.89	+ .51	-5.09	-8.75	-4.17	-1.62	-1.99

COMPARISON OF THE AVERAGE DAILY TRAFFIC FOR EACH MONTH OF 2009 AND 2008
AND ANNUAL DAILY AVERAGE

RURAL PRIMARY

(CONTINUED)

LOCATION AND STATION NUMBER		JAN.	FEB.	MARCH	APRIL	MAY	JUNE	JULY	AUG.	SEPT.	OCT.	NOV.	DEC.	ANNUAL
US 34/169 2.5 MI E OF W JCT US 169 AFTON 216-88	2009	3238	3367	3383	3665	3962	3943	3958	3929	4009	3756	3590	3181	3665
	2008	3169	3199	3426	3559	3844	*3707	3735	3773	3684	3694	3454	3208	3537
	%	+2.17	+5.25	-1.25	+2.97	+3.06	+6.36	+5.97	+4.13	+8.82	+1.67	+3.93	-.84	+3.61
IA 122 2.5 MI E OF I 35 CLEAR LAKE 217-17	2009	12993	13610	13567	14651	15309	15744	16328	15470	14623	14385	13871	13323	14489
	2008	12501	12945	13253	14127	14750	15196	15466	15319	14307	14477	13884	13858	14173
	%	+3.93	+5.13	+2.36	+3.70	+3.78	+3.60	+5.57	+.98	+2.20	-.63	-.09	-3.86	+2.22
IA 44 0.2 MI W OF US 169 ADEL 218-25	2009	2733	2918	3067	3365	3746	3839	3951	*3871	*3683	*3568	*3425	2715	3406
	2008	2888	2809	3057	3360	3685	3806	3914	3852	3549	3578	3324	2931	3396
	%	-5.36	+3.88	+3.32	+1.14	+1.65	+8.86	+9.94	+4.49	+3.77	-.27	+3.03	-7.36	+2.29
US 34 1.0 MI W OF I 35 OSCEOLA 219-20	2009	4146	4411	4486	4756	4941	4825	4871	4774	5009	4685	4521	4063	4624
	2008	4088	4115	4493	4721	5043	4933	4879	4774	4625	4557	4483	4191	4575
	%	+1.41	+7.19	-.15	+7.74	-2.02	-2.18	-.16	+.00	+8.30	+2.80	+.84	-3.05	+1.07
US 52 1.0 MI NW OF US 18 POSTVILLE 220-03	2009	1243	1377	1461	1608	1777	1803	1830	1756	1773	1685	1669	1326	1609
	2008	1335	1319	1465	1688	1745	1773	1673	1735	1675	1714	1521	1297	1578
	%	-6.89	+4.39	-.27	-4.73	+1.83	+1.69	+9.38	+1.21	+5.85	-1.69	+9.73	+2.23	+1.96
IA 9 2.5 MI W OF CO N52 ARMSTRONG 221-32	2009	1413	1451	1452	1627	1843	1813	1864	1714	1766	1675	1600	1362	1631
	2008	1393	1388	1434	1588	1689	1696	1874	1765	1695	1709	1503	1380	1592
	%	+1.43	+4.53	+1.25	+2.45	+9.11	+6.89	-.53	-2.88	+4.18	-1.98	+6.45	-1.30	+2.44
IA 3 0.1 MI W OF CO P66 HUMBOLDT 222-46	2009	1600	1697	1738	1872	1911	1910	1916	1777	1917	1827	1786	1572	1793
	2008	*1656	1663	1776	1880	1951	1952	1950	1879	1901	2051	1818	1658	1844
	%	-3.38	+2.04	-2.13	-.42	-2.05	-2.15	-1.74	-5.42	+.84	-10.92	-1.76	-5.18	-2.76
IA 48 4.0 MI S OF IA 92 GRISWOLD 223-15	2009	1055	1106	1128	1227	1312	1237	1177	1184	1216	1179	1202	952	1164
	2008	1075	1065	1129	1241	1323	1274	1158	1196	1177	1196	1171	1051	1171
	%	-1.86	+3.84	-.08	-1.12	-.83	-2.90	+1.64	-1.00	+3.31	-1.42	+2.64	-9.41	-.59
US 59 0.5 MI S OF CO F16 DEFIANCE 224-83	2009	2186	2302	2414	2687	2833	2822	2860	*2686	2793	2634	2660	2205	2590
	2008	2212	2241	2446	2503	2694	2648	2679	2681	2561	2579	2493	2356	2507
	%	-1.17	+2.72	-1.30	+7.35	+5.15	+6.57	+6.75	+.18	+9.05	+2.13	+6.69	-6.40	+3.31
US 18 3.8 MI E OF CO W14 WEST UNION 226-33	2009	1738	1882	2087	2347	2548	2571	2610	2526	2582	2430	2291	1888	2291
	2008	1868	1837	1993	2273	2384	2407	2424	2388	2401	2424	2120	1853	2197
	%	-6.95	+2.44	+4.71	+3.25	+6.87	+6.81	+7.67	+5.77	+7.53	+.24	+8.06	+1.88	+4.27
IA 117 2.5 MI S OF US 65 MINGO 228-50	2009	750	864	935	1039	1137	1089	1090	1090	1127	1028	991	786	993
	2008	842	780	920	1025	1135	1058	1053	1076	1058	1053	973	777	979
	%	-10.92	+10.76	+1.63	+1.36	+.17	+2.93	+3.51	+1.30	+6.52	-2.37	+1.84	+1.15	+1.43
IA 78 1.2 MI W OF CO X23 WINFIELD 229-44	2009	661	700	716	778	809	777	781	739	804	778	756	682	748
	2008	696	640	700	747	779	*805	731	*737	*761	*801	747	721	738
	%	-5.02	+9.37	+2.28	+4.14	+3.85	-3.47	+6.83	+.27	+5.65	-2.87	+1.20	-5.40	+1.35
US 169 3.5 MI S OF S JCT IA 92 WINTERSET 230-61	2009	1295	1400	1436	1624	1883	1814	1818	1787	1842	1776	1730	1411	1651
	2008	1322	1295	1424	1540	1785	1645	1712	1848	1731	1769	1592	1394	1588
	%	-2.04	+8.10	+8.84	+5.45	+5.49	+10.27	+6.19	-3.30	+6.41	+3.39	+8.66	+1.21	+3.96

COMPARISON OF THE AVERAGE DAILY TRAFFIC FOR EACH MONTH OF 2009 AND 2008
AND ANNUAL DAILY AVERAGE

RURAL PRIMARY

(CONTINUED)

LOCATION AND STATION NUMBER		JAN.	FEB.	MARCH	APRIL	MAY	JUNE	JULY	AUG.	SEPT.	OCT.	NOV.	DEC.	ANNUAL
IA 148 9.3 MI N OF IA 92 ANITA 231-15	2009	633	639	689	798	919	812	820	824	861	773	789	606	763
	2008	647	617	676	750	847	828	797	802	783	858	775	680	755
	%	-2.16	+3.56	+1.92	+6.40	+8.50	-1.93	+2.88	+2.74	+9.96	-9.90	+1.80	-10.88	+1.05
IA 110 1.5 MI S OF CO C65 SCHALLER 233-11	2009	1204	1247	1241	1316	1401	1399	1436	1379	1388	1303	1265	1099	1306
	2008	1192	1230	1245	1303	1379	1405	1430	1369	1312	1299	1220	1194	1298
	%	+1.00	+1.38	-.32	+0.99	+1.59	-.42	+0.41	+0.73	+5.79	+0.30	+3.68	-7.95	+0.61
IA 12 2.5 MI N OF CO K18 AKRON 234-75	2009	1148	1215	1252	1393	1536	1441	1288	1274	1309	1230	*1166	1080	1277
	2008	1110	1171	1209	1313	1408	*1438	1383	1393	1386	1361	1287	1194	1304
	%	+3.42	+3.75	+3.55	+6.09	+9.09	+0.20	-6.86	-8.54	-5.55	-9.62	-9.40	-9.54	-2.07
IA 143 3.4 MI S OF IA 10 MARCUS 235-71	2009	682	712	715	781	795	768	685	772	792	772	808	673	746
	2008	668	683	*712	756	804	813	782	824	862	820	761	700	765
	%	+2.09	+4.24	+0.42	+3.30	-1.11	-5.53	-12.40	-6.31	-8.12	-5.85	+6.17	-3.85	-2.48
IA 196 3.0 MI S OF US 20 SAC CITY 236-81	2009	*1024	*994	*1031	1125	1189	1189	1213	1199	1288	1208	1171	943	1131
	2008	1009	917	1021	1139	*1162	*1131	*1142	*1155	*1166	*1130	*1073	*1016	1088
	%	+1.48	+8.39	+0.97	-1.22	+2.32	+5.12	+6.21	+3.80	+10.46	+6.90	+9.13	-7.18	+3.95
IA 149 2.1 MI N OF IA 78 MARTINSBURG 238-54	2009	935	996	1083	1130	1178	1152	1141	1080	1176	1177	1172	1015	1102
	2008	989	922	1058	1090	1175	*1106	1109	1096	1111	1142	1094	963	1071
	%	-5.46	+8.02	+2.36	+3.66	+0.25	+4.15	+2.88	-1.45	+5.85	+3.06	+7.12	+5.39	+2.89
IA 2 3.0 MI E OF US 275 SIDNEY 240-36	2009	1587	1632	1746	1765	1809	1795	1890	*2067	1804	1805	1793	1573	1772
	2008	1736	1786	1863	1957	2072	*2152	*2037	*2055	*1893	*2047	1707	1668	1914
	%	-8.58	-8.62	-6.28	-9.81	-12.69	-16.58	-7.21	+0.58	-4.70	-11.82	+5.03	-5.69	-7.41
IA 13 5.0 MI S OF US 20 RYAN 241-28	2009	3200	3422	3566	3879	4246	4396	4846	4578	4558	4378	4132	3632	4069
	2008	3478	3311	3958	4001	4331	4209	4367	4523	4294	4535	*4017	3392	4034
	%	-7.99	+3.35	-9.90	-3.04	-1.96	+4.44	+10.96	+1.21	+6.14	-3.46	+2.86	+7.07	+0.86
US 61 3.8 MI N OF CO F41 ELDRIDGE 242-82	2009	14630	*15313	*15582	*16322	16767	*17596	*17737	17221	17083	16864	16283	15101	16374
	2008	14613	14200	15673	16095	16390	*16916	16966	16690	*16968	*16643	15737	*14391	15940
	%	+0.11	+7.83	-0.58	+1.41	+2.30	+4.01	+4.54	+3.18	+0.67	+1.32	+3.46	+4.93	+2.72
US 30 0.3 MI E OF Z24 DEWITT 243-23	2009	8324	9020	9175	9665	9914	10596	10412	10062	10038	10082	9784	9067	9678
	2008	8758	8592	9425	9715	9636	9801	9776	9690	9672	9778	9362	8695	9408
	%	-4.95	+4.98	-2.65	-0.51	+2.88	+8.11	+6.50	+3.83	+3.78	+3.10	+4.50	+4.27	+2.86
IA 1 0.8 MI S OF CO RD F67 KALONA 244-52	2009	5045	5517	5610	6145	6347	6209	5980	5503	5820	5726	5533	4893	5694
	2008	5092	4582	5476	6095	6312	6014	6103	6083	6196	6233	5866	5138	5765
	%	-.92	+20.40	+2.44	+0.82	+0.55	+3.24	-2.01	-9.53	-6.06	-8.13	-5.67	-4.76	-1.23
US 20 1.5 MI E OF CO V62 JESUP 245-07	2009	9026	9686	10077	11195	11904	12345	11792	10997	11190	11027	10746	9488	10789
	2008	9013	9150	10204	10412	10927	11076	11512	11601	11013	11529	10480	9473	10532
	%	+0.14	+5.85	-1.24	+7.52	+8.94	+11.45	+2.43	-5.20	+1.60	-4.35	+2.53	+0.15	+2.44
IA 141 1.0 MI E OF WILLIS AVE PERRY 246-25	2009	8260	9082	9123	9665	10152	10115	10040	10095	9867	9598	9458	8288	9478
	2008	8394	8550	9051	9506	9935	9625	9591	9778	9480	9713	9421	8740	9315
	%	-1.59	+6.22	+0.79	+1.67	+2.18	+5.09	+4.68	+3.24	+4.08	-1.18	+0.39	-5.17	+1.74

COMPARISON OF THE AVERAGE DAILY TRAFFIC FOR EACH MONTH OF 2009 AND 2008
AND ANNUAL DAILY AVERAGE

RURAL PRIMARY

(CONTINUED)

LOCATION AND STATION NUMBER		JAN.	FEB.	MARCH	APRIL	MAY	JUNE	JULY	AUG.	SEPT.	OCT.	NOV.	DEC.	ANNUAL
US 20 3.0 MI E OF E JCT IA 17 WEBSTER CITY 247-40	2009	6387	6955	7344	7744	*8203	*8247	*9024	8772	8476	8059	8197	6600	7834
	2008	6713	6833	7584	7640	8339	8285	8615	8821	8084	8170	8279	6938	7858
	%	-4.85	+1.78	-3.16	+1.36	-1.63	-.45	+4.74	-.55	+4.84	-1.35	-.99	-4.87	-.30
IA 21 2.8 MI N OF US 6 BELLE PLAINE 248-48	2009	909	975	1018	1150	1256	1206	1239	1230	1271	1220	1200	*956	1135
	2008	990	915	1076	1154	1290	*1211	1177	1218	1186	1196	1126	901	1120
	%	-8.18	+6.55	-5.39	-.34	-2.63	-.41	+5.26	+.98	+7.16	+2.00	+6.57	+6.10	+1.33
US 218 3.5 MI S OF IA 921 HILLS 249-52	2009	16397	17863	18613	19382	19657	20282	*21692	21474	21266	20365	19832	17756	19548
	2008	17138	17026	19000	18675	19249	19555	19759	20111	18899	19118	18624	17086	18686
	%	-4.32	+4.91	-2.03	+3.78	+2.11	+3.71	+9.78	+6.77	+12.52	+6.52	+6.48	+3.92	+4.61
US 65 1.5 MI N OF IA 163 PLEASANT HILL 250-77	2009	20408	22095	22409	24195	25947	26322	25956	28399	25745	24667	23914	20629	24223
	2008	20709	20499	22119	23852	25140	*25486	25441	28712	25448	25302	23667	20937	23942
	%	-1.45	+7.78	+1.31	+1.43	+3.21	+3.28	+2.02	-1.09	+1.16	-2.50	+1.04	-1.47	+1.17
US 18/63 0.5 MI S OF CO RD B54 NEW HAMPTON 252-19	2009	4142	4295	4563	4805	5156	5400	5481	5338	5337	5099	4999	4301	4909
	2008	4169	4191	4612	4790	4970	4866	*5225	5298	5058	5207	4883	4306	4797
	%	-.64	+2.48	-1.06	+.31	+3.74	+10.97	+4.89	+.75	+5.51	-2.07	+2.37	-.11	+2.33
US 218 3.5 MI S OF CO RD T64 CHARLES CITY 253-34	2009	6762	*7384	*8122	*8553	9225	9847	*10189	*9822	*9236	*8588	*8850	*7145	8643
	2008	6963	7048	8249	8289	9037	*9282	9854	9788	8902	8923	8776	7396	8542
	%	-2.88	+4.76	-1.53	+3.18	+2.08	+6.08	+3.39	+.34	+3.75	-3.75	+.84	-3.39	+1.18
IA 60 4.1 MI N OF IA 9 SIBLEY 254-72	2009	2600	2799	3000	3251	3514	3691	3908	3753	3539	3292	3392	2817	3296
	2008													
	%	+1.00	+1.00	+1.00	+1.00	+1.00	+1.00	+1.00	+1.00	+1.00	+1.00	+1.00	+1.00	+1.00
US 20 1.0 MI E OF US 65 IOWA FALLS 255-42	2009	6459	7300	7803	8179	8870	8790	9274	9365	8970	8949	9156	6913	8335
	2008	6550	6698	7800	7801	8548	8858	8945	9280	8516	8748	8964	7077	8148
	%	-1.38	+8.98	+1.03	+4.84	+3.76	-.76	+3.67	+.91	+5.33	+2.29	+2.14	-2.31	+2.29
US 18 3.3 MI E OF I 35 MASON CITY 256-17	2009	5735	6275	6905	7472	8076	8599	9277	8711	8374	7755	7868	6297	7612
	2008	*6484	*6323	6828	6930	7636	*7779	8401	8581	7622	7540	7645	6336	7342
	%	-11.55	-.75	+1.12	+7.82	+5.76	+10.54	+10.42	+1.51	+9.86	+2.85	+2.91	-.61	+3.67
US 20 3.6 MI W OF W JCT US 59 HOLSTEIN 257-47	2009	2575	2673	2710	2899	3110	3182	3209	3196	3093	2936	2946	2590	2926
	2008	2476	2595	2748	2860	3013	3052	3091	3085	3012	2970	2968	2711	2881
	%	+3.99	+3.00	-1.38	+1.36	+3.21	+4.25	+3.81	+3.59	+2.68	-1.14	-.74	-4.46	+1.56
US 30 0.6 MI E OF CO RD V66 BLAIRSTOWN 258-06	2009	5001	5499	5784	6453	6544	6435	6414	6451	*6320				
	2008	5311	4905	5789	5894	6289	6107	6245	6690	6382	6377	6136	5161	5940
	%	-5.83	+12.11	-.08	+9.48	+4.05	+5.37	+2.70	-3.57	-.97	+1.00	+1.00	+1.00	+1.00
US 30 3.5 MI E OF IA 1 LISBON 259-16	2009	4652	5086	5336	5802	6045	6118	6066	5995	6013	5704	5686	4826	5610
	2008	4779	4513	5254	5515	5785	5788	5833	5834	5795	5786	5444	4800	5427
	%	-2.65	+12.69	+1.56	+5.20	+4.49	+5.70	+3.99	+2.75	+3.76	-1.41	+4.44	+.54	+3.37
US 71 0.6 MI S OF CO RD J64 BRADDYVILLE 260-73	2009	2057	2088	2219	2350	2458	2473	2504	2428	2417	2373	2318	1930	2301
	2008	1960	2042	2263	2295	2364	2358	2375	2341	2236	2275	2276	2096	2240
	%	+4.94	+2.25	-1.94	+2.39	+3.97	+4.87	+5.43	+3.71	+8.09	+4.30	+1.84	-7.91	+2.72

COMPARISON OF THE AVERAGE DAILY TRAFFIC FOR EACH MONTH OF 2009 AND 2008
AND ANNUAL DAILY AVERAGE

RURAL PRIMARY

(CONTINUED)

LOCATION AND STATION NUMBER		JAN.	FEB.	MARCH	APRIL	MAY	JUNE	JULY	AUG.	SEPT.	OCT.	NOV.	DEC.	ANNUAL
US 169 2.3 MI N OF CO RD D14 FORT DODGE 261-94	2009	4487	5014	5170	5509	5805	5837	6166	5869	5736	5215	5399	4464	5389
	2008	4603	*4670	*5061	5256	5661	5556	5866	5864	5748	5743	5397	4901	5360
	%	-2.52	+7.36	+2.15	+4.81	+2.54	+5.05	+5.11	+0.08	-0.20	-9.19	+0.03	-8.91	+0.54
US 63 1.6 MI S OF IA 2 BLOOMFIELD 262-26	2009	1867	1955	2148	2300	2537	2551	2711	2465	2407	2273	2297	1951	2288
	2008	1868	1857	2203	2207	2407	2362	2456	2423	2257	2299	2283	1983	2217
	%	-0.05	+5.27	-2.49	+4.21	+5.40	+8.00	+10.38	+1.73	+6.64	-1.13	+0.61	-1.61	+3.20
US 52 0.25 MI E OF CO RD X47 GARNAVILLO 263-22	2009	1795	1961	2065	2275	2375	2492	2489	2480	2608	2496	2235	1938	2267
	2008	*1906	*1896	2044	2163	2376	2384	2490	2511	2381	2540	2123	1892	2225
	%	-5.82	+3.42	+1.02	+5.17	-0.04	+4.53	-0.04	-1.23	+9.53	-1.73	+5.27	+2.43	+1.88
IA 27 3 MI S OF CO RD W62 ARGYLE 264-56	2009	3930	4260	5014	4975	5315	5743	6067	5595	5412	5067	5130	4450	5079
	2008	3866	3925	4718	4551	5449	*4930	5569	5487	4874	4859	4759	4190	4764
	%	+1.65	+8.53	+6.27	+9.31	-2.45	+16.49	+8.94	+1.96	+11.03	+4.28	+7.79	+6.20	+6.61
US 61 1 MI N OF CO RD E17 MAQUOKETA 265-49	2009	5989	6363	6789	7169	7445	7830	8241	7932	7903	7643	7192	6346	7236
	2008	6183	6038	6830	6958	7388	7558	7849	7824	7494	7571	6931	6018	7053
	%	-3.13	+5.38	-0.60	+3.03	+0.77	+3.59	+4.99	+1.38	+5.45	+0.95	+3.76	+5.45	+2.59
IA 2 0.8 MI W OF US 63 WEST GROVE 266-26	2009	1300	1352	1422	1536	1712	1713	1740	1600	1668	1561	1509	1317	1535
	2008	1340	1291	1439	1497	1635	1643	1777	1775	1663	1714	1467	1319	1546
	%	-2.98	+4.72	-1.18	+2.60	+4.70	+4.26	-2.08	-9.85	+0.30	-8.92	+2.86	-0.15	-0.71
US 34 3 MI W OF US 59 EMERSON 267-65	2009	3834	3892	4082	4474	4812	4677	4669	4603	4786	4527	4336	3871	4380
	2008	3852	3918	4124	4189	4426	*4238	4203	4285	4430	4337	4022	3997	4168
	%	-0.46	-0.66	-1.01	+6.80	+8.72	+10.35	+11.08	+7.42	+8.03	+4.38	+7.80	-3.15	+5.08
US 30 4 MI SW OF CO RD M14 DOW CITY 268-24	2009	2581	2781	2914	3055	3396	3321	3357	3246	3186	2943	2969	2522	3022
	2008	2591	2626	2884	2993	3209	3140	3210	3229	3155	3030	2909	2752	2977
	%	-0.38	+5.90	+1.04	+2.07	+5.82	+5.76	+4.57	+0.52	+0.98	-2.87	+2.06	-8.35	+1.51
US 30 3.6 MI E OF IA 144 GRAND JUNCTION 269-37	2009	3579	3890	4052	4310	4686	4656	4682	4584	4764	4502	4434	3708	4320
	2008	3487	3511	3932	4036	4272	*4318	4419	4731	4353	4494	4271	3824	4137
	%	+2.63	+10.79	+3.05	+6.78	+9.69	+7.82	+5.95	-3.10	+9.44	+0.17	+3.81	-3.03	+4.42
US 71 3.6 MI S OF IA 3 STORM LAKE 270-11	2009	2136	2132	2164	2349	2553	2668	2868	2739	2852	2365	2320	2151	2441
	2008					2475	2641	2771	2654	2631	*2292	*2205	*2164	
	%	+0.00	+0.00	+0.00	+0.00	+3.15	+1.02	+3.50	+3.20	+8.39	+3.18	+5.21	-0.60	+0.00
US 18 4.3 MI E OF IA 4 EMMETSBURG 271-74	2009	2538	2819	2855	3060	3423	3544	3723	3464	3774	3482	3234	2702	3218
	2008	2586	*2605	2886	3082	3440	3615	3656	3438	3304	3158	2942	2628	3111
	%	-1.85	+8.21	-1.07	-0.71	-0.49	-1.96	+1.83	+0.75	+14.22	+10.25	+9.92	+2.81	+3.43
US 71 5.2 MI S OF W JCT US 6 ATLANTIC 272-15	2009	1888	1987	2081	2256	2411	2403	2400	*2438	2332	2292	2296	1960	2228
	2008	1790	1816	1984	2067	2197	2165	2364	2358	2181	2224	2162	2043	2112
	%	+5.47	+9.41	+4.88	+9.14	+9.74	+10.99	+1.52	+3.39	+6.92	+3.05	+6.19	-4.06	+5.49
US 34 3.6 MI E OF CO RD S56 RUSSELL 273-59	2009	1748	1834	1949	2109	2354	2332	2480	2268	2370	2049	2050	1768	2109
	2008					2286	2257	2296	2291	*2143	*2032	*2028	*1767	
	%	+0.00	+0.00	+0.00	+0.00	+2.97	+3.32	+8.01	-1.00	+10.59	+0.83	+1.08	+0.05	+0.00

COMPARISON OF THE AVERAGE DAILY TRAFFIC FOR EACH MONTH OF 2009 AND 2008
AND ANNUAL DAILY AVERAGE

RURAL PRIMARY

(CONTINUED)

LOCATION AND STATION NUMBER		JAN.	FEB.	MARCH	APRIL	MAY	JUNE	JULY	AUG.	SEPT.	OCT.	NOV.	DEC.	ANNUAL
IA 163 2.6 MI NW OF CO RD G28 PELLA 274-63	2009	8584	9482	9771	10333	11574	11016	11051	11648	10817	10466	10209	9024	10331
	2008	8734	8747	9615	10020	10871	10339	10161	11128	10105	10142	9717	8889	9872
	%	-1.71	+8.40	+1.62	+3.12	+6.46	+6.54	+8.75	+4.67	+7.04	+3.19	+5.06	+1.51	+4.64
US 20 0.5 MI W OF CENTER AVE EPWORTH 275-31	2009	10165	11047	11459	12134	12631	13002	13260	12900	13054	12519	12215	10774	12096
	2008										12593	11871	10616	
	%	+0.00	+0.00	+0.00	+0.00	+0.00	+0.00	+0.00	+0.00	+0.00	+0.00	-0.58	+2.89	+1.48
US 63 1.5 MI N OF IA 9 LIME SPRINGS 276-45	2009	2339	2405	2611	2752	3072	3246	3312	3301	3173	2862	2887	2487	2870
	2008					3020	2989	3149	3243	3030	2991	2843	2503	
	%	+0.00	+0.00	+0.00	+0.00	+1.72	+8.59	+5.17	+1.78	+4.71	-4.31	+1.54	-0.63	+0.00
US 34 1.1 MI E OF IA 16 AGENCY 277-90	2009	6683	7785	7530	8101	8009	7925	8019	7914	8091	8042	8101	7450	7804
	2008										7373	7503	7404	
	%	+0.00	+0.00	+0.00	+0.00	+0.00	+0.00	+0.00	+0.00	+0.00	+9.07	+7.97	+0.62	+0.00
IA 141 0.5 MI N OF IA 44 GRIMES 278-77	2009	17237	18742	19222	20519	22246	22691	22855	22565	22096	20637	20066	18261	20594
	2008					21254	21761	21495	22160	21144	21286	19503	18063	
	%	+0.00	+0.00	+0.00	+0.00	+4.66	+4.27	+6.32	+1.82	+4.50	-3.04	+2.88	+1.09	+0.00
IA 13 1.5 MI N OF CO RD C64 DUNDEE 279-28	2009	1911	1965	2033	2210	2534	2662	2580	2488	2542	2456	2252	2099	2311
	2008													
	%	+0.00	+0.00	+0.00	+0.00	+0.00	+0.00	+0.00	+0.00	+0.00	+0.00	+0.00	+0.00	+0.00
TOTAL	2009	274219	295290	306321	326996	346033	352324	359479	351939	348315	333335	326189	283255	325279
	2008	279532	279362	306825	319144	336098	335948	342638	350056	332885	334055	316734	285703	318220
	%	-1.90	+5.70	-0.16	+2.46	+2.95	+4.87	+4.91	+0.53	+4.63	-0.21	+2.98	-0.85	+2.21

COMPARISON OF THE AVERAGE DAILY TRAFFIC FOR EACH MONTH OF 2009 AND 2008
AND ANNUAL DAILY AVERAGE

RURAL COUNTY - PAVED

LOCATION AND STATION NUMBER		JAN.	FEB.	MARCH	APRIL	MAY	JUNE	JULY	AUG.	SEPT.	OCT.	NOV.	DEC.	ANNUAL
CO RD P14 2.7 MI N OF CO E33 CHURDAN 300-37	2009	176	216	239	297	267	249	257	246	275	263	305	180	247
	2008	181	170	206	242	268	251	274	*262	254	296	265	185	237
	%	-2.76	+27.05	+16.01	+22.72	-.37	-.79	-6.20	-6.10	+8.26	-11.14	+15.09	-2.70	+4.21
CO RD S14 0.8 MI S OF CO E29 NEVADA 301-85	2009	740	879	919	1007	*1102	1098	1122	993	1056	1004	1020	745	973
	2008	802	743	883	1008	1154	1090	1123	1028	1064	1069	974	769	975
	%	-7.73	+18.30	+4.07	-.09	-4.50	+7.73	-.08	-3.40	-.75	-6.08	+4.72	-3.12	-.20
CO RD M55 0.2 MI N OF IA 141 MANILLA 302-24	2009	576	651	707	797	872	*807	*810	*754	*793	*767	*786	517	736
	2008	642	620	725	782	*861	*778	780	765	763	802	736	623	739
	%	-10.28	+5.00	-2.48	+1.91	+1.27	+3.72	+3.84	-1.43	+3.93	-4.36	+6.79	-17.01	-.40
CO RD K45 2.25 MI S OF IA 175 ONAWA 303-67	2009	862	1008	1051	1199	1355	1388	*1328	*1111	*1218	*1137	*1199	*973	1152
	2008	878	887	976	1094	1239	1310	1301	1127	1165	1191	1124	983	1106
	%	-1.82	+13.64	+7.68	+9.59	+9.36	+5.95	+2.07	-1.41	+4.54	-4.53	+6.67	-1.01	+4.15
CO RD V45 3.5 MI N OF IA 92 SIGOURNEY 304-54	2009	508	540	599	690	690	695	683	638	695	689	689	520	636
	2008	505	454	620	665	712	686	659	*649	*660	*700	594	500	617
	%	+5.59	+18.94	-3.38	+3.75	-3.08	+1.31	+3.64	-1.69	+5.30	-1.57	+15.99	+4.00	+3.07
CO RD E53 1.75 MI E OF IA 25 SCRANTON 306-37	2009	393	496	543	596	621	614	584	*530	*598	*592	*570	*401	544
	2008	417	388	494	555	630	532	552	539	576	619	534	406	520
	%	-5.75	+27.83	+9.91	+7.38	-1.42	+15.41	+5.79	-1.66	+3.81	-4.36	+6.74	-1.23	+4.61
CO RD R38 2.2 MI N OF CO C54 CLARION 307-99	2009	981	1146	1189	1320	1340	1244	1261	1296	1334	1343	1433	1004	1240
	2008	1036	1011	1131	1279	1345	1345	1331	1361	1376	1510	1305	1036	1255
	%	-5.30	+13.35	+5.12	+3.20	-.37	-7.50	-5.25	-4.77	-3.05	-11.05	+9.80	-3.08	-1.19
CO RD N32 1.6 MI N OF IA 9 ESTHERVILLE 308-32	2009	243	276	293	375	424	411	396	400	413	392	419	253	357
	2008	261	*250	285	*334	*366	376	370	359	368	382	351	266	330
	%	-6.89	+10.40	+2.80	+12.27	+15.84	+9.30	+7.02	+11.42	+12.22	+2.61	+19.37	-4.88	+8.18
CO RD K52 1.5 MI S OF US 18 HULL 309-84	2009	782	966	975	1136	1179	1218	1134	1094	1206	1135	1128	803	1063
	2008	756	779	872	1004	1093	1069	1117	1020	1084	1233	1127	860	1001
	%	+3.43	+24.00	+11.81	+13.14	+7.86	+13.93	+1.52	+7.25	+11.25	-7.94	+1.08	-6.62	+6.19
CO RD Y52 1.5 MI S OF US 30 GRAND MOUND 310-23	2009	369	413	462	533	594	514	525	481	534	575	578	437	501
	2008	398	350	471	500	562	521	513	489	491	552	525	387	479
	%	-7.28	+18.00	-1.91	+6.60	+5.69	-1.34	+2.33	-1.63	+8.75	+4.16	+10.09	+12.91	+4.59
CO RD W12 3.5 MI S OF US 30 WATKINS 311-06	2009	661	748	786	855	924	915	855	835	945	888	837	653	825
	2008	672	586	779	837	920	856	811	*893	945	886	816	647	804
	%	-1.63	+27.64	+8.89	+2.15	+4.43	+6.89	+5.42	-6.49	+1.00	+1.22	+2.57	+1.92	+2.61
CO RD E26 2.7 MI W OF CO RD R38 BOONE 312-08	2009	899	1183	1203	1342	1369	1375	1322	1359	1450	1395	1373	966	1269
	2008	1026	940	1125	1278	1319	1306	1302	1359	1374	1378	1191	960	1213
	%	-12.37	+25.85	+6.93	+5.00	+3.79	+5.28	+1.53	+1.00	+5.53	+1.23	+15.28	+1.62	+4.61
CO RD D42 0.2 MI E OF IA 13 MANCHESTER 313-28	2009	482	501	570	695	802	872	928	826	753	692	644	530	691
	2008	503	461	579	686	812	851	837	860	687	748	625	499	679
	%	-4.17	+8.67	-1.55	+1.31	-1.23	+2.46	+10.87	-3.95	+9.60	-7.48	+3.04	+6.21	+1.76

COMPARISON OF THE AVERAGE DAILY TRAFFIC FOR EACH MONTH OF 2009 AND 2008
AND ANNUAL DAILY AVERAGE

RURAL COUNTY - PAVED

(CONTINUED)

LOCATION AND STATION NUMBER		JAN.	FEB.	MARCH	APRIL	MAY	JUNE	JULY	AUG.	SEPT.	OCT.	NOV.	DEC.	ANNUAL
CO RD 105 1.3 MI E OF CO S56 NORTHWOOD 314-98	2009	607	690	730	825	838	884	857	842	866	789	786	629	778
	2008	628	633	672	755	812	882	931	876	859	860	792	611	775
	%	-3.34	+9.00	+8.63	+9.27	+3.20	+2.22	-7.94	-3.88	+1.81	-8.25	-1.75	+2.94	+3.38
CO RD 5.5 MI W OF US 63 DRAKESVILLE 315-26	2009	519	556	609	688	819	788	889	732	754	650	602	508	676
	2008	524	507	611	683	823	753	764	738	*704	686	604	477	656
	%	-.95	+9.66	-.32	+1.73	-.48	+4.64	+16.36	-.81	+7.10	-5.24	-1.33	+6.49	+3.04
SUBTOTAL	2009	8798	10269	10875	12355	13196	13072	12951	12137	12890	12311	12369	9119	11688
	2008	9229	8779	10429	11702	12916	12606	12665	12325	12370	12912	11563	9209	11386
	%	-4.67	+16.97	+4.27	+5.58	+2.16	+3.69	+2.25	-1.52	+4.20	-4.65	+6.97	-.97	+2.65
RURAL COUNTY - GRAVEL														
CO RD B30 0.5 MI E OF CO L48 PRIMGHAR 400-71	2009	16	16	16	24	26	23	25	21	23	21	49	25	23
	2008	17	14	16	21	24	20	21	20	24	41	27	15	21
	%	-5.88	+14.28	+1.00	+14.28	+8.33	+15.00	+19.04	+5.00	-4.16	-48.78	+81.48	+66.66	+9.52
LOCAL ROAD 1.75 MI N OF CO E36 CLUTIER 401-86	2009	20	22	23	34	37	33	27	30	28	40	40	29	30
	2008	27	21	15	21	41	45	31	38	29	49	41	21	31
	%	-25.92	+4.76	+53.33	+61.90	-9.75	-26.66	-12.90	-21.05	-3.44	-18.36	-2.43	+38.09	-3.22
LOCAL ROAD .75 MI E OF CO V18 CLUTIER 402-86	2009	32	35	40	61	58	50	43	44	43	52	66	44	47
	2008	43	24	19	31	46	41	41	46	41	63	68	34	41
	%	-25.58	+45.83	+10.52	+96.77	+26.08	+21.95	+4.87	-4.34	+4.87	-17.46	-2.94	+29.41	+14.63
CO RD H47 5.0 MI SE OF US 34 ALBIA 403-68	2009	86	88	86	95	102	*97	*109	104	109	109	116	85	98
	2008	81	75	76	81	90	95	95	102	89	94	107	81	88
	%	+6.17	+17.33	+13.15	+17.28	+13.33	+2.10	+14.73	+1.96	+22.47	+15.95	+8.41	+4.93	+11.36
LOCAL ROAD 2.5 MI N OF US 18 BASSETT 405-19	2009	36	49	46	53	52	50	51	51	49	46	57	43	48
	2008	38	36	38	46	65	49	48	47	47	50	52	39	46
	%	-5.26	+36.11	+21.05	+15.21	-20.00	+2.04	+6.25	+8.51	+4.25	-8.00	+9.61	+10.25	+4.34
LOCAL ROAD 2.0 MI E OF US 169 LORIMOR 406-88	2009	54	53	63	69	76	79	72	60	63	52	56	63	63
	2008	56	50	48	56	66	69	64	56	53	53	56	58	57
	%	-3.57	+6.00	+31.25	+23.21	+15.15	+14.49	+12.50	+7.14	+18.86	-1.88	+1.00	+8.62	+10.52
CO ROAD H23 2.0 MI E OF US 169 LORIMOR 407-88	2009	*75	*66	71	73	78	75	69	68	72	67	71	66	70
	2008	74	63	62	60	84	*78	*66	*62	63	*68	*67	*79	68
	%	+1.35	+4.76	+14.51	+21.66	-7.14	-3.84	+4.54	+9.67	+14.28	-1.47	+5.97	-16.45	+2.94
SUBTOTAL	2009	319	329	345	409	429	407	396	378	387	387	455	355	379
	2008	336	283	274	316	416	397	366	371	346	418	418	327	352
	%	-5.05	+16.25	+25.91	+29.43	+3.12	+2.51	+8.19	+1.88	+11.84	-7.41	+8.85	+8.56	+7.67
TOTAL	2009	9117	10598	11220	12764	13625	13479	13347	12515	13277	12698	12824	9474	12067
	2008	9565	9062	10703	12018	13332	13003	13031	12696	12716	13330	11981	9536	11738
	%	-4.68	+16.94	+4.83	+6.20	+2.19	+3.66	+2.42	-1.42	+4.41	-4.74	+7.03	-.65	+2.80

COMPARISON OF THE AVERAGE DAILY TRAFFIC FOR EACH MONTH OF 2009 AND 2008
AND ANNUAL DAILY AVERAGE

MUNICIPAL INTERSTATE

LOCATION AND STATION NUMBER		JAN.	FEB.	MARCH	APRIL	MAY	JUNE	JULY	AUG.	SEPT.	OCT.	NOV.	DEC.	ANNUAL
I 380 BTWN WILSON AVE AND 33RD AVE CEDAR RAPIDS 701-57	2009	57484	64295	64601	67850	66264	68229	67107	66786	69971	68848	66290	55829	65296
	2008	58968	57080	62576	65838	64620	*67233	68368	67373	67867	68181	62411	54986	63791
	%	-2.51	+12.64	+3.23	+3.05	+2.54	+1.48	-1.84	-.87	+3.10	+.97	+6.21	+1.53	+2.35
I 380 AT J AVE BRIDGE S OF COLDSTREAM CEDAR RAPIDS 703-57	2009	71553	79564	80084	84436	82579	85118	82680	81615	84561	83525	*79671	*70197	80465
	2008	75320	72194	81210	85871	84598	*84014	*82763	*83463	84448	86296	78991	71898	80922
	%	-5.00	+10.20	-1.38	-1.67	-2.38	+1.31	-.10	-2.21	+.13	-3.21	+.86	-2.36	-.56
I-29/80 0.6 MI W OF IA 192 COUNCIL BLUFFS 704-78	2009	67058	68727	74048	77568	81661	81429	81746	80658	78441	76211	74412	65075	75586
	2008	70068	71551	74813	77768	78944	80525	82751	84067	79088	78215	73260	71017	76838
	%	-4.29	-3.94	-1.02	-.25	+3.44	+1.12	-1.21	-4.05	-.81	-2.56	+1.57	-8.36	-1.62
I-74 0.6 MI S OF US 6 BETTENDORF 705-82	2009	43359	47035	47903	49259	*50380	*51486	*49862	*48314	46979	*47263	*46069	*44951	47738
	2008	45672	45098	48211	49590	*49818	*50748	51118	50263	48981	50338	46949	44339	48427
	%	-5.06	+4.29	-.63	-.66	+1.12	+1.45	-2.45	-3.87	-4.08	-6.10	-1.87	+1.38	-1.42
I 29 AT IOWA/S. DAKOTA BORDER SIOUX CITY 707-97	2009	24373	26010	26657	28909	29667	*30687	*30384	*29750	29410	*29582	*28201	*24481	28175
	2008	24753	25407	26245	27714	29106	30309	30827	30266	28978	29490	26758	25322	27931
	%	-1.53	+2.37	+1.56	+4.31	+1.92	+1.24	-1.43	-1.70	+1.49	+.31	+5.39	-3.32	+.87
I 280 0.3 MI SE OF IA 22 DAVENPORT 708-82	2009	16287	17480	18052	20010	*22221	*20427							
	2008										20516	18113	16581	
	%	+.00	+.00	+.00	+.00	+.00	+.00	+.00	+.00	+.00	+.00	+.00	+.00	+.00
TOTAL	2009	263827	285631	293293	308022	310551	316949	311779	307123	309362	305429	294643	260533	297260
	2008	274781	271330	293055	306781	307086	312829	315827	315432	309362	312520	288369	267562	297909
	%	-3.98	+5.27	+.08	+.40	+1.12	+1.31	-1.28	-2.63	+.00	-2.26	+2.17	-2.62	-.21

COMPARISON OF THE AVERAGE DAILY TRAFFIC FOR EACH MONTH OF 2009 AND 2008
AND ANNUAL DAILY AVERAGE

MUNICIPAL PRIMARY

LOCATION AND STATION NUMBER		JAN.	FEB.	MARCH	APRIL	MAY	JUNE	JULY	AUG.	SEPT.	OCT.	NOV.	DEC.	ANNUAL
US 71 W OF MEMPHIS AVE SPIRIT LAKE 802-30	2009	9956	10146	10399	11411	13614	14548	15528	13944	12853	11268	9994	9871	11961
	2008	10130	10146	10345	11381	12815	13297	14047	13275	11614	11057	10010	10243	11530
	%	-1.71	+0.00	+0.52	+0.26	+6.23	+9.40	+10.54	+5.03	+10.66	+1.90	-.15	-3.63	+3.73
IA 12/GORDON DR ON VIADUCT E OF COURT ST SIOUX CITY 803-97	2009										24007	22456	*21446	
	2008	19689	21074	21450	*23558	*23334	*22560	*21744	*23201	*23244	*23773	*22259	*20850	22228
	%	+0.00	+0.00	+0.00	+0.00	+0.00	+0.00	+0.00	+0.00	+0.00	+0.98	+0.88	+2.85	+0.00
IA 4 N OF 4TH AVE NW POCAHONTAS 804-76	2009	2473	2629	2729	2947	3102	3148	3150	3091	3104	2835	2800	2419	2868
	2008	2557	2565	2789	3000	3246	3245	3261	3216	3120	2986	2790	2625	2950
	%	-3.28	+2.49	-2.15	-1.76	-4.43	-2.98	-3.40	-3.88	-.51	-5.05	+0.35	-7.84	-2.77
IA 148 S OF 11TH ST CORNING 805-02	2009	2322	2323	2552	2893	3436	3415	3604	3176	3083	2695	2604	2309	2867
	2008	2473	2413	*2643	2881	3181	3207	3457	3227	2910	2797	2626	2419	2852
	%	-6.10	-3.72	-3.44	+0.41	+8.01	+6.48	+4.25	-1.58	+5.94	-3.64	-.83	-4.54	+0.52
US 6/HICKMAN RD E OF SHASTA WINDSOR HEIGHTS 806-77	2009	17504	18434	18726	19787	20356	20801	20758	20452	20118	19934	19055	17856	19481
	2008	17976	18159	18962	19940	19893	19738	19524	19509	18942	19232	18537	18455	19072
	%	-2.62	+1.51	-1.24	-.76	+2.32	+5.38	+6.32	+4.83	+6.20	+3.65	+2.79	-3.24	+2.14
US 71 S OF BIRCH ST AUDUBON 808-05	2009	4131	4346	4672	4989	5087	5126	5225	4816	4800	4853	4808	4378	4769
	2008	4075	4139	4494	4722	4931	4915	4980	4822	4727	4945	4651	4461	4655
	%	+1.37	+5.00	+3.96	+5.65	+3.16	+4.29	+4.91	-.12	+1.54	-1.86	+3.37	-1.86	+2.44
IA 14 N OF WOODLAND ST MARSHALLTOWN 809-64	2009	5211	5780	5921	6331	6390	6684	6485	6440	6519	6179	6208	5290	6119
	2008	5520	5343	6015	6561	6525	*6880	6474	6510	6488	6441	5879	5337	6164
	%	-5.59	+8.17	-1.56	-3.50	-2.06	-2.84	+0.16	-1.07	+0.47	-4.06	+5.59	-.88	-.73
IA 92 W OF 'N' ST INDIANOLA 810-91	2009	9598	10072	10450	11543	12356	11977	12045	11351	11614	11142	10693	9458	11024
	2008	9478	9304	10152	11185	12051	11954	11955	11464	11214	11368	10434	9487	10837
	%	+1.26	+8.25	+2.93	+3.20	+2.53	+0.19	+0.75	-.98	+3.56	-1.98	+2.48	-.30	+1.72
IA 192 S OF AVE 'N' COUNCIL BLUFFS 811-78	2009	8242	8751	8998	9385	9631	9654	9475	9475	9300	9105	8854	7816	9057
	2008	8201	8868	9420	9802	9686	9429	9363	9327	9280	9301	8617	8385	9139
	%	+0.49	-1.31	-4.47	-4.25	-.56	+2.38	+1.19	+1.58	+0.21	-2.10	+2.75	-6.78	-.89
IA 122 W OF VIRGINIA AVE MASON CITY 812-17	2009	11436	12156	11897	13251	13027	12278	11806	12006	12903	12542	11859	11071	12186
	2008	10958	11397	11398	12478	12516	11657	11745	*11520	*12164	*12267	12190	11610	11825
	%	+4.36	+6.65	+4.37	+6.19	+4.08	+5.32	+0.51	+4.21	+6.07	+2.24	-2.71	-4.64	+3.05
US 6 E OF PINE ST DAVENPORT 813-82	2009	19574	21337	21345	22120	22357	22161	21812	21369	21025	21198	20644	20807	21312
	2008	19349	19907	21332	21600	22657	22456	22058	22739	22196	22713	21964	21264	21686
	%	+1.16	+7.18	+0.06	+2.40	-1.32	-1.31	-1.11	-6.02	-5.27	-6.67	-6.00	-2.14	-1.72
IA 922 BTWEEN WILEY BLVD & WESTDALE DR CEDAR RAPIDS 815-57	2009	9471	9893	10370	10983	11461	11547	11292	11249	11087	11129	10921	10345	10812
	2008	8759	8662	9501	10178	10674	*10144	*9524	*9431	*9444	*9502	*9447	*9356	9551
	%	+8.12	+14.21	+9.14	+7.90	+7.37	+13.83	+18.56	+19.27	+17.39	+17.12	+15.60	+10.57	+13.20
US 34 W OF US 61 WEST BURLINGTON 816-29	2009	11869	12927	13104	13556	13101	13420	*13304	13536	13968	13621	13298	12315	13168
	2008	12372	12391	13013	13418	13221	*14553	*13480	13113	13091	13561	13048	11905	13097
	%	-4.06	+4.32	+0.69	+1.02	-.90	-7.78	-1.30	+3.22	+6.69	+0.44	+1.91	+3.44	+0.54

COMPARISON OF THE AVERAGE DAILY TRAFFIC FOR EACH MONTH OF 2009 AND 2008
AND ANNUAL DAILY AVERAGE

MUNICIPAL PRIMARY

(CONTINUED)

LOCATION AND STATION NUMBER		JAN.	FEB.	MARCH	APRIL	MAY	JUNE	JULY	AUG.	SEPT.	OCT.	NOV.	DEC.	ANNUAL
IA 9 EAST OF 14TH ST OSAGE 819-66	2009	4339	4515	4876	5416	5931	5720	5746	5615	5576	5251	5117	4749	5237
	2008	4385	*4694	4944	5461	5931	5837	5749	5614	5391	5470	5056	4638	5264
	%	-1.04	-3.81	-1.37	-.82	+0.00	-2.00	-.05	+0.01	+3.43	-4.00	+1.20	+2.39	-.51
IA 17 N OF NW 11TH ST EAGLE GROVE 820-99	2009	2416	2487	2593	2810	2906	3023	2985	2805	2778	2743	2662	2467	2722
	2008	2538	2518	2636	2816	2879	2896	2848	2849	2784	2906	2654	2545	2739
	%	-4.80	-1.23	-1.63	-.21	+0.93	+4.38	+4.81	-1.54	-.21	-5.60	+0.30	-3.06	-.62
IA 4 S OF EDGEWOOD AVE E JEFFERSON 821-37	2009	3433	3753	4021	4358	4611	4500	4182	4333	4630	4372	4133	3526	4154
	2008	3551	3460	3873	4209	4477	4404	4163	4312	4440	4446	3908	3649	4074
	%	-3.32	+8.46	+3.82	+3.54	+2.99	+2.17	+0.45	+0.48	+4.27	-1.66	+5.75	-3.37	+1.96
US 6 BETWEEN SYCAMORE & 1ST AVE IOWA CITY 823-52	2009	18583	20145	20348	21578	21742	21455	21162	21247	21563	21245	19950	18806	20652
	2008	19524	19443	20377	21854	22059	*22241	21424	21486	21823	22091	20189	18852	20946
	%	-4.81	+3.61	-.14	-1.26	-1.43	-3.53	-1.22	-1.11	-1.19	-3.82	-1.18	-.24	-1.40
US 69 BETWEEN 15TH & 16TH ST AMES 824-85	2009	15871	17052	16653	17887	17696	17805	17477	17781	17834	17846	17019	16896	17318
	2008	17238	17471	16889	17920	17888	17443	17398	17596	17977	18496	16944	17356	17551
	%	-7.93	-2.39	-1.39	-.18	-1.07	+2.07	+0.45	+1.05	-.79	-3.51	+0.44	-2.65	-1.32
US 65 1.5 MI NE OF I-80 BONDURANT 826-77	2009	10058	11227	11518	12225	13085	13386	13161	13884	12953	12649	12502	10622	12272
	2008	10368	10289	11318	12043	12852	12298	12485	13402	12218	12184	11398	10278	11761
	%	-2.98	+9.11	+1.76	+1.51	+1.81	+8.84	+5.41	+3.59	+6.01	+3.81	+9.68	+3.34	+4.34
US 61/151 W OF MISSISSIPPI R. DUBUQUE 827-31	2009	17022	18491	19701	20909	21763	*22036	*21922	*23558	22621	22699	20844	*17372	20744
	2008	17219	*16675	18996	20744	*21142	*21865	*22053	*21844	*21113	21553	19571	17598	20031
	%	-1.14	+10.89	+3.71	+0.79	+2.93	+0.78	-.59	+7.84	+7.14	+5.31	+6.50	-1.28	+3.55
IA 150 S OF 12TH ST OELWEIN 828-33	2009	5566	6020	6132	6559	7096	7139	7073	6722	6786	6465	6233	5743	6461
	2008	5367	5561	*6052	6284	7092	6688	6667	6643	6607	6701	6065	5816	6295
	%	+3.70	+8.25	+1.32	+4.37	+0.05	+6.74	+6.08	+1.18	+2.70	-3.52	+2.76	-1.25	+2.63
US 59 SOUTH OF 5TH AVENUE SHENANDOAH 829-73	2009	7875	8175	8427	8905	9398	9210	9138	8773	9096	8827	8579	7932	8694
	2008	8320	8562	8771	9286	9752	9613	9431	9420	9485	9549	8735	8532	9121
	%	-5.34	-4.51	-3.92	-4.10	-3.63	-4.19	-3.10	-6.86	-4.10	-7.56	-1.78	-7.03	-4.68
IA 23 1 MI S OF IA 92 OSKALOOSA 830-62	2009	2472	2653	2804	2944	2920	2919	2909	3026	3362	3069	2855	2527	2871
	2008	2622	2584	2863	3293	3136	3193	2998	2920	3111	3092	3089	*2522	2951
	%	-5.72	+2.67	-2.06	-10.59	-6.88	-8.58	-2.96	+3.63	+8.06	-.74	-7.57	+0.19	-2.71
TOTAL	2009	199422	213312	218236	232787	241066	241952	240239	238649	237573	231667	221632	204575	226749
	2008	202980	204551	216783	231056	238604	237953	235084	234239	230139	232658	217802	207333	224091
	%	-1.75	+4.28	+0.67	+0.74	+1.03	+1.68	+2.19	+1.88	+3.23	-.42	+1.75	-1.33	+1.18

COMPARISON OF THE AVERAGE DAILY TRAFFIC FOR EACH MONTH OF 2009 AND 2008
AND ANNUAL DAILY AVERAGE

MUNICIPAL STREETS

LOCATION AND STATION NUMBER		JAN.	FEB.	MARCH	APRIL	MAY	JUNE	JULY	AUG.	SEPT.	OCT.	NOV.	DEC.	ANNUAL
LAKE ST N OF 3RD ST STORM LAKE 900-11	2009	2403	2601	2810	2951	3181	3137	3340	2972	2913	2755	2720	2402	2848
	2008	2543	2644	2689	2976	3146	3106	3140	2695	2509	2617	2607	2409	2756
	%	-5.50	-1.62	+4.49	-.84	+1.11	+.99	+6.36	+10.27	+16.10	+5.27	+4.33	-.29	+3.33
2ND AVE N E OF 15TH ST FORT DODGE 901-94	2009	6129	6636	6690	6935	7081	6898	6648	6585	6830	6887	6533	6139	6665
	2008	6211	6314	6505	7006	7102	7100	6915	7017	7069	7033	6568	6471	6775
	%	-1.32	+5.09	+2.84	-1.01	-.29	-2.84	-3.86	-6.15	-3.38	-2.07	-.53	-5.13	-1.62
LOCUST ST E OF SPRING ST DAVENPORT 902-82	2009	19019	20741	20771	21743	21322	20874	20790	21566	21066	21101	20534	19190	20726
	2008	20071	20587	21073	23432	22092	*22163	21729	21576	20457	21780	21514	19135	21300
	%	-5.24	+.74	-1.43	-7.20	-3.48	-5.81	-4.32	-.04	+2.97	-3.11	-4.55	+.28	-2.69
JEFFERSON ST NE OF E 5TH ST OTTUMWA 903-90	2009	5730	6105	6191	6400	6417	6322	5763	5616	6235	6108	5826	5362	6006
	2008	5854	5788	6115	6704	6766	6841	6295	6306	6489	6633	6014	5459	6272
	%	-2.11	+5.47	+1.24	-4.53	-5.15	-7.58	-8.45	-10.94	-3.91	-7.91	-3.12	-1.77	-4.24
JOHNSON AVE W OF JANICE DR CEDAR RAPIDS 904-57	2009	9145	9715	9737	10260	10602	10315	10005	10008	9993	9659	9374	9009	9818
	2008	9009	9099	9610	10116	10582	*10924	10676	10533	10196	10231	9581	9446	10000
	%	+1.50	+6.76	+1.32	+1.42	+.18	-5.57	-6.28	-4.98	-1.99	-5.59	-2.16	-4.62	-1.82
NORTHWESTERN AVE N OF 20TH ST AMES 905-85	2009	1926	2212	2132	2440	2465	2508	2262	2255	2391	2356	2237	1995	2264
	2008	2071	2145	2075	2386	2363	2070	2004	2242	2470	2428	2125	2052	2202
	%	-7.00	+3.12	+2.74	+2.26	+4.31	+21.15	+12.87	+.57	-3.19	-2.96	+5.27	-2.77	+2.81
DUBUQUE ST S OF DAVENPORT ST IOWA CITY 906-52	2009	12147	14307	13891	15398	15007	14877	*14855	15249	15659	15628	14002	11912	14411
	2008	12871	14376	14425	16207	15737	*15589	*14995	15259	15475	15360	13815	12157	14688
	%	-5.62	-.47	-3.70	-4.99	-4.63	-4.56	-.93	-.06	+1.18	+1.74	+1.35	-2.01	-1.88
COLLEGE ST S OF 23RD ST CEDAR FALLS 907-07	2009													
	2008	*7892	*8005											
	%	+.00	+.00	+.00	+.00	+.00	+.00	+.00	+.00	+.00	+.00	+.00	+.00	+.00
LINDENWOOD ST S OF 35TH ST SIOUX CITY 908-97	2009	804	880	909	1030	1118	1141	1104	1030	1017	945	922	827	977
	2008	841	838	923	1014	1129	1113	1052	1022	1005	913	922	859	969
	%	-4.39	+5.01	-1.51	+1.57	-.97	+2.51	+4.94	+.78	+1.19	+3.50	+.00	-3.72	+.82
HAMILTON BLVD N OF CLIFTON AVE SIOUX CITY 909-97	2009	12478	13350	13533	14614	15350	14918	14673	14697	15005	14388	14081	12826	14159
	2008	12621	12816	13242	14156	14939	14305	14114	14434	14434	14743	13501	12954	13854
	%	-1.13	+4.16	+2.19	+3.23	+2.75	+4.28	+3.96	+1.82	+3.95	-2.40	+4.29	-.98	+2.20
GRANDVIEW AVE SE OF PLYMOUTH CT DUBUQUE 910-31	2009	7334	7916	8352	9145	9728	9752	9447	9204	9556	9134	8643	8247	8871
	2008	7605	7354	7952	8869	9529	*9460	9052	8976	8998	9084	8359	7915	8596
	%	-3.56	+7.64	+5.03	+3.11	+2.08	+3.08	+4.36	+2.54	+6.20	+.55	+3.39	+4.19	+3.19
HUMBOLDT AVE S OF 4TH ST BODE 911-46	2009	627	688	719	802	829	827	807	789	832	817	863	641	770
	2008	684	666	781	837	864	808	785	771	814	863	784	656	776
	%	-8.33	+3.30	-7.93	-4.18	-4.05	+2.35	+2.80	+2.33	+2.21	-5.33	+10.07	-2.28	-.77
ELM ST N OF LUCAS ST CRESTON 912-88	2009	3414	3625	*3725	3976	4039	4078	3907	3805	3997	3767	3812	3542	3807
	2008	3422	3446	3735	3929	4137	4182	3959	3925	3890	3858	3533	3564	3798
	%	-.23	+5.19	-.26	+1.19	-2.36	-2.48	-1.31	-3.05	+2.75	-2.35	+7.89	-.61	+2.23

COMPARISON OF THE AVERAGE DAILY TRAFFIC FOR EACH MONTH OF 2009 AND 2008
AND ANNUAL DAILY AVERAGE

MUNICIPAL STREETS

(CONTINUED)

LOCATION AND STATION NUMBER		JAN.	FEB.	MARCH	APRIL	MAY	JUNE	JULY	AUG.	SEPT.	OCT.	NOV.	DEC.	ANNUAL
WASHINGTON ST EAST OF HARRISON ST MOUNT PLEASANT 913-44	2009	9131	9804	9937	10321	10668	10751	10519	10473	11361	10066	9609	9300	10161
	2008	9860	10019	10490	10990	11291	11233	10931	11727	10502	10577	9493	9374	10540
	%	-7.39	-2.14	-5.27	-6.08	-5.51	-4.29	-3.76	-10.69	+8.17	-4.83	+1.22	-.78	-3.59
TOTAL	2009	90287	98580	99397	106015	107807	106398	104120	104249	106855	103611	99156	91392	101483
	2008	93663	96092	99615	108622	109677	108894	105647	106483	104308	106120	98816	92451	102526
	%	-3.60	+2.58	-.21	-2.40	-1.70	-2.29	-1.44	-2.09	+2.44	-2.36	+.34	-1.14	-1.01

COMPARISON OF THE AVERAGE DAILY TRAFFIC FOR EACH MONTH OF 2009 AND 2008
AND ANNUAL DAILY AVERAGE

RECREATIONAL PRIMARY

LOCATION AND STATION NUMBER		JAN.	FEB.	MARCH	APRIL	MAY	JUNE	JULY	AUG.	SEPT.	OCT.	NOV.	DEC.	ANNUAL
US 71 0.1 MI S OF CO RD B14 FOSTORIA 500-21	2009	6265	6626	6882	7613	8744	9655	10455	9745	9900	7551	7145	6234	8067
	2008	6660	6592	6948	7666	8510	9234	9821	9389	9107	7514	6720	6366	7877
	%	-5.93	+5.51	-9.4	-6.9	+2.74	+4.55	+6.45	+3.79	+8.70	+4.49	+6.32	-2.07	+2.41
IA 5 3.8 MI S OF US 34 MORAVIA 501-68	2009	3187	3297	3495	3742	4350	4455	4793	4449	4336	3881	3752	3333	3922
	2008	3125	3043	3402	3594	4066	4014	4298	4130	3908	3835	3590	3299	3692
	%	+1.98	+8.34	+2.73	+4.11	+6.98	+10.98	+11.51	+7.72	+10.95	+1.19	+4.51	+1.03	+6.22
IA 415 0.5 MI W OF NW POLK CITY RD, POLK CITY 503-77	2009	4169	4662	4987	5564	6766	6951	7440	7779	7778	6607	5773	4438	6076
	2008	4037	3953	4394	5045	5937	*6396	6394	6394	6217	5723	4812	4219	5293
	%	+3.26	+17.93	+13.49	+10.28	+13.96	+8.67	+16.35	+21.66	+25.10	+15.44	+19.97	+5.19	+14.79
SUBTOTAL	2009	13621	14585	15364	16919	19860	21061	22688	21973	22014	18039	16670	14005	18065
	2008	13822	13588	14744	16305	18513	19644	20513	19913	19232	17072	15122	13884	16862
	%	-1.45	+7.33	+4.20	+3.76	+7.27	+7.21	+10.60	+10.34	+14.46	+5.66	+10.23	+0.87	+7.13

RECREATIONAL SECONDARY

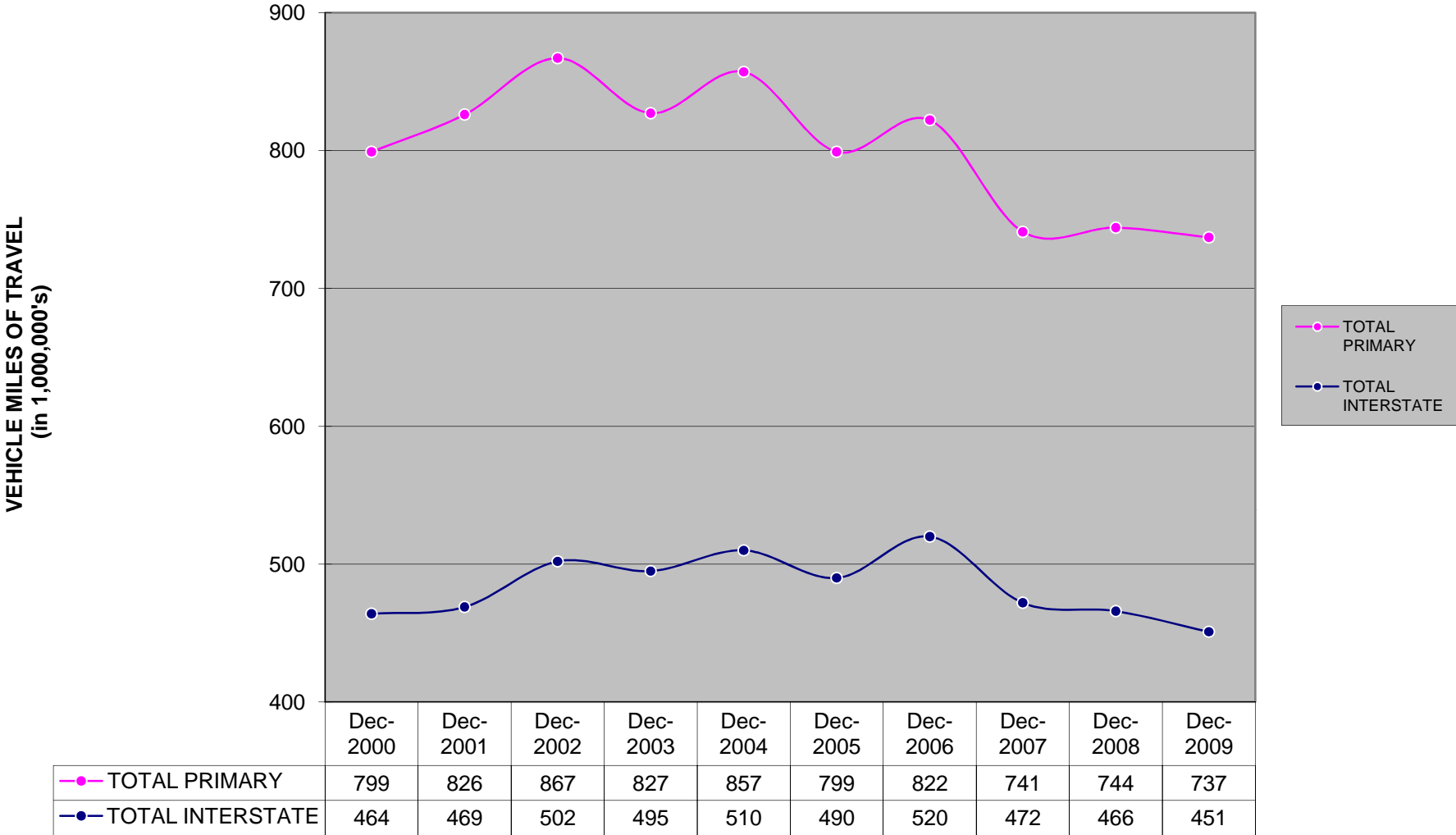
CO RD F25 0.1 MI W OF CO P18 SPRINGBROOK 600-39	2009	113	133	177	213	303	283	323	271	269	207	184	119	216
	2008	124	141	158	192	283	261	305	255	214	223	184	127	205
	%	-8.87	-5.67	+12.02	+10.93	+7.06	+8.42	+5.90	+6.27	+25.70	-7.17	+0.00	-6.29	+5.36
ENTRANCE TO GEORGE WYTH STATE PARK WATERLOO 602-07	2009	289	338	477	664	1326	1221	1220	1080	1007	449	428	281	731
	2008	248	238	372	642	1113	*1385	*1224	838	691	444	303	228	643
	%	+16.53	+42.01	+28.22	+3.42	+19.13	-11.84	-0.32	+28.87	+45.73	+1.12	+41.25	+23.24	+13.68
ENTRANCE TO GREEN VALLEY STATE PARK 603-88	2009	162	157	*196	195	218	207	226	193	164	146	152	88	175
	2008	108	107	193	243	507	564	497	386	257	155	*159	106	273
	%	+50.00	+46.72	+1.55	-19.75	-57.00	-63.29	-54.52	-50.00	-36.18	-5.80	-4.40	-16.98	-35.89
SUBTOTAL	2009	564	628	850	1072	1847	1711	1769	1544	1440	802	764	488	1122
	2008	480	486	723	1077	1903	2210	2026	1479	1162	822	646	461	1121
	%	+17.50	+29.21	+17.56	-0.46	-2.94	-22.57	-12.68	+4.39	+23.92	-2.43	+18.26	+5.85	+0.08
TOTAL	2009	14185	15213	16214	17991	21707	22772	24457	23517	23454	18841	17434	14493	19187
	2008	14302	14074	15467	17382	20416	21854	22539	21392	20394	17894	15768	14345	17983
	%	-0.81	+8.09	+4.82	+3.50	+6.32	+4.20	+8.50	+9.93	+15.00	+5.29	+10.56	+1.03	+6.69

NOTES:

* TRAFFIC ESTIMATED DUE TO ROAD CONSTRUCTION IN AREA, INSUFFICIENT OR INACCURATE DATA.

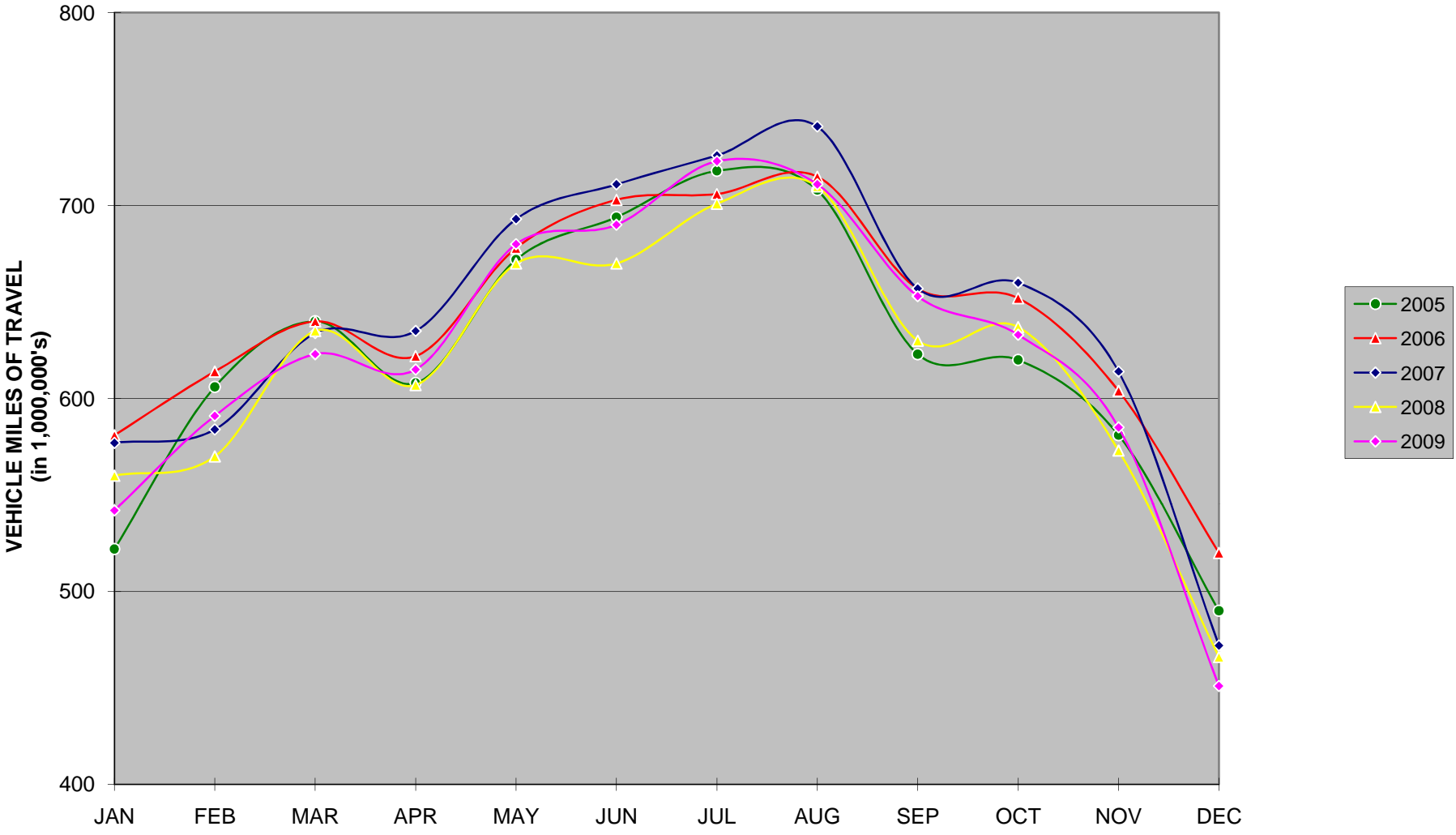
MONTHS WITHOUT COMPARABLE DATA NOT INCLUDED IN TOTALS.

DECEMBER HISTORICAL VMT



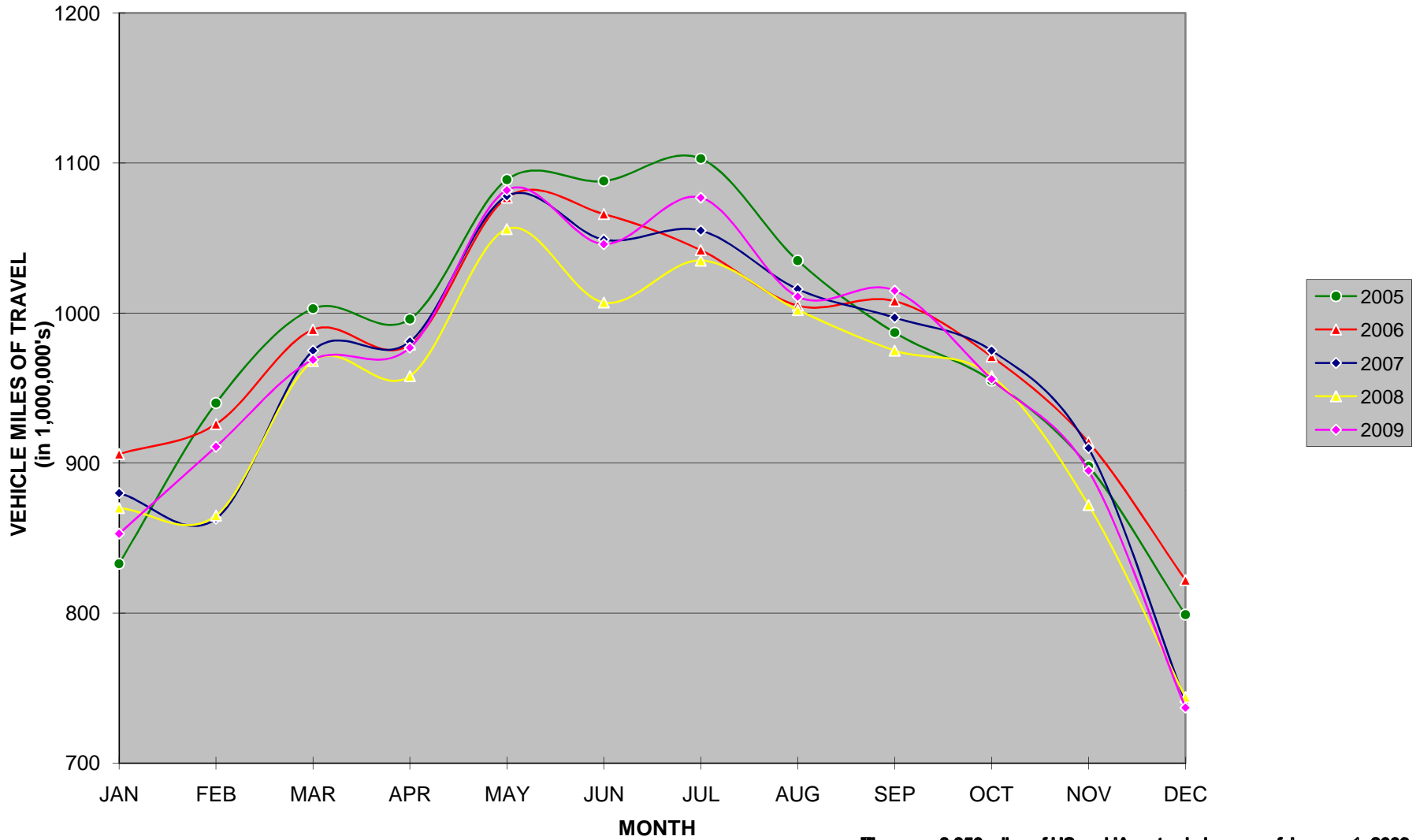
YEAR

MONTHLY INTERSTATE TRAVEL



There are 1,054 miles of Interstate in Iowa as of January 1, 2009.

MONTHLY US & IA ROUTE VMT



There are 8,350 miles of US and IA routes in Iowa as of January 1, 2009.

MONTHLY TOTAL STATE VMT (Includes Interstate, US, IA, Secondary & Municipal Roads)

