



**AUTOMATIC TRAFFIC RECORDER
MONTHLY REPORT
DECEMBER 2012**

PREPARED BY

OFFICE OF TRANSPORTATION DATA

IN COOPERATION WITH

UNITED STATES DEPARTMENT OF TRANSPORTATION

FEDERAL HIGHWAY ADMINISTRATION

TELEPHONE

515/239-1526

TABLE OF CONTENTS

Summary	3
Automatic Traffic Location Map	4
Monthly Traffic Variations 2012 vs 2011	5
Comparison of Estimated Vehicle Miles by System	6
Vehicle Miles of Travel	7
Individual Recorder Data	8 - 27
Monthly Interstate & Primary VMT	28
Monthly Interstate VMT	29
Monthly US & IA Route VMT	30
Monthly Total State VMT	31

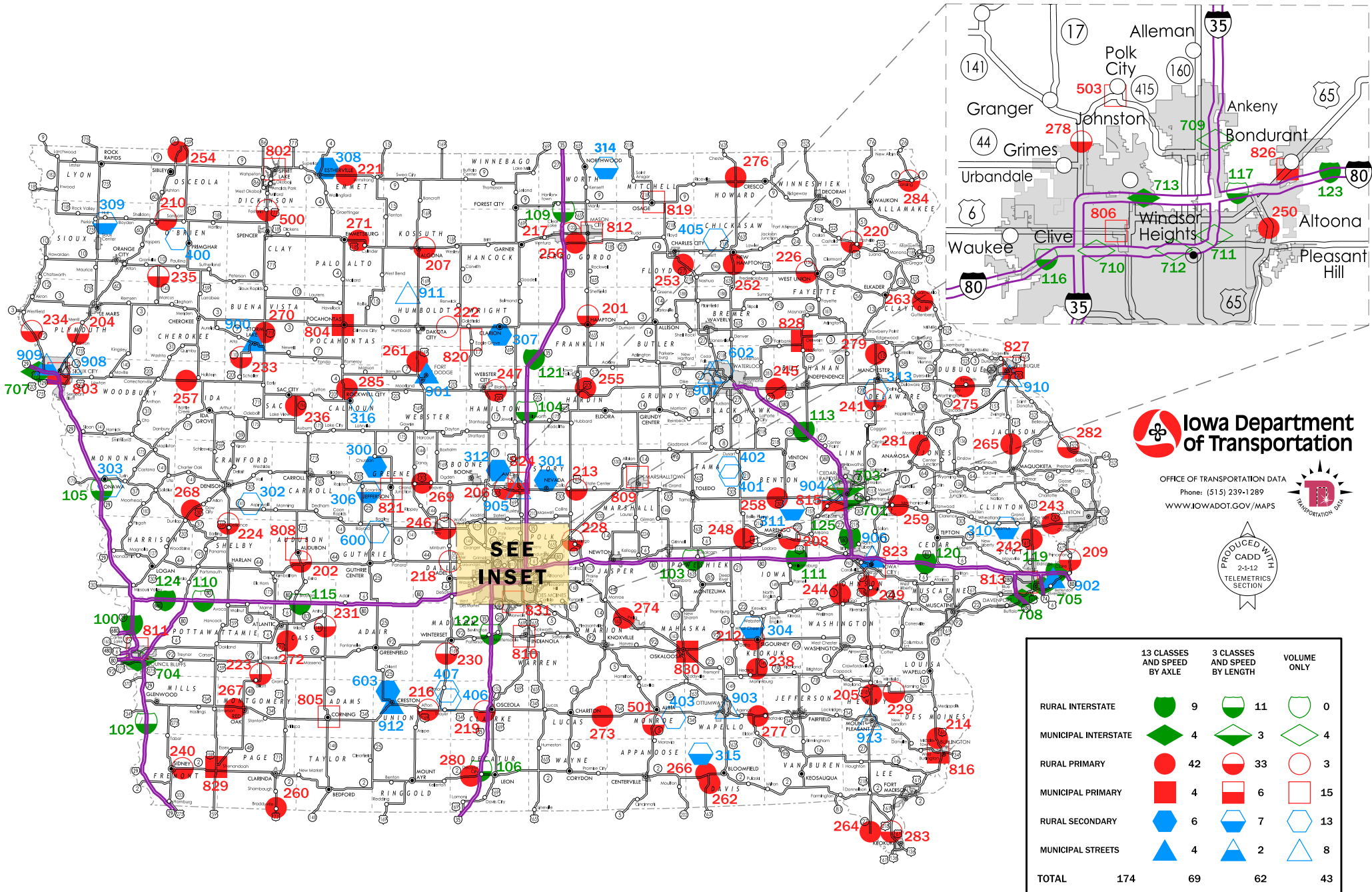
TRAFFIC VOLUME VARIATIONS ON THE IOWA ROAD SYSTEM

<u>DECEMBER</u> 2012	COMPARED TO	<u>DECEMBER</u> 2011	<u>YEAR</u> <u>TO DATE</u> 2012 / 2011
<u>RURAL</u>			
INTERSTATE		-3.7%	0.7%
PRIMARY		-2.2%	1.3%
SECONDARY		-4.8%	1.3%
SUBTOTAL		-3.3%	1.1%
<u>MUNICIPAL</u>			
INTERSTATE		-3.7%	0.6%
PRIMARY		-5.1%	-0.1%
STREETS		-2.5%	-0.3%
SUBTOTAL		-3.4%	-0.1%
STATE TOTAL		-3.4%	0.6%

Data collected at the 174 continuous automatic traffic recorder locations shown on the following pages were utilized to compute the above percentages. The rural, municipal and state totals were weighted based on estimated vehicle miles of travel.

AUTOMATIC TRAFFIC RECORDER LOCATIONS

JANUARY 1, 2012



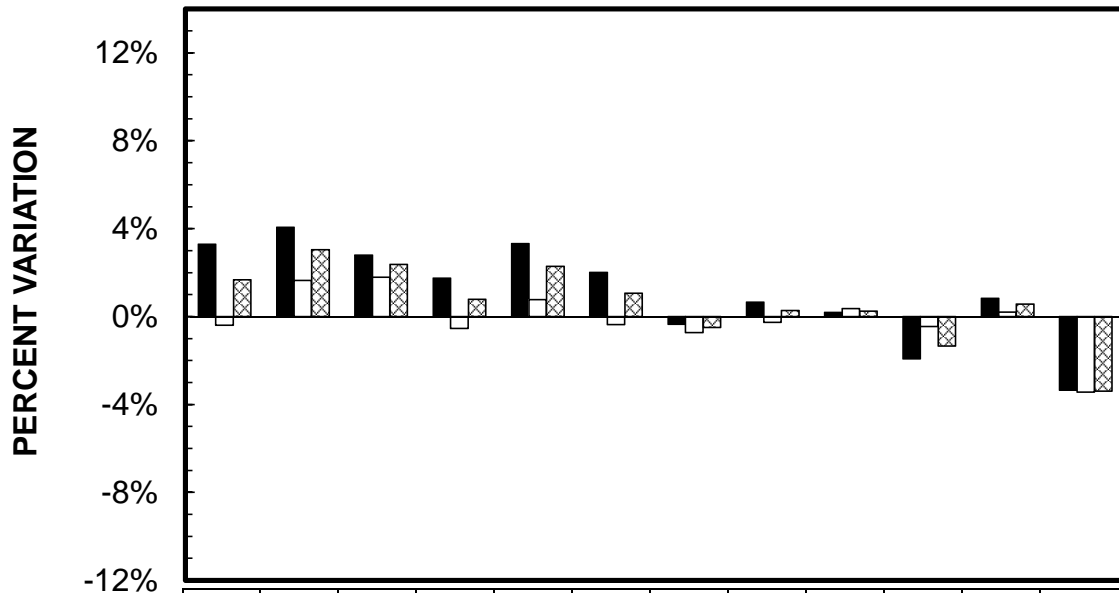
Iowa Department of Transportation
 OFFICE OF TRANSPORTATION DATA
 Phone: (515) 239-1289
WWW.IOWADOT.GOV/MAPS

PRODUCED WITH
 CADD
 24-12
 TELEMETRICS
 SECTION

	13 CLASSES AND SPEED BY AXLE	3 CLASSES AND SPEED BY LENGTH	VOLUME ONLY
RURAL INTERSTATE	9	11	0
MUNICIPAL INTERSTATE	4	3	4
RURAL PRIMARY	42	33	3
MUNICIPAL PRIMARY	4	6	15
RURAL SECONDARY	6	7	13
MUNICIPAL STREETS	4	2	8
TOTAL	174	69	43

MONTHLY TRAFFIC VARIATIONS

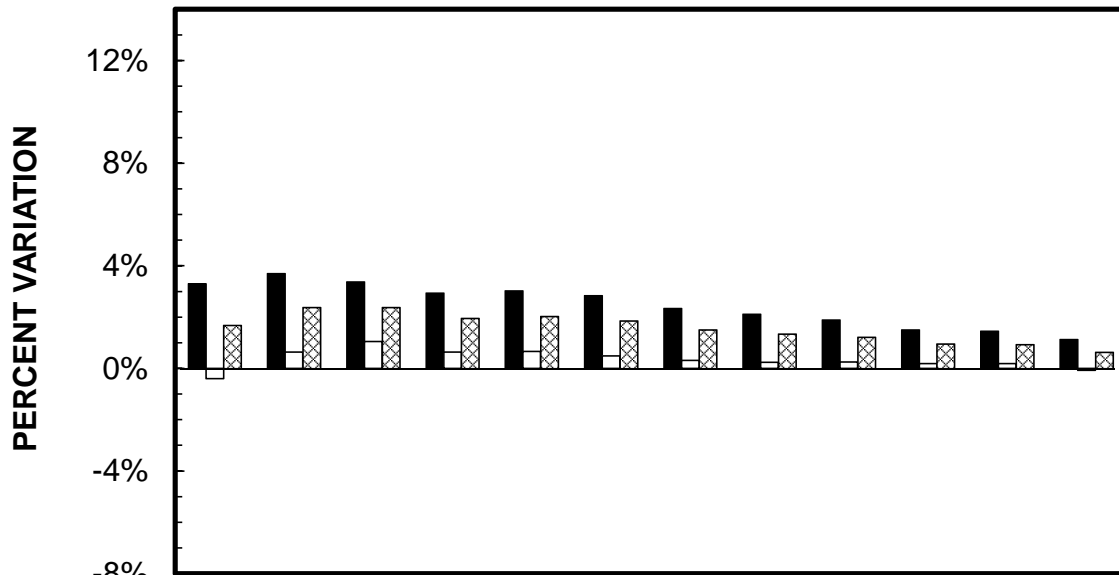
2012 vs 2011



	JAN	FEB	MAR	APR	MAY	JUN	JUL	AUG	SEP	OCT	NOV	DEC
■ RURAL	3.29%	4.07%	2.79%	1.74%	3.32%	2.01%	-0.34%	0.66%	0.18%	-1.92%	0.83%	-3.35%
□ MUNICIPAL	-0.39%	1.65%	1.80%	-0.55%	0.77%	-0.36%	-0.73%	-0.27%	0.36%	-0.46%	0.20%	-3.44%
⊠ STATE TOTAL	1.68%	3.04%	2.37%	0.79%	2.29%	1.07%	-0.49%	0.29%	0.25%	-1.33%	0.57%	-3.39%

CUMULATIVE MONTHLY TRAFFIC VARIATIONS

2012 vs 2011



	JAN	FEB	MAR	APR	MAY	JUN	JUL	AUG	SEP	OCT	NOV	DEC
■ RURAL	3.29%	3.69%	3.36%	2.93%	3.02%	2.83%	2.33%	2.11%	1.88%	1.50%	1.44%	1.13%
□ MUNICIPAL	-0.39%	0.64%	1.04%	0.63%	0.66%	0.49%	0.31%	0.24%	0.25%	0.18%	0.18%	-0.07%
⊠ STATE TOTAL	1.68%	2.38%	2.38%	1.96%	2.03%	1.86%	1.50%	1.34%	1.22%	0.96%	0.93%	0.64%

COMPARISON OF ESTIMATED VMT BY SYSTEM (IN 1,000,000's)

	JAN %dif	FEB %dif	MAR %dif	APR %dif	MAY %dif	JUN %dif	JUL %dif	AUG %dif	SEP %dif	OCT %dif	NOV %dif	DEC %dif	CUMULATIVE	%dif
RURAL INTERSTATE														
2012	367	390	421	417	475	491	518	506	440	442	412	334	5213	
2011	357 2.8%	379 2.9%	415 1.4%	411 1.5%	463 2.6%	479 2.5%	524 -1.1%	507 -0.2%	445 -1.1%	445 -0.7%	406 1.5%	347 -3.7%	5178	0.7%
RURAL PRIMARY														
2012	605	639	702	701	767	748	750	722	721	692	641	534	8222	
2011	594 1.9%	615 3.9%	685 2.5%	689 1.7%	743 3.2%	733 2.0%	743 0.9%	714 1.1%	722 -0.1%	699 -1.0%	633 1.3%	546 -2.2%	8116	1.3%
RURAL SECONDARY														
2012	379	430	461	460	534	484	466	449	497	451	409	316	5336	
2011	357 6.2%	408 5.4%	441 4.5%	451 2.0%	513 4.1%	477 1.5%	473 -1.5%	445 0.9%	488 1.8%	472 -4.4%	411 -0.5%	332 -4.8%	5268	1.3%
RURAL SUBTOTAL														
2012	1351	1459	1584	1578	1776	1723	1734	1677	1658	1585	1462	1184	18771	
2011	1308 3.3%	1402 4.1%	1541 2.8%	1551 1.7%	1719 3.3%	1689 2.0%	1740 -0.3%	1666 0.7%	1655 0.2%	1616 -1.9%	1450 0.8%	1225 -3.3%	18562	1.1%
MUNICIPAL INTERSTATE														
2012	202	215	226	215	223	227	213	230	220	213	202	155	2541	
2011	203 -0.5%	211 1.9%	224 0.9%	213 0.9%	220 1.4%	224 1.3%	210 1.4%	226 1.8%	220 0.0%	214 -0.5%	200 1.0%	161 -3.7%	2526	0.6%
MUNICIPAL PRIMARY														
2012	282	282	312	300	342	331	336	318	297	287	272	244	3603	
2011	279 1.1%	276 2.2%	304 2.6%	299 0.3%	342 0.0%	331 0.0%	338 -0.6%	322 -1.2%	297 0.0%	291 -1.4%	271 0.4%	257 -5.1%	3607	-0.1%
MUNICIPAL STREETS														
2012	527	550	596	577	607	553	537	578	583	587	530	471	6696	
2011	533 -1.1%	543 1.3%	586 1.7%	586 -1.5%	601 1.0%	560 -1.3%	546 -1.6%	581 -0.5%	579 0.7%	587 0.0%	531 -0.2%	483 -2.5%	6716	-0.3%
MUNICIPAL SUBTOTAL														
2012	1011	1047	1134	1092	1172	1111	1086	1126	1100	1087	1004	870	12840	
2011	1015 -0.4%	1030 1.7%	1114 1.8%	1098 -0.5%	1163 0.8%	1115 -0.4%	1094 -0.7%	1129 -0.3%	1096 0.4%	1092 -0.5%	1002 0.2%	901 -3.4%	12849	-0.1%
STATE TOTAL														
2012	2362	2506	2718	2670	2948	2834	2820	2803	2758	2672	2466	2054	31611	
2011	2323 1.7%	2432 3.0%	2655 2.4%	2649 0.8%	2882 2.3%	2804 1.1%	2834 -0.5%	2795 0.3%	2751 0.3%	2708 -1.3%	2452 0.6%	2126 -3.4%	31411	0.6%

**IOWA DEPARTMENT OF TRANSPORTATION
ESTIMATED 2012 VEHICLE MILES OF TRAVEL**
(IN 1,000,000's)

MONTH	RURAL				MUNICIPAL				STATE TOTAL
	INTERSTATE	PRIMARY	SECONDARY	TOTAL	INTERSTATE	PRIMARY	SECONDARY	TOTAL	
JANUARY	367	605	379	1351	202	282	527	1011	2362
FEBRUARY	390	639	430	1459	215	282	550	1047	2506
MARCH	421	702	461	1584	226	312	596	1134	2718
APRIL	417	701	460	1578	215	300	577	1092	2670
MAY	475	767	534	1776	223	342	607	1172	2948
JUNE	491	748	484	1723	227	331	553	1111	2834
JULY	518	750	466	1734	213	336	537	1086	2820
AUGUST	506	722	449	1677	230	318	578	1126	2803
SEPTEMBER	440	721	497	1658	220	297	583	1100	2758
OCTOBER	442	692	451	1585	213	287	587	1087	2672
NOVEMBER	412	641	409	1462	202	272	530	1004	2466
DECEMBER	334	534	316	1184	155	244	471	870	2054
SUBTOTAL	5213	8222	5336	18771	2541	3603	6696	12840	31611

**COMPARISON OF THE MONTHLY AVERAGE DAILY TRAFFIC (MADT) FOR 2012 AND 2011
AND ANNUAL AVERAGE DAILY TRAFFIC (AADT)**

RURAL INTERSTATE

LOCATION AND STATION NUMBER		JAN. MADT	FEB. MADT	MARCH MADT	APRIL MADT	MAY MADT	JUNE MADT	JULY MADT	AUG. MADT	SEPT. MADT	OCT. MADT	NOV. MADT	DEC. MADT	ANNUAL AADT
I 29 2.0 MI NORTH OF SOUTH JCT. I 680 HONEY CREEK 100-78	2012	16243	16227	18625	19399	21800	22073	22363	21885	20474	20186	19667	17819	
	2011	16349	17200	19207	20340	21631	NO DATA	NO DATA	NO DATA	NO DATA	NO DATA	18703	17670	NO AADT
	%	-0.65%	-5.66%	-3.03%	-4.63%	0.78%								
I 29 4.0 MI SOUTH OF SOUTH JCT. US 34 PACIFIC JUNCTION 102-65	2012	9275	9578	11333	11674	13275	13999	13841	13063	12152	12501	12369	11031	
	2011	8579	9095	11039	11403	12337	NO DATA	NO DATA	NO DATA	NO DATA	NO DATA	11504	10826	NO AADT
	%	8.11%	5.31%	2.66%	2.38%	7.60%								
I 80 7.4 MI EAST OF IA 146 GRINNELL 103-79	2012	19684	20931	24016	24898	27811	29812	30410	31272	28022	26676	26749	22276	
	2011	19545	20350	23982	24870	27371	29236	30969	31511	28150	26712	26646	23195	26045
	%	0.71%	2.86%	0.14%	0.11%	1.61%	1.97%	-1.81%	-0.76%	-0.45%	-0.13%	0.39%	-3.96%	
I 35 3.0 MI NORTH OF IA 175 JEWELL 104-40	2012	16553	17965	20756	21581	22749	23959	24499	24923	21785	21839	22143	18498	
	2011	15989	16963	19789	20792	21971	23771	24879	24882	22536	22066	21941	19400	21248
	%	3.53%	5.91%	4.89%	3.79%	3.54%	0.79%	-1.53%	0.16%	-3.33%	-1.03%	0.92%	-4.65%	
I 29 3.8 MI SOUTH OF IA 175 ONAWA 105-67	2012	9560	9837	11435	12076	13690	14547	15140	14822	13162	12918	12711	11147	
	2011	9414	10079	11520	12102	13277	NO DATA	NO DATA	NO DATA	NO DATA	NO DATA	12022	10939	NO AADT
	%	1.55%	-2.40%	-0.74%	-0.21%	3.11%								
I 35 1.5 MI NORTH OF IA 2 LEON 106-27	2012	10016	10300	12538	12527	13517	14255	14666	13859	12420	12993	13464	11839	
	2011	9830	9892	12626	12370	13127	14483	15226	14004	13108	13022	13600	12113	12783
	%	1.89%	4.12%	-0.70%	1.27%	2.97%	-1.57%	-3.68%	-1.04%	-5.25%	-0.22%	-1.00%	-2.26%	
I 35 3.0 MI NORTH OF CO RD B20 HANLONTOWN 109-17	2012	14725	15487	18215	18861	20268	22370	23028	22562	19908	19471	19243	16914	
	2011	14388	14818	17912	18545	19633	22327	23367	22619	20436	19764	19063	17426	19192
	%	2.34%	4.51%	1.69%	1.70%	3.23%	0.19%	-1.45%	-0.25%	-2.58%	-1.48%	0.94%	-2.94%	
I 80 1.5 MI WEST OF CO RD M16 SHELBY 110-78	2012	NO DATA	NO DATA	NO DATA	NO DATA	24636	27048	27191	27374	24483	23311	22629	19611	NO AADT
	2011	16498	17084	20069	20464	NO DATA	NO DATA	NO DATA	NO DATA	NO DATA	NO DATA	NO DATA	NO DATA	NO AADT
	%													
I 80 2.0 MI EAST OF IA 149 WILLIAMSBURG 111-48	2012	23492	25138	NO DATA	NO DATA	NO DATA	35003	34687	36355	32441	31130	31468	26730	NO AADT
	2011	NO DATA	NO DATA	NO DATA	29159	32219	34211	35396	36046	32761	31562	31186	27976	NO AADT
	%						2.32%	-2.00%	0.86%	-0.98%	-1.37%	0.90%	-4.45%	
I 380 3.8 MI NORTH OF IA 150 BRANDON 113-06	2012	12982	14293	15400	15940	16510	17167	17661	17511	16673	16252	16274	14198	
	2011	12934	13215	15208	15616	15859	17015	17577	17508	16851	16595	16424	14752	15796
	%	0.37%	8.16%	1.26%	2.07%	4.10%	0.89%	0.48%	0.02%	-1.06%	-2.07%	-0.91%	-3.76%	
I 80 2.0 MI EAST OF US 71 ATLANTIC 115-15	2012	14748	15039	18027	18833	21292	23640	24038	24268	21208	19932	19426	16428	
	2011	14267	14684	17790	18444	20440	22600	24444	24500	21841	20388	19324	17207	19661
	%	3.37%	2.42%	1.33%	2.11%	4.17%	4.60%	-1.66%	-0.95%	-2.90%	-2.24%	0.53%	-4.53%	

**COMPARISON OF THE MONTHLY AVERAGE DAILY TRAFFIC (MADT) FOR 2012 AND 2011
AND ANNUAL AVERAGE DAILY TRAFFIC (AADT)**

RURAL INTERSTATE

LOCATION AND STATION NUMBER		JAN. MADT	FEB. MADT	MARCH MADT	APRIL MADT	MAY MADT	JUNE MADT	JULY MADT	AUG. MADT	SEPT. MADT	OCT. MADT	NOV. MADT	DEC. MADT	ANNUAL AADT
I 80 0.8 MI WEST OF JORDAN CREEK PARKWAY WAUKEE 116-25	2012	29132	29606	33116	34973	37836	40559	40480	41183	36994	36512	35183	30752	35272
	2011	27702	28789	32402	34069	36755	39359	40677	41343	37917	36866	34777	32612	
	%	5.16%	2.84%	2.20%	2.65%	2.94%	3.05%	-0.48%	-0.39%	-2.43%	-0.96%	1.17%	-5.70%	
I 80 1.8 MI EAST OF EAST JCT. I 35/80/235 ALTOONA 117-77	2012	63521	66016	70555	73801	78095	82046	80471	81982	76494	75729	73906	65587	73105
	2011	60912	64242	69493	72360	75657	79271	80199	81174	76001	75080	73145	69720	
	%	4.28%	2.76%	1.53%	1.99%	3.22%	3.50%	0.34%	1.00%	0.65%	0.86%	1.04%	-5.93%	
I 80 1.5 MI EAST OF MIDDLE ROAD LECLAIRE 119-82	2012	23393	24442	27816	28777	31184	34309	34289	35403	32525	31205	30027	26366	29604
	2011	21950	21958	26059	28009	32258	34213	35119	35693	32188	31134	29610	27055	
	%	6.57%	11.31%	6.74%	2.74%	-3.33%	0.28%	-2.36%	-0.81%	1.05%	0.23%	1.41%	-2.55%	
I 80 2.5 MI EAST OF CO RD X40 TIPTON 120-16	2012	25353	27051	30171	31263	33831	35949	36540	37044	32756	32811	32582	28211	NO AADT
	2011	25216	26782	29873	30441	33119	33379	NO DATA	NO DATA	NO DATA	33187	32491	29199	
	%	0.54%	1.00%	1.00%	2.70%	2.15%	7.70%				-1.13%	0.28%	-3.38%	
I 35 2.0 MI NORTH OF CO RD R75 DOWS 121-99	2012	10739	11328	13442	14001	15265	16752	17137	16924	14571	14421	14297	12360	14291
	2011	10621	11019	13148	13779	14654	16561	17737	17113	15243	14838	14345	12790	
	%	1.11%	2.80%	2.24%	1.61%	4.17%	1.15%	-3.38%	-1.10%	-4.41%	-2.81%	-0.33%	-3.36%	
I 35 1.0 MI NORTH OF IA 92 CUMMING 122-92	2012	17920	17763	20494	20948	22406	23154	23130	22607	21101	21826	22028	19664	21105
	2011	17569	17496	20701	20878	21740	23167	23641	22834	21699	21983	21498	20054	
	%	2.00%	1.53%	-1.00%	0.34%	3.06%	-0.06%	-2.16%	-0.99%	-2.76%	-0.71%	2.47%	-1.94%	
I 80 4.8 MI EAST OF EAST JCT. US 65 MITCHELLVILLE 123-77	2012	28125	29586	33020	34144	37621	40070	39986	41264	37117	36105	35486	30508	35061
	2011	27458	28518	32698	33891	36607	39064	40084	41409	37183	36258	35392	32171	
	%	2.43%	3.75%	0.98%	0.75%	2.77%	2.58%	-0.24%	-0.35%	-0.18%	-0.42%	0.27%	-5.17%	
I 680 6.4 MI WEST OF I 80 BEEBEETOWN 124-78	2012	4464	4489	5330	5815	6553	6972	6859	7023	6290	6221	6156	5188	NO AADT
	2011	4292	5043	5612	5857	6348	6736	NO DATA	NO DATA	NO DATA	NO DATA	5731	5038	
	%	4.01%	-10.99%	-5.02%	-0.72%	3.23%	3.50%					7.42%	2.98%	
I 380 6.0 MI NORTH OF I 80 NORTH LIBERTY 125-52	2012	42426	46263	47947	49963	49640	50483	49236	51044	51097	50322	49510	44255	NO AADT
	2011	NO DATA	NO DATA	NO DATA	NO DATA	NO DATA	NO DATA	NO DATA	NO DATA	NO DATA	NO DATA	48530	45714	
	%											2.02%	-3.19%	
TOTAL RURAL INTERSTATE	2012	326433	339938	384289	399511	433703	446017	404482	410113	371259	396902	492689	429771	
	2011	317015	330143	379059	393766	422784	435393	409315	410636	375914	399455	485932	445857	
	%	2.97%	2.97%	1.38%	1.46%	2.58%	2.44%	-1.18%	-0.13%	-1.24%	-0.64%	1.39%	-3.61%	

NOTE: Numbers in red denote estimated traffic due to road construction, inaccurate, or insufficient data. Monthly data for sites without comparable data are not include in TOTAL.

**COMPARISON OF THE MONTHLY AVERAGE DAILY TRAFFIC (MADT) FOR 2012 AND 2011
AND ANNUAL AVERAGE DAILY TRAFFIC (AADT)**

RURAL PRIMARY

LOCATION AND STATION NUMBER		JAN. MADT	FEB. MADT	MARCH MADT	APRIL MADT	MAY MADT	JUNE MADT	JULY MADT	AUG. MADT	SEPT. MADT	OCT. MADT	NOV. MADT	DEC. MADT	ANNUAL AADT
US 65 2.7 MI NORTH OF IA 3 HAMPTON 201-35	2012	2400	2525	2746	2894	3075	3038	2986	2931	2909	2908	2782	2576	2786
	2011	2390	2505	2684	2806	2997	3080	2926	2891	2838	2894	2735	2687	
	%	0.42%	0.80%	2.31%	3.14%	2.60%	-1.36%	2.05%	1.38%	2.50%	0.48%	1.72%	-4.13%	
US 71 2.0 MI NORTH OF IA 44 HAMLIN 202-05	2012	3017	2973	3427	3568	3775	3841	3801	3779	3681	3583	3457	3164	NO AADT
	2011	2991	3029	3340	3593	3740	3842	NO DATA	NO DATA	NO DATA	NO DATA	3525	3299	
	%	0.87%	-1.85%	2.60%	-0.70%	0.94%	-0.03%					-1.93%	-4.09%	
US 75 3.1 MI NORTH OF CO RD C60 HINTON 204-75	2012	11527	11706	12812	13010	13426	13944	14041	13806	13085	12845	12884	12353	NO AADT
	2011	11283	11767	12464	13041	13271	NO DATA	NO DATA	NO DATA	12656	12758	12439	12418	
	%	2.16%	-0.52%	2.79%	-0.24%	1.17%				3.39%	0.68%	3.58%	-0.52%	
US 218 1.7 MI SOUTH OF IA 78 SWEDESBURG 205-44	2012	9894	10684	11720	11745	12842	12556	12555	12544	12046	11953	11983	11050	11809
	2011	9786	10044	11656	11766	11999	12590	12711	12497	12891	12090	11981	11306	
	%	1.10%	6.37%	0.55%	-0.18%	7.03%	-0.27%	-1.23%	0.38%	-6.55%	-1.13%	0.02%	-2.26%	
US 30 AT BOONE/STORY CO LINE NAPIER 206-85	2012	12102	12578	13029	13893	14257	14456	14325	15079	15408	14599	14054	13384	NO AADT
	2011	11510	11556	12068	NO DATA	NO DATA	NO DATA	NO DATA	NO DATA	NO DATA	NO DATA	13181	12086	
	%	5.14%	8.84%	7.96%								6.62%	10.74%	
US 18 2.2 MI EAST OF US 169 ALGONA 207-55	2012	2883	2954	3181	3316	3576	3676	4297	3626	3821	3511	3382	3104	3402
	2011	2800	2847	3020	3273	3470	3768	4007	3730	3821	3505	3363	3221	
	%	2.96%	3.76%	5.33%	1.31%	3.05%	-2.44%	7.24%	-2.79%	0.00%	0.17%	0.56%	-3.63%	
US 6 3.0 MI EAST OF CO V66 MARENGO 208-48	2012	2663	2812	3105	3274	3442	3563	3574	3402	3339	3282	3106	2868	NO AADT
	2011	2743	2771	3005	3210	NO DATA	NO DATA	NO DATA	NO DATA	NO DATA	NO DATA	2998	2952	
	%	-2.92%	1.48%	3.33%	1.99%							3.60%	-2.85%	
US 67 1.5 MI SOUTH OF CO RD F45 PRINCETON 209-82	2012	3586	3923	4211	4432	4612	4862	4735	4610	4421	4302	4014	3726	4264
	2011	3631	3669	4039	4212	4408	4616	4708	4884	4495	4617	3989	3899	
	%	-1.24%	6.92%	4.26%	5.22%	4.63%	5.33%	0.57%	-5.61%	-1.65%	-6.82%	0.63%	-4.44%	
US 18 4.2 MI EAST OF IA 60 SHELDON 210-71	2012	3695	3738	4046	4278	4429	4709	4489	4461	4653	4185	3992	3805	4109
	2011	3572	3656	3810	4070	4217	4403	4426	4384	4700	4265	3933	3868	
	%	3.44%	2.24%	6.19%	5.11%	5.03%	6.95%	1.42%	1.76%	-1.00%	-1.88%	1.50%	-1.63%	

**COMPARISON OF THE MONTHLY AVERAGE DAILY TRAFFIC (MADT) FOR 2012 AND 2011
AND ANNUAL AVERAGE DAILY TRAFFIC (AADT)**

RURAL PRIMARY

LOCATION AND STATION NUMBER		JAN. MADT	FEB. MADT	MARCH MADT	APRIL MADT	MAY MADT	JUNE MADT	JULY MADT	AUG. MADT	SEPT. MADT	OCT. MADT	NOV. MADT	DEC. MADT	ANNUAL AADT
IA 92 0.6 MI WEST OF CO RD V45 SIGOURNEY 212-54	2012	2202	2297	2504	2554	2763	2670	2637	2721	NO DATA	NO DATA	2349	2192	NO AADT
	2011	2221	2257	2519	2688	2837	2735	2694	2716	2653	2690	2477	2357	2570
	%	-0.86%	1.77%	-0.60%	-4.99%	-2.61%	-2.38%	-2.12%	0.18%			-5.17%	-7.00%	
US 30 1.8 MI EAST OF US 65 COLO 213-85	2012	4819	5121	5329	5767	6049	6158	5998	6141	6355	6141	5830	4924	NO AADT
	2011	NO DATA	NO DATA	NO DATA	NO DATA	5370	5806	5810	6056	6202	6061	5668	5117	NO AADT
	%					12.64%	6.06%	3.24%	1.40%	2.47%	1.32%	2.86%	-3.77%	
US 61 3.8 MI NORTH OF US 34 BURLINGTON 214-29	2012	5821	6175	6566	6803	6938	7121	6911	6738	6724	6696	6526	6088	6520
	2011	5793	5779	6492	6709	6850	7064	6910	6739	6631	6663	6326	6280	6520
	%	0.48%	6.85%	1.14%	1.40%	1.28%	0.81%	0.01%	-0.01%	1.40%	0.50%	3.16%	-3.06%	
US 34/169 2.5 MI EAST OF WEST JCT US 169 AFTON 216-88	2012	3424	3458	3661	4003	4204	4182	3916	3952	4095	3998	3864	3384	3864
	2011	3283	3387	3621	3920	4077	4101	4004	4096	4289	4171	3837	3585	3864
	%	4.29%	2.10%	1.10%	2.12%	3.12%	1.98%	-2.20%	-3.52%	-4.52%	-4.15%	0.70%	-5.61%	
IA 122 2.5 MI EAST OF I 35 CLEAR LAKE 217-17	2012	11996	12903	13167	13819	14442	14777	15101	14677	13823	13549	13428	13200	13763
	2011	12201	12724	12902	13710	14415	14829	14937	14555	13858	13759	13379	13884	13763
	%	-1.68%	1.41%	2.05%	0.80%	0.19%	-0.35%	1.10%	0.84%	-0.25%	-1.53%	0.37%	-4.93%	
IA 44 0.2 MI WEST OF US 169 ADEL 218-25	2012	2909	2860	3185	3471	3901	4066	4276	4012	3776	3722	3513	3017	3476
	2011	2823	2880	3145	3459	3729	3949	4073	3928	3663	3566	3326	3169	3476
	%	3.05%	-0.69%	1.27%	0.35%	4.61%	2.96%	4.98%	2.14%	3.08%	4.37%	5.62%	-4.80%	
US 34 1.0 MI WEST OF I 35 OSCEOLA 219-20	2012	4256	4305	4547	4957	5203	5300	5011	4944	4963	4965	4705	4347	4725
	2011	4039	4183	4493	4792	4944	5024	4981	5001	5105	5008	4663	4472	4725
	%	5.37%	2.92%	1.20%	3.44%	5.24%	5.49%	0.60%	-1.14%	-2.78%	-0.86%	0.90%	-2.80%	
US 52 1.0 MI NORTH OF US 18 POSTVILLE 220-03	2012	1325	1409	1572	1669	1768	1786	1715	1695	1726	1705	1628	1371	1616
	2011	1345	1364	1506	1590	1809	1787	1700	1757	1657	1795	1640	1447	1616
	%	-1.49%	3.30%	4.38%	4.97%	-2.27%	-0.06%	0.88%	-3.53%	4.16%	-5.01%	-0.73%	-5.25%	
IA 9 2.5 MI WEST OF CO RD N52 ARMSTRONG 221-32	2012	1365	1418	1555	1638	1766	1801	1852	1816	1865	1852	1521	1431	NO AADT
	2011	NO DATA	NO DATA	NO DATA	NO DATA	1699	1794	1868	1758	1785	1745	1571	1465	NO AADT
	%					3.94%	0.39%	-0.86%	3.30%	4.48%	6.13%	-3.18%	-2.32%	
IA 3 0.1 MI WEST OF CO RD P66 HUMBOLDT 222-46	2012	1585	1637	1789	NO DATA	NO DATA	1919	1886	1873	1931	1890	1745	1588	NO AADT
	2011	1652	1669	1796	2189	2394	2213	2184	2127	2181	2082	1805	1761	2004
	%	-4.06%	-1.92%	-0.39%			-13.29%	-13.64%	-11.94%	-11.46%	-9.22%	-3.32%	-9.82%	

**COMPARISON OF THE MONTHLY AVERAGE DAILY TRAFFIC (MADT) FOR 2012 AND 2011
AND ANNUAL AVERAGE DAILY TRAFFIC (AADT)**

RURAL PRIMARY

LOCATION AND STATION NUMBER		JAN. MADT	FEB. MADT	MARCH MADT	APRIL MADT	MAY MADT	JUNE MADT	JULY MADT	AUG. MADT	SEPT. MADT	OCT. MADT	NOV. MADT	DEC. MADT	ANNUAL AADT
IA 196 3.0 MI SOUTH OF US 20 SAC CITY 236-81	2012	990	983	1095	1185	1246	1185	1184	1161	1259	1177	1128	1005	
	2011	937	989	1054	1177	1300	1331	1261	NO DATA	NO DATA	NO DATA	1178	1039	NO AADT
	%	5.66%	-0.61%	3.89%	0.68%	-4.15%	-10.97%	-6.11%				-4.24%	-3.27%	
IA 149 2.1 MI NORTH OF IA 78 MARTINSBURG 238-54	2012	1039	1088	1214	1293	1317	1244	1186	1169	NO DATA	NO DATA	1210	1110	
	2011	993	1021	1146	1201	1250	1212	1164	1171	1223	1288	1198	1099	1164
	%	4.63%	6.56%	5.93%	7.66%	5.36%	2.64%	1.89%	-0.17%			1.00%	1.00%	
IA 2 3.0 MI EAST OF US 275 SIDNEY 240-36	2012	1769	1747	1872	1920	1970	2013	1872	1926	1886	1902	1872	1717	
	2011	1698	1750	1889	1947	1984	2163	NO DATA	NO DATA	NO DATA	NO DATA	1938	1837	NO AADT
	%	4.18%	-0.17%	-0.90%	-1.39%	-0.71%	-6.93%					-3.41%	-6.53%	
IA 13 6.3 MI SOUTH OF US 20 RYAN 241-28	2012	3406	3643	3886	4116	4483	4728	4461	4426	4542	4463	4191	3868	
	2011	3481	3394	3844	4083	4342	4644	4596	4410	4353	4560	4078	3917	4142
	%	-2.15%	7.34%	1.09%	0.81%	3.25%	1.81%	-2.94%	0.36%	4.34%	-2.13%	2.77%	-1.25%	
US 61 3.8 MI NORTH OF CO RD F41 ELDRIDGE 242-82	2012	14546	15510	15985	17041	17864	18269	17608	17374	17040	16936	16580	15389	
	2011	14866	14992	16061	16761	16676	17520	17305	17305	16935	17261	16558	16123	16530
	%	-2.15%	3.46%	-0.47%	1.67%	7.12%	4.28%	1.75%	0.40%	0.62%	-1.88%	0.13%	-4.55%	
US 30 0.3 MI EAST OF CO RD Z24 DEWITT 243-23	2012	8738	9205	9605	9883	9991	NO DATA	NO DATA	NO DATA	NO DATA	NO DATA	NO DATA	NO DATA	NO AADT
	2011	8857	8916	9562	9977	9805	9976	9775	10069	9891	10264	9794	9679	9704
	%	-1.34%	3.24%	0.45%	-0.94%	1.90%								
IA 1 0.8 MI SOUTH OF CO RD F67 KALONA 244-52	2012	4891	5125	5536	5697	5939	5972	5673	5657	5707	5640	5516	5071	
	2011	4877	4827	5357	5579	5703	5942	5740	5731	5698	5661	5439	5360	5439
	%	0.29%	6.17%	3.34%	2.12%	4.14%	0.50%	-1.17%	-1.29%	0.16%	-0.37%	1.42%	-5.39%	
US 20 1.5 MI EAST OF CO RD V62 JESUP 245-07	2012	9182	9936	10450	10810	10635	NO DATA	NO DATA	NO DATA	11119	11028	10718	9565	
	2011	9534	9696	10489	10884	11188	11718	12021	12016	11714	11611	11014	10343	11052
	%	-3.69%	2.48%	-0.37%	-0.68%	-4.94%				-5.08%	-5.02%	-2.69%	-7.52%	
IA 141 1.0 MI EAST OF WILLIS AVE PERRY 246-25	2012	8382	8737	9010	9472	9951	10374	10123	10423	10011	9968	9805	8718	
	2011	8153	8652	8936	9499	9807	9717	9342	9779	9411	9467	9243	9068	9256
	%	2.81%	0.98%	0.83%	-0.28%	1.47%	6.76%	8.36%	6.59%	6.38%	5.29%	6.08%	-3.86%	
US 20 3.0 MI EAST OF EAST JCT IA 17 WEBSTER CITY 247-40	2012	6594	7092	7801	8204	8591	NO DATA	NO DATA	NO DATA	NO DATA	NO DATA	NO DATA	7402	NO AADT
	2011	6437	6795	7462	7853	8322	8435	NO DATA	NO DATA	NO DATA	NO DATA	8514	7623	NO AADT
	%	2.44%	4.37%	4.54%	4.47%	3.23%							-2.90%	

**COMPARISON OF THE MONTHLY AVERAGE DAILY TRAFFIC (MADT) FOR 2012 AND 2011
AND ANNUAL AVERAGE DAILY TRAFFIC (AADT)**

RURAL PRIMARY

LOCATION AND STATION NUMBER		JAN. MADT	FEB. MADT	MARCH MADT	APRIL MADT	MAY MADT	JUNE MADT	JULY MADT	AUG. MADT	SEPT. MADT	OCT. MADT	NOV. MADT	DEC. MADT	ANNUAL AADT
IA 21 2.8 MI NORTH OF US 6	2012	975	1017	1113	1217	1304	1268	1244	1230	1215	1207	1151	1013	
BELLE PLAINE	2011	991	964	1074	1164	1257	1244	1264	1265	1235	1242	1158	1056	1159
248-48	%	-1.61%	5.50%	3.63%	4.55%	3.74%	1.93%	-1.58%	-2.77%	-1.62%	-2.82%	-0.60%	-4.07%	
US 218 3.5 MI SOUTH OF IA 921	2012	17379	18168	19156	19806	20279	20712	20492	20545	19985	19890	19886	18831	
HILLS	2011	17342	17626	19512	19800	20052	20727	20745	20669	20446	20151	19598	19072	19698
249-52	%	0.21%	3.08%	-1.82%	0.03%	1.13%	-0.07%	-1.22%	-0.60%	-2.25%	-1.30%	1.47%	-1.26%	
US 65 1.5 MI NORTH OF IA 163	2012	21892	22562	23794	25187	26314	27414	26319	29145	25879	25447	24763	22279	
PLEASANT HILL	2011	20963	21898	22949	24807	25926	27096	26516	28812	26201	26053	24882	23337	24953
250-77	%	4.43%	3.03%	3.68%	1.53%	1.50%	1.17%	-0.74%	1.16%	-1.23%	-2.33%	-0.48%	-4.53%	
US 18/63 0.5 MI SOUTH OF CO RD B54	2012	4323	4551	4968	5168	5486	5674	5559	5617	5440	5372	5215	4726	
NEW HAMPTON	2011	4401	4321	4817	5010	5198	5476	5530	5483	5413	5412	5276	4848	5099
252-19	%	-1.77%	5.32%	3.13%	3.15%	5.54%	3.62%	0.52%	2.44%	0.50%	-0.74%	-1.16%	-2.52%	
US 218 3.5 MI SOUTH OF CO RD T64	2012	7259	7874	8811	9165	10022	10621	10639	10194	9542	9221	9124	8150	
CHARLES CITY	2011	7123	7269	8493	8825	9319	10231	10531	10316	9804	9563	9413	8342	9123
253-34	%	1.91%	8.32%	3.74%	3.85%	7.54%	3.81%	1.03%	-1.18%	-2.67%	-3.58%	-3.07%	-2.30%	
IA 60 4.1 MI NORTH OF IA 9	2012	2556	2565	NO DATA	NO DATA	NO DATA	NO DATA	NO DATA	NO DATA	NO DATA	NO DATA	NO DATA	NO DATA	NO AADT
SIBLEY	2011	2742	2797	3208	3402	3330	NO DATA	NO DATA	NO DATA	NO DATA	NO DATA	2999	2856	NO AADT
254-72	%	-6.78%	-8.29%											
US 20 1.0 MI EAST OF US 65	2012	6917	7472	8233	8554	9095	9029	9628	9501	9000	9050	9224	7593	
IOWA FALLS	2011	6637	7030	7887	8390	8691	9246	9056	9424	9080	9202	9307	8015	8497
255-42	%	4.22%	6.29%	4.39%	1.95%	4.65%	-2.35%	6.32%	0.82%	-0.88%	-1.65%	-0.89%	-5.27%	
US 18 3.3 MI EAST OF I 35	2012	6237	6705	7452	7984	8338	9179	9507	9167	8418	8038	8314	7012	
MASON CITY	2011	6050	6295	7312	7684	8200	8698	9578	9049	8424	8246	8102	7300	7911
256-17	%	3.09%	6.51%	1.91%	3.90%	1.68%	5.53%	-0.74%	1.30%	-0.07%	-2.52%	2.62%	-3.95%	
US 20 3.6 MI WEST OF WEST JCT US 59	2012	2594	2652	2919	2989	3203	3312	3188	3219	3037	3056	3122	2969	
HOLSTEIN	2011	2547	2721	2798	2977	3180	3303	NO DATA	NO DATA	NO DATA	NO DATA	3117	2952	NO AADT
257-47	%	1.85%	-2.54%	4.32%	0.40%	0.72%	0.27%					0.16%	0.58%	
US 30 0.6 MI EAST OF CO RD V66	2012	5342	5884	6219	6701	6994	7175	7033	7241	7026	6614	6595	5808	
BLAIRSTOWN	2011	NO DATA	NO DATA	NO DATA	NO DATA	6537	6690	6650	6959	6929	6671	6459	6036	NO AADT
258-06	%					6.99%	7.25%	5.76%	4.05%	1.40%	-0.85%	2.11%	-3.78%	

**COMPARISON OF THE MONTHLY AVERAGE DAILY TRAFFIC (MADT) FOR 2012 AND 2011
AND ANNUAL AVERAGE DAILY TRAFFIC (AADT)**

RURAL PRIMARY

LOCATION AND STATION NUMBER		JAN. MADT	FEB. MADT	MARCH MADT	APRIL MADT	MAY MADT	JUNE MADT	JULY MADT	AUG. MADT	SEPT. MADT	OCT. MADT	NOV. MADT	DEC. MADT	ANNUAL AADT
US 30 3.5 MI EAST OF IA 1	2012	4897	5201	5595	5949	6241	6430	6227	6109	6066	6018	5826	5180	
LISBON	2011	4993	4965	5483	5774	6082	6200	6039	6246	6015	5998	5675	5397	5739
259-16	%	-1.92%	4.75%	2.04%	3.03%	2.61%	3.71%	3.11%	-2.19%	0.85%	0.33%	2.66%	-4.02%	
US 71 0.6 MI SOUTH OF CO RD J64	2012	2114	2124	2366	2534	2533	2363	2496	2421	2501	2560	2593	2238	
BRADDYVILLE	2011	1966	2095	2293	2408	2452	2550	NO DATA	NO DATA	NO DATA	NO DATA	2504	2296	NO AADT
260-73	%	7.53%	1.38%	3.18%	5.23%	3.30%	-7.33%					3.55%	-2.53%	
US 169 2.3 MI NORTH OF CO RD D14	2012	NO DATA	NO DATA	NO DATA	NO DATA	NO DATA	5830	5886	5871	5750	5737	5553	5259	NO AADT
FORT DODGE	2011	NO DATA	NO DATA	NO DATA	NO DATA	NO DATA	NO DATA	NO DATA	NO DATA	NO DATA	NO DATA	NO DATA	NO DATA	NO AADT
261-94	%													
US 63 1.6 MI SOUTH OF IA 2	2012	1843	1931	2141	2199	2410	2465	2523	2400	2282	2224	2271	2011	
BLOOMFIELD	2011	1764	1817	2108	2247	2374	2500	2635	2470	2401	2343	2314	2065	2253
262-26	%	4.48%	6.27%	1.57%	-2.14%	1.52%	-1.40%	-4.25%	-2.83%	-4.96%	-5.08%	-1.86%	-2.62%	
US 52 0.3 MI EAST OF CO RD X47	2012	1917	1998	2175	2285	2572	2700	2633	2622	2647	2600	2385	2045	
GARNAVILLO	2011	NO DATA	NO DATA	NO DATA	NO DATA	NO DATA	2540	2554	2586	2729	3081	2529	2110	NO AADT
263-22	%						6.30%	3.09%	1.39%	-3.00%	-15.61%	-5.69%	-3.08%	
IA 27 3.0 MI SOUTH OF CO RD W62	2012	4728	4883	6006	5742	6236	6546	6620	6276	5751	5793	5743	5244	
ARGYLE	2011	4428	4541	5684	5437	5930	6217	6986	5932	6036	5846	5650	5129	5651
264-56	%	6.78%	7.53%	5.67%	5.61%	5.16%	5.29%	-5.24%	5.80%	-4.72%	-0.91%	1.65%	2.24%	
US 61 1.0 MI NORTH OF CO RD E17	2012	6275	6725	7192	7572	7922	8357	8467	8194	7890	7835	7390	6624	
MAQUOKETA	2011	6287	6343	7077	7479	7564	8107	8361	8016	7882	7921	7510	7053	7444
265-49	%	-0.19%	6.02%	1.62%	1.24%	4.73%	3.08%	1.27%	2.22%	0.10%	-1.09%	-1.60%	-6.08%	
IA 2 0.8 MI WEST OF US 63	2012	1355	1372	1506	1612	1653	1664	1651	1629	1677	1605	1541	1421	
WEST GROVE	2011	1305	1316	1502	1598	1688	1624	1701	1583	1650	1660	1547	1421	1550
266-26	%	3.83%	4.26%	0.27%	0.88%	-2.07%	2.46%	-2.94%	2.91%	1.64%	-3.31%	-0.39%	0.00%	
US 34 3.0 MI WEST OF US 59	2012	4046	3959	4299	4482	4818	4778	4442	4596	4630	4548	4375	4074	
EMERSON	2011	3775	3936	4244	4481	4642	4688	NO DATA	NO DATA	NO DATA	NO DATA	4404	4313	NO AADT
267-65	%	7.18%	0.58%	1.30%	0.02%	3.79%	1.92%					-0.66%	-5.54%	
US 30 4 MI WEST OF CO RD M14	2012	2611	2516	2885	2989	3246	3196	3204	3239	3202	3043	3022	2788	
DOW CITY	2011	NO DATA	NO DATA	NO DATA	NO DATA	3289	3381	NO DATA	NO DATA	NO DATA	NO DATA	2978	2806	NO AADT
268-24	%					-1.31%	-5.47%					1.48%	-0.64%	

**COMPARISON OF THE MONTHLY AVERAGE DAILY TRAFFIC (MADT) FOR 2012 AND 2011
AND ANNUAL AVERAGE DAILY TRAFFIC (AADT)**

RURAL PRIMARY

LOCATION AND STATION NUMBER		JAN. MADT	FEB. MADT	MARCH MADT	APRIL MADT	MAY MADT	JUNE MADT	JULY MADT	AUG. MADT	SEPT. MADT	OCT. MADT	NOV. MADT	DEC. MADT	ANNUAL AADT
US 30 3.6 MI EAST OF IA 144	2012	3712	3741	4117	4390	4763	4878	4697	4837	4814	4456	4466	3741	
GRAND JUNCTION	2011	3487	3654	3890	4230	4418	4784	4808	4816	4861	4550	4512	4101	4343
269-37	%	6.45%	2.38%	5.84%	3.78%	7.81%	1.96%	-2.31%	0.44%	-0.97%	-2.07%	-1.02%	-8.78%	
US 71 3.6 MI SOUTH OF IA 3	2012	2199	2255	2413	2570	3052	2979	3108	3060	3064	2546	2471	2498	
STORM LAKE	2011	2270	2337	2338	2537	2700	2932	NO DATA	NO DATA	NO DATA	NO DATA	2427	2346	NO AADT
270-11	%	-3.13%	-3.51%	3.21%	1.30%	13.04%	1.60%					1.81%	6.48%	
US 18 4.3 MI EAST OF IA 4	2012	2673	2800	3164	3220	3593	3867	3969	3698	3766	3339	3194	2875	
EMMETSBURG	2011	2669	2782	3094	3115	3337	3582	3716	3527	3666	3316	3108	2879	3233
271-74	%	0.15%	0.65%	2.26%	3.37%	7.67%	7.96%	6.81%	4.85%	2.73%	0.69%	2.77%	-0.14%	
US 71 5.2 MI SOUTH OF WEST JCT US 6	2012	2152	2140	2395	2381	2505	2493	2344	2276	2326	2392	2382	2168	
ATLANTIC	2011	1945	2066	2244	2391	2525	2701	NO DATA	NO DATA	NO DATA	NO DATA	2564	2366	NO AADT
272-15	%	10.64%	3.58%	6.73%	-0.42%	-0.79%	-7.70%					-7.10%	-8.37%	
US 34 3.6 MI EAST OF CO RD S56	2012	1817	1799	2022	2103	2304	2383	2337	2174	2275	2187	2118	1867	
RUSSELL	2011	1755	1722	1941	2005	2177	2273	2362	2136	2262	2179	2092	1940	2070
273-59	%	3.53%	4.47%	4.17%	4.89%	5.83%	4.84%	-1.06%	1.78%	0.57%	0.37%	1.24%	-3.76%	
IA 163 2.6 MI WEST OF CO RD G28	2012	9375	9939	10414	11212	11975	11903	11517	12667	11256	11141	11071	10201	
PELLA	2011	8970	9412	9961	10868	11902	11627	11506	12558	11217	11086	10822	10369	10858
274-63	%	4.52%	5.60%	4.55%	3.17%	0.61%	2.37%	0.10%	0.87%	0.35%	0.50%	2.30%	-1.62%	
US 20 0.5 MI WEST OF CENTER AVE	2012	10711	11649	12254	12754	13248	13450	13275	13595	13364	13194	12916	11526	
EPWORTH	2011	10941	10956	11972	12482	13004	13370	13329	13586	13282	13186	12669	12100	12573
275-31	%	-2.10%	6.33%	2.36%	2.18%	1.88%	0.60%	-0.41%	0.07%	0.62%	0.06%	1.95%	-4.74%	
US 63 1.5 MI NORTH OF IA 9	2012	2334	2464	2780	2905	3088	3190	3210	3224	3035	2961	2937	2712	
LIME SPRINGS	2011	2454	2474	2763	2860	3058	3247	3251	3241	3081	2978	2889	2749	2920
276-45	%	-4.89%	-0.40%	0.62%	1.57%	0.98%	-1.76%	-1.26%	-0.52%	-1.49%	-0.57%	1.66%	-1.35%	
US 34 1.1 MI EAST OF IA 16	2012	6970	7364	7934	8049	8482	8671	8423	8598	8329	8197	8098	7449	
AGENCY	2011	6597	6732	7690	7832	8110	8330	8395	8409	8464	8356	8056	7624	7883
277-90	%	5.65%	9.39%	3.17%	2.77%	4.59%	4.09%	0.33%	2.25%	-1.59%	-1.90%	0.52%	-2.30%	
IA 141 0.5 MI NORTH OF IA 44	2012	18799	19157	20299	21542	23577	24152	23174	23804	22667	22210	21553	20198	
GRIMES	2011	17758	18566	19689	21028	22207	22891	22314	22964	21942	21662	20497	19351	20906
278-77	%	5.86%	3.18%	3.10%	2.44%	6.17%	5.51%	3.85%	3.66%	3.30%	2.53%	5.15%	4.38%	

**COMPARISON OF THE MONTHLY AVERAGE DAILY TRAFFIC (MADT) FOR 2012 AND 2011
AND ANNUAL AVERAGE DAILY TRAFFIC (AADT)**

RURAL PRIMARY

LOCATION AND STATION NUMBER		JAN. MADT	FEB. MADT	MARCH MADT	APRIL MADT	MAY MADT	JUNE MADT	JULY MADT	AUG. MADT	SEPT. MADT	OCT. MADT	NOV. MADT	DEC. MADT	ANNUAL AADT
IA 13 1.5 MI NORTH OF CO RD C64 DUNDEE 279-28	2012	1955	2070	2176	2310	2440	2635	2676	2461	2521	2495	2280	2166	2305
	2011	1981	1970	2115	2254	2410	2604	2489	2385	2425	2575	2257	2195	
	%	-1.31%	5.08%	2.88%	2.48%	1.24%	1.19%	7.51%	3.19%	3.96%	-3.11%	1.02%	-1.32%	
IA 2 2.0 MI WEST OF I 35 LEON 280-27	2012	1117	1069	1154	1266	1324	1361	1308	1292	1326	1369	1368	1192	NO AADT
	2011	1018	1043	1184	NO DATA	NO DATA	NO DATA	NO DATA	NO DATA	NO DATA	1468	1348	1184	
	%	9.72%	2.49%	-2.53%							-6.74%	1.48%	0.68%	
US 151 4.4 MI SOUTH OF IA 38 MONTICELLO 281-53	2012	8844	9524	10081	10685	11399	11900	12382	11909	11422	11147	10694	9692	10625
	2011	8905	8957	9934	10430	11055	11478	12200	11450	11243	11330	10498	10016	
	%	-0.69%	6.33%	1.48%	2.44%	3.11%	3.68%	1.49%	4.01%	1.59%	-1.62%	1.87%	-3.23%	
US 52 9.5 MI SOUTH OF IA 62 BELLEVUE 282-49	2012	577	621	749	817	982	1011	1067	1001	997	938	743	597	842
	2011	563	571	717	854	954	960	1058	974	956	1075	753	664	
	%	2.49%	8.76%	4.46%	-4.33%	2.94%	5.31%	0.85%	2.77%	4.29%	-12.74%	-1.33%	-10.09%	
US 61/218 0.8 MI SOUTH OF N JCT US 61/218 KEOKUK 283-56	2012	7279	7685	7937	8110	8349	8525	8164	8446	8219	8301	7714	7376	7666
	2011	6949	7116	7662	7705	7838	8001	7898	8055	7961	7896	7384	7527	
	%	4.75%	8.00%	3.59%	5.26%	6.52%	6.55%	3.37%	4.85%	3.24%	5.13%	4.47%	-2.01%	
IA 9 1.0 MI WEST OF 6TH ST LANSING 284-03	2012	1636	1658	1850	1970	2271	2258	2330	2339	2176	2118	1770	1744	NO AADT
	2011	NO DATA	1614	1723	1945	2242	2283	2321	2365	2139	2196	1860	1786	
	%		2.73%	7.37%	1.29%	1.29%	-1.10%	0.39%	-1.10%	1.73%	-3.55%	-4.84%	-2.35%	
US 20 1.3 MI EAST OF IA 4 ROCKWELL CITY 285-13	2012	2483	2592	2970	3273	3584	3624	3667	3716	3502	3467	4090	3916	NO AADT
	2011	NO DATA	NO DATA	NO DATA	NO DATA	NO DATA	3689	3725	3588	3622	3367	3468	2958	
	%						-1.76%	-1.56%	3.57%	-3.31%	2.97%	17.94%	32.39%	
TOTAL	2012	330067	346958	368441	367673	402625	375289	343166	341868	352382	347319	387148	362228	
	2011	324154	334112	359519	361291	389993	367532	340108	338182	352700	350700	382034	370623	
	%	1.82%	3.84%	2.48%	1.77%	3.24%	2.11%	0.90%	1.09%	-0.09%	-0.96%	1.34%	-2.27%	

NOTE: Numbers in red denote estimated traffic due to road construction, inaccurate, or insufficient data. Monthly data for sites without comparable data are not include in TOTAL.

**COMPARISON OF THE MONTHLY AVERAGE DAILY TRAFFIC (MADT) FOR 2012 AND 2011
AND ANNUAL AVERAGE DAILY TRAFFIC (AADT)**

RURAL COUNTY - PAVED

LOCATION AND STATION NUMBER		JAN. MADT	FEB. MADT	MARCH MADT	APRIL MADT	MAY MADT	JUNE MADT	JULY MADT	AUG. MADT	SEPT. MADT	OCT. MADT	NOV. MADT	DEC. MADT	ANNUAL AADT
CO RD P14 2.7 MI NORTH OF CO RD E33 CHURDAN 300-37	2012	196	197	253	302	318	314	286	287	322	282	258	203	234
	2011	175	176	206	248	270	253	234	226	247	310	257	209	
	%	12.00%	11.93%	22.82%	21.77%	17.78%	24.11%	22.22%	26.99%	30.36%	-9.03%	0.39%	-2.87%	
CO RD S14 0.8 MI SOUTH OF CO RD E29 NEVADA 301-85	2012	863	846	947	1028	1112	1106	1085	1017	1061	1028	949	815	988
	2011	793	810	870	996	1060	1058	1097	1041	1087	1146	1000	903	
	%	8.83%	4.44%	8.85%	3.21%	4.91%	4.54%	-1.09%	-2.31%	-2.39%	-10.30%	-5.10%	-9.75%	
CO RD M55 0.2 MI NORTH OF IA 141 MANILLA 302-24	2012	685	671	798	834	924	876	856	832	815	841	778	661	777
	2011	603	641	742	816	838	846	889	821	783	848	792	701	
	%	13.60%	4.68%	7.55%	2.21%	10.26%	3.55%	-3.71%	1.34%	4.09%	-0.83%	-1.77%	-5.71%	
CO RD K45 2.25 MI SOUTH OF IA 175 ONAWA 303-67	2012	1045	987	1168	1209	NO DATA	NO DATA	NO DATA	1239	1227	1188	1151	987	NO AADT
	2011	901	962	1097	1239	1343	NO DATA	NO DATA	NO DATA	NO DATA	NO DATA	1199	1018	
	%	15.98%	2.60%	6.47%	-2.42%							-4.00%	-3.05%	
CO RD V45 3.5 MI NORTH OF IA 92 SIGOURNEY 304-54	2012	567	581	664	720	722	695	675	674	NO DATA	NO DATA	680	608	652
	2011	546	555	645	712	718	681	677	656	668	719	629	622	
	%	3.85%	4.68%	2.95%	1.12%	0.56%	2.06%	-0.30%	2.74%			8.11%	-2.25%	
CO RD E53 1.75 MI EAST OF IA 25 SCRANTON 306-37	2012	413	424	544	558	602	589	537	550	587	570	508	410	NO AADT
	2011	NO DATA	NO DATA	NO DATA	NO DATA	NO DATA	NO DATA	497	541	524	548	503	408	
	%							8.05%	1.66%	12.02%	4.01%	0.99%	0.49%	
CO RD R38 2.2 MI NORTH OF CO RD C54 CLARION 307-99	2012	1090	1150	1296	1355	1433	1466	1373	1405	1490	1458	1337	1211	NO AADT
	2011	1028	1038	1161	1242	1320	1263	NO DATA	NO DATA	NO DATA	1508	1292	1149	
	%	6.03%	10.79%	11.63%	9.10%	8.56%	16.07%				-3.32%	3.48%	5.40%	
CO RD N32 1.6 MI NORTH OF IA 9 ESTHERVILLE 308-32	2012	263	268	328	361	NO DATA	350	342	368	392	372	328	267	344
	2011	257	262	300	355	379	409	362	360	387	430	331	293	
	%	2.33%	2.29%	9.33%	1.69%		-14.43%	-5.52%	2.22%	1.29%	-13.49%	-0.91%	-8.87%	
CO RD K52 1.5 MI SOUTH OF US 18 HULL 309-84	2012	941	909	1094	1242	1340	1295	1231	1211	1290	1284	1252	1106	1149
	2011	851	903	1122	1301	1344	1339	1289	1163	1189	1219	1082	990	
	%	10.58%	0.66%	-2.50%	-4.53%	-0.30%	-3.29%	-4.50%	4.13%	8.49%	5.33%	15.71%	11.72%	
CO RD Y52 1.5 MI SOUTH OF US 30 GRAND MOUND 310-23	2012	396	415	501	529	617	527	494	495	517	512	513	463	502
	2011	395	383	467	508	585	592	514	504	519	578	512	468	
	%	0.25%	8.36%	7.28%	4.13%	5.47%	-10.98%	-3.89%	-1.79%	-0.39%	-11.42%	0.20%	-1.07%	

**COMPARISON OF THE MONTHLY AVERAGE DAILY TRAFFIC (MADT) FOR 2012 AND 2011
AND ANNUAL AVERAGE DAILY TRAFFIC (AADT)**

RURAL COUNTY - PAVED

LOCATION AND STATION NUMBER		JAN. MADT	FEB. MADT	MARCH MADT	APRIL MADT	MAY MADT	JUNE MADT	JULY MADT	AUG. MADT	SEPT. MADT	OCT. MADT	NOV. MADT	DEC. MADT	ANNUAL AADT
CO RD W12 3.5 MI SOUTH OF US 30 WATKINS 311-06	2012	680	720	791	834	874	859	803	820	837	885	802	682	804
	2011	705	696	780	844	879	872	819	823	821	857	794	753	
	%	-3.55%	3.45%	1.41%	-1.18%	-0.57%	-1.49%	-1.95%	-0.36%	1.95%	3.27%	1.01%	-9.43%	
CO RD E26 2.7 MI WEST OF CO RD R38 BOONE 312-08	2012	1330	1367	1542	1675	1627	1618	1582	1623	1619	1574	1469	1270	NO AADT
	2011	NO DATA	NO DATA	1460	NO DATA	NO DATA	NO DATA	NO DATA	NO DATA	NO DATA	NO DATA	1596	1465	
	%			5.62%								-7.96%	-13.31%	
CO RD D42 0.2 MI EAST OF IA 13 MANCHESTER 313-28	2012	479	498	562	633	711	716	655	651	640	651	598	548	630
	2011	490	483	553	604	716	800	782	680	635	669	600	545	
	%	-2.24%	3.11%	1.63%	4.80%	-0.70%	-10.50%	-16.24%	-4.26%	0.79%	-2.69%	-0.33%	0.55%	
CO RD 105 1.3 MI EAST OF CO RD S56 NORTHWOOD 314-98	2012	637	658	717	783	805	848	779	761	775	774	747	640	767
	2011	623	623	725	794	833	890	837	809	830	826	736	676	
	%	2.25%	5.62%	-1.10%	-1.39%	-3.36%	-4.72%	-6.93%	-5.93%	-6.63%	-6.30%	1.49%	-5.33%	
CO RD 5.5 MI WEST OF US 63 DRAKESVILLE 315-26	2012	493	502	579	671	861	837	907	785	754	690	585	519	665
	2011	475	463	570	652	755	780	914	753	734	736	593	553	
	%	3.79%	8.42%	1.58%	2.91%	14.04%	7.31%	-0.77%	4.25%	2.72%	-6.25%	-1.35%	-6.15%	
CO RD D36 2.8 MI E OF CO N57 ROCKWELL CITY 316-13	2012	1051	1051	1118	1207	1277	1300	1317	1205	1167	1173	1104	918	1201
	2011	1009	999	1166	1242	1297	1330	1248	1218	1252	1325	1203	1126	
	%	4.16%	5.21%	-4.12%	-2.82%	-1.54%	-2.26%	5.53%	-1.07%	-6.79%	-11.47%	-8.23%	-18.47%	
TOTAL RURAL COUNTY PAVED	2012	9386	9453	12358	11708	10994	11189	9967	9656	9157	10520	13059	11308	
	2011	8851	8994	11864	11553	10615	11113	10159	9595	9008	11000	13119	11879	
	%	6.04%	5.10%	4.16%	1.34%	3.57%	0.68%	-1.89%	0.64%	1.65%	-4.36%	-0.46%	-4.81%	

NOTE: Numbers in red denote estimated traffic due to road construction, inaccurate, or insufficient data. Monthly data for sites without comparable data are not include in TOTAL.

**COMPARISON OF THE MONTHLY AVERAGE DAILY TRAFFIC (MADT) FOR 2012 AND 2011
AND ANNUAL AVERAGE DAILY TRAFFIC (AADT)**

RURAL COUNTY - GRAVEL

LOCATION AND STATION NUMBER		JAN. MADT	FEB. MADT	MARCH MADT	APRIL MADT	MAY MADT	JUNE MADT	JULY MADT	AUG. MADT	SEPT. MADT	OCT. MADT	NOV. MADT	DEC. MADT	ANNUAL AADT
CO RD B30 0.5 MI EAST OF CO RD L48 PRIMGHAR 400-71	2012 2011 %	14 15 -6.67%	14 12 16.67%	13 16 -18.75%	19 18 5.56%	23 24 -4.17%	22 23 -4.35%	17 25 -32.00%	18 25 -28.00%	27 29 -6.90%	20 49 -59.18%	18 23 -21.74%	13 18 -27.78%	23
LOCAL ROAD 1.80 MI NORTH OF CO RD E36 CLUTIER 401-86	2012 2011 %	28 28 0.00%	27 25 8.00%	34 26 30.77%	42 31 35.48%	51 39 30.77%	49 36 36.11%	59 43 37.21%	37 50 -26.00%	38 40 -5.00%	46 50 -8.00%	33 35 -5.71%	23 31 -25.81%	36
LOCAL ROAD .80 MI EAST OF CO RD V18 CLUTIER 402-86	2012 2011 %	46 42 9.52%	36 34 5.88%	48 41 17.07%	57 50 14.00%	64 63 1.59%	62 52 19.23%	66 60 10.00%	49 64 -23.44%	56 60 -6.67%	71 76 -6.58%	53 64 -17.19%	39 56 -30.36%	55
CO RD H47 5.0 MI SOUTH OF US 34 ALBIA 403-68	2012 2011 %	97 73 32.88%	87 59 47.46%	100 81 23.46%	114 93 22.58%	109 95 14.74%	109 96 13.54%	97 93 4.30%	113 93 21.51%	108 107 0.93%	104 105 -0.95%	111 111 0.00%	102 100 2.00%	92
LOCAL ROAD 2.5 MI NORTH OF US 18 BASSETT 405-19	2012 2011 %	41 39 5.13%	40 33 21.21%	43 37 16.22%	52 47 10.64%	61 52 17.31%	60 53 13.21%	49 55 -10.91%	54 47 14.89%	54 45 20.00%	57 64 -10.94%	55 52 5.77%	45 48 -6.25%	48
LOCAL ROAD 2.0 MI EAST OF US 169 LORIMOR 406-88	2012 2011 %	60 54 11.11%	54 49 10.20%	65 52 25.00%	89 63 41.27%	72 62 16.13%	82 57 43.86%	73 52 40.38%	84 54 55.56%	NO DATA 56 10.14%	76 69 27.59%	74 58 27.59%	69 58 18.97%	57
CO ROAD H23 2.0 MI EAST OF US 169 LORIMOR 407-88	2012 2011 %	61 63 -3.17%	60 60 0.00%	73 67 8.96%	76 69 10.14%	95 72 31.94%	88 72 22.22%	77 64 20.31%	72 66 9.09%	85 64 32.81%	80 74 8.11%	76 60 26.67%	74 61 21.31%	66
TOTAL RURAL COUNTY GRAVEL	2012 2011 %	347 314 10.51%	318 272 16.91%	376 320 17.50%	449 371 21.02%	475 407 16.71%	472 389 21.34%	438 392 11.73%	427 399 7.02%	368 345 6.67%	378 418 -9.57%	346 345 0.29%	296 314 -5.73%	
TOTAL RURAL COUNTY PAVED & GRAVEL	2012 2011 %	9733 9165 6.20%	9771 9266 5.45%	12734 12184 4.51%	12157 11924 1.95%	11469 11022 4.06%	11661 11502 1.38%	10405 10551 -1.38%	10083 9994 0.89%	9525 9353 1.84%	10898 11418 -4.55%	13405 13464 -0.44%	11604 12193 -4.83%	

NOTE: Numbers in red denote estimated traffic due to road construction, inaccurate, or insufficient data. Monthly data for sites without comparable data are not include in TOTAL.

**COMPARISON OF THE MONTHLY AVERAGE DAILY TRAFFIC (MADT) FOR 2012 AND 2011
AND ANNUAL AVERAGE DAILY TRAFFIC (AADT)**

RECREATIONAL PRIMARY

LOCATION AND STATION NUMBER		JAN. MADT	FEB. MADT	MARCH MADT	APRIL MADT	MAY MADT	JUNE MADT	JULY MADT	AUG. MADT	SEPT. MADT	OCT. MADT	NOV. MADT	DEC. MADT	ANNUAL AADT
US 71 0.1 MI SOUTH OF CO RD B14	2012	6700	6682	7472	8274	9274	NO DATA	NO DATA	NO DATA	NO DATA	NO DATA	NO DATA	NO DATA	
FOSTORIA	2011	6477	6510	7020	7638	8695	9948	10646	9868	10099	7991	7073	7039	8250
500-21	%	3.44%	2.64%	6.44%	8.33%	6.66%								
IA 5 3.8 MI SOUTH OF US 34	2012	3160	3243	3544	3792	4268	4323	4378	4100	3940	3699	3510	3306	
MORAVIA	2011	3101	3163	3453	3693	4204	4236	4480	4226	4114	3885	3613	3449	3801
501-68	%	1.90%	2.53%	2.64%	2.68%	1.52%	2.05%	-2.28%	-2.98%	-4.23%	-4.79%	-2.85%	-4.15%	
IA 415 0.5 MI WEST OF NW POLK CITY RD	2012	5113	5136	5975	6495	7608	7753	7352	7028	7039	6590	6018	5233	
POLK CITY	2011	4709	4901	5263	6102	6835	7417	7151	6999	6769	6464	5596	5349	6130
503-77	%	8.58%	4.79%	13.53%	6.44%	11.31%	4.53%	2.81%	0.41%	3.99%	1.95%	7.54%	-2.17%	
TOTAL RECREATIONAL PRIMARY	2012	14973	15061	16991	18561	21150	12076	11730	11128	10979	10289	9528	8539	
	2011	14287	14574	15736	17433	19734	11653	11631	11225	10883	10349	9209	8798	
	%	4.80%	3.34%	7.98%	6.47%	7.18%	3.63%	0.85%	-0.86%	0.88%	-0.58%	3.46%	-2.94%	

RECREATIONAL SECONDARY

LOCATION AND STATION NUMBER		JAN. MADT	FEB. MADT	MARCH MADT	APRIL MADT	MAY MADT	JUNE MADT	JULY MADT	AUG. MADT	SEPT. MADT	OCT. MADT	NOV. MADT	DEC. MADT	ANNUAL AADT
CO RD F25 0.1 MI WEST OF CO RD P18	2012	110	109	155	187	260	262	270	244	206	189	153	114	
SPRINGBROOK STATE PARK	2011	101	128	143	191	262	281	301	243	232	213	168	129	199
600-39	%	8.91%	-14.84%	8.39%	-2.09%	-0.76%	-6.76%	-10.30%	0.41%	-11.21%	-11.27%	-8.93%	-11.63%	
ENTRANCE TO GEORGE WYTH STATE PARK	2012	357	308	864	775	1408	1905	1560	1078	905	467	321	253	
WATERLOO	2011	322	330	397	744	1246	1429	1211	1198	991	653	320	262	759
602-07	%	10.87%	-6.67%	117.63%	4.17%	13.00%	33.31%	28.82%	-10.02%	-8.68%	-28.48%	0.31%	-3.44%	
ENTRANCE TO GREEN VALLEY STATE PARK	2012	126	127	232	231	496	506	385	308	326	183	126	95	
GREEN VALLEY STATE PARK	2011	NO DATA	NO DATA	NO DATA	NO DATA	NO DATA	NO DATA	373	382	363	229	124	121	NO AADT
603-88	%							3.22%	-19.37%	-10.19%	-20.09%	1.61%	-21.49%	
TOTAL RECREATIONAL SECONDARY	2012	467	417	1019	962	1668	2167	2215	1630	1437	839	600	462	
	2011	423	458	540	935	1508	1710	1885	1823	1586	1095	612	512	
	%	10.40%	-8.95%	88.70%	2.89%	10.61%	26.73%	17.51%	-10.59%	-9.39%	-23.38%	-1.96%	-9.77%	
TOTAL RECREATIONAL PRIMARY AND SECONDARY	2012	15440	15478	18010	19523	22818	14243	13945	12758	12416	11128	10128	9001	
	2011	14710	15032	16276	18368	21242	13363	13516	13048	12469	11444	9821	9310	
	%	4.96%	2.97%	10.65%	6.29%	7.42%	6.59%	3.17%	-2.22%	-0.43%	-2.76%	3.13%	-3.32%	

NOTE: Numbers in red denote estimated traffic due to road construction, inaccurate, or insufficient data. Monthly data for sites without comparable data are not include in TOTAL.

**COMPARISON OF THE MONTHLY AVERAGE DAILY TRAFFIC (MADT) FOR 2012 AND 2011
AND ANNUAL AVERAGE DAILY TRAFFIC (AADT)**

MUNICIPAL INTERSTATE

LOCATION AND STATION NUMBER		JAN. MADT	FEB. MADT	MARCH MADT	APRIL MADT	MAY MADT	JUNE MADT	JULY MADT	AUG. MADT	SEPT. MADT	OCT. MADT	NOV. MADT	DEC. MADT	ANNUAL AADT
I 380 BTWN WILSON AVE AND 33RD AVE CEDAR RAPIDS 701-57	2012	59244	64755	66257	69050	68262	70233	67369	69543	69433	69227	66318	59734	66597
	2011	61000	61948	65938	68029	67373	69460	66738	69840	69530	70620	66189	62510	
	%	-2.88%	4.53%	0.48%	1.50%	1.32%	1.11%	0.95%	-0.43%	-0.14%	-1.97%	0.19%	-4.44%	
I 380 AT J AVE BRIDGE S OF COLDSTREAM CEDAR RAPIDS 703-57	2012	74863	81057	82322	85420	85846	87904	84617	85842	84788	85140	82072	75062	82907
	2011	76581	77337	81705	84427	83816	86184	83405	86542	85827	87631	82522	78906	
	%	-2.24%	4.81%	0.76%	1.18%	2.42%	2.00%	1.45%	-0.81%	-1.21%	-2.84%	-0.55%	-4.87%	
I 29/80 0.6 MI WEST OF IA 192 COUNCIL BLUFFS 704-78	2012	67609	68341	74557	76043	78823	81811	79935	82012	77830	75785	74126	69375	NO AADT
	2011	63865	67229	73400	75327	77720	NO DATA	NO DATA	NO DATA	NO DATA	NO DATA	74869	70399	
	%	5.86%	1.65%	1.58%	0.95%	1.42%						-0.99%	-1.45%	
I 74 0.6 MI SOUTH OF US 6 BETTENDORF 705-82	2012	43727	47042	48474	49530	47577	47935	48481	48667	48133	48585	47605	46077	45756
	2011	44594	44518	48506	48860	44560	45141	44769	43256	44698	46561	46311	47298	
	%	-1.94%	5.67%	-0.07%	1.37%	6.77%	6.19%	8.29%	12.51%	7.68%	4.35%	2.79%	-2.58%	
I 29 AT IOWA/S. DAKOTA BORDER SIOUX CITY 707-97	2012	NO DATA	NO DATA	NO DATA	NO DATA	NO DATA	NO DATA	NO DATA	NO DATA	NO DATA	NO DATA	NO DATA	NO DATA	NO AADT
	2011	NO DATA	NO DATA	NO DATA	NO DATA	NO DATA	NO DATA	NO DATA	NO DATA	NO DATA	NO DATA	NO DATA	NO DATA	
	%													
I 280 0.3 MI SOUTH OF IA 22 DAVENPORT 708-82	2012	17342	18283	19950	NO DATA	NO DATA	NO DATA	NO DATA	NO DATA	NO DATA	NO DATA	NO DATA	NO DATA	19943
	2011	17679	17464	19760	19773	21339	22351	21540	22051	20339	20123	18743	18153	
	%	-1.91%	4.69%	0.96%										
I 35 NORTH OF ORALABOR RD ANKENY 709-77	2012	50567	52583	55886	58604	59877	62267	61033	63998	59970	61219	58577	50757	59603
	2011	52273	54399	57976	61104	62172	64675	63802	66108	62546	60781	56381	53013	
	%	-3.26%	-3.34%	-3.60%	-4.09%	-3.69%	-3.72%	-4.34%	-3.19%	-4.12%	0.72%	3.89%	-4.26%	
I 235 E INNERLEG OF 35TH ST WEST DES MOINES 710-77	2012	NO DATA	NO DATA	NO DATA	NO DATA	NO DATA	NO DATA	NO DATA	NO DATA	NO DATA	NO DATA	NO DATA	NO DATA	NO AADT
	2011	NO DATA	NO DATA	NO DATA	NO DATA	NO DATA	NO DATA	NO DATA	NO DATA	NO DATA	NO DATA	NO DATA	NO DATA	
	%													
I 235 SOUTH OF GUTHRIE AVE DES MOINES 711-77	2012	61737	65164	65503	67761	67132	69050	65316	71221	NO DATA	NO DATA	NO DATA	NO DATA	64950
	2011	61280	64283	64148	66035	66735	67096	63416	67354	65439	67180	64159	62271	
	%	0.75%	1.37%	2.11%	2.61%	0.59%	2.91%	3.00%	5.74%					
I 235 E OF SECOND AVE DES MOINES 712-77	2012	NO DATA	NO DATA	NO DATA	NO DATA	NO DATA	NO DATA	NO DATA	NO DATA	NO DATA	NO DATA	NO DATA	NO DATA	NO AADT
	2011	NO DATA	NO DATA	NO DATA	NO DATA	NO DATA	NO DATA	NO DATA	NO DATA	NO DATA	NO DATA	NO DATA	NO DATA	
	%													
I 35/80 E OF MERLE HAY RD DES MOINES 713-77	2012	80389	82575	86790	NO DATA	NO DATA	NO DATA	NO DATA	NO DATA	NO DATA	NO DATA	NO DATA	NO DATA	NO AADT
	2011	NO DATA	82526	83837	87170	90001	92880	NO DATA	NO DATA	NO DATA	90631	89397	88482	
	%		0.06%	3.52%										
TOTAL MUNICIPAL INTERSTATE	2012	375089	479800	499739	406408	407517	337389	326816	339271	262324	264171	254572	301005	
	2011	377272	469704	495270	403782	402376	332556	322130	333100	262601	265593	251403	312126	
	%	-0.58%	2.15%	0.90%	0.65%	1.28%	1.45%	1.45%	1.85%	-0.11%	-0.54%	1.26%	-3.56%	

NOTE: Numbers in red denote estimated traffic due to road construction, inaccurate, or insufficient data. Monthly data for sites without comparable data are not include in TOTAL.

**COMPARISON OF THE MONTHLY AVERAGE DAILY TRAFFIC (MADT) FOR 2012 AND 2011
AND ANNUAL AVERAGE DAILY TRAFFIC (AADT)**

MUNICIPAL PRIMARY

LOCATION AND STATION NUMBER		JAN. MADT	FEB. MADT	MARCH MADT	APRIL MADT	MAY MADT	JUNE MADT	JULY MADT	AUG. MADT	SEPT. MADT	OCT. MADT	NOV. MADT	DEC. MADT	ANNUAL AADT
US 71 W OF MEMPHIS AVE SPIRIT LAKE 802-30	2012	10016	10058	10841	11464	13110	13754	14443	13061	12042	11172	10545	10168	11701
	2011	10127	10123	10491	11298	12675	13666	14606	13156	12381	11209	10283	10399	
	%	-1.10%	-0.64%	3.34%	1.47%	3.43%	0.64%	-1.12%	-0.72%	-2.74%	-0.33%	2.55%	-2.22%	
IA 12 ON VIADUCT E OF COURT ST SIOUX CITY 803-97	2012	20186	21126	22136	23119	22874	NO DATA	NO DATA	NO DATA	NO DATA	NO DATA	19960	18686	22563
	2011	19182	20732	21540	22683	24128	24505	23292	24008	23824	24878	21444	20545	
	%	5.23%	1.90%	2.77%	1.92%	-5.20%						-6.92%	-9.05%	
IA 4 N OF 4TH AVE NW POCAHONTAS 804-76	2012	2732	2787	3086	3331	3564	3682	3686	3592	3559	3388	3209	2865	3246
	2011	2515	2638	2780	3176	3472	3655	3757	3675	3739	3435	3164	2949	
	%	8.63%	5.65%	11.01%	4.88%	2.65%	0.74%	-1.89%	-2.26%	-4.81%	-1.37%	1.42%	-2.85%	
IA 148 S OF 11TH ST CORNING 805-02	2012	2351	2312	2697	2927	3220	3324	3414	2988	2894	2636	2535	2325	2797
	2011	2243	2271	2500	2856	2990	3329	3438	3161	3007	2723	2566	2479	
	%	4.81%	1.81%	7.88%	2.49%	7.69%	-0.15%	-0.70%	-5.47%	-3.76%	-3.20%	-1.21%	-6.21%	
US 6/HICKMAN RD E OF SHASTA PLACE WINDSOR HEIGHTS 806-77	2012	17221	17771	18527	19253	19710	19880	19238	19111	18662	18759	18489	17555	NO AADT
	2011	NO DATA	NO DATA	NO DATA	NO DATA	19401	20127	19450	19150	18409	18503	18084	18169	
	%					1.59%	-1.23%	-1.09%	-0.20%	1.37%	1.38%	2.24%	-3.38%	
US 71 S OF BIRCH ST AUDUBON 808-05	2012	4143	4154	4746	4829	4953	4880	4777	4830	4860	4786	4680	4452	NO AADT
	2011	4070	4162	4531	4831	5047	5050	NO DATA	NO DATA	NO DATA	NO DATA	4733	4589	
	%	1.79%	-0.19%	4.75%	-0.04%	-1.86%	-3.37%					-1.12%	-2.99%	
IA 14 N OF WOODLAND ST MARSHALLTOWN 809-64	2012	5124	5410	5771	5915	6279	6280	6110	6024	6215	6076	5726	5105	6000
	2011	5349	5456	5755	6077	6278	6490	6500	6396	6250	6148	5772	5535	
	%	-4.21%	-0.84%	0.28%	-2.67%	0.02%	-3.24%	-6.00%	-5.82%	-0.56%	-1.17%	-0.80%	-7.77%	
IA 92 WEST OF 'N' ST INDIANOLA 810-91	2012	9925	9984	10884	11698	12093	11744	11522	11391	11407	11264	10799	9868	11306
	2011	9484	9746	10429	11575	12052	12038	11906	11466	11350	11575	10577	10236	
	%	4.65%	2.44%	4.36%	1.06%	0.34%	-2.44%	-3.23%	-0.65%	0.50%	-2.69%	2.10%	-3.60%	
IA 192 SOUTH OF AVE 'N' AVE COUNCIL BLUFFS 811-78	2012	5571	5737	6287	6376	6453	* 6388	6046	6102	6082	5977	5655	5361	NO AADT
	2011	5997	6192	6403	6652	6861	7994	NO DATA	NO DATA	NO DATA	NO DATA	5771	5556	
	%	-7.10%	-7.35%	-1.81%	-4.15%	-5.95%	-20.09%					-2.01%	-3.51%	
IA 122 WEST OF VIRGINIA AVE MASON CITY 812-17	2012	10453	11395	11842	11923	12011	11132	10496	10912	12523	12686	11941	10315	11754
	2011	10577	11052	10940	11935	12256	11348	10857	11671	13065	13605	12329	11414	
	%	-1.17%	3.10%	8.24%	-0.10%	-2.00%	-1.90%	-3.33%	-6.50%	-4.15%	-6.75%	-3.15%	-9.63%	

**COMPARISON OF THE MONTHLY AVERAGE DAILY TRAFFIC (MADT) FOR 2012 AND 2011
AND ANNUAL AVERAGE DAILY TRAFFIC (AADT)**

MUNICIPAL PRIMARY

LOCATION AND STATION NUMBER		JAN. MADT	FEB. MADT	MARCH MADT	APRIL MADT	MAY MADT	JUNE MADT	JULY MADT	AUG. MADT	SEPT. MADT	OCT. MADT	NOV. MADT	DEC. MADT	ANNUAL AADT
US 6 EAST OF PINE ST DAVENPORT 813-82	2012 2011 %	19650 18977 3.55%	21287 19939 6.76%	21502 20976 2.51%	21962 21577 1.78%	22017 21544 2.20%	22233 21576 3.05%	23056 20869 10.48%	22954 21837 5.12%	22913 21061 8.79%	23002 21739 5.81%	22604 21374 5.75%	21419 22175 -3.41%	21137
IA 922 NORTH OF WILEY BLVD CEDAR RAPIDS 815-57	2012 2011 %	9307 9367 -0.64%	9736 9636 1.04%	10367 10104 2.60%	10576 10982 -3.70%	11089 12217 -9.23%	11111 11802 -5.85%	10717 11154 -3.92%	10536 10985 -4.09%	10287 10489 -1.93%	10275 10524 -2.37%	10132 10242 -1.07%	NO DATA 10396	10658
US 34 WEST OF US 61 WEST BURLINGTON 816-29	2012 2011 %	11940 11866 0.62%	12741 12038 5.84%	13250 13181 0.52%	13433 13398 0.26%	13506 13324 1.37%	13835 13624 1.55%	13391 13403 -0.09%	13388 13670 -2.06%	13372 13398 -0.19%	13412 13330 0.62%	13383 12817 4.42%	12422 12868 -3.47%	13076
IA 9 EAST OF 14TH ST OSAGE 819-66	2012 2011 %	4362 4395 -0.75%	4577 4707 -2.76%	5073 4863 4.32%	5410 NO DATA 4.32%	5885 5906 -0.36%	5835 5766 1.20%	5678 5709 -0.54%	5257 5476 -4.00%	5399 5275 2.35%	5223 5397 -3.22%	4989 4796 4.02%	4802 4787 0.31%	NO AADT
IA 17 NORTH OF NW 11TH ST EAGLE GROVE 820-99	2012 2011 %	2567 2554 0.51%	2536 2533 0.12%	2809 2586 8.62%	2874 2991 -3.91%	3031 2949 2.78%	2952 3124 -5.51%	2903 3224 -9.96%	2928 3165 -7.49%	2904 3041 -4.51%	2870 3036 -5.47%	2765 2843 -2.74%	2579 2733 -5.63%	2898
IA 4 SOUTH OF EDGEWOOD AVE EAST JEFFERSON 821-37	2012 2011 %	3439 3441 -0.06%	3413 3507 -2.68%	3643 3730 -2.33%	NO DATA 4136	NO DATA 4380	NO DATA 4365	NO DATA 3927	NO DATA 4218	NO DATA 4411	NO DATA 4387	3685 3798 -2.98%	3379 3641 -7.20%	3995
US 6 EAST OF SYCAMORE ST IOWA CITY 823-52	2012 2011 %	18626 18548 0.42%	19802 19102 3.66%	20556 19796 3.84%	21038 20601 2.12%	21668 21061 2.88%	21676 21021 3.12%	20705 20419 1.40%	20952 20831 0.58%	NO DATA 20633	NO DATA 21117	NO DATA 19554	NO DATA 19089	20148
US 69 NORTH OF 15TH ST AMES 824-85	2012 2011 %	16164 16307 -0.88%	16820 16800 0.12%	17161 16773 2.31%	17939 18013 -0.41%	17992 17861 0.73%	17315 17689 -2.11%	NO DATA 17379	NO DATA 18300	18079 18321 -1.32%	17841 18290 -2.45%	17196 17313 -0.68%	16907 17760 -4.80%	17567
US 65 1.5 MI NORTH OF I-80 BONDURANT 826-77	2012 2011 %	11205 10685 4.87%	11463 11157 2.74%	12191 11953 1.99%	12840 12493 2.78%	13666 13157 3.87%	13619 13178 3.35%	13098 12904 1.50%	NO DATA 13833	NO DATA 12697	12666 12943 -2.14%	12377 12435 -0.47%	11347 11919 -4.80%	12446
US 61/151 @ MISSISSIPPI RIVER BRIDGE DUBUQUE 827-31	2012 2011 %	17946 17938 0.04%	19863 18224 8.99%	21372 20602 3.74%	21746 21642 0.48%	22836 22418 1.86%	23803 23351 1.94%	23695 23811 -0.49%	23343 23806 -1.94%	22582 22959 -1.64%	22116 23014 -3.90%	21015 21069 -0.26%	19020 20472 -7.09%	21609

**COMPARISON OF THE MONTHLY AVERAGE DAILY TRAFFIC (MADT) FOR 2012 AND 2011
AND ANNUAL AVERAGE DAILY TRAFFIC (AADT)**

MUNICIPAL PRIMARY

LOCATION AND STATION NUMBER		JAN. MADT	FEB. MADT	MARCH MADT	APRIL MADT	MAY MADT	JUNE MADT	JULY MADT	AUG. MADT	SEPT. MADT	OCT. MADT	NOV. MADT	DEC. MADT	ANNUAL AADT
IA 150 SOUTH OF 12TH ST OELWEIN 828-33	2012 2011 %	5511 5772 -4.52%	5905 5907 -0.03%	6294 6171 1.99%	6579 6528 0.78%	6991 7014 -0.33%	7042 7073 -0.44%	6582 6859 -4.04%	6593 6790 -2.90%	6479 6632 -2.31%	6303 6716 -6.15%	6107 6323 -3.42%	5862 6091 -3.76%	6490
US 59 SOUTH OF 5TH AVENUE SHENANDOAH 829-73	2012 2011 %	8106 7703 5.23%	8312 8139 2.13%	8870 8624 2.85%	8969 9106 -1.50%	9691 9528 1.71%	NO DATA 9891	NO DATA NO DATA	NO DATA NO DATA	NO DATA NO DATA	NO DATA NO DATA	NO DATA 8795	NO DATA 8514	NO AADT
IA 23 1.0 MI SOUTH OF IA 92 OSKALOOSA 830-62	2012 2011 %	2530 2490 1.61%	2601 2526 2.97%	2875 2750 4.55%	2880 2932 -1.77%	2977 2889 3.05%	2954 2926 0.96%	2795 2873 -2.71%	2825 2921 -3.29%	2992 2989 0.10%	2831 2938 -3.64%	2729 2801 -2.57%	2536 2656 -4.52%	2808
IA 5 WEST OF FLEUR DRIVE DES MOINES 831-92	2012 2011 %	20338 20366 -0.14%	20541 20915 -1.79%	21731 21818 -0.40%	22959 23117 -0.68%	23797 24383 -2.40%	24749 25219 -1.86%	23468 24410 -3.86%	24596 25115 -2.07%	23488 23392 0.41%	23495 23764 -1.13%	22702 22294 1.83%	21389 22235 -3.80%	23086
TOTAL MUNICIPAL PRIMARY	2012 2011 %	222192 219953 1.02%	232560 227502 2.22%	245984 239296 2.79%	245377 244463 0.37%	279413 279411 0.00%	241800 242052 -0.10%	214997 216149 -0.53%	200451 203271 -1.39%	195797 195758 0.02%	206015 208889 -1.38%	233223 232828 0.17%	208362 219208 -4.95%	

NOTE: Site 811 not used in June totals due to flood influenced traffic in June 2011

NOTE: Numbers in red denote estimated traffic due to road construction, inaccurate, or insufficient data. Monthly data for sites without comparable data are not include in TOTAL.

**COMPARISON OF THE MONTHLY AVERAGE DAILY TRAFFIC (MADT) FOR 2012 AND 2011
AND ANNUAL AVERAGE DAILY TRAFFIC (AADT)**

MUNICIPAL STREET

LOCATION AND STATION NUMBER		JAN. MADT	FEB. MADT	MARCH MADT	APRIL MADT	MAY MADT	JUNE MADT	JULY MADT	AUG. MADT	SEPT. MADT	OCT. MADT	NOV. MADT	DEC. MADT	ANNUAL AADT
LAKE ST NORTH OF 3RD ST	2012	2292	2375	2694	2693	2875	2891	2919	2637	2618	2595	2455	2278	
STORM LAKE	2011	2339	2459	2651	2864	NO DATA	NO DATA	2840	2880	2767	2703	2506	2384	NO AADT
900-11	%	-2.01%	-3.42%	1.62%	-5.97%			2.78%	-8.44%	-5.38%	-4.00%	-2.04%	-4.45%	
2ND AVE N EAST OF 15TH ST	2012	6058	6360	6695	6706	6812	6550	6268	6461	6558	6604	6247	6014	
FORT DODGE	2011	6098	6456	6925	6881	7053	6748	6529	6694	6549	6750	6415	6346	6620
901-94	%	-0.66%	-1.49%	-3.32%	-2.54%	-3.42%	-2.93%	-4.00%	-3.48%	0.14%	-2.16%	-2.62%	-5.23%	
LOCUST ST EAST OF SPRING ST	2012	18086	19808	20626	21021	23558	NO DATA	NO DATA	NO DATA	NO DATA	22857	NO DATA	19782	
DAVENPORT	2011	18873	18923	19923	NO DATA	21578	20360	19454	20276	20416	20875	18679	18888	NO AADT
902-82	%	-4.17%	4.68%	3.53%		9.18%					9.49%		4.73%	
JEFFERSON ST NORTHEAST OF E 5TH ST	2012	5235	5493	5646	5737	5863	5718	5289	5497	5713	5695	6323	6178	
OTTUMWA	2011	4557	5166	5799	5785	5829	5727	5539	5351	4989	NO DATA	NO DATA	NO DATA	NO AADT
903-90	%	14.88%	6.33%	-2.64%	-0.83%	0.58%	-0.16%	-4.51%	2.73%	14.51%				
JOHNSON AVE WEST OF JANICE DR	2012	8615	8965	9277	9648	10058	9769	9384	9358	9267	9154	8863	8731	
CEDAR RAPIDS	2011	8803	8986	9191	9799	9958	9798	9530	9762	9489	9389	8906	9079	9391
904-57	%	-2.14%	-0.23%	0.94%	-1.54%	1.00%	-0.30%	-1.53%	-4.14%	-2.34%	-2.50%	-0.48%	-3.83%	
NORTHWESTERN AVE NORTH OF 20TH ST	2012	2029	2103	2102	2307	2258	2053	NO DATA	2094	2472	2314	2150	1982	
AMES	2011	1973	2070	2043	2330	2385	2116	2556	2266	2183	2230	2101	2062	2193
905-85	%	2.84%	1.59%	2.89%	-0.99%	-5.32%	-2.98%		-7.59%	13.24%	3.77%	2.33%	-3.88%	
DUBUQUE ST SOUTH OF DAVENPORT	2012	11852	13554	13640	14529	13766	13398	12904	14481	14597	14579	13294	11616	
IOWA CITY	2011	12438	13678	13622	14862	14437	13834	13768	14546	14658	14913	13200	12353	13859
906-52	%	-4.71%	-0.91%	0.13%	-2.24%	-4.65%	-3.15%	-6.28%	-0.45%	-0.42%	-2.24%	0.71%	-5.97%	
COLLEGE ST SOUTH OF 23RD ST	2012	7566	8803	8223	9045	NO DATA	NO DATA	5946	8135	8901	8516	7415	6210	
CEDAR FALLS	2011	7884	8752	8138	9804	8263	7405	6043	7399	8471	8963	7682	6881	7974
907-07	%	-4.03%	0.58%	1.04%	-7.74%			-1.61%	9.95%	5.08%	-4.99%	-3.48%	-9.75%	
LINDENWOOD ST SOUTH OF 35TH ST	2012	845	846	943	993	1093	1067	1013	995	945	959	925	899	
SIOUX CITY	2011	798	808	857	971	1079	1158	1077	1076	1004	984	933	966	976
908-97	%	5.89%	4.70%	10.04%	2.27%	1.30%	-7.86%	-5.94%	-7.53%	-5.88%	-2.54%	-0.86%	-6.94%	
HAMILTON BLVD NORTH OF CLIFTON AVE	2012	13258	13381	14647	15147	15869	15211	14678	14973	14977	14631	14361	13879	
SIOUX CITY	2011	12814	13305	13922	14794	15918	15113	14174	14458	15079	15092	14056	13935	14388
909-97	%	3.46%	0.57%	5.21%	2.39%	-0.31%	0.65%	3.56%	3.56%	-0.68%	-3.05%	2.17%	-0.40%	

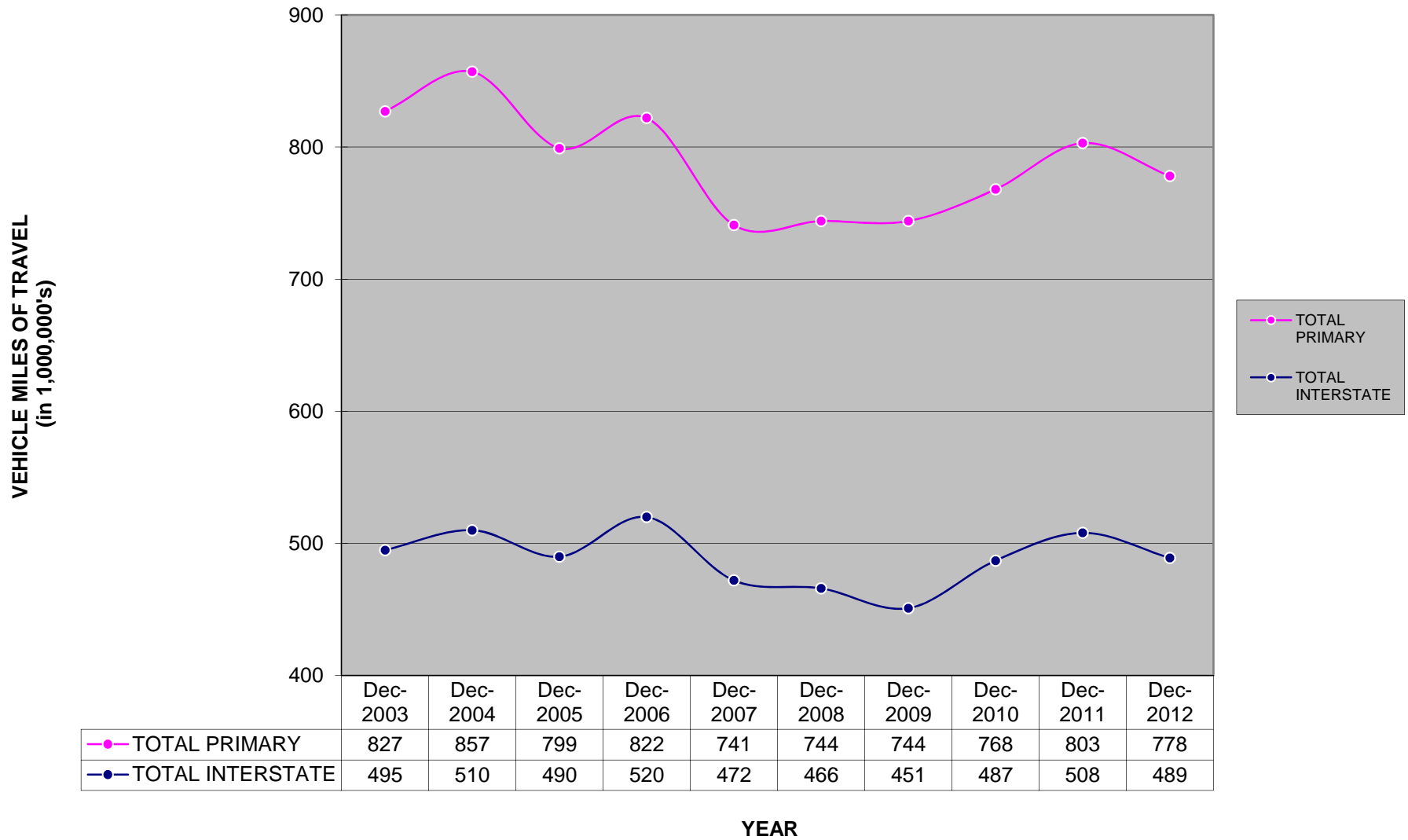
**COMPARISON OF THE MONTHLY AVERAGE DAILY TRAFFIC (MADT) FOR 2012 AND 2011
AND ANNUAL AVERAGE DAILY TRAFFIC (AADT)**

MUNICIPAL STREET

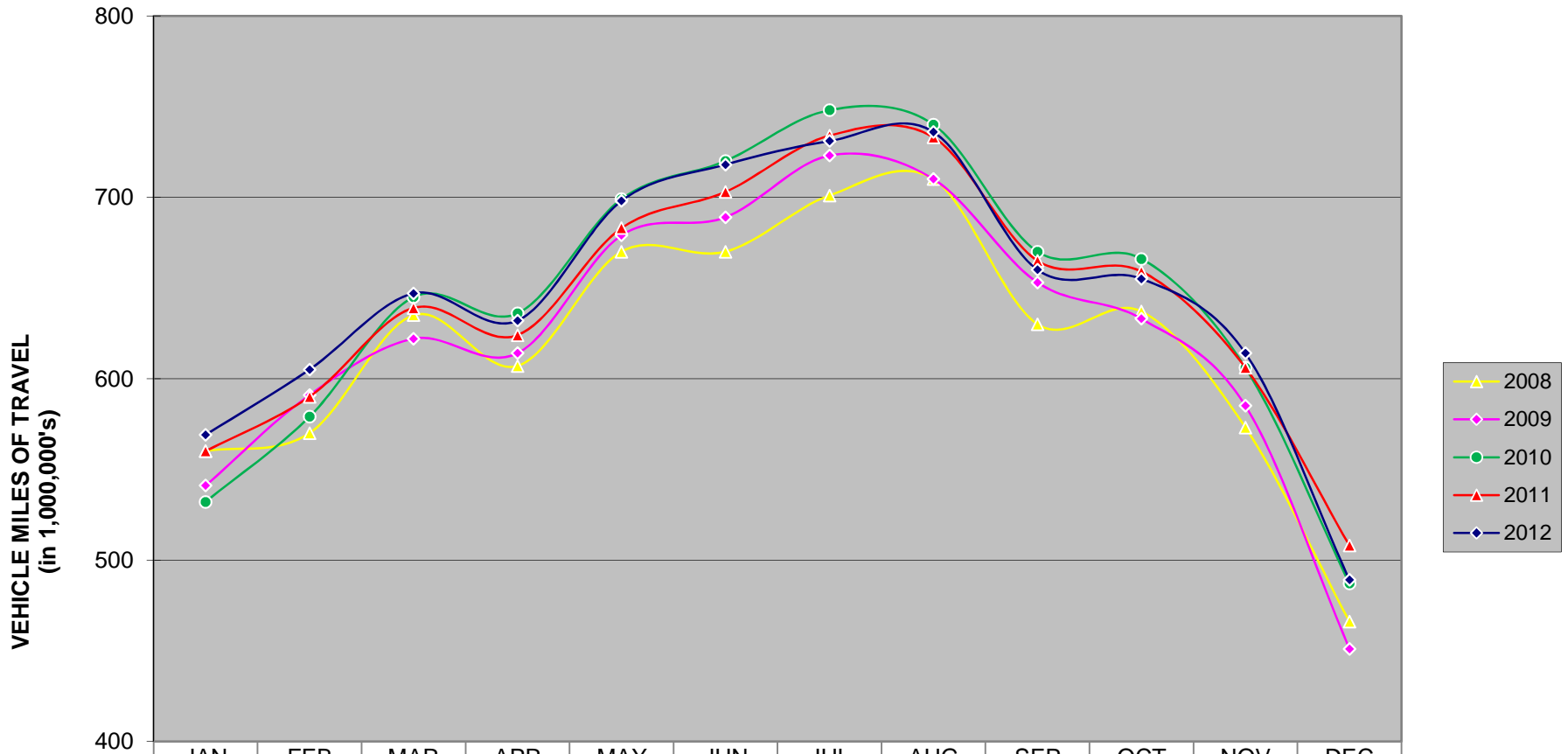
LOCATION AND STATION NUMBER		JAN. MADT	FEB. MADT	MARCH MADT	APRIL MADT	MAY MADT	JUNE MADT	JULY MADT	AUG. MADT	SEPT. MADT	OCT. MADT	NOV. MADT	DEC. MADT	ANNUAL AADT
GRANDVIEW AVE SOUTH OF PLYMOUTH CT	2012	7716	8085	8650	9191	9578	9619	9159	9069	9180	8980	8522	8240	
DUBUQUE	2011	7661	7640	8283	8962	9713	9731	9354	9608	9456	9341	8610	8645	8917
910-31	%	0.72%	5.82%	4.43%	2.56%	-1.39%	-1.15%	-2.08%	-5.61%	-2.92%	-3.86%	-1.02%	-4.68%	
HUMBOLDT AVE SOUTH OF 4TH ST	2012	607	598	664	694	777	753	746	756	NO DATA	845	681	586	
BODE	2011	662	688	712	774	786	746	760	727	756	873	720	669	739
911-46	%	-8.31%	-13.08%	-6.74%	-10.34%	-1.15%	0.94%	-1.84%	3.99%		-3.21%	-5.42%	-12.41%	
ELM ST NORTH OF LUCAS ST	2012	3408	3535	3815	3953	4062	3994	3792	3792	3777	3751	3565	3373	
CRESTON	2011	3628	3826	3984	4027	3973	4008	3709	3909	3759	3731	3523	3550	3802
912-88	%	-6.06%	-7.61%	-4.24%	-1.84%	2.24%	-0.35%	2.24%	-2.99%	0.48%	0.54%	1.19%	-4.99%	
WASHINGTON ST EAST OF HARRISON ST	2012	NO DATA	NO DATA	NO DATA	NO DATA	NO DATA	NO DATA	NO DATA	NO DATA	NO DATA	NO DATA	NO DATA	NO DATA	NO DATA
MOUNT PLEASANT	2011	NO DATA	NO DATA	NO DATA	NO DATA	NO DATA	NO DATA	NO DATA	NO DATA	NO DATA	NO DATA	NO DATA	NO DATA	NO AADT
913-44	%													
TOTAL MUNICIPAL STREET	2012	87567	93906	97622	80643	93694	68132	72098	78248	79005	95785	68478	83590	
	2011	88528	92757	96050	81853	92709	68979	73323	78676	78404	95844	68652	85758	
	%	-1.09%	1.24%	1.64%	-1.48%	1.06%	-1.23%	-1.67%	-0.54%	0.77%	-0.06%	-0.25%	-2.53%	

NOTE: Numbers in red denote estimated traffic due to road construction, inaccurate, or insufficient data. Monthly data for sites without comparable data are not include in TOTAL.

DECEMBER HISTORICAL VMT



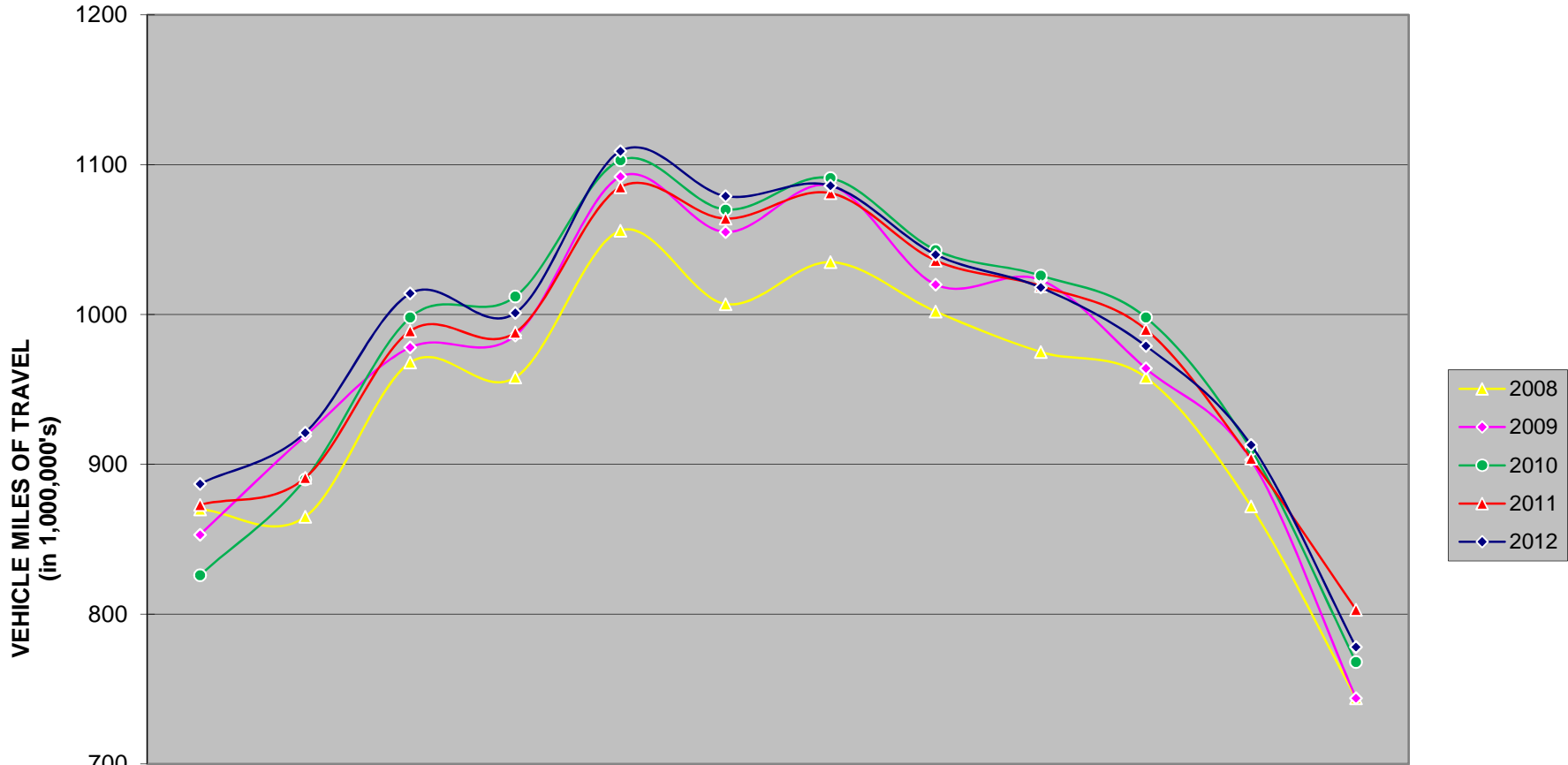
MONTHLY INTERSTATE TRAVEL



	JAN	FEB	MAR	APR	MAY	JUN	JUL	AUG	SEP	OCT	NOV	DEC
2008	560	570	635	607	670	670	701	710	630	637	573	466
2009	541	591	622	614	679	689	723	710	653	633	585	451
2010	532	579	645	636	699	720	748	740	670	666	606	487
2011	560	590	639	624	683	703	734	733	665	659	606	508
2012	569	605	647	632	698	718	731	736	660	655	614	489

There are 1,054 miles of Interstate in Iowa as of December 31, 2011.

MONTHLY US & IA ROUTE VMT



	JAN	FEB	MAR	APR	MAY	JUN	JUL	AUG	SEP	OCT	NOV	DEC
2008	870	865	968	958	1056	1007	1035	1002	975	958	872	744
2009	853	919	978	986	1092	1055	1086	1020	1023	964	903	744
2010	826	890	998	1012	1103	1070	1091	1043	1026	998	910	768
2011	873	891	989	988	1085	1064	1081	1036	1019	990	904	803
2012	887	921	1014	1001	1109	1079	1086	1040	1018	979	913	778

There are 9,415 miles of US and IA routes in Iowa as of December 31, 2011.

MONTHLY TOTAL STATE VMT
 (Includes Interstate, US, IA, Secondary & Municipal Roads)

