



**AUTOMATIC TRAFFIC
RECORDERS
1999 - 2009**

Prepared by

OFFICE OF TRANSPORTATION DATA

In Cooperation With

**UNITED STATES DEPARTMENT OF TRANSPORTATION
FEDERAL HIGHWAY ADMINISTRATION**

PHONE 515-239-1526

JANUARY 2010

TABLE OF CONTENTS

Introduction.....	3
Summary.....	4
Percent of Change in Traffic from 1980	5
Graphs Showing Monthly Comparison	
All Systems.....	6
Rural.....	8
Municipal.....	10
Graphs Showing Daily Comparison	
All Systems.....	7
Rural.....	9
Municipal.....	11
Graphs Showing Hourly Comparison	
Rural Interstate.....	12
Rural Primary	13
Rural Secondary.....	14
Municipal Interstate	15
Municipal Primary.....	16
Municipal Streets	17
Summary of Analysis of Thirtieth Highest Hour.....	18
Annual Average Daily Traffic by Stations for the Years 1999 to 2009.....	19 - 25
Map of Automatic Traffic Recorder Locations.....	26

INTRODUCTION

This report contains graphic comparisons of daily and monthly traffic collected on Iowa's highway system at 155 Permanent Continuous Automatic Traffic Recorder locations. Seventeen (17) stations are located on the Rural Interstate system, five (5) are on the Municipal Interstate system, seventy-two (72) are on the Rural Primary system, twenty-three (23) are on the Municipal Primary system, twenty-five (25) are on the Rural Secondary system and thirteen (13) are on the Municipal Street system. The map on page 26 shows the general location of count sites. Specific descriptions of locations, along with an eleven year summary of AADT's for each station, start on page 19.

The report compares travel trends from 1980 to present. Traffic is shown for rural, municipal and statewide travel.

Factors for estimating Design Hour Volumes from Annual Average Daily Traffic are shown by highway system. The values are developed from the straight-line relationships between Design Hour Volume and Annual Average Daily Traffic for the period of 2000 - 2009.

Information from the permanent traffic recorders indicates a 1.2% increase in statewide travel from 2008 to 2009. The estimated vehicle miles of travel for 2009 is 31.34 billion. Final 2009 traffic figures will be published near June 2010, when all traffic data collected during 2009 has been processed.

More travel occurs on Friday than any other day of the week on all road systems. Sunday is the lowest travel day on all systems except Rural Interstate. This is typical of other years.

TRAFFIC VOLUME VARIATIONS

ON

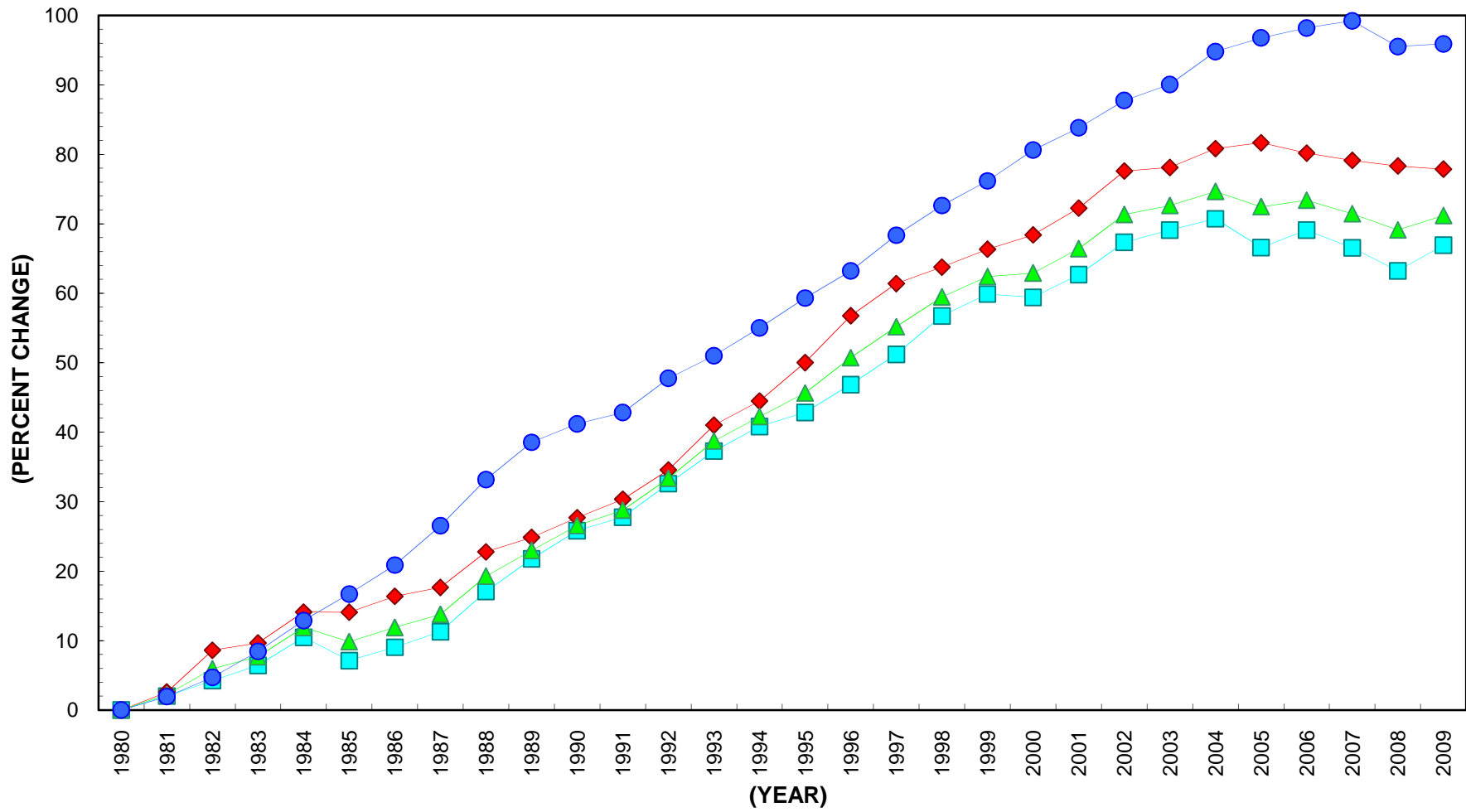
IOWA ROAD SYSTEMS

	2009 COMPARED TO 2008
RURAL INTERSTATE	+ 1.5 %
RURAL PRIMARY	+ 2.3%
RURAL SECONDARY	+ 3.0 %
RURAL TOTAL	+ 2.3 %
MUNICIPAL INTERSTATE	- 0.2 %
MUNICIPAL PRIMARY	+ 1.2 %
MUNICIPAL STREETS	- 1.0 %
MUNICIPAL TOTAL	- 0.3 %
STATE TOTAL	+ 1.2 %

Data collected at continuous automatic traffic recorder locations (see pages 19 – 25) were utilized to compute the above percentages. The rural, municipal and state totals were weighted based on estimated vehicle miles of travel.

PERCENT CHANGE IN TRAFFIC

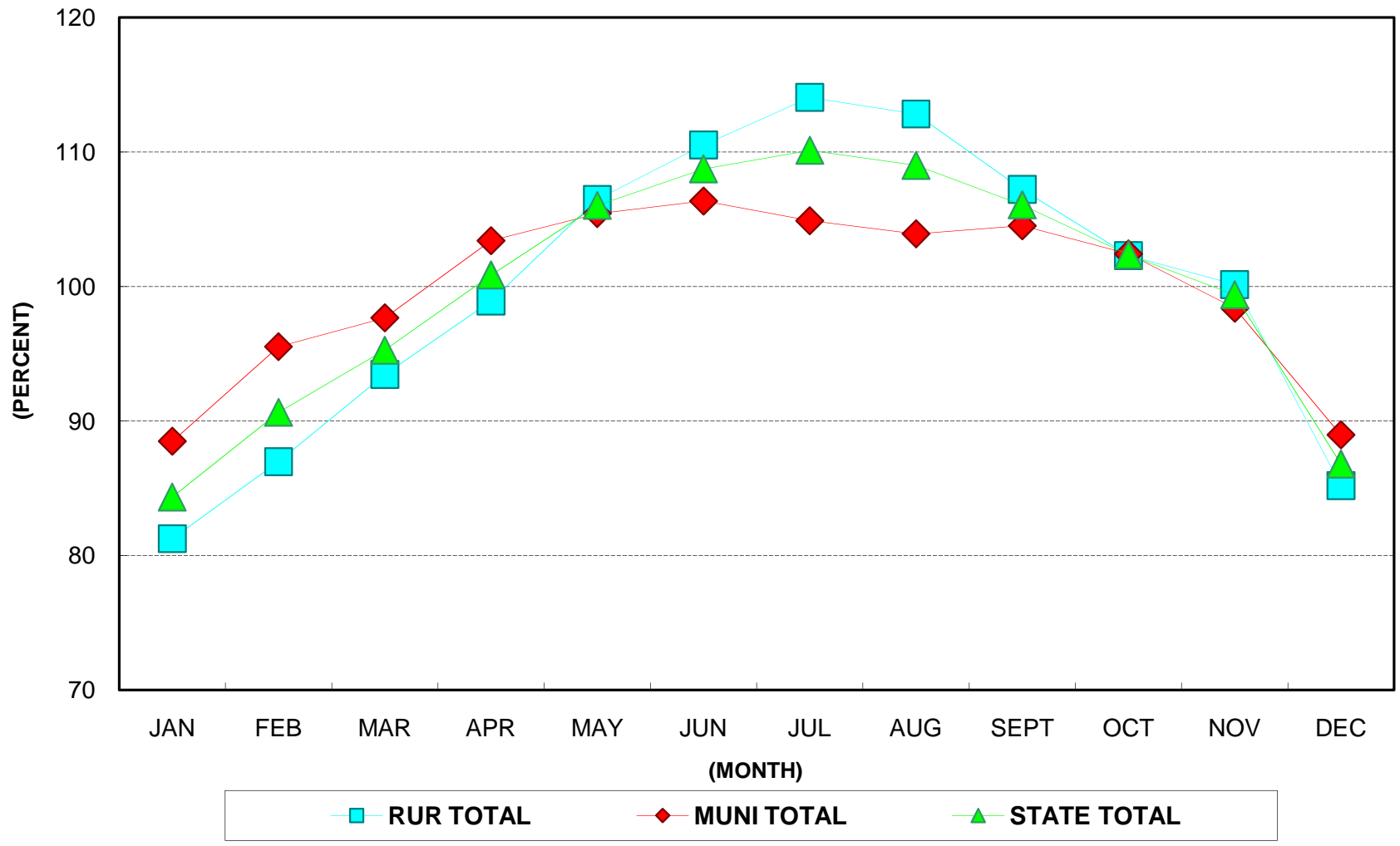
BASE YEAR 1980



—■— RURAL —◆— MUNICIPAL —▲— STATE —●— U.S.

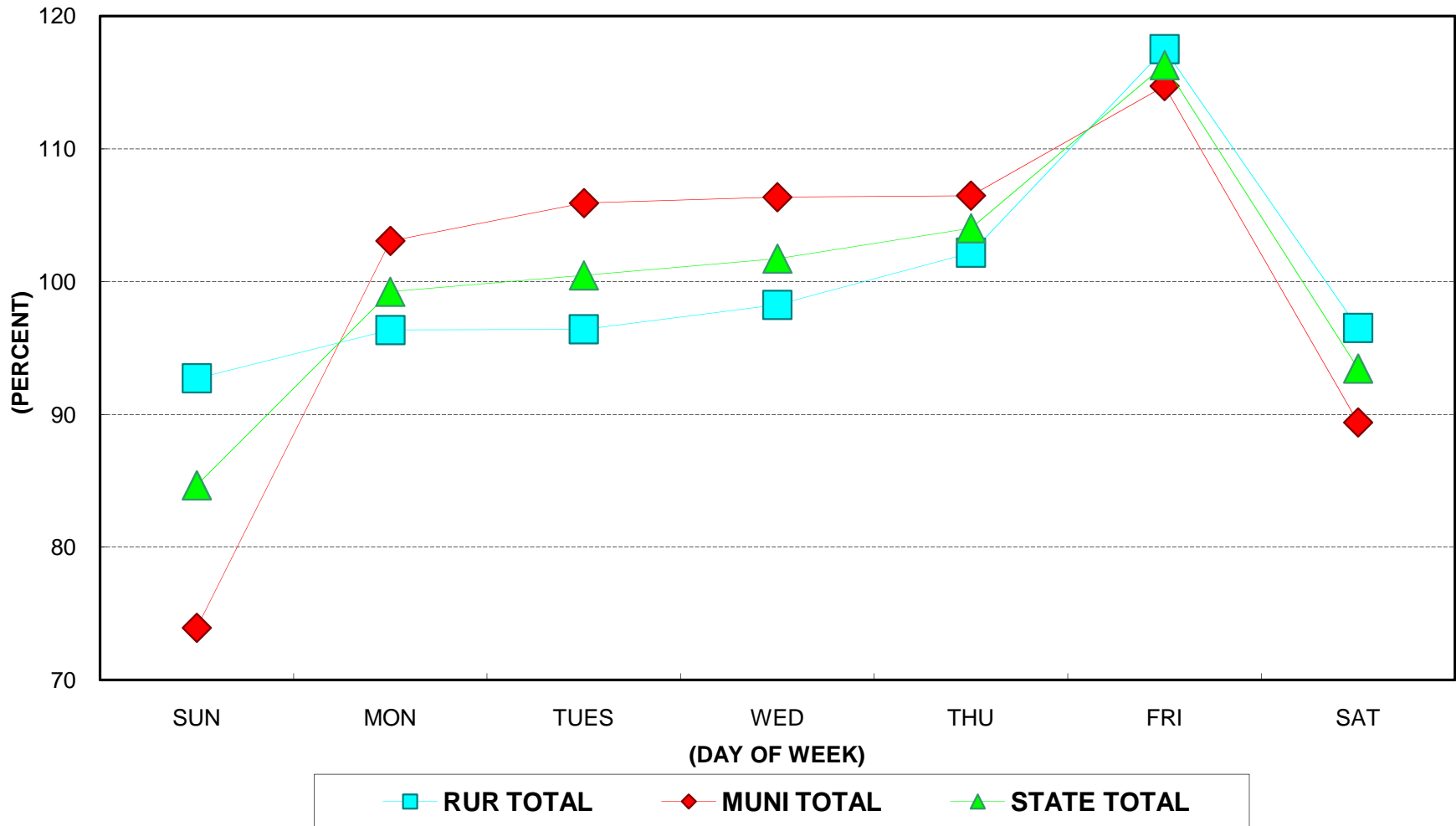
2009 MONTHLY TRAFFIC

AS A % OF ANNUAL AVERAGE DAILY TRAFFIC



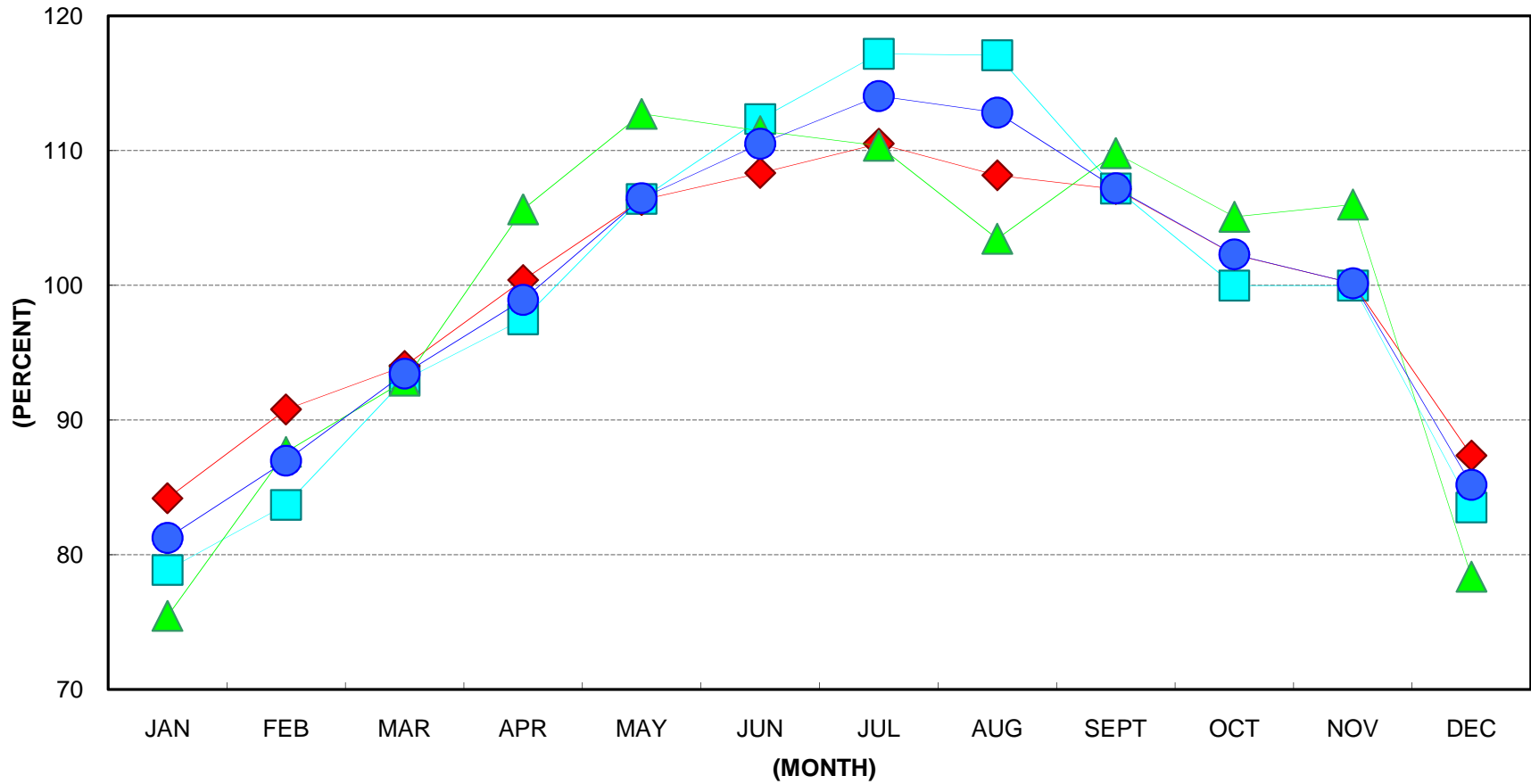
2009 DAY OF WEEK TRAFFIC

AS A % OF ANNUAL AVERAGE DAILY TRAFFIC



2009 RURAL MONTHLY TRAFFIC

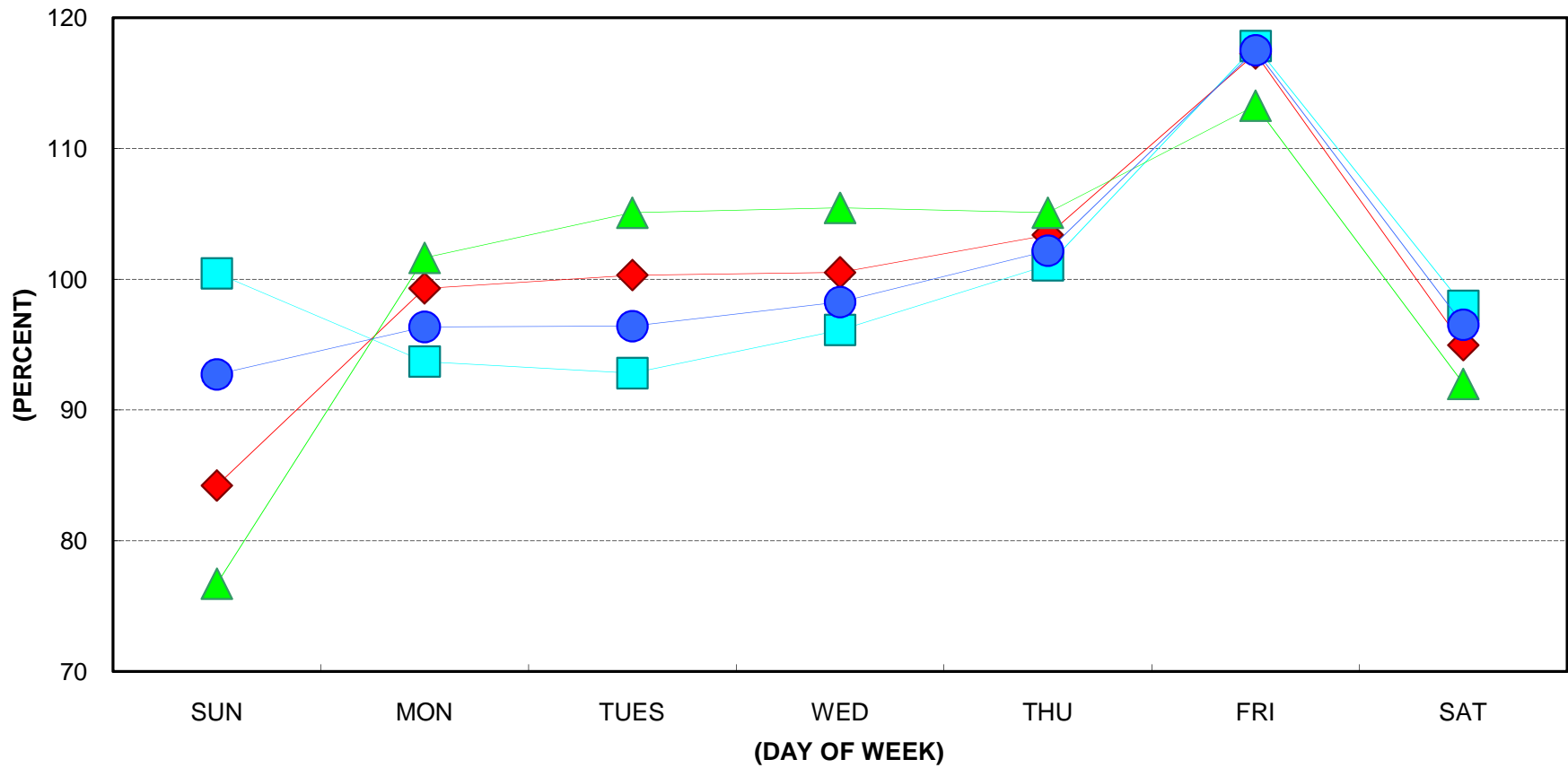
AS A % OF ANNUAL AVERAGE DAILY TRAFFIC



—■— INT —◆— PRIM —▲— SEC —●— RURAL TOTAL

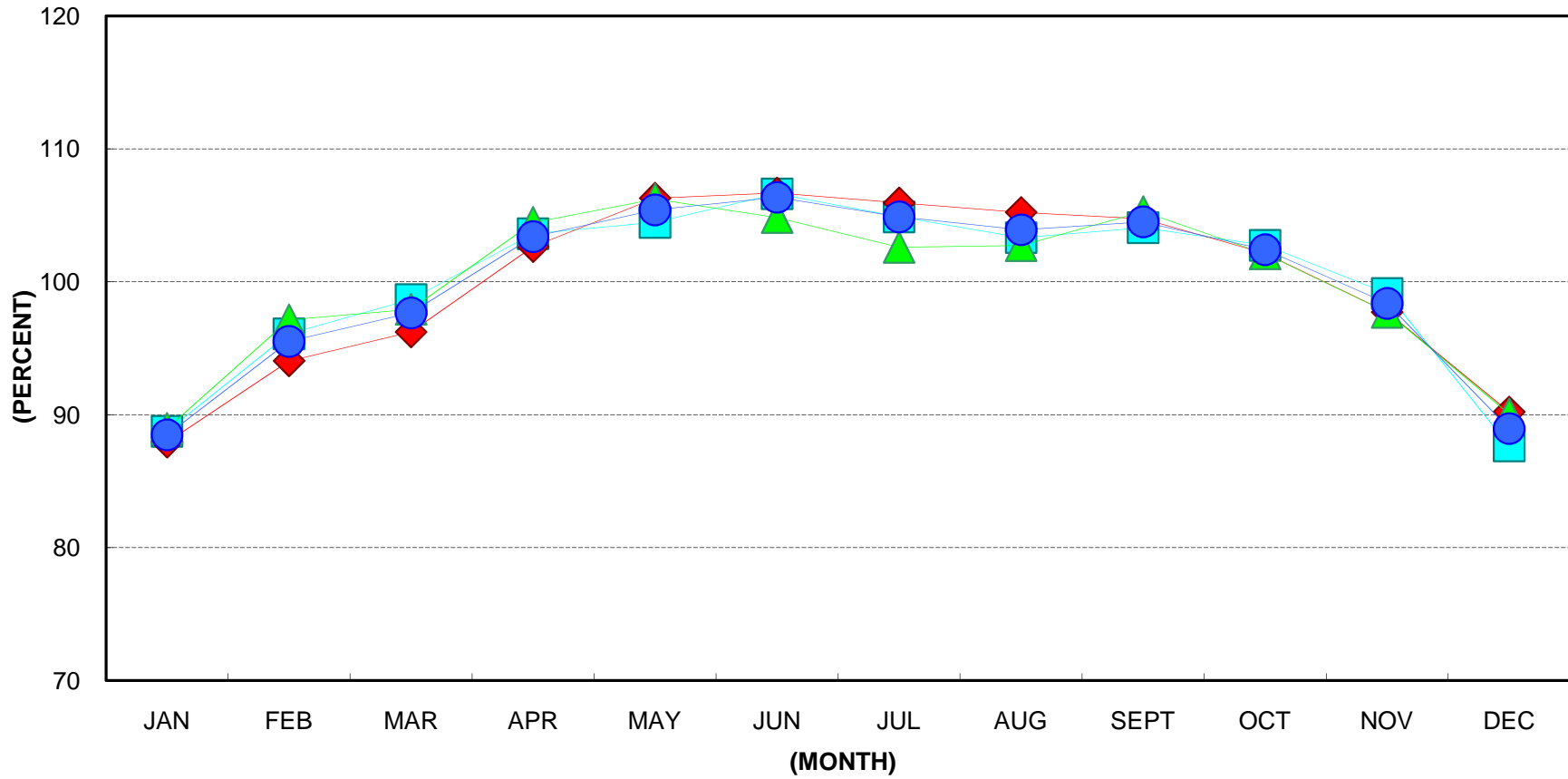
2009 RURAL DAY OF WEEK TRAFFIC

AS A % OF ANNUAL AVERAGE DAILY TRAFFIC



2009 MUNICIPAL MONTHLY TRAFFIC

AS A % OF ANNUAL AVERAGE DAILY TRAFFIC



INT

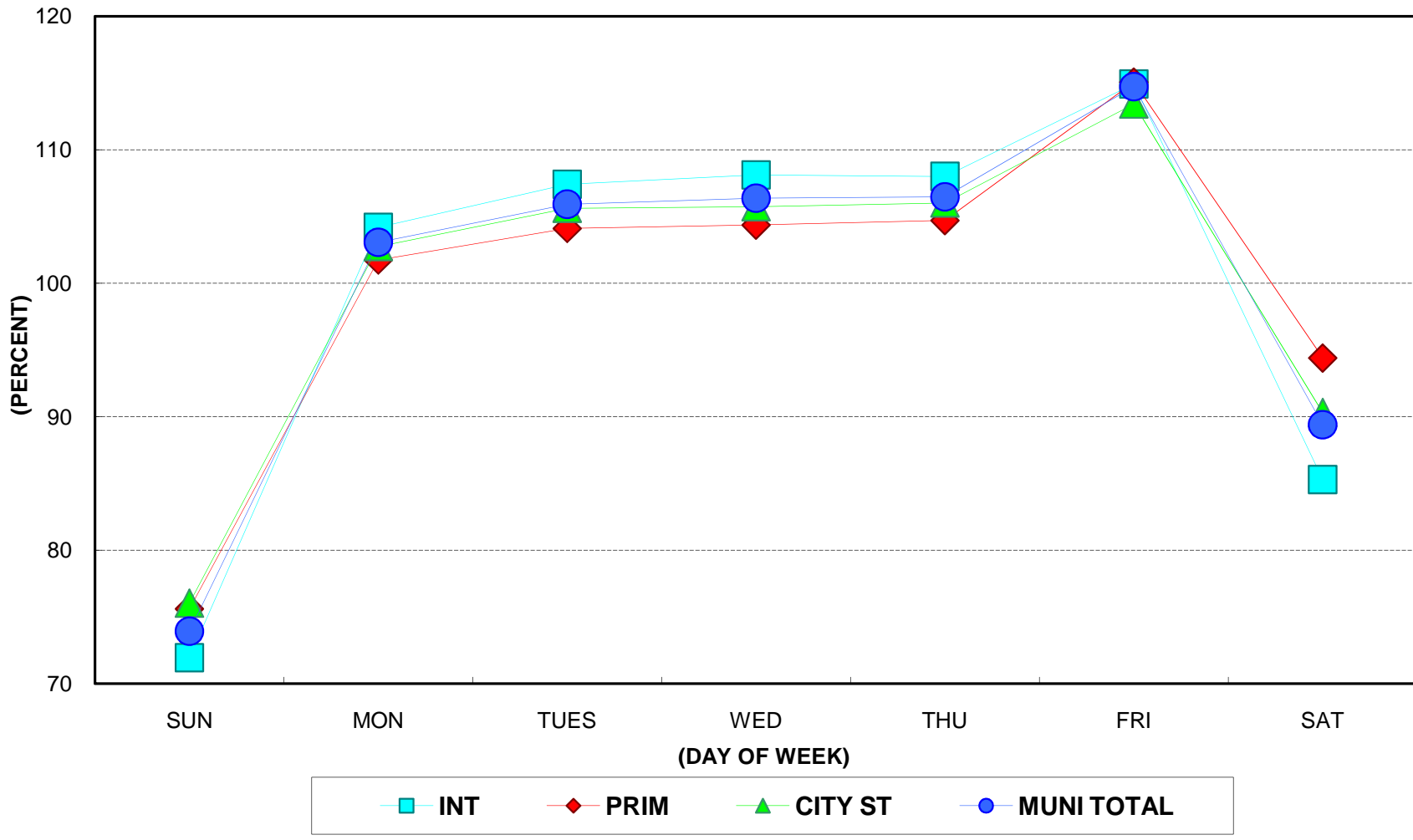
PRIM

CITY ST

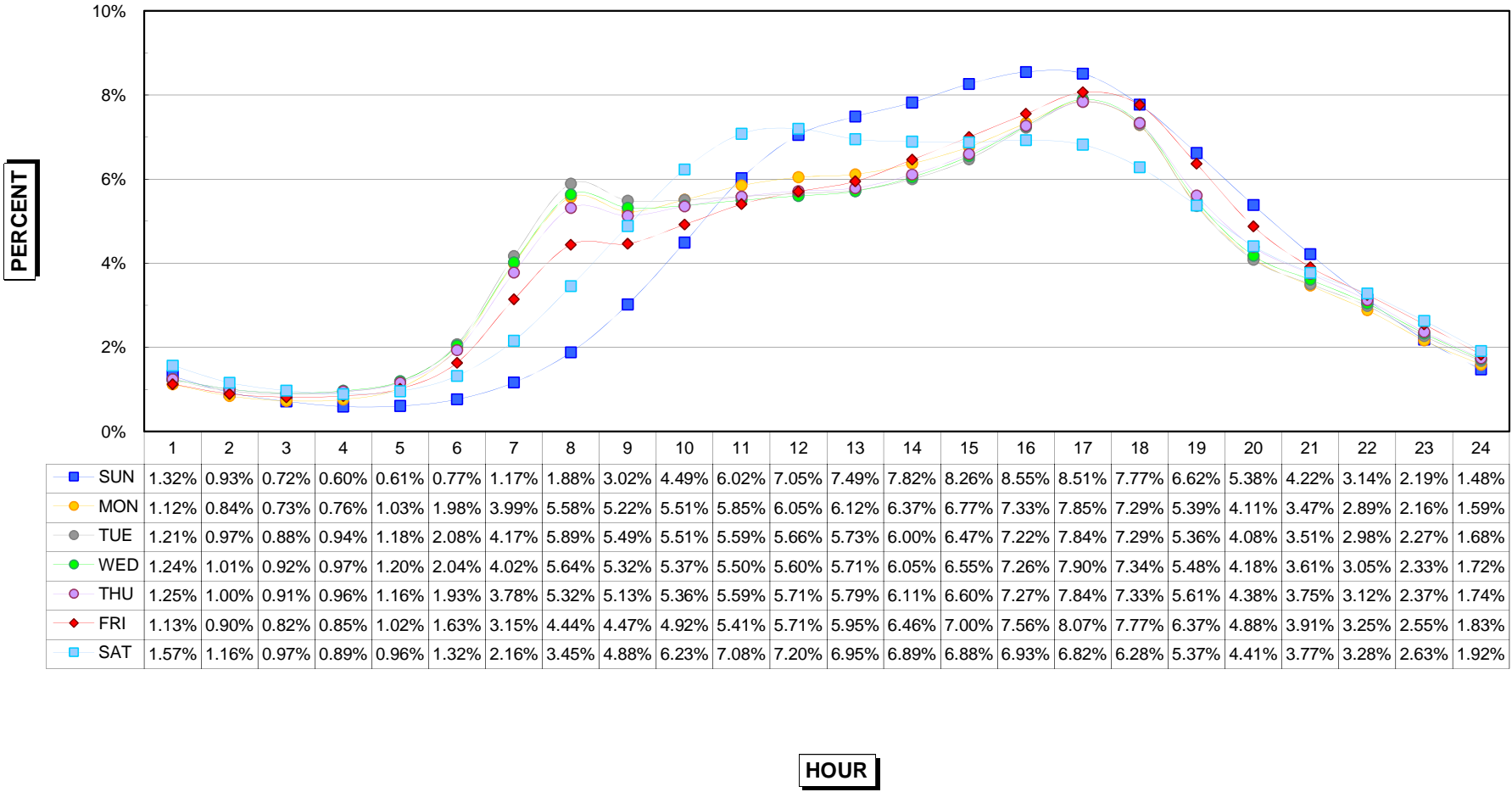
MUNI TOTAL

2009 MUNICIPAL DAY OF WEEK TRAFFIC

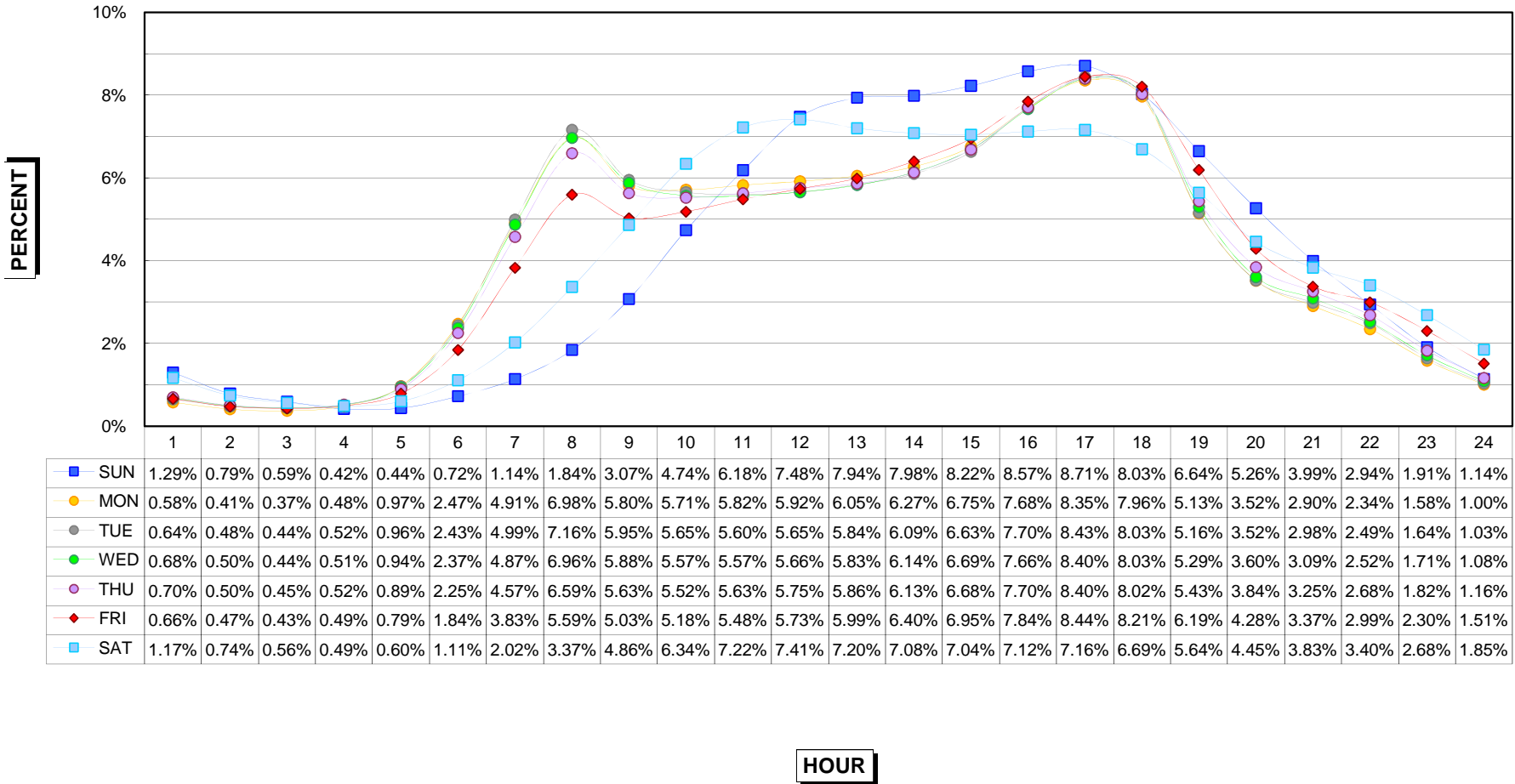
AS A % OF ANNUAL AVERAGE DAILY TRAFFIC



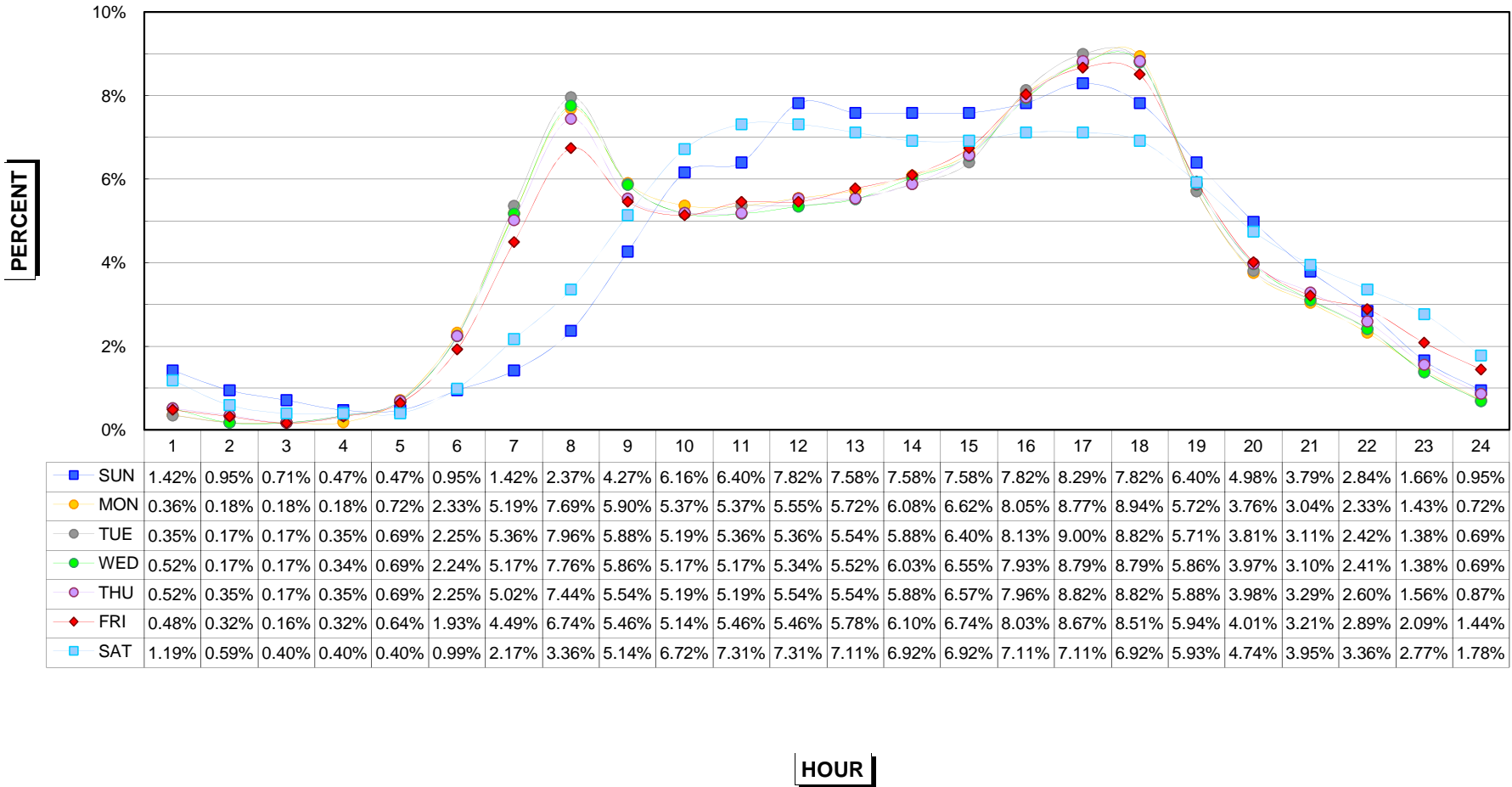
HOURLY DISTRIBUTION OF DAILY TRAFFIC 2009 RURAL INTERSTATE



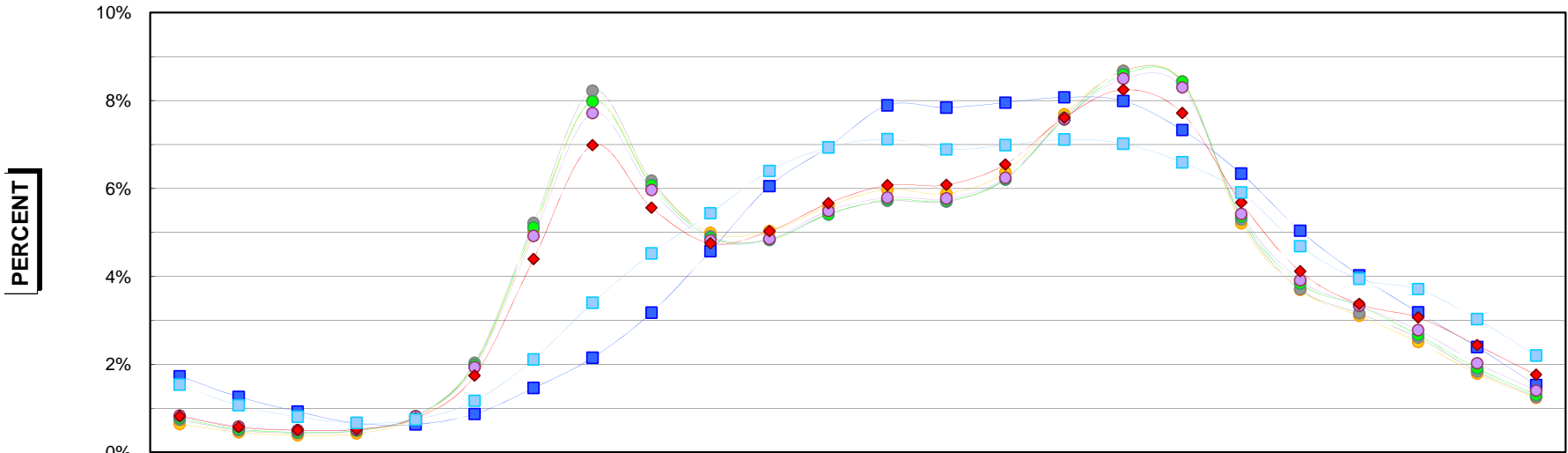
HOURLY DISTRIBUTION OF DAILY TRAFFIC 2009 RURAL PRIMARY



HOURLY DISTRIBUTION OF DAILY TRAFFIC 2009 RURAL SECONDARY



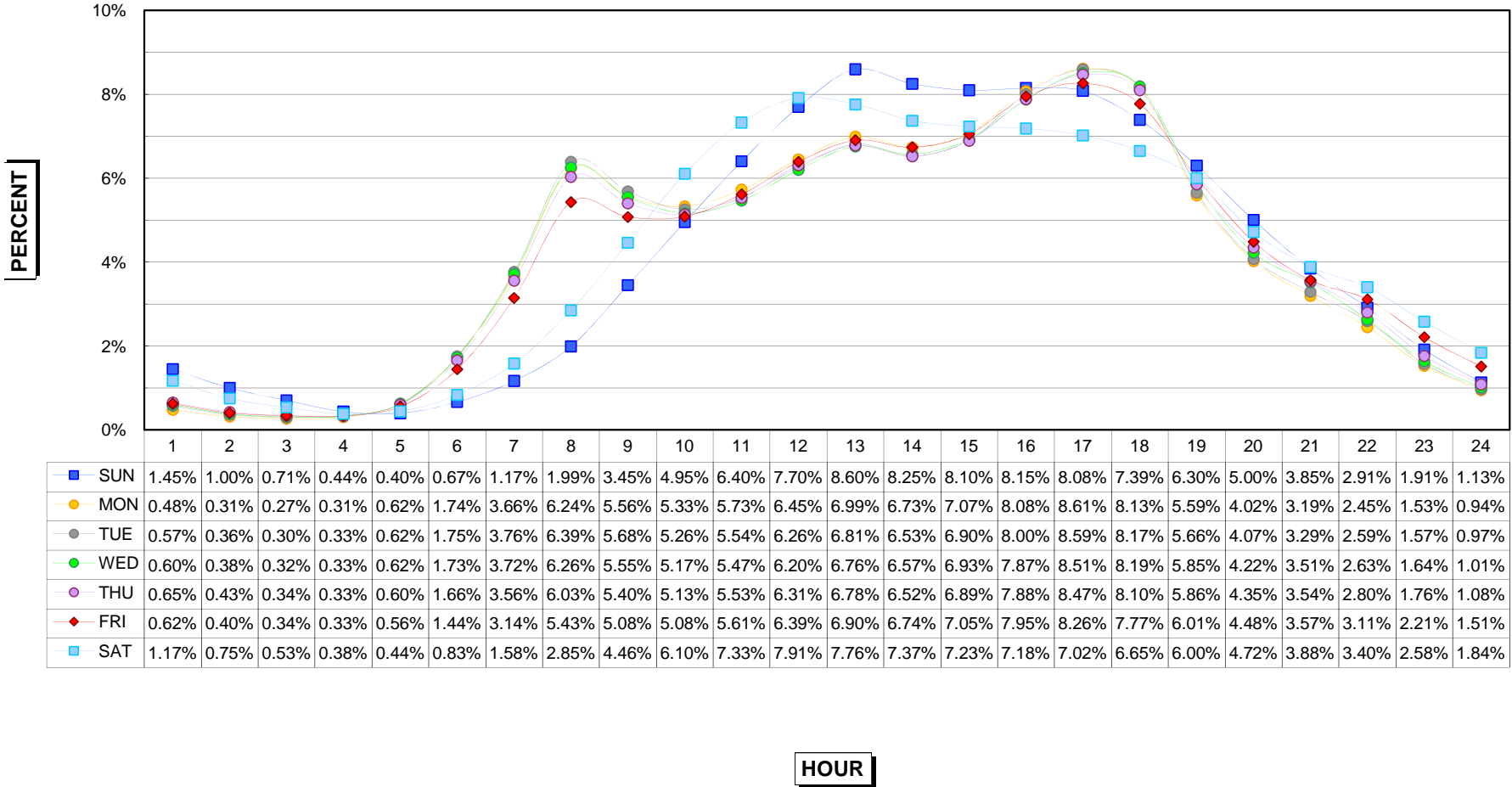
HOURLY DISTRIBUTION OF DAILY TRAFFIC 2009 MUNICIPAL INTERSTATE



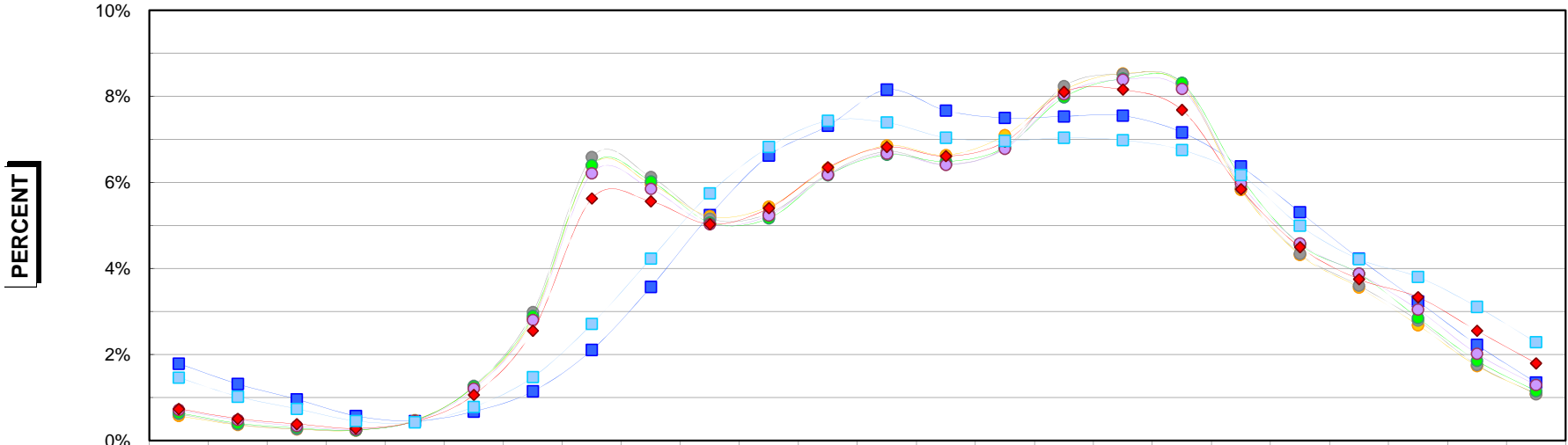
	1	2	3	4	5	6	7	8	9	10	11	12	13	14	15	16	17	18	19	20	21	22	23	24
—■— SUN	1.73%	1.26%	0.92%	0.66%	0.63%	0.87%	1.46%	2.15%	3.18%	4.57%	6.05%	6.94%	7.89%	7.84%	7.95%	8.07%	7.99%	7.33%	6.34%	5.04%	4.02%	3.18%	2.39%	1.53%
—●— MON	0.64%	0.46%	0.39%	0.43%	0.78%	1.99%	5.03%	8.00%	6.12%	4.99%	5.03%	5.60%	5.98%	5.88%	6.36%	7.69%	8.67%	8.44%	5.21%	3.69%	3.10%	2.51%	1.79%	1.24%
—●— TUE	0.74%	0.50%	0.44%	0.49%	0.81%	2.03%	5.22%	8.23%	6.18%	4.92%	4.84%	5.42%	5.72%	5.70%	6.20%	7.61%	8.67%	8.41%	5.29%	3.71%	3.16%	2.61%	1.84%	1.26%
—●— WED	0.77%	0.52%	0.46%	0.49%	0.82%	1.99%	5.11%	7.98%	6.07%	4.88%	4.83%	5.40%	5.74%	5.72%	6.21%	7.57%	8.60%	8.43%	5.35%	3.84%	3.33%	2.67%	1.91%	1.30%
—●— THU	0.83%	0.59%	0.50%	0.52%	0.82%	1.93%	4.92%	7.72%	5.97%	4.82%	4.85%	5.49%	5.79%	5.77%	6.24%	7.57%	8.50%	8.30%	5.42%	3.91%	3.34%	2.78%	2.02%	1.40%
—◆— FRI	0.82%	0.57%	0.50%	0.52%	0.77%	1.74%	4.39%	6.98%	5.56%	4.75%	5.03%	5.66%	6.07%	6.08%	6.55%	7.61%	8.24%	7.71%	5.68%	4.11%	3.37%	3.07%	2.43%	1.76%
—■— SAT	1.54%	1.07%	0.81%	0.67%	0.74%	1.17%	2.11%	3.40%	4.52%	5.44%	6.40%	6.94%	7.12%	6.89%	6.99%	7.11%	7.02%	6.59%	5.91%	4.69%	3.94%	3.71%	3.03%	2.20%

HOUR

HOURLY DISTRIBUTION OF DAILY TRAFFIC 2009 MUNICIPAL PRIMARY



HOURLY DISTRIBUTION OF DAILY TRAFFIC 2009 MUNICIPAL STREETS



	1	2	3	4	5	6	7	8	9	10	11	12	13	14	15	16	17	18	19	20	21	22	23	24
—■— SUN	1.79%	1.31%	0.96%	0.57%	0.45%	0.67%	1.15%	2.11%	3.57%	5.24%	6.62%	7.31%	8.15%	7.67%	7.50%	7.53%	7.55%	7.16%	6.37%	5.31%	4.23%	3.23%	2.22%	1.35%
—●— MON	0.57%	0.36%	0.26%	0.24%	0.47%	1.25%	2.84%	6.38%	5.96%	5.21%	5.44%	6.32%	6.86%	6.63%	7.09%	8.14%	8.53%	8.25%	5.82%	4.31%	3.55%	2.68%	1.73%	1.08%
—●— TUE	0.62%	0.38%	0.27%	0.24%	0.46%	1.27%	2.98%	6.59%	6.12%	5.15%	5.28%	6.20%	6.72%	6.42%	6.80%	8.24%	8.51%	8.31%	5.87%	4.34%	3.60%	2.79%	1.76%	1.08%
—●— WED	0.64%	0.40%	0.29%	0.24%	0.46%	1.26%	2.90%	6.40%	6.02%	5.06%	5.16%	6.17%	6.64%	6.48%	6.81%	7.97%	8.41%	8.31%	6.11%	4.56%	3.88%	2.85%	1.85%	1.15%
—●— THU	0.71%	0.48%	0.34%	0.27%	0.46%	1.21%	2.80%	6.21%	5.85%	5.03%	5.23%	6.17%	6.67%	6.40%	6.78%	8.05%	8.39%	8.17%	5.97%	4.58%	3.88%	3.04%	2.02%	1.29%
—◆— FRI	0.73%	0.51%	0.38%	0.28%	0.44%	1.06%	2.55%	5.62%	5.56%	5.03%	5.40%	6.35%	6.82%	6.61%	6.95%	8.10%	8.15%	7.68%	5.84%	4.50%	3.75%	3.33%	2.55%	1.80%
—■— SAT	1.46%	1.02%	0.74%	0.45%	0.43%	0.78%	1.48%	2.71%	4.23%	5.74%	6.82%	7.43%	7.39%	7.04%	6.96%	7.04%	6.98%	6.75%	6.17%	4.99%	4.21%	3.80%	3.11%	2.28%

HOUR

SUMMARY OF ANALYSIS

Analysis of the Thirtieth Highest Hour at the Permanent Continuous Automatic Traffic Recorder Stations 2000 - 2009

Permanent automatic traffic recorder data is collected on a continuing basis in Iowa to facilitate the expansion of the short-time manual and portable recorder traffic counts to Annual Average Daily Traffic and to make possible a means of estimating design hour volumes from the Annual Average Daily Traffic. A record of the 50 highest hourly volumes at each rural automatic recorder station has been kept since 1949, and at each urban station since 1959, making possible the fitting of first degree curves to desired design hours periodically as the data has been accumulated.

From permanent automatic traffic recorder data a straight-line relationship between the design hour volume and the Annual Average Daily Traffic can be expressed mathematically as:

$$Y = a + bx$$

Where Y = nth high hour volume (design hour)

x = Annual Average Daily Traffic

a = A constant of minimum relationship

b = The slope relationship which can be expressed as a percentage of the Annual Average Daily Traffic

The constant "a" and the relationship "b" have been recomputed for the 30th highest hour as the data for each succeeding year has become available. Table 1 shows the 30th high hour results computed from data collected over a ten-year period, 2000 through 2009.

Table 1

Calculations of Design Hour Volumes (30th high hour) From Annual Average Daily Traffic

	PRIMARY		INTERSTATE		SECONDARY		CITY STREET	
	"a" Constant	"b" %AADT	"a" Constant	"b" %AADT	"a" Constant	"b" %AADT	"a" Constant	"b" %AADT
Rural	9.79	10.70	361.32	9.73	5.21	12.09	-	-
Municipal	67.83	9.75	258.80	9.73	-	-	63.25	9.79

**ANNUAL AVERAGE DAILY TRAFFIC BY STATIONS FOR THE YEARS 1999 TO 2009
RURAL INTERSTATE**

STATION	ROUTE	LOCATION	1999	2000	2001	2002	2003	2004	2005	2006	2007	2008	2009
100	I 29	3.0 MI N OF S JCT I 680 HONEY CREEK	20419	20202	20192	21070	20906	21319	20959	21484	21033	20246	20170
102	I 29	4.0 MI S OF US 34 PACIFIC JCT	11247	11221	11402	11917	12010	12101	12151	12495	12300	11793	11761
103	I 80	5.0 MI E OF IA 146 GRINNELL	26366	26178	26249	27346	26917	26726	26325	26940	26853	26118	26234
104	I 35	3.0 MI N OF IA 175 JEWELL	17411	17547	17848	18596	18996	20269	20200	20629	20598	20147	20509
105	I 29	3.8 MI S OF IA 175 ONAWA	11200	11016	11092	11346	12031	12171	12015	12283	12418	12096	12512
106	I 35	1.5 MI N OF IA 2 LEON	12271	12486	12659	13234	13265	13233	12982	13290	13227	12705	12715
109	I 35	3.0 MI N OF CO B20 HANLONTOWN	14965	15221	15880	16575	17046	17556	17373	18466	18611	17794	18757
110	I 80	1.5 MI W OF CO M16 SHELBY	21572	21441	21468	22379	22254	22496	22208	22670	22752	21727	22189
111	I 80	2.0 MI E OF IA 149 WILLIAMSBERG	29838	29808	29952	31092	31021	31258	30939	31347	31325	29718	29950
113	I 380	3.75 MI NW OF IA 150 BRANDON	11854	12029	12224	12934	13422	14156	14308	14695	14976	14648	15084
115	I 80	2.0 MI E OF US 71 ATLANTIC	18365	18339	18377	19018	19013	19324	19282	19480	19697	19267	19067
116	I 80	0.8 MI W OF 74TH ST WAUKEE	31937	34507	32492	34059	33413	33870	33880	35190	34897	33977	34437
117	I 80	1.75 MI E OF E JCT I 35/80/235 ALTOONA	60719	60851	62242	65755	66846	69050	70547	70362	68589	67650	69757
119	I 80	1.5 MI E OF MIDDLE RD LECLAIRE			25685	28206	29720	29201	28264	28926	28639	27436	27398
120	I 80	2.5 MI E OF CO RD X40 TIPTON	29391	29329	30323	31234	31513	32318	32239	32583	32755	31284	31386
121	I 35	2.0 MI N OF CO RD R75 DOWS							13800	14112	13858	13376	13822
122	I 35	1.0 MI N OF IA 92 CUMMING										21255	21339

**2009 EXPANSION FACTORS
RURAL INTERSTATE**

MON - THU		MON	TUE	WED	THU	FRI	SAT	SUN
1.299	JAN	1.397	1.299	1.297	1.219	1.090	1.361	1.405
1.215	FEB	1.261	1.237	1.218	1.154	1.041	1.281	1.293
1.131	MAR	1.183	1.191	1.101	1.042	0.880	1.100	1.107
1.059	APR	1.087	1.107	1.074	0.993	0.843	1.097	1.090
1.008	MAY	1.058	1.071	1.013	0.910	0.808	0.960	0.950
0.939	JUN	0.962	0.983	0.940	0.868	0.751	0.893	0.842
0.895	JUL	0.922	0.953	0.893	0.841	0.717	0.867	0.828
0.899	AUG	0.904	0.935	0.907	0.855	0.742	0.817	0.800
1.015	SEP	1.056	1.043	1.012	0.948	0.789	0.955	0.918
1.041	OCT	1.075	1.084	1.037	0.991	0.822	1.037	0.931
1.108	NOV	1.162	1.152	1.096	1.034	0.849	1.018	1.078
1.301	DEC	1.211	1.382	1.501	1.167	0.954	1.120	1.301

**ANNUAL AVERAGE DAILY TRAFFIC BY STATIONS FOR THE YEARS 1999 TO 2009
MUNICIPAL INTERSTATE**

STATION	ROUTE	LOCATION	1999	2000	2001	2002	2003	2004	2005	2006	2007	2008	2009
701	I 380	BTWN WILSON AND 33RD CEDAR RAPIDS	60722	60803	61973	63391	63338	64289	64150	64968	64650	63791	65296
703	I 380	AT J AVE S OF COLDSTREAM CEDAR RAPIDS	78696	78969	79802	81023	81222	82356	81384	82503	82450	80922	80465
704	I 29/80	0.6 MI W OF IA 192 COUNCIL BLUFFS	68638	69496	70860	76024	74081	75623	77569	79350	79516	76838	75586
705	I 74	0.6 MI S OF US 6 BETTENDORF	41466	43683	47438	48380	48022	47671	48031	49099	48849	48427	47738
707	I 29	AT SOUTH DAKOTA BORDER SIOUX CITY									28070	27931	28175

**2009 EXPANSION FACTORS
MUNICIPAL INTERSTATE**

MON - THU		MON	TUE	WED	THU	FRI	SAT	SUN
1.027	JAN	1.083	1.011	1.022	0.999	0.974	1.329	1.667
0.974	FEB	1.007	0.963	0.976	0.953	0.918	1.240	1.546
0.953	MAR	0.987	0.965	0.937	0.917	0.866	1.205	1.455
0.912	APR	0.956	0.916	0.901	0.887	0.847	1.149	1.480
0.894	MAY	0.925	0.907	0.894	0.856	0.831	1.090	1.299
0.898	JUN	0.915	0.918	0.885	0.868	0.844	1.127	1.291
0.903	JUL	0.930	0.928	0.890	0.877	0.848	1.154	1.314
0.914	AUG	0.927	0.915	0.914	0.901	0.849	1.128	1.323
0.909	SEP	0.937	0.917	0.902	0.885	0.839	1.140	1.317
0.932	OCT	0.953	0.936	0.919	0.925	0.848	1.180	1.349
0.933	NOV	0.967	0.943	0.925	0.904	0.831	1.146	1.431
1.060	DEC	0.993	1.101	1.182	0.991	0.880	1.164	1.558

**ANNUAL AVERAGE DAILY TRAFFIC BY STATIONS FOR THE YEARS 1999 TO 2009
MUNICIPAL PRIMARY**

STATION	ROUTE	LOCATION	1999	2000	2001	2002	2003	2004	2005	2006	2007	2008	2009
** 802	US 71	W OF MEMPHIS AVE SPIRIT LAKE	13207	12667	12948	12038	11884	12408	12408	12102	11721	11530	11961
803	IA 12	ON VIADUCT E OF COURT ST SIOUX CITY	27834	26772	27293	26866	26579	25631	25518	23924	23112	22228	NODATA
804	IA 4	N OF 4TH AVE NW POCAHONTAS	3213	3059	3049	3019	2962	3012	3052	3082	3012	2950	2868
805	IA 148	S OF 11TH ST CORNING	3351	3256	3208	3325	3230	3223	3098	3202	3046	2852	2867
806	US 6	E OF SHASTA WINDSOR HEIGHTS	22551	22199	21766	21952	21382	22129	22989	21425	19954	19072	19481
808	US 71	S OF BIRCH ST AUDUBON	6862	5177	4592	4811	4757	4992	4858	4750	4701	4655	4769
809	IA 14	N OF WOODLAND ST MARSHALLTOWN	6736	6729	6401	6636	6604	6540	6484	6268	6304	6164	6119
810	IA 92	W OF N ST INDIANOLA	11109	10513	11077	11793	11634	11725	11582	11203	10858	10837	11024
811	IA 192	S OF AVE N COUNCIL BLUFFS	10419	10474	10792	10061	9665	9442	9474	9047	8858	9139	9057
812	IA 122	W OF VIRGINIA AVE MASON CITY	15650	12925	13941	13489	13326	13052	12706	12014	12035	11825	12186
813	US 6	E OF PINE ST DAVENPORT	21129	20440	20584	19789	19891	21888	22078	21648	22022	21686	21312
815	IA 922	BTWN WILEY BLVD & WESTDALE CDR RPDS	8107	8044	8249	8560	8783	9027	9006	9474	9565	9551	10812
816	US 34	W OF US 61 WEST BURLINGTON	13716	13015	13036	13162	13096	13085	12814	13878	13666	13097	13168
819	IA 9	EAST OF 14TH ST OSAGE	7047	6750	6024	5857	5627	5546	5536	5391	5374	5264	5237
820	IA 17	N OF NW 11TH ST EAGLE GROVE	3609	3443	3151	2970	2934	2902	2997	2867	2818	2739	2722
821	IA 4	S OF EDGEWOOD AVE E JEFFERSON	4790	4548	4405	4285	4206	4343	4211	4166	4102	4074	4154
823	US 6	BETWEEN SYCAMORE & 1ST AVE IOWA CITY	21880	20968	21027	21564	21677	21858	21726	21526	21187	20946	20652
824	US 69	BETWEEN 15TH AND 16TH ST AMES	19468	19214	19331	19624	19394	19737	20080	19804	19440	17551	17318
826	US 65	1.5 MI NE OF I-80 BONDURANT	10708	10710	10863	11068	11293	11824	12737	12397	12052	11761	12272
827	US 61/151	W OF MISSISSIPPI R DUBUQUE	18001	18133	18270	18716	19036	19188	19238	19396	20588	20031	20744
828	IA 150	S OF 12TH ST OELWEIN	6928	6840	6652	6600	6470	6555	6505	6654	6298	6295	6461
829	US 59	S OF 5TH AVE SHENANDOAH		10383	9688	9842	9697	9964	10054	10053	9698	9121	8694
830	IA 23	S OF IA 92 OSKALOOSA				3622	3506	3279	3204	3159	3073	2951	2871

Note: Station 802 is not used in the calculation of the Municipal Primary Factors.
It is used in the calculation of the Recreational Factors.

**2009 EXPANSION FACTORS
MUNICIPAL PRIMARY**

MON - THU		MON	TUE	WED	THU	ERI	SAT	SUN
1.081	JAN	1.110	1.070	1.085	1.063	0.971	1.198	1.573
1.023	FEB	1.052	1.016	1.022	1.007	0.924	1.145	1.455
0.995	MAR	1.009	1.009	0.991	0.970	0.886	1.112	1.423
0.941	APR	0.988	0.945	0.930	0.916	0.830	1.026	1.431
0.918	MAY	0.937	0.930	0.918	0.888	0.830	0.949	1.199
0.919	JUN	0.936	0.935	0.908	0.894	0.839	1.018	1.229
0.927	JUL	0.950	0.944	0.916	0.907	0.846	1.033	1.232
0.917	AUG	0.928	0.917	0.919	0.905	0.841	1.022	1.234
0.925	SEP	0.955	0.928	0.920	0.901	0.823	1.017	1.237
0.950	OCT	0.970	0.955	0.940	0.941	0.843	1.061	1.298
0.962	NOV	0.979	0.968	0.962	0.942	0.849	1.062	1.326
1.052	DEC	0.980	1.064	1.192	0.998	0.887	1.053	1.424

ANNUAL AVERAGE DAILY TRAFFIC BY STATIONS FOR THE YEARS 1999 TO 2009

SECONDARY

PAVED

STATION	ROUTE	LOCATION	1999	2000	2001	2002	2003	2004	2005	2006	2007	2008	2009
300	CO P14	2.7 MI N OF CO E33 CHURDAN	302	294	288	292	286	303	296	303	250	237	247
301	CO S14	0.8 MI S OF CO E29 NEVADA	1043	964	931	1005	985	1001	979	1008	989	975	973
302	CO M55	0.2 MI N OF IA 141 MANILLA	923	943	975	936	875	845	824	830	783	739	736
303	CO K45	2.25 MI S OF IA 175 ONAWA	1177	1138	1107	1115	1075	1005	1025	1029	1059	1106	1152
304	CO V45	3.5 MI N OF IA 92 SIGOURNEY	646	623	572	599	614	643	640	645	634	617	636
306	CO E53	1.75 MI E OF IA 25 SCRANTON	572	558	568	625	595	575	579	570	515	520	544
307	CO R38	2.2 MI N OF CO C54 CLARION	1316	1230	1257	1308	1309	1341	1292	1361	1293	1255	1240
308	CO N32	1.6 MI N OF IA 9 ESTHERVILLE	364	369	353	360	360	361	361	370	341	330	357
309	CO K52	1.5 MI S OF US 18 HULL	803	959	972	998	992	999	974	1017	987	1001	1063
310	CO Y52	1.5 MI S OF US 30 GRAND MOUND	559	526	518	533	531	529	529	534	504	479	501
311	CO W12	3.5 MI S OF US 30 WATKINS	795	758	800	861	847	864	835	852	853	804	825
312	CO E26	2.7 MI W OF CO RD R38 BOONE	1438	1386	1364	1405	1383	1406	1336	1370	1327	1213	1269
313	CO D42	0.2 MI E OF IA 13 MANCHESTER	659	675	682	734	746	707	715	719	688	679	691
314	CO 105	1.3 MI E OF CO S56 NORTHWOOD	740	697	675	647	638	667	675	766	771	775	778
315	CO RD	5.5 MI E OF US 63 DRAKESVILLE	743	706	706	721	734	712	722	733	720	656	676

GRAVEL

STATION	ROUTE	LOCATION	1999	2000	2001	2002	2003	2004	2005	2006	2007	2008	2009
400	CO B30	0.5 MI E OF CO L48 PRIMGHAR	25	22	24	26	27	28	26	29	27	21	23
401	LOC RD	1.75 MI N OF CO E36 CLUTIER	30	29	36	33	36	52	32	33	35	31	30
402	LOC RD	0.75 MI E OF CO V18 CLUTIER	42	39	38	38	40	51	42	50	50	41	47
403	CO H47	5.0 MI SE OF US 34 ALBIA	87	75	77	91	103	115	109	111	102	88	98
405	LOC RD	2.5 MI N OF US 18 NEW HAMPTON	57	54	43	60	57	56	47	55	55	46	48
406	LOC RD	2.0 MI E OF US 169 LORIMOR	86	80	73	68	67	76	71	67	70	57	63
407	CO H23	2.0 MI E OF US 169 LORIMOR	66	69	62	62	73	75	81	77	76	68	70

Note: Stations 600 & 603 are used in the calculation of the Secondary Factors and the Recreational Factors.

**2009 EXPANSION FACTORS
SECONDARY**

MON - THU		MON	TUE	WED	THU	FRI	SAT	SUN
1.246	JAN	1.354	1.210	1.235	1.195	1.139	1.476	1.892
1.087	FEB	1.116	1.060	1.065	1.105	1.042	1.319	1.575
1.037	MAR	1.069	1.063	1.014	0.988	0.919	1.182	1.486
0.916	APR	0.979	0.916	0.902	0.884	0.810	1.022	1.414
0.865	MAY	0.878	0.870	0.865	0.849	0.806	0.914	1.070
0.863	JUN	0.885	0.881	0.844	0.831	0.802	1.012	1.138
0.879	JUL	0.898	0.893	0.857	0.871	0.824	0.958	1.121
0.924	AUG	0.936	0.919	0.921	0.915	0.858	1.049	1.193
0.878	SEP	0.912	0.875	0.864	0.863	0.808	0.975	1.147
0.932	OCT	0.944	0.916	0.914	0.946	0.860	1.020	1.205
0.880	NOV	0.892	0.890	0.872	0.867	0.814	0.998	1.189
1.177	DEC	1.141	1.175	1.327	1.089	0.955	1.150	1.527

**ANNUAL AVERAGE DAILY TRAFFIC BY STATIONS FOR THE YEARS 1999 TO 2009
MUNICIPAL STREETS**

STATION	ROUTE	LOCATION	1999	2000	2001	2002	2003	2004	2005	2006	2007	2008	2009
900	LAKE ST	N OF 3RD ST in STORM LAKE	3662	3508	3502	3266	3128	3046	2911	2818	2872	2756	2848
901	2ND AVE N	E OF 15TH ST in FORT DODGE	7264	7211	7368	6681	6471	6795	6780	6695	6760	6775	6665
902	LOCUST ST	E OF SPRING ST in DAVENPORT	23322	22415	22498	23162	22986	22382	22369	21934	21750	21300	20726
903	JEFFERSON	NE OF E 5TH ST in OTTUMWA	6905	6678	6768	6935	6862	6901	6549	6627	6456	6272	6006
904	JOHNSON	W OF JANICE DR in CEDAR RAPIDS	9527	9821	10174	9499	10202	10381	10360	10086	9947	10000	9818
905	N'WESTERN	N OF 20TH ST in AMES	2842	2727	2741	2791	2797	2652	2460	2348	2304	2202	2264
906	DUBUQUE	S OF DAVENPORT ST in IOWA CITY	15358	15324	15899	16201	15593	15615	15177	15448	15230	14688	14411
907	COLLEGE	S OF 23RD ST in CEDAR FALLS	9469	9564	9973	9272	9036	8440	7947	7862	7444	NO DATA	NO DATA
908	LINDWOOD	S OF 35TH ST in SIOUX CITY	1171	1193	1139	1171	1134	1129	1056	1026	1008	969	977
909	HAMILTON	N OF CLIFTON AVE in SIOUX CITY	15700	15280	15448	15596	15335	14789	14529	14547	14314	13854	14159
910	GRANDVIEW	SE OF PLYMOUTH CT in DUBUQUE	9020	8973	9090	9218	9272	9402	9094	8836	8779	8596	8871
911	HUMBOLDT	S OF 4TH ST in BODE	942	886	898	869	794	773	796	796	786	776	770
912	ELM ST	N OF LUCAS ST in CRESTON	4207	4066	4024	4054	4081	4422	4126	3938	3710	3798	3807
** 913	WASHINGTON	E OF HARRISON ST in MOUNT PLEASANT	16087	14866	14032	13998	13942	13728	12834	11283	10632	10540	10161

Note: Station 913 was previously site 801.
Washington Street was US 34 until Nov. 2005 when the US 34 bypass opened.

**2009 EXPANSION FACTORS
MUNICIPAL STREETS**

<u>MON - THU</u>		<u>MON</u>	<u>TUE</u>	<u>WED</u>	<u>THU</u>	<u>FRI</u>	<u>SAT</u>	<u>SUN</u>
1.070	JAN	1.102	1.055	1.078	1.050	0.981	1.255	1.542
1.002	FEB	1.033	0.987	0.996	0.994	0.922	1.185	1.421
0.985	MAR	0.997	1.001	0.981	0.957	0.905	1.180	1.413
0.931	APR	0.984	0.937	0.915	0.905	0.845	1.091	1.389
0.904	MAY	0.915	0.913	0.909	0.883	0.830	0.980	1.212
0.924	JUN	0.942	0.940	0.911	0.900	0.873	1.095	1.295
0.949	JUL	0.967	0.971	0.942	0.928	0.887	1.096	1.273
0.934	AUG	0.953	0.933	0.936	0.916	0.875	1.101	1.302
0.925	SEP	0.957	0.926	0.917	0.907	0.850	1.079	1.258
0.958	OCT	0.976	0.956	0.946	0.955	0.871	1.103	1.299
0.955	NOV	0.975	0.957	0.958	0.932	0.864	1.110	1.300
1.036	DEC	0.985	1.044	1.144	0.989	0.889	1.135	1.416

ANNUAL AVERAGE DAILY TRAFFIC BY STATIONS FOR THE YEARS 1999 TO 2009

RECREATIONAL

PRIMARY

STATION	ROUTE	LOCATION
** 500	US 71	0.1 MI S OF CO RD B14 FOSTORIA
** 501	IA 5	3.8 MI S OF US 34 MORAVIA
503	IA 415	0.5 MI W OF NW POLK CITY RD POLK CITY

1999	2000	2001	2002	2003	2004	2005	2006	2007	2008	2009
7985	8197	8178	8174	8358	8497	8263	8343	8346	7877	8067
3557	3292	3328	3437	3492	3650	3644	3765	3745	3692	3922
4540	4531	4344	4544	4926	5541	5789	5870	5162	5293	6076

SECONDARY

STATION	ROUTE	LOCATION
** 600	CO F25	0.1 MI W OF CO P18 SPRINGBROOK
602	ENTRANCE	GEORGE WYTH S. P. WATERLOO
** 603	ENTRANCE	3.3 MI N OF IA 25 GREEN VALLEY S. P.

1999	2000	2001	2002	2003	2004	2005	2006	2007	2008	2009
250	250	260	223	203	210	204	209	226	205	216
1170	1200	1032	994	937	826	822	777	799	643	731
324	257	256	301	346	348	339	352	339	273	175

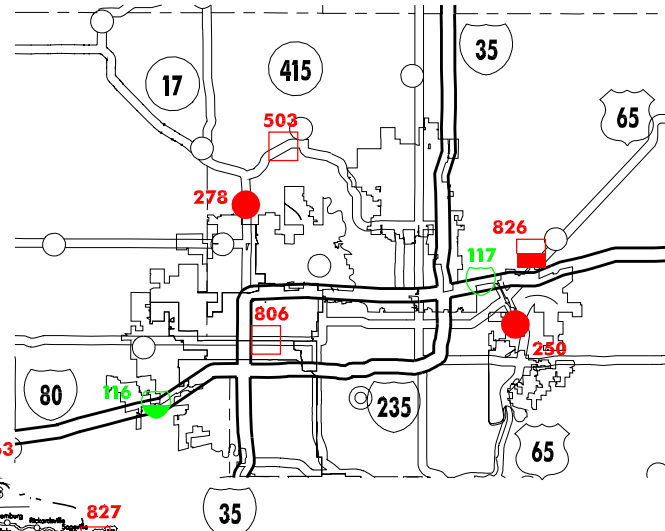
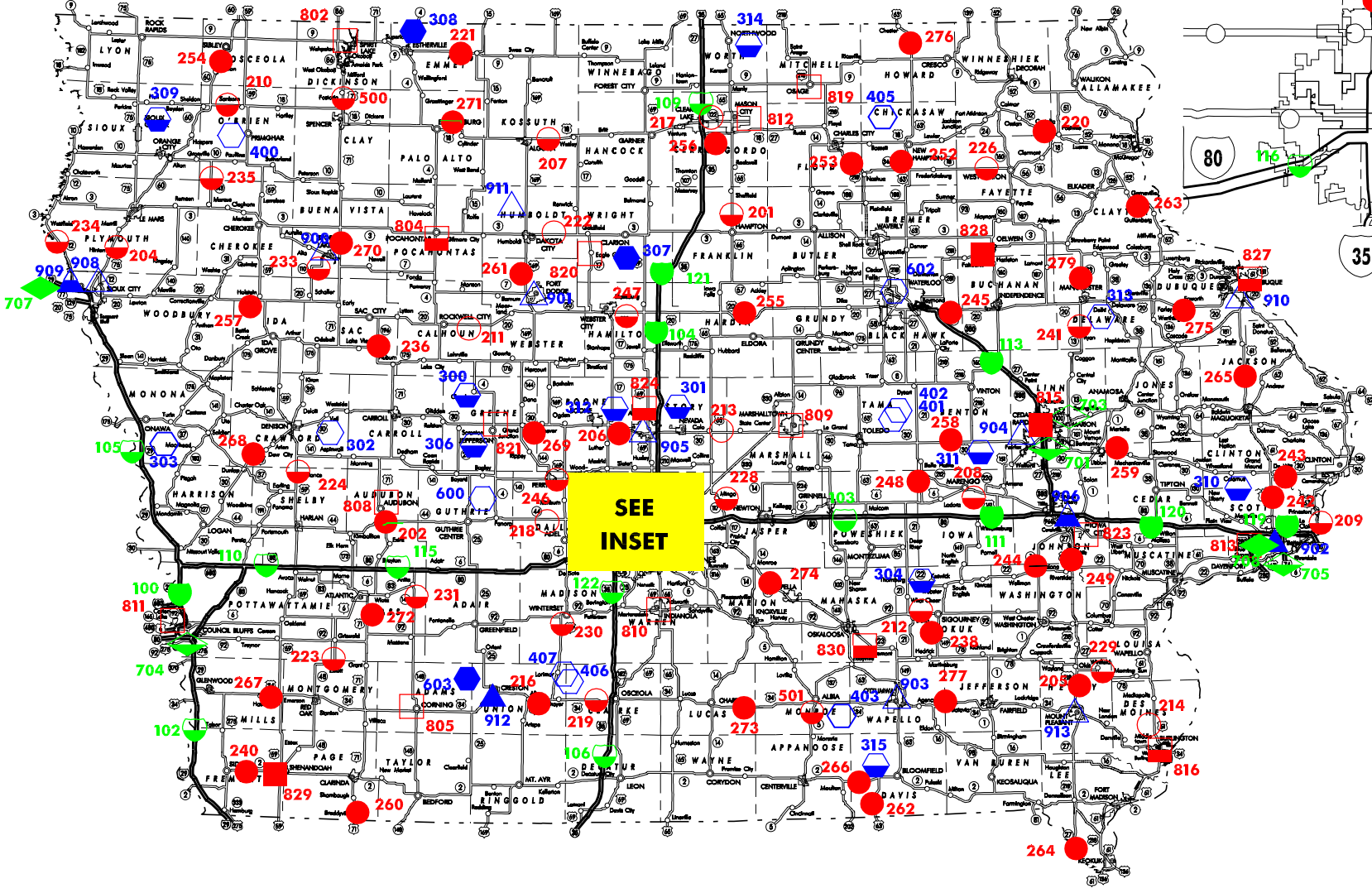
Notes: Stations 500 & 501 are used in the calculation of the Rural Primary Factors and the Recreational Factors.
 Stations 600 & 603 are used in the calculation of the Secondary Factors and the Recreational Factors.
 Station 802 is used in the calculation of the Recreational Factors.

**2009 EXPANSION FACTORS
RECREATIONAL**

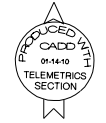
MON - THU		MON	TUE	WED	THU	FRI	SAT	SUN
1.199	JAN	1.281	1.177	1.194	1.157	1.063	1.271	1.619
1.158	FEB	1.191	1.127	1.140	1.177	1.049	1.231	1.603
1.104	MAR	1.118	1.145	1.101	1.049	0.968	1.149	1.529
0.995	APR	1.057	0.991	0.990	0.959	0.861	1.082	1.511
0.902	MAY	0.923	0.910	0.916	0.861	0.815	0.854	0.994
0.834	JUN	0.854	0.856	0.825	0.794	0.716	0.760	0.879
0.792	JUL	0.814	0.822	0.776	0.767	0.679	0.721	0.827
0.823	AUG	0.829	0.829	0.831	0.804	0.719	0.750	0.873
0.870	SEP	0.897	0.874	0.873	0.838	0.750	0.794	0.952
0.979	OCT	0.990	0.975	0.972	0.979	0.884	1.085	1.309
1.038	NOV	1.058	1.038	1.041	1.016	0.926	1.137	1.411
1.172	DEC	1.079	1.193	1.376	1.089	0.976	1.175	1.618

AUTOMATIC TRAFFIC RECORDER LOCATIONS

JANUARY 1, 2010



 Iowa Department of Transportation
Office of Transportation Data
Phone 515-239-1526



	13 CLASSES AND SPEED BY AXLE	3 CLASSES AND SPEED BY LENGTH	VOLUME ONLY
RURAL INTERSTATE			
MUNICIPAL INTERSTATE			
RURAL PRIMARY			
MUNICIPAL PRIMARY			
RURAL SECONDARY			
MUNICIPAL STREETS			
TOTAL	155	59	54